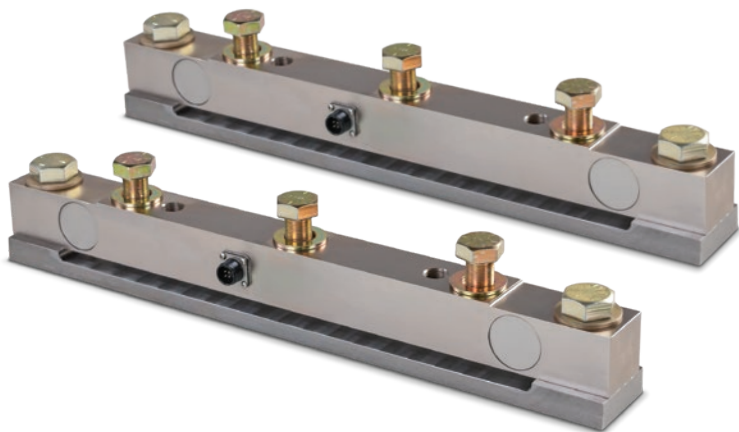


King Pin Load Cell Kit



Part Number/Price

Part #	Description	Price
171325	Onboard kit, king pin plate load cell system	Consult

**King pin plate not included with kit*

The PL9000-26 is a double-ended shear beam load cell that is ideal for distributing weight of the king pin plate to the trailer frame. With a capacity of 20,000 lb per module, these load cells can withstand rough roads.

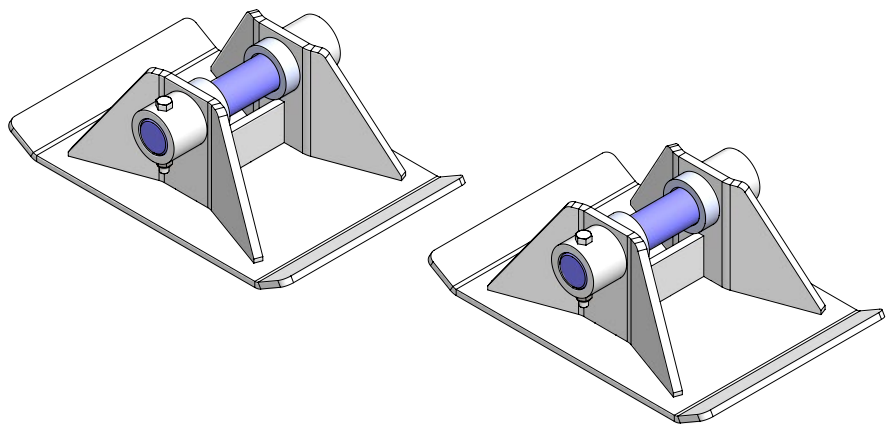
Complete Kit Includes

- Two PL9000-26 load cells
- Two bearing plates (mild steel)
- Two 30 ft cables with connectors
- Load cell bolts and flat washers
- Upper mount bolts and flat washers

Standard Features

- System capacity:
 - Dynamic: 40,000 lb
 - Static: 80,000 lb
- Four-pin load cell connectors
- Connector cable assembly with potted connectors
- Single-piece bearing plate, welded securement
- Rigid mounting of load cell to frame (king pin plate not included)

Sand Shoe Load Cell Kit



Part Number/Price

Part #	Description	Price
215049	Onboard Kit, sand shoe load cell system	Consult

The sand shoe load cell kit is a conversion for common semi-trailer landing gear. A pair of load cells with a 2-in diameter and 20,000 lb capacity install in place of the original sand shoe pins. Complimenting sand shoes are included to distribute the force to the load cells properly.

Complete Kit Includes

- Two 2-in, 20,000 lb load cell pins
- Two sand shoes
- Four load distribution spacers
- Two bolts for anti-rotation of load cell

Standard Features

- System capacity: 40,000 lb
- Load cell with connectors, M12
- 20 × 13 ft heavy-duty painted sand shoe