

SLP-5 Configuration for Uni-3, Uni-5, Uni-7 & WM-Nano Chinese BIG5 Characters

The Uni-3, Uni-5, Uni-7 scales and WM-Nano wrapper can display and print PLU information in Chinese BIG5, also known as Traditional, characters but all menus, etc. remain in English. Chinese characters are entered in SLP-5 and sent to the scales. Chinese characters cannot be entered at the scales. Refer to the following procedure to configure the scales and wrapper and SLP-5.

SCALE SETUP

Update the firmware for the Uni-5, Uni-7 and WM-Nano to the following versions.

Uni-5: C1830x

Uni-7: C1828x (PK-260A CF CPU), C2072x (PK-260B SD CPU)

WM-Nano: C1832x (PK-260A CF CPU), C2074x (PK-260B SD CPU)

Uni-3: C1937U or later, C2271x

The Language setting in the Uni-3 must be set to print and display Chinese characters.

Note: Only the Uni-3L2 models display Chinese characters.

KEY IN ITEM No. 0.000 0.000 0.00 0.00	Enter 6000 , press MODE
<B00 SETUP> <B00 SETUP>	Enter 495344 , press PLU
<B00 SETUP> <B00 SETUP>	Enter 26 , press Down Arrow
B26 COUNTRY B26 COUNTRY	Press ENTER
*LANGUAGE → 1: ENGLISH B26-01-02 LANGUAGE 1	Enter 15 , press ENTER
*LANGUAGE → 15: FORMOSAN B26-01-02 LANGUAGE 15	After the long beep press MODE
REBOOT 19004-0000	Shut off the scale for this setting change to take effect.

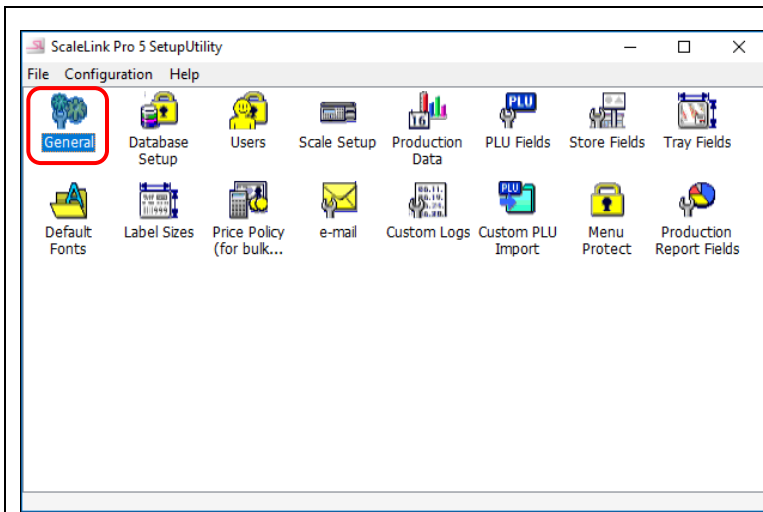
SLP-5 SETUP

SLP-5 must be configured to use Chinese fonts. Refer to the instructions below.

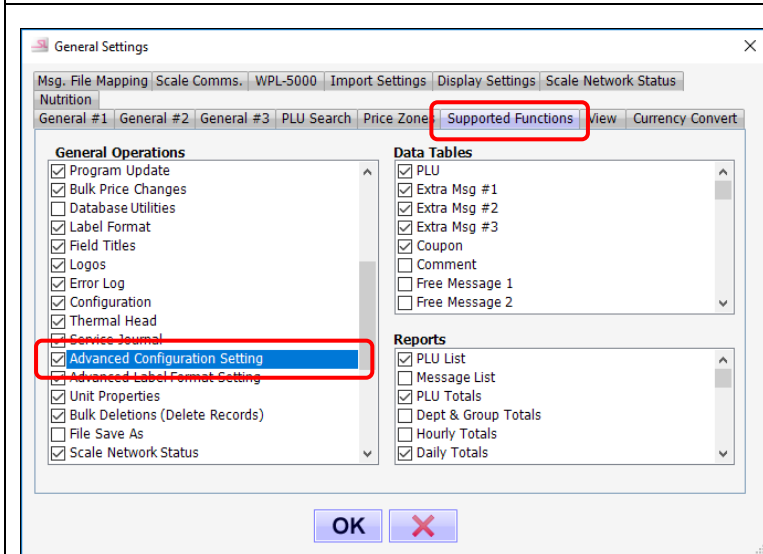
The following Chinese character sizes are available.

- 32x32 SLP-5 size Large (2xW) [Item Name]
- 24x24 SLP-5 size Medium (2xW) [Messages]
- 16x16 SLP-5 size Small (2xW) [Ingredients]

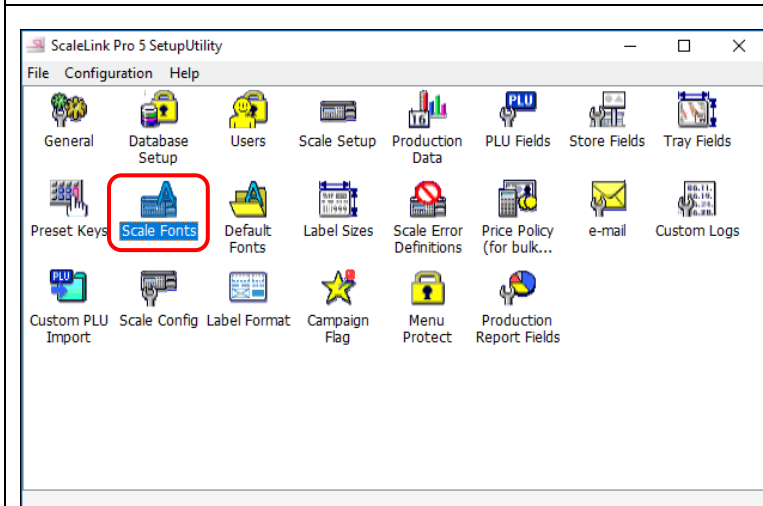
SLP-5 Configuration for Uni-3, Uni-5, Uni-7 & WM-Nano Chinese BIG5 Characters



1. Open **Setup Utility**.
2. Select **General**.

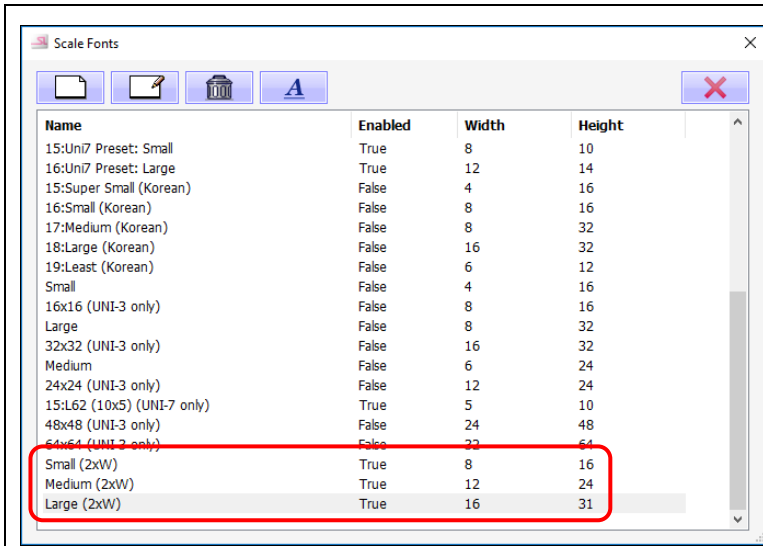


1. Select "Supported Functions".
2. Enable "Advanced Configuration Setting".
3. Click **OK**.



1. Select **Scale Fonts**.

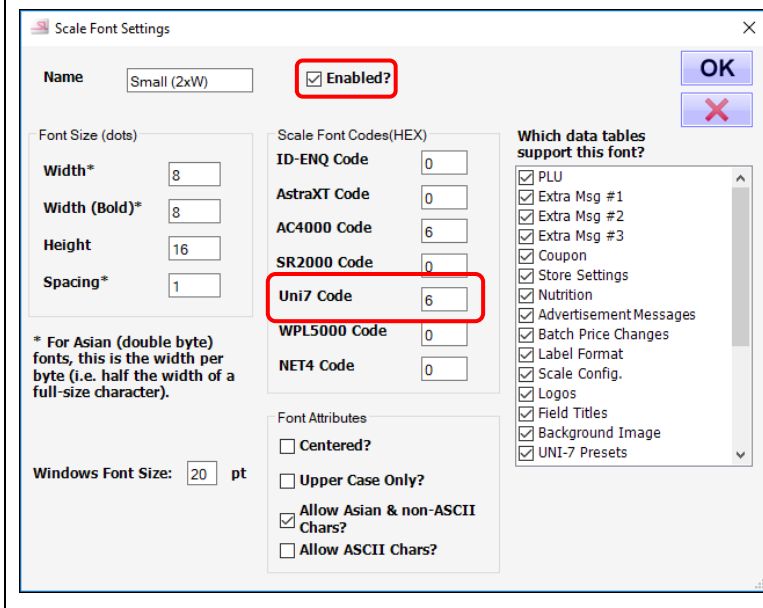
SLP-5 Configuration for Uni-3, Uni-5, Uni-7 & WM-Nano Chinese BIG5 Characters



The list of "Scale Fonts" is displayed.

1. Select **Small (2xW)**.
2. Click the "Edit" icon.

Note: If "Small (2xW)" is not listed click the "Add" icon.



1. Check "Enabled?".
2. Set the Uni-7 "Scale Font Codes (HEX)" value as "6" (same value as AC-4000).
3. Click **OK**.

Note: If adding the "Small (2xW)" font enter all the settings as shown at the left.

SLP-5 Configuration for Uni-3, Uni-5, Uni-7 & WM-Nano Chinese BIG5 Characters

Scale Font Settings

Name: Medium (2xW) Enabled? OK X

Font Size (dots)

Width*: 12

Width (Bold)*: 13

Height: 24

Spacing*: 2

* For Asian (double byte) fonts, this is the width per byte (i.e. half the width of a full-size character).

Windows Font Size: 20 pt

Scale Font Codes(HEX)

ID-ENQ Code: 0

AstraXT Code: 0

AC4000 Code: c

SR2000 Code: 0

Uni7 Code: c

WPL5000 Code: 0

NET4 Code: 0

Font Attributes

Centered?

Upper Case Only?

Allow Asian & non-ASCII Chars?

Allow ASCII Chars?

Which data tables support this font?

- PLU
- Extra Msg #1
- Extra Msg #2
- Extra Msg #3
- Coupon
- Store Settings
- Nutrition
- Advertisement Messages
- Batch Price Changes
- Label Format
- Scale Config.
- Logos
- Field Titles
- Background Image
- UNI-7 Presets

Repeat for "Medium (2xW)".

1. Check "Enabled?".
2. Set the Uni-7 "Scale Font Codes (HEX)" value as "c" (same value as AC-4000).
3. Click **OK**.

Note: If adding the "Medium (2xW)" font enter all the settings as shown at the left.

Scale Font Settings

Name: Large (2xW) Enabled? OK X

Font Size (dots)

Width*: 16

Width (Bold)*: 16

Height: 31

Spacing*: 2

* For Asian (double byte) fonts, this is the width per byte (i.e. half the width of a full-size character).

Windows Font Size: 20 pt

Scale Font Codes(HEX)

ID-ENQ Code: 0

AstraXT Code: 0

AC4000 Code: f

SR2000 Code: 0

Uni7 Code: f

WPL5000 Code: 0

NET4 Code: 0

Font Attributes

Centered?

Upper Case Only?

Allow Asian & non-ASCII Chars?

Allow ASCII Chars?

Which data tables support this font?

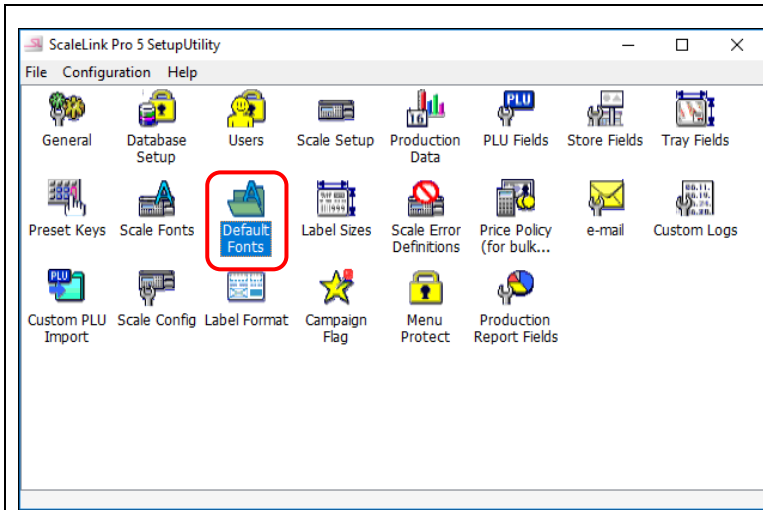
- PLU
- Extra Msg #1
- Extra Msg #2
- Extra Msg #3
- Coupon
- Store Settings
- Nutrition
- Advertisement Messages
- Batch Price Changes
- Label Format
- Scale Config.
- Logos
- Field Titles
- Background Image
- UNI-7 Presets

Repeat for "Large (2xW)".

1. Check "Enabled?".
2. Set the Uni-7 "Scale Font Codes (HEX)" value as "f" (same value as AC-4000).
3. Click **OK**.

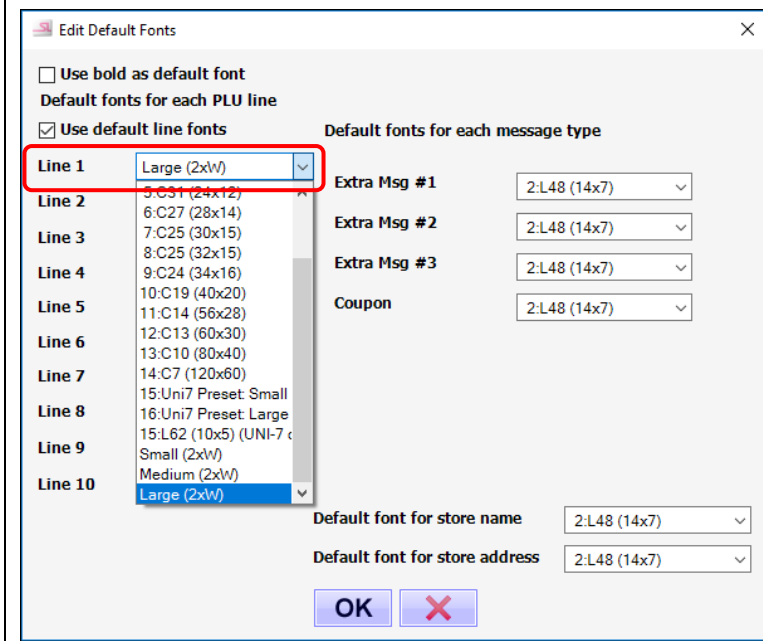
Note: If adding the "Large (2xW)" font enter all the settings as shown at the left.

SLP-5 Configuration for Uni-3, Uni-5, Uni-7 & WM-Nano Chinese BIG5 Characters



1. Select **Default Fonts**.

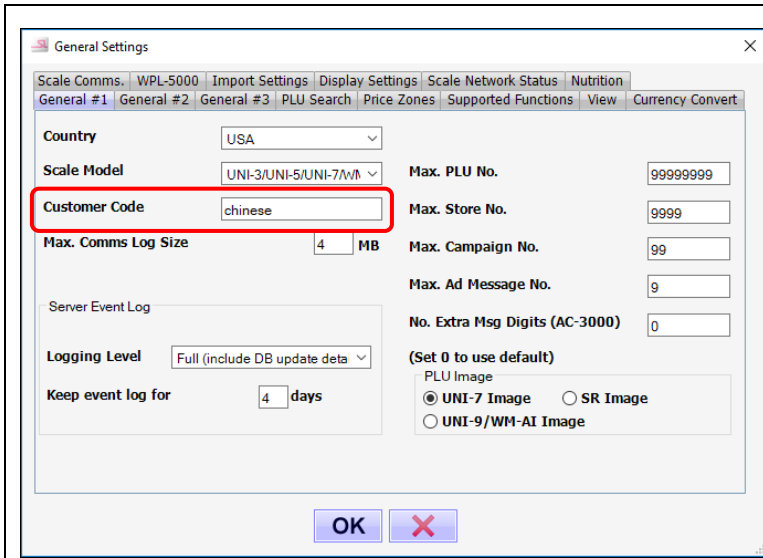
This is to set which line is Chinese BIG5 and which line is English.



At the "Edit Default Fonts" screen select the font for each line.

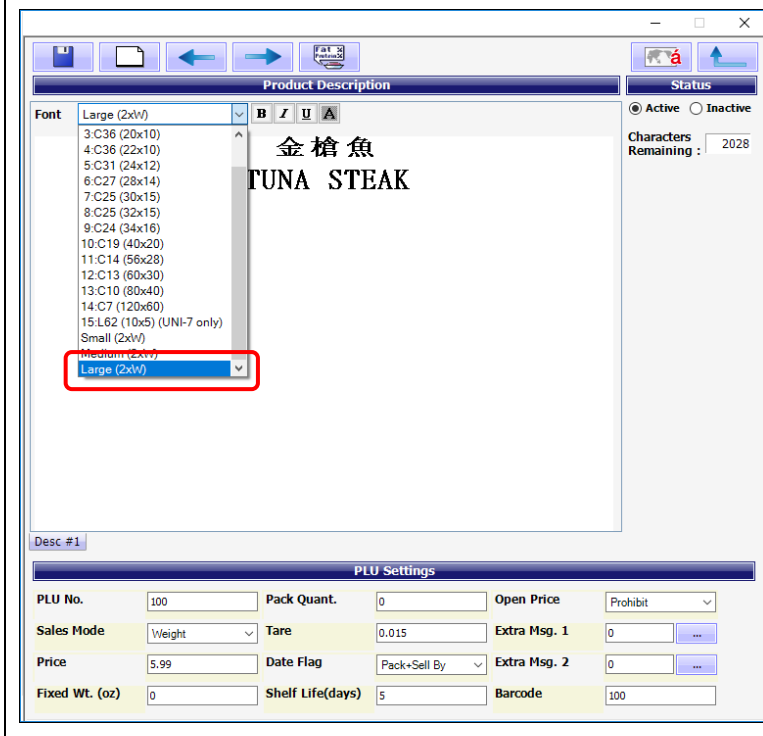
1. Change "Line 1" to "Large (2xW)" or "Medium (2xW)".
2. Change "Line 2" to size "5:C31" or "7:C25".
3. Click **OK** when finished.

SLP-5 Configuration for Uni-3, Uni-5, Uni-7 & WM-Nano Chinese BIG5 Characters



1. Select **General** again.
2. Enter "chinese" in the "Customer Code" field.
3. Click **OK** when finished.

This completes the Setup Utility configuration for Chinese BIG5 characters.



Then, when editing a PLU Name be sure to select "Large (2xW)" or "Medium (2xW)" for Chinese BIG5 characters. For standard English characters select "5:C31" or "7:C25".

SLP-5 Configuration for Uni-3, Uni-5, Uni-7 & WM-Nano Chinese BIG5 Characters



Sample Label



© Rice Lake Weighing Systems Specifications subject to change without notice.
Rice Lake Weighing Systems is an ISO 9001 registered company.

230 W. Coleman St. • Rice Lake, WI 54868 • USA
U.S. 800-472-6703 • Canada/Mexico 800-321-6703 • International 715-234-9171 • Europe +31 (0)26 472 1319

www.ricelake.com/retail

www.ricelake.mx

www.ricelake.eu

www.ricelake.co.in