

ERIEZ

Eriez' highly sensitive X8 Metal Detector detects small ferrous, non-ferrous and stainless steel metal contaminants in packaged and bulk flow applications.

The X8 performance combined with its dependability, feature-packed controls, and price make it one of the best values on the market today.

The rugged, reliable X8 Metal Detector is equipped with an extra large, easy-to-use capacitive touch screen, and high-pressure wash down construction.

PrecisionGuard X8 Metal Detector

Reliable & Easy-to-Use

APPLICATIONS

- Packaged Products
- Raw or Bulk Flow Material

INDUSTRIES

- Food
- Packaging
- Beverage
- Pharmaceutical
- Chemical
- Plastics
- Rubber
- Textiles

SPECIFICATIONS

Technology	Balanced coil design
Languages	English
Wash-down	NEMA 4X/PW 12 and IP69 (80° C (176°F) water at 100 bar (1450 psi))

X8 FEATURES

- Highly dependable detection
- Easy-to-use large user interface
- Rugged construction for all environments
- Auto set up and adaptive product learning
- Easily change product settings
- Four password-protected levels of access
- Multiple communication ports – USB and Ethernet
- Digitally stores verifications, rejects and events
- Download reject and event logs over LAN



PrecisionGuard X8 Metal Detector

Control

- 257mm (10.1") capacitive touch screen
- Powerful processor speeds graphing display and minimizes lag time
- High capacity memory for product settings and reject and event logs
- Convenient USB and Ethernet connection ports
- Sloped control with improved sanitary design
- Traceability to support HACCP, GFSI, SQF requirements

Standard Sizes

Width:	200mm (8-inch) x	350mm (14-inch) x	500mm (20-inch) x	650mm (26-inch) x
Height:	100mm (4-inch)	–	–	–
	150mm (6-inch)	150mm (6-inch)	150mm (6-inch)	150mm (6-inch)
	200mm (8-inch)	200mm (8-inch)	200mm (8-inch)	200mm (8-inch)
	250mm (10-inch)	250mm (10-inch)	250mm (10-inch)	250mm (10-inch)
	300mm (12-inch)	300mm (12-inch)	300mm (12-inch)	300mm (12-inch)
	–	350mm (14-inch)	350mm (14-inch)	350mm (14-inch)
	–	–	400mm (16-inch)	400mm (16-inch)
	–	–	450mm (18-inch)	450mm (18-inch)
	–	–	500mm (20-inch)	500mm (20-inch)



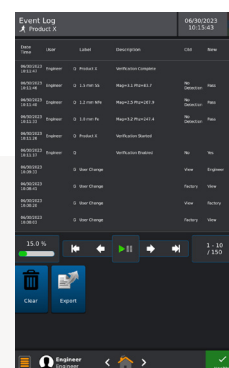
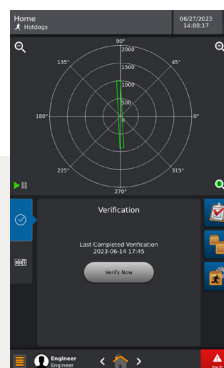
OUTPUTS:

- 4 programmable "Form C" (NO-C-NC) relays rated at 5A up to 250VAC, 30VDC each.
- 5 programmable "Form A" (SPST-NO) solid state relay outputs rated at 500mA up to 40VDC. These five outputs can be wired as NPN or PNP. The output can be set to NO or NC under normal running conditions.

INPUTS:

Eight configurable inputs set to “Active High or Low”

- Input voltage: High = 10 – 30VDC, Low = 0 – 0.9VDC
- Input impedance = 2.8Ω , Current requirement = 3 – 10mA
- Tachometer
- Conveyor running
- Reject confirmation
- Air pressure failure
- Product counter



AMBIENT TEMPERATURE RANGE:

- Integral Control -10°C (14°F) to 49°C (120°F)
- Remote Control -10°C (14°F) to 54°C (130°F)

POWER REQUIREMENT:

- AC IN 100-240 10A Max 50/60Hz 1 Phase



RICE LAKE
WEIGHING SYSTEMS

www.ricelake.com