

Picture is a representation of actual product

#### Approvals

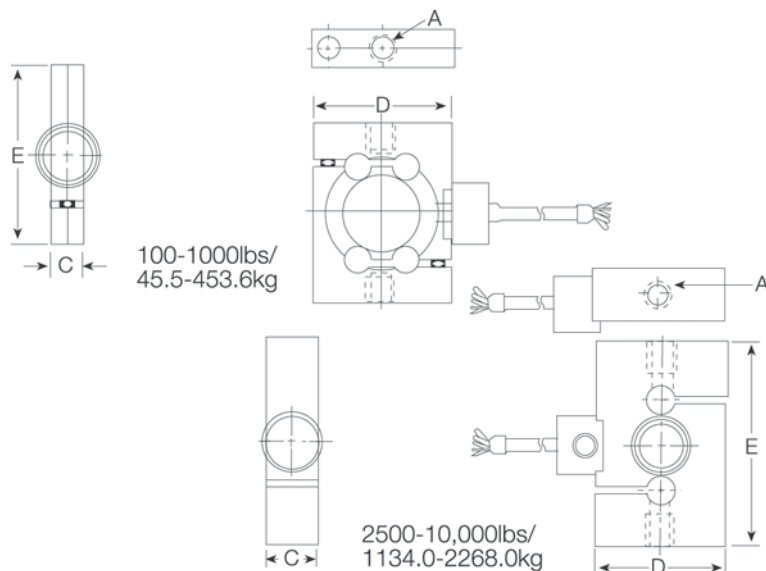


#### Order Information

Load Rating	Part #	Est. Weight	Price
<b>NTEP Certified</b>			
100 lb	21447	3 lb	Consult
250 lb	21448	3 lb	Consult
500 lb	21449	3 lb	Consult
1,000 lb	21450	3 lb	Consult
2,500 lb	21451	4 lb	Consult
5,000 lb	21452	6 lb	Consult
<b>Non-NTEP Certified</b>			
10,000 lb	17032	6 lb	Consult

#### Dimensions

Rated Capacity	A	C	D	E
lb/in				
100 to 250	3/8-24 UNF	0.94	2.48	3.32
500	1/2-20 UNF	0.71	2.44	3.50
1,000	1/2-20 UNF	0.71	2.44	3.50
2,500	1/2-20 UNF	0.95	2.44	3.75
5,000 to 10,000	1-14 UNS	1.44	2.44	4.75



#### Weigh Module Available

RICE LAKE WEIGHING SYSTEMS

**ITCM Isolated**

**Tension Cell Mount.....page 34**

#### Specifications

##### Full Scale Output:

3.0 mV/V

##### Output Resistance:

350 ( $\pm 3.5$ ) ohm

##### Input Resistance:

350 ( $\pm 3.5$ ) ohm

##### Material/Finish:

Stainless steel

##### Temperature:

Compensated:

14 °F to 104 °F (-10 °C to 40 °C)

Operating:

0 °F to 150 °F (-18 °C to 65 °C)

##### Seal Type:

Welded-seal, IP67

##### Safe Overload:

150% full scale

##### Rated Excitation:

5 to 10 VDC (15 V maximum)

##### Combined Error:

0.03% full scale

##### Non-repeatability:

0.01% full scale

##### Insulation Resistance:

5,000 megohm

##### Cable Length:

30 ft

##### Cable Color Code:

Green +Excitation

Black -Excitation

White +Signal

Red -Signal

##### Warranty:

One-year limited

##### Approvals:

NTEP

cFMus