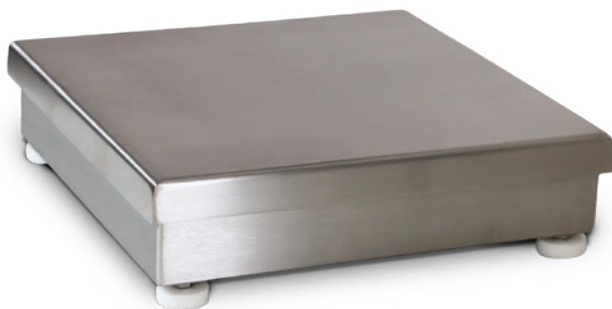


BenchMark® SL/HE

Light-capacity Bench Scales



Specifications

Load Cell:

Stainless steel, hermetically sealed IP69K

Output Impedance:

1.000 ohms

Overload Protection:

Shock-absorbing LifeGuard™ design

Cable Length:

3 m

Compensated Temperature Range:

-10°C to 40°C

Warranty:

Three-year limited warranty including water ingress

Standard Features

- 304 stainless steel construction
- LifeGuard™ base design isolates load cell from overloads and shock loads for added durability
- Specially designed adjustable support feet provide exceptional traction and won't scratch surfaces

*Additional models are available with the approvals shown here
Please consult the factory for part numbers.*

Approvals



Measurement
Canada
Approved

Part Number/Price

Part #	Capacity	Dimensions	Est. Weight	Price
124476	3 kg	254 x 254 x 91 mm	5,9 kg	Consult
124478	6 kg	254 x 254 x 91 mm	5,9 kg	Consult
124480	15 kg	254 x 254 x 91 mm	5,9 kg	Consult
124481	15 kg	305 x 305 x 92 mm	6,4 kg	Consult
124482	30 kg	305 x 305 x 92 mm	6,4 kg	Consult
124483	60 kg	305 x 305 x 92 mm	6,4 kg	Consult

Options/Accessories

Part #	Description	Price
112044	305 mm column for CW-90, CW-90X, 480 and 482 Legend™ Series	Consult
112045	457 mm column for CW-90, CW-90X, 480 and 482 Legend™ Series	Consult
64576	Attachment bracket for 480 and 482 Legend™ Series	Consult
22125	Additional operating manual	Consult
N/A	Installation, testing, configuration and verification	Consult factory

Dimensions

Part #	Capacity	Platform Size L/W	L1/W1	H
124476	3 kg	254 x 254 mm	260 mm	91 mm
124478	6 kg	254 x 254 mm	260 mm	91 mm
124480	15 kg	254 x 254 mm	260 mm	91 mm
124481	15 kg	305 x 305 mm	311 mm	92 mm
124482	30 kg	305 x 305 mm	311 mm	92 mm
124483	60 kg	305 x 305 mm	311 mm	92 mm

