

VPG Tedea-Huntleigh

TABLE OF CONTENTS

S-BEAMS

Page 341

620, STAINLESS STEEL



Ideally suited for harsh environments, lever conversions, hopper/tanks, vibratory feeders, general purpose weighing and force measurement applications. The stainless steel, welded cavity design provides protection against water and corrosive materials. Capacities range from 500 kg to 2,000 kg. Complete with 5 m of load cell cable.



SINGLE-ENDED

Page 342

3411/3421, ALLOY STEEL AND STAINLESS STEEL



This family of high quality, single-ended beams is available in both alloy and stainless steel with NTEP Certification. These products are ideal for low-profile platforms, pallet truck weighers, tanks and silos. The durable stainless steel product offering is new and provides a solid choice for more severe weighing applications. Both versions are available in capacities ranging from 1,000 lb to 10,000 lb. A standard 10 ft of load cell cable is provided.



Page 343

3510-NTEP, STAINLESS STEEL



Low profile and all-welded sealing combined with high accuracy makes the 3510 ideally suited for low-profile platforms, weigh modules, tanks and silos. Hermetic sealing and polyurethane shielded cable enable it to function in harsh environments while maintaining its operating specifications. Capacities range from 1,000 lb to 4,000 lb.



Page 344

3510-OIML, STAINLESS STEEL



This 3510 is a 6,000 division OIML approved single-ended beam. Low profile and all-welded sealing combined with high accuracy makes the 3510 ideally suited for low-profile platforms, weigh modules, tanks and silos. Polyurethane shielded cable enable it to function in harsh environments while maintaining its operating specifications. Capacities range from 500 kg to 5,000 kg.



Page 345

355, STAINLESS STEEL



Welded stainless steel construction, welded sealing and polyurethane shielded cable enables the 355 to function in harsh environments while maintaining its operating specifications. Suitable for low-profile platforms, weighing and packing machines, electromechanical conversions and general-purpose weighing applications. Capacities range from 5 kg to 500 kg.



SINGLE POINT

Page 346

1022, ALUMINUM



Very low profile, single-point load cell designed for direct mounting in low-cost platforms. Anodized aluminum construction is combined with two-beam machined technology to provide an affordable load cell option. Capacities range from 3 kg to 35 kg. Complete with 1.5 ft or 10 ft of load cell cable.



Page 347

1010/1015, ALUMINUM



Off-center loading load cell designed for direct mounting of a weighing platform and simplifying construction of platform scales. Long-term stability and durability are maintained. Load cells with potted cavities are available for improved performance in damp environments. The model 1015 has a balanced bridge for applications where multiple cells are used. Capacities range from 3 kg to 90 kg.



VPG Tedea-Huntleigh

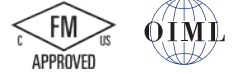
SINGLE POINTS

Page 348

1030, ALUMINUM



This high-performance product is the standard in many of today's postal or price computing scales. This very low-profile, three-beam single point load cell is insensitive to off-center loads, which is a critical element in providing accurate results. The 1030 is also coated with a unique humidity-resistant protective coating to assure long-term stability in harsh environments and extreme temperatures. This model is available in capacities ranging from 3 kg to 15 kg, and comes standard with 1 m of load cell cable.



Page 349

1042, ALUMINUM



A lower-profile single point load cell for platform weighing. This model is constructed of aluminum and is a two-beam design. This design offers high immunity to side forces and is specially coated to provide humidity resistance. Capacities range from 1 kg to 100 kg. Complete with 10 ft of load cell cable.



Page 350

1040, ALUMINUM



Low-profile, off-center loading load cell. Designed for direct mounting of weighing platforms, hanging scales and other low capacity beam applications. Long-term stability and durability are maintained. Load cells with potted cavities are available for improved performance in damp environments. Capacities range from 5 kg to 100 kg.



Page 351

1130, STAINLESS STEEL



The VPG® Tedea-Huntleigh 1130 is a stainless steel, single-point load cell that is designed for high performance in harsh environments. This product is primarily designed for platform weighing but is cost-effective to make it an appropriate selection for numerous applications. Capacities range from 7.5 kg to 100 kg and is provided complete with 1.5 m, 3 m or 25 ft of load cell cable.



Page 352

1140, STAINLESS STEEL



Low-profile, off-center loading load cell designed for direct mounting of weighing platforms, hanging scales and other low capacity beam applications. Stainless steel construction and a unique humidity-resistant protective coating provide long-term stability, even in harsh environments. Load cells with potted cavities are available for improved performance in damp environments. Capacities range from 15 kg to 150 kg.



Page 353

1240, STAINLESS STEEL



The 1240 is a low-profile single point load cell that is compact in design, considering the 200 kg and 250 kg capacity range. This cell is ideally suited for light-industrial or people-weighing applications where overall deck height is a concern. The three-beam design makes the load cell less likely to be impacted by side forces and mounting imperfections. It features stainless steel construction and humidity-resistant coating for use in harsh environments with extreme temperatures. Each unit is provided with a standard 10 ft cable.



VPG Tedea-Huntleigh

SINGLE POINTS

Page 354

1142, STAINLESS STEEL



Its small physical size, combined with high accuracy and low cost make the 1142 the perfect selection for new or retrofit scales. Stainless steel construction along with a humidity-resistant protective coating helps ensure stable operation in damp environments. The 1142 is NTEP Certified and is available with OIML approval. It comes with 10 ft of standard load cell cable. Capacities range from 10 kg to 150 kg.



Page 355

1260, ALUMINUM



High capacity, off-center loading aluminum single-point load cell. This model is of the two-beam design, and is specially coated to assure durability in harsh environments. Capacities range from 50 kg to 635 kg. Complete with 10 ft of load cell cable.



Page 356

1260S, ALUMINUM



This single-point, off-center loading, aluminum load cell is designed for high-capacity applications and harsh environments. NTEP Certified to 10,000 divisions. Capacities range from 75 kg to 635 kg. Complete with 10 ft of load cell cable.



Page 357

1263, ALUMINUM



The rugged construction of the 1263 offers high immunity to side loads, making it suitable for a wide array of applications like bench scales and process weighing. Its special humidity resistant protective coating helps assure long-term stability over the entire compensated range. It is constructed of high quality aluminum and comes standard with 1.5 meters of load cell cable. The 1263 is available in capacities from 50 kg to 635 kg and is OIML approved.



Page 358

1250, ALUMINUM



High capacity, off-center loading load cell accurately weighs loads from 50 kg to 1,000 kg. Long-term stability and durability are maintained. Load cells with potted cavities are available for improved performance in damp environments.



Page 359

1320, ALUMINUM



Model 1320 is a high capacity single-point load cell. Direct mounting of low-profile platforms simplifies the construction of floor scales, weigh bars, hanging scales and other types of weighing devices. Individually adjusted to eliminate corner errors. Capacities range from 1,000 kg to 2,000 kg.



VPG Tedea-Huntleigh

Page 360

1510, STAINLESS STEEL



The 1510 is a stainless steel, welded-seal cell ideally suited for washdown applications. Capacities range from 100 kg to 500 kg.



Page 361

240, ALLOY STEEL/STAINLESS STEEL, FLUID DAMPED



These load cells decrease weighing time and improve weighing accuracy in high-speed weighing applications. Since damping also protects the cells from shock and vibration, the load cell can endure harsh conditions, such as those encountered in repeated shock-loading applications. This also enables damped load cells to last longer than undamped load cells in any application. The cells are sealed, protecting them in washdown situations. Capacities range from 2 kg to 50 kg.



Page 362

9010, ALUMINUM, FLUID DAMPED



Model 9010 is a self-contained weighing module for use in repeated shock-loading applications or where fast weighing and settling times are required. Each is custom manufactured per specific application requirements. Capacities range from 3 kg to 50 kg.



PLANAR BEAM

Page 363

380, ALUMINUM



Model 380 is a very low profile planar beam design, allowing direct mounting in low profile platform scales. The range of capacities and low profile makes model 380 most suitable for use in a wide range of applications.



COMPRESSION CANISTER

Page 364

220, STAINLESS STEEL



Model 220 is a low profile, bending ring load cell designed for high capacity weighing applications, including weighbridges, tanks, silos, high capacity platform scales and force measurement. OIML approved.



Page 365

120, STAINLESS STEEL



The model 120 is a stainless steel, welded -seal canister offered in capacities from 20,000 kg to 50,000 kg and includes load cup and load pin.

Page 366

VPG® TEDEA-HUNTLEIGH MODEL 9010 APPLICATION DEFINITION FORM

Weigh Module Available

RICE LAKE WEIGHING SYSTEMS
ITCM Isolated Tension
Cell Mount.....page 44

Specifications

- Full Scale Output:**
2.0 mV/V
- Output Resistance:**
350 (± 3) ohm
- Input Resistance:**
400 (± 20) ohm
- Material/Finish:**
Stainless steel
- Temperature:**
Compensated range
14°F to 104°F (-10°C to 40°C)
Operating range
0° F to 150° F (-18° C to 65° C)

- Seal Type:**
Welded-seal, IP68
- Safe Overload:**
150% full scale
- Rated Excitation:**
5-10 VDC (15 V maximum)

- Combined Error:**
0.02% full scale
- Insulation Resistance:**
1,000 megohms
- Cable Length:**
5 m

- Cable Diameter:**
0.220 in polyurethane jacket

- Cable Color Code:**
Blue +Excitation
Black -Excitation
White +Signal
Red -Signal
Green +Sense
Grey -Sense

- Warranty:**
One-year limited warranty

- Approvals:**
cFMus
NTEP
Ex (Available upon request)
OIML (Available upon request)

APPROVALS



Available upon request



Available upon request



Dimensions

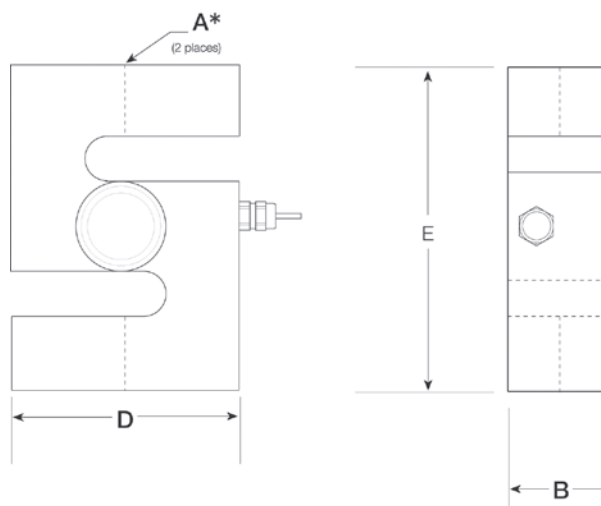
Picture is a representation of actual product

Rated Capacity	A*	B	D	E
kg/mm				
500-1,000	1/2-20 UNF	33.5	73.2	94.0
2,000	3/4-16 UNF	33.5	73.2	94.0

*Metric threads available

Order Information

Load Rating	Part #	Est. Weight	Price
500 kg	36389	4 lb	\$689.00
1,000 kg	36390	4 lb	\$689.00
2,000 kg	36391	4 lb	\$689.00



SINGLE-ENDED BEAM 3411/3421

Alloy/Stainless Steel, Environmentally Sealed, NTEP Certified 1:3,000 Single Cell, 1:5,000 Multiple Cell Class III, IP67



APPROVALS



Available upon request



Available upon request

Interchangeable Products

- RICE LAKE WEIGHING SYSTEMS
RL30000I page 142
- RICE LAKE WEIGHING SYSTEMS
RL39123* page 145
- VPG® REVERSE
5123 page 282
- VPG® REVERSE
9123* page 283

Weigh Module Available

- RICE LAKE WEIGHING SYSTEMS
RL50210TA page 50
- RICE LAKE WEIGHING SYSTEMS
RL1800 Series page 62

*Stainless steel

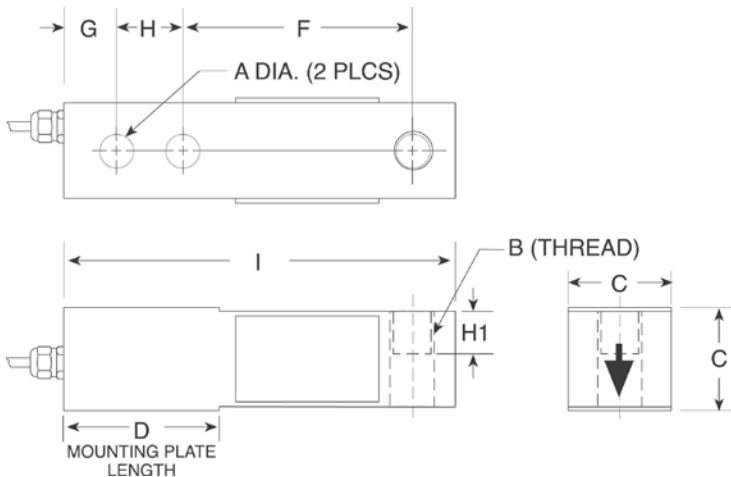
Dimensions

Picture is a representation of actual product

Rated Capacity	A	B	C	D	F	G	H	H1	I
lb/in									
1,000-4,000	0.53	1/2-20 UNF	1.24	2.25	3.00	0.63	1.00	0.60	5.12
5,000-10,000	0.78	3/4-16 UNF	1.49	3.00	3.75	0.75	1.50	0.75	6.75

Order Information

Load Rating	Part #	Est. Weight	Price
Alloy Steel			
1,000 lb	29903	3 lb	\$312.00
2,500 lb	29904	3 lb	\$312.00
4,000 lb	29905	3 lb	\$312.00
5,000 lb	29906	4 lb	\$397.00
10,000 lb	29907	4 lb	\$397.00
Stainless Steel			
1,000 lb	47871	3 lb	\$371.00
2,500 lb	47872	3 lb	\$371.00
4,000 lb	47873	3 lb	\$350.00
5,000 lb	47874	4 lb	\$445.00
10,000 lb	47875	4 lb	\$471.00



Specifications

- Full Scale Output:**
3.0 mV/V
- Output Resistance:**
351 (± 5) ohm
- Input Resistance:**
385 (± 10) ohm
- Material/Finish:**
High-alloy - nickel plated
Stainless steel
- Temperature:**
Compensated range
14°F to 104°F (-10°C to 40°C)
Operating range
0° F to 150° F (-18° C to 65° C)
- Seal Type:**
Environmentally sealed, IP67
- Safe Overload:**
150% full scale
- Safe Sideload:**
100% full scale
- Rated Excitation:**
5-10 VDC (15 V maximum)
- Combined Error:**
0.03% full scale
- Insulation Resistance:**
2,000 megohms
- Deflection at Capacity:**
1,000-10,000 lb=0.015 in

- Cable Length:**
10 ft
- Cable Diameter:**
0.200 in PVC jacket
- Cable Color Code:**
Red +Excitation
Black -Excitation
Green +Signal
White -Signal
Blue +Sense
Brown -Sense

Warranty:
One-year limited warranty

- Approvals:**
cFMus
NTEP
Ex (Available upon request)
OIML (Available upon request)

Interchangeable Products

- VPG® SENSORTRONICS
65083..... page 320
- VPG® CELTRON
SQB-HSS..... page 228

Weigh Module Available

- RICE LAKE WEIGHING SYSTEMS
RL1700 HE.....page 34

Specifications

- Full Scale Output:**
3.0 mV/V
- Output Resistance:**
350 (± 3) ohm
- Input Resistance:**
415 (± 15) ohm
- Material/Finish:**
Stainless steel
- Temperature:**
Compensated range
14°F to 104°F (-10°C to 40°C)
Operating range
0° F to 150° F (-18° C to 65° C)

- Seal Type:**
Welded-seal, IP68
- Safe Overload:**
150% full scale
- Safe Sideload:**
100% full scale
- Rated Excitation:**
5-10 VDC (15 V maximum)
- Combined Error:**
0.02% full scale
- Insulation Resistance:**
1,000 megohms
- Deflection at Capacity:**
1,000-4,000 lb=0.015 in
- Cable Length:**
5 m
- Cable Diameter:**
0.220 in polyurethane jacket
- Cable Color Code:**
Blue +Excitation
Black -Excitation
White +Signal
Red -Signal
Green +Sense
Grey -Sense

Warranty:
One-year limited warranty

Approvals:
cFMus
NTEP

APPROVALS



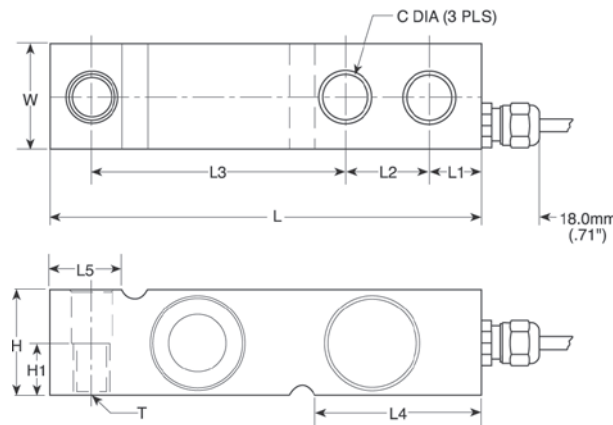
Dimensions

Picture is a representation of actual product

Rated Capacity	C	C1	H	H1	L	L1	L2	L3	L4	L5	T	W
lb/in												
1,000-4,000	0.53	0.53	1.26	0.63	5.12	0.62	1.00	3.00	1.97	0.91	1/2-20 UNF	1.26

Order Information

Load Rating	Part #	Est. Weight	Price
1,000 lb	36458	3 lb	\$515.00
1,500 lb	36459	3 lb	\$515.00
2,500 lb	36460	3 lb	\$515.00
4,000 lb	36461	3 lb	\$515.00



SINGLE-ENDED BEAM

3510-OIML

Stainless Steel, Welded Seal, OIML C3, IP68



APPROVALS



Available upon request

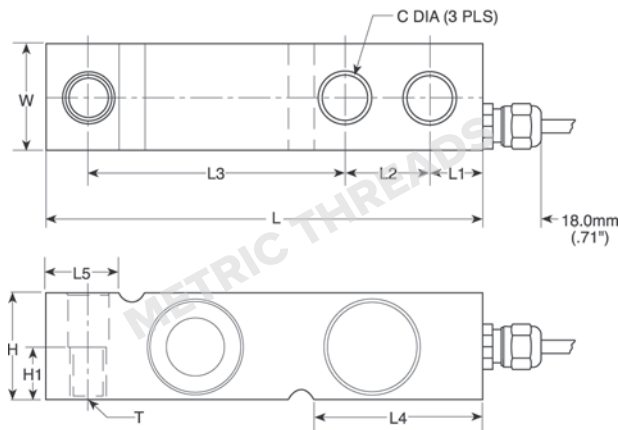
Dimensions

Picture is a representation of actual product

Rated Capacity	C	C1	H	H1	L	L1	L2	L3	L4	L5	T	W
kg/mm												
500-2,000	13.5	13.5	32.0	16.0	130.0	15.8	25.4	76.2	50.5	23.5	M12 × 1.75 Thrd.	32.0
5,000	20.5	20.5	48.0	—	171.5	19.0	38.1	95.3	70.0	37.0	—	36.5

Order Information

Load Rating	Part #	Est. Weight	Price
500 kg	30161	3 lb	\$514.00
1,000 kg	30162	3 lb	\$514.00
2,000 kg	30163	3 lb	\$514.00
5,000 kg	30164	5 lb	\$514.00



Interchangeable Products

RICE LAKE WEIGHING SYSTEMS
RLHTOpage 150

Weigh Module Available

RICE LAKE WEIGHING SYSTEMS
RL1700 HEpage 34

Specifications

Full Scale Output:
2.0 mV/V

Output Resistance:
350 (± 3) ohm

Input Resistance:
380 (± 10) ohm

Material/Finish:
Stainless steel

Temperature:
Operating range
0° F to 150° F (-18° C to 65° C)

Seal Type:
Welded-seal, IP68

Safe Overload:
150% full scale

Safe Sideload:
100% full scale

Rated Excitation:
5-10 VDC (15 V maximum)

Combined Error:
0.02% full scale

Insulation Resistance:
2,000 megohms

Deflection at Capacity:
500-5,000 kg=0.015 in

Cable Length:
5 m

Cable Diameter:
0.220 in polyurethane jacket

Cable Color Code:
 Blue +Excitation
 Black -Excitation
 White +Signal
 Red -Signal
 Green +Sense
 Gray -Sense

Warranty:
One-year limited warranty

Approvals:
 cFMus
 OIML
 Ex (Available upon request)

Stainless Steel, Welded Seal, NTEP Certified 1:4,000 Single Cell, 1:5,000 Multiple Cell Class III, IP68

Interchangeable Products

RICE LAKE WEIGHING SYSTEMS

RLHBB..... —

RICE LAKE WEIGHING SYSTEMS

RL9018SS.....page 141

VPG® REVERE

SHB.....page 289

HBM®

Z6.....page 262**Weigh Module Available**

RICE LAKE WEIGHING SYSTEMS

RL1700 HE.....page 34**Specifications****Full Scale Output:**

2.0 mV/V

Output Resistance:

355 (± 5) ohm

Input Resistance:

380 (± 10) ohm

Material/Finish:

Stainless steel

Temperature:

Compensated range

14°F to 104°F (-10°C to 40°C)

Operating range

0° F to 150° F (-18° C to 65° C)

Seal Type:

Welded-seal, IP68

Safe Overload:

150% full scale

Rated Excitation:

5- 10 VDC (15 V maximum)

Combined Error:

0.02% full scale

Insulation Resistance:

2,000 megohms

Deflection at Capacity:

5-500 kg=0.015 in

Cable Length:

10 ft

Cable Diameter:

0.220 in polyurethane jacket

Cable Color Code:

Blue +Excitation

Black -Excitation

White +Signal

Red -Signal

Green +Sense

Grey -Sense

Warranty:

One-year limited warranty

Approvals:

cFMus

NTEP

Ex (Available upon request)

OIML (Available upon request)

APPROVALS

Available upon request



Available upon request

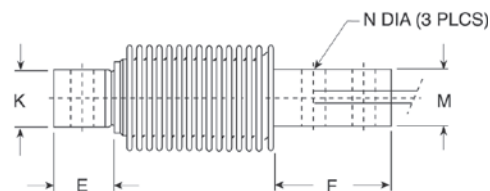
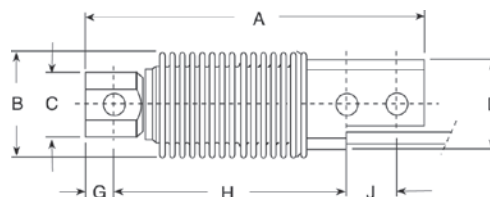
**Dimensions**

Picture is a representation of actual product

Rated Capacity	A	B	C	D	E	F	G	H	J	K	M	N
kg/mm												
5-500	120.0	40.0	23.0	32.0	20.5	45.5	10.0	82.0	18.0	20.0	20.0	8.2

Order Information

Load Rating	Part #	Est. Weight	Price
5 kg	30165	2 lb	\$556.00
10 kg	30166	2 lb	\$556.00
20 kg	30167	2 lb	\$556.00
50 kg	30168	2 lb	\$556.00
100 kg	30169	2 lb	\$556.00
200 kg	30170	2 lb	\$556.00
250 kg	30171	2 lb	\$525.00
500 kg	36463	2 lb	\$556.00





APPROVALS



Available upon request

Dimensions

Picture is a representation of actual product

Rated Capacity	A	B	C	D	E	F	G	H
kg/mm								
3-7	130.0	22.0	25.0	M6 × 1.0	25.4	15.0	106.0	12.0
10-30	130.0	22.0	25.0	M6 × 1.0	30.0	15.0	106.0	12.0
35	130.0	22.0	25.0	M6 × 1.0	40.0	15.0	106.0	12.0

Order Information

Load Rating	Part #	Est. Weight	Price
1.5 ft Cables			
3 kg	41135	2 lb	\$148.00
5 kg	41136	2 lb	\$148.00
7 kg	41137	2 lb	\$148.00
10 kg	41138	2 lb	\$148.00
15 kg	41139	2 lb	\$148.00
20 kg	41140	2 lb	\$148.00
30 kg	41141	2 lb	\$148.00
35 kg	41142	2 lb	\$148.00
10 ft Cables			
3 kg	132269	2 lb	\$148.00
5 kg	132270	2 lb	\$148.00
7 kg	132271	2 lb	\$148.00
10 kg	132272	2 lb	\$148.00
15 kg	132273	2 lb	\$148.00
20 kg	132274	2 lb	\$148.00
30 kg	132275	2 lb	\$148.00
35 kg	132276	2 lb	\$148.00
1.5 ft Cables			
10 kg	150770	2 lb	\$148.00
15 kg	150771	2 lb	\$148.00
20 kg	150772	2 lb	\$148.00
30 kg	150773	2 lb	\$148.00

Interchangeable Products

RICE LAKE WEIGHING SYSTEMS

RL1521A.....page 191

VPG® CELTRON

LPS..... page 234

VPG® BLH

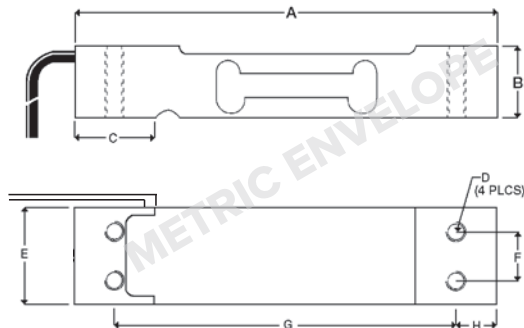
C2G1..... —

NMB®

C2G1..... —

Specifications

- Full Scale Output:**
2.0 mV/V
- Output Resistance:**
350 (± 3) ohm
- Input Resistance:**
415 (± 15) ohm
- Material/Finish:**
Anodized aluminum
- Temperature:**
Compensated range
14°F to 104°F (-10°C to 40°C)
Operating range
0° F to 150° F (-18° C to 65° C)
- Seal Type:**
Environmentally sealed, IP66
- Safe Overload:**
150% full scale
- Rated Excitation:**
5- 10 VDC (15 V maximum)
- Combined Error:**
0.02% full scale
- Insulation Resistance:**
2,000 megohms
- Cable Length:**
10 ft
1.5 ft
- Cable Diameter:**
0.140 in PVC jacket
- Cable Color Code:**
Green +Excitation
Black -Excitation
Red +Signal
White -Signal
- Platform Size:**
13.78 in × 13.78 in
- Warranty:**
One-year limited warranty
- Approvals:**
cFMus
NTEP
OIML
Ex (Available upon request)



Interchangeable Products

RICE LAKE WEIGHING SYSTEMS
RL1010.....page 192

Specifications

- Full Scale Output:**
2.0 mV/V
- Output Resistance:**
350 (± 3) ohm
- Input Resistance:**
Model 1010=415 (± 15) ohm
Model 1015=350 (± 3) ohm
- Material/Finish:**
Aluminum
- Temperature:**
Compensated range
14°F to 104°F (-10°C to 40°C)
Operating range
0° F to 150° F (-18° C to 65° C)
- Seal Type:**
Environmentally sealed
Potted, IP67
Unpotted, IP65
- Safe Overload:**
150% at center of loading point, full scale
- Rated Excitation:**
5-10 VDC (15 V maximum)
- Combined Error:**
0.02% full scale
- Deflection at Capacity:**
0.015 in
- Cable Length:**
10 ft
- Cable Diameter:**
0.200 in PVC jacket
- Cable Color Code:**
Green +Excitation
Black -Excitation
Red +Signal
White -Signal
Blue +Sense
Brown -Sense
- Platform Size:**
15.75 in × 15.75 in
- Warranty:**
One-year limited warranty
- Approvals:**
cFMus
NTEP

APPROVALS



Picture is a representation of actual product

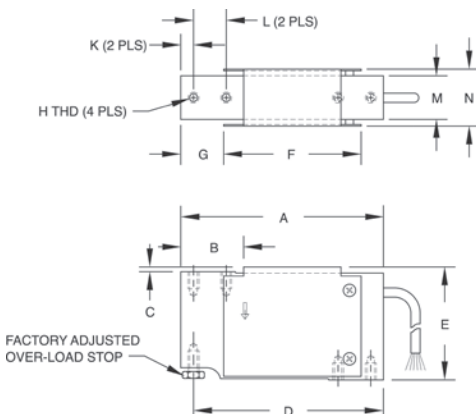
Dimensions

Rated Capacity	A	B	C	D	E	F	G	H	K	L	M	N
kg/mm												
3-90	118.0	34.0	3.0	110.5	66.0	80.0	25.0	(1010) 1/4-20 UNC × 13 DP (1015) M6 Metric	7.5	19.1	25.4	33.5

Order Information

Load Rating	Part #	Est. Weight	Price
1010 NTEP Certified, Potted			
10 kg	33727	2 lb	\$207.00
15 kg	33728	2 lb	\$207.00
20 kg	33729	2 lb	\$207.00
30 kg	33730	2 lb	\$207.00
50 kg	33731	2 lb	\$207.00
1010 Non-NTEP Certified, Potted			
5 kg	17462	2 lb	\$207.00
7 kg	17463	2 lb	\$207.00
10 kg	17464	2 lb	\$207.00
15 kg	17465	2 lb	\$207.00
20 kg	17482	2 lb	\$207.00
30 kg	17475	2 lb	\$207.00
50 kg	17476	2 lb	\$207.00
90 kg	17471	2 lb	\$207.00
1010 NTEP Certified, Unpotted			
5 kg	33732	2 lb	\$190.00
7 kg	33733	2 lb	\$190.00
1010 Non-NTEP Certified, Unpotted			
3 kg	17481	1.2 lb	\$190.00
1015 NTEP Certified, Potted			
5 kg	188805	2 lb	\$222.00
7 kg	188806	2 lb	\$222.00
10 kg	188807	2 lb	\$222.00
15 kg	188808	2 lb	\$222.00
20 kg	188809	2 lb	\$222.00
30 kg	188810	2 lb	\$222.00
50 kg	188811	2 lb	\$222.00
1015 Non-NTEP Certified, Potted			
3 kg	188804	1.2 lb	\$222.00
90 kg	188812	2 lb	\$222.00

Note: Model 1015 has M6 metric threads



SINGLE POINT

1030

Aluminum, Environmentally Sealed, OIML C2.5, IP65

VPG TEDEA-HUNTLEIGH



APPROVALS



Specifications

- Full Scale Output:**
2.0 mV/V
- Output Resistance:**
350 (± 3) ohm
- Input Resistance:**
415 (± 15) ohm
- Material/Finish:**
Anodized aluminum
- Temperature:**
Operating range
0° F to 150° F (-18° C to 65° C)
- Seal Type:**
Environmentally sealed, IP65

Safe Overload:
150% full scale

Rated Excitation:
5- 10 VDC (15 V maximum)

Combined Error:
0.02% full scale

Insulation Resistance:
5,000 megohms

Deflection at Capacity:
0.015 in

Cable Length:
1 m

Cable Diameter:
0.200 in PVC jacket

Cable Color Code:
Green +Excitation
Black -Excitation
Red +Signal
White -Signal
Blue +Sense
Brown -Sense

Platform Size:
13.78 in x 13.78 in

Warranty:
One-year limited warranty

Approvals:
cFMus
OIML

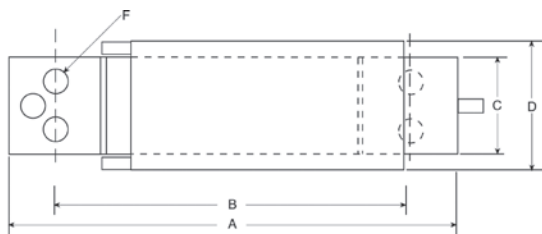
Dimensions

Picture is a representation of actual product

Rated Capacity	A	B	C	D	E	F
kg/mm						
3-15	117.9	93.7	25.4	33.3	32.5	1/4-20 UNC x 10 DP

Order Information

Load Rating	Part #	Est. Weight	Price
3 kg	47882	1lb	\$280.00
5 kg	47883	1lb	\$280.00
7 kg	47884	1lb	\$280.00
10 kg	47885	1lb	\$280.00
15 kg	47886	1lb	\$280.00



www.ricelake.com | Phone: 800-472-6703



Interchangeable Products

RICE LAKE WEIGHING SYSTEMS
RL1042.....page 196
 RICE LAKE WEIGHING SYSTEMS
RL42018A.....page 206

Specifications

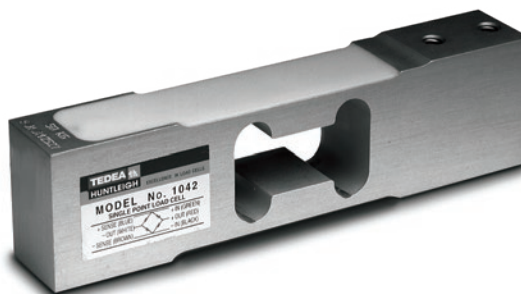
- Full Scale Output:**
2.0 mV/V
- Output Resistance:**
350 (± 3) ohm
- Input Resistance:**
415 (± 15) ohm
- Material/Finish:**
Aluminum
- Temperature:**
Compensated range
14°F to 104°F (-10°C to 40°C)
Operating range
0° F to 150° F (-18° C to 65° C)
- Seal Type:**
Environmentally sealed, IP66
- Safe Overload:**
150% full scale
- Rated Excitation:**
5- 10 VDC (15 V maximum)
- Combined Error:**
0.02% full scale
- Deflection at Capacity:**
0.015 in
- Insulation Resistance:**
2,000 megohms
- Cable Length:**
10 ft
- Cable Diameter:**
0.200 in PVC jacket
- Platform Size:**
16 in × 16 in
- Cable Color Code:**
Green +Excitation
Black -Excitation
Red +Signal
White -Signal
Blue +Sense
Brown -Sense

- Warranty:**
One-year limited warranty
- Approvals:**
NTEP
cFM
OIML (Available upon request)

APPROVALS



Available upon request



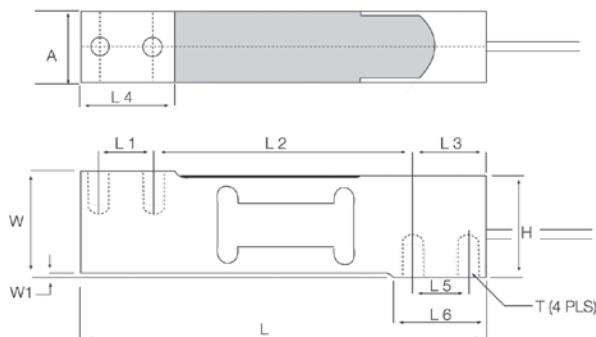
Picture is a representation of actual product

Dimensions

Rated Capacity	A	H	L	L1	L2	L3	L4	L5	I6	W	W1	T
kg/mm												
1-30	20.0	39.0	150.0	19.0	100.0	25.0	34.0	19.0	34.0	40.0	1.0	1/4-20 UNC
50-100	25.2	39.0	150.0	19.0	100.0	25.0	34.0	19.0	34.0	40.0	1.0	1/4-20 UNC

Order Information

Load Rating	Part #	Est. Weight	Price
1 kg	40680	2 lb	\$190.00
3 kg	40681	2 lb	\$190.00
5 kg	40682	2 lb	\$190.00
10 kg	40683	2 lb	\$190.00
15 kg	40684	2 lb	\$190.00
20 kg	40685	2 lb	\$190.00
30 kg	40686	2 lb	\$190.00
50 kg	40687	2 lb	\$190.00
75 kg	40688	2 lb	\$190.00
100 kg	40689	2 lb	\$190.00



SINGLE POINT
1040

Aluminum, Environmentally Sealed, NTEP Certified 1:5,000 Class III Single Cell, IP65



APPROVALS



Available upon request



Available upon request

Interchangeable Products

RICE LAKE WEIGHING SYSTEMS	
RL1040	page 197
METTLER TOLEDO®	
0785	—
CARDINAL®	
TSP	—

Specifications

- Full Scale Output:**
2.0 mV/V
- Output Resistance:**
350 (± 3) ohm
- Input Resistance:**
415 (± 15) ohms
- Material/Finish:**
Anodized aluminum
- Temperature:**
Compensated range
14°F to 104°F (-10°C to 40°C)
Operating range
0° F to 150° F (-18° C to 65° C)

Seal Type:
Environmentally sealed, IP65

Safe Overload:
200% at center loading point, full scale

Rated Excitation:
5-10 VDC (15 V maximum)

Combined Error:
0.02% full scale

Insulation Resistance:
2,000 megohms

Deflection at Capacity:
0.015 in

Cable Length:
10 ft

Cable Diameter:
0.200 in PVC jacket

Cable Color Code:
Green +Excitation
Black -Excitation
Red +Signal
White -Signal
Blue +Sense
Brown -Sense

Platform Size:
15.75 in × 15.75 in

Warranty:
One-year limited warranty

Approvals:
cFMus
NTEP
Ex (Available upon request)
OIML (Available upon request)

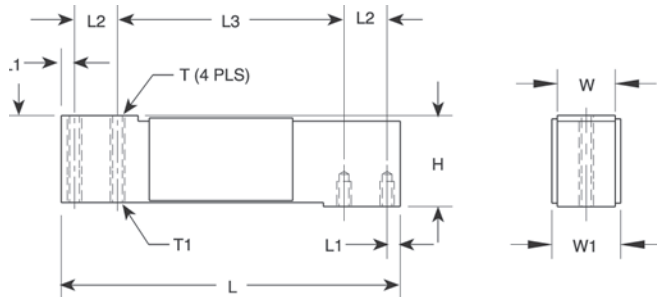
Dimensions

Picture is a representation of actual product

Rated Capacity	H	L	L1	L2	L3	T	T1	W	W1
kg/mm									
5-100	40.00	150.0	5.95	19.1	100.0	1/4-20 UNC × 10 DP	1/4-28 UNF × 10 DP	25.4	29.4

Order Information

Load Rating	Part #	Est. Weight	Price
NTEP Certified, Potted			
10 kg	33719	2 lb	\$207.00
15 kg	33720	2 lb	\$207.00
20 kg	33721	2 lb	\$207.00
30 kg	33722	2 lb	\$207.00
50 kg	33723	2 lb	\$207.00
100 kg	33724	2 lb	\$207.00
Non-NTEP Certified, Potted			
5 kg	17449	2 lb	\$200.00
7 kg	17483	2 lb	\$200.00
NTEP Certified, Unpotted			
5 kg	33725	2 lb	\$190.00
7 kg	33726	2 lb	\$200.00



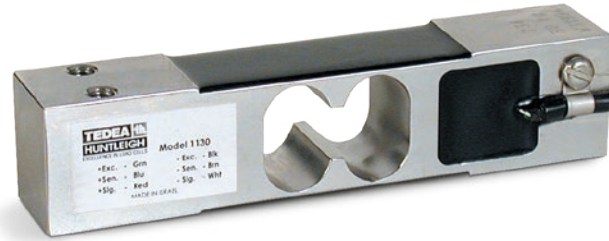
Interchangeable Products

AVERY WEIGH-TRONIX®
MK29.....

Specifications

- Full Scale Output:**
2.0 mV/V
- Output Resistance:**
350 (± 3) ohm
- Input Resistance:**
385 (± 15) ohm
- Material/Finish:**
Stainless steel
- Temperature:**
Compensated range
14°F to 104°F (-10°C to 40°C)
Operating range
0° F to 150° F (-18° C to 65° C)
- Seal Type:**
Environmentally sealed, IP66
- Safe Overload:**
200% full scale, at center loading point
- Rated Excitation:**
5-10 VDC (15 V maximum)
- Total Error:**
0.02% full scale
- Insulation Resistance:**
2,000 megohms
- Deflection at Capacity:**
7.5-100 kg=0.015 in
- Cable Length:**
1.5 m
3 m
25 ft
- Cable Diameter:**
0.200 PVC jacket
- Cable Color Code:**
Green +Excitation
Black -Excitation
Red +Signal
White -Signal
Blue +Sense
Brown -Sense
- Platform Size:**
15.75 in × 15.75 in
- Warranty:**
One-year limited warranty
- Approvals:**
cFMus
NTEP

APPROVALS



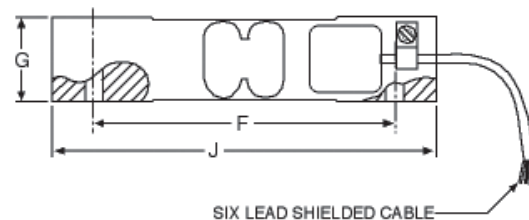
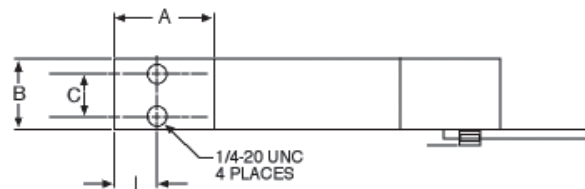
Dimensions

Picture is a representation of actual product

Rated Capacity	A	B	C	F	G	I	J
kg/mm							
7.5-100	35.0	25.0	15.0	106.0	30.0	14.5	135.0

Order Information

Load Rating	Part #	Est. Weight	Price
1.5 m Cable			
7.5 kg	53485	2 lb	\$270.00
10 kg	112374	2 lb	\$270.00
15 kg	53486	2 lb	\$270.00
30 kg	53487	2 lb	\$270.00
50 kg	53488	2 lb	\$270.00
100 kg	53490	2 lb	\$270.00
3 m Cable			
7.5 kg	111381	2 lb	\$280.00
10 kg	112365	2 lb	\$280.00
15 kg	114132	2 lb	\$280.00
30 kg	114133	2 lb	\$280.00
25 ft Cable Trimmed Outputs			
15 kg	124512	2 lb	\$315.00
30 kg	124513	2 lb	\$315.00



SINGLE POINT

1140

Stainless Steel, Environmentally Sealed, Potted IP67



APPROVALS



Interchangeable Products

RICE LAKE WEIGHING SYSTEMS
RL1140 page 198

Specifications

- Full Scale Output:**
2.0 mV/V
- Output Resistance:**
350 (± 3) ohm
- Input Resistance:**
385 (± 15) ohm
- Material/Finish:**
Stainless steel
- Temperature:**
Operating range
0° F to 150° F (-18° C to 65° C)

Seal Type:
Environmentally sealed, IP67

Safe Overload:
150% at center loading point, full scale

Cable Diameter:
0.200 PVC jacket

Rated Excitation:
5- 10 VDC (15 V maximum)

Combined Error:
0.02% full scale

Insulation Resistance:
2,000 megohms

Deflection at Capacity:
0.015 in

Cable Length:
10 ft

Cable Diameter:
0.200 in PVC jacket

Cable Color Code:
 Green +Excitation
 Black -Excitation
 Red +Signal
 White -Signal
 Blue +Sense
 Brown -Sense

Platform Size:
15.75 in × 15.75 in

Warranty:
One-year limited warranty

Approvals:
cFMus

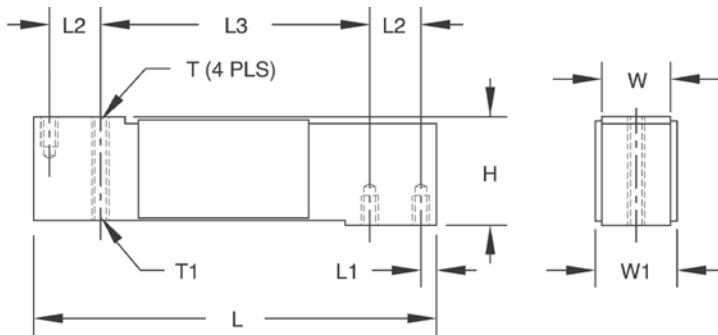
Dimensions

Picture is a representation of actual product

Rated Capacity	H	L	L1	L2	L3	T	T1	W	W1
kg/mm									
15-150	40.0	150.0	5.95	19.1	100.0	1/4-20 UNC × 10 DP	1/4-28 UNF × 10 DP	25.4	29.4

Order Information

Load Rating	Part #	Est. Weight	Price
15 kg	17451	3 lb	\$339.00
30 kg	17452	3 lb	\$339.00
50 kg	17468	3 lb	\$339.00
75 kg	17485	3 lb	\$339.00
100 kg	17453	3 lb	\$339.00
150 kg	36466	3 lb	\$339.00



Specifications

- Full Scale Output:**
2.0 mV/V
- Output Resistance:**
351 (± 5) ohm
- Input Resistance:**
380 (± 15) ohm
- Material/Finish:**
Stainless steel
- Temperature:**
Operating range
0° F to 150° F (-18° C to 65° C)
- Seal Type:**
Environmentally sealed, IP64
- Safe Overload:**
150% full scale
- Rated Excitation:**
5- 10 VDC (15 V maximum)
- Combined Error:**
0.02% full scale
- Insulation Resistance:**
2,000 ohm
- Deflection at Capacity:**
0.015 in
- Cable Length:**
10 ft
- Cable Diameter:**
0.200 in PVC jacket
- Cable Color Code:**
Green +Excitation
Black -Excitation
Red +Signal
White -Signal
Blue +Sense
Brown -Sense
- Platform Size:**
15.5 in × 15.5 in
- Warranty:**
One-year limited warranty
- Approvals:**
cFMus



APPROVALS



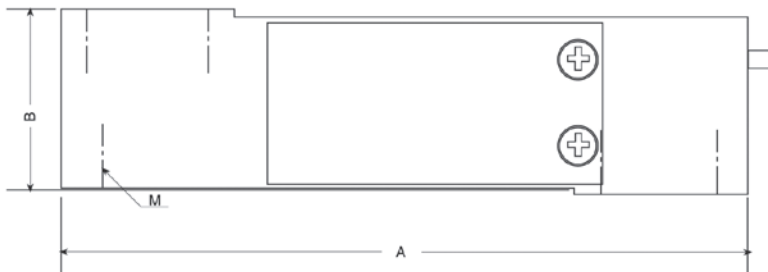
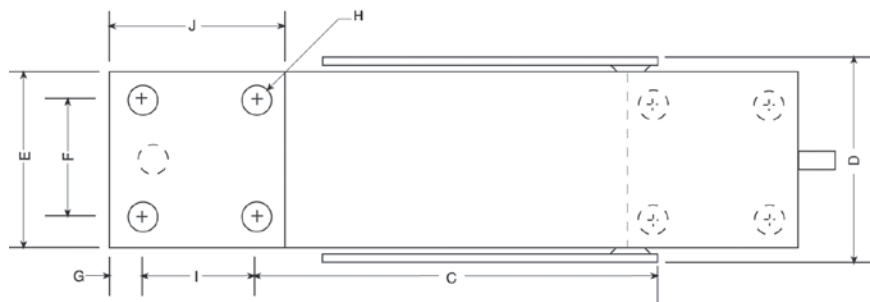
Dimensions

Picture is a representation of actual product

Rated Capacity	A	B	C	D	E	F	G	I	J	H	M
kg/mm											
200-250	150.1	39.9	86.6	43.4	38.1	25.4	6.35	25.4	38.1	1/4-20 UNC × 13 DP	1/4-28 UNF × 10 DP

Order Information

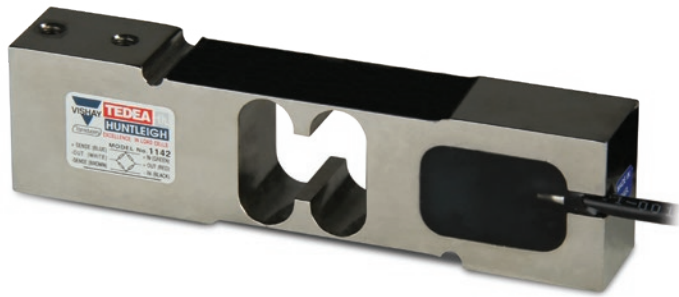
Load Rating	Part #	Est. Weight	Price
200 kg	47880	3 lb	\$371.00
250 kg	47881	3 lb	\$371.00



SINGLE POINT

1142

Stainless Steel, Environmentally Sealed, NTEP Certified 1:5,000 Class III Single Cell, IP66



APPROVALS



Available upon request

Dimensions

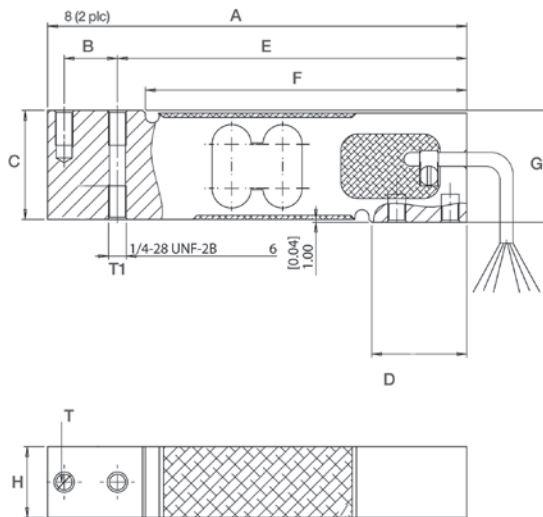
Picture is a representation of actual product

Rated Capacity	A	B	C	D	E	F	G	H	T	T1
kg/mm										
10-150	150.0	19.1	39.0	34.0	125.0	115.0	40.0	25.4	1/4-20 UNC	1/4-28 UNF

Order Information

Load Rating	Part #	Est. Weight	Price
10 kg	156361	3 lb	\$339.00
15 kg	156362	3 lb	\$339.00
20 kg	156363	3 lb	\$339.00
30 kg	156364	3 lb	\$339.00
50 kg	156365	3 lb	\$339.00
100 kg	156367	3 lb	\$339.00
150 kg	157809	3 lb	\$339.00

Metric threads available as an option



Interchangeable Products

RICE LAKE WEIGHING SYSTEMS
RLPWM15..... page 189

HBM®*
PW15..... page 265

*Color code is different

Specifications

Full Scale Output:
2.0 mV/V

Output Resistance:
351 (± 5.0) ohm

Input Resistance:
385 (± 10) ohm

Material/Finish:
Stainless steel

Temperature:
 Compensated range
 14°F to 104°F (-10°C to 40°C)
 Operating range
 0° F to 150° F (-18° C to 65° C)

Seal Type:
Environmentally sealed, IP66

Safe Overload:
150% full scale

Rated Excitation:
5- 10 VDC nominal (15 V maximum)

Combined Error:
0.02% full scale

Deflection at Capacity:
0.015 in

Insulation Resistance:
2,000 megohms

Cable Length:
10 ft

Cable Diameter:
0.200 in PVC Jacket

Platform Size:
16 in × 16 in

Cable Color Code:
 Green +Excitation
 Black -Excitation
 Red +Signal
 White -Signal
 Blue +Sense
 Brown -Sense

Warranty:
One-year limited warranty

Approvals:
 cFMus
 NTEP
 OIML (Available upon request)

Interchangeable Products

- RICE LAKE WEIGHING SYSTEMS
RL1260 page 201
- RICE LAKE WEIGHING SYSTEMS
RLPWM16..... page 195
- VPG® TEDEA-HUNTLEIGH
1260S..... page 356

Specifications

- Full Scale Output:**
2.0 mV/V
- Output Resistance:**
350 (± 3) ohm
- Input Resistance:**
415 (± 15) ohm
- Material/Finish:**
Anodized aluminum
- Temperature:**
Compensated range
14°F to 104°F (-10°C to 40°C)
Operating range
0° F to 150° F (-18° C to 65° C)
- Seal Type:**
Environmentally sealed, IP67
- Safe Overload:**
150% of full scale at center loading point
- Rated Excitation:**
5- 10 VDC (15 V maximum)
- Combined Error:**
0.02% full scale
- Insulation Resistance:**
2,000 megohms
- Cable Length:**
10 ft
- Cable Diameter:**
0.220 in polyurethane jacket
- Cable Color Code:**
Green +Excitation
Black -Excitation
Red +Signal
White -Signal
Blue +Sense
Brown -Sense
- Max Platform Size:**
24 in × 24 in
- Warranty:**
One-year limited warranty
- Approvals:**
cFMus
NTEP
Ex (Available upon request)
OIML (Available upon request)

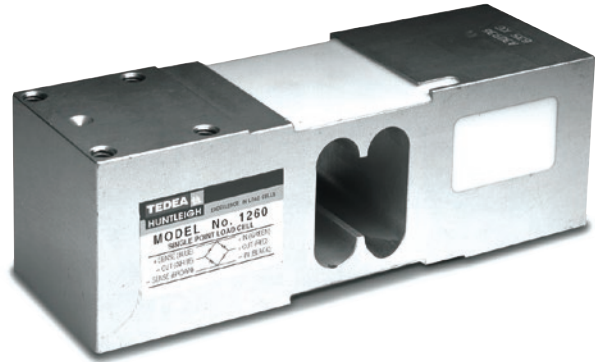
APPROVALS



Available upon request



Available upon request



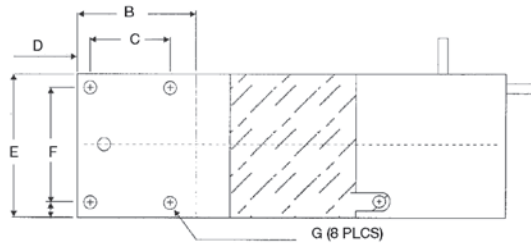
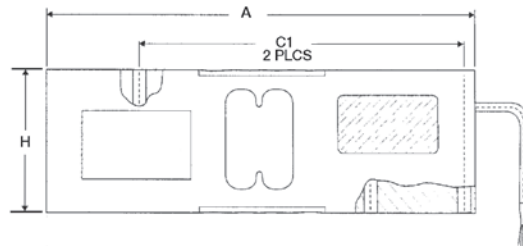
Dimensions

Picture is a representation of actual product

Rated Capacity	A	B	C	C1	D	E	F	G	H
kg/mm									
50-635	188.0	52.0	35.0	142.0	5.5	62.3	50.0	5/16-18 UNC	62.3

Order Information

Load Rating	Part #	Est. Weight	Price
50 kg	40769	5 lb	\$328.00
75 kg	40770	5 lb	\$328.00
100 kg	40771	5 lb	\$328.00
150 kg	159005	5 lb	\$328.00
200 kg	40772	5 lb	\$328.00
250 kg	40773	5 lb	\$328.00
300 kg	40774	5 lb	\$328.00
500 kg	40775	5 lb	\$328.00
635 kg	40776	5 lb	\$328.00



SINGLE POINT 1260S

Aluminum, Environmentally Sealed, NTEP Certified 1:10,000 Class III Single Cell, IP66



APPROVALS



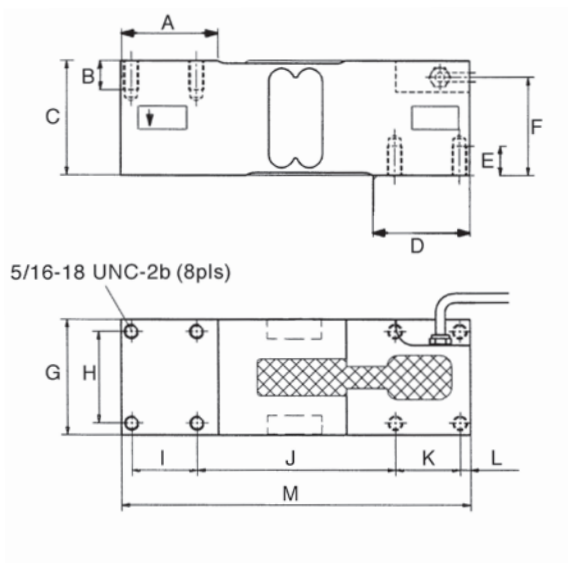
Dimensions

Picture is a representation of actual product

Rated Capacity	A	B	C	D	E	F	G	H	I	J	K	L	M
kg/mm													
75-635	52.0	16.0	62.3	52.0	16.0	52.3	63.0	50.0	35.0	107.0	35.0	5.5	188.0

Order Information

Load Rating	Part #	Est. Weight	Price
75 kg	76395	5 lb	\$344.00
100 kg	76396	5 lb	\$344.00
150 kg	76397	5 lb	\$344.00
200 kg	76398	5 lb	\$344.00
250 kg	76399	5 lb	\$344.00
300 kg	76400	5 lb	\$325.00
500 kg	76401	5 lb	\$344.00
635 kg	76402	5 lb	\$344.00



Interchangeable Products

RICE LAKE WEIGHING SYSTEMS	
RL1260	page 201
RICE LAKE WEIGHING SYSTEMS	
RL26018A	page 203
VPG® TEDEA-HUNTLEIGH	
1260	page 355

Specifications

Full Scale Output:

2.0 mV/V

Output Resistance:

350 (± 3) ohms

Input Resistance:

415 (± 15) ohms

Material/Finish:

Anodized aluminum

Temperature:

Compensated range

14°F to 104°F (-10°C to 40°C)

Operating range

0° F to 150° F (-18° C to 65° C)

Seal Type:

Environmentally sealed, IP66

Safe Overload:

150% of full scale at center loading point

Rated Excitation:

5- 10 VDC (15 V maximum)

Combined Error:

0.02% full scale

Insulation Resistance:

2,000 megohms

Cable Length:

10 ft

Cable Diameter:

0.220 in polyurethane jacket

Cable Color Code:

Green + Excitation

Black - Excitation

Red + Signal

White - Signal

Blue + Sense

Brown - Sense

Max Platform Size:

24 in × 24 in

Warranty:

One-year limited warranty

Approvals:

cFMus

NTEP

Interchangeable Products

TRANSCELL®
FAV.....

Specifications

- Full Scale Output:**
2 mv/V
- Output Resistance:**
350 (± 3) ohm
- Input Resistance:**
415 (± 15) ohm
- Material/Finish:**
Anodized aluminum
- Temperature:**
Operating range:
0° F to 150° F (-18° C to 65° C)
- Seal Type:**
Environmentally sealed, IP66
- Safe Overload:**
150% of rated output
- Rated Excitation:**
10 VAC (15 V max)
- Combined Error:**
0.02% full scale
- Insulation Resistance:**
2,000 megohms
- Cable Length:**
5 ft
- Cable Diameter:**
0.200 in PVC jacket
- Cable Color Code:**
Green + Excitation
Black - Excitation
Red + Signal
White - Signal
- Max Platform Size:**
24 in × 24 in
- Warranty:**
One-year limited warranty
- Approvals:**
OIML
Ex (Available upon request)

APPROVALS



Available upon request



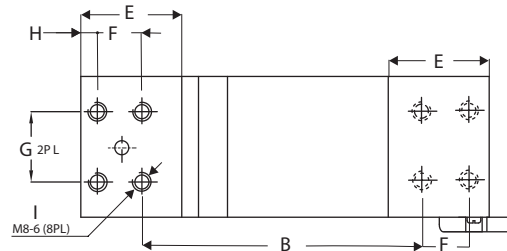
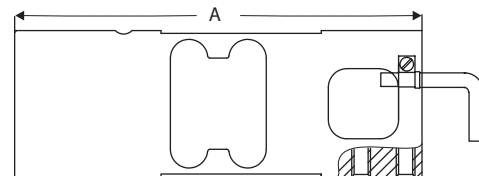
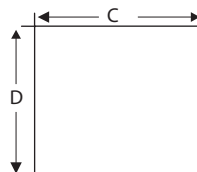
Dimensions

Picture is a representation of actual product

Rated Capacity	A	B	C	D	E	F	G	H	I
kg/mm									
50-635 kg	174.0	122.0	60.0	62.5	43.0	19.0	30.0	7.0	M8-6

Order Information

Load Rating	Part #	Est. Weight	Price
50 kg	157478	5 lb	\$290.00
100 kg	157479	5 lb	\$290.00
150 kg	157480	5 lb	\$290.00
200 kg	157481	5 lb	\$290.00
250 kg	157482	5 lb	\$290.00
300 kg	157483	5 lb	\$290.00
500 kg	157484	5 lb	\$290.00
635 kg	157485	5 lb	\$290.00





APPROVALS



Available upon request



Available upon request

Interchangeable Products

RICE LAKE WEIGHING SYSTEMS	
RL1250	page 204
RICE LAKE WEIGHING SYSTEMS	
RL1218A	page 205
FLINTEC®	
PCB*	page 251
TRANSCELL®	
FAY	—

*Stainless steel, hermetically sealed

Specifications

- Full Scale Output:**
2.0 mV/V
- Bridge Resistance:**
350 ohm, nominal
- Material/Finish:**
Anodized aluminum
- Temperature:**
Compensated range
14°F to 104°F (-10°C to 40°C)
Operating range
0° F to 150° F (-18° C to 65° C)
- Seal Type:**
Environmentally sealed, IP67
- Safe Overload:**
150% of full scale at center loading point
- Rated Excitation:**
5-10 VDC (15 V maximum)
- Combined Error:**
0.02% full scale
- Insulation Resistance:**
2,000 megohms
- Deflection at Capacity:**
0.015 in
- Cable Length:**
10 ft
25 ft
- Cable Diameter:**
0.200 in PVC jacket
- Cable Color Code:**
Green +Excitation
Black -Excitation
Red +Signal
White -Signal
Blue +Sense
Brown -Sense
- Max Platform size:**
50-500 kg= 800 mm × 800 mm
635-1,000 kg= 600 mm × 600 mm

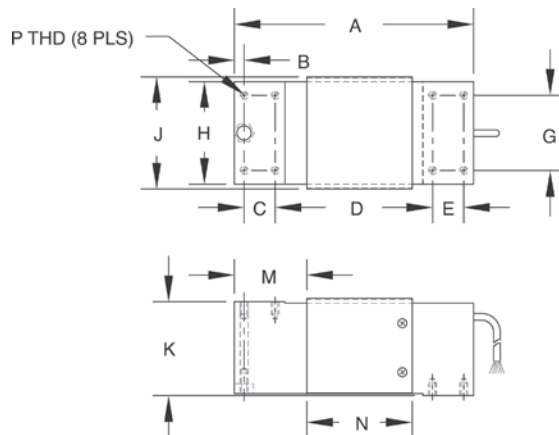
Dimensions

Picture is a representation of actual product

Rated Capacity	A	B	C	D	E	G	H	J	K	M	N	P
kg/mm												
50-1,000	191.0	11.0	25.0	125.0	25.0	60.0	75.0	82.0	75.0	57.5	85.0	5/16-18 UNC × 15 DP

Order Information

Load Rating	Part #	Est. Weight	Price
NTEP Certified, 10 ft Cable			
50 kg	17478	6 lb	\$365.00
75 kg	17469	6 lb	\$365.00
100 kg	33711	6 lb	\$365.00
150 kg	33712	6 lb	\$365.00
200 kg	33713	6 lb	\$365.00
250 kg	33714	6 lb	\$365.00
300 kg	33715	6 lb	\$365.00
500 kg	33716	6 lb	\$365.00
635 kg	33717	6 lb	\$365.00
1,000 kg	17480	6 lb	\$365.00
Non-NTEP Certified, 25 ft Cable			
50 kg	40944	6 lb	\$365.00
75 kg	40945	6 lb	\$365.00
100 kg	40946	6 lb	\$365.00
150 kg	32342	6 lb	\$365.00
200 kg	32341	6 lb	\$365.00
250 kg	40947	6 lb	\$365.00
300 kg	32340	6 lb	\$365.00



- Warranty:**
One-year limited warranty
- Approvals:**
cFMus
NTEP
Ex (Available upon request)
OIML (Available upon request)

Aluminum, Environmentally Sealed, NTEP Certified 1:3,000, Class III Single Cell, IP66

Specifications

- Full Scale Output:**
2.0 mV/V
- Output Resistance:**
350 (± 3) ohm
- Input Resistance:**
415 (± 15) ohm
- Material/Finish:**
Aluminum alloy
- Temperature:**
Compensated range
14°F to 104°F (-10°C to 40°C)
Operating range
0° F to 150° F (-18° C to 65° C)
- Seal Type:**
Environmentally sealed, IP66
- Safe Overload:**
150% full scale
- Rated Excitation:**
5-10 VDC (15 V maximum)
- Combined Error:**
0.02% full scale
- Insulation Resistance:**
2,000 megohms
- Deflection at Capacity:**
0.015 in
- Max. Platform Size:**
4 ft × 4 ft
- Cable Length:**
5 m
- Cable Diameter:**
0.220 in polyurethane jacket
- Cable Color Code:**
Green +Excitation
Black -Excitation
Red +Signal
White -Signal
Blue +Sense
Brown -Sense
- Warranty:**
One-year limited warranty
- Approvals:**
cFMus
NTEP
Ex (Available upon request)
OIML (Available upon request)

APPROVALS



Available upon request



Available upon request



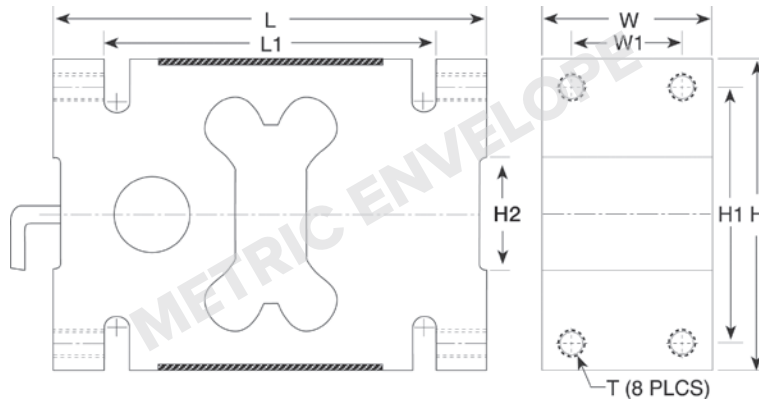
Dimensions

Picture is a representation of actual product

Rated Capacity	H	H1	H2	L	L1	T	W	W1
kg/mm								
1,000-2,000	126.0	95.0	45.0	176.0	135.0	M16 × 2-6H	76.0	46.0

Order Information

Load Rating	Part #	Est. Weight	Price
1,000 kg	29908	9 lb	\$556.00
1,500 kg	29909	9 lb	\$556.00
2,000 kg	29910	9 lb	\$556.00



SINGLE POINT

1510

Stainless Steel, Welded Seal, NTEP Certified 1:5,000, OIML C3, IP68

VPG TEDEA-HUNTLEIGH



APPROVALS



Specifications

- Full Scale Output:**
2.0 mV/V
- Output Resistance:**
350 (± 3) ohm
- Input Resistance:**
380 (± 10) ohm
- Material/Finish:**
Stainless steel
- Temperature:**
Compensated range
14°F to 104°F (-10°C to 40°C)
Operating range
0° F to 150° F (-18° C to 65° C)

- Seal Type:**
Welded-seal, IP68
- Safe Overload:**
150% at center loading point, full scale

- Rated Excitation:**
5-10 VDC (15 V maximum)

- Combined Error:**
0.020% full scale

- Insulation Resistance:**
2,000 megohms

- Cable Length:**
10 ft
- Cable Diameter:**
0.220 in polyurethane jacket

- Cable Color Code:**
Green +Excitation
Black -Excitation
Red +Signal
White -Signal
Blue +Sense
Brown -Sense

- Platform Size:**
23.62 in × 23.62 in

- Warranty:**
One-year limited warranty

- Approvals:**
cFMus
OIML
NTEP

Dimensions

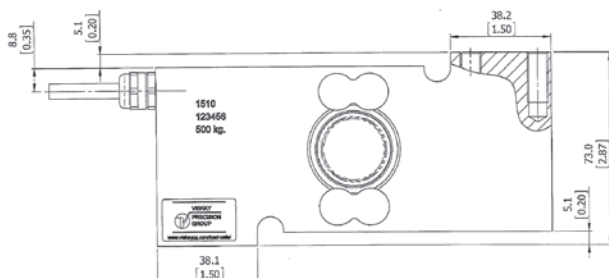
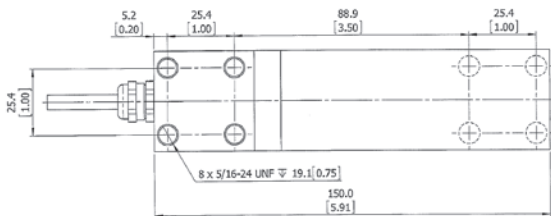
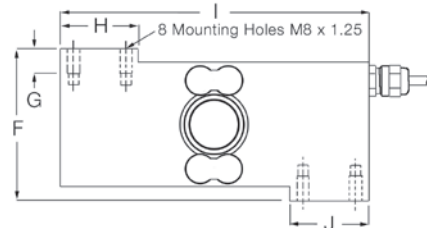
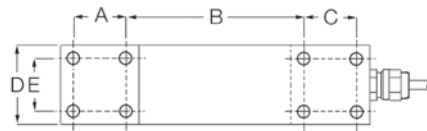
Picture is a representation of actual product

Rated Capacity	A	B	C	D	E	F	G	H	I	J
kg/mm										
100-500	25.4	86.3	25.4	38.1	25.4	72.8	11.9	38.1	149.9	38.1

Order Information

Load Rating	Part #	Est. Weight	Price
OIML			
100 kg	65851	6 lb	\$842.00
250 kg	65852	6 lb	\$842.00
500 kg	65853	6 lb	\$842.00
NTEP Certified			
500 kg*	167585	6 lb	\$842.00

*Used in Rice Lake monorail scale



Tedeia 1510 PN 167585 to be used with Rice Lake Monorail Scale

www.ricelake.com | Phone: 800-472-6703



360

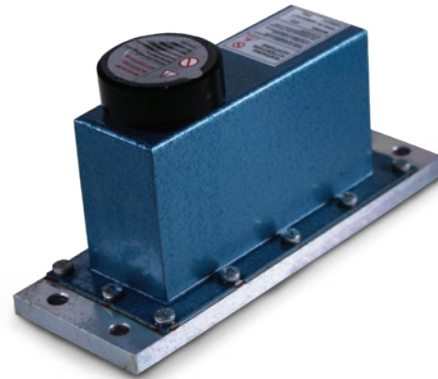
Fluid Damped Alloy Steel/Stainless, Environmentally Sealed, NTEP Certified 1:5,000 Class III Single Cell, IP66

Interchangeable Products

RICE LAKE WEIGHING SYSTEMS

RL260FD* page 202

*3000d NTEP, 16.4 ft Cable



APPROVALS



Available upon request

Specifications

Full Scale Output:
2.0 mV/V

Output Resistance:
350 (± 3) ohm

Input Resistance:
415 (± 15) ohm

Material/Finish:
Anodized aluminum in alloy steel or stainless steel

Temperature:
Compensated range
14°F to 104°F (-10°C to 40°C)
Operating range
0° F to 150° F (-18° C to 65° C)

Seal Type:
Environmentally sealed, IP66

Safe Overload:
150% at center loading point, full scale

Rated Excitation:
5-10 VDC (15 V maximum)

Combined Error:
0.025% full scale

Insulation Resistance:
2,000 megohms

Cable Length:
10 ft

Cable Diameter:
0.370 in PVC jacket

Cable Color Code:
Green +Excitation
Black -Excitation
Red +Signal
White -Signal
Blue +Sense
Brown -Sense

Warranty:
One-year limited warranty

Approvals:
NTEP
OIML (Available upon request)

Dimensions

Picture is a representation of actual product

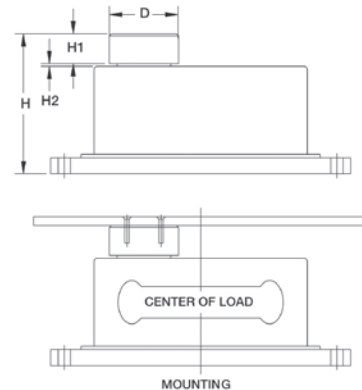
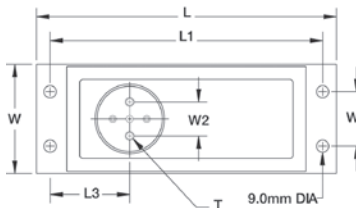
Rated Capacity	D	H	H1	H2	L	L1	L3	T	W	W1	W2
kg/mm											
2-50	50 dia	115.0	21.0	2.0	220.0	200.0	58.5	1/4-20 UNC × 10 DP	80.0	40.0	25.0

Order Information

Load Rating	Part #	Est. Weight	Price
Stainless Steel			
2 kg*	17567	8 lb	\$875.00
5 kg	17568	8 lb	\$875.00
7 kg	17569	8 lb	\$875.00
10 kg	17570	8 lb	\$875.00
15 kg	17571	8 lb	\$875.00
20 kg	17572	8 lb	\$875.00
30 kg	17573	8 lb	\$875.00
50 kg	17574	8 lb	\$875.00
Alloy Steel			
2 kg*	17559	8 lb	\$768.00
5 kg	17560	8 lb	\$768.00
7 kg	17561	8 lb	\$768.00
10 kg	17562	8 lb	\$768.00
15 kg	17563	8 lb	\$768.00
20 kg	17564	8 lb	\$768.00
30 kg	17565	8 lb	\$768.00
50 kg	17566	8 lb	\$768.00

*Non-NTEP Certified

Note: The special fluid damped operation is particularly well-suited for applications where quick weighment is required, e.g., checkweighers





APPROVALS



Specifications

- Full Scale Output:**
2.0 mV/V
- Output Resistance:**
350 (± 5) ohm
- Input Resistance:**
415 (± 15) ohm
- Material/Finish:**
Aluminum
- Temperature:**
Operating range
0° F to 150° F (-18° C to 65° C)
- Seal Type:**
Environmentally sealed, IP65

- Safe Overload:**
800% full scale downward
400% full scale upward

- Rated Excitation:**
15 VDC (15 V maximum)

- Combined Error:**
0.03% full scale

- Insulation Resistance:**
5,000 megohms

- Cable Length:**
3 ft

- Cable Diameter:**
0.370 in PVC jacket

- Cable Color Code:**
Green +Excitation
Black -Excitation
Red +Signal
White -Signal
Blue +Sense
Brown -Sense

- Warranty:**
One-year limited warranty

- Approvals:**
cFMus

Dimensions

Picture is a representation of actual product

Rated Capacity	D	H	H1	H3	L	L1	L2	L3	T	W	W2
kg/mm											
3-50	19.1	115.2	97.3	10.0	199.5	46.0	71.5	119.8	1/4-20 UNC x 20 DP	92.0	82.0

Order Information

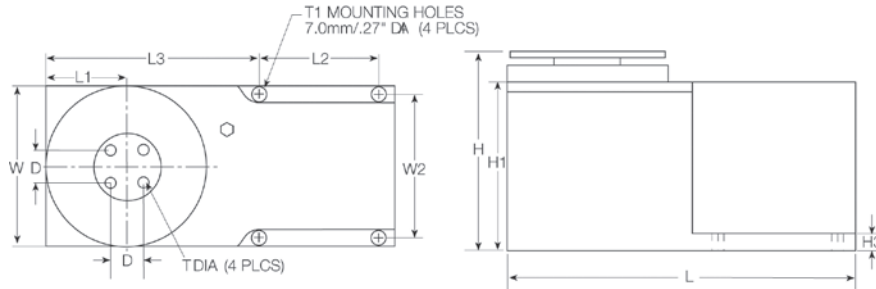
Load Rating	Part #	Est. Weight	Price
3 kg	Consult	7 lb	\$950.00
5 kg	Consult	7 lb	\$950.00
7 kg	Consult	7 lb	\$950.00
10 kg	Consult	7 lb	\$950.00
15 kg	Consult	7 lb	\$950.00
20 kg	Consult	7 lb	\$950.00
30 kg	Consult	7 lb	\$950.00
50 kg	Consult	7 lb	\$950.00

Note: The special fluid damped operation is particularly well-suited for applications where quick weighment is required, e.g., checkweighers

9010 load cells are custom-manufactured per specific application requirements; use the

Application Definition Form on the last page of this section as well as online at www.ricelake.com/questionnaires to define your applications

Available in stainless steel with breather vent option for washdown applications



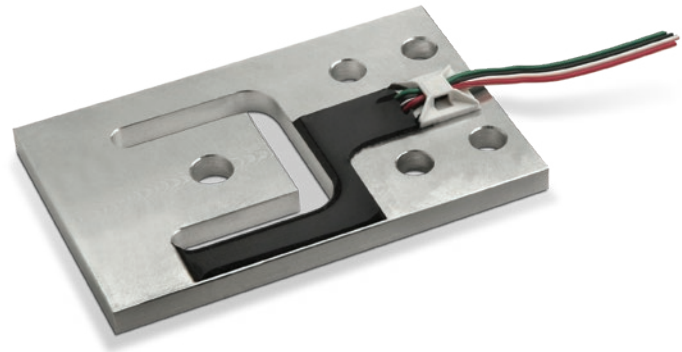
Specifications

- Full Scale Output:**
1.0 mV/V
- Output Resistance:**
1,000 (±10) ohm
- Input Resistance:**
1,160 (± 15) ohm
- Material/Finish:**
Aluminum
- Temperature:**
Compensated range
14°F to 104°F (-10°C to 40°C)
Operating range
0° F to 150° F (-18° C to 65° C)
- Seal Type:**
Environmentally sealed, IP65
- Safe Overload:**
150% full scale
- Rated Excitation:**
5-10 VDC
- Insulation Resistance:**
5,000 megohms
- Cable Length:**
1.5 m flat ribbon type, PVC
- Cable Color Code:**
Green +Excitation
Black -Excitation
Red +Signal
White -Signal
- Warranty:**
One-year limited warranty
- Approvals:**
NTEP
OIML (available upon request)

APPROVALS



Available upon request



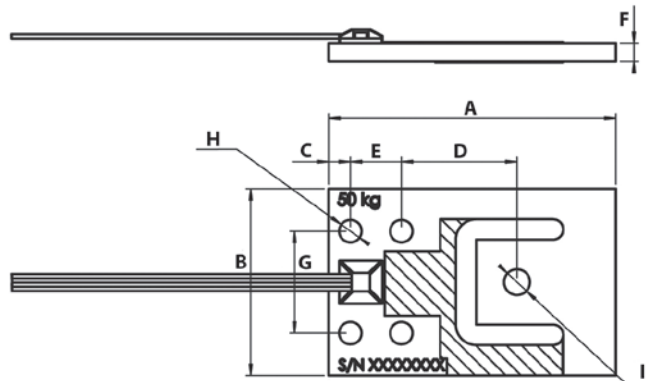
Picture is a representation of actual product

Dimensions

Rated Capacity	A	B	C	D	E	F	G	H	I
kg/mm									
7.5	70.0	39.0	4.9	28.0	14.0	2.5	27.8	5.1	5.1
15.0	70.0	39.0	4.9	28.0	14.0	4.1	27.8	5.1	5.1
37.5	76.2	44.5	6.0	29.3	15.0	4.8	30.0	6.6	6.2
50.0	84.5	55.0	6.4	34.0	15.0	5.3	30.0	6.6	7.6
75.0	84.5	55.0	6.4	34.0	15.0	6.4	30.0	6.6	7.6
150.0	107.5	70.0	7.8	45.9	22.8	8.0	44.5	8.1	8.2

Order Information

Load Rating	Part #	Est. Weight	Price
7.5 kg	112921	1lb	\$80.00
15 kg	186687	1lb	\$85.00
37.5 kg	112922	1lb	\$85.00
50 kg	112923	1lb	\$90.00
75 kg	112924	1lb	\$90.00
150 kg	112925	1lb	\$106.00





APPROVALS



Interchangeable Products

AVERY WEIGH-TRONIX®
220..... —

Weigh Module Available

RICE LAKE WEIGHING SYSTEMS
220..... page 56

Specifications

Full Scale Output:
2.0 mV/V

Output Resistance:
1,025 (± 20) ohm

Input Resistance:
1,065 (± 60) ohm

Material/Finish:
Stainless steel

Temperature:
Compensated range
14° to 104°F (-10°C to 40°C)
Operating range
0° F to 150° F (-18° C to 65° C)

Seal Type:
Hermetically sealed, IP68

Safe Overload:
150% at center loading point, full scale

Rated Excitation:
5-10 VDC (15 V maximum)

Combined Error:
0.020% full scale

Insulation Resistance:
2,000 megohms

Deflection at Capacity:
< 0.5 mm at full scale

Cable Length:
5,000 kg=5 m
10,000-20,000 kg=10 m
30,000 kg=20 m

Cable Diameter:
0.220 in polyurethane jacket

Cable Color Code:
Blue +Excitation
Black -Excitation
White +Signal
Red -Signal
Green +Sense
Gray -Sense

Warranty:
One-year limited warranty

Approvals:
cFMus
OIML
NTEP

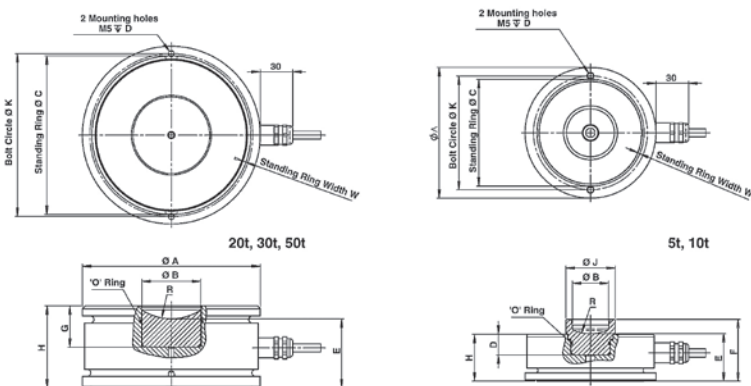
Dimensions

Picture is a representation of actual product

Rated Capacity	A	B	C	D	E	H
kg/mm						
5,000	80.0	19.0	70.0	20.0	33.4	30.0
10,000	92.0	28.0	80.0	14.6	33.4	33.0
20,000-30,000	110.0	29.0	101.5	26.3	39.0	50.0

Order Information

Load Rating	Part #	Est. Weight	Price
5,000 kg	65854	3 lb	\$1,266.00
10,000 kg	65855	5 lb	\$1,372.00
20,000 kg	65856	8 lb	\$1,372.00
30,000 kg	65857	8 lb	\$1,372.00



Specifications

- Full Scale Output:**
1.5 mV/V
- Output Resistance:**
605 (± 5) ohm
- Input Resistance:**
670 (± 15) ohm
- Material/Finish:**
Stainless steel
- Temperature:**
Operating range
-0° F to 150° F (-18° C to 65° C)
- Seal Type:**
Environmentally sealed, IP68
- Safe Overload:**
150% full scale
- Rated Excitation:**
5-10 VDC
- Combined Error:**
0.02% of applied load
- Insulation Resistance:**
2,000 megohms
- Cable Length:**
15 m
- Cable Color Code:**
Green +Excitation
Black -Excitation
Red +Signal
White -Signal
Blue +Sense
Brown -Sense
- Warranty:**
One-year limited warranty



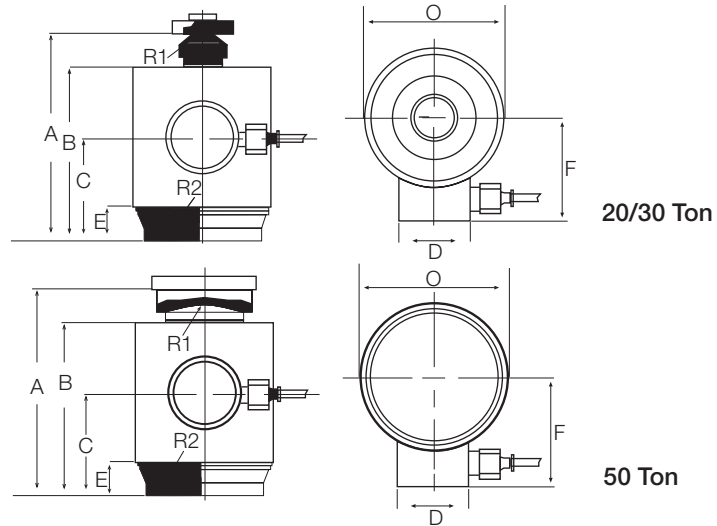
Dimensions

Picture is a representation of actual product

Rated Capacity	A	B	C	D	E	F	O	R1	R2
kg/mm									
20,000	138.3	112.3	72.3	50.0	32.3	69.0	88.0	15.0	150.0
30,000	138.3	112.3	72.3	50.0	32.3	69.0	88.0	15.0	150.0
50,000	155.5	115.8	74.0	50.0	32.3	69.0	88.0	35.0	300.0

Order Information

Load Rating	Part #	Est. Weight	Price
20,000 kg	169233	10 lb	\$662.00
30,000 kg	169234	10 lb	\$662.00
50,000 kg	169235	13 lb	\$662.00



Load cups not included

VPG Tedea-Huntleigh Model 9010 Application Definition Form

Customer's Name: _____ Number of Units: _____

Contact Person: _____ Date: _____

Application: _____

Tare Weight (Dead Load), kg: _____

Useful Weight (Live Load), kg: _____

If Checkweigher:

Size of conveyor platform (cm x cm): Length (movement direction) _____ Width _____

Size of weighed product in movement direction (cm): _____

Speed of belt (cm/sec): _____

Tare weight distribution: Conveyor (kg) _____

Motor (kg) _____

Position of motor (see sketch, cm): D _____ F _____

If not checkweigher (see sketch):

Estimated tare C.G. position (cm): D _____ F _____

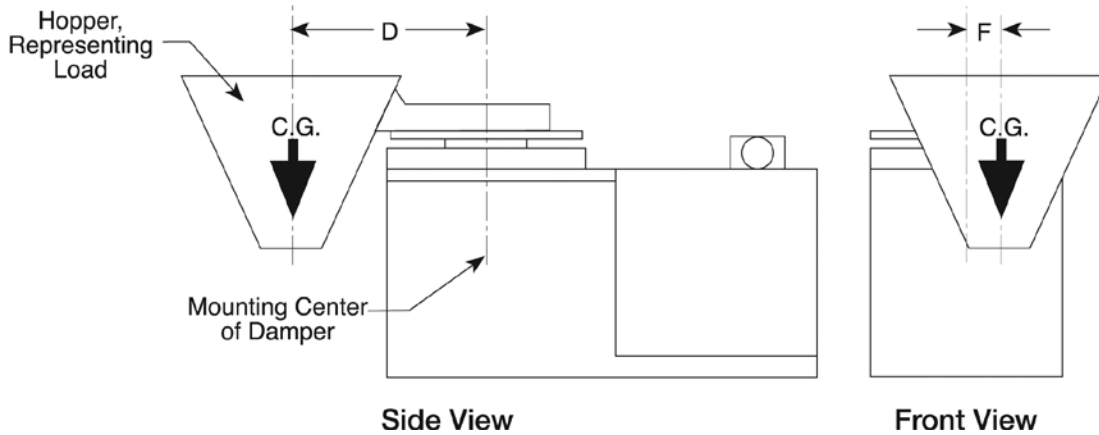
Loading position (cm): D _____ F _____ Drop height (cm) _____

If C.G. of load varies, max. distance between extreme position (cm): _____

Describe live load (powder, fruit, screws, etc.): _____

Settling time (milliseconds): _____

Accuracy required: _____ Operating temperature range (°C): _____



Return completed form to your Sales Representative.

For factory use; do not write in space below.

Serial Numbers: _____ Sales Order #: _____

Delivery Quoted: _____ Date: _____