

# Pipe Lever Scale Questionnaire

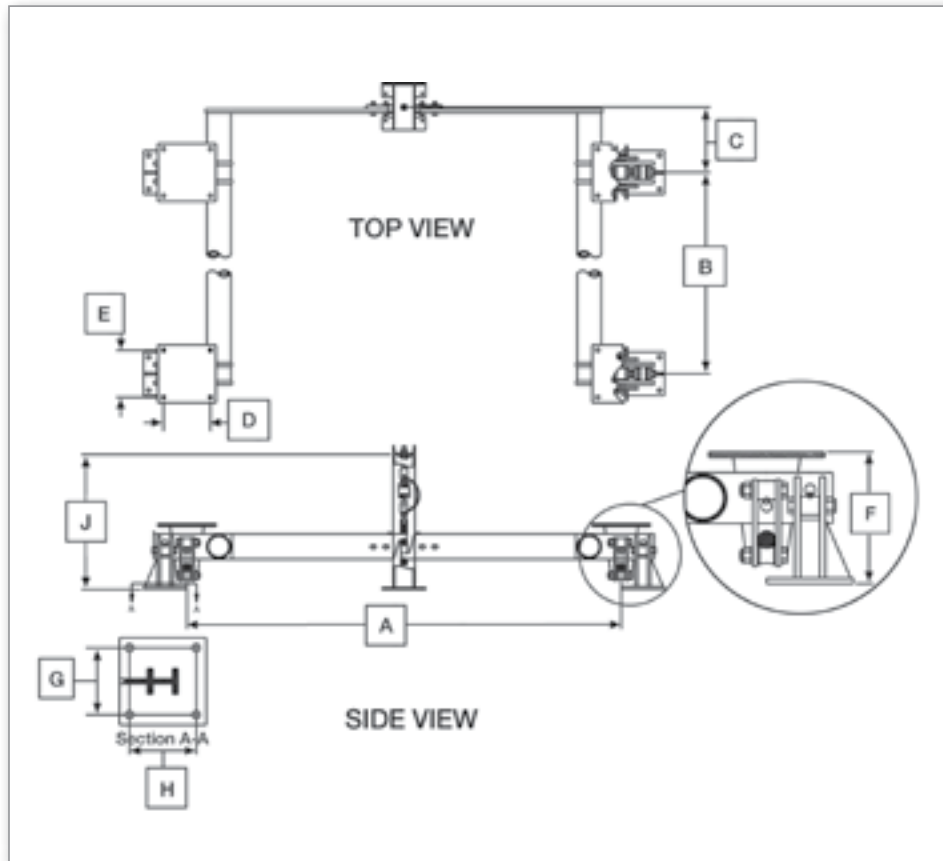
Customer Number:

Company:

Name:  Date:

Phone:  Fax:  Email:

## Instructions or subhead of outcome or expectations



*These drawings are not to be used as installation guidelines*

**A**

**B**

**C**

**D** \*

**E** \*

**F**

**G** \*\*

**H** \*\*

**J**

\*Chair hole dimensions. \*\*Stand hole dimensions

### Capacity:

5K      10K      25K      30K  
40K      50K      60K

### Material:

Stainless Steel      Mild Steel

### NTEP Required:

Yes      No

### Finish:

### Load Cell:

Mild Steel      Stainless Steel  
Hermetically Sealed

### Load Cell Model:

	5K/10K Total Load*		25K Total Load*		30K Total Load*		40K/60K Total Load*	
	Standard	Minimum	Standard	Minimum	Standard	Minimum	Standard	Minimum
<b>A</b>	—	48.00 in	—	48.00 in	—	60.00 in	—	60.00 in
<b>B</b>	—	48.00 in	—	48.00 in	—	60.00 in	—	60.00 in
<b>C</b>	12.25 in	4.50 in	15.50 in	7.00 in	15.62 in	7.00 in	18.00 in	7.00 in
<b>D</b>	6.00 in	6.00 in	9.50 in	8.75 in	9.50 in	8.75 in	13.00 in	12.00 in
<b>E</b>	6.00 in	6.00 in	9.50 in	8.75 in	9.50 in	8.75 in	13.00 in	12.00 in
<b>F</b>	8.62 in	8.62 in	13.56 in	13.56 in	13.81 in	13.81 in	18.18 in	18.18 in
<b>G</b>	4.50 in	3.50 in	6.50 in	4.75 in	6.50 in	4.75 in	9.25 in	6.50 in
<b>H</b>	4.50 in	3.50 in	6.50 in	4.75 in	6.50 in	4.75 in	9.25 in	6.50 in
<b>J</b>	24.00 in	24.00 in	32.25 in	32.25 in	32.25 in	32.25 in	37.25 in	37.25 in
<i>A × B must be equal to or less than 64 square feet. If over, consult factory.</i>								
<i>A × B must be equal to or less than 100 square feet. If over, consult factory.</i>								
<i>A × B must be equal to or less than 100 square feet. If over, consult factory.</i>								
<i>A × B must be equal to or less than 100 square feet. If over, consult factory.</i>								

\* Live and dead load