



Picture is a representation of actual product

Approvals

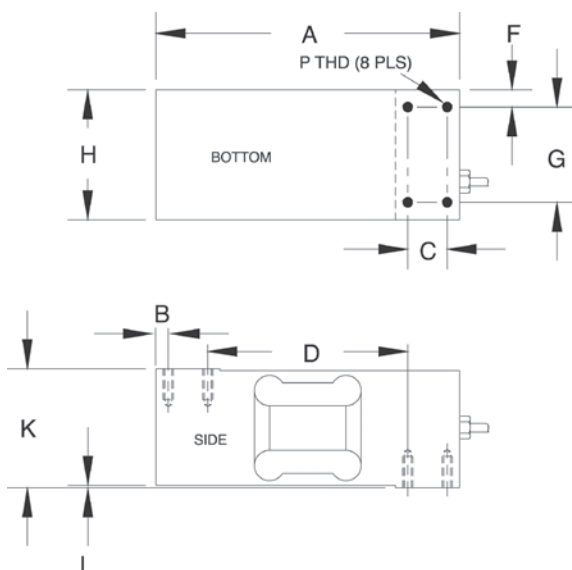


Order Information

Load Rating	Part #	Est. Weight	Price
NTEP Certified			
250 lb	17582	6 lb	Consult
300 lb	112689	6 lb	Consult
500 lb	17583	6 lb	Consult
750 lb	17584	6 lb	Consult
1,000 lb	17585	6 lb	Consult
2,000 lb	17586	6 lb	Consult
Non-NTEP Certified			
100 lb	36479	6 lb	Consult
150 lb	112688	6 lb	Consult

Dimensions

Rated Capacity	A	B	C	D	F	G	H	K	L	P
lb/in										
100 to 2,000	7.50	0.31	0.98	4.92	0.30	2.36	2.95	2.95	0.06	5/16-18-UNC x 0.75 DP



Specifications

Full Scale Output:

2.0 mV/V

Output Resistance:

349 to 355 ohm

Input Resistance:

400 nominal ohm

Material/Finish:

Aluminum, clear anodized

Temperature:

Compensated:

14 °F to 104 °F (-10 °C to 40 °C)

Operating:

0 °F to 150 °F (-18 °C to 65 °C)

Seal Type:

Environmentally sealed, IP67

Safe Overload:

150% full scale

Safe Sideload:

100% full scale

Rated Excitation:

5 to 10 V DC (15 V maximum)

Combined Error:

0.02% full scale

Insulation Resistance:

5,000 megohm

Deflection at Capacity:

100 to 250 lb: 0.010 in

500 to 2,000 lb: 0.006 in

Cable Length:

10 ft

Cable Diameter:

0.200 in

Polyurethane jacket

Cable Color Code:

Red +Excitation

Black -Excitation

Green +Signal

White -Signal

Max Platform Size:

30 x 30 in

Warranty:

One-year limited

Approvals:

NTEP

cFMus