

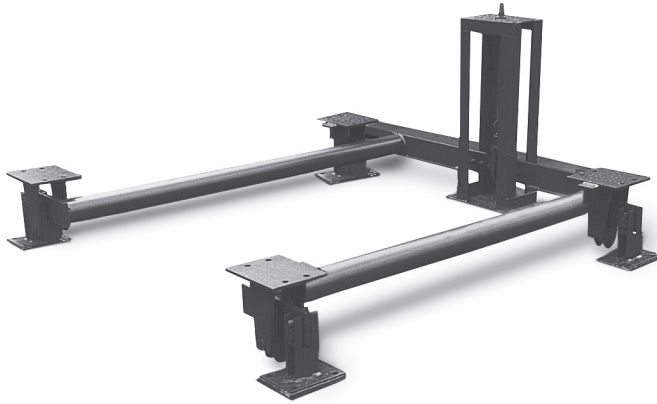
Pipe Lever Scales

TABLE OF CONTENTS

Pipe Lever Scale.....	842
Pipe Lever Scale Questionnaire	843

Product names, logos, brands and other trademarks featured or referred to within this publication are the property of their respective trademark holders.

Pipe Lever Scale



Approvals



Measurement
Canada
Approved



Part Number/Price

Part #	Dimensions	Est. Weight	Price
25,000 lb			
29587	62 5/8 × 62 5/8 in	532 lb	\$4,700.00
29586	60 1/2 × 66 in	528 lb	\$4,700.00
29588	66 1/2 × 91 in	640 lb	\$4,700.00
29589	64 × 64 in	538 lb	\$4,700.00
35008	62 × 92 in	561 lb	\$4,700.00
35009	62 × 105 in	720 lb	\$4,700.00
40409	72 × 72 in	618 lb	\$4,700.00
83433	64 3/4 × 64 3/4 in	567 lb	\$4,700.00
25,000 lb Stainless Steel			
46264	62 5/8 × 62 5/8 in	405 lb	\$10,400.00
46265	60 1/2 × 66 in	550 lb	\$10,400.00
46266	66 1/2 × 91 in	610 lb	\$10,400.00
50172	64 × 64 in	550 lb	\$10,400.00
50173	62 × 92 in	680 lb	\$10,400.00
50174	62 × 105 in	720 lb	\$10,400.00
40,000 lb			
39152	5 × 5 ft	1,885 lb	\$11,800.00
39153	6 × 6 ft	1,975 lb	\$11,800.00
39154	7 × 7 ft	2,220 lb	\$11,800.00
39155	8 × 8 ft	2,310 lb	\$11,800.00
39156	9 × 9 ft	2,545 lb	\$11,800.00
39157	10 × 10 ft	2,635 lb	\$11,800.00
50,000 lb			
39158	5 × 5 ft	2,010 lb	\$12,100.00
39159	6 × 6 ft	2,120 lb	\$12,100.00
39160	7 × 7 ft	2,385 lb	\$12,100.00
39161	8 × 8 ft	2,495 lb	\$12,100.00
39162	9 × 9 ft	2,750 lb	\$12,100.00
39163	10 × 10 ft	2,860 lb	\$12,100.00

Standard Features

- NTEP Certified and Measurement Canada Approved models available
- RL20000 alloy steel load cell standard (prices include load cell and ITCM load cell assembly)
- Mild steel construction, black paint finish
- Stainless steel, hermetically sealed load cells available
- Custom sizes and capacities available from 5,000 to 60,000 lb

Specifications

End Load Capacity:

100% full scale

mV/V Output:

1.50 to 1.87 mV/V nominal

Cable Length:

20 ft (6.1 m)

Warranty:

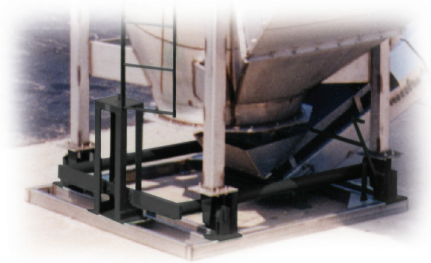
One-year limited

Approvals:

NTEP CC 94-126

Class III/IIII

Measurement Canada Approved, AM-5114,
Legal For Trade on sizes greater than 1.6 m,
or a capacity greater than 10,000 kg



Custom sizes fit your tank/hopper system for fewer modifications and less installation time.

Pipe Lever Scale Questionnaire



Company _____

Name _____ Date _____

Phone _____ Fax _____ Email _____

	5K/10K Total Load*		25K Total Load*		30K Total Load*		40K/60K Total Load*	
	Standard	Minimum	Standard	Minimum	Standard	Minimum	Standard	Minimum
A	—	48.00 in	—	48.00 in	—	60.00 in	—	60.00 in
B	—	48.00 in	—	48.00 in	—	60.00 in	—	60.00 in
C	12.25 in	4.50 in	15.50 in	7.00 in	15.62 in	7.00 in	18.00 in	7.00 in
D	6.00 in	6.00 in	9.50 in	8.75 in	9.50 in	8.75 in	13.00 in	12.00 in
E	6.00 in	6.00 in	9.50 in	8.75 in	9.50 in	8.75 in	13.00 in	12.00 in
F	8.62 in	8.62 in	13.56 in	13.56 in	13.81 in	13.81 in	18.18 in	18.18 in
G	4.50 in	3.50 in	6.50 in	4.75 in	6.50 in	4.75 in	9.25 in	6.50 in
H	4.50 in	3.50 in	6.50 in	4.75 in	6.50 in	4.75 in	9.25 in	6.50 in
J	24.00 in	24.00 in	32.25 in	32.25 in	32.25 in	32.25 in	37.25 in	37.25 in

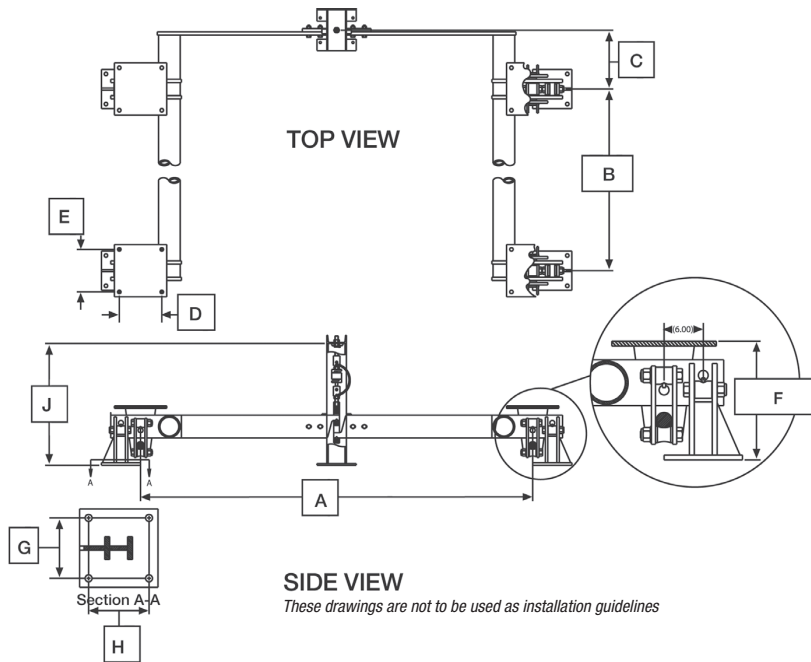
A x B must be equal to or less than 64 square feet. If, over consult factory.

* Live and dead load

A x B must be equal to or less than 100 square feet. If, over consult factory.

A x B must be equal to or less than 100 square feet. If, over consult factory.

A x B must be equal to or less than 100 square feet. If, over consult factory.



A	
B	
C	
D+	
E+	
F	
G**	
H**	
J	

** Stand hole dimensions +Chair hole dimensions.

Capacity: 5K 10K 25K 30K 40K 50K 60K

Material: Stainless Steel Mild Steel

NTEP Required: Yes No

Finish: _____

Load Cell: Mild Steel Stainless Steel Hermetically Sealed
 Model _____ Model _____

Form #0652 New 08/2021

