

Version 2 CPU Board Installation Instructions

Use the following procedure to install Version 2 CPU boards in IQ plus 510/710 indicators:

1. Disconnect indicator from power source.
2. Place indicator face-down on an antistatic work mat. Remove screws that hold the backplate to the enclosure body.

Warning *Disconnect power before removing indicator backplate.*

3. Loosen all in-use cord grips then lift the backplate away from the enclosure and set it aside.

Caution *Use a wrist strap to ground yourself and protect components from electrostatic discharge (ESD) when working inside the indicator enclosure.*

4. For units using the Version 1 CPU board with the cable interface board, remove the four screws that secure the interface board to its mounting brackets.
5. Unplug connectors J1 (load cell cable), J4 and J12 (serial communications), J7 and J8 (digital I/O), J6 (keypad ribbon cable), and JP4 (setup switch). If an analog output board is installed, disconnect the analog output cable. See Figure 2 on page 2 for connector locations.
6. Remove the standoff and three nuts from the corners of the CPU board.
7. Cut the cable tie that holds the line filter load wires to the enclosure.
8. Lift the board off of its spacers just far enough to access the setscrews that secure the line filter load wires at connector P2. Use a small screwdriver to loosen the setscrews and disconnect power to the board.
9. Remove the old CPU board from the enclosure.
10. Prior to Version 2, four nylon spacers provided support under the CPU board. The Version 2 board uses a brass spacer and star washers to ensure proper board grounding.

Before installing the new board, remove the nylon spacer from the corner adjacent to connectors J1 and J4 and replace it with the star washers and brass spacer as shown in Figure 2 on page 2.

11. Install the new board, reinstall the standoff and retaining nuts to secure the board on the mounting studs. Replug connectors and replace line filter cable tie.
12. Position backplate over the enclosure and reinstall the backplate screws. Use the torque pattern shown in Figure 1 to prevent distorting the backplate gasket. Torque backplate screws to 10 in-lb (1.13 N-m).
13. Ensure no excess cable is left inside the enclosure and tighten cord grips.
14. Reconnect power to the indicator.
15. Recalibrate and reconfigure as described in the *Installation Manual* for your indicator.

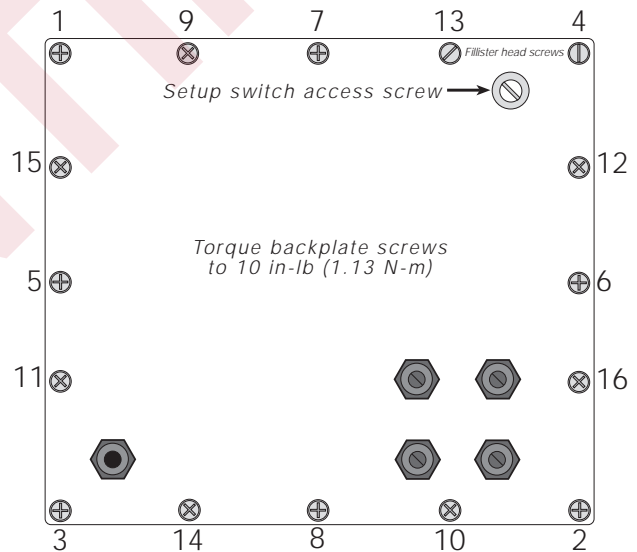


Figure 1. Torque Pattern for Backplate Screws

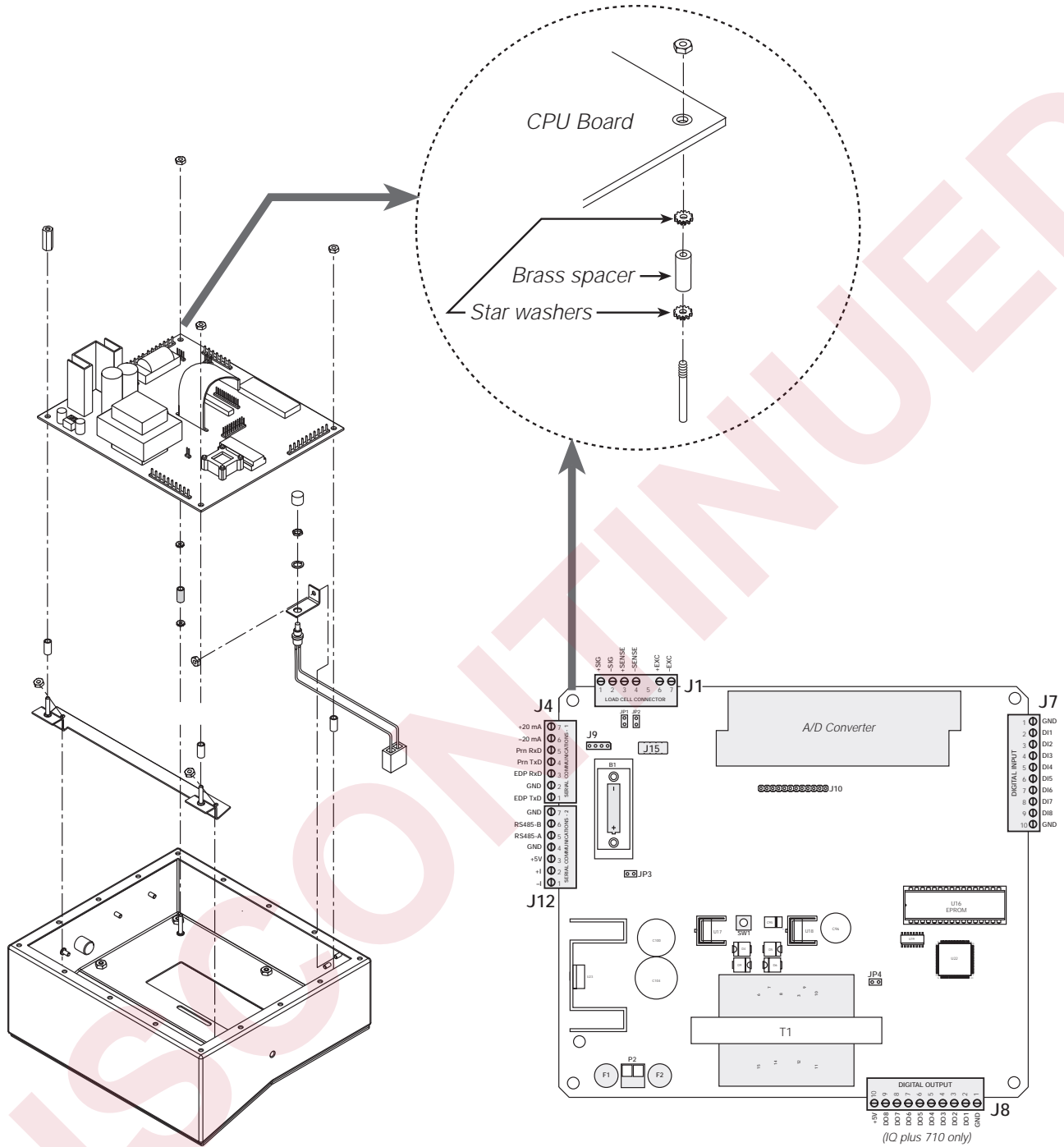


Figure 2. Installation of Brass Spacer and Star Washers for Version 2 IQ plus 510/710 CPU and Power Supply Board