

MAS-LC

ANIMAL SCALE



LEGAL
FOR TRADE



RICE LAKE®
WEIGHING SYSTEMS

800-472-6703
www.ricelake.com

MAS-LC

ANIMAL SCALE

Multi-Animal Scale System

The MAS-LC is a load cell based weighing system that provides reliable and accurate weights for ranchers and processors. Designed with animal and operator safety in mind, the MAS-LC has 48-inch tall, 11-gauge steel kick panels on the side walls and both gates. The gates have spring loaded latches and are field configurable, giving operators the choice of opening from the left or right, making sorting livestock easier and safer in any environment. Load cell cables are run through conduit to protect from possible damage. Add a choice of digital weigh centers, printers or remote displays for an easy-to-use system that will provide years of trusted performance.

Stationary Load Cell Scale

This scale combines the accuracy of a fully electronic weighing system with steel I-beam weighbridge designs typically found in heavy capacity vehicle scales. Three-inch thick wall tubing for the sectional uprights with two-inch thick horizontal wall tubing connecting the uprights provides a sturdy construction.

Legal for Trade

Accurate, Legal for Trade weighments are essential to protect profits when selling livestock onsite. Like all MAS series scales, the MAS-LC is certified in the United States and approved in Canada for Legal for Trade use.

Flooring

The MAS-LC offers unmatched traction for animals in wet and slippery conditions with either X-Lug flooring with a deep, aggressive tread or X-Plank flooring with a less-aggressive, wheel-accessible tread. Both styles are made from durable, recycled plastic and rubber material that will never rot or harbor bacteria and moisture like wood flooring.



Heavy-duty latch assembly

SIZES AVAILABLE

25,000 Pound Capacity from 13 × 8 feet to 22 × 10 feet

- Custom sizes available
- 13 × 8 ft
- 15 × 8 ft
- 17 × 8 ft
- 19 × 8 ft
- 22 × 8 ft
- 22 × 10 ft

OPTIONAL

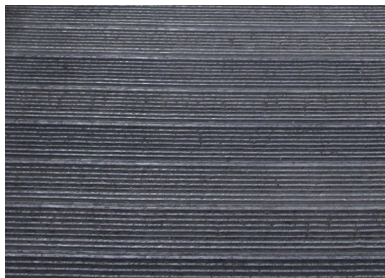
- Ticket printer
- Tape printer
- 920i® weigh center
- 920i AC or DC stand alone indicator
- Light duty enclosure
- Pedestal

APPROVALS



Measurement
Canada
Approved

X-Plank flooring



X-Lug flooring



SALES AND TECHNICAL ASSISTANCE

CORPORATE HEADQUARTERS: Rice Lake, Wisconsin, U.S.
USA: (800) 472-6703 | Direct: (715) 234-9172 | Fax: (715) 234-6967

Canada and Mexico: 1-800-321-6403 | Europe: +39 0536 843418 | International Direct: +1-715-234-9171

RICE LAKE
WEIGHING SYSTEMS
www.ricelake.com