

RL2200SS Series

Stainless Steel, Weigh Module Kit



Picture is a representation of actual product.

Order Information

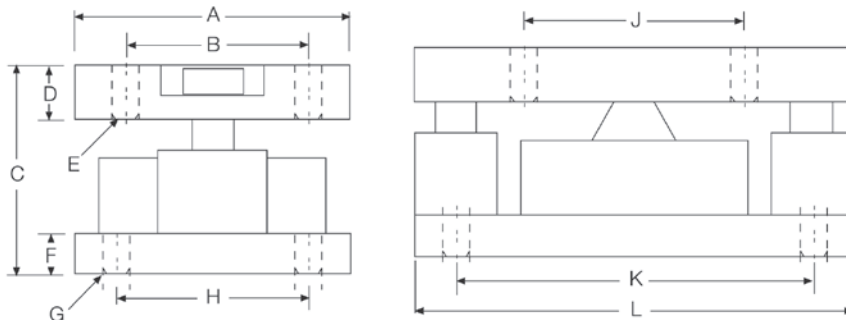
Load Rating (Per Module)	Part #	Price
Single Module		
2,500 lb	76657	Consult
5,000 lb	45845	Consult
10,000 lb	45844	Consult
25,000 lb	45843	Consult
50,000 lb	45842	Consult
3-Module Kit		
2,500 lb	76899	Consult
5,000 lb	46478	Consult
10,000 lb	46479	Consult
25,000 lb	46480	Consult
50,000 lb	46481	Consult
4-Module Kit		
2,500 lb	76900	Consult
5,000 lb	46482	Consult
10,000 lb	46483	Consult
25,000 lb	46484	Consult
50,000 lb	46485	Consult

Replacement Load Cell Order Information

Load Rating (Per Module)	Part #	Price
2,500 lb	76655	Consult
5,000 lb	45712	Consult
10,000 lb	45713	Consult
25,000 lb	45714	Consult
50,000 lb	45715	Consult

Dimensions

Rated Capacity	A	B	C	D	E	F	G	H	J	K	L
lb/in											
2,500 to 10,000	5.00	3.50	4.00	1.00	0.52	1.00	0.52	3.50	4.00	6.50	8.00
25,000 to 50,000	6.00	4.50	5.00	1.25	0.78	1.00	0.78	4.50	5.00	7.75	10.00



Complete Kit Includes

- Three or four RL2200 stainless steel mounting assemblies with RL2200SS stainless steel, hermetically sealed, compression disk load cells
- One JB4SS NEMA Type 4X stainless steel signal trim junction box
- 25 ft of hostile environment EL147HE SURVIVOR® load cell cable

Applications

- Medium- to heavy-capacity tank, hopper or vessel weighing
- Belt or roller conveyors
- Scale platforms and screw feeders

Specifications

Full Scale Output:

4.0 mV/V
2.0 mV/V (2,500 lb)

Bridge Resistance:

350 ohm nominal

Material/Finish:

Stainless steel

Temperature:

Compensated:
15 °F to 115 °F (9 °C to 46 °C)

Seal Type:

Hermetically sealed, IP66/68

Safe Overload:

150% full scale

Rated Excitation:

5 to 10 VDC (20 V maximum)

Nonlinearity:

0.05% full scale

Hysteresis:

0.03% full scale

Insulation Resistance:

5,000 megohm

Cable Length:

30 ft

Cable Color Code:

Red +Excitation
Black -Excitation
White +Signal
Green -Signal

Warranty:

Two-year limited