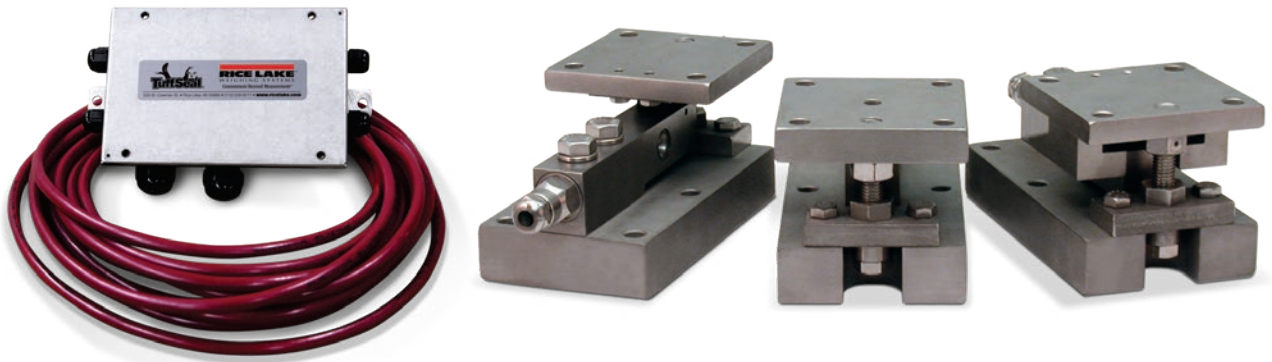


Survivor Weigh Modules

TABLE OF CONTENTS

SURVIVOR® PARAMOUNTS® HE	32
<i>Medium-capacity Weigh Module Systems</i>	
RL1700 HE	34
<i>Light- to Medium-capacity Weigh Modules</i>	
RL1600 HE	36
<i>Medium-capacity Weigh Modules</i>	
RL1855 HE-HS	38
<i>Medium-capacity Weigh Modules with Hermetically Sealed Load Cells</i>	
RL2100 HE	40
<i>Heavy-capacity Weigh Modules</i>	

Product names, logos, brands, and other trademarks featured or referred to within this publication are the property of their respective trademark holders.



Picture is a representation of actual product.

Consisting of three different weigh module designs, the Paramounts system offers superior accuracy, even in applications with extreme expansion, contraction and vibration. The fixed-pin module acts as the vessel's primary reference point, enabling rotation. A single side-stop module is then paired with the fixed-pin module to permit mechanical expansion and contraction in one direction. The vessel then becomes a high-accuracy weighing system with the addition of one to six free-sliding modules. This system offers the free motion necessary to eliminate unwanted mechanical side loads, as well as the strength needed to keep the vessel in check. This gives the Paramounts system its industry-leading reputation for exceptional accuracy in unfriendly environments. Integral jacking/shipping bolts enhance safety by preventing accidental lift-off, facilitating quick field removal of load cells and eliminating load cell damage during transportation. Matched outputs and field-replaceable cable simplify installation and enhance serviceability. The Paramounts system represents the ultimate combination of convenience, accuracy and control.

Complete Kit Includes:

- One JB4SS NEMA Type 4X stainless steel signal trim junction box
- One fixed-pin module, one side-stop module, and one or two free-sliding assemblies. Each module is complete with a FLINTEC SB4 or SB10 (520 lb) stainless steel hermetically sealed load cell.
- 25 ft of hostile environment EL147HE SURVIVOR® load cell cable

Standard Features:

- Capacities (per module): (2.3 kN-100 kN)
- All stainless steel construction
- Bolt-in-place design; module bolts directly to tank leg without requiring additional load buttons or mounting plates
- Hermetically sealed, stainless steel load cells
- Load cell outputs are matched to $\pm 0.07\%$, minimizing maintenance costs
- Unique design allows for thermal expansion/contraction
- Low-profile, self-checking design
- Jacking screw allows empty vessel to be lifted clear of load cell for maintenance
- Unique patented blind load hole technology minimizes unwanted side and eccentric loading
- Vessel is free to slide laterally on PTFE-coated surfaces
- Two-year limited warranty

Applications

- Medium-capacity, blenders and tanks
- Batching/blending
- Pharmaceutical processing
- Food processing
- Petroleum refining and batching

Load Cell Certifications



Except 520lb

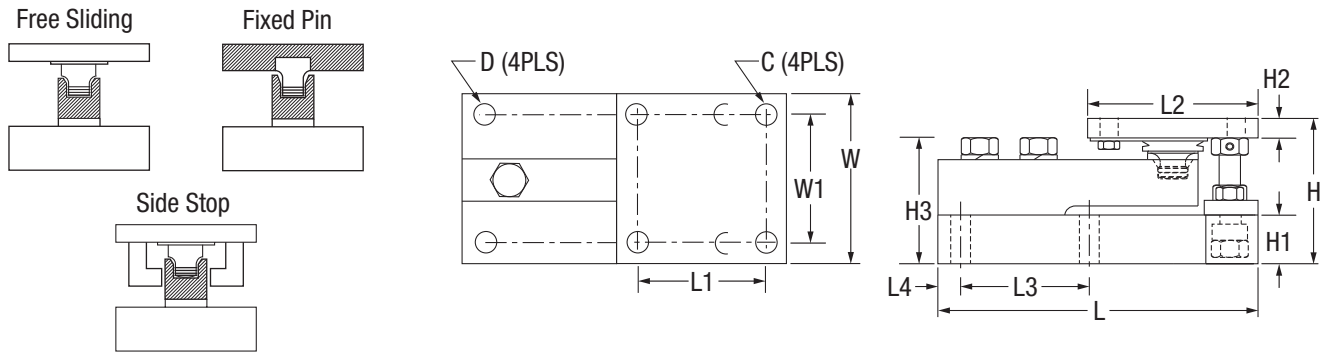


IP66/69K



SURVIVOR® Paramounts® HE

Medium-capacity Weigh Module Systems



Dimensions

Rated Capacity	C	D	H	H1	*H2	**H2	H3	L	L1	L2	L3	L4	W	W1
kN/in														
2.3 kN	0.38	0.44	3.49	1.00	0.50	0.75	2.98	7.51	3.00	4.00	3.00	0.50	4.00	3.00
5-23 kN	0.44	0.44	3.58	1.25	0.50	0.75	3.06	7.51	3.00	4.00	3.00	0.50	4.00	3.00
50 kN	0.56	0.56	4.66	1.50	0.62	1.00	4.09	9.19	3.87	5.00	3.87	0.56	5.00	3.87
100 kN	0.69	0.69	6.41	2.00	0.75	1.25	5.73	11.46	4.75	6.00	4.75	0.69	6.00	4.75

*Side stop and free sliding units **Fixed pin units

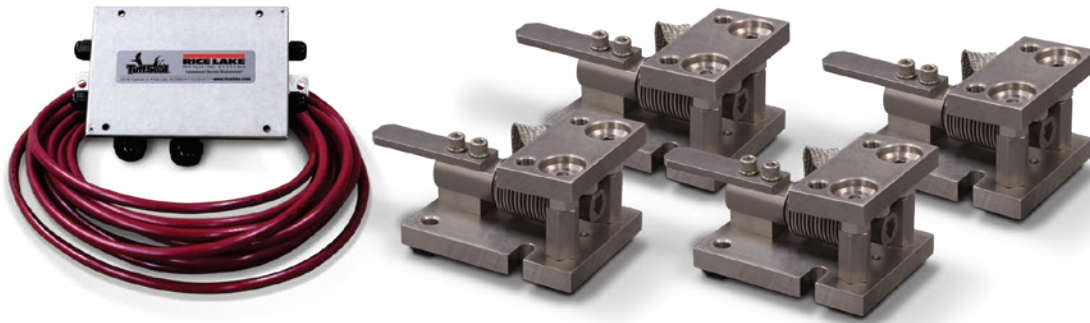
Order Information

Load Rating (Per Module)	Part #	Price
NTEP Certified/OIML C3 3-Module Kit		
5 kN	29883	\$4,125.00
10 kN	29884	\$4,125.00
23 kN	29885	\$4,125.00
50 kN	29886	\$5,580.00
NTEP Certified/OIML C3 4-Module Kit		
5 kN	29879	\$5,482.00
10 kN	29880	\$5,482.00
23 kN	29881	\$5,482.00
50 kN	29882	\$7,038.00
Non-NTEP Certified 3-Module Kit		
2.3 kN	38207	\$4,680.00
5 kN	17991	\$4,012.00
10 kN	17992	\$4,012.00
23 kN	17993	\$4,012.00
50 kN	17994	\$5,205.00
100 kN	17995	\$5,952.00
Non-NTEP Certified 4-Module Kit		
2.3 kN	38208	\$5,925.00
5 kN	17998	\$5,225.00
10 kN	17999	\$5,225.00
23 kN	18000	\$5,225.00
50 kN	18001	\$6,566.00
100 kN	18002	\$8,284.00
*Conduit adapter, 1/2-14 NPT	17703	\$50.00

*Must be factory installed

SURVIVOR WEIGH MODULES RL1700 HE

Light- to Medium-capacity Weigh Modules



Picture is a representation of actual product.

The RL1700 HE offers precision-machined, weldless construction to maximize washdown cleaning effectiveness. This design, coupled with integral jacking/shipping bolts, eases installation and minimizes maintenance costs. OIML C3 certified load cells in capacities from 5 kg to 5,000 kg provide accurate, consistent weighments. Ideal for multi-ingredient micro-batching applications, the RL1700 HE provides exceptional performance in hostile environments. The RL1700 HE offers a guaranteed waterproof rating to ensure reliable performance in moisture-laden environments.

Complete Kit Includes:

- One JB4SS NEMA Type 4X stainless steel signal-trim junction box
- Three or four RL1700 HE stainless steel compression mounts
- Three or four RL9018SS (5-250 kg) or RLHTO (500-5,000 kg) stainless steel, hermetically sealed single-ended beam load cells
- 25 ft of hostile environment EL147HE SURVIVOR® load cell cable

Standard Features:

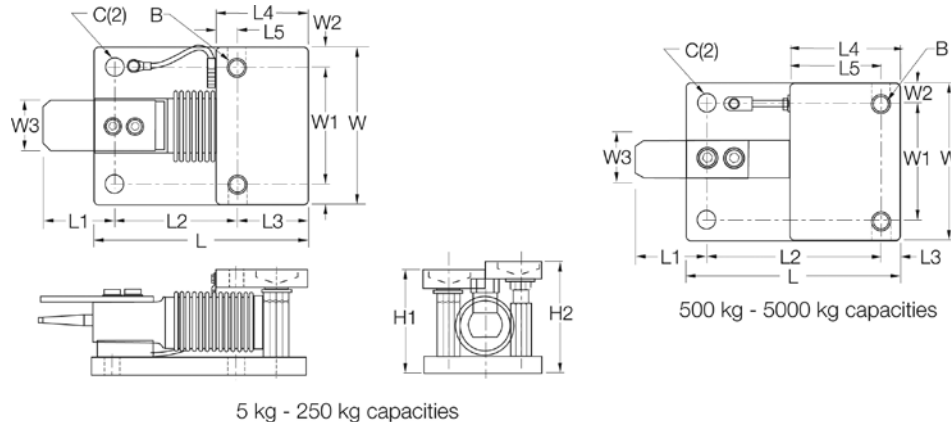
- All stainless steel construction
- Hermetically sealed, stainless steel load cells, IP66/68, guaranteed waterproof
- OIML certified load cells from 5 -5,000 kg
- Bolt-in-place design; module bolts directly to tank leg without requiring additional load buttons or mounting plates
- Self-checking with lift-off/tip-over protection and jacking/shipping bolts
- Load cell is isolated from overload in all directions
- Weldless construction retains less residue and allows fast, thorough cleaning
- Two-year limited warranty

Applications

- Multi-ingredient micro-batching
- Meat and poultry processing
- Batching/blending
- Dye/ink blending

Load Cell Certifications





Dimensions

Rated Capacity	C	B	*H1	**H2	L	L1	L2	L3	L4	L5	W	W1	W2	W3
kg/mm														
5-250	12.9	1/2-20 UNF	80.0	86.1	131.8	63.7	76.0	42.0	56.0	14.0	96.0	70.0	12.9	25.4
500-2,000	12.9	5/8-18 UNF	101.6	109.4	165.0	70.0	129.5	14.9	80.0	59.9	110.0	70.0	20.0	31.7
5,000	20.0	3/4-10 UNC	135.0	143.0	215.0	81.0	161.0	20.0	90.0	70.5	150.0	90.0	30.0	40.0

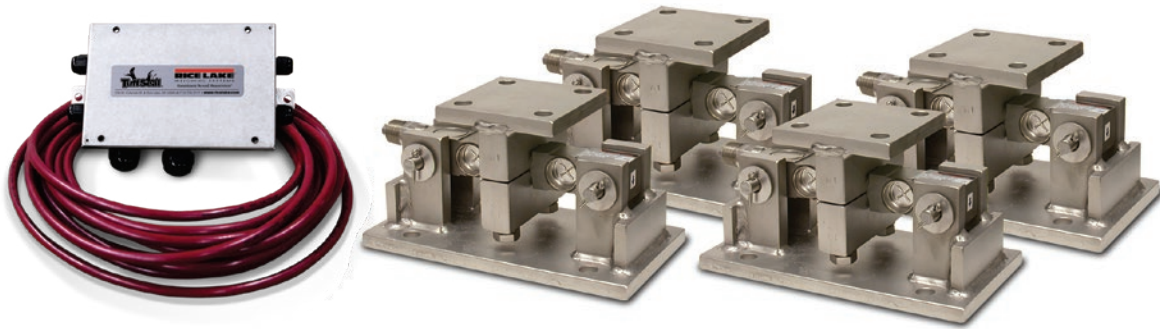
* In weighing position ** In jacked-up position for load cell shipping or removal

Order Information

Load Rating (Per Module)	Part #	Price
Single Module (Includes Load Cell)		
5 kg	32687	\$975.00
10 kg	32688	\$975.00
20 kg	32689	\$975.00
50 kg	32690	\$975.00
100 kg	32691	\$975.00
200 kg	32692	\$975.00
250 kg	32693	\$975.00
500 kg	32974	\$1,187.00
1,000 kg	32973	\$1,187.00
2,000 kg	32972	\$1,187.00
5,000 kg	32971	\$1,463.00
3-Module Kit		
5 kg	32920	\$3,143.00
10 kg	32921	\$3,143.00
20 kg	32922	\$3,143.00
50 kg	32923	\$3,143.00
100 kg	32924	\$3,143.00
200 kg	32925	\$3,143.00
250 kg	32926	\$3,143.00
500 kg	32980	\$3,763.00
1,000 kg	32981	\$3,763.00
2,000 kg	32982	\$3,763.00
5,000 kg	32983	\$4,690.00
4-Module Kit		
5 kg	32927	\$4,150.00
10 kg	32928	\$4,150.00
20 kg	32929	\$4,150.00
50 kg	32930	\$4,150.00
100 kg	32931	\$4,150.00
200 kg	32932	\$4,150.00
250 kg	32933	\$4,150.00
500 kg	32984	\$4,955.00
1,000 kg	32985	\$4,955.00
2,000 kg	32986	\$4,955.00
5,000 kg	32987	\$5,856.00

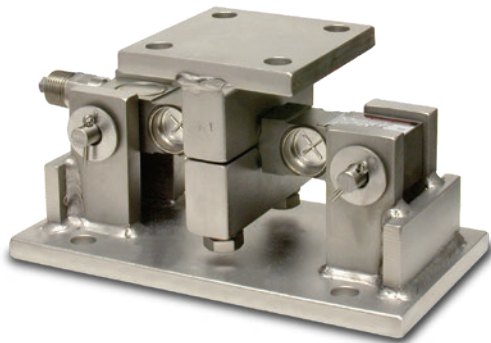
RL1600 HE

Medium-capacity Weigh Modules



Picture is a representation of actual product.

The RL1600 HE mounting module kit utilizes several Rice Lake Weighing Systems components to provide an unmatched level of performance in tank and hopper weighing applications. The RL1600 HE kit is ideally suited for indoor and outdoor process control operations in the medium-capacity ranges. Each module incorporates self-checking capabilities for thermal expansion and contraction.



Fabricated stainless steel module with RL75016WHE double-ended beam load cell.

Complete Kit Includes:

- One JB4SS NEMA Type 4X stainless steel signal trim junction box
- Three or four RL1600 HE stainless steel compression mounts
- Three or four RL75016 WHE stainless steel, hermetically sealed double-ended shear beam load cells
- 25 ft of hostile environment EL147HE SURVIVOR® load cell cable

Standard Features:

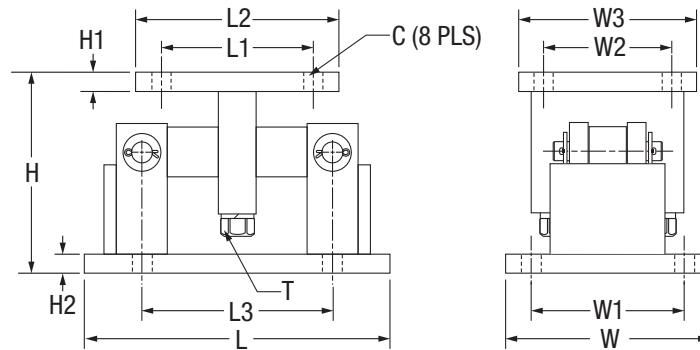
- Capacities (per module): 1,000-25,000lb
- All stainless steel construction
- Self-checking, easy-to-use design allows module to be bolted directly to tank leg without requiring additional mounting plates or load buttons
- Hermetically sealed IP66/69K protected load cells
- Double-ended shear beam design, center loaded

Applications

- Medium-capacity tanks, bins and hoppers
- Bulk material management
- Ingredient batching, mixing and blending

Load Cell Certifications





Dimensions

Rated Capacity	C	H	H1	H2	L	L1	L2	L3	T	W	W1	W2	W3
lb/in													
1,000-5,000	0.56	5.00	0.50	0.50	9.25	2.75	4.00	6.25	1/2-13 UNC	5.00	3.75	2.75	4.00
10,000-25,000	0.78	7.87	0.75	0.75	12.00	6.00	8.00	7.50	3/4-10 UNC	8.00	6.00	6.00	8.00

Order Information

Load Rating (Per Module)	Part #	Price
Single Module (Does Not Include Load Cell)		
1,000-5,000 lb	17813	\$657.00
10,000-25,000 lb	17815	\$1,283.00
3-Module Kit		
1,000 lb	46723	\$4,563.00
1,500 lb	119673	\$4,563.00
2,000 lb	119675	\$4,563.00
2,500 lb	46724	\$4,563.00
5,000 lb	46725	\$4,563.00
10,000 lb	46726	\$6,540.00
15,000 lb	46727	\$6,540.00
20,000 lb	84664	\$6,540.00
25,000 lb	46728	\$6,540.00
4-Module Kit		
1,000 lb	46729	\$5,753.00
1,500 lb	119674	\$5,753.00
2,000 lb	119676	\$5,753.00
2,500 lb	46730	\$5,753.00
5,000 lb	46731	\$5,753.00
10,000 lb	46732	\$8,554.00
15,000 lb	46733	\$8,554.00
20,000 lb	84665	\$8,554.00
25,000 lb	46734	\$8,554.00
Dummy Load Cells (Mild Steel)		
1,000-5,000 lb	18236	\$26.00
10,000-25,000 lb	18237	\$42.00

Shims*

	Part #	Price
1,000 lb–5,000 lb		
0.0625	150852	\$5.00
0.125	150853	\$10.00
0.250	150854	\$16.00
10,000 lb–25,000 lb		
0.0625	150855	\$15.00
0.125	150856	\$24.00
0.250	150857	\$62.00
50,000 lb–75,000 lb		
0.0625	150858	\$21.00
0.125	150859	\$31.00
0.250	150861	\$77.00

*Shims match the top plate

RL1855 HE-HS

Medium-capacity Weigh Modules with Hermetically Sealed Load Cells



Picture is a representation of actual product.

The internal height adjustment feature of the SURVIVOR® RL1855 HE weigh module reduces the need for shims or external hardware, simplifying installation. The standard conduit adapter allows for connection to conduit for cable protection. With standard NTEP Certified, 1:5000 division Class III load cells, the RL1855 HE weigh module provides an accurate weighing system when properly installed. Highly versatile, the RL1855 HE weigh module offers worry-free operation in a wide variety of rugged applications.

Complete Kit Includes:

- One JB4SS NEMA Type 4X stainless steel signal trim junction box
- Three or four RL1855 HE stainless steel mounts
- Three or four RL32218S-HE hermetically sealed NTEP Certified load cells
- 25 ft of hostile environment EL147HE SURVIVOR® load cell cable

Standard Features:

- All stainless steel construction
- Hermetically sealed, stainless steel IP69K
- NTEP Certified load cells, 5,000 d Class III multiple load cell
- Self-checking design with lift off/tip off protection
- Two-year limited warranty

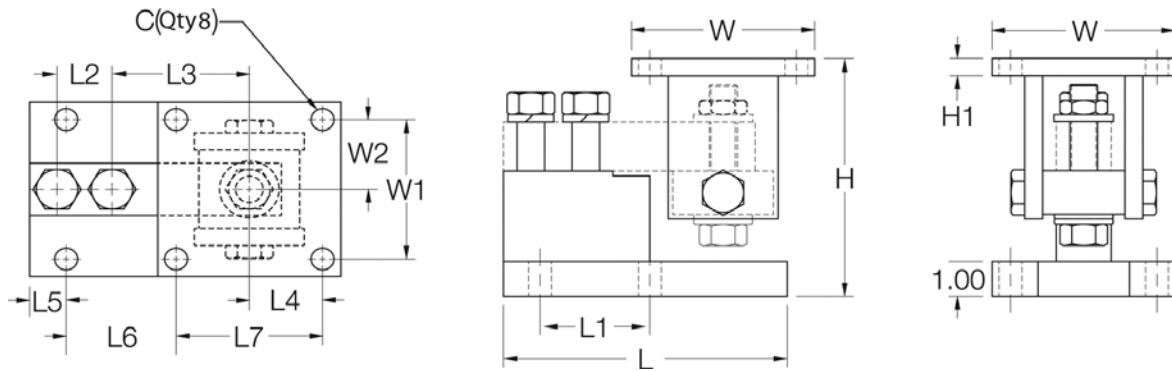
Applications

- Medium-capacity hoppers, bins and tanks
- Batching/blending

Load Cell Certifications



Medium-capacity Weigh Modules with Hermetically Sealed Load Cells



Dimensions

Rated Capacity	C	H min/max	H1	L	L1	L2	L3	L4	L5	L6	L7	W	W1	W2
lb/in														
1,000-4,000	0.62	5.25/5.56	0.50	6.00	2.00	1.00	3.00	2.00	0.68	1.94	4.00	5.00	4.00	2.00
5,000-10,000	0.62	6.12/6.62	0.50	7.75	3.00	1.50	3.75	2.00	1.03	2.97	4.00	5.00	4.00	2.00

Order Information

Load Rating (Per Module)	Part #	Price
Single Modules (Includes Load Cell)		
1,000 lb	170857	\$1,060.00
2,500 lb	170858	\$1,060.00
4,000 lb	170859	\$1,060.00
5,000 lb	170860	\$1,140.00
10,000 lb	170861	\$1,140.00
3-Module Kit		
1,000 lb	170862	\$3,339.00
2,500 lb	170863	\$3,339.00
4,000 lb	170864	\$3,339.00
5,000 lb	170865	\$3,588.00
10,000 lb	170866	\$3,588.00
4-Module Kit		
1,000 lb	170867	\$4,340.00
2,500 lb	170868	\$4,340.00
4,000 lb	170869	\$4,340.00
5,000 lb	170870	\$4,728.00
10,000 lb	170871	\$4,728.00

RL2100 HE

Heavy-capacity Weigh Modules



Picture is a representation of actual product.

Incorporating an articulating load plate, hardened load pin and double-ended beam load cell into one simple design, the RL2100HE tolerates eccentric loads and side loads of up to 100 percent of capacity. The RL2100 HE comes standard with NTEP Certified, 1:5000 division Class III L load cells, yielding up to 0.02 percent total error. An integral conduit adapter offers added washdown protection. These standard features give the RL2100 HE accuracy and dependability in one heavyweight package. The simple load introduction and load cell design provides consistent accuracy in washdown applications, making the RL2100 HE ideal for high-capacity hostile environments.

Complete Kit Includes:

- One JB4SS NEMA Type 4X stainless steel signal-trim junction box
- Three or four RL2100 HE stainless steel compression mounts
- Three or four RL75060S stainless steel, welded seal double-ended beam load cells
- 25 ft of hostile environment EL147HE SURVIVOR® load cell cable

Standard Features:

- All stainless steel construction
- Welded seal, stainless steel load cells, IP67, guaranteed waterproof
- NTEP Certified load cells, 5,000 d, Class III L/10,000 d, Class III L multiple cell
- Bolt-in-place design; module bolts directly to tank leg without requiring additional load buttons or mounting plates
- Self-checking design with lift-off/tip-over protection
- Two-year limited warranty

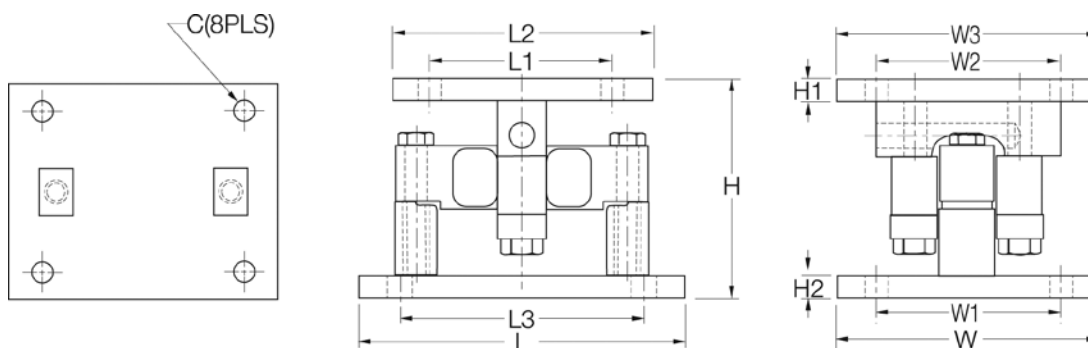
Applications

- Heavy-capacity tanks, blenders, reactors and bulk inventory management
- Petroleum refining process control
- Blending/batching

Load Cell Certifications



SURVIVOR WEIGH MODULES
RL2100 HE
 Heavy-capacity Weigh Modules



Dimensions

Rated Capacity	C	H	H1	H2	L	L1	L2	L3	W	W1	W2	W3
lb/in												
20,000-25,000	0.78	6.85	0.75	0.75	10.00	6.00	8.00	7.50	8.00	6.00	6.00	8.00
35,000-100,000	1.13	9.42	1.00	1.00	16.00	6.50	9.00	11.50	10.00	7.50	6.50	9.00

Order Information

Load Rating (Per Module)	Part #	Price
Single Module (Includes Load Cell)		
20,000 lb	32951	\$1,749.00
25,000 lb	65541	\$1,749.00
35,000 lb	32952	\$2,793.00
50,000 lb	32953	\$2,793.00
60,000 lb	32954	\$2,793.00
75,000 lb	32955	\$2,793.00
100,000 lb	32956	\$4,790.00
3-Module Kit		
20,000 lb	32970	\$5,500.00
25,000 lb	65984	\$5,500.00
35,000 lb	32969	\$8,660.00
50,000 lb	32968	\$8,660.00
60,000 lb	32967	\$8,660.00
75,000 lb	32966	\$8,660.00
100,000 lb	32965	\$14,268.00
4-Module Kit		
20,000 lb	32964	\$7,260.00
25,000 lb	65983	\$7,260.00
35,000 lb	32963	\$11,114.00
50,000 lb	32962	\$11,114.00
60,000 lb	32961	\$11,114.00
75,000 lb	32960	\$11,114.00
100,000 lb	32959	\$18,942.00

