

LOAD CELL  
**AX3040**

Alloy Steel, Environmentally Sealed, IP66



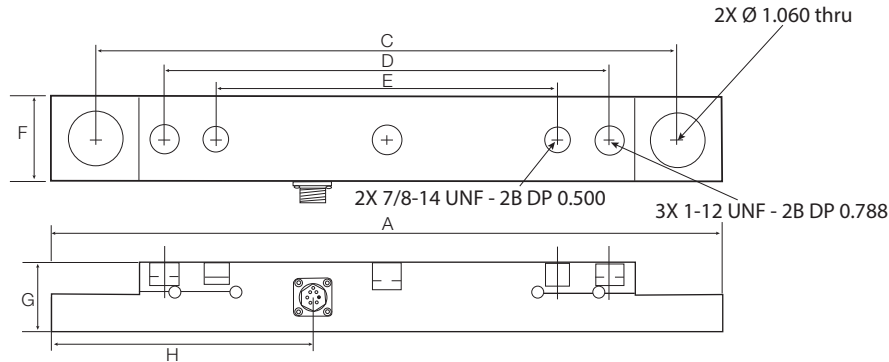
Picture is a representation of actual product

**Order Information**

Load Rating	Part #	Est. Weight	Price
20,000 lb	111766	30 lb	Consult

**Dimensions**

Rated Capacity	A	B	C	D	E	F	G	H
lb/in								
20,000	22.60	24.60	19.60	15.00	11.50	2.84	2.38	8.80



**Interchangeable Products**

8300420-10

**Specifications**

**Full Scale Output:**

0.5 mV/V at 12,500 lb

**Output Resistance:**

350 ohm (nominal)

**Input Resistance:**

350 ohm (nominal)

**Material/Finish:**

Alloy steel

**Temperature:**

Operating:

14 °F to 104 °F (-10 °C to 40 °C)

**Seal Type:**

Environmentally sealed, IP66

**Manufacturer Model Number:**

8300420-10

**Rated Excitation:**

15 VDC

**Nonlinearity:**

±1.0% full scale

**Insulation Resistance:**

5,000 megohm at 50 VDC

**Warranty:**

One-year limited