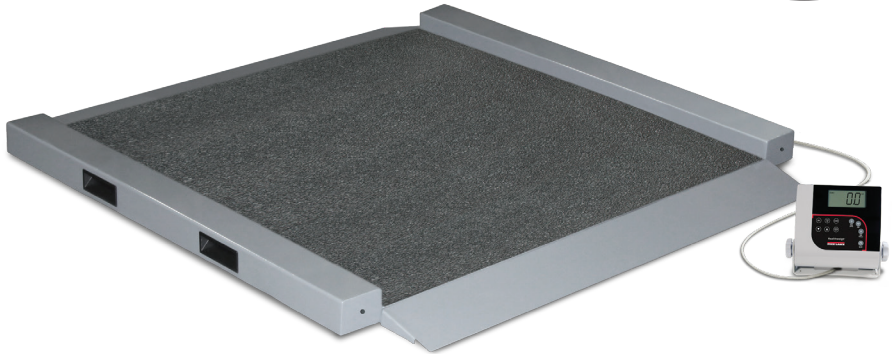


Rice Lake VS-33

34 INCHES WIDE



Standard Features

- Large LCD display
- Antimicrobial keypad
- Integrated handles and wheels for easy transport
- Dual ramp
- Large stable scale base
- Metal nonslip platform
- Unit of measure toggle or locking
- Motiontrap™ movement compensation technology
- Serial and USB data communication port
- Tare function
- Hold function
- Factory calibrated

Specifications

Capacity:

1,000 × 0.2 lb (450 × 0.1 kg)

Platform Dimensions Without Ramps:

(L × W × H)

34.00 × 34.00 × 2.20 in

Power:

9 VDC, provided by six AA alkaline batteries (included) or AC adapter (optional)

Battery Type:

Six AA alkaline (included)

Battery Use:

25 hours continuous use with batteries
Automatic power-off can be configured

Temperature:

Operating:
50 °F to 104 °F (14 °C to 40° C)

Cable Length:

9 ft (2.7 m) cable between scale base and indicator

Display:

Five-digit LCD display, 0.75 in (1.9 cm) digit height

Warranty:

Two-year limited

Part Number/Price

Part #	Model #	Capacity	Price
204400	Rice Lake VS-33	1,000 × 0.2 lb (450 × 0.1 kg) with USB	Consult

Shipping Weight

Part #	Model #	L (in)	W (in)	H (in)	Package Wgt. (lb)	Dim Wgt. (lb)	Shipping Wgt. (lb)
204400	Rice Lake VS-33	43	43	11	162	147	162

Options/Accessories

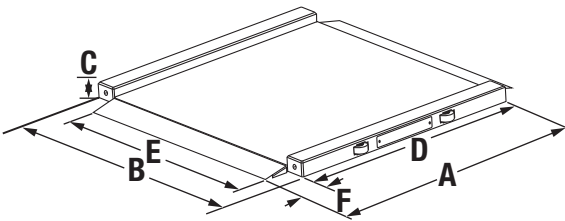
Part #	Description	Price
133077 †	9 VDC adapter, 100 to 240 VAC, 50/60 Hz auto-switching	\$30.00



† NEMA 1-15 Plug

Dimensions

	Inches	Centimeters
A	41.00	104.1
B	40.00	101.6
C	2.20	5.6
D	34.00	86.4
E	34.00	86.4
F	3.70	9.4



LARGE ANIMAL
SCALES



Wall mounted indicator,
cable enclosed in
customer supplied conduit

Standard Features

- Package includes scale, pit frame, handrail and indicator
- Large 1-inch LCD display
- Antimicrobial keypad
- Heavy-duty mild steel construction
- Unit of measure toggle or locking
- Motiontrap™ movement compensation technology
- Serial and USB communication port
- Tare function
- Hold function
- Customizable
- Factory calibrated

Specifications

Capacity:

1,000 × 0.2 lb (450 × 0.1 kg)

Platform Dimensions:

(L × W × H)

36.00 × 36.00 × 3.00 in

Power:

9 VDC, provided by six AA alkaline batteries (included) or AC adapter (optional)

Battery Type:

Six AA alkaline (included)

Battery Use:

25 hours continuous use with batteries
Automatic power-off can be configured

Display:

Five-digit LCD display, 0.75 in (1.9 cm) digit height

Temperature:

Operating:
50 °F to 104 °F (14 °C to 40 °C)

Warranty:

Two-year limited

Part Number/Price

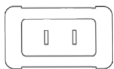
Part #	Model #	Capacity	Price
204402	Rice Lake VS-37	1,000 × 0.2 lb (450 × 0.1 kg) with USB	Consult

Shipping Weight

Part #	Model #	L (in)	W (in)	H (in)	Package Wgt. (lb)	Dim Wgt. (lb)	Shipping Wgt. (lb)
204402	Rice Lake VS-37	40	39	15	246	169	246

Options/Accessories

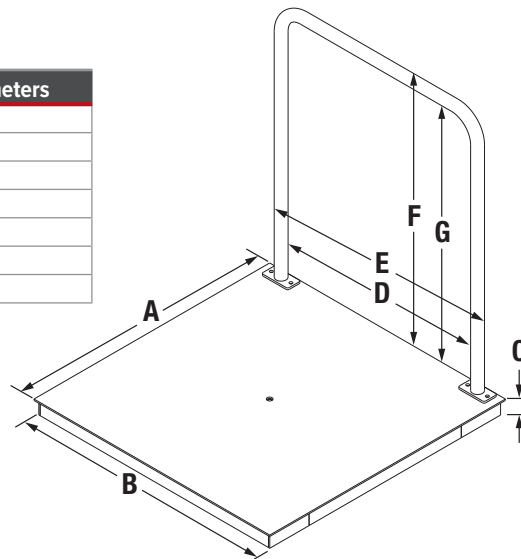
Part #	Description	Price
133077 †	9 VDC adapter, 100 to 240 VAC, 50/60 Hz auto-switching	\$30.00



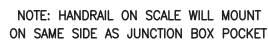
† NEMA 1-15 Plug

Dimensions

	Inches	Centimeters
A	36.00	91.4
B	36.00	91.4
C	3.00	7.6
D	28.50	72.4
E	31.50	80.0
F	37.00	94.0
G	35.50	90.2



Pit Frame Concrete Details



1. USE CONCRETE OF MINIMUM YIELD STRENGTH 5000 PSI OR 6-BAG MIX.
2. ALLOW 7 DAYS TO CURE. WET CONCRETE PERIODICALLY DURING THIS TIME.
3. DIMENSIONS SHOWN ASSURE FIRM, STABLE SOIL CONDITIONS. WHEN SOIL CONDITIONS ARE NOT ADEQUATE, PLACE FOUNDATION AT SUFFICIENT DEPTH.
4. IN WET OR WASHDOWN APPLICATIONS WE RECOMMEND THE USE OF HERMETICALLY SEALED LOAD CELLS, AND THAT THE JUNCTION BOX BE MOUNTED REMOTELY IN A DRY LOCATION.
5. WIRE MESH TO HAVE MINIMUM .75 COVER BOTTOM AND SIDES.

6. ON STAINLESS STEEL VERSIONS, TWO PIECES OF 2 INCH ANGLE WILL BE SUBSTITUTED FOR THE 4 INCH CHANNEL.



Standard Features

- Push-button LCD display
- Antimicrobial keypad
- Two wheels for portability
- Dual ramp
- Metal nonslip platform
- Motiontrap™ movement compensation technology
- Unit of measure toggle or locking
- Serial and USB communication ports
- Tare function
- Hold function
- Factory calibrated

Specifications

Capacity:

1,000 × 0.2 lb (450 × 0.1 kg)

Platform Dimensions Without Ramps:

(L × W × H)
49.30 × 32.70 × 2.60 in

Platform Dimensions with Wheels and Ramps

(L × W × H)
63.80 × 32.70 × 2.60 in

Power:

9 VDC, provided by six AA alkaline batteries (included) or AC adapter (optional)

Battery Type:

Six AA alkaline (included)

Battery Use:

25 hours continuous use with batteries
Automatic power-off can be configured

Display:

Five-digit LCD display, 0.75 in (1.9 cm) digit height

Cable Length:

7 ft (2.1 m) cable between scale base and indicator

Temperature:

Operating:
50 °F to 104 °F (10 °C to 40 °C)

Warranty:

Two-year limited

Part Number/Price

Part #	Model #	Capacity	Price
204407	Rice Lake VS-40	1,000 × 0.2 lb (450 × 0.1 kg)	Consult

Shipping Weight

Part #	Model #	L (in)	W (in)	H (in)	Package Wgt. (lb)	Dim Wgt. (lb)	Shipping Wgt. (lb)
204407	Rice Lake VS-40	67.2	36	6	154	104	154

Options/Accessories

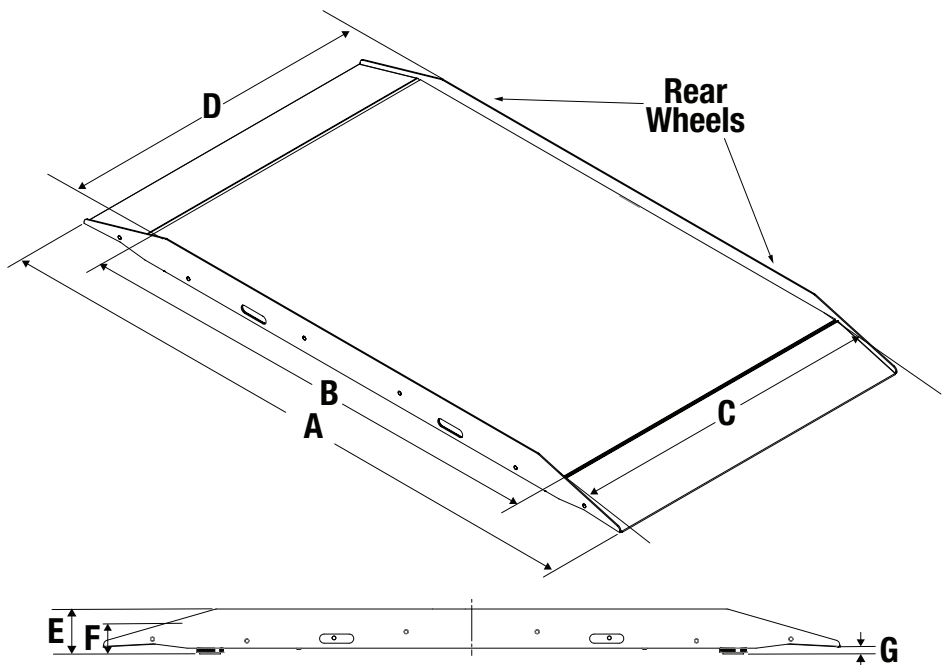
Part #	Description	Price
133077 †	9 VDC adapter, 100 to 240 VAC, 50/60 Hz auto-switching	\$30.00



† NEMA 1-15 Plug

Dimensions

	Inches	Centimeters
A	63.80	162.1
B	49.30	125.3
C	32.70	83.1
D	32.90	83.6
E	3.90	9.9
F	2.60	6.7
G	0.55	1.4



RoughDeck® SLV

Single Animal Livestock Scale



Approvals



Standard Features

- Mild steel construction
- Diamond safety tread plate deck
- Rigid-type structural steel channel frame
- NEMA Type 4X stainless steel side-access junction box without quick connector
- Signal trim summing board
- Four adjustable stainless steel SUREFOOT™ support feet
- SURVIVOR® EL147HE hostile environment load cell cable
- Four alloy steel load cells

Specifications

Full Scale Capacity:

4,000 lb, 1 lb increments

End Load Capacity:

125% full scale

Cable Length:

20 ft (6 m)

Warranty:

Two-year limited (scale only)

Approvals:

NTEP 92-001 Class III 4,000 d

Capacity not to exceed 4,000 lb x 1 lb and platform size not to exceed 32 sq ft

Part Number/Price

Part #	Capacity	Outside Dimensions	Est. Weight	Price
103617	4,000 lb, 20 ft without Quick Connect, modified to fit gate and rack (scale platform only)	8 × 3 ft	565 lb	\$3,700.00
78452	4,000 lb, 20 ft without Quick Connect (gate and rack not included) (scale platform only)	8 × 3 ft	565 lb	\$3,700.00
103619	4,000 lb, 20 ft without Quick Connect, modified to fit gate and rack (scale platform only)	8 × 4 ft	750 lb	\$3,800.00
78453	4,000 lb, 20 ft without Quick Connect (gate and rack not included) (scale platform only)	8 × 4 ft	750 lb	\$3,800.00
RoughDeck SLV 4,000 lb Bundle Package (Ships Assembled)				
231387	Scale Pkg, 3 × 8 ft, 4,000 lb capacity with swing gates, racks, kick plates, 380 Synergy indicator, factory calibrated prior to shipping with 1 lb increments.	8 × 3 ft	1,200 lb	\$6,500.00
231388	Scale Pkg, 3 × 8 ft, 4,000 lb capacity with slide gates, racks, kick plates, 380 Synergy indicator, factory calibrated prior to shipping with 1 lb increments.	8 × 3 ft	1,310 lb	\$9,200.00
231389	Scale Pkg, 4 × 8 ft, 4,000 lb capacity with swing gates, racks, kick plates, 380 Synergy indicator, factory calibrated prior to shipping with 1 lb increments.	8 × 4 ft	1,500 lb	\$7,100.00
231390	Scale Pkg, 4 × 8 ft, 4,000 lb capacity with slide gates, racks, kick plates, 380 Synergy indicator, factory calibrated prior to shipping with 1 lb increments.	8 × 4 ft	1,610 lb	\$9,800.00

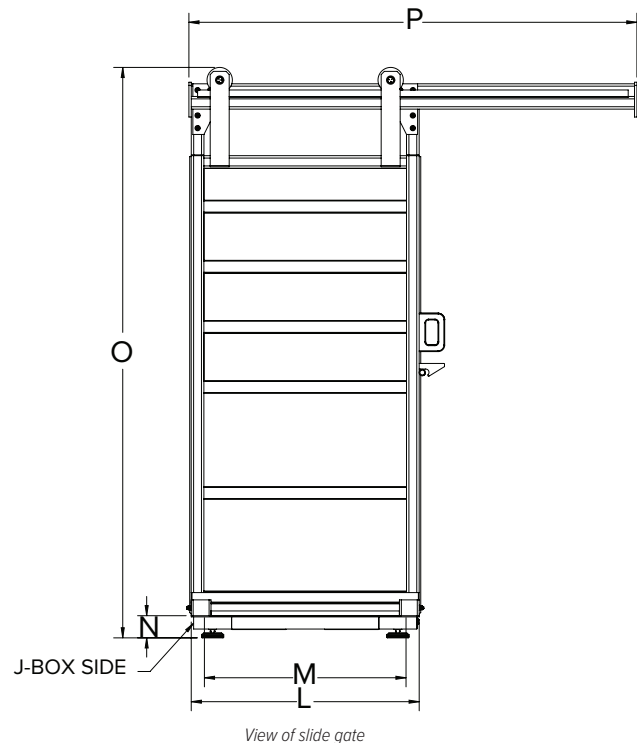
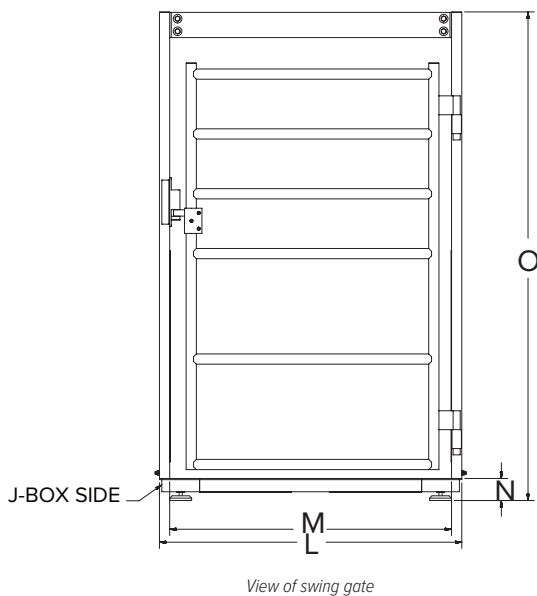
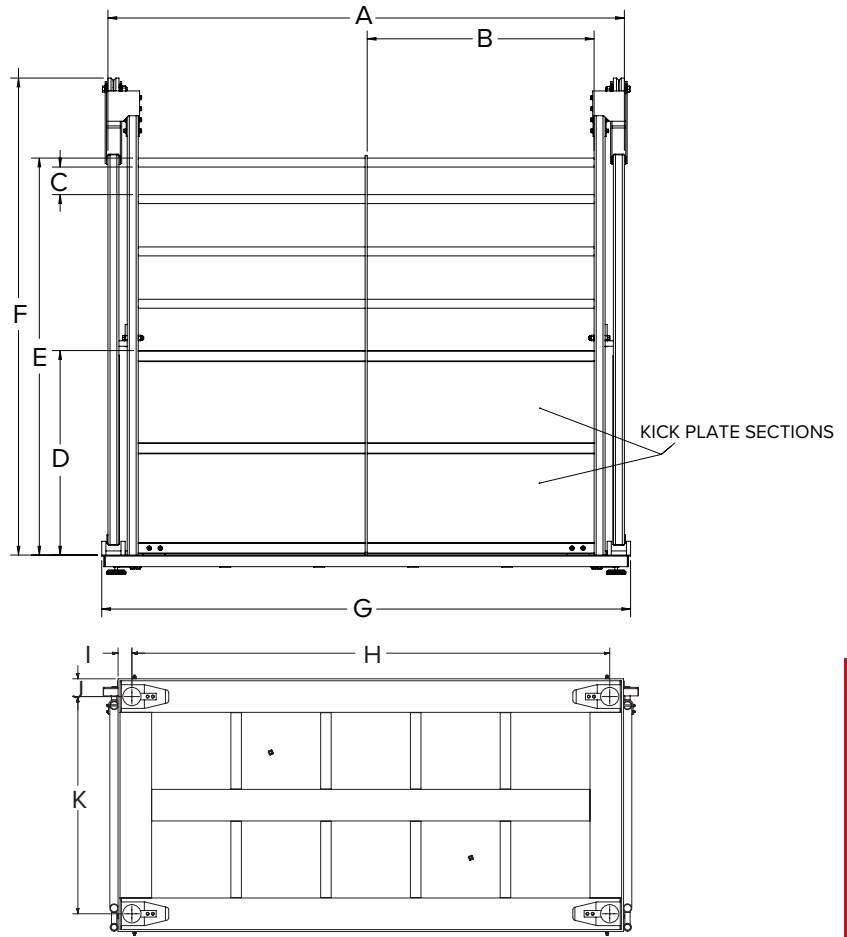
Options/Accessories

Part #	Description	Price
Consult	Smooth deck instead of diamond safety tread plate	N/C
Consult	Stainless steel load cells (RL32018S IP66) and hardware	\$120.00 list price add-on
Consult	Stainless steel hermetically sealed load cells (RL32218S-HE IP69K) and hardware	\$440.00 list price add-on
Consult	Angle iron bolted to scale for wood deck provisions (wood to be supplied by customer)	\$225.00
Consult	Rubber mat	Consult
226036	380 universal segmented LCD display, battery powered, Synergy Series with 4-pin quick connect ag scale cable	\$785.00
18777	Floor anchor plates, mild steel (set of 2)	\$40.00
18778	Floor anchor plates, stainless steel (set of 2)	\$55.00

LARGE ANIMAL
SCALES

Dimensions

RoughDeck SLV			
3 × 8 ft			
A	93.75 in	I	2.62 in
B	41.19 in	J	3.38 in
C	5.01 in	K	29.25 in
D	37.12 in	L	36.00 in
E	72.06 in	M	31.84 in
F	74.00 in (swing gate) 86.59 in (slide gate)	N	3.50 in
G	96.00 in	O	77.50 in (swing gate) 90.09 in (slide gate)
H	90.76 in	P	70.75 in
4 × 8 ft			
A	93.75 in	I	2.62 in
B	41.19 in	J	3.38 in
C	5.01 in	K	41.25 in
D	37.12 in	L	48.00 in
E	72.06 in	M	43.85 in
F	74.00 in (swing gate) 86.59 in (slide gate)	N	3.50 in
G	96.00 in	O	77.50 in (swing gate) 90.09 in (slide gate)
H	90.76 in	P	94.75 in



RoughDeck® EQ

Equine Floor Scale and Indicator Package



Standard Features

- Package includes 4 ft × 6 ft × 4.25 in floor scale with stall mat, 20 ft of SURVIVOR® EL147HE hostile environment load cell cable and indicator
- Mat thickness 0.75 in

Scale

- Heavy-duty design with structural steel channel frame
- Stall mat to reduce noise and instill equine comfort
- Four adjustable stainless steel SUREFOOT™ support feet
- Powder-coated black matte finish

Indicator

- LCD backlit display for a variety of environments
- Battery backed time and date
- Communication ports for connecting to a variety of peripherals

RoughDeck EQ Specifications

End Load Capacity:

100% full scale at 2,500 lb

Load Cells:

Model RL32018 alloy steel environmentally sealed IP66

Junction Box:

Side access, TuffSeal JB4SS stainless steel, NEMA Type 4X with a signal card

Feet:

Stainless steel SUREFOOT, adjustable (+0.25 in or -0.125 in) for leveling the scale

Finish:

Powder coat painted, black matte

Cable Length:

20 ft (6.1 m) for connecting scale junction box to indicator

Threaded Eyebolt:

One lifting hole located in center of scale for easy install (requires 1/2-20NF eyebolt, not included)

Warranty:

Two-year limited

381 Specifications

Power:

Battery: AA or Nickel Metal Hydride (NiMH)
381-2D-AA Adapter: 115/230 VAC to 12 VDC
381-2D-NiMH Charger: 115/230 VAC

Battery Life:

AA: 40 hours with one × 350 ohm load cell
NiMH: 80 hours with one × 350 ohm load cell

Communication Ports:

One full-duplex RS-232
One USB 2.0

Display:

Six 1 in (25 mm) tall, LCD digits

Annunciators:

g, lb, t, tn, kg, oz, battery level, PT, LT, gross, zero, unstable, net

Keys/Buttons:

Five tactile buttons

Rating/Material:

AA Battery: IP54, ABS
NiMH Battery: IP66, ABS

Approvals:

NTEP 21-051 Class III/IIIL, 10,000 d
Measurement Canada AM-6184

Part Number/Price

Part #	Size (W × L × H)	Capacity	Est. Weight	Price
RoughDeck EQ Floor Scale with 381 Indicator				
231030	4 ft × 6 ft × 4.25 in	2,500 × 0.5 lb	610 lb	\$3,350.00

Note: Height includes stall mat

Options/Accessories

Part #	Description	Price
Consult	Access ramps	+ Consult list price add-on
Consult	Smooth deck instead of diamond safety tread plate	N/C
12839*	50 lb cast iron calibration weights	\$190.00
207812	Guide rail, 5.66 ft long × 4.36 ft high, field installable, black matte finish	+\$295.00 list price add-on
18777	Floor anchor plates	\$40.00
Consult	Hermetically sealed load cells	Consult

*Quantity of 5 weights is recommended for 10% of capacity.



RoughDeck EQ with two optional guide rails installed

