

Picture is a representation of actual product

### Approvals



Available upon request

### Order Information

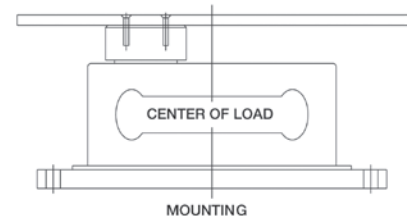
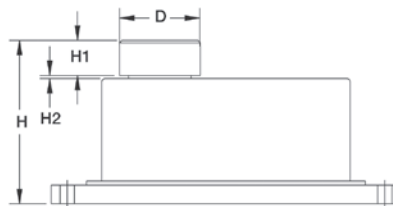
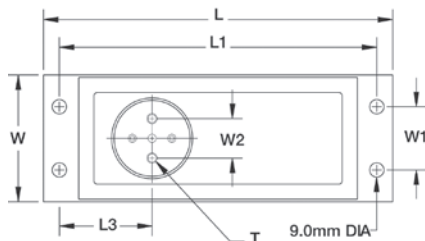
Load Rating	Part #	Est. Weight	Price
<b>Stainless Steel</b>			
2 kg*	17567	8 lb	Consult
5 kg	17568	8 lb	Consult
7 kg	17569	8 lb	Consult
10 kg	17570	8 lb	Consult
15 kg	17571	8 lb	Consult
20 kg	17572	8 lb	Consult
30 kg	17573	8 lb	Consult
50 kg	17574	8 lb	Consult
<b>Alloy Steel</b>			
2 kg*	17559	8 lb	Consult
5 kg	17560	8 lb	Consult
7 kg	17561	8 lb	Consult
10 kg	17562	8 lb	Consult
15 kg	17563	8 lb	Consult
20 kg	17564	8 lb	Consult
30 kg	17565	8 lb	Consult
50 kg	17566	8 lb	Consult

\*Non-NTEP Certified

Note: The special fluid damped operation is particularly well-suited for applications where quick weighment is required, e.g., checkweighers

### Dimensions

Rated Capacity	D	H	H1	H2	L	L1	L3	T	W	W1	W2
kg/mm											
2 to 50	50 dia	115.0	21.0	2.0	220.0	200.0	58.5	1/4-20 UNC × 10 DP	80.0	40.0	25.0



### Interchangeable Products

RICE LAKE WEIGHING SYSTEMS

**RL260FD\*** ..... page 179

\*3000d NTEP, 16.4 ft cable

### Specifications

**Full Scale Output:**

2.0 mV/V

**Output Resistance:**

350 (± 3) ohm

**Input Resistance:**

415 (± 15) ohm

**Material/Finish:**

Anodized aluminum in alloy steel or stainless steel

**Temperature:**

Compensated range  
14 °F to 104 °F (-10 °C to 40 °C)  
Operating range  
0 °F to 150 °F (-18 °C to 65 °C)

**Seal Type:**

Environmentally sealed, IP66

**Safe Overload:**

150% at center loading point, full scale

**Rated Excitation:**

5 to 10 VDC (15 V maximum)

**Combined Error:**

0.025% full scale

**Insulation Resistance:**

2,000 megohm

**Cable Length:**

10 ft

**Cable Diameter:**

0.370 in PVC jacket

**Cable Color Code:**

Green +Excitation  
Black -Excitation  
Red +Signal  
White -Signal  
Blue +Sense  
Brown -Sense

**Warranty:**

One-year limited

**Approvals:**

NTEP  
OIML (Available upon request)