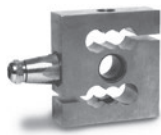


S-BEAMS

Page 216

UB1, STAINLESS STEEL

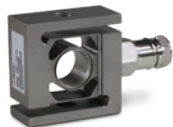


Designed for single or multiple-cell tension load applications, these stainless steel s-beams feature voltage factory calibration, assuring matched outputs for easy calibration in multiple-cell applications. Features hermetic sealing of the strain gauge area and cable entry, providing the ultimate in protection from outside elements. 20 ft of cable is included to simplify cable and load cell repairs. Capacities range from 10 kN to 50 kN.



Page 217

UB6, STAINLESS STEEL



Stainless steel s-beam designed to meet the most stringent accuracy requirements. 20 ft of field-replaceable cable is included to simplify cable and load cell repairs. Capacities range from 1 kN to 5 kN.



SINGLE-ENDED BEAMS

Page 218

SLB, STAINLESS STEEL



This stainless steel, single-ended beam has one of the highest NTEP Certified ratings in the industry. A new generation of potting makes this load cell suitable for tough industrial environments. Capacities range from 200 to 5,000 lb. Complete with 10 ft of load cell cable.



Page 219

SB4, STAINLESS STEEL



Designed for multiple-cell applications, such as floor scales and hoppers, these stainless steel, single-ended beams are used exclusively in Rice Lake Weighing Systems' Paramounts® HS mounting systems. Voltage factory calibration assures matched outputs for easy calibration. Features true hermetic sealing of both the strain gauge area and cable entry, providing protection from outside elements. Includes field-replaceable load cell cable to simplify cable and load cell repairs. Available in both NTEP Certified and Non-NTEP Certified ranges 5 kN to 100 kN.



Page 220

SB5, STAINLESS STEEL



Made for multiple-cell applications, such as floor scales and tank, bin and hopper weighing systems. Used exclusively in Rice Lake Weighing Systems' Paramounts® EP mounting systems. Millivolt/volt/ohm factory calibration assures matched outputs for easy calibration. Available in both NTEP Certified and Non-NTEP Certified ranges 5 kN TO 100 kN.



Page 221

BK2, STAINLESS STEEL



Designed to lower the scale profile by providing a load cell that is half the overall height of traditional solutions. Ideal for applications such as low-profile floor scales, this model is constructed of stainless steel and is environmentally potted to provide suitable protection for indoor applications. The standard calibration technique used by Flintec® avoids time-consuming calibration for multiple load cell applications. Available in capacities from 200 kg to 2,000 kg and includes 10 ft of standard load cell cable.



Page 222

SB6, STAINLESS STEEL



Stainless steel, fully hermetically sealed, single-ended beam with special loading hole provides excellent performance in the harshest environments with a low-profile design. Capacities range from 0.2 kN to 2 kN. Complete with 10 ft of load cell cable.



SINGLE-ENDED BEAMS

Page 223

SB10, STAINLESS STEEL



Used in the 2.3 kN Paramounts® assemblies. This stainless steel, hermetically sealed load cell provides full IP68 sealing protection for the harshest environments. Ideal for use in multiple-cell floor scale, tank and hopper applications. The unique voltage factory calibration assures matched outputs for easy field replacement and calibrations. The capacity of this model is 2.5 kN. Each unit is supplied with 10 ft of load cell cable.



Page 224

SB14, STAINLESS STEEL



Stainless steel, fully hermetically sealed, single-ended beam suitable for the harshest environments. Capacities range from 500 lb to 5,000 lb. Complete with 10 ft of load cell cable.



ROCKER COLUMNS

Page 225

RC1, STAINLESS STEEL



Offers stainless steel and real hermetic sealing, making these cells suitable for use in tough industrial environments. Capacities are 250 kN and 400 kN and 50,000 lb. Cable lengths vary from 35 ft to 60 ft for easy field replacement and load cell repairs.



Page 226

RC3, STAINLESS STEEL



Rocker designed and provides superior performance and full hermetic design in applications in moist and high humidity environments. Constructed of stainless steel. Available in capacities from 7.5 t to 50 t.



SINGLE POINTS

Page 227

PCB, STAINLESS STEEL



A unique "brick" style of load cell. Constructed of stainless steel and hermetically sealed, this unique design provides superior protection in applications where moisture and high humidity are problems. This model features both a welded gauge cavity area, and waterproof cable entry for long-lasting performance. With its interchangeable design, it provides the ability to upgrade applications. Available in capacities from 50 kg to 1,000 kg. Each unit includes 10 ft of load cell cable.



Page 228

PC1, STAINLESS STEEL



With an environmentally protected seal and stainless steel construction, these load cells are suitable for use in tough industrial environments. Capacities range from 10 kg to 200 kg.



SINGLE POINTS

Page 229

PC3, STAINLESS STEEL



A stainless steel, single point load cell. Has an IP67 rating and is environmentally sealed, making it ideal for harsh environments. Capacities range from 7 kg to 150 kg. Complete with 10 ft of load cell cable.



Page 230

PC4, STAINLESS STEEL



Hermetic load cell that is ideal for adverse conditions. Made of stainless steel with a single point design. Capacities from 10 kg to 100 kg are NTEP Certified and OIML approved. Complete with 10 ft of cable.



Page 231

PC6, STAINLESS STEEL



Constructed of stainless steel and a real hermetic sealing, these load cells are suitable for tough industrial environments. Includes 3 m of field-replaceable load cell cable to simplify cable and load cell repairs. Capacities range from 20 kg to 200 kg.



Page 232

PC7, STAINLESS STEEL



Ideal for washdown applications. Hermetically sealed to IP69K standards, this stainless steel component comes with 3 m of cable and an integrated mounting spacer for easy installation.



Page 233

PC2, STAINLESS STEEL



This high-accuracy stainless steel, single-point load cell is an ideal replacement cell for hopper applications with damaged bellows. This cell also features complete hermetic sealing for use in the toughest environments. This product is offered at 150 kg and comes complete with 10 ft of load cell cable.



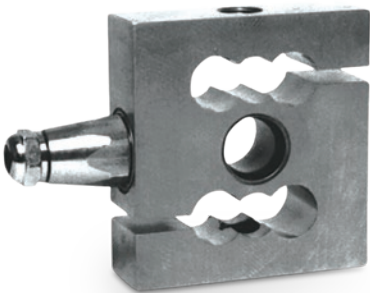
PLANAR BEAM

Page 234

PB, ALUMINUM



An inexpensive alternative planar beam used in low profile, light capacity applications. The compact size and mV/V per ohm calibration simplifies installation. Capacities range from 15 kg to 150 kg and includes 1.5 m of load cell cable.



Picture is a representation of actual product.

Approvals



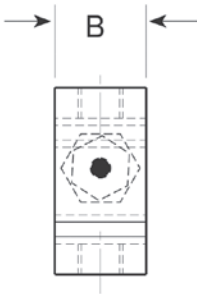
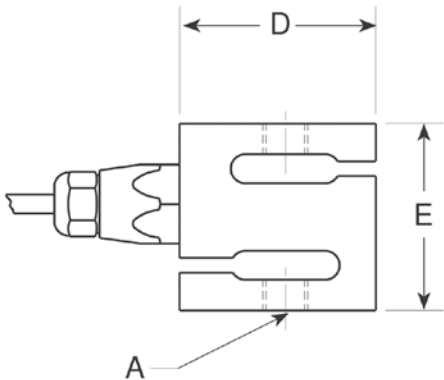
Order Information

Load Rating	Part #	Est. Weight	Price
10 kN	17073	4 lb	\$747.00
20 kN	17074	4 lb	\$747.00
50 kN	17075	13 lb	\$747.00
Options			
Conduit adapter, 1/2-14 NPT	17703	1 lb	\$50.00

Dimensions

Rated Capacity	A*	B	D	E
kN/in				
10 to 20	5/8-18 UNF	1.18	3.38	3.62
50	1-12 UNF	1.69	5.62	5.37

*Also available with metric threads



Specifications

- Full Scale Output:**
2.0 mV/V
mV/V/ohm calibration
- Output Resistance:**
1,000 (± 2) ohm
- Input Resistance:**
1,100 (± 50) ohm
- Material/Finish:**
Stainless steel
- Temperature:**
Operating range
0 °F to 150 °F (-18 °C to 65 °C)
- Seal Type:**
Hermetically sealed, IP69K
- Safe Overload:**
200% full scale
- Rated Excitation:**
5 to 10 VDC (15 V maximum)
- Nonlinearity:**
0 to -0.03% full scale
- Hysteresis:**
0 to +0.05% full scale
- Combined Error:**
± 0.03%
- Insulation Resistance:**
10,000 megohm
- Cable Length:**
20 ft
- Cable Diameter:**
0.196 in
Polyurethane jacket
- Cable Color Code:**
Green +Excitation
Black -Excitation
White +Signal
Red -Signal
Yellow Shield
- Warranty:**
One-year limited
- Approvals:**
FM
OIML



Picture is a representation of actual product.

Approvals



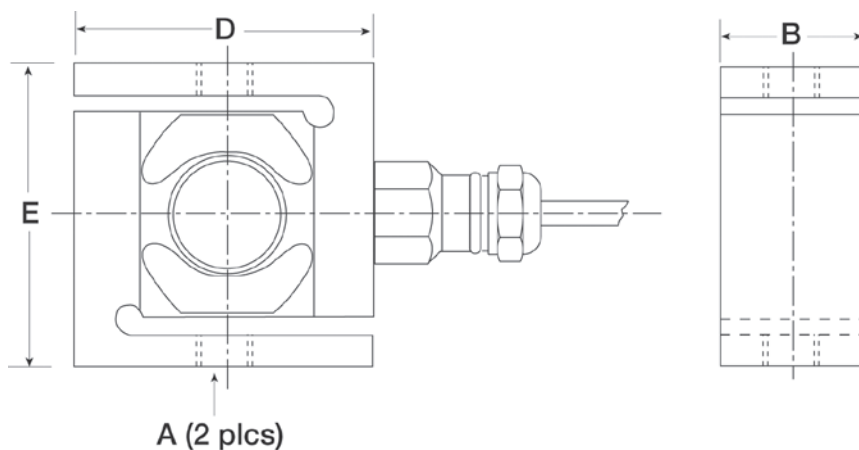
Order Information

Load Rating	Part #	Est. Weight	Price
1 kN	36214	3lb	\$640.00
2 kN	36215	3lb	\$640.00
5 kN	36216	3lb	\$640.00

Dimensions

Rated Capacity	A*	B	D	E
kN/in				
1 to 5	1/2-20 UNF	1.20	2.42	2.42

*Also available with metric threads



Specifications

Full Scale Output:

2.0 mV/V
mV/V/ohm calibration

Output Resistance:

1,000 (± 2) ohm

Input Resistance:

1,100 (± 50) ohm

Material/Finish:

Stainless steel

Temperature:

Operating range
0 °F to 150 °F (-18 °C to 65 °C)

Seal Type:

Hermetically sealed, IP69K

Safe Overload:

200% full scale

Rated Excitation:

5 to 10 VDC (15 V maximum)

Combined Error:

0.02% full scale

Insulation Resistance:

5,000 megohm

Cable Length:

20 ft

Cable Diameter:

0.196 in
Polyurethane jacket

Cable Color Code:

Green +Excitation
Black -Excitation
White +Signal
Red -Signal
Yellow Shield

Warranty:

One-year limited

Approvals:

FM
OIML

SLB

Stainless Steel, Environmentally Sealed, NTEP Certified 1:4,000 Class III Single Cell/1:7,500 Class III Multiple Cell, OIML C3, IP67



Picture is a representation of actual product.

Approvals



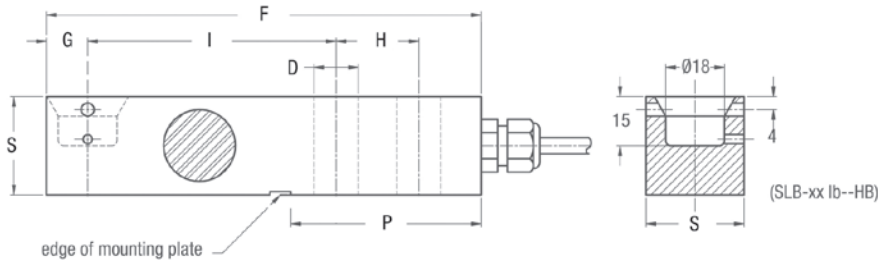
Order Information: Blind Hole

Load Rating	Part#	Est. Weight	Price
200 lb	77422	3 lb	\$350.00
500 lb	77423	3 lb	\$350.00
1,000 lb	68527	3 lb	\$350.00
2,500 lb	68528	3 lb	\$350.00
5,000 lb	68529	3 lb	\$350.00

Threaded version obsolete

Dimensions

Rated Capacity	D	F	G	H	I	P	S
lb/in							
200 to 5,000	0.51	5.37	0.50	1.00	3.00	2.42	1.19



Interchangeable Products

FAIRBANKS**
LCF-HR4050-3

*Stainless overbraid cable

Specifications

- Full Scale Output:**
2.0 mV/V
mV/V/ohm calibration
- Output Resistance:**
1,000 (± 2) ohm
- Input Resistance:**
1,100 (± 50) ohm
- Material/Finish:**
Stainless steel
- Temperature:**
Compensated range
14 °F to 104 °F (-10 °C to 40 °C)
Operating range
0 °F to 150 °F (-18 °C to 65 °C)
- Seal Type:**
Environmentally sealed, IP67
- Safe Overload:**
200% full scale
- Safe Sideload:**
100% full scale
- Rated Excitation:**
5 to 10 VDC (15 V maximum)
- Insulation Resistance:**
5,000 megohm
- Combined Error:**
0.01% full scale
- Cable Length:**
10 ft
- Cable Diameter:**
0.196 in
Polyurethane jacket
- Cable Color Code:**
Green +Excitation
Black -Excitation
White +Signal
Red -Signal
Yellow Shield
- Warranty:**
One-year limited
- Approvals:**
FM
NTEP
OIML



Picture is a representation of actual product.

Approvals



Order Information

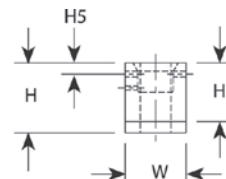
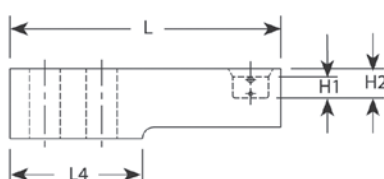
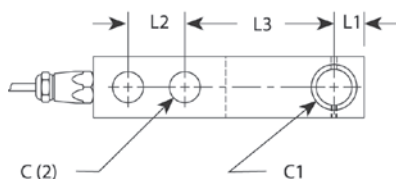
Load Rating	Part #	Est. Weight	Price
NTEP Certified/OIML			
5 kN	26662	4 lb	\$715.00
10 kN	26663	4 lb	\$715.00
23 kN	26664	4 lb	\$715.00
50 kN	26665	7 lb	\$795.00
Non-NTEP Certified/Non-OIML			
5 kN	17390	4 lb	\$652.00
10 kN	17391	4 lb	\$652.00
23 kN	17392	4 lb	\$652.00
50 kN	17393	7 lb	\$715.00
100 kN	17394	17 lb	\$970.00
Options			
Conduit adapter, 1/2-14 NPT	17703	1 lb	\$50.00

30 ft Cables

Load Rating	Part #	Est. Weight	Price
NTEP Certified/OIML			
5 kN	100164	4 lb	\$821.00
10 kN	100165	4 lb	\$821.00
23 kN	100166	4 lb	\$821.00
50 kN	100167	7 lb	\$970.00
Non-NTEP Certified/Non-OIML			
5 kN	100169	4 lb	\$747.00
10 kN	100170	4 lb	\$747.00
23 kN	100171	4 lb	\$747.00
50 kN	100173	7 lb	\$832.00
100 kN	100168	17 lb	\$1,033.00

Dimensions

Rated Capacity	C	C1	H	H1	H2	H3	H5	L	L1	L2	L3	L4	W
kN/in													
5 to 23	0.53	0.71	1.42	0.39	0.59	1.19	0.16	6.10	0.59	1.38	3.15	2.98	1.18
50	0.85	0.98	1.93	0.58	0.81	1.62	0.31	7.48	0.83	1.57	4.13	3.66	1.69
100	1.06	1.18	2.87	0.82	1.21	2.43	—	9.65	1.19	1.97	5.31	4.72	2.36



Weigh Module Available

RICE LAKE WEIGHING SYSTEMS

Paramounts® HE..... page 36

RICE LAKE WEIGHING SYSTEMS

Paramounts® HS..... page 49

Specifications

Full Scale Output:

2.0 mV/V
mV/V/ohm calibration

Output Resistance:

1,000 (± 2) ohm

Input Resistance:

1,100 (± 50) ohm

Material/Finish:

Stainless steel

Temperature:

Compensated range
14 °F to 104 °F (-10 °C to 40 °C)
Operating range
0 °F to 150 °F (-18 °C to 65 °C)

Seal Type:

Hermetically sealed, IP69K

Safe Overload:

200% full scale

Safe Sideload:

100% full scale

Rated Excitation:

5 to 10 VDC (15 V maximum)

Combined Error:

± 0.03% full scale

Insulation Resistance:

10,000 megohm

Deflection at Capacity:

10 kN: 0.012 in
23 kN: 0.02 in
50 kN: 0.012 in
100 kN: 0.016 in

Cable Length:

5 to 23 kN: 10 ft
50 to 100 kN: 15 ft
Also available in 30 ft.

Cable Diameter:

0.196 in
Polyurethane jacket

Cable Color Code:

Green +Excitation
Black -Excitation
White +Signal
Red -Signal
Yellow Shield

Warranty:

One-year limited

Approvals:

FM
NTEP
OIML

SB5

Stainless Steel, Environmentally Sealed, NTEP Certified 1:5,000 Class III Multiple Cell, OIML C3, IP67



Picture is a representation of actual product

Approvals



Order Information

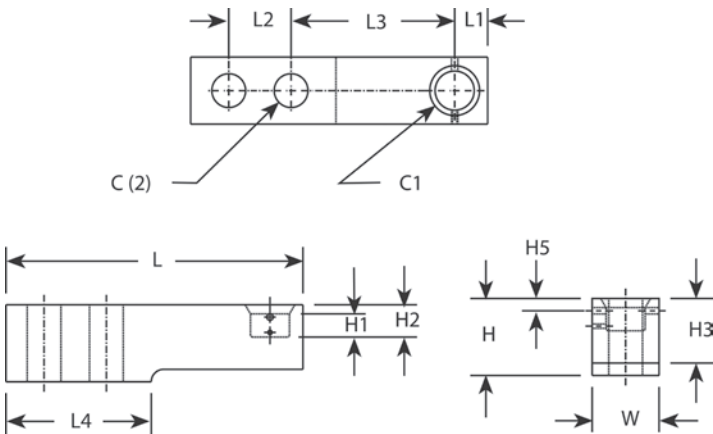
Load Rating	Part #	Est. Weight	Price
NTEP Certified/OIML			
5 kN	33387	3 lb	\$430.00
10 kN	33388	3 lb	\$430.00
20 kN	33389	3 lb	\$430.00
50 kN	33390	7 lb	\$560.00
Non-NTEP Certified/Non-OIML			
100 kN	33391	16 lb	\$853.00

30 ft Cables

Load Rating	Part #	Est. Weight	Price
NTEP Certified/OIML			
5 kN	100174	5 lb	\$487.00
10 kN	100175	5 lb	\$487.00
20 kN	100176	5 lb	\$487.00
50 kN	100177	7 lb	\$720.00
Non-NTEP Certified/Non-OIML			
100 kN	100178	16 lb	\$932.00

Dimensions

Rated Capacity	C	C1	H	H1	H2	H3	H5	L	L1	L2	L3	L4	W
kN/in													
5 to 20	0.53	0.71	1.42	0.39	0.59	1.19	0.16	6.10	0.59	1.38	3.15	2.98	1.18
50	0.85	0.98	1.93	0.58	0.81	1.62	0.31	7.48	0.83	1.57	4.13	3.66	1.69
100	1.06	1.18	2.87	0.82	1.21	2.43	—	9.65	1.19	1.97	5.31	4.72	2.36

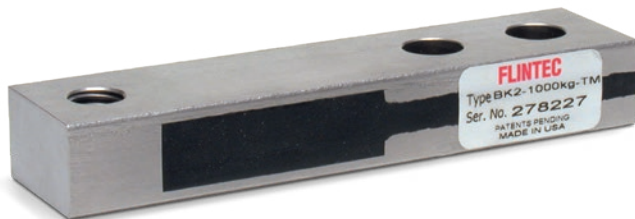


Weigh Module Available

RICE LAKE WEIGHING SYSTEMS
Paramounts® EP.....page 47

Specifications

- Full Scale Output:**
2.0 mV/V
mV/V/ohm calibration
- Output Resistance:**
1,000 (± 2) ohm
- Input Resistance:**
1,100 (± 50) ohm
- Material/Finish:**
Stainless steel
- Temperature:**
Compensated range
14 °F to 104 °F (-10 °C to 40 °C)
Operating range
0 °F to 150 °F (-18 °C to 65 °C)
- Seal Type:**
Environmentally sealed, IP67
- Safe Overload:**
200% full scale
- Safe Sideload:**
100% full scale
- Rated Excitation:**
5 to 10 VDC (15 V maximum)
- Combined Error:**
± 0.03% full scale
- Insulation Resistance:**
10,000 megohm
- Deflection at Capacity:**
5 kN: 0.008 in
10 kN: 0.012 in
20 kN: 0.02 in
50 kN: 0.012 in
- Cable Length:**
5 to 20 kN: 10 ft
50 to 100 kN: 15 ft
Also available in 30 ft
- Cable Diameter:**
0.196 in
Polyurethane jacket
- Cable Color Code:**
Green +Excitation
Black -Excitation
White +Signal
Red -Signal
Yellow Shield
- Warranty:**
One-year limited
- Approvals:**
FM
NTEP
OIML



Picture is a representation of actual product.

Approvals



Available
upon
request

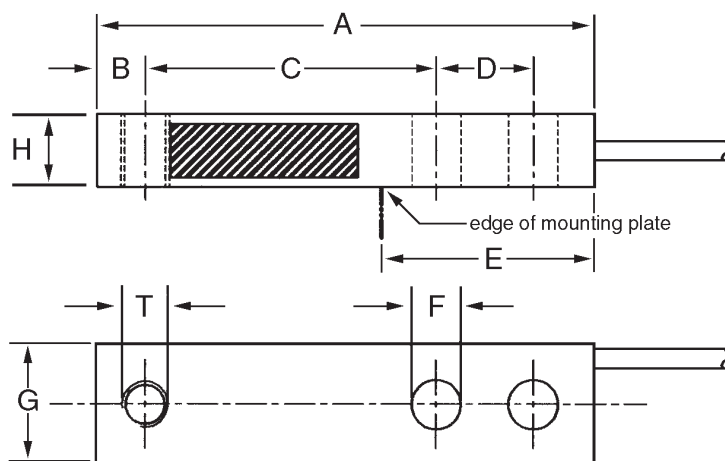
Order Information

Load Rating	Part #	Est. Weight	Price
NTEP Certified			
500 kg	84839	2 lb	\$243.00
1,000 kg	84840	2 lb	\$243.00
2,000 kg	84841	2 lb	\$243.00
Non-NTEP Certified			
200 kg	84838	2 lb	\$243.00

Dimensions

Rated Capacity	A	B	C	D	E	F	G	H	T*
kg/mm									
200	128.5	12.7	76.2	25.4	53.8	13(2x)	31.8	16.1	1/2-20 UNF
500	128.5	12.7	76.2	25.4	53.8	13(2x)	31.8	16.1	1/2-20 UNF
1,000	128.5	12.7	76.2	25.4	53.8	13(2x)	31.8	19.1	1/2-20 UNF
2,000	130.2	12.7	76.2	25.4	53.8	13(2x)	31.8	25.4	1/2-20 UNF

*Metric thread is available



Specifications

Full Scale Output:

2.0 mV/V
mV/V/ohm calibration

Output Resistance:

1,000 (± 2) ohm

Input Resistance:

1,100 (± 50) ohm

Material/Finish:

Stainless steel

Temperature:

Compensated range
14 °F to 104 °F (-10 °C to 40 °C)
Operating range
0 °F to 150 °F (-18 °C to 65 °C)

Seal Type:

Environmentally sealed, IP67

Safe Overload:

200% full scale

Safe Sideload:

100% full scale

Rated Excitation:

5 to 10 VAC/DC (15 V maximum)

Combined Error:

0.030%

Insulation Resistance:

5,000 megohm

Cable Length:

10 ft
Also available in 30 ft

Cable Diameter:

0.196 in
Polyurethane jacket

Cable Color Code:

Green +Excitation
Black -Excitation
White +Signal
Red -Signal
Yellow Shield

Warranty:

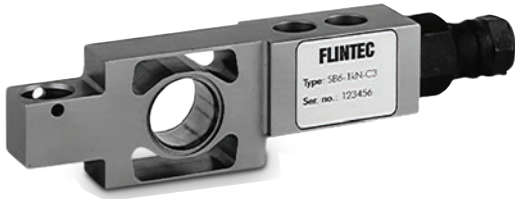
One-year limited

Approvals:

NTEP
EX
OIML (Available upon request)

SB6

Stainless Steel, Hermetically Sealed, OIML C3, IP68



Picture is a representation of actual product.

Approvals

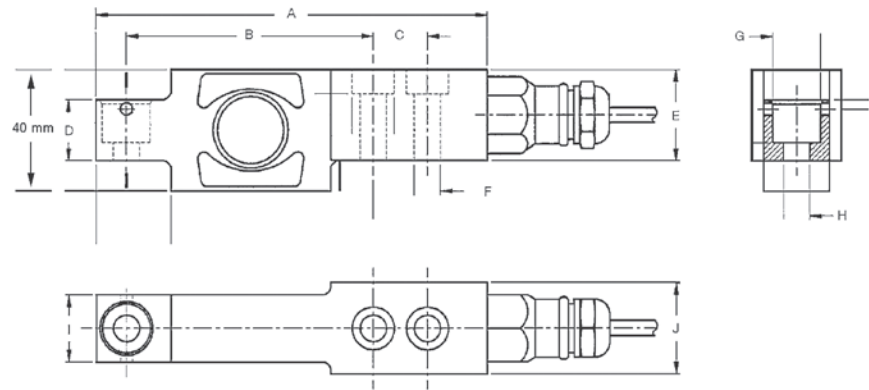


Order Information

Load Rating	Part #	Est. Weight	Price
0.2 kN	41163	3 lb	\$556.00
0.5 kN	41164	3 lb	\$556.00
1 kN	41165	3 lb	\$556.00
2 kN	41166	3 lb	\$556.00

Dimensions

Rated Capacity	A	B	C	D	E	F	G	H	I	J
kN/mm										
0.2 to 2	130.0	82.0	18.0	20.0	30.0	8.7	16.0	8.7	22.0	30.0



Specifications

- Full Scale Output:**
2.0 mV/V
mV/V/ohm calibration
- Output Resistance:**
1,000 (± 2) ohm
- Input Resistance:**
1,100 (± 50) ohm
- Material/Finish:**
Stainless steel
- Temperature:**
Operating range
0 °F to 150 °F (-18 °C to 65 °C)
- Seal Type:**
Hermetically sealed, IP68
- Safe Overload:**
200% full scale
- Safe Sideload:**
100% full scale
- Rated Excitation:**
5 to 10 VDC (15 V maximum)
- Combined Error:**
0.01% full scale
- Insulation Resistance:**
5,000 megohm
- Cable Length:**
10 ft
- Cable Diameter:**
0.196 in
Polyurethane jacket
- Cable Color Code:**
Green +Excitation
Black -Excitation
White +Signal
Red -Signal
Yellow Shield
- Warranty:**
One-year limited
- Approvals:**
FM
OIML

Discontinued
Limited Stock Available



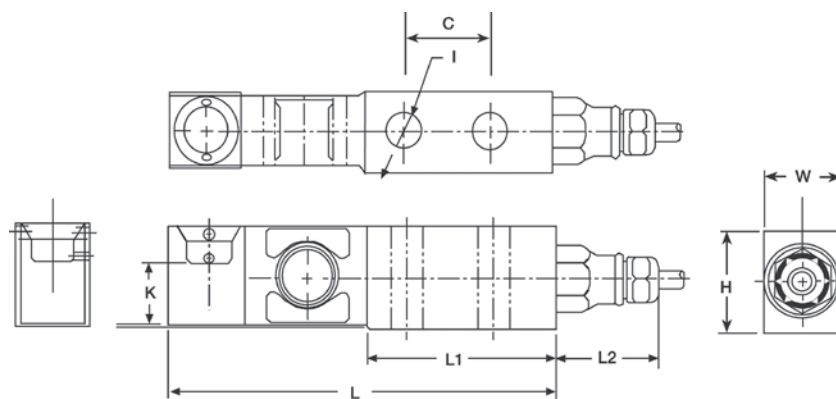
Picture is a representation of actual product.

Dimensions

Rated Capacity	L	L1	L2	H	W	I	K	C
kN/in								
2.3	6.10	2.98	1.60	1.58	0.59	0.54	0.99	1.39

Order Information

Load Rating	Part #	Est. Weight	Price
2.3 kN	38215	4 lb	\$1,075.00
Options			
Conduit adapter, 1/2-14 NPT	17703	1 lb	\$50.00



Weigh Module Available

RICE LAKE WEIGHING SYSTEMS

Paramounts® HE..... page 36

RICE LAKE WEIGHING SYSTEMS

Paramounts® HS..... page 49

Specifications

Full Scale Output:

2.0 mV/V

Output Resistance:

1,000 (± 2) ohm

Input Resistance:

1,100 (± 50) ohm

Material/Finish:

Stainless steel

Temperature:

Operating range
0° F to 150° F (-18° C to 65° C)

Seal Type:

Hermetically sealed, IP69K

Safe Overload:

200% full scale

Safe Sideload:

100% full scale

Rated Excitation:

5-10 VDC (15 V maximum)

Nonlinearity:

0 to -0.03% full scale

Hysteresis:

0 to +0.05% full scale

Insulation Resistance:

10,000 megohms

Deflection at Capacity:

0.008 in

Cable Length:

10 ft

Cable Diameter:

0.196 in polyurethane jacket

Cable Color Code:

Green +Excitation
Black -Excitation
White +Signal
Red -Signal
Yellow Shield

Warranty:

One-year limited warranty

Approvals:

OIML



SB14

Stainless Steel, Hermetically Sealed, NTEP Certified 1:5,000 Class III Multiple Cell, IP69K



Picture is a representation of actual product.

Approvals



Available upon request

Order Information-CU Version*

Load Rating	Part#	Est. Weight	Price
500 lb	41167	3 lb	\$493.00
1,000 lb	41168	3 lb	\$493.00
2,500 lb	41169	3 lb	\$493.00
5,000 lb	41170	3 lb	\$493.00

*CU versions have a counterbore/unified thread 1/2-20UNF

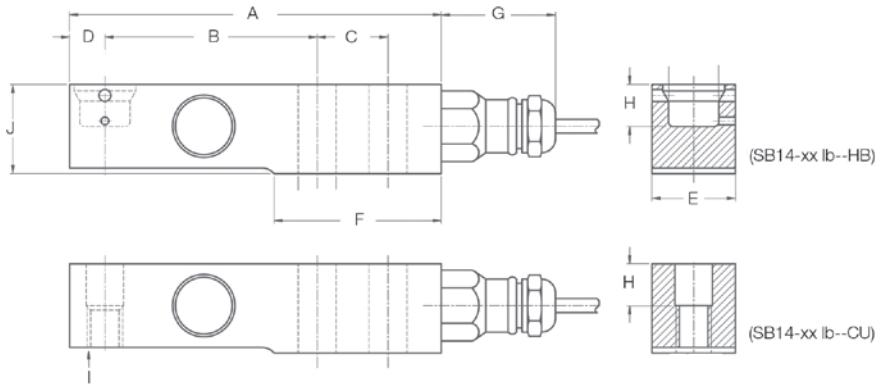
Order Information-HB Version**

Load Rating	Part#	Est. Weight	Price
500 lb	119556	3 lb	\$493.00
1,000 lb	119557	3 lb	\$493.00
2,500 lb	119558	3 lb	\$493.00
5,000 lb	119559	3 lb	\$493.00

**HB versions have a blind load hole

Dimensions

Rated Capacity	A	B	C	D	E	F	G	H	I	J
lb/in										
500-5,000	5.25	3.00	1.00	0.50	1.18	2.35	1.61	0.59	1/2-20 UNF	1.22



Interchangeable Products

FAIRBANKS®
LCF-HR4060-XX

Specifications

- Full Scale Output:**
2.0 mV/V
mV/V/ohm calibration
- Output Resistance:**
1,000 (± 2) ohm
- Input Resistance:**
1,100 (± 50) ohm
- Material/Finish:**
Stainless steel
- Temperature:**
Compensated range
14 °F to 104 °F (-10 °C to 40 °C)
Operating range
0 °F to 150 °F (-18 °C to 65 °C)
- Seal Type:**
Hermetically sealed, IP69K
- Safe Overload:**
200% full scale
- Safe Sideload:**
100% full scale
- Rated Excitation:**
5 to 10 VDC (15 V maximum)
- Insulation Resistance:**
5,000 megohm
- Combined Error:**
± 0.03% full scale
- Cable Length:**
10 ft
- Cable Diameter:**
0.196 in
Polyurethane jacket
- Cable Color Code:**
Green +Excitation
Black -Excitation
White +Signal
Red -Signal
Yellow Shield
- Warranty:**
One-year limited
- Approvals:**
FM
NTEP
OIML (Available upon request)

Stainless Steel, Hermetically Sealed, NTEP Certified 1:10,000 Multiple Cell, OIML C3, IP68



Picture is a representation of actual product.

Approvals



Order Information

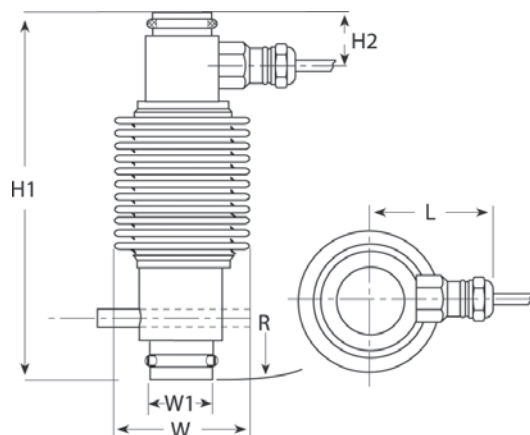
Load Rating	Part #	Est. Weight	Price
250 kN*	36217	8 lb	\$858.00
400 kN	36218	10 lb	\$1,457.00
50,000 lb**	170734	8 lb	\$1,075.00
Accessories			
Conduit adapter, 1/2-14 NPT	17703	1 lb	\$50.00
Load cup**, upper (250 kN only)	71602	—	\$195.00
Load cup**, lower (250 kN only)	44290	—	\$195.00
Anti-rotation pin	214044	—	\$10.00

*For Mettler-Toledo® digital to analog conversion: requires replacement of all system load cells, junction box, and instrumentation; consult factory. Kit on page 88.

**1,000ohm bridge

Dimensions

Rated Capacity	H1	H2	L	R	W	W1
kN/in						
250	7.56	1.22	2.44	10.98	2.83	1.46
400	8.86	1.34	2.72	14.02	3.35	1.46
50,000 lb	7.56	1.22	2.44	10.98	2.83	1.46



Interchangeable Products

FAIRBANKS®

63215 LCF-HR4020-1

FAIRBANKS®

82052

Specifications

Full Scale Output:

2.0 mV/V
mV/V/ohm calibration

Output Resistance:

351 (± 1) ohm
P/N 170734 1,000 (± 2) ohm

Input Resistance:

400 (± 15) ohm
P/N 170734 1,100 (± 50) ohm

Material/Finish:

Stainless steel

Temperature:

Compensated range
14 °F to 104 °F (-10 °C to 40 °C)
Operating range
0 °F to 150 °F (-18 °C to 65 °C)

Seal Type:

Hermetically sealed, IP68

Safe Overload:

200% full scale

Safe Sideload:

100% full scale

Rated Excitation:

5 to 10 VDC (15 V maximum)

Combined Error:

± 0.02% full scale

Insulation Resistance:

5,000 megohm

Cable Length:

250 kN: 35 ft
400 kN: 60 ft
50,000 lb: 15 ft overbraid

Cable Diameter:

0.196 in
Polyurethane jacket

Cable Color Code:

Green +Excitation
Black -Excitation
White +Signal
Red -Signal
Yellow Shield

Warranty:

One-year limited

Approvals:

FM
NTEP
OIML



Picture is a representation of actual product.

Approvals



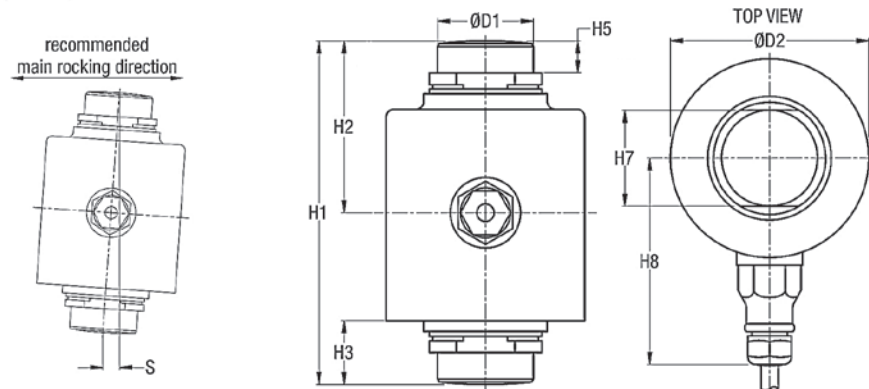
Order Information

Load Rating	Part #	Est. Weight	Price
7.5 t	168944	3 lb	\$795.00
15 t	168946	3 lb	\$795.00
22.5 t	168947	3 lb	\$795.00
30 t	84203	7 lb	\$1,007.00
40 t	84204	9 lb	\$1,007.00
50 t	84205	10 lb	\$1,282.00
Options			
Upper cup (50 t) alloy steel	111365	5 lb	\$195.00
Lower cup (50 t) alloy steel	111366	5 lb	\$195.00
Upper cup (50 t) stainless steel	154107	5 lb	\$181.00
Lower cup (50 t) stainless steel	154106	5 lb	\$181.00

The kits for the RC3 cells are on page 89. Cups 111365 and 111366 are used in kits 129844 and 111367. Cups 154107 and 154106 are used in kits 154347, 154348 and 154349.

Dimensions

Rated Capacity	H1	H2	H3	H5	H7	H8	D1	D2
t/in								
7.5 to 22.5	3.50	1.73	0.67	0.43	1.10	2.95	1.10	2.56
30	5.51	2.76	1.20	0.51	1.55	3.31	1.55	3.19
40	5.91	2.95	1.22	0.51	1.55	3.31	1.55	3.19
50	7.01	3.50	1.26	0.67	1.73	3.71	1.73	3.90



Interchangeable Products

FAIRBANKS®

30 t 70510 LCF-HR4020-2A

Specifications

Full Scale Output:

2.0 mV/V
mV/V/ohm calibration

Output Resistance:

1,000 (± 2) ohm

Input Resistance:

1,150 (± 50) ohm

Material/Finish:

Stainless steel

Temperature:

Compensated range
14 °F to 104 °F (-10 °C to 40 °C)
Operating range
0 °F to 150 °F (-18 °C to 65 °C)

Seal Type:

Hermetically sealed, IP69K

Safe Overload:

200% full scale

Safe Sideload:

200% full scale

Rated Excitation:

5 to 10 VDC (15 V maximum)

Combined Error:

0.02% full scale

Insulation Resistance:

5,000 megohm

Cable Length:

7.5 to 22.5 t: 40 ft
30 to 50 t: 18 m

Cable Diameter:

0.307 in
Polyurethane jacket

Cable Color Code:

Green +Excitation
Black -Excitation
White +Signal
Red -Signal
Yellow Shield

Warranty:

One-year limited

Approvals:

FM
NTEP
OIML



Picture is a representation of actual product.

Approvals

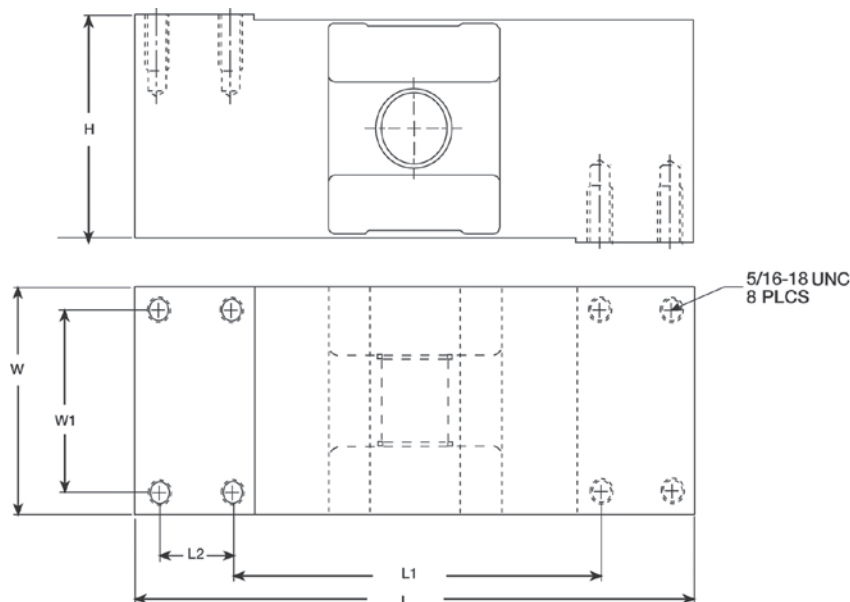


Order Information

Load Rating	Part #	Est. Weight	Price
50 kg	45274	15 lb	\$900.00
100 kg	45275	15 lb	\$900.00
250 kg	45276	15 lb	\$900.00
500 kg	45277	15 lb	\$900.00
1,000 kg	45278	15 lb	\$900.00
Options			
Conduit adapter, 1/2-14 NPT	17703	1 lb	\$50.00

Dimensions

Rated Capacity	L	L1	L2	W	W1	H
kg/mm						
50 to 1,000	190.5	124.8	24.9	74.9	59.9	74.9



Interchangeable Products

RICE LAKE WEIGHING SYSTEMS

RLPWM12..... page 171

RICE LAKE WEIGHING SYSTEMS

RL1250*

VPG TEDEA-HUNTLEIGH®

1250* page 334

* Environmentally sealed

Specifications

Full Scale Output:

2.0 mV/V

Output Resistance:

960 (± 50) ohm

Input Resistance:

1,100 (± 50) ohm

Material/Finish:

Stainless steel

Temperature:

Compensated range

14 °F to 104 °F (-10 °C to 40 °C)

Operating range

0 °F to 150 °F (-18 °C to 65 °C)

Seal Type:

Hermetically sealed, IP69K

Safe Overload:

200% full scale

Safe Sideload:

100% full scale

Rated Excitation:

5 to 10 VDC (20 V maximum)

Combined Error:

0.02% full scale

Insulation Resistance:

5,000 megohm

Deflection at Capacity:

0.015 in

Cable Length:

10 ft

Cable Diameter:

0.196 in

Polyurethane jacket

Cable Color Code:

Green +Excitation

Black -Excitation

White +Signal

Red -Signal

Yellow Shield

Max Platform Size:

39 × 39 in

Warranty:

One-year limited

Approvals:

FM

NTEP

OIML



Picture is a representation of actual product.

Approvals

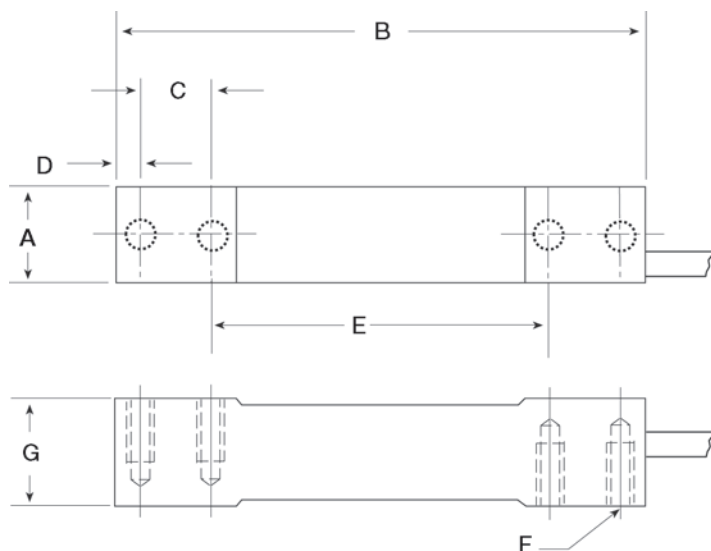


Order Information

Load Rating	Part #	Est. Weight	Price
7 kg	202686	2 lb	\$328.00
10 kg	202687	2 lb	\$328.00
30 kg	202688	2 lb	\$328.00
60 kg	202689	2 lb	\$328.00
100 kg	202690	2 lb	\$328.00
150 kg	202691	2 lb	\$328.00

Dimensions

Rated Capacity	A	B	C	D	E	F	G
kg/mm							
7 to 10	18.2	140.0	19.0	6.4	88.9	1/4-20 UNC	30.0
30 to 60	24.5	140.0	19.0	6.4	88.9	1/4-20 UNC	30.0
100 to 150	30.8	140.0	22.4	7.8	79.3	3/8-16 UNC	30.0



Interchangeable Products

RICE LAKE WEIGHING SYSTEMS

RL1380..... page 176

HBK

PWS..... page 243

Specifications

Full Scale Output:

2 mV/V

Output Resistance:

350 (± 10) ohm

Input Resistance:

385 (± 15) ohm

Material Finish:

Stainless Steel

Temperature Compensation:

Compensated Range

14 °F to 104 °F (-10 °C to 40 °C)

Operating Range

0 °F to 150 °F (-18 °C to 65 °C)

Seal Type:

Environmentally Sealed, IP67

Safe Overload:

150% full scale

Rated Excitation:

5 to 10 VDC

Insulation Resistance:

5,000 megohm

Max Platform Size:

7 to 30 kg: 350 × 350 mm

60 to 150 kg: 450 × 450 mm

Combined Error:

0.02% full scale

Cable Length:

10 ft

Cable Diameter:

0.140 in

Polyurethane jacket

Color Code:

Green +Excitation

Black -Excitation

White +Signal

Red -Signal

Yellow Shield

Warranty:

One-year limited

Approvals:

FM

NTEP

OIML



Picture is a representation of actual product.

Approvals

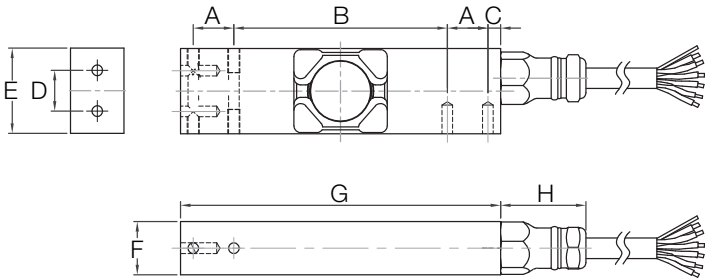


Order Information

Load Rating	Part #	Est. Weight	Price
10 kg	202692	3 lb	\$630.00
20 kg	202693	3 lb	\$630.00
50 kg	202694	3 lb	\$630.00
100 kg	202695	3 lb	\$630.00

Dimensions

Rated Capacity	A	B	C	D	E	F	G	H
kg/mm								
10 to 100	19.0	100.0	6.0	19.1	40.0	25.0	150.0	40.0



Interchangeable Products

RICE LAKE WEIGHING SYSTEMS

RLPWM15HE.....page 165

HBK

PW15AH*page 242

*350 Ohm

Specifications

Full Scale Output:

2 mV/V

Output Resistance:

960 (± 50) ohm

Input Resistance:

1100 (± 50) ohm

Material Finish:

Stainless Steel

Temperature Compensation:

Compensated Range
14 °F to 104 °F (-10 °C to 40 °C)
Operating Range
0 °F to 150 °F (-18 °C to 65 °C)

Seal Type:

Hermetically sealed, IP69K

Safe Overload:

150% full scale

Rated Excitation:

5 to 10 VDC

Insulation Resistance:

> 5,000 megohm

Max Platform Size:

500 × 400 mm

Combined Error:

0.02% full scale

Cable Length:

10 ft

Color Code:

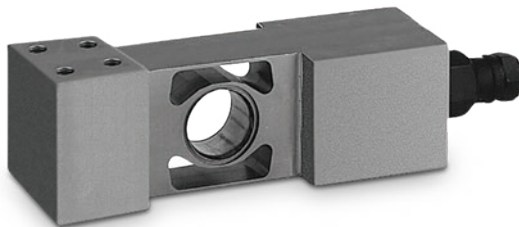
Green +Excitation
Black -Excitation
White +Signal
Red -Signal
Blue +Sense
Brown -Sense
Yellow Shield

Warranty:

One-year limited

Approvals:

FM
NTEP
OIML



Picture is a representation of actual product.

Approvals

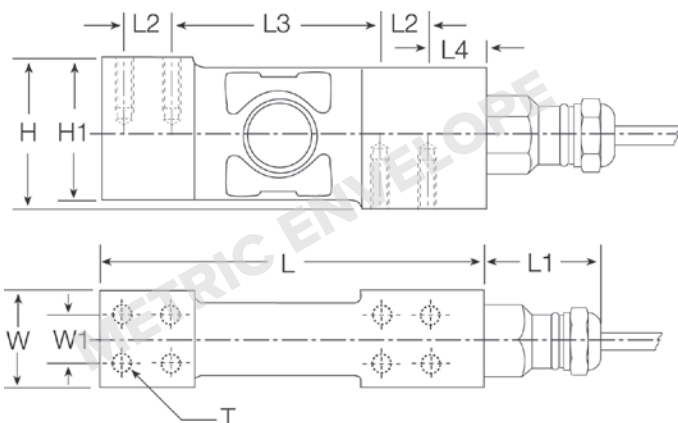


Order Information

Load Rating	Part #	Est. Weight	Price
20 kg	36225	3 lb	\$640.00
50 kg	36226	3 lb	\$640.00
100 kg	36227	3 lb	\$640.00
200 kg	36228	3 lb	\$640.00

Dimensions

Rated Capacity	H	H1	L	L1	L2	L3	L4	W	W1	T
kg/mm										
20 to 200	48.0	45.5	123.0	41.0	15.2	67.6	17.8	30.1	15.2	8 × M6/15 DP



Interchangeable Products

RICE LAKE WEIGHING SYSTEMS

RLPC6 page 164

Specifications

Full Scale Output:

2.0 mV/V

Output Resistance:

960 (± 50) ohm

Input Resistance:

1,100 (± 50) ohm

Material/Finish:

Stainless steel

Temperature:

Compensated range

14 °F to 104 °F (-10 °C to 40 °C)

Operating range

0 °F to 150 °F (-18 °C to 65 °C)

Seal Type:

Hermetically sealed, IP69K

Safe Overload:

200% full scale

Safe Sideload:

100% full scale

Rated Excitation:

5 to 10 VDC (15 V maximum)

Combined Error:

0.02% full scale

Insulation Resistance:

5,000 megohm

Cable Length:

3 m

Cable Color Code:

Green +Excitation

Black -Excitation

White +Signal

Red -Signal

Yellow Shield

Max Platform Size:

24 × 24 in

Warranty:

One-year limited

Approvals:

FM

NTEP

OIML



Picture is a representation of actual product.

Approvals

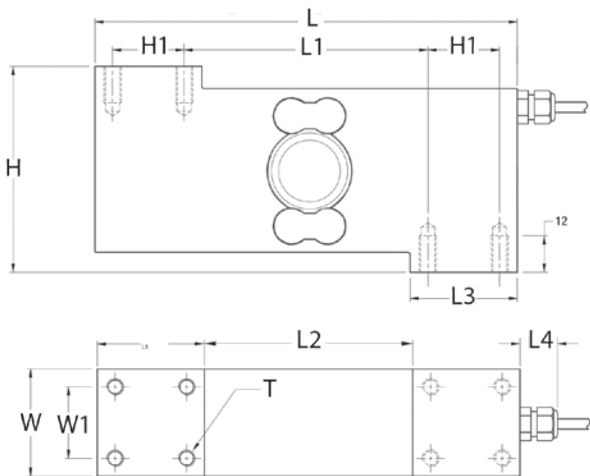


Order Information

Load Rating	Part #	Est. Weight	Price
100 kg	161719	6 lb	\$742.00
250 kg	161720	6 lb	\$742.00
500 kg	161721	6 lb	\$742.00

Dimensions

Rated Capacity	H	H1	L	L1	L2	L3	L4	W	W1	T
kg/in										
100 to 500	2.88	1.00	5.91	3.41	2.92	1.50	0.63	1.50	1.00	M8



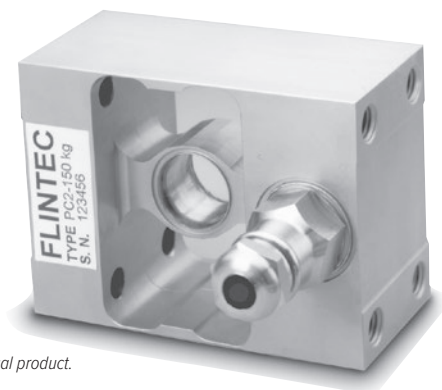
Interchangeable Products

VPG TEDEA-HUNTLEIGH®
1510..... page 336

Specifications

- Full Scale Output:**
2 mV/V ±5%
- Output Resistance:**
350 (± 10) ohm
- Input Resistance:**
380 (± 20) ohm
- Material/Finish:**
Stainless steel construction with electro-polished finish
- Temperature:**
Operating range
0 °F to 150 °F (-18 °C to 65 °C)
- Seal Type:**
Hermetically sealed, IP69K
- Safe Overload:**
150% full scale
- Rated Excitation:**
5 to 15 VDC
- Insulation Resistance:**
5,000 megohm
- Max Platform Size:**
Up to 600 × 600 mm
- Cable Length:**
3 m
- Cable Color Code:**
Green +Excitation
Black -Excitation
White +Signal
Red -Signal
Blue +Sense
Brown -Sense
Yellow Shield
- Warranty:**
One-year limited
- Approvals:**
OIML

FLINTEC



Picture is a representation of actual product.

Approvals

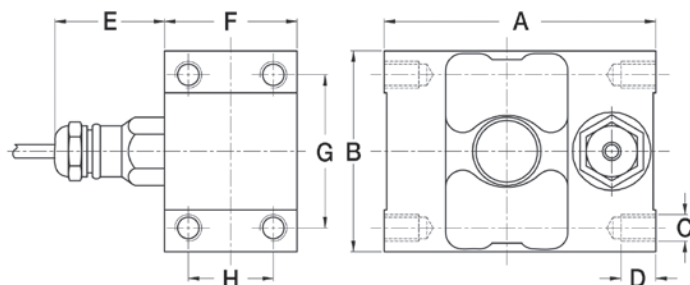


Order Information

Load Rating	Part #	Est. Weight	Price
150 kg	41176	2lb	\$1,160.00

Dimensions

Rated Capacity	A	B	C	D	E	F	G	H
kg/mm								
150	101.6	75.0	M10	13.0	41.0	49.5	57.2	31.8



Specifications

Full Scale Output:

2.0 mV/V

Output Resistance:

960 (± 50) ohm

Input Resistance:

1,100 (± 50) ohm

Material/Finish:

Stainless steel

Temperature:

Operating range
0 °F to 150 °F (-18 °C to 65 °C)

Seal Type:

Hermetically sealed, IP68

Safe Overload:

200% full scale

Safe Sideload:

100% full scale

Rated Excitation:

5 to 10 VDC (15 V maximum)

Insulation Resistance:

5,000 megohm

Combined Error:

0.02% full scale

Cable Length:

10 ft

Cable Diameter:

0.196 in
Polyurethane jacket

Cable Color Code:

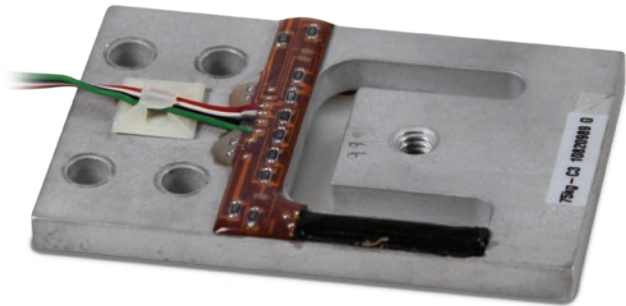
Green +Excitation
Black -Excitation
White +Signal
Red -Signal
Blue +Sense
Brown -Sense
Yellow Shield

Warranty:

One-year limited

Approvals:

FM

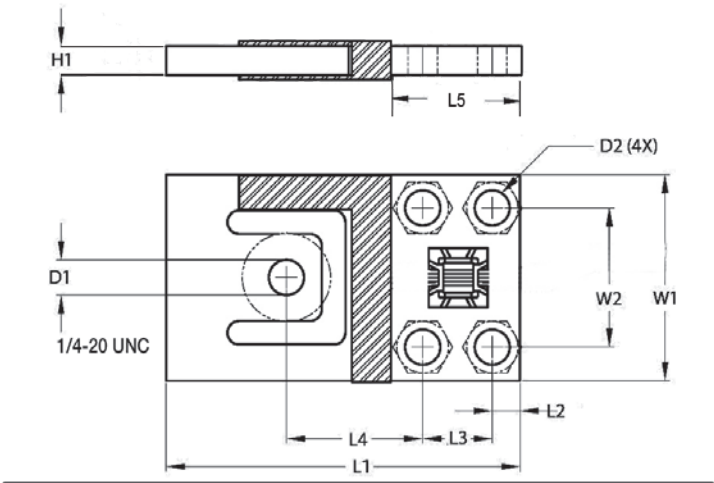


Order Information

Load Rating	Part #	Est. Weight	Price
15 kg	96361	1 lb	\$85.00
37.5 kg	96362	1 lb	\$90.00
75 kg	96363	1 lb	\$96.00
150 kg	96364	1 lb	\$108.00

Dimensions

Rated Capacity	L1	L2	L3	L4	L5	W1	W2	H1	D1	D2	Deflection (mm) at E max
kg/mm											
15	70.0	4.9	14.0	28.0	23.7	39.0	27.8	4.1	7.6	5.1	0.3
37.5	76.2	6.0	15.0	29.3	27.0	44.5	30.0	4.8	7.6	6.6	0.4
75	84.4	6.4	15.0	34.0	27.7	54.8	30.0	6.4	7.6	6.6	0.4
150	107.3	7.8	22.9	45.9	38.4	69.9	44.5	7.9	9.1	8.1	0.6



Interchangeable Products

RICE LAKE WEIGHING SYSTEMS
RLBLPpage 184

Specifications

- Full Scale Output:**
1 mV/V
mV/V/ohm calibration
- Output Resistance:**
1,000 (± 10) ohm
- Input Resistance:**
1,180 (± 50) ohm
- Material/Finish:**
Aluminum
- Temperature:**
Operating range
0 °F to 150 °F (-18 °C to 65 °C)
- Seal Type:**
Environmentally sealed, IP65
- Safe Overload:**
150% full scale
- Rated Excitation:**
5 to 10 VDC
- Combined Error:**
0.060% full scale
- Insulation Resistance:**
5,000 megohm
- Cable Length:**
1.5 m
- Cable Color Code:**
Green +Excitation
Black -Excitation
White +Signal
Red -Signal
Yellow Shield
- Warranty:**
One-year limited