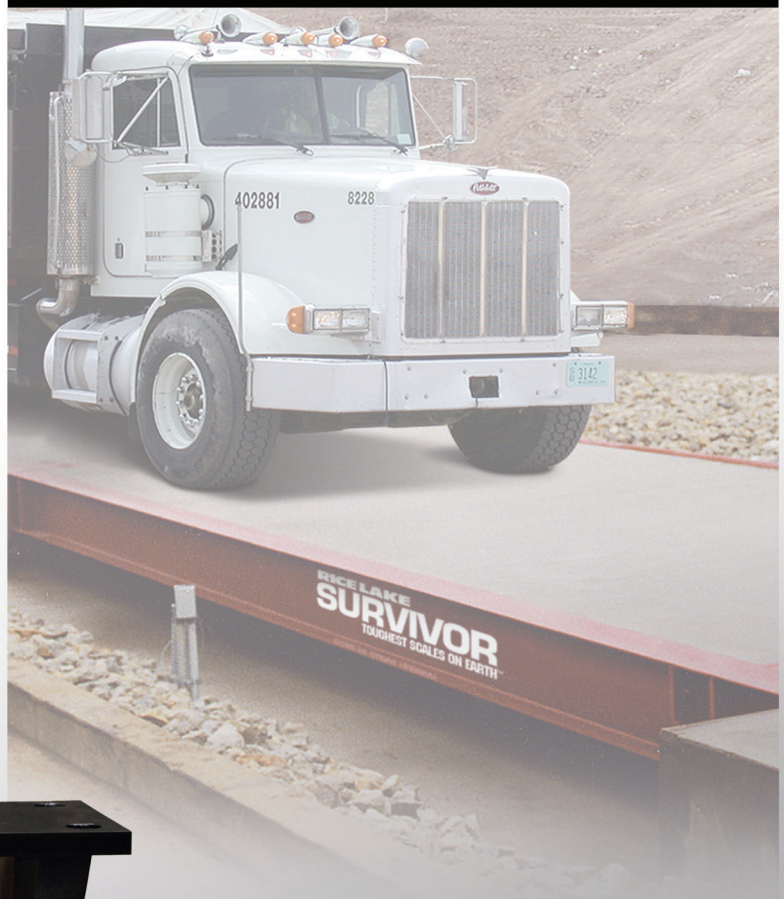


# MTS

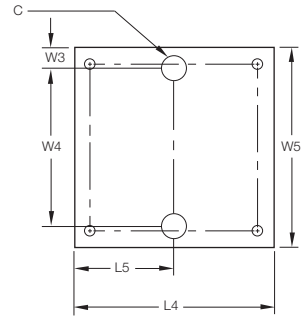
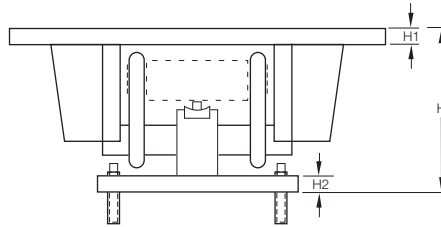
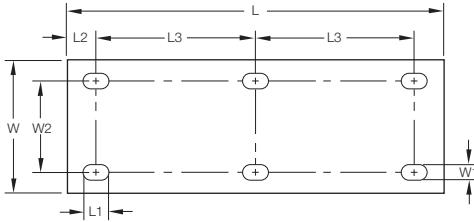
CONVERSION KIT



**RICE LAKE**<sup>®</sup>  
WEIGHING SYSTEMS

[www.ricelake.com](http://www.ricelake.com)

# MTS CONVERSION KIT



## Load Cell Rated Capacity

## Dimensions - Inches (Millimeters)

		C	H*	H1	H2	L	L1	L2	L3	L4	L5	W	W1	W2	W3	W4**	W5
RL75223	50,000-65,000-100,000lb (22,679.6-29,483.5-45,400.00 kg)	1.50 (38.1)	12.93 (328.4)	1.00 (25.4)	1.00 (25.4)	22.50 (571.5)	1.50 (37.5)	1.75 (44.5)	9.50 (241.3)	11.75 (298.5)	5.88 (149.4)	7.75 (196.9)	.91 (23.1)	5.25 (133.4)	1.25 (31.8)	9.25 (235.0)	11.75 (298.45)
RL75040A	25,00-40,00lb (11,339.8-18,143.7 kg)	1.50 (38.1)	9.88 (251.0)	1.00 (25.4)	1.00 (25.4)	18.50 (469.9)	1.50 (37.5)	1.75 (44.5)	7.50 (190.5)	11.75 (298.5)	5.88 (149.4)	7.75 (196.9)	.91 (23.1)	5.25 (133.4)	1.25 (31.8)	9.25 (235.0)	11.75 (298.45)
RL75040A	50,000-60,000-75,000lb (22,679.6-27,215.34,019.4 kg)	1.50 (38.1)	12.82 (325.6)	1.00 (25.4)	1.00 (25.4)	22.50 (571.5)	1.50 (37.5)	1.75 (44.5)	9.50 (241.3)	11.75 (298.5)	5.88 (149.4)	7.75 (196.9)	.91 (23.1)	5.25 (133.4)	1.25 (31.8)	9.25 (235.0)	11.75 (298.45)

\* Custom heights available; consult factory

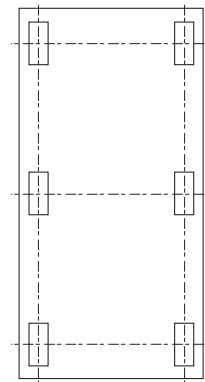
\*\* Custom hole spacing for existing bolt patterns available; consult factory

## Full electronic performance can be achieved at a fraction of the cost of a new scale and pit.

The Motor Truck Scale Electronic Conversion Kit is designed to transform an existing scale pit and weighbridge into a fully electronic vehicle scale. Designed for quick installation without removing the platform or reconfiguring the pit, the conversion kit can often be installed in a matter of days — minimizing downtime. Ease of installation is important when considering installations where it is not feasible to completely remove the existing scale. Consult your local Weights & Measures Authorities for local Legal-for-Trade applications.

### Standard Features

- Capacities (per assembly): 25,000 lb to 100,000 lb
- Converts existing scale capacities of 40,000 lb to 300,000 lb
- Cost- and time-efficient installation; no need to remove weighbridge
- Kit includes 4, 6, or 8 Translink™ heavy-capacity mounting assemblies for 2-, 3-, or 4-section conversions
- Free movement in all directions of the horizontal plane with virtually no friction
- Completely self-centering
- Load cells are NTEP-Certified 1:10,000 divisions, Class III
- Requires no check rods
- Uses 3mV/V output load cells
- RL75040A (RL75223 load cells standard in 300K kit)



### 6-Mount Arrangement

# Mounts	Scale Capacity	Part #
4-Mount Kit	40,000 lb (18,143.7 kg)	30513
4-Mount Kit	60,000 lb (27,215.6 kg)	30514
6-Mount Kit	100,000 lb (45,359.4 kg)	30515
6-Mount Kit	120,000 lb (54,431.2 kg)	30516
8-Mount Kit	120,000 lb (54,431.2 kg)	30517
8-Mount Kit	200,000 lb (90,718.7 kg)	30518
8-Mount Kit	300,000 lb SD (163,078.1 kg)	30512

### Options/Accessories

- Customized mount heights available
- Sensortronics 65040A load cells
- RTI 5223 load cells

Your Rice Lake Weighing Systems distributor is:



230 W. Coleman St. • Rice Lake, WI 54868 • USA  
TEL: 715-234-9171 • FAX: 715-234-6967 • [www.ricelake.com](http://www.ricelake.com)

An ISO 9001 registered company © 2017 Rice Lake Weighing Systems PN 32878 1/17  
Specifications subject to change without notice