

# SCT-4X SCT-1SX SCT-1PX

HIGH-SPEED WEIGHT TRANSMITTERS  
WITH INTEGRATED WEB SERVER



**RICE LAKE**<sup>®</sup>  
WEIGHING SYSTEMS

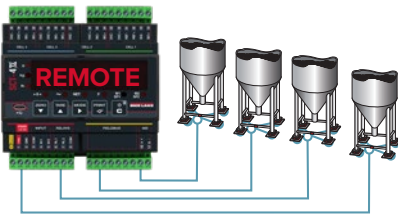
800-472-6703  
[www.ricelake.com](http://www.ricelake.com)

# A Leap in Speed

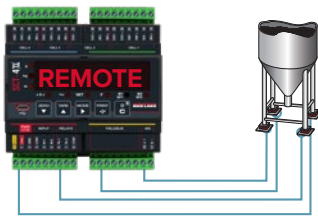
SCT-4X, SCT-1SX and SCT-1PX digital weight transmitters are high-speed solutions designed for reliable performance in a variety of applications, including belt scales, micro-dosing and multiscale systems. Serial ports, USB and built-in fieldbus make Rice Lake's SCT-X Series ideal for automated weighing.

## SCT-4X

The SCT-4X can manage up to four load cells or four scales, and processes up to 2,600 weight readings per second for a single-channel system. When managing four load cells, the SCT-4X acts as a junction box to equalize the signals.



Manage Four Scales



Manage Four Load Cells

## SCT-1SX

The SCT-1SX can process up to 4,800 weight readings per second for a single scale channel. The customizable weight filter supports a reliable and accurate weight signal without sacrificing high speed.



Removable Terminal Blocks  
Simplify Wiring

## SCT-1PX

The SCT-1PX is able to process up to 4,800 weight readings per second for a single scale channel. As a panel mount, the SCT-1PX features two programmable digital inputs and up to two digital outputs.



## Calibration modes

1

Electronic adjustment without calibration weight

2

Adjustment using calibration weights by keyboard

3

Adjustment using calibration weights via serial port with Rice Lake Tools

4

Digital equalization mode by keyboard (SCT-4X only)

5

Remote adjustment via Modbus/Fieldbus commands

6

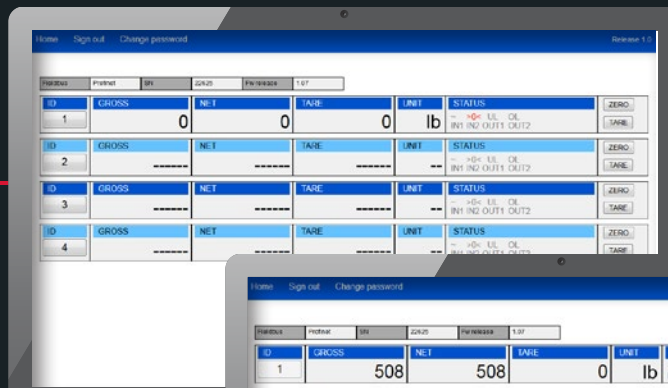
Pre-adjustment (linearization) of the weighing circuit with Rice Lake Tools

# Integrated Web Server

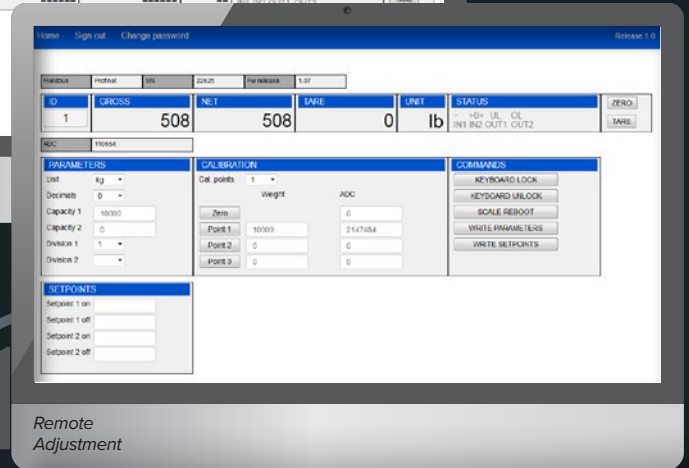
The integrated web server allows operators to remotely monitor, calibrate and configure the fieldbus models of SCT-4X and SCT-1SX.

## Communication Options

- ASCII
- Modbus RTU
- Modbus TCP
- PROFINET
- EtherNet/IP



Diagnostic Menu



Remote Adjustment



## XSPED TOOL



### Custom Filtering for Maximum Speed

With optional XSPED Tool software for PCs, operators can customize weighing filters to optimize speed and accuracy for static and in-motion systems. The oscilloscope function allows operators to analyze system diagnostics and select the best filtering mode.

### Ensure System Performance

- Intuitive graphical interface with easy-to-understand charts and graphs
- Straightforward menus for intuitive navigation and access to data
- Identify mechanical disturbances and vibrations

# SCT-4X SCT-1SX SCT-1PX

## HIGH-SPEED WEIGHT TRANSMITTERS WITH INTEGRATED WEB SERVER

### SPECIFICATIONS

SCT-4X		SCT-1SX	SCT-1PX
Power:	12 to 24 VDC	12 to 24 VDC	12 to 24 VDC
Power Consumption:	5W	5W	5W
Analog Signal Input Range:	± 39 mV	± 39 mV	± 39 mV
Analog Signal Sensitivity:	High resolution 0.01 µV/d Legal for Trade 0.3 µV/e	High resolution 0.01 µV/d Legal for Trade 0.3 µV/e	High resolution 0.01 µV/d Legal for Trade 0.3 µV/e
A/D Sample Rate:	24-bit A/D Single-channel mode - up to 2600 conv/sec Four-channel mode - up to 100 conv/sec	24-bit A/D Single-channel mode - up to 4800 Hz	24-bit A/D Single-channel mode - up to 4800 Hz
<b>Resolution</b>			
Internal:	Up to 4,000,000 counts	Up to 4,000,000 counts	Up to 4,000,000 counts
Display:	Up to 800,000 d for internal use EN45501:2015 approved: Up to 10,000e NTEP, MC	Up to 800,000 d for internal use EN45501:2015 approved: Up to 10,000e	Up to 800,000 d for internal use EN45501:2015 approved: Up to 10,000e NTEP, MC
<b>Digital I/O</b>			
Inputs:	Two inputs: 12-24 VDC	Two inputs: 12-24 VDC	Two inputs: 12-24 VDC
Outputs:	Two outputs: 500 mA, up to 48 VAC or 60 VDC	Four outputs: 500 mA, up to 48 VAC or 60 VDC	Two outputs*: 500 mA, up to 48 VAC or 60 VDC
Communication Ports:	Analog version	1 Micro-USB port (device) for PC configuration RS-485, RS-232	1 Micro-USB port (device) for PC configuration RS-485
	Fieldbus version	1 Micro-USB port (device) for PC configuration RS-485 EtherNet/IP™, PROFINET IO or Modbus TCP	1 Micro-USB port (device) for PC configuration EtherNet/IP™, PROFINET IO or Modbus TCP
<b>Analog Output (if equipped):</b>			
	Opt. isolated, 16-bit 0-20mA, 4-20mA (Maximum 350 ohm) 0-5 VDC, 0-10 VDC (Minimum 10,000 ohm)	Opt. isolated, 16-bit 0-20mA, 4-20mA (Maximum 350 ohm) 0-5 VDC, 0-10 VDC (Minimum 10,000 ohm)	Opt. isolated, 16-bit 0-20mA, 4-20mA (Maximum 350 ohm) 0-5 VDC, 0-10 VDC (Minimum 10,000 ohm)
Annunciators:	Nine LEDs	Six LEDs	Nine LEDs
Display:	Six-digit 0.56 in (14.2 mm) red LED	Six-digit 0.31 in (8 mm) red LED	Six-digit 0.56 in (14.2 mm) red LED
Keys/Buttons:	Five keys for Zero, Tare, Function modes, manual data printing/sending, ON/Standby	Five keys for Zero, Tare, Function modes, manual data printing/sending, ON/Standby	Five keys for Zero, Tare, Function modes, manual data printing/sending, ON/Standby
Dimensions:	(L × W × H) 4.17 x 2.20 x 4.64 in (106 x 56 x 118 mm)	(L × W × H) 4.72 x 0.90 x 4.00 in (120 x 23 x 112 mm)	(L × W × H) 3.94 x 2.09 x 5.35 in (100 x 53 x 136 mm) Panel cutout (L × H): 3.62 x 1.76 in (92 x 44 mm)
Temperature & Humidity:	Certified: 14 °F to 104 °F (-10 °C to 40 °C) Operating: -4 °F to 140 °F (-20 °C to 60 °C)	Certified: 14 °F to 104 °F (-10 °C to 40 °C) Operating: -4 °F to 140 °F (-20 °C to 60 °C)	Certified: 14 °F to 104 °F (-10 °C to 40 °C) Operating: -4 °F to 140 °F (-20 °C to 60 °C)
Humidity:	80% RH, non-condensing	80% RH, non-condensing	85% RH, non-condensing
Rating/ Material:	ABS, for DIN rail	ABS, for DIN rail	Case: Aluminium IP65
Weight:	1 lb (0.5 kg)	1 lb (0.5 kg)	0.5 lb (0.23 kg)
Warranty:	One-year limited	One-year limited	One-year limited
Approvals:	EN 45501:2015 NTEP, MC UL-R	EN 45501:2015 NTEP, MC UL-R	EN 45501:2015 NTEP, MC UL-R

\* (up to six with option for analog version only)

### STANDARD FEATURES

- Integrated web server allows complete diagnostics, calibration and remote configuration (Not available on analog output version)
- Real-time warning of any faults or disconnections of the load cell (SCT-1SX and SCT-1PX models only)
- Configuration and calibration through Rice Lake Tools, XSPEED software or display navigation
- Power supply circuit with protections against overloads, polarity reversal and short circuits, specific for industrial environments
- Micro USB communication & configuration port accessible from display for quick programming, diagnostics and data backup
- Onboard RS-485 communication port (SCT-1SX analog models only)
- All data and adjustments of each scale are available through integrated fieldbus with up to 120 updates per second
- Removable terminal blocks to simplify wiring in the electrical panel
- Modbus RTU protocol integrated, up to 110 updates per second