

# ASTM Specialty Calibration Weights

## Applications:

Tolerance test or checking

Equipment verification in  
unique units of measurement

Slotted weights for suspended  
verification of weight

Forklift weights for forklift scale calibration

## Designs Available:

Cube

Ring

Lift truck weights

Hook weights

Stainless steel slotted weights

## Unique Units of Measure:

Pennyweight

Grain

Troy ounce

## Features:

Nominal value marked on weights

Cavity for adjustment

Cube weight sets designed as sealer's kits  
for calibration adjustments





*Metric Cube and Ring Weights;  
Avoirdupois Ring Weights*

**118** Range: 5 lb – 25 g

*Troy Ounce*

**119** Range: 500 oz t – 0.005 oz t

*Pennyweight Cylindrical and Leaf,  
and Grain Weights*

**120** Range: 20 dwt – 20 gr

*Cube Weights Sets*

**121** Range: 1 kg – 1 mg

*Avoirdupois and Metric  
Single Hook Weights*

**122** Range: 25 kg – 1/32 oz

*Avoirdupois/Metric Single  
Hangers/Slotted Weights*

**123** Range: 5 lb – 100 g

*Lift Truck Weights and Clean Room Cart*

**124** Range: 50 kg - 2,000 lb

## SPECIALTY CALIBRATION WEIGHTS / METRIC CUBE AND RING WEIGHTS; AVOIRDUPOIS RING WEIGHTS

## RANGE: 5 lb – 25 g

## Class 5

## Cube

Weight	Part #	Length	Width	Height	Price
2 lb	12649	1 in (25 mm)	2.4 in (61 mm)	3 in (76 mm)	\$175.00
1 lb	12651	1 in (25 mm)	1.2 in (31 mm)	3 in (76 mm)	\$160.00
8 oz	12653	1 in (25 mm)	1-9/10 in (48 mm)	1 in (25 mm)	\$140.00
2 oz	12658	0.60 in (15 mm)	0.70 in (18 mm)	1 in (25 mm)	\$98.00
4 oz	12655	1 in (25 mm)	0.98 in (19 mm)	1.3 in (33 mm)	\$120.00
1 kg	12557	3-3/8 in (87 mm)	1 in (25 mm)	2-1/2 in (63 mm)	\$175.00
500 g	12552	3-13/32 in (87 mm)	1 in (25 mm)	1-1/4 in (32 mm)	\$140.00
300 g	12547	1-1/4 in (32 mm)	2-1/32 in (52 mm)	1 in (25 mm)	\$130.00
200 g	12544	1-3/8 in (35 mm)	1-1/4 in (31 mm)	1 in (25 mm)	\$120.00
100 g	12541	1-7/32 in (31 mm)	3/4 in (19 mm)	1 in (25 mm)	\$98.00

## Optional Certificate

Accredited
\$99.75
\$99.75
\$99.75
\$99.75
\$99.75
\$99.75
\$99.75
\$99.75
\$99.75
\$99.75
\$99.75
\$99.75
\$99.75
\$99.75
\$99.75

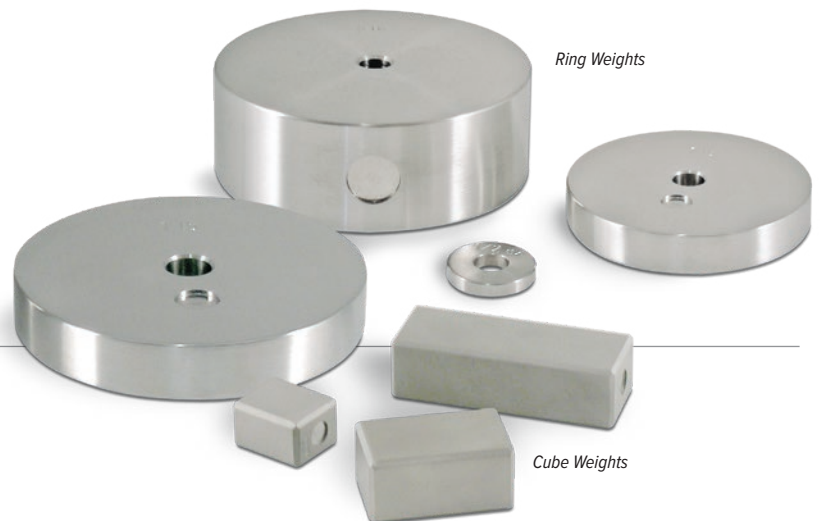
## Class 5

## Ring

Weight	Part #	Outside Dia.	Inside Dia.	Height	Price
500 g	12566	3 in (76 mm)	25/64 in (10 mm)	37/64 in (15 mm)	\$150.00
200 g	12563	2 in (51 mm)	25/64 in (10 mm)	17/32 in (14 mm)	\$125.00
100 g	12561	1-1/2 in (38 mm)	25/64 in (10 mm)	1/2 in (13 mm)	\$98.00
50 g	12560	1-1/2 in (38 mm)	25/64 in (10 mm)	1/4 in (6 mm)	\$83.00
25 g	12559	1 in (25 mm)	25/64 in (10 mm)	5/16 in (8 mm)	\$66.00
5 lb	12672	4 in (102 mm)	25/64 in (10 mm)	1-7/16 in (37 mm)	\$135.00
3 lb	12671	3 in (76 mm)	25/64 in (10 mm)	1-35/64 in (36 mm)	\$105.00
2 lb	12670	3 in (76 mm)	25/64 in (10 mm)	1-1/32 in (26 mm)	\$83.00
1 lb	12669	3 in (76 mm)	25/64 in (10 mm)	33/64 in (13 mm)	\$83.00
8 oz	12668	2 in (51 mm)	25/64 in (10 mm)	39/64 in (16 mm)	\$40.50
4 oz	12667	1-1/2 in (38 mm)	25/64 in (10 mm)	9/16 in (14 mm)	\$40.50
2 oz	12666	1-1/2 in (38 mm)	25/64 in (10 mm)	9/32 in (7 mm)	\$40.50
1 oz	12665	1 in (25 mm)	25/64 in (10 mm)	11/32 in (9 mm)	\$40.50
1/2 oz	12664	1 in (25 mm)	25/64 in (10 mm)	11/64 in (4 mm)	\$77.00
1/4 oz	12663	1 in (25 mm)	25/64 in (10 mm)	3/32 in (2 mm)	\$105.00

## Optional Certificate

Accredited
\$57.75
\$57.75
\$99.75
\$42.00
\$42.00
\$84.00
\$84.00
\$68.25
\$68.25
\$42.00
\$42.00
\$42.00
\$42.00
\$42.00
\$42.00
\$42.00



Ring Weights

Cube Weights

## Accessories

Description	Part #	Price
Statement of Accuracy	36092	\$47.50
Serial number	25836	\$17.00

**SPECIALTY CALIBRATION WEIGHTS / TROY OUNCE CYLINDRICAL AND LEAF WEIGHTS**

**RANGE: 500 oz t – 0.005 oz t**

**Class 5**  
Cylindrical

Weight	Part #	Height	Diameter	Price
500 oz t	12719	6-5/16 in (160 mm)	5 in (127 mm)	\$1,260.00
200 oz t	12718	3-3/4 in (95 mm)	4-25/32 in (121 mm)	\$555.00
100 oz t	12717	3-13/16 in (96 mm)	3 in (75 mm)	\$335.00
50 oz t	12716	2-5/8 in (67 mm)	2-21/32 in (68 mm)	\$195.00
20 oz t	12715	2-1/4 in (57 mm)	1-3/4 in (44 mm)	\$98.00
10 oz t	12714	1-3/8 in (35 mm)	1-29/32 in (48 mm)	\$78.00
5 oz t	12713	1-3/16 in (30 mm)	1-13/32 in (36 mm)	\$78.00
2 oz t	12712	7/8 in (22 mm)	31/32 in (25 mm)	\$45.50
1 oz t	12711	7/8 in (21 mm)	5/8 in (16 mm)	\$42.00
1/4 oz t	12709	11/16 in (17 mm)	3/8 in (9 mm)	\$51.00
1/8 oz t	12708	5/16 in (8 mm)	15/32 in (12 mm)	\$51.00
1/16 oz t	12707	3/8 in (9 mm)	1/4 in (6 mm)	\$51.00
1/32 oz t	12706	5/16 in (8 mm)	3/16 in (5 mm)	\$51.00
0.5 oz t	12705	1/2 in (13 mm)	23/32 in (18 mm)	\$51.00
0.2 oz t	12704	1/2 in (13 mm)	3/8 in (9 mm)	\$51.00
0.1 oz t	12703	5/16 in (8 mm)	13/32 in (10 mm)	\$51.00
0.05 oz t	12702	1/4 in (6 mm)	11/32 in (9 mm)	\$51.00

**Optional Certificate**

Accredited
\$84.00
\$84.00
\$84.00
\$84.00
\$68.25
\$42.00
\$42.00
\$42.00
\$42.00
\$42.00
\$42.00
\$42.00
\$42.00
\$42.00
\$42.00
\$42.00
\$42.00

**Class 5**  
Leaf

Weight	Part #	Height	Diameter	Price
0.02 oz t	12701	W x L (0.375 in x 0.287 in)	-	\$39.50
0.01 oz t	12700	W x L (0.312 in x 0.270 in)	-	\$39.50
0.005 oz t	12699	W x L (0.25 in x 0.22 in)	-	\$39.50

**Optional Certificate**

Accredited
\$42.00
\$42.00
\$42.00



Cylindrical Weight

**Accessories**

Description	Part #	Price
Statement of Accuracy	36092	\$47.50
Serial number	25836	\$17.00

ASTM  
PRECISION

OIML  
PRECISION

BALANCE  
CALIBRATION

STAINLESS  
FIELD WEIGHTS

CAST IRON  
FIELD WEIGHTS

SPECIALTY

ACCESSORIES

## SPECIALTY CALIBRATION WEIGHTS / PENNYWEIGHT CYLINDRICAL AND LEAF, AND GRAIN WEIGHTS

RANGE: 20 dwt – 20 gr

**Class 5**  
Cylindrical

## Optional Certificate

Weight	Part #	Price	Accredited
20 dwt	12698	\$83.00	\$42.00
10 dwt	12697	\$83.00	\$42.00
5 dwt	12696	\$83.00	\$42.00
2 dwt	12695	\$83.00	\$42.00
1 dwt	12694	\$83.00	\$42.00

**Class 5**  
Leaf

## Optional Certificate

Weight	Part #	Price	Accredited
0.5 dwt	12693	\$74.00	\$42.00
0.2 dwt	12692	\$74.00	\$42.00
0.1 dwt	12691	\$74.00	\$42.00

**Class 5**  
Grain

## Optional Certificate

Weight	Part #	Price	Accredited
1 gr	12726	\$28.00	\$42.00
2 gr	12727	\$31.50	\$42.00
5 gr	12730	\$31.50	\$42.00
10 gr	12733	\$31.50	\$42.00
20 gr	12736	\$39.50	\$42.00



Pennyweight Leaf Weight



Cylindrical

**Accessories**

Description	Part #	Price
Statement of Accuracy	36092	\$47.50
Serial number	25836	\$17.00

**SPECIALTY CALIBRATION WEIGHTS / AVOIRDUPOIS AND METRIC CUBE WEIGHT SETS**

**RANGE: 1kg – 1mg**

**Class 5**

Cube Avoirdupois

**Optional Certificate**

Set Size	Part #	Price	Accredited
8 oz - 1/16 oz	<b>12630</b>	\$360.00	\$241.50
(3) 2 lb - 1/16 oz	<b>12652</b>	\$1,050.00	\$399.00
(3) 2 lb - .001 lb	<b>12659</b>	\$1,190.00	\$477.75
(14) 2 lb - 1/16 oz	<b>12585</b>	\$1,730.00	\$966.00

**Class 5**

Cube Metric

**Optional Certificate**

Set Size	Part #	Price	Accredited
300 g - 10 g	<b>12545</b>	\$365.00	\$294.00
(14) 1 kg - 1 mg	<b>12553*</b>	\$2,400.00	\$1,048.95
(3) 1 kg - 1 mg	<b>12555*</b>	\$1,500.00	\$677.25

**Weight Set Contents**

8 oz - 1/16 oz	2 lb - 1/16 oz	2 lb - 0.001lb	2 lb - 1/16 oz
12630	12652	12659	12585
1 - 8 oz*	3 - 2lb*	3 - 2lb*	14 - 2lb*
1 - 4 oz*	1 - 1 lb*	1 - 1 lb*	2 - 1 lb*
1 - 2 oz*	1 - 8 oz*	1 - 0.3lb	1 - 8 oz*
1 - 1 oz	1 - 4 oz*	1 - 0.2lb	1 - 4 oz*
1 - 1/2 oz	1 - 2 oz*	1 - 0.1lb	1 - 2 oz*
1 - 1/4 oz	1 - 1 oz	1 - 0.05 lb	1 - 1 oz
1 - 1/8 oz	1 - 1/2 oz	1 - 0.03 lb	1 - 1/2 oz
2 - 1/16 oz	1 - 1/4 oz	1 - 0.02 lb	1 - 1/4 oz
	1 - 1/8 oz	1 - 0.01 lb	1 - 1/8 oz
	2 - 1/16 oz	1 - 0.005 lb	2 - 1/16 oz
		1 - 0.003 lb	
		1 - 0.002 lb	
		2 - 001 lb	
<b>9 pcs.</b> 1lb set wt.	<b>13 pcs.</b> 8lb set wt.	<b>16 pcs.</b> 7.72lb set wt.	<b>25 pcs.</b> 31lb set wt.

300 g - 10 g	1 kg - 1 mg	1 kg - 1 mg
12545	12553	12555
-	14 - 1 kg*	3 - 1 kg*
-	2 - 500 g*	1 - 500 g*
1 - 300 g*	1 - 300 g*	1 - 300 g*
1 - 200 g*	1 - 200 g*	1 - 200 g*
1 - 100 g*	1 - 100 g*	1 - 100 g*
1 - 50 g	1 - 50 g	1 - 50 g
1 - 30 g	1 - 30 g	1 - 30 g
1 - 20 g	1 - 20 g	1 - 20 g
1 - 10 g	1 - 10 g	1 - 10 g
1 - 5 g	1 - 5 g	1 - 5 g
1 - 3 g	1 - 3 g	1 - 3 g
1 - 2 g	1 - 2 g	1 - 2 g
1 - 1 g	1 - 1 g	1 - 1 g
1 - 500 mg	1 - 500 mg	1 - 500 mg
1 - 300 mg	1 - 300 mg	1 - 300 mg
1 - 200 mg	1 - 200 mg	1 - 200 mg
1 - 100 mg	1 - 100 mg	1 - 100 mg
1 - 50 mg	1 - 50 mg	1 - 50 mg
1 - 30 mg	1 - 30 mg	1 - 30 mg
1 - 20 mg	1 - 20 mg	1 - 20 mg
1 - 10 mg	1 - 10 mg	1 - 10 mg
	1 - 5 mg	1 - 5 mg
	1 - 3 mg	1 - 3 mg
	1 - 2 mg	1 - 2 mg
	1 - 1 mg	1 - 1 mg
<b>7 pcs.</b> 710g set wt.	<b>39 pcs</b> 15,722.221g set wt.	<b>27 pcs.</b> 4,222.221g set wt.

\*Cube Weight

ASTM  
PRECISION

OIML  
PRECISION

BALANCE  
CALIBRATION

STAINLESS  
FIELD WEIGHTS

CAST IRON  
FIELD WEIGHTS

SPECIALTY

ACCESSORIES

**Replacement Cases**

Cube Avoirdupois Main Cases		
Class 5		
Set Size	Part #	Price
8 oz - 1/16 oz	<b>11510</b>	\$39.50
(3) 2 lb - 1/16 oz	<b>11569</b>	\$240.00
(3) 2 lb - .001 lb	<b>11569</b>	\$240.00
(14) 2 lb - 1/16 oz	<b>40783</b>	\$380.00

Cube Metric Main Cases		
Class 5		
Size	Part #	Price
300 g - 10 g	<b>11510</b>	\$39.50
(14) 1 kg - 1 mg	<b>40783</b>	\$380.00
(3) 1 kg - 1 mg	<b>11569</b>	\$240.00

Inserts		
Class 5		
Size	Part #	Price
300 g - 10 g	<b>11526</b>	\$42.00
5 g - 1 mg	<b>11527</b>	\$39.50
(2) 50 g - 1 mg	<b>11528</b>	\$42.00
1 kg - 1 mg	<b>11526</b>	\$42.00
(3) 1 kg - 1 mg	<b>11526</b>	\$42.00

**Accessories**

Description	Part #	Price
Statement of Accuracy	<b>36092</b>	\$47.50
Leaf weight cover	<b>11758</b>	\$45.50
Tweezer	<b>65640</b>	\$22.25
Serial number	<b>25836</b>	\$17.00
Premium tweezer	<b>152414</b>	\$45.50

ASTM  
PRECISIONOIML  
PRECISIONBALANCE  
CALIBRATIONSTAINLESS  
FIELD WEIGHTSCAST IRON  
FIELD WEIGHTS

SPECIALTY

ACCESSORIES

## SPECIALTY CALIBRATION WEIGHTS / AVOIRDUPOIS AND METRIC SINGLE HOOK WEIGHTS

RANGE: 25 kg – 1/32 oz

## Class 6

Hook Metric

Weight	Part #	Diameter	Hanging Height	Opening Diameter	Price
25 kg	12720	5-31/32 in (152 mm)	9-3/16 in (233 mm)	1/4 in (6 mm)	\$995.00
20 kg	12725	5-31/32 in (152 mm)	8-3/8 in (213 mm)	1/4 in (6 mm)	\$975.00
10 kg	12732	4 in (102 mm)	9-1/16 in (230 mm)	1/4 in (6 mm)	\$670.00
5 kg	12735	3-3/4 in (95 mm)	6-11/32 in (161 mm)	1/4 in (6 mm)	\$335.00
4 kg	161608	3-1/2 in (89 mm)	6.12 in (155 mm)	1/4 in (6 mm)	\$330.00
3 kg	96403	2-5/8 in (67 mm)	5-1/16 in (129 mm)	1/4 in (6 mm)	\$310.00
2 kg	12739	2-5/8 in (67 mm)	5-17/32 in (136 mm)	1/4 in (6 mm)	\$240.00
1 kg	12744	2 in (51 mm)	5-3/8 in (137 mm)	1/4 in (6 mm)	\$135.00
500 g	12747	1-5/8 in (41 mm)	4-1/2 in (114 mm)	5/32 in (4 mm)	\$115.00
300 g	96404	1-1/4 in (32 mm)	4-1/2 in (114 mm)	5/32 in (4 mm)	\$115.00
200 g	12748	1-1/8 in (29 mm)	3 in (76 mm)	3/32 in (2 mm)	\$115.00
100 g	12749	1 in (25 mm)	2-3/8 in (60 mm)	3/32 in (2 mm)	\$98.00
50 g	12750	3/4 in (19 mm)	2-1/4 in (57 mm)	3/32 in (2 mm)	\$98.00
30 g	96405	5/8 in (16 mm)	2-1/8 in (54 mm)	3/32 in (2 mm)	\$98.00
20 g	12751	5/8 in (16 mm)	2-1/8 in (54 mm)	3/32 in (2 mm)	\$98.00
10 g	12754	1/2 in (13 mm)	2 in (50.8 mm)	3/32 in (2 mm)	\$72.00

## Optional Certificate

Accredited
\$78.75
\$78.75
\$78.75
\$78.75
\$78.75
\$78.75
\$78.75
\$57.75
\$57.75
\$57.75
\$42.00
\$42.00
\$42.00
\$42.00
\$42.00
\$42.00
\$42.00

## Hook Only

Weight	Part #	Diameter	Hanging Height	Opening Diameter	Price
5 g	12757	1/8 in (3 mm)	2-5/32 in (55 mm)	3/16 in (5 mm)	\$66.00
3 g	96406	3/32 in (2 mm)	2.32 in (59 mm)	3/16 in (5 mm)	\$54.00
2 g	12762	3/32 in (2 mm)	1-7/32 in (31 mm)	3/16 in (5 mm)	\$57.00
1 g	12766	1/16 in (2 mm)	1-21/32 in (42 mm)	3/16 in (5 mm)	\$57.00

## Optional Certificate

Accredited
\$42.00
\$42.00
\$42.00
\$42.00

## Class 6

Hook Avoirdupois

Weight	Part #	Diameter	Hanging Height	Opening Diameter	Price
50 lb	12894	5-31/32 in (152 mm)	9-1/4 in (235 mm)	1/4 in (6 mm)	\$995.00
25 lb	96408	4-19/32 in (117 mm)	5-3/4 in (146 mm)	1/4 in (6 mm)	\$900.00
20 lb	12895	4 in (102 mm)	9-3/16 in (233 mm)	1/4 in (6 mm)	\$650.00
10 lb	12896	3-1/2 in (89 mm)	6-1/4 in (159 mm)	1/4 in (6 mm)	\$330.00
5 lb	12897	2-5/8 in (67 mm)	6-1/2 in (165 mm)	1/4 in (6 mm)	\$230.00
3 lb	96409	2-1/4 in (57 mm)	4-1/32 in (102 mm)	1/4 in (6 mm)	\$210.00
2 lb	12898	2 in (51 mm)	5 in (127 mm)	1/4 in (6 mm)	\$135.00
1 lb	12899	1-5/8 in (41 mm)	4-1/2 in (114 mm)	5/32 in (4 mm)	\$98.00
0.2 lb	96410	1 in (25 mm)	2-5/16 in (59 mm)	3/32 in (2 mm)	\$83.00
0.1 lb	96411	3/4 in (19 mm)	2-5/32 in (55 mm)	3/32 in (2 mm)	\$83.00
8 oz	12900	1-1/4 in (32 mm)	4 in (102 mm)	5/32 in (4 mm)	\$83.00
4 oz	12901	1 in (25 mm)	2-1/4 in (57 mm)	3/32 in (2 mm)	\$83.00
2 oz	12902	13/16 in (21 mm)	2-1/4 in (57 mm)	3/32 in (2 mm)	\$83.00
1 oz	12903	5/8 in (16 mm)	2-1/4 in (57 mm)	3/32 in (2 mm)	\$83.00
1/2 oz	12904	17/32 in (14 mm)	2-29/32 in (74 mm)	3/32 in (2 mm)	\$77.00

## Optional Certificate

Accredited
\$84.00
\$84.00
\$84.00
\$84.00
\$84.00
\$84.00
\$84.00
\$68.25
\$68.25
\$42.00
\$42.00
\$42.00
\$42.00
\$42.00
\$42.00
\$42.00
\$42.00

## Hook Only

Weight	Part #	Diameter	Hanging Height	Opening Diameter	Price
1/4 oz	12905	5/32 in (4 mm)	1-13/16 in (46 mm)	3/16 in (5 mm)	\$57.00
1/8 oz	12906	1/8 in (3 mm)	1-1/8 in (27 mm)	3/16 in (5 mm)	\$57.00
1/16 oz	12907	3/32 in (2 mm)	1-1/4 in (32 mm)	3/16 in (5 mm)	\$57.00
1/32 oz	12908	1/16 in (2 mm)	1-13/32 in (36 mm)	3/16 in (5 mm)	\$57.00

## Optional Certificate

Accredited
\$42.00
\$42.00
\$42.00
\$42.00



Hook (only) Weight (5g - 1g) and (1/4-1/32 oz)

## Accessories

Description	Part #	Price
Statement of Accuracy	36092	\$47.50
Serial number	25836	\$17.00



Hook Weights

# SPECIALTY CALIBRATION WEIGHTS / AVOIRDUPOIS AND METRIC SINGLE HANGERS/SLOTTED WEIGHTS

## RANGE: 5 lb – 100 g

### Class 7

Stainless Steel Hanger

Weight	Part #	Length	Diameter	Total Cap	Price
5 lb	<b>12846</b>	37 1/4 in	4 in (102 mm)	500 lb	\$350.00
3 kg	<b>156937</b>	38 3/16 in	4 in (102 mm)	250 kg	\$330.00

### Optional Certificate

Accredited
\$84.00
\$78.75

### Class 5

Slotted Avoirdupois

Weight	Part #	Diameter	Height	Slot Width	Price
10 lb	<b>12589</b>	4 in (102 mm)	3-1/8 in (79 mm)	1/2 in (13 mm)	\$630.00
5 lb	<b>12586</b>	4 in (102 mm)	1-9/16 in (40 mm)	1/2 in (13 mm)	\$395.00
2 lb	<b>12577</b>	3 in (76 mm)	1-9/64 in (29 mm)	1/2 in (13 mm)	\$250.00
1 lb	<b>12574</b>	3 in (76 mm)	19/32 in (15 mm)	1/2 in (13 mm)	\$210.00
8 oz	<b>12583</b>	2 in (51 mm)	45/64 in (18 mm)	1/2 in (13 mm)	\$185.00
4 oz	<b>12580</b>	1-1/2 in (38 mm)	11/16 in (18 mm)	1/2 in (13 mm)	\$145.00

### Optional Certificate

Accredited
\$84.00
\$84.00
\$68.25
\$68.25
\$42.00
\$42.00

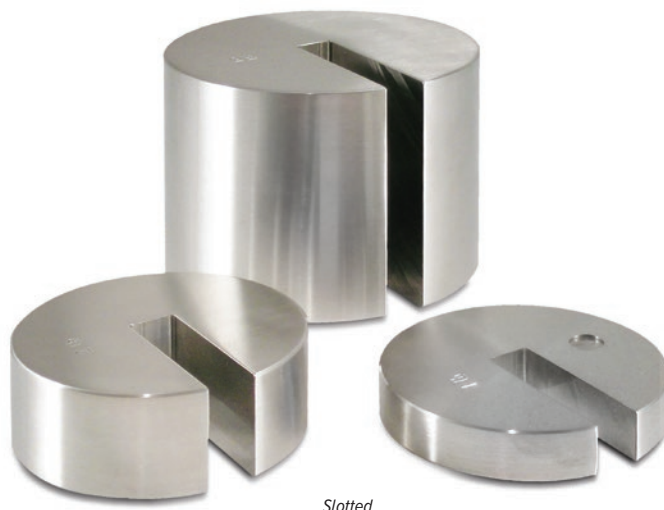
### Class 5

Slotted Metric

Weight	Part #	Diameter	Height	Slot Width	Price
5 kg	<b>156931</b>	4 in (102 mm)	3-1/8 in (79 mm)	1/2 in (13 mm)	\$585.00
2 kg	<b>156932</b>	4 in (102 mm)	1-9/16 in (40 mm)	1/2 in (13 mm)	\$405.00
1 kg	<b>156933</b>	3 in (76 mm)	1.27 in (32 mm)	1/2 in (13 mm)	\$240.00
500 g	<b>156934</b>	3 in (76 mm)	0.836 in (21 mm)	1/2 in (13 mm)	\$220.00
200 g	<b>156935</b>	1-1/2 in (38 mm)	0.801 in (20 mm)	1/2 in (13 mm)	\$180.00
100 g	<b>156936</b>	1-1/2 in (38 mm)	0.601 in (15 mm)	1/2 in (13 mm)	\$120.00

### Optional Certificate

Accredited
\$78.75
\$78.75
\$57.75
\$57.75
\$57.75
\$42.00



Slotted

## Accessories

Description	Part #	Price
Statement of Accuracy	<b>36092</b>	\$47.50
Serial number	<b>25836</b>	\$17.00

ASTM  
PRECISION

OIML  
PRECISION

BALANCE  
CALIBRATION

STAINLESS  
FIELD WEIGHTS

CAST IRON  
FIELD WEIGHTS

SPECIALTY

ACCESSORIES

## SPECIALTY CALIBRATION WEIGHTS / LIFT TRUCK WEIGHTS AND CLEAN ROOM CART

RANGE: 50 kg – 2,000 lb

## Painted Steel Lift Truck Weights

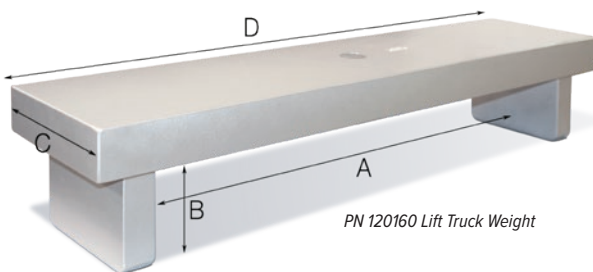
## Class 6

## Optional Certificate

Weight	Part #	Price	Accredited
1,000 lb	120160	\$3,300.00	\$246.75
2,000 lb	120162	\$7,500.00	\$246.75

## Dimensions

PN 120160		PN 120162	
A	38.25 in	A	34.25 in
B	6.0 in	B	6.0 in
C	22.5 in	C	22.5 in
D	46.25 in	D	46.25 in



## Stainless Steel Clean Room Weight Cart

## Class 6

## Optional Certificate

Weight	Part #	Description	Price	Accredited
50 kg	178045	16 × 16 in	\$5,025.00	\$235.00
100 kg	180033	16 × 16 in	\$5,650.00	\$235.00
125 kg	184463	16 × 16 in	\$6,275.00	\$235.00
150 kg	184464	16 × 16 in	\$6,700.00	\$235.00
175 kg	184465	18 × 18 in	\$7,025.00	\$235.00
200 kg	180624	16 × 16 in	\$7,025.00	\$235.00
250 kg	180625	18 × 18 in	\$8,900.00	\$235.00
500 kg	180034	18 × 18 in	\$15,850.00	\$235.00

*\*Do not stack weights on carts.*

*Clean Room, Weigh Cart  
(Calibration Optional)*



