

Interface

TABLE OF CONTENTS

COMPRESSION DISK

Page 270 **1200, ALLOY STEEL/ALUMINUM**



The 1200 Series' compact design permits smaller, more compact testing machines, portability and allows for weighing systems of substantially smaller dimensions. Resistance to extraneous forces produces high fatigue life, permits less stringent mounting alignment and reduces the possibility of reading errors. Capacities range from 1,000 lb to 100,000 lb. Complete with 10 ft of load cell cable.

Page 271 **3200, STAINLESS STEEL**



The 3200 Series' stainless steel load cells are designed specifically for difficult applications in harsh environments. These units incorporate welded stainless steel diaphragms to resist corrosion and to seal against moisture intrusion. These load cells provide high accuracy, resistance to off-center loads with minimum error, excellent temperature specifications and low height envelope for ease of installation. Capacities range from 5,000 lb to 100,000 lb. Complete with 20 ft of load cell cable.

TENSION/COMPRESSION

Page 272 **SML, LOW HEIGHT**



A low height load cell designed for tension and compression. Constructed of anodized aluminum 5 lb to 300 lb or stainless steel 500 lb to 2,000 lb with 5 ft of integral cable.

Page 273 **WMC, STAINLESS STEEL, ROD END**



The WMC rod end load cell is constructed of stainless steel, environmentally sealed and designed for tension or compression. Capacities range from 15,000 lb to 200,000 lb.

Page 274 **WMC MINIATURE SEALED, STAINLESS STEEL**



The WMC Miniature Sealed load cell completes the WMC line with this low capacity, low profile load cell with 5 ft of integral cable.

1200 Series

Low-Profile Alloy Steel/Aluminum, Environmentally Sealed, IP67



Picture is a representation of Model 1211

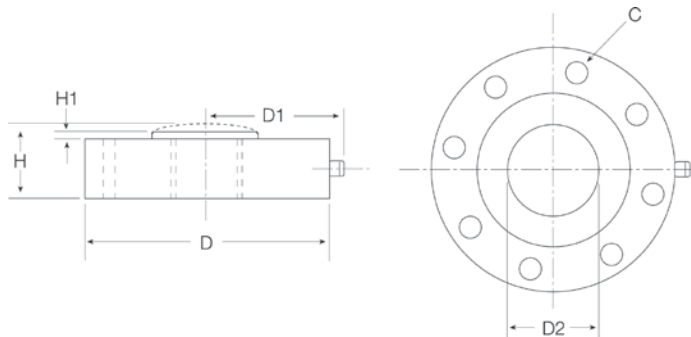
Dimensions

Rated Capacity lb/in	C	D	D1	D2	H	H1
1,000-10,000	0.28 dia 8 holes	4.12	2.63	1.34	1.37	0.12
25,000-50,000	0.34 dia 4 holes	4.75	2.95	1.57	1.75	0.12
100,000	0.47 dia 12 holes	7.50	4.32	3.12	2.25	0.25

Order Information

Load Rating	Part #	Est. Weight	Price
Aluminum			
1,000 lb	36132	4 lb	\$1,282.00
2,000 lb	36133	4 lb	\$1,282.00
Alloy Steel			
5,000 lb	36134	5 lb	\$1,405.00
10,000 lb	36135	5 lb	\$1,405.00
25,000 lb	36136	8 lb	\$1,563.00
50,000 lb	36137	8 lb	\$1,563.00
100,000 lb	36138	22 lb	\$2,465.00

Consult factory for load cell bases



Specifications

Full Scale Output:

1,000-2,000 lb = 2.0 mV/V
5,000-100,000 lb = 4.0 mV/V

Bridge Resistance:

350 ohms, nominal

Material/Finish:

1,000-2,000 lb (aluminum)
5,000-100,000 lb (alloy steel)

Temperature:

Operating range
0°F to 150°F (-18°C to 65°C)

Seal Type:

Environmentally sealed, IP67

Safe Overload:

150% full scale

Rated Excitation:

5-10 VDC (20 V maximum)

Nonlinearity:

0.05% full scale

Hysteresis:

0.02-0.04% full scale

Insulation Resistance:

5,000 megohms

Cable Length:

10 ft

Cable Color Code:

Red +Excitation
Black -Excitation
Green +Signal
White -Signal

Warranty:

Two-year limited warranty

Specifications

Full Scale Output:

4.0 mV/V

Bridge Resistance:

350 ohms, nominal

Material/Finish:

Stainless steel

Temperature:
Operating range
0°F to 150°F (-18°C to 65°C)
Seal Type:

Hermetically sealed, IP66/68

Safe Overload:

150% full scale

Rated Excitation:

5-10 VDC (20 V maximum)

Nonlinearity:

0.05% full scale

Hysteresis:

0.04% full scale

Insulation Resistance:

5,000 megohms

Cable Length:

20ft

Cable Color Code:
Red +Excitation
Black -Excitation
Green +Signal
White -Signal
Warranty:

Two-year limited warranty



Dimensions

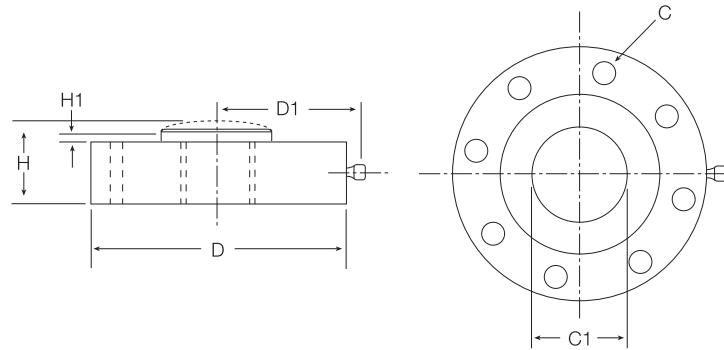
Picture is a representation of Model 3211

Rated Capacity lb/in	C	C1	D	D1	H	H1
5,000-10,000	0.28 dia 8 holes	1.34	4.12	2.56	1.37	0.12
25,000-50,000	0.34 dia 4 holes	1.57	4.75	2.87	1.75	0.12
100,000	0.47 dia 12 holes	3.12	7.50	4.25	2.25	0.25

Order Information

Load Rating	Part #	Est. Weight	Price
5,000 lb	36140	5 lb	\$1,600.00
10,000 lb	36141	5 lb	\$1,600.00
25,000 lb	36142	8 lb	\$1,813.00
50,000 lb	36143	8 lb	\$1,813.00
100,000 lb	36144	10 lb	\$3,090.00

Consult factory for load cell bases



SML

Low-height, Aluminum / Stainless Steel



Dimensions

Picture is a representation of actual product

Rated Capacity	A	B	C	D	E	F	G	H	I
lb/in									
5-10	1.80	0.52	0.73	0.90	10-32 UNF .20 deep	0.34	0.13	0.29	0.50
25-100	2.00	0.64	0.73	1.00	1/4-28 UNF .25 deep	0.46	0.13	0.38	0.50
200-1,000	2.12	0.89	0.98	1.06	3/8-24 UNF .38 deep	0.71	0.13	0.46	0.57
2,000	2.80	1.16	1.24	1.40	1/2-20 UNF .49 deep	1.00	0.13	0.75	0.77

Order Information

Load Rating	Part #	Est. Weight	Price
5 lb	185097	1lb	\$843.00
10 lb	185098	1lb	\$843.00
25 lb	185099	1lb	\$630.00
50 lb	185100	1lb	\$630.00
100 lb	185101	1lb	\$630.00
200 lb	185102	1lb	\$630.00
300 lb	185103	1lb	\$630.00
500 lb	185104	1lb	\$630.00
1,000 lb	185105	1lb	\$843.00
2,000 lb	185106	1lb	\$843.00

Specifications

Full Scale Output:

2.0 mV/V

Bridge Resistance:

350 ohms, nominal

Material/Finish:

5-300 lb - Aluminum

500-2,000 lb - Stainless steel

Temperature:

Operating range

-65°F to 200°F (-54°C to 93°C)

Safe Overload:

5-10 lb: 800%

25-2,000 lb: 150%

Rated Excitation:

15 VDC Max

Nonlinearity:

5-300 lb ± 0.05% full scale

500-1,000 lb ± 0.10% full scale

2,000 ± 0.20% full scale

Hysteresis:

5-300 lb ± 0.05% full scale

500-1,000 lb ± 0.10% full scale

2,000 ± 0.20% full scale

Insulation Resistance:

> 5,000 megohms

Cable Length:

5 ft

Cable Color Code:

Red +Excitation

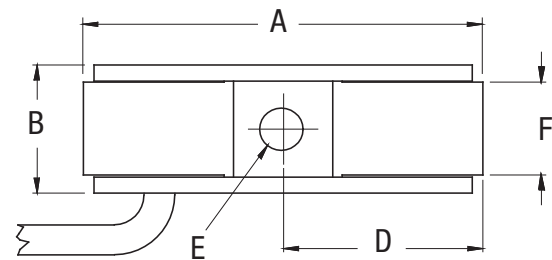
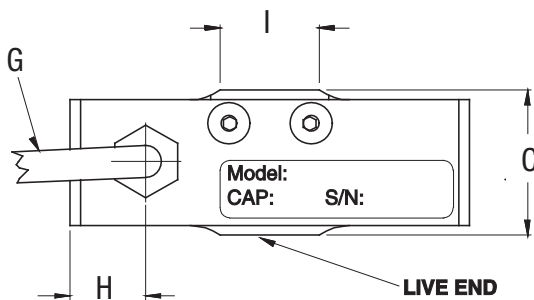
Black -Excitation

White +Signal

Green -Signal

Warranty:

One-year limited warranty



Specifications

Full Scale Output:
2.0 mV/V

Bridge Resistance:
350 ohms, nominal

Material/Finish:
Stainless steel

Temperature:
Operating range
-65°F to 250°F (-54°C to 121°C)

Safe Overload:
150% full scale

Rated Excitation:
15 VDC Max

Nonlinearity:
15-30 K ± 0.10% full scale
100 K ± 0.15% full scale
200 K ± 0.20% full scale

Hysteresis:
± 0.15% full scale

Insulation Resistance:
> 5,000 megohms

Connector Pin Out:
A +Excitation
B +Sense
C -Excitation
D -Sense
E -Signal
F +Signal

Warranty:
One-year limited warranty



Dimensions

Picture is a representation of actual product

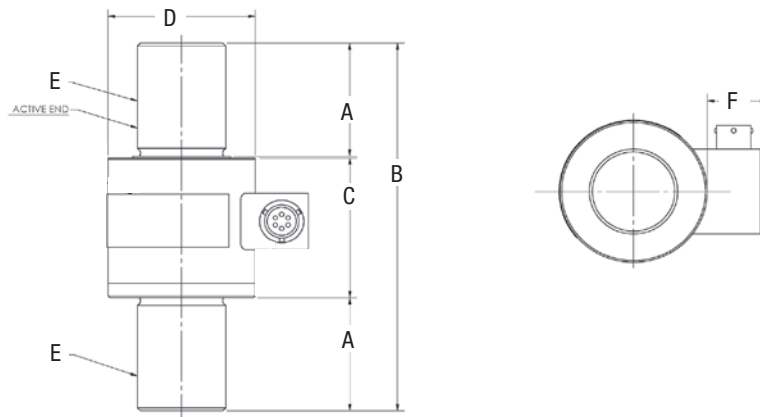
Rated Capacity	A	B	C	D	E	F
lb/in						
15,000-50,000	2.00	6.50	2.47	2.50	1.5-12 UNF	1.01
100,000	3.00	10.00	3.97	3.50	2.50-12 UNF	1.28
200,000	4.00	13.00	4.97	4.47	3.50-8 UNF	1.36

Order Information

Load Rating	Part #	Est. Weight	Price
15,000 lb	185079	5 lb	\$2,040.00
20,000 lb	185080	5 lb	\$2,040.00
30,000 lb	185081	5 lb	\$2,040.00
50,000 lb	185583	5 lb	\$2,040.00
100,000 lb	185082	20 lb	\$3,705.00
200,000 lb	185083	40 lb	\$4,400.00

Load Cell Cable Option

	Part #	Est. Weight	Price
10 ft cable with PTO6A-10-6S (SR) connector	185459	2 lb	\$250.00



TENSION/COMPRESSION

WMC Miniature Sealed

Stainless Steel

INTERFACE



Specifications

Full Scale Output:
2.0 mV/V

Bridge Resistance:
350 ohms, nominal

Material/Finish:
Stainless steel

Temperature:
Operating range
-65°F to 250°F (-54°C to 121°C)

Safe Overload:
150% full scale

Rated Excitation:
12 VDC

Nonlinearity:
5-500 lb ± 0.15% full scale
1 K-10K ± 0.20% full scale

Hysteresis:
5-500 lb ± 0.15% full scale
1-10 K ± 0.20% full scale

Insulation Resistance:
> 5,000 megohms

Cable Length:
5 ft

Cable Color Code:
Red +Excitation
Black -Excitation
White +Signal
Green -Signal

Warranty:
One-year limited warranty

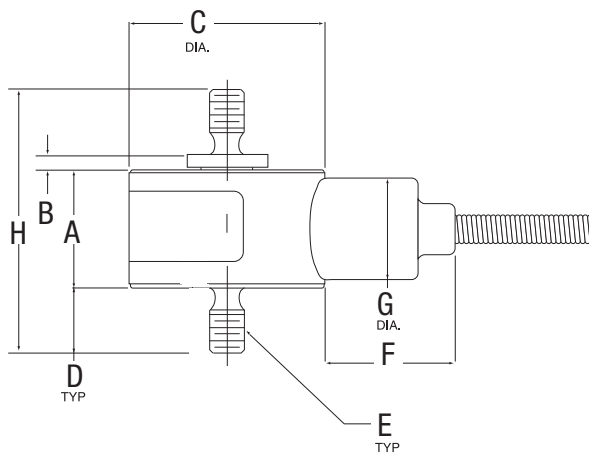
Dimensions

Picture is a representation of actual product

Rated Capacity	A	B	C	D	E	F	G	H
lb/in								
5-10	0.45	0.06	0.75	0.25	6-32 UNC	0.50	0.39	1.01
25-100	0.52	0.03	1.00	0.25	10-32 UNF	0.50	0.39	1.05
250-500	0.53	0.03	1.00	0.38	1/4-28 UNF	0.50	0.39	1.32
1,000	0.53	0.03	1.00	0.38	0.25-28 UNF	0.50	0.39	1.32
2,000-3,000	0.72	0.03	1.00	0.50	0.38-24 UNF	0.50	0.39	1.75
5,000	0.94	0.03	1.25	0.63	0.50-20 UNF	0.50	0.39	2.23
7,500-10,000	1.09	0.03	1.38	0.88	0.75-16 UNF	0.50	0.39	2.88

Order Information

Load Rating	Part #	Est. Weight	Price
5 lb	185090	1lb	\$1,373.00
10 lb	185091	1lb	\$1,373.00
25 lb	185092	1lb	\$1,267.00
50 lb	185093	1lb	\$1,267.00
100 lb	185094	1lb	\$1,267.00
250 lb	185095	1lb	\$1,267.00
500 lb	185096	1lb	\$1,267.00
1,000 lb	185084	1lb	\$1,267.00
2,000 lb	185085	1lb	\$1,373.00
3,000 lb	185086	1lb	\$1,373.00
5,000 lb	185087	1lb	\$1,373.00
7,500 lb	185088	1lb	\$1,373.00
10,000 lb	185089	1lb	\$1,373.00



www.ricelake.com | Phone: 800-472-6703

Interface