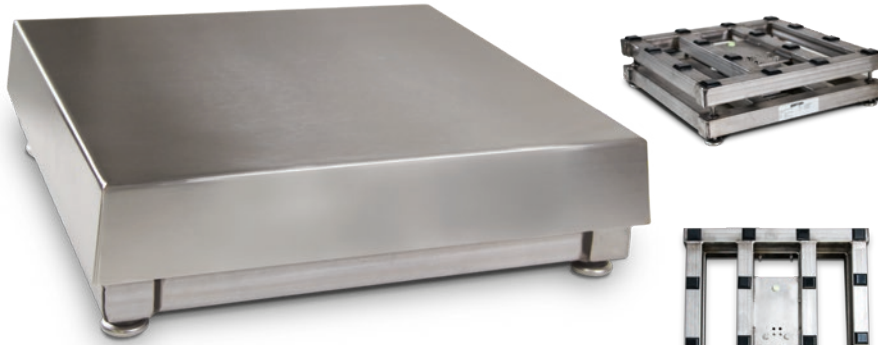


BenchMark® SS

Stainless Steel Bench Scale

BENCH SCALES



Approvals



Measurement
Canada
Approved



APPROVED
† Load cell
approval



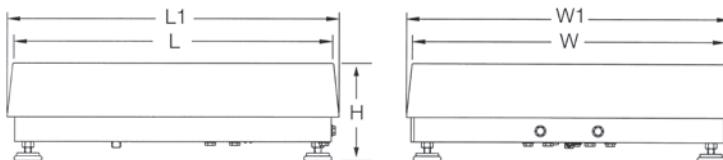
APPROVED
†† Load cell
approval

Part Number/Price

Part #	Capacity	Platform Dimensions (L × W × H)	Est. Weight	Price
186222 †	50 lb (25 kg)	12 × 18 × 4.00 in	37 lb	Consult
186223 †	100 lb (50 kg)	12 × 18 × 4.00 in	37 lb	Consult
18591 †	50 lb (25 kg)	18 × 18 × 5.25 in	68 lb	Consult
18593 †	100 lb (50 kg)	18 × 18 × 5.25 in	68 lb	Consult
18595 †	150 lb (75 kg)	18 × 18 × 5.25 in	68 lb	Consult
18597 †	200 lb (100 kg)	18 × 18 × 5.25 in	68 lb	Consult
18599 †	250 lb (125 kg)	18 × 18 × 5.25 in	68 lb	Consult
18601 †	300 lb (150 kg)	18 × 18 × 5.25 in	68 lb	Consult
18603 †	500 lb (250 kg)	18 × 18 × 5.25 in	68 lb	Consult
18605 ††	1,000 lb (500 kg)	18 × 18 × 5.25 in	68 lb	Consult
18607 †	50 lb (25 kg)	24 × 18 × 5.25 in	78 lb	Consult
18609 †	100 lb (50 kg)	24 × 18 × 5.25 in	78 lb	Consult
18611 †	150 lb (75 kg)	24 × 18 × 5.25 in	78 lb	Consult
18613 †	200 lb (100 kg)	24 × 18 × 5.25 in	78 lb	Consult
18615 †	250 lb (125 kg)	24 × 18 × 5.25 in	78 lb	Consult
18617 †	300 lb (150 kg)	24 × 18 × 5.25 in	78 lb	Consult
18619 †	500 lb (250 kg)	24 × 18 × 5.25 in	78 lb	Consult
18621 ††	1,000 lb (500 kg)	24 × 18 × 5.25 in	78 lb	Consult
18623 †	100 lb (50 kg)	24 × 24 × 5.25 in	84 lb	Consult
18625 †	150 lb (75 kg)	24 × 24 × 5.25 in	84 lb	Consult
18627 †	200 lb (100 kg)	24 × 24 × 5.25 in	84 lb	Consult
18629 †	250 lb (125 kg)	24 × 24 × 5.25 in	84 lb	Consult
18631 †	300 lb (150 kg)	24 × 24 × 5.25 in	84 lb	Consult
18633 †	500 lb (250 kg)	24 × 24 × 5.25 in	84 lb	Consult
18635 ††	1,000 lb (500 kg)	24 × 24 × 5.25 in	84 lb	Consult

Options/Accessories

Part #	Description	Catalog Page #
Consult	Scale columns	See page 195
Consult	Ball transfer and roller conveyor scale tops	See page 194
Consult	Mobile scale carts	See page 190 to page 193



Standard Features

- NTEP Certified load cell
- 304 stainless steel frame and cover
- Base design isolates load cell from overloads and shock loads for added durability
- Specially designed adjustable support feet provide exceptional traction and will not scratch surfaces

Specifications

Load Cell:

IP66, environmentally sealed
Aluminum

Output Impedance:

350 ohm

Maximum Overload:

150% to 200% depending on capacity

Overload Protection:

Five-point, independently adjusted

Scale Frame:

AISI304L, glass bead blasted for even appearance

Scale Cover:

AISI304L, straight line finish, Ra=45 ±10

Cable Length:

10 ft (3 m)

Temperature:

Compensated:
14 °F to 104 °F (-10 °C to 40 °C)

Warranty:

Two-year limited

Approvals:

NTEP 95-072, Class III, 5,000 d
Measurement Canada AM-5082
Load cell is NTEP
Load cell is FM/cFMus approved

Dimensions

BenchMark SS			
12 × 18 in			
H	4.00 in	W	18.00 in
L	12.00 in	W1	18.50 in
L1	12.50 in		
18 × 18 in			
H	5.25 in	W	18.00 in
L	18.00 in	W1	18.75 in
L1	18.75 in		
18 × 24 in			
H	5.25 in	W	18.00 in
L	24.00 in	W1	18.75 in
L1	24.75 in		
24 × 24 in			
H	5.25 in	W	24.00 in
L	24.00 in	W1	24.75 in
L1	24.75 in		

Note: 1 in = 25.4 mm