

ISHIDA AC-4000 Series Wireless Communications



YDI Access Point Quick Setup Procedure



YDI Access Point Quick Setup

IMPORTANT: The computer used to access and setup the YDI AP+ Access Point MUST be on the same network subnet. For example, if the AP's IP address is set to 192.168.10.240, the PC must be on the same network as 192.168.10.xxx. The subnet mask is 255.255.255.0.

Install the YDI AP Manager program.

Open the AP Manager.

Select the Access Point from "List of scanned devices" box (see Fig 1.).

Click **Configure Remote** button.

The default password is "public".

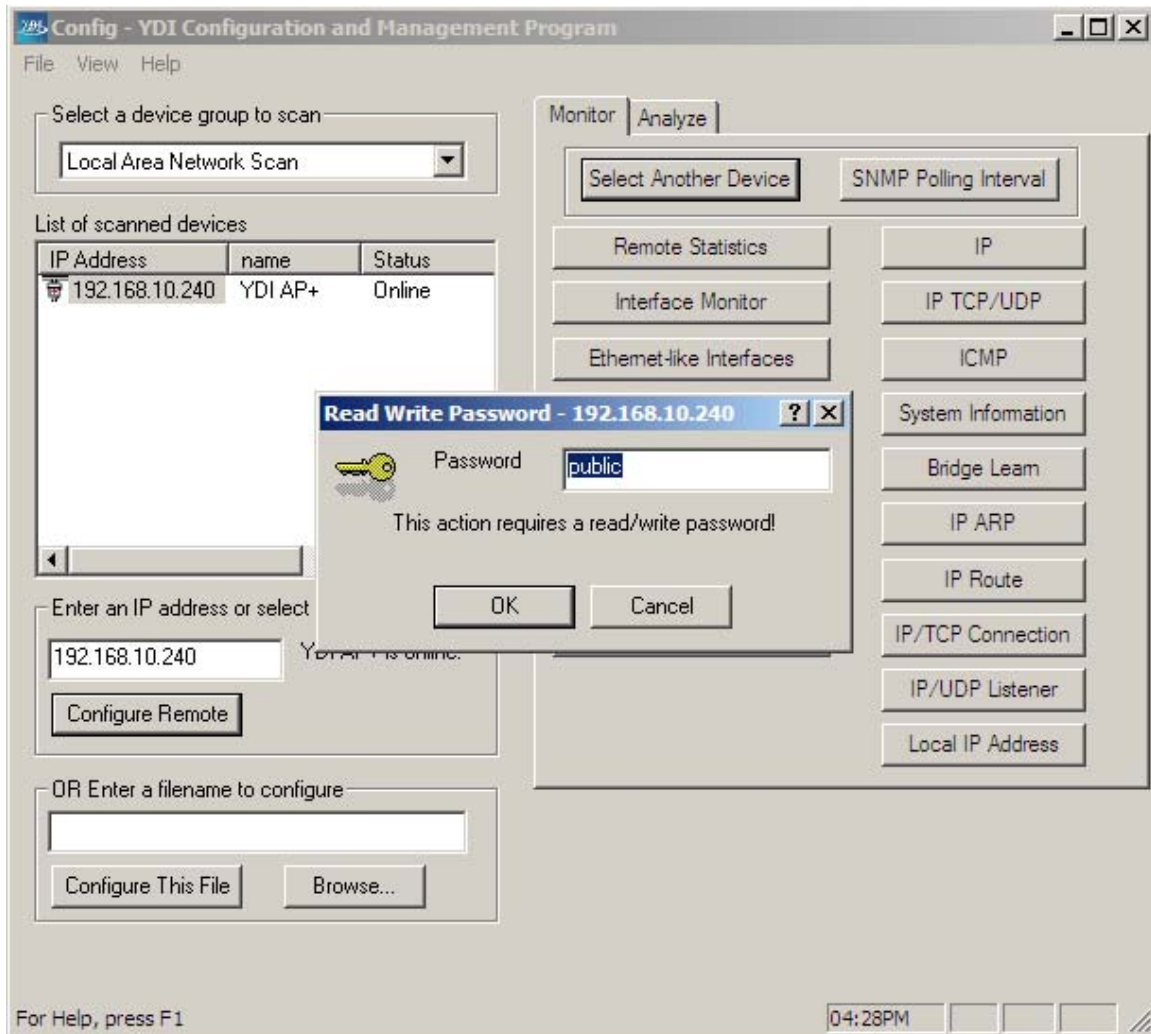


Figure 1.

YDI Access Point Quick Setup

Select the Setup tab and click **IP Host** button (see Fig 2.).

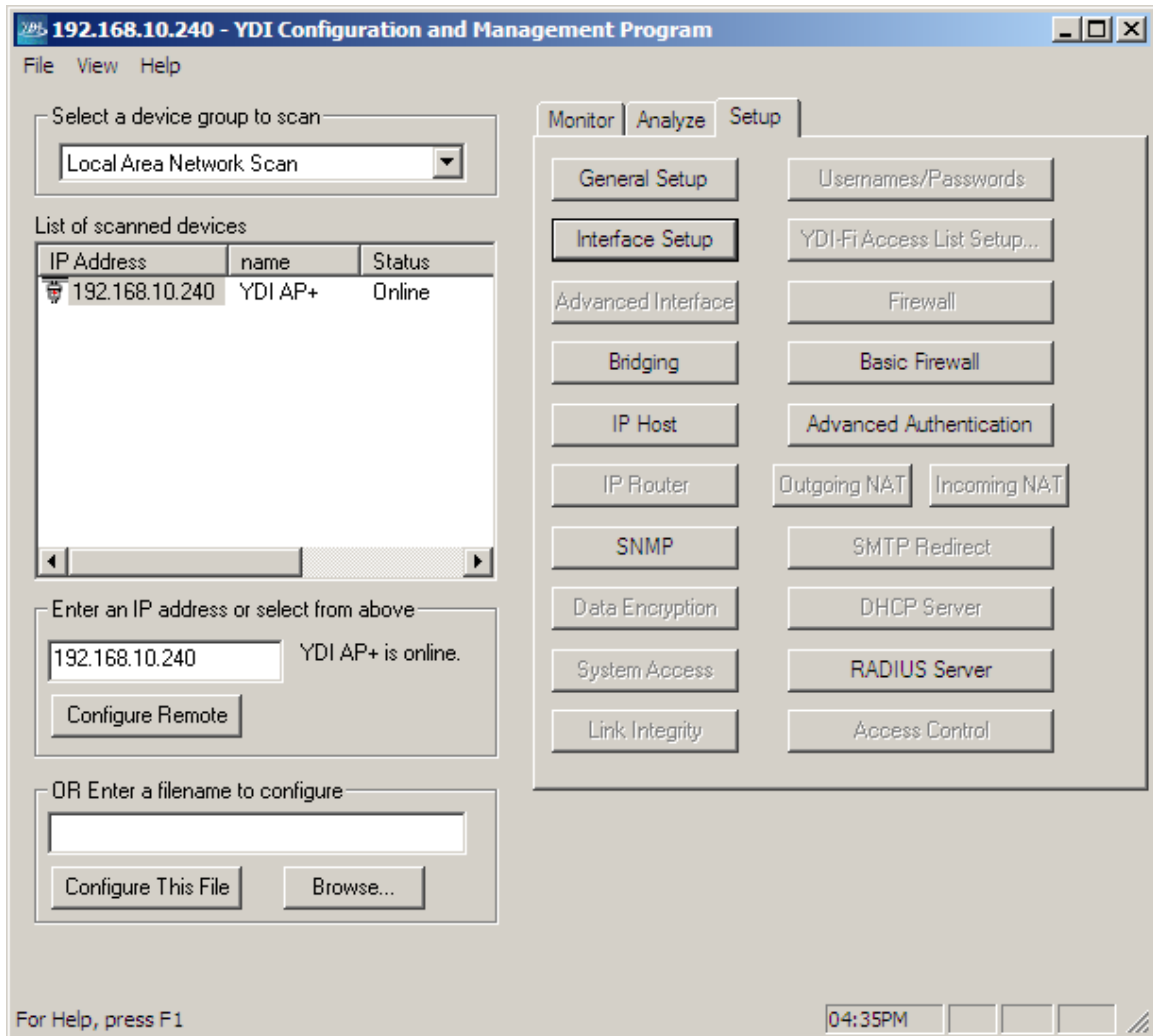
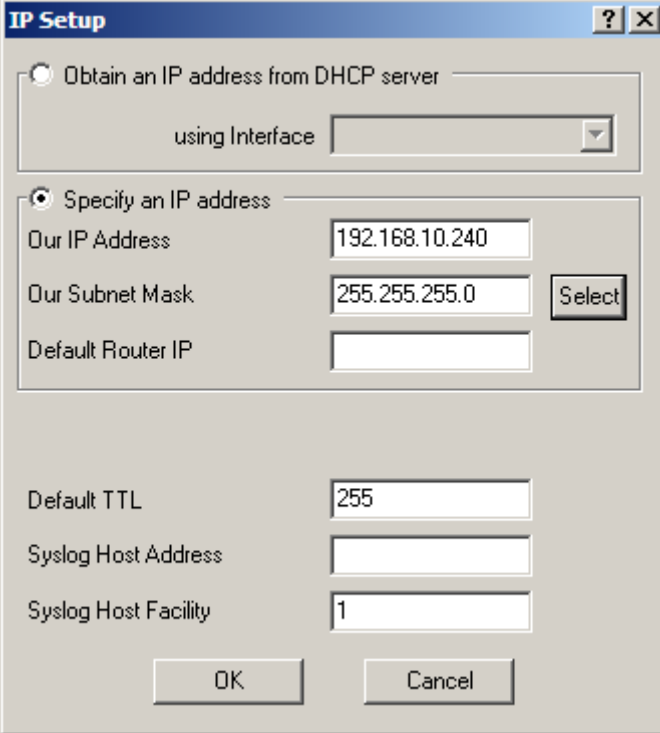


Figure 2.

YDI Access Point Quick Setup

Set the IP Address as needed, in this example as "192.168.10.240" (see Fig 3.).
Set the Subnet Mask as needed, in this example as "255.255.255.0".
Set the Router IP Address as needed, not used in this example [This is the gateway].
Select **OK**.

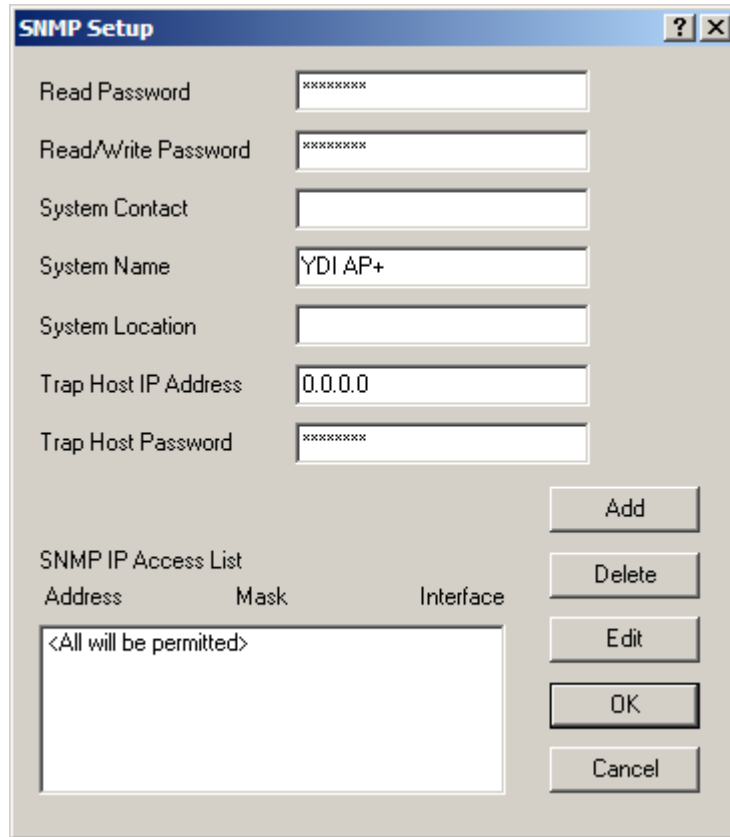


The image shows a Windows-style dialog box titled "IP Setup". It has a blue title bar with a question mark icon and a close button (X). The dialog is divided into two main sections. The first section, "Obtain an IP address from DHCP server", is unselected. The second section, "Specify an IP address", is selected. In this section, there are three input fields: "Our IP Address" containing "192.168.10.240", "Our Subnet Mask" containing "255.255.255.0", and "Default Router IP" which is empty. A "Select" button is positioned to the right of the Subnet Mask field. Below these fields are three more input fields: "Default TTL" containing "255", "Syslog Host Address" which is empty, and "Syslog Host Facility" containing "1". At the bottom of the dialog are two buttons: "OK" and "Cancel".

Figure 3.

YDI Access Point Quick Setup

Select the Setup tab and click the **SNMP Setup** button.
Set the Access Point System Name, in this example "YDI AP+" (see Fig 4.).
[This will help identify the device in a list of access points]
Select **OK**.



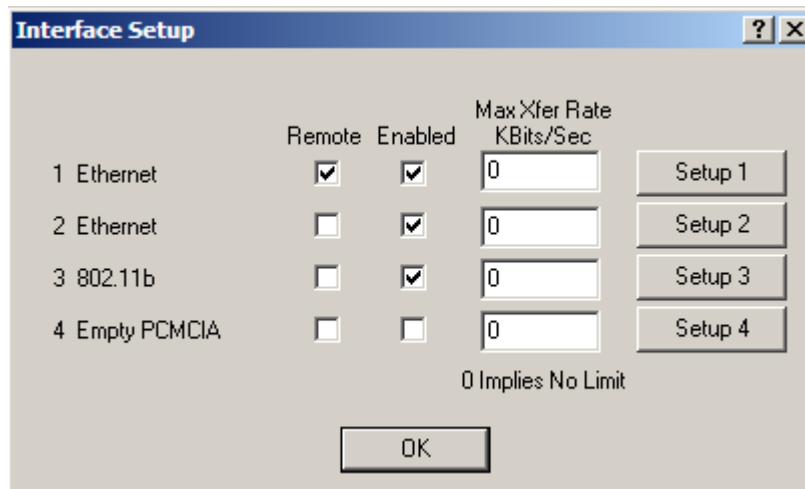
The SNMP Setup dialog box contains the following fields and controls:

- Read Password: [password field]
- Read/Write Password: [password field]
- System Contact: [text field]
- System Name: [text field containing "YDI AP+"]
- System Location: [text field]
- Trap Host IP Address: [text field containing "0.0.0.0"]
- Trap Host Password: [password field]
- Buttons: Add, Delete, Edit, OK, Cancel
- SNMP IP Access List table:

Address	Mask	Interface
<All will be permitted>		

Figure 4.

Select the Setup tab and click the **Interface Setup** button.
"3. 802.11b" should be checked as "Enabled" (see Fig 5.).
Click the **Setup 3** button [NOTE: this is with PCMCIA card in "A" slot, use Setup 4 if in slot "B"].



The Interface Setup dialog box contains the following table and controls:

	Remote	Enabled	Max Xfer Rate KBits/Sec	
1 Ethernet	<input checked="" type="checkbox"/>	<input checked="" type="checkbox"/>	0	Setup 1
2 Ethernet	<input type="checkbox"/>	<input checked="" type="checkbox"/>	0	Setup 2
3 802.11b	<input type="checkbox"/>	<input checked="" type="checkbox"/>	0	Setup 3
4 Empty PCMCIA	<input type="checkbox"/>	<input type="checkbox"/>	0	Setup 4

0 Implies No Limit

OK

Figure 5.

YDI Access Point Quick Setup

Set the Network Name (SSID), in this example as "WaveLAN Network" (see Fig 6.). This is the wireless network name the scales will be set to use. Click the **Frequency** button if multiple Access Points will be used, Click the **Security** button if encryption will be used, otherwise select **OK**.

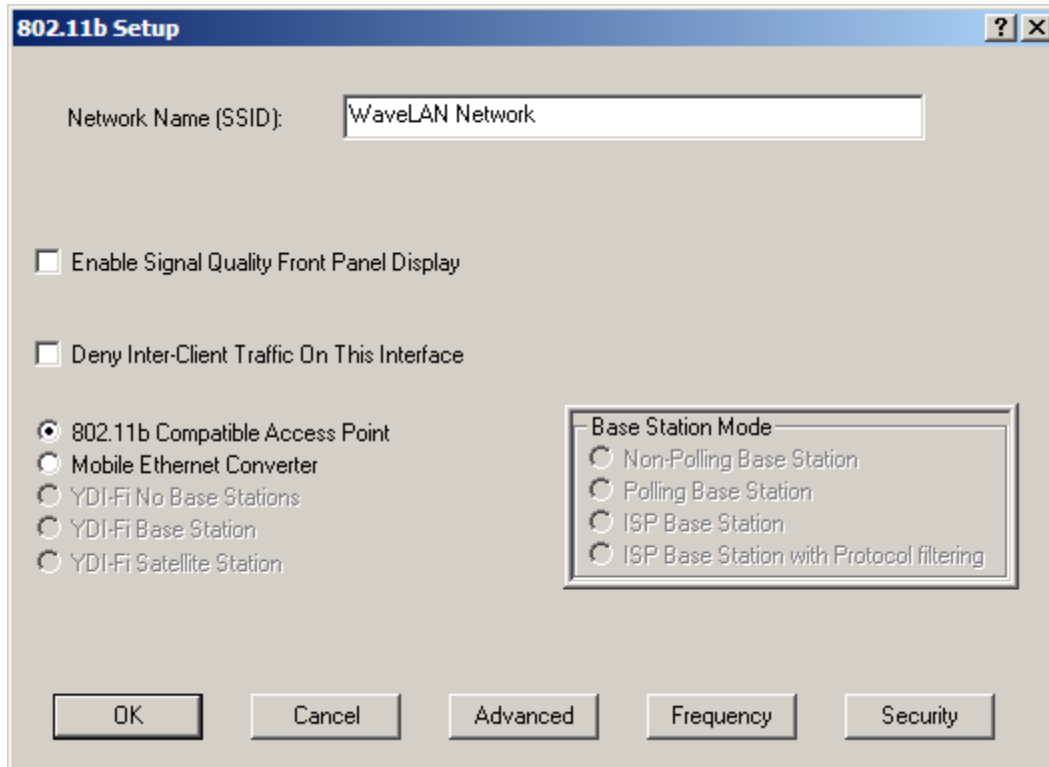


Figure 6.

If multiple Access Points are to be used then those units within range of each other must be set for different channels to prevent interference (see Fig 7.). Channel 3 is the default. When changing channels, the odd numbers are normally selected. Select a Channel. Select **OK**.

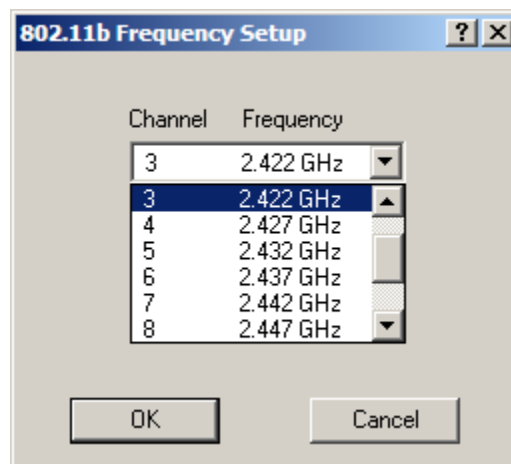


Figure 7.

YDI Access Point Quick Setup

If encryption is required select "Static WEP keys only" (see Fig 8.)

Select **64-bit** or **128 bit** as needed.

Enter the Static WEP Encryption code for Key 1.

Encryption keys must be the following length:

64-bit ASCII = 5 characters

128-bit ASCII = 13 characters

64-bit Hex = 10 characters

128-bit Hex = 26 characters

Note: to set Hex values enter "0x" as the leading characters. Example: "0x1A2B3C4D5E"

After selecting OK, the encryption key will be displayed as "*****".

BE CAREFUL – review the entry several times before leaving this screen, setting the wrong encryption key will prevent any data transfer.

Set "Deny non-encrypted data"

Note: it is recommended to set this last -- after communication has been confirmed.

Select **OK, OK**.

802.11b Security Setup

WEP Key Generation

- Disable WEP Encryption
- Static WEP Keys Only
- 802.1x Auto WEP Key Generation
- 802.1x & Static WEP Mixed Mode

Advanced Options

- Deny non-encrypted Data
- Distribute WEP Keys
- Regenerate new WEP keys every minutes (>= 5)
- Closed Wireless System

Use 64 bit 128 bit WEP Keys

Static WEP Encryption Keys

1 *****

2

3

4

Encrypt Data Transmissions Using: Key 1

OK Cancel

Figure 8.

YDI Access Point Quick Setup

Go to File menu and select **Save Config** (see Fig 9.).
Configuration data will be saved in the Access Point.
The Access Point will reboot and be available in approximately 15 seconds.

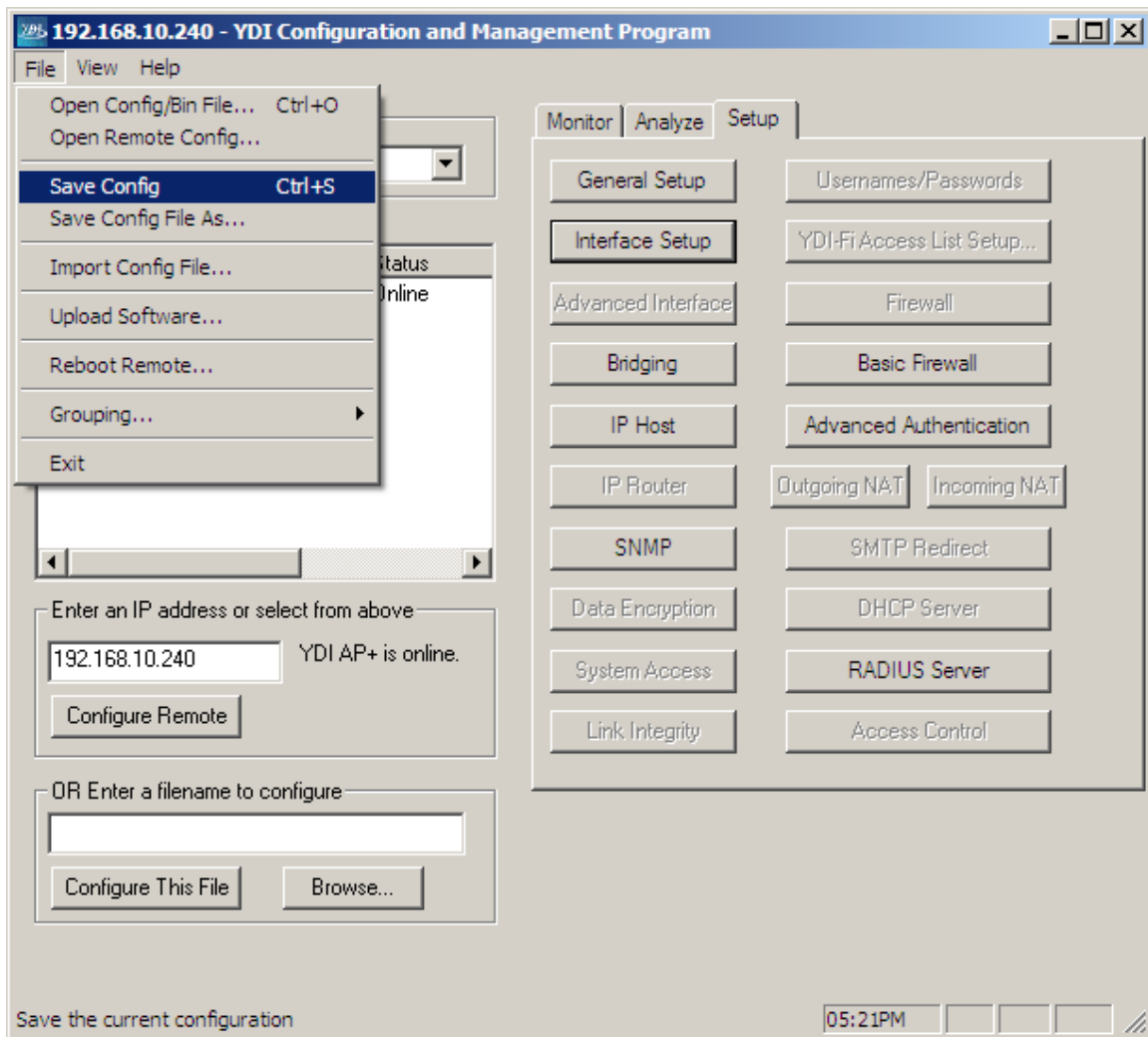


Figure 9.

YDI Access Point Quick Setup

TROUBLESHOOTING

1. Why is the Access Point status offline in figure 1?

The IP Addresses of the computer and Access Point are not on the same network. Temporarily change the computer's IP Address to match the Access Point's network. Then change the AP address to match the computer's network (see figure 3) and restore the computer's original address.

2. When does the Frequency need to be changed?

If multiple Access Points are within range of each other, each must be set with a different frequency. Overlapping Access Points coverage will prevent or disrupt communications. Refer to figure 7.

3. What is the difference between the Access Point's System Name and Network Name (SSID)?

The System Name is used to differentiate Access Points shown in the List of Scanned Devices (figure 2). The SSID (figure 6) is the wireless network name to which the RF enabled scales will connect.

4. Can an Access Point be used as a stand-alone device?

No, the Access Point must be hard wired to the computer network.