

Questionnaires

TABLE OF CONTENTS

Overhead Weighing System Questionnaire	196
Rigging Hook Questionnaire	198
Load Pin Questionnaire	199
Low Headroom Weighing Questionnaire	200
Dyna-Clamp Tension Meter Questionnaire	201
Wi-Fi Information Request.....	202

Product names, logos, brands, and other trademarks featured or referred to within this publication are the property of their respective trademark holders.

Overhead Weighing System Questionnaire

System/Application Description: _____

Goals for Weighing System: _____

SCALE REQUIREMENTS

Scale type: _____

Scale/system capacity: _____ lb kg ton metric ton other

Number of load cells: _____

Legal for Trade? Yes No

Transmitter power (at load cells): AC DC voltage Battery

Receiver Power: AC DC voltage Battery

Check any desired output options (if applicable):

mV output Yes No

Analog output Yes No

Relays Yes No

REMOTE REQUIREMENTS

Remote control required? Yes No

Remote display required? Yes No

If remote display is not required, are, are zero, tare, on/off capabilities required? Yes No

If Remote Display is Required:

Are Zero, Tare, On/Off Capabilities Required from the Remote Display? Yes No

Does the Remote Display need to be Handheld or Mounted? Handheld Mounted

Is the Remote Display Wireless or Hardwired? Wireless Hardwired

RADIO FREQUENCY

Transmission Distance: ft m

Line of Sight: Yes No

Obstructions (list any): _____

Potential sources of RF interference _____

Other RF systems present: Yes No, if yes Indoor Outdoor

Overhead Weighing System Questionnaire

SKETCH OF RF FIELD

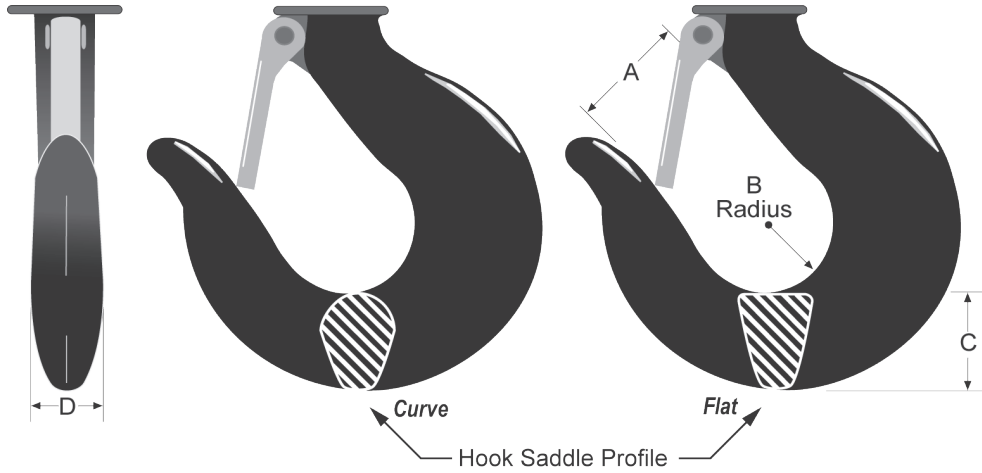
This sketch will be used by our technicians to help find the optimal antenna types and locations for this application.

- Include all transmitters and receivers that are part of this weighing system
- Include any other transmitters or receivers operating at 2.4 GHz
- Include any RF barriers, such as concrete walls, large steel equipment, cages
- Include sources of interference, such as high-power electrical motors and generators
- Include dimensions so we can understand the range and antenna gain requirements



Rigging Hook Questionnaire

DIMENSIONS



A	B	C	D
in/mm	in/mm	in/mm	in/mm
Profile: <input type="checkbox"/> Curve <input type="checkbox"/> Flat			
Capacity:			

Note: Reference your existing hook, also making sure these dimensions will meet your current rigging needs.

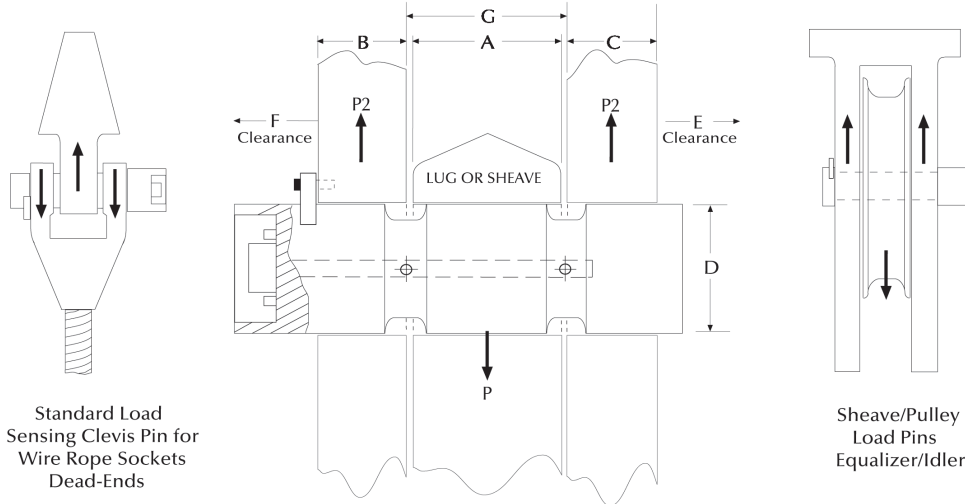
Load Pin Questionnaire

Name: _____

Company: _____

Phone: _____

LOAD PIN CRITICAL DIMENSIONS



A=Width	B=Width	C=Width	D=Diameter	E=Clearance	F=Clearance	G=Width
inch	inch	inch	inch	inch	inch	inch

NOTE: Minimum clearance between A and G is 0.0625 inch

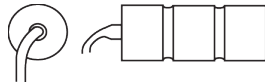
LOAD PIN DATA

Lube port: Yes No _____ # of exits
 Hoist capacity: _____ tons
 Parts of wire rope: _____
 Sensor capacity: _____ tons
 Safety factor: 3:1 5:1 7:1 10:1
 Application: _____

Accuracy requirement: _____
 Temperature requirement: _____
 Output requirement: _____
 Material testing requirements: _____
 Load vector orientation/alignment:
 ← → ↑ ↓

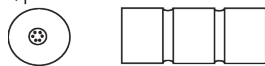
CABLE CONNECTIONS

End-mounted cable:



Sensor's cable length: _____ feet

End-mounted connector:
(standard)



Comments: _____

Side-mounted cable:



Side-mounted connector:



Recessed connector:



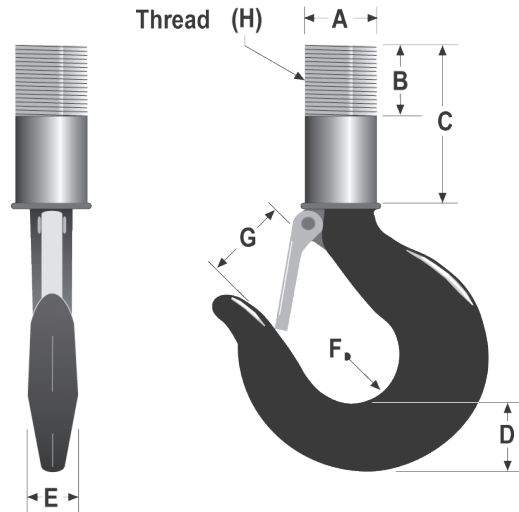
Form #0201 New 10/2024

Low Headroom Weighing Questionnaire

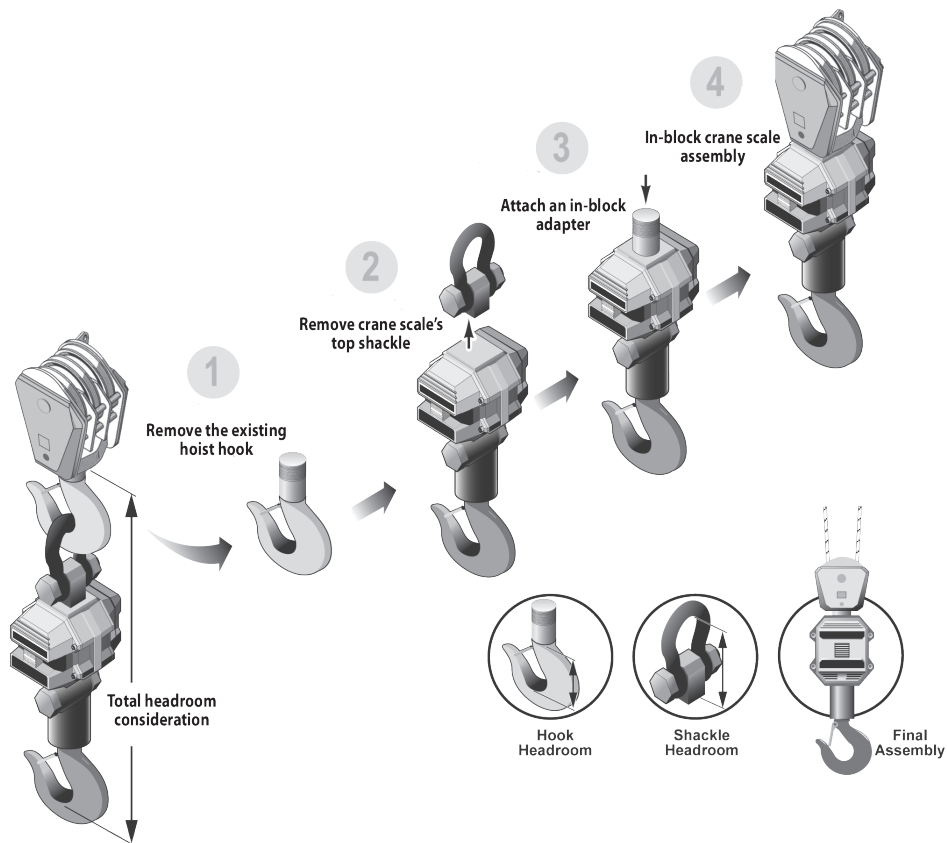
Concern: Minimal vertical headroom.

Solution: In-block adapter with special hook (if needed).

DIMENSIONS FROM EXISTING CRANE HOOK



A	B	C	D	E	F	G	H
inch/mm	inch/mm	inch/mm	inch/mm	inch/mm	inch/mm	inch/mm	inch/mm
Hook Capacity:							



QUESTIONNAIRES

Form #0356 New 10/2024

Dyna-Clamp Tension Meter Questionnaire

Industry used in: _____

Is protective case required: Yes No

WIRE ROPE PRE-CALIBRATION

There are up to 8 factory calibrations provided. The information provided below will be used for those calibrations.

	Rope/Cable Diameter	Strand Arrangement	Rope/Cable Material	Minimum Breaking Load (MBL) if known	Working Load Limit (WLL) if known
1.	inch/mm				
2.	inch/mm				
3.	inch/mm				
4.	inch/mm				
5.	inch/mm				
6.	inch/mm				
7.	inch/mm				
8.	inch/mm				

If working load limit is not known, we will calculate it as a maximum of 20% of the MBL.

QUESTIONNAIRES

Wi-Fi Information Request

Product: _____ Electronics Serial Number: _____

In order to customize a Wi-Fi module, the following information is required.

NETWORK TOPOLOGY

- Server (Soft AP) - User's laptop or tablet is connecting directly to the scale. Only one module may be connected at a time in this mode.
- Client - The scale connects to an existing router. This allows a laptop or tablet to connect to multiple scales at once.

SERVER MODE

SSID: _____
The name for the network that the laptop/tablet is connecting to.

Security Mode:

- Open - Allow anyone to connect to the scale
- WPA2 - Require a password to connect to the scale
Password: _____
Only necessary if security mode is set to WPA2.

DHCP:

- On - Assign a dynamic IP to the scale. The laptop/tablet connecting to the scale may have a dynamic IP (**RECOMMENDED**)
- Off - Assign a static IP to the scale. The laptop/tablet connecting to the scale must also have a static IP
IP Address-Static IP of the scale: _____
Net Mask/Gateway to assign to the scale: _____
Port used to connect to the scale (default 2000): _____

CLIENT MODE

SSID: _____
The SSID of the router the scale will connect to.

Security Mode of the router:

- Open
- WPA2 - Password: _____
This is the password used to connect to the router.

DHCP:

- On - Allow the router to assign a dynamic IP to the scale (**RECOMMENDED**)
- Off - Assign a static IP to the scale. This IP must be added to the static IP list in the router
IP Address-Static IP of the scale: _____
Net Mask/Gateway to assign to the scale: _____
Port used to connect to the scale (default 2000): _____