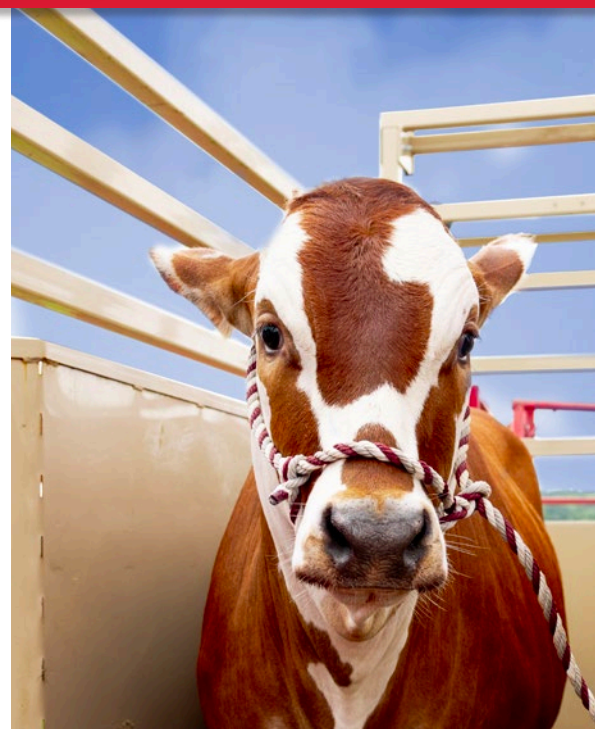


# SAS

SINGLE ANIMAL SCALE

LEGAL  
FOR TRADE



**RICE LAKE**<sup>®</sup>  
WEIGHING SYSTEMS

800-472-6703

[www.ricelake.com](http://www.ricelake.com)

# SAS

SINGLE ANIMAL SCALE

## Single Animal Weighing

### Anywhere You Need It

The SAS offers safe and reliable weighing for a wide range of livestock including cattle, bison, horses, sheep, swine and exotics. With a load capacity of up to 5,000 pounds and Legal for Trade readability in one pound increments, the SAS is ideal for county fairs, youth agriculture organizations, university research centers, veterinary practices and small- to medium-size operations that do not require a multi-animal scale.

### Solid Construction

The SAS is built with 48-inch solid kick panel sides and thick wall tubing for added operator and animal safety. The subframe features a durable, 3 x 6 inch thick wall tubing. A choice from swing gates, sliding gates, head gate or combination gates ensures the best fit for the environment's demands. Gates are also interchangeable after use, allowing the scale to change with your operations. Load cells and electronic components are housed in protective enclosures above the subframe, away from muddy and sloppy ground.

### 920i Rate of Gain Weigh Center

The weigh center is mounted on the exterior of the cage for easy operation and viewing. A legal ticket can be printed and the weatherproof enclosure protects instrumentation. RATTLETRAP® digital filtering ensures stable weights even when animals are moving on the scale. The 920i Rate of Gain digital weight indicator software is the perfect addition to a system. The software allows up to 500 unique ID tag entries either manually or with an Allflex® AWR300 Series wand. The software tracks rate of gain by date and provides average rate of gain per day when two to three weights are entered for the same ID number.



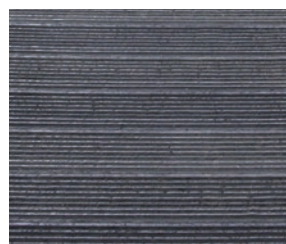
Swing gate option



SAS shown with optional enclosure  
Slide gate option

## Flooring

The SAS features unmatched traction for animals in wet and slippery conditions with a choice of either X-Lug or X-Plank flooring. Both styles are made from durable, recycled plastic and rubber material that will never rot or harbor bacteria. X-Lug flooring uses a deep, aggressive tread, and X-Plank flooring utilizes a less-aggressive, wheel-accessible tread.



X-Plank flooring



X-Lug flooring (Standard)

### STANDARD FEATURES

- Swing gate, sliding gate, head gate or combination
- 48 in solid kick panel sides
- Ships fully assembled
- Pedestal is included

#### SAS

##### Inside Dimensions (L x W)

8 ft x 2 ft 10 in

##### Outside Dimensions (L x W x H)

9 ft 1 in x 3 ft 11 in x 8 ft 2 in

### OPTIONS/ACCESSORIES

- Light duty enclosure
- Ticket printer
- Allflex® AWR300 portable tag reader
- 920i Indicator with Single Animal Rate of Gain software (AC or DC powered available)
- Weigh center (920i indicator with Single Animal Rate of Gain software, TM-U295 and weatherproof enclosure)
- AC/DC powered indicators
- Bison cage custom

### SPECIFICATIONS

CAPACITY:	5,000 lb x 1 lb increments
WARRANTY:	Two-year limited warranty
APPROVALS:	NTEP CC 99-091 Measurement Canada AM4847

### APPROVALS



Measurement  
Canada  
Approved