

Automated Ticketing

TABLE OF CONTENTS

1280 Kiosk22
Automated Truck Scale System

Weigh Out/Printer Kiosk23
Automated Truck Scale System

Weigh/Check In Kiosk24
Automated Truck Scale System

Printer Kiosk24
Direct Thermal Printer Kiosk

Printer Kiosk25
Thermal-transfer Printer Kiosk

OnTrak®26
Truck Data Management Software

Kiosk Safety Swing-away Arm.....27
Self Centering Kiosk Mount

Vehicle Loop Detector.....29

EMX Lite Preformed Loops®29

RFID.....30
TransCore® SmartPass®

Multiprotocol Rail Reader and Parapanel Antenna.....30

RFID Transportation Tags.....31

RFID Access Tags.....31

HID RFID Cards.....32

HID RFID Readers32

HID Long Range Readers33

Photo Eyes.....34

Traffic Light Kits35

Intercom36

Ethernet Serial Servers36

AUTOMATED
TICKETING

Product names, logos, brands and other trademarks featured or referred to within this publication are the property of their respective trademark holders.

1280 Kiosk

Automated Truck Scale System



Shown with optional features

Standard Features

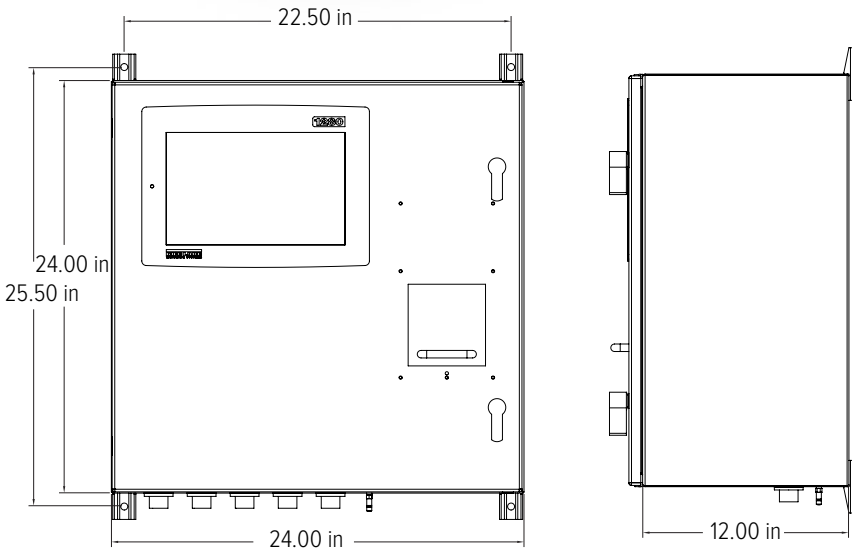
- 12-inch 1280 color touchscreen
- Stainless steel or mild steel enclosure
- 1,500 NIT display
- Two serial ports RS-232 or RS-485/422
- Operator prompting
- Formattable tickets
- Transmits weight to remote display
- 120 or 220 VAC
- 460 MB onboard database
- Ethernet TCP/IP (wired and Wi-Fi)
- Web server
- Direct thermal printer
- Internal heater
- Slide door access to ticket
- Works with standard 1280 programs - customization available

Optional Features

- A/D cards
- RFID reader
- Gate control
- Loop detector input
- QWERTY keyboard
- 12-key keypad
- Credit card reader (US and Canadian currency)
- Stop/Go remote display traffic light control

Part Numbers/Price

Part#	Description	Price
Consult	1280 Kiosk, touchscreen, direct thermal printer	Consult



Weigh Out/Printer Kiosk

Automated Truck Scale System



Shown with optional features

Standard Features

Weigh Out/Printer Kiosk

- 920i® HMI with sun shield
- Six serial ports
- 1 MB database memory
- Two option slots
- Slide door access to ticket
- 8-in paper roll
- Operator prompting
- Formattable tickets
- Transmits weight to remote display
- Stop/Go remote display traffic light control
- Direct thermal kiosk printer

Weigh Out/Printer Kiosk Options

- Ethernet TCP/IP (wired and Wi-Fi options available)
- Single or dual channel A/D cards
- RFID reader
- Currency acceptor (US currency only)
- Internal heater
- Gate control
- Loop detector output
- Automated traffic light control
- Credit card reader (US and Canadian currency)

Consult for the following options

- Stainless steel enclosure
- Bar code badge scanner
- 230 VAC

Part Numbers/Price

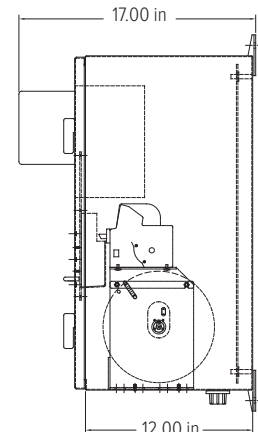
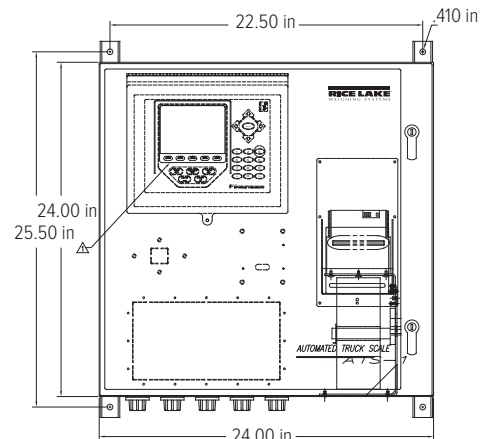
Part #	Description	Price
119687	Weigh out kiosk with 920i® HMI and thermal kiosk printer, 24 × 24 × 12 in painted mild steel enclosure, A/D not included	\$6,395.00

Options/Accessories

Part #	Description	Price
119691	Vandal-proof 12-key keypad	\$505.00
176452	HID smart card reader	\$695.00
119692	88 key, panel mount Qwerty style keyboard	\$875.00
119693	200 watt heater	\$925.00
119761	Ethernet unmanaged switch, five port	\$315.00
119689	Kiosk option, A/D single-channel, includes DIN rail and terminals	\$395.00
119690	Kiosk option, A/D dual-channel, includes DIN rail and terminals	\$575.00
119946	Single port Ethernet server	\$485.00
120040	Dual port Ethernet server	\$675.00
33490	Relay rack four-channel Opto 22 style with screws	\$125.00
21159	Internal transient protection	\$245.00

Replacement Parts

Part #	Description	Price
105445	Paper 6 in OD, one ply thermal 80 mm (3.1 in) 710 ft/roll	\$30.00
105446	Paper 8 in OD, one ply thermal 80 mm (3.1 in) 1268 ft/roll	\$32.50
54215	3.15 amp 250V Slo Blo 5 x 20 mm kiosk power input fuse	\$5.00
160025	Power supply, IDEC 12 V - 30 W	\$185.00
88792	Power supply, IDEC 12 VDC - 15 W	\$140.00
88793	Power supply, IDEC 24 VDC - 30 W	\$230.00
72682	Network protection, surge	\$80.00
69201	RS-232 protection, TP232	\$187.00
181230	Serial kiosk printer kit (includes printer, bracket assembly, power supply and cables)	\$1,635.00
191359	Ethernet kiosk printer kit (includes printer, bracket assembly, power supply and cables)	\$1,695.00
179762	Direct thermal replacement RS232 printer, kiosk 80 mm DTL	\$1,175.00
203720	Direct thermal replacement TCP/IP printer	\$1,325.00



AUTOMATED
TICKETING

Weigh/Check In Kiosk

Automated Truck Scale System

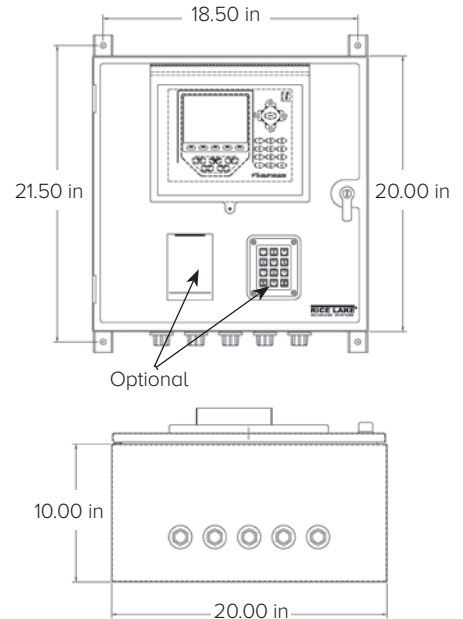


Shown with PN 176452

Standard Features

Weigh/Check In Kiosk

- 920i® HMI with sun shield
- Four serial ports
- 120 VAC
- Two option slots for 920i option cards



Part Numbers/Price

Part #	Description	Price
153353	Check-in kiosk with 920i HMI, 20 × 20 × 12 in painted mild steel enclosure	\$4,015.00

Options/Accessories

Part #	Description	Price
119691	Vandal-proof 12-key keypad	\$505.00
176452	HID smart card reader	\$695.00
119692	88 key, panel mount Qwerty style keyboard	\$875.00
119693	200 watt heater	\$925.00
119761	Ethernet unmanaged switch, five-port	\$315.00
119689	Kiosk option, A/D single-channel, includes DIN rail and terminals	\$395.00
119690	Kiosk option, A/D dual-channel, includes DIN rail and terminals	\$575.00
119946	Single port Ethernet server	\$485.00
120040	Dual port Ethernet server	\$675.00

Printer Kiosk

Direct Thermal Printer Kiosk



PN 112836

Standard Features

Direct Thermal Printer Kiosk

- Custom America VKP80II receipt printer
- Slide door access to ticket
- 8 in paper roll

Specifications

Line Voltages:

115 or 230 VAC

Frequency:

50/60 Hz

Power Consumption:

0.5 amps (depending on options)

Fusing:

3.15 amps circuit breaker

Humidity:

0 to 95% relative humidity

Printer Communication Ports:

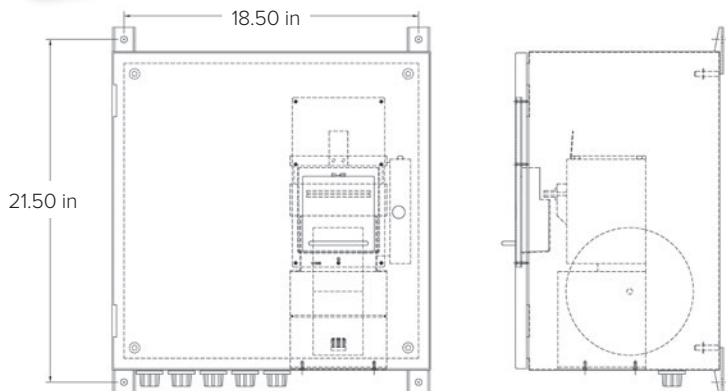
RS-232 or Ethernet

Storage Temperature:

14 °F to 158 °F (-10 °C to 70 °C)

Warranty:

Two-year limited



Printer Kiosk

Thermal-transfer Printer Kiosk



Basic printer kiosk
with optional RFID card
reader and optional
number keypad

Basic printer kiosk
with optional RFID
card reader



Basic printer kiosk
PN 92971

Standard Features

Printer Kiosk with Ethernet Intercom

- Digital Acoustics Ethernet TCP/IP intercom substation

Thermal-transfer Printer Kiosk

- Painted mild steel enclosure
- Slide door access to ticket
- Zinc-plated 3/4-inch NPT conduit hubs
- Additional options available upon request

Note: Printer, thermal transfer ribbon and card stock sold separately

Specifications

Line Voltages:

115 or 230 VAC

Frequency:

50/60 Hz

Power Consumption:

0.5 amps (depending on options)

Fusing:

6 amp circuit breaker

Humidity:

0 to 95% relative humidity

Printer Serial Ports:

RS-232
Ethernet (optional)

Storage Temperature:

14 °F to 158 °F (-10 °C to 70 °C)

Current Supported Riser Plates:

Zebra® 140XIIIPlus
Zebra 105SL
Zebra R110Xi
Zebra Z4Mplus
Zebra 2746e
Honeywell 4206
Honeywell I-4212
Intermec/Honeywell 3400e
Intermec/Honeywell 4440

Warranty:

Two-year limited

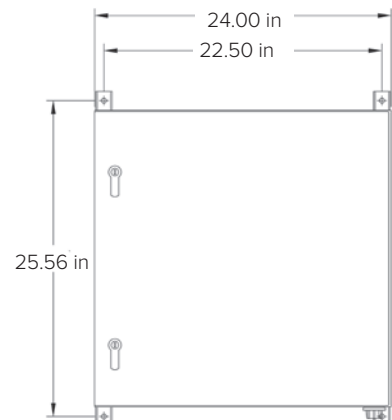
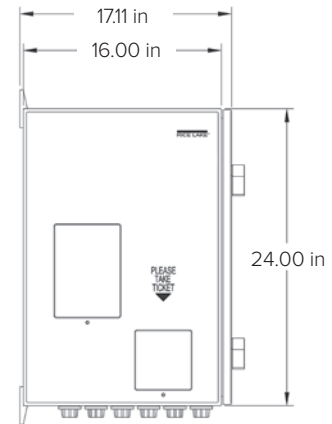
Part Numbers/Price

Part #	Description	Price
92971	Printer kiosk, inbound base unit 115 VAC (printer not included)	\$3,355.00
112836	Printer kiosk, thermal ticket printer 20 × 20 × 12 in painted mild steel enclosure	\$4,195.00
193639	Printer kiosk, thermal ticket printer (Ethernet), 20 × 20 × 12 in painted mild steel enclosure	\$4,355.00

A test plan is included with each kiosk.

Options/Accessories

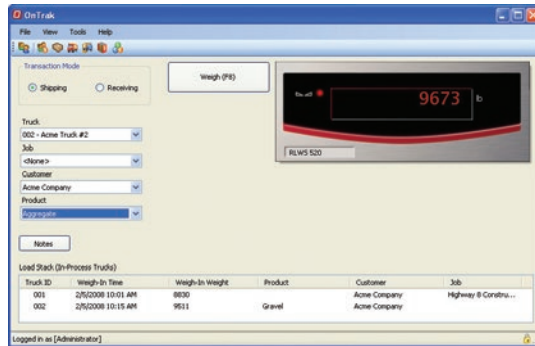
Part #	Description	Price
119693	200 watt heater	\$925.00
119761	Ethernet unmanaged switch, five-port	\$315.00
119946	Single port Ethernet server	\$485.00
120040	Dual port Ethernet server	\$675.00
93463	Printer riser plate for Honeywell I-4212e	\$315.00
93468	Printer riser plate for Intermec/Honeywell 3400e	\$315.00
176452	HID smart card reader	\$695.00
131143	Honeywell I-4212e, direct thermal RS-232, parallel and USB	\$1,595.00
64884	Thermal transfer option Honeywell	\$133.00
131150	Ethernet option Honeywell	\$365.00
53918	Cutter option Honeywell	\$798.00
109298	Tag, direct thermal, 4 in wide, 7.2 pt continuous 480 ft roll	\$51.00
179762	Direct thermal replacement RS232 printer, kiosk 80 mm DTL	\$1,175.00
203720	Direct thermal replacement TCP/IP printer	\$1,325.00
Consumables		
105445	Paper roll 6 in OD, one ply thermal 80 mm (3.1 in) 710 ft per roll	\$30.00
105446	Paper roll 8 in OD, one ply thermal 80 mm (3.1 in) 1268 ft per roll	\$32.50
89190	TT Tag stock 4 in wide, 7.5 pt continuous 400 ft roll	\$46.25
34056	Transfer ribbon, 4 in wide GPR Plus black 1181 ft roll	\$30.50



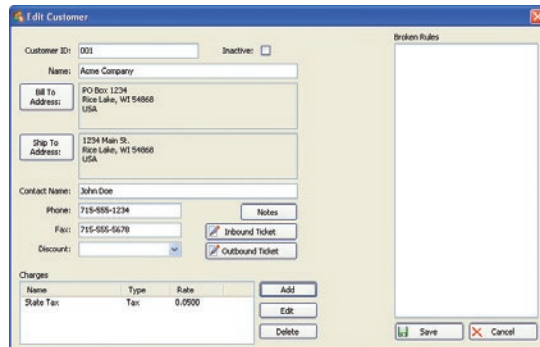
AUTOMATED
TICKETING

OnTrak®

TRUCK SCALE DATA MANAGEMENT



Weigh Scale



Customer Account Information

AUTOMATED
TICKETING

Approvals



Part Numbers/Price

Part #	Description	Price
104787	OnTrak activation code	\$1,495.00
101062	OnTrak CD-ROM	\$84.00

OnTrak trial at www.ricelake.com/ontrak

Options/Accessories

Part #	Description	Price
Consult	Non-Rice Lake indicator interface	\$245.00
Consult	Custom reports	\$243.00/hour
Consult	Database configuration	\$243.00/hour
FLD-INSTALL	Field installation	\$1,395.00/ weekday plus expenses
104789	Phone support, one hour	\$145.00
101003	Additional OnTrak manual	\$65.00

Standard Features

- Supports systems using Windows® 10 and newer
- Microsoft SQL Server Express client/server database (free edition)
- Comprehensive report filters
- User and administrator roles
- Backup and restore via SQL Server Management Studio freely available through Microsoft
- Unlimited charge/discount per product
- Ship or receive mode for each transaction
- Exclusive database for: customer, hauler, truck, product, job, price/discount, tax, transaction
- Ethernet TCP/IP or RS-232 connectivity
- Supports VIRTUi/VIRTUi2® or Rice Lake weight indicators
- .CSV transaction file export
- Supports one or two scales

Download OnTrak Software V2.14.00

Optional Features

- Image capture with Ethernet camera TCP/IP (requires SQL Server Standard or better through Microsoft)
- Interface to non-Rice Lake weight indicators
- Custom reports
- Database configuration
- Field installation and training
- Factory phone support

Specifications

System Requirements:

Windows® 10 and newer (x64 systems)

Databases:

10 GB max database size when using included Microsoft SQL Server Express
Unlimited database size when using a purchased edition (contact Microsoft for details on purchasing a licensed edition of SQL Server)

Communications:

Support for multiple printers
Supports all Rice Lake indicator interfaces
Supports VIRTUi/VIRTUi2 interface
920i based Automated Ticketing Kiosks
Optional drivers available for non-Rice Lake weight indicators

Transaction Ticket:

User defined ticket formatting

Reports:

Comprehensive report filters
Optional custom reports

Export Data:

File transfer via XML transaction; exported reports can be saved as PDF/XLS; configurable transaction data export in .CSV file format

Transaction Calculations:

Unlimited product prices and discounts
Tax calculations (does not integrate directly to financial software)

Software Support:

Database configuration, field installation and training available
Phone support packages available
Contact Rice Lake for further options

Approvals:

NTEP CC 05-107

Kiosk Safety Swing-away Arm

Self Centering Kiosk Mount



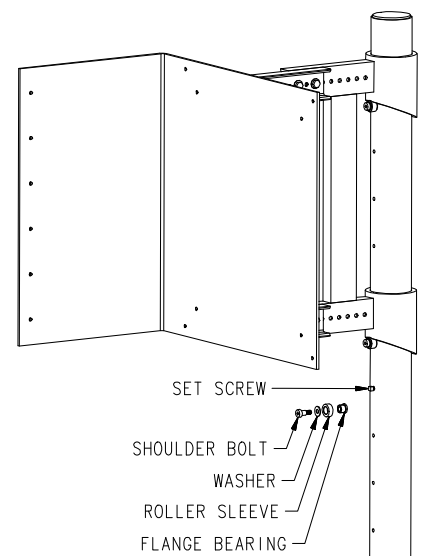
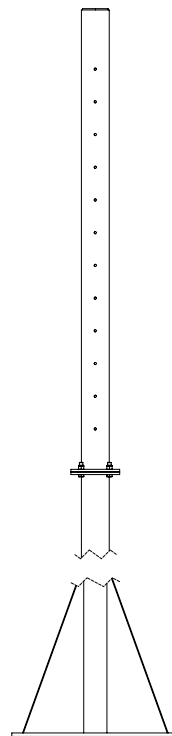
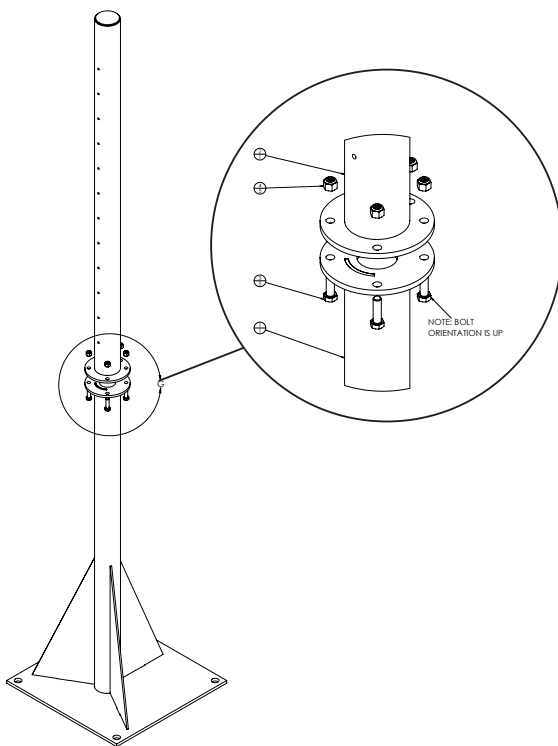
Standard Features

- Protects kiosk from vehicle traffic
- Swings away freely and returns to center position
- Universal mount accommodates a wide variety of kiosks
- Includes mounting pole and base stand
- Adjustable vertical and horizontal mounting

Part Number/Price

Part #	Description	Price
109164	Complete kit for pit type scale (10 ft pole, red paint)	\$1,645.00
109163	Complete kit for aboveground scale (12 ft pole, red paint)	\$1,675.00
105939	Weldment, swing arm, kiosk (red)	\$895.00
105941	Pole weldment, 10 ft supported/free standing, 4.5 in outer dimension (red paint)	\$695.00
105940	Pole weldment, 12 ft supported/free standing, 4.5 in outer dimension (red paint)	\$775.00
110606	Weldment, swing arm 24 × 24 × 16 in side discharge printer kiosk (red paint)	\$895.00
155435	Weldment, swing arm 30 × 24 × 16 in side discharge printer kiosk (red paint)	\$1,145.00
178074	Complete kit for pit type scale (10 ft pole, yellow paint)	\$1,645.00
178073	Complete kit for aboveground scale (12 ft pole, yellow paint)	\$1,675.00
178077	Pole weldment, 10 ft supported free standing 4.5 in outer dimension (yellow)	\$695.00
178076	Pole weldment, 12 ft supported free standing 4.5 in outer dimension (yellow)	\$775.00
178075	Weldment, swing arm kiosk (yellow)	\$895.00
160403	Mount, swing arm pole for SURVIVOR ATV truck scale	\$1,225.00

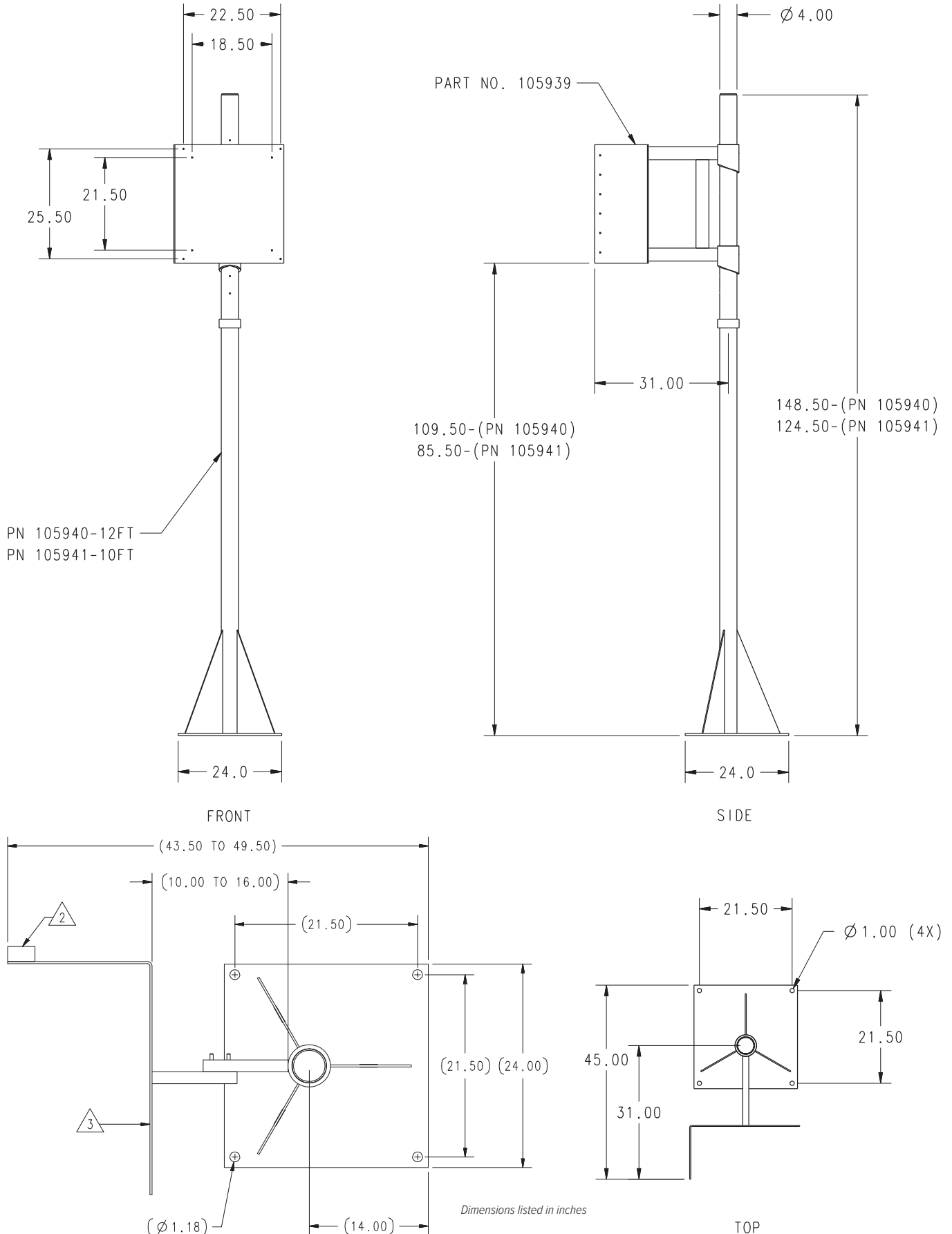
AUTOMATED
TICKETING



Kiosk Safety Swing-away Arm

Self Centering Kiosk Mount

AUTOMATED
TICKETING



Vehicle Loop Detector



Standard Features

Vehicle Loop Detector

- Loop diagnostics
- Loop isolation transformer
- Loop conditioner
- Aluminum RF shield housing
- Surge protection
- Loop frequency counter
- 10 gold-plated sensitivity controls
- Eight gold-plated function controls
- Six gold-plated controls for frequency, reset and frequency counter
- Two high-intensity LED indicators
- Two relays—relay 2 is pulse or presence

Specifications

Vehicle Loop Detector Power:

The detector is available in the following voltages:
12 VAC/DC, 24VAC, 24VDC, 110 VAC, 220 VAC
Maximum current draw 100mA

Low Power:

Detector is available with maximum current draw of 60mA

Operating Temperature:

-40 °F to 180 °F (-40 °C to 82 °C)

Enclosure:

Extruded anodized aluminum
(L × W × H)
3.25 × 2.56 × 3.65 in
(83 × 40 × 90 mm)

Output Relays:

5A/125 VAC standard version, 1A/125 VAC
low current version

Connector:

86CP11 compatible with 11-Pin Octal DIN-rail
mountable socket or wire harness

Overall Diameter of Loop Wire:

0.26 in

Loop Dimensions:

4 × 6 ft thru 4 × 12 ft standard,
custom sizes available

Lead-in-Wire:

50 ft long, twisted wire in PVC jacket

Loop Wire Approvals:

UL subject 13, Type PLTC 300V, 90C passes IEEE-
328,210,000, BTU Flame Test
Pennsylvania, Bureau of Deep Mine Safety,
Approval P-MWMS-1-85

Part Number/Price

Part #	Description	Price
Consult	Relay box	Consult
171093	Enclosure, loop detector (loop not included must order separately)	\$1,355.00
78986	4 × 8 ft loop, 50 ft lead wire	\$275.00
86758	4 × 10 ft loop, 50 ft lead wire	\$275.00

AUTOMATED
TICKETING

EMX Lite Preformed Loops®



Standard Features

EMX Lite Preformed Loops

- Rugged and flexible TPE tubing
- Electronic lightning protection of vehicle detectors
- Comes standard with 50 ft of twisted and jacketed lead-in wire
- Vehicle detection loop is constructed of stranded wire conductors with thermoplastic elastomer insulation jacketing
- Outer shell is flexible nonmetallic 0.26 in tubing
- Two relays—relay 2 is pulse or presence
- Loop installation requires backer rod and epoxy sealant provided by others

Specifications

Vehicle Loop Detector Power:

The detector is available in the following voltages:
12 VAC/DC, 24VAC, 24VDC, 110 VAC, 220 VAC
Maximum current draw 100mA

Low Power:

Detector is available with maximum current draw of 60mA

Operating Temperature:

-40 °F to 180 °F (-40 °C to 82 °C)

Enclosure:

Extruded anodized aluminum
(L × W × H)
3.25 × 2.56 × 3.65 in
(83 × 40 × 90 mm)

Output Relays:

5A/125 VAC standard version, 1A/125 VAC
low current version

Connector:

86CP11 compatible with 11-Pin Octal DIN-rail
mountable socket or wire harness

Overall Diameter of Loop Wire:

0.26 in

Loop Dimensions:

4 × 6 ft thru 4 × 12 ft standard,
custom sizes available

Lead-in-Wire:

50 ft long, twisted wire in PVC jacket

Loop Wire Approvals:

UL subject 13, Type PLTC 300V, 90C passes IEEE-
328,210,000, BTU Flame Test
Pennsylvania, Bureau of Deep Mine Safety,
Approval P-MWMS-1-85

Part Number/Price

Part #	Description	Price
86601	4 × 8 ft-3 ft range (includes 78985 - loop and 15968 - socket)	\$655.00
86759	4 × 10 ft-4 ft range (includes 78985 - loop and 15968 - socket)	\$655.00

RFID

TransCore® SmartPass®

AUTOMATED
TICKETING



Standard Features

TransCore® SmartPass® RFID Reader

- Fully self-contained, integrated reader
- Ideal for truck scales, and parking and access control applications
- 915 MHz RF band operation
- Compatibility with a wide range of industry-standard formats
- Weatherproof enclosure
- Quick, simple installation by trained, authorized personnel
- Programmable RF power
- Compatible with a variety of RFID tag options including half and full frame RFID tags (beam or battery powered) as well as windshield RFID tag options (beam or battery powered)

Specifications

Frequency Range:

902 to 928MHz

RF Control:

By sense output or host command

Polarization:

Linear, horizontal

Read Range:

Read performance varies depending on tag and reader configuration and environment
Read range for all the SmartPass E4 Reader is 12 ft (3.7 m) typical to 17 ft (3.7 m) maximum

I/O Control:

Input: Two independent dry contact closures for sense circuits

Output: Two independent Form-C contacts

Dimensions:

(L × D × W)
15.5 × 15.5 × 3.25 in
(393 × 393 × 83 mm)

Weight:

9.5 lb (4.3 kg)

Mounting Surface:

Mount to pole or wall, indoor or outdoor

Enclosure:

Tamper-proof, polycarbonate housing

Operating Temperature:

-40 °F to 131 °F (-40 °C to 55 °C)

Humidity:

100% condensing

Vibration:

0.5 grams, 10 to 500 Hz

Input Power:

16 to 20 VAC, 47 to 63 Hz, or 16 to 28 V DC

Part Number/Price

Part #	Description	Price
108201	SmartPass E4 reader only	\$6,725.00
162431	18 VAC power supply	\$47.00
86401	5 ft interface cable	\$165.00
162430	20 ft interface cable	\$330.00
86403	35 ft interface cable	\$490.00
162432	Pole/wall mount bracket	\$145.00

Multiprotocol Rail Reader and Parapanel Antenna



Standard Features

Multiprotocol Rail Reader

- Designed for railroad applications
- Fixed mount, integrated package (reader and RF module)
- Reads Association of American Railroads (AAR) format tags and Suer eGo® (SeGO) protocol tags
- Supports tag and mutual authentication
- 902 to 928 MHz RF range operation in North America
- Real-time clock
- Tag read buffering
- Programmable RF output power
- Programmable frequency
- Supports up to two AT5720 Check Tags
- Multiplexes up to four antennas

Parapanel Antenna

Standard Features

- Asymmetrical broadcast pattern
- Low-profile design
- Weatherproof enclosure
- UV-tolerant and corrosion-resistant construction

Part Number/Price

Part #	Description	Price
Consult	Please consult sales engineer to ensure proper system for application	Consult

RFID Access Tags



157184



157185

Standard Features

RFID Access Tags

- Interior mounting on non-metallized windshield
- Impact resistant, molded plastic case
- Slim profile
- Non-battery for extended service life (AT5402)
- Dual-frequency (915 and 2450 MHz, AT5406)

Specifications

Frequency Range:

AT5402: 902 to 928 MHz
AT5406: 902 to 928 MHz/2425 to 2475 MHz

Typical working range with TransCore®

Encompass 4:
AT5402: 5 to 10 ft (1.5 to 3 m)
AT5406: 5 to 35 ft (1.5 to 11 m)

Polarization:

Parallel with longer side

Data Capacity:

Up to 10 alphanumeric characters (60 available bits) or Wiegand 26 to 54 bit formats

Power Source:

AT5402: Beam-powered
AT5406: Lithium battery

Dimensions:

(L × W × H)
AT5402: 3.60 × 2.30 × 0.27 in
(92 × 59 × 7 mm)
AT5406: 4.50 × 2.50 × 0.70 in
(114 × 64 × 18 mm)

Weight:

AT5402: 1.4 oz. (40 g)
AT5406: 3.5 oz. (99 g)

Service Life:

AT5402: >10 years
AT5406: Eight-year lithium battery (typical life)

Case Material:

Weatherproof, polycarbonate alloy, UV stabilized

Mounting Surface:

Interior: Non-metallic windshield

Mounting Method:

Semi-permanent mounting: Double-sided tape
Removable mounting: Adhesive-backed hook-and-loop material attached to the tag and vehicle windshield

Operating Temperature:

-40 °F to 185 °F (-40 °C to 85 °C)

Part Number/Price

Part #	Description	Price
157184	AT5402 windshield tag beam power	\$42.00
157185	AT5406 windshield tag with battery	\$58.00
159518	Programming fee	\$310.00

Note: Programming fee applies if ordering fewer than 100 tags

AUTOMATED
TICKETING

RFID Transportation Tags



Standard Features

RFID Transportation Tags

- Harsh environment durability
- Factory sealed case
- Non-battery for extended service life (AT5412)
- Dual-frequency (915 and 2450 MHz, AT5414)

Specifications

Frequency Range:

AT5412: 902 to 928 MHz
AT5414: 902 to 928 MHz/2425 to 2475 MHz

Typical Working Range with TransCore®

Encompass 4:
AT5412: 5 to 10 ft (1.5 to 3 m)
AT5414: 5 to 35 ft (1.5 to 11 m)

Polarization:

Parallel with longer side

Data Memory Capacity:

SeGo and eGo Modes: 2048 bits
ATA Mode: 60 bits

Power Source:

AT5412: Beam
AT5414: Lithium battery for a typical eight-year life

Dimensions:

(L × W × H)
AT5412: 9.30 × 2.38 × 0.69 in
(236 × 60 × 18 mm)
AT5414: 9.32 × 2.39 × 0.75 in
(237 × 61 × 19 mm)

Weight:

AT5412: 5.3 oz (150.2 g)
AT5414: 6.6 oz (187 g)

Case Material:

Weatherproof, polycarbonate, UV-stabilized case that is sealed after programming

Mounting Surface:

Any smooth metallic surface

Mounting Method:

Mount to any flat smooth metal surface using bolts, screws or blind rivets

Operating Temperature:

-40 °F to 185 °F (-40 °C to 85 °C)

Part Number/Price

Part #	Description	Price
86399	AT5412 transportation tag 1/2 frame beam power	\$63.00
157188	AT5414 transportation tag 1/2 frame with battery	\$79.00
159518	RFID programming tag	\$310.00

Note: Programming fee applies if ordering less than 100 tags

HID RFID Cards



Standard Features

HID RFID Cards

- Offer sufficient read/write memory to store multiple biometric templates
- Available in a 2 or 16 application area configuration
- Offer multiple, securely separated areas to enable numerous applications, including the HID standard access control application
- Future growth for new read/write applications
- ISO 15693 and 14443B2 standards for read/write contactless communication
- Cost-effective way to enhance the security of your access control installation
- Close range

HID RFID Readers



Standard Features

HID RFID Readers

- More powerful and versatile access control
- User-friendly proximity technology
- Uses the 13.56 MHz technology platform
- High-intensity, three-color light bar provides clear, visual feedback, even in direct sunlight
- Selectable, distinct tone sequences indicate status conditions
- All RF data transmission between the card and reader is encrypted using a secure algorithm
- Close range

Specifications

Typical Maximum Read Range*:

2.5 to 4.5 in (6.3 to 11.4 cm) with HID iCLASS® card
1.0 in (2.5 cm) with HID iCLASS key
1.0 in (2.5 cm) with HID iCLASS tag
1.5 to 2.0 in (3.8 to 5.0 cm) with HID iCLASS prox
1 to 2 in (2.5 to 5.0 cm) with MIFARE® card (serial number only)

*Using ISO 15693 mode (except MIFARE®). Dependent upon installation conditions. Please note that all iCLASS credentials are available in either a 2K bits (256 Bytes) or 16Kbits (2 KBytes) configuration.

Dimensions:

(L × W × H)
3.30 × 0.85 × 4.80 in
(84 × 22 × 122 mm)

Material:

UL94 polycarbonate

Power Supply:

10 to 16VDC reverse voltage protected
Linear supply recommended

Current Requirements (Avg/Peak):

80/260mA at 12VDC

Operating Temperature:

-31 °F to 150 °F (-35 °C to 65 °C)

Operating Humidity:

5 to 95% relative humidity non-condensing

Weight:

8.8 oz (249.5 g)

Transmit Frequency:

13.56 MHz

Cable Distance:

Wiegand interface: 500 ft (150 m)
Recommended cable is ALPHA 1295 (22AWG)
Five-conductor stranded with overall shield or equivalent. Additional conductors may be required to connect all outputs.

Pending Certifications:

Taiwan, Singapore, Germany VdS

Approvals:

UL 294/cUL
FCC Certification
Canada Certification
CE Mark (Europe)
New Zealand
Australia c-Tick

Part Number/Price

Part #	Description	Price
176452	HID smart card reader, includes Wiegand to RS232 converter and mounting hardware	\$695.00
88792	Power supply, IDEC 12VDC output, 85 VAC input, required for 176452 above	\$140.00
85902	iClass Smart Card pack 1 to 25 13.56 MHz	\$155.00
85903	iClass Smart Card pack 26 to 50 13.56 MHz	\$155.00
85904	iClass Smart Card pack 51 to 75 13.56 MHz	\$155.00
85905	iClass Smart Card pack 76 to 100 13.56 MHz	\$155.00

Keyfob and disc tags optional—consult for price.

HID Long Range Readers



Standard Features

- Discreet hands-free authentication solution for long range parking, gate control and truck identification
- IP65 rating allows outdoor mounting
- Supports Wiegand standards
- Requires Wiegand converter, consult with a sales engineer with application specifics

Specifications

Dimensions:

(L × W × H)
9.10 × 9.10 × 2.75 in
(231 × 231 × 70 mm)

Color:

Black

Mounting:

Drill mounting box to meet application
Drill points provided for US and EU wall boxes, and
75 mm, 100 mm and 200 mm VESA mounts

Storage Temperature:

-67 °F to 185 °F (-55 °C to 85 °C)

Operating Temperature:

-30 °F to 150 °F (-35 °C to 65 °C)

Operating Humidity:

5% to 95% relative humidity non-condensing

Rating/Material:

IP65
UL94 Polycarbonate

Typical Maximum Read Range:

9.8 to 16.4 ft
(3 to 5 m) (Mexico)

Transmit Frequency:

865 to 868 MHz / 902 to 928 MHz
dependent on regional regulations

Approvals:

UL 294/cUL, CB Scheme
FCC Certification
IC (Canada)
CE (Europe)
IFETEL (Mexico)

Part Number/Price

Part #	Description	Price
184458	Reader, long range HID	\$1,695.00
184459	UHF credentials (factory programming required)	\$15.00
184466	Windshield mount	\$10.50

AUTOMATED
TICKETING

Photo Eyes



Retro-reflective

Standard Features

- Many varieties available for both truck scale and dynamic weighing applications
- Arrange photo eyes to keep wheels on scale
- Rugged outdoor applications
- Reflective types work up to 17 ft (5.18 m) in clean conditions
- Quick disconnects for easy replacement
- Broken beams can signal a wheel off the scale or prevent a weighment in unattended systems
- Transmitter/receiver types work up to 17 ft in clean conditions

Part Number/Price

Part #	Description	Price
Photo Eyes		
78975	Allen-Bradley® photo eye retro-reflective sensor	\$340.00
78976	Photo eye reflector, 3 in diameter	\$29.00
78977	Quick disconnect photo eye cable, 12 ft, 5-Pin mini connector	\$145.00
Photo Switches		
165776	Kit, photo eye switch	\$1,395.00
103013	Photo switch receiver	\$300.00
103014	Photo switch transmitter	\$225.00
196361	Photo switch transmitter (DC)	\$265.00
103015	Photo switch quick connector receiver	\$145.00
103016	Photo switch quick connector transmitter	\$115.00
130398	Mounting swivel assembly for 103013 and 103014	\$31.00
156532	Photo eye stand kit	\$425.00

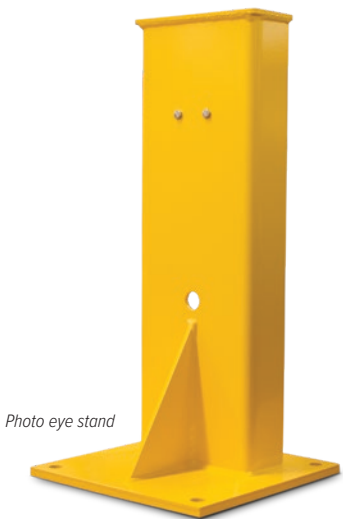
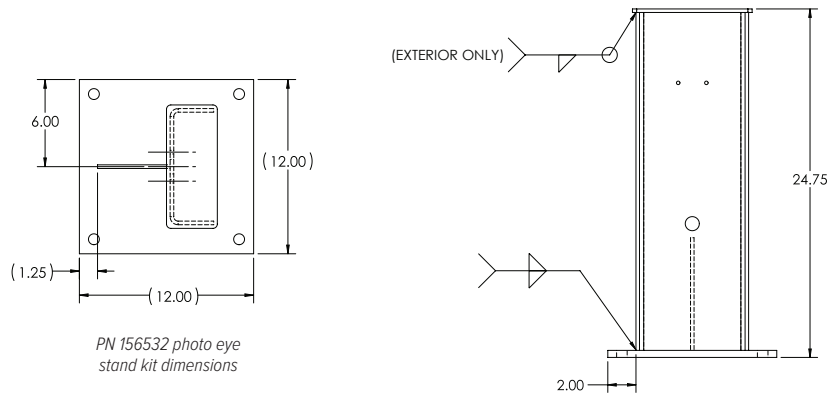


Photo eye stand



PN 156532 photo eye stand kit dimensions

Dimensions listed in inches

Traffic Light Kits



Traffic Light

Standard Features

Light

- Housing meets or exceeds ITE specifications
- Stainless steel hardware
- 8 in LED lights, enclosure injection molded polycarbonate
- LED modules
- Compliant to ITE UTCSH - LED circular signal
- Temperature compensated power supplies for long LED life
- Conformal coated power supplies
- Intertek/ETL certified and listed on ETL certification program
- 135 VAC

Pole

- 4.5 in outer dimension aluminum pole
- Cast aluminum base mounts to concrete with four anchor bolts
- Base underside has integrated anchor bolt guide to ensure proper anchor placement.
- Removable 8 in access door for cable splicing and bolt attachments (H x W) 15 x 13-3/4 in

Part Number/Price

Part #	Description	Est. Weight	Price
23146	2 Section, With Mounting Hardware for 4.5 Inch Pole 120VAC LED	25 lb	\$865.00
85789	Kit, traffic light pole. Includes 8 ft aluminum pole, base & four 18 in anchors. Bolts with nuts and washers. Option: Pole cap (PN 179172)	70 lb	\$1,055.00
179172	Aluminum pole cap, 4.5 in (for use when traffic light not mounted on pole)	-	\$59.00
87111	Side mount brackets include 12 in nipples and universal hubs, bracket, aluminum upper and lower assembly	10 lb	\$240.00
84504	Anchor bolt with nut washer	2 lb	\$13.00
160242	Kit; dual traffic light	-	\$5,395.00
160208	Control panel, dual traffic light	-	\$975.00
156106	Buzzer box, 115 VAC	-	\$795.00
163734	Switch box, remote (includes legend plates for Zero, Print, Tare, Cancel and Accept)	-	\$315.00



Anchor bolt with nut and washer



Side Mount Brackets



Control Panel



Buzzer Box



Switch Box

Traffic Light Pole



AUTOMATED
TICKETING



Standard Features

- Moisture and puncture resistant speaker
- Three-layer steel baffle protects speaker from tampering
- Hands-free communication
- Weather and vandal resistant
- FRP enclosure

Specifications

Wiring:
CAT5 to Ethernet adapter

Dimensions:
(L × W × H)
14 × 12 × 8 in

Communication:
PC software functions as base station for networked intercom system

TalkMaster FOCUS, download directly from digitalacoustics.com/talkmaster-focus-software-download/

Part Number/Price

Part#	Description	Price
215451	Ethernet intercom	\$2,625.00

Ethernet Serial Servers



Part Number/Price

Part#	Description	Price
159118	Ethernet serial server dual serial port (two-terminal blocks) one Ethernet 10/100 (RJ45) DIN rail mounting	\$550.00
197373	Ethernet serial server four serial port (DB-9) one Ethernet 10/100 (RJ45) DIN rail mounting	\$1,000.00