

# Counting Scales

## TABLE OF CONTENTS

<b>RICE LAKE COUNTERPART®</b> .....	<b>242</b>
<i>Configurable Counting Indicator</i>	
<b>DIGI® DC-782 SERIES</b> .....	<b>245</b>
<i>Portable Counting Scales</i>	
<b>DIGI® DC-788 SERIES</b> .....	<b>246</b>
<i>Industrial Counting Scales</i>	
<b>DIGI® S-YC SERIES</b> .....	<b>248</b>
<i>Remote Scale Base Platforms</i>	
<b>A&amp;D® FC-I/SI SERIES</b> .....	<b>249</b>
<i>High Resolution Counting Scales</i>	
<b>A&amp;D® HC-I SERIES</b> .....	<b>250</b>
<i>Industrial Counting Scales</i>	
<b>OHAUS® RANGER™ COUNT 3000</b> .....	<b>251</b>
<i>Industrial Counting Scales</i>	
<b>DIGI® DMC-782 SERIES</b> .....	<b>252</b>
<i>Portable Coin Counting Scales</i>	

The following product names, logos, brands and other trademarks featured or referred to within this publication are the property of their respective trademark holders.

# Rice Lake Counterpart®

Configurable Counting Indicator

COUNTING SCALES



## Standard Features

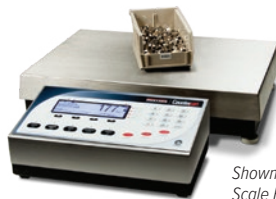
- AC operated (battery operation is optional)
- LCD graphic transmissive display for indoor viewing
- Single- or dual-channel models with serial scale input
- Mix and match platforms with console
- Four setpoint outputs for counting
- Two RS-232 ports for connecting peripherals
- Ethernet TCP/IP
- Scanner input (RS-232)
- PC software utility (Revolution®) for setup
- 150 item memory

## Options:

- Battery
- USB connection for USB keyboard
- WeighVault™ software for ID entry, data registers and reports

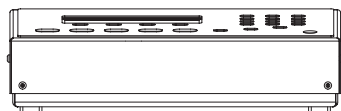
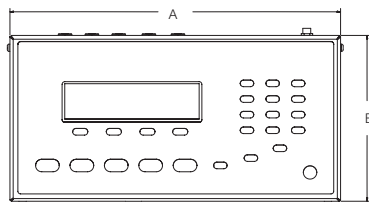


DIG® Scale Base



Shown with BenchMark® Scale Base and Bracket

Dimensions			
A	12.3 in (312.4 mm)	C	3.94 in (100 mm)
B	6.17 in (156.7 mm)		



## Approvals



## Specifications

### Power Source:

Input: 100-240 VAC, 47-63 Hz, 5 watts,  
U.S. power cord  
Output: 9-12 V, 1.5 A max

### Excitation Voltage:

5 VDC

### Analog Signal Input Range:

0-4.5 mV/V

### Analog Specifications:

Grad minimum: .3 µV/grad  
Input sensitivity: 1.5 µV/grad recommended  
Zero adjustment range: 0-100%  
or per region settings  
A/D conversion rate: 7.5, 15, 30 samples per second  
Load cells per scale: 8 × 350 Ω; 16 × 700 Ω  
Scale channels: 1 or 2  
Linearity: ±0.017 full scale

### Circuit Protection:

RFI, EMI, ESD protection

### Digital I/O:

Four

### Display:

Viewing area: 240 × 64 pixels, transmissive VGA  
liquid crystal display (LCD) with adjustable contrast

### Keypad:

24 buttons, full keypad (alpha numeric)

### Resolution:

Weight display resolution: up to  
100,000 graduations  
Counting resolution: 1/1,000,000

### Communications and Setpoint:

Two RS-232 ports support up to 115,200 bps  
20 mA  
Ethernet port  
Setpoint output

### Status Annunciators:

PCS, motion, low battery, insuff, recomp, scale  
number, gross, net, zero

### Units of Measure:

Pounds, kilograms, grams, ounces

### Prints:

Standard EPL label format; format is changeable to  
work with virtually any printer

### Optional Battery:

Type: Lithium-ion  
Charge time: 6 to 8 hours  
Charge cycles: 400-1,200  
Estimated runtime: 24-32 hours with one 350 Ω  
load cell base

### Operating Temperature:

32° F to 104° F (0° C to 40° C)

### Operating Humidity:

85%

### Physical Dimensions:

Indicator only (L × W × H): 12.25 × 6.25 × 4.0 in  
(311.15 × 158.75 × 101.6 mm)

### Warranty:

Two-year limited warranty

### Approvals:

NTEP Certified CC 12-110  
CE Marked  
UL Listed  
Measurement Canada Approved

www.ricelake.com | Phone: 800-472-6703

RICE LAKE

# Rice Lake Counterpart®

Configurable Counting Indicator

## Part Number/Price

Part #	Model #	Capacity	Platter Dimensions	Est. Weight	Price
118788	CP single-channel indicator	Console only	-	10 lb (4.5 kg)	\$1,050.00
120770	CP dual-channel indicator	Console only	-	10 lb (4.5 kg)	\$1,080.00
132429	CP single-channel, EU power cord	Console only	-	10 lb (4.5 kg)	\$1,050.00
132431	CP dual-channel, EU power cord	Console only	-	10 lb (4.5 kg)	\$1,080.00
<b>Single Channel with DIGI® S-YC base system and bracket</b>					
155089	CP-1	1 lb × 0.0001 lb (500 g × 0.05 g)	7.9 × 5.6 in (200 × 142 mm)	35 lb (15.9 kg)	\$1,450.00
155090	CP-2	2 lb × 0.0002 lb (1 kg × 0.0001 kg)	9.6 × 6.9 in (244 × 175 mm)	35 lb (15.9 kg)	\$1,450.00
155092	CP-5	5 lb × 0.0005 lb (2.5 kg × 0.0002 kg)	13.4 × 11 in (341 × 284 mm)	35 lb (15.9 kg)	\$1,395.00
155094	CP-10	10 lb × 0.001 lb (5 kg × 0.0005 kg)	13.4 × 11 in (341 × 284 mm)	35 lb (15.9 kg)	\$1,395.00
155097	CP-25	25 lb × 0.002 lb (10 kg × 0.001 kg)	13.4 × 11 in (341 × 284 mm)	35 lb (15.9 kg)	\$1,395.00
155101	CP-50	50 lb × 0.005 lb (25 kg × 0.002 kg)	13.4 × 11 in (341 × 284 mm)	35 lb (15.9 kg)	\$1,395.00
<b>Dual Channel with DIGI S-YC base system and bracket (second channel available for use with other bases)</b>					
155115	CP-1	1 lb × 0.0001 lb (500 g × 0.05 g)	7.9 × 5.6 in (200 × 142 mm)	35 lb (15.9 kg)	\$1,500.00
155116	CP-2	2 lb × 0.0002 lb (1 kg × 0.0001 kg)	9.6 × 6.9 in (244 × 175 mm)	35 lb (15.9 kg)	\$1,500.00
155117	CP-5	5 lb × 0.0005 lb (2.5 kg × 0.0002 kg)	13.4 × 11 in (341 × 284 mm)	35 lb (15.9 kg)	\$1,470.00
155118	CP-10	10 lb × 0.001 lb (5 kg × 0.0005 kg)	13.4 × 11 in (341 × 284 mm)	35 lb (15.9 kg)	\$1,470.00
155119	CP-25	25 lb × 0.002 lb (10 kg × 0.001 kg)	13.4 × 11 in (341 × 284 mm)	35 lb (15.9 kg)	\$1,470.00
155120	CP-50	50 lb × 0.005 lb (25 kg × 0.002 kg)	13.4 × 11 in (341 × 284 mm)	35 lb (15.9 kg)	\$1,470.00
<b>Dual Channel with BenchMark® base system and bracket (second channel available for use with other bases)</b>					
125113	CP-50BM	50 lb × 0.01 lb (20 kg × 0.005 kg)	12 × 18 in (304.8 × 457.2 mm)	45 lb (20.4 kg)	\$1,525.00
125116	CP-100BM	100 lb × 0.02 lb (50 kg × 0.01 kg)	12 × 18 in (304.8 × 457.2 mm)	45 lb (20.4 kg)	\$1,525.00

## Options/Accessories

Part #	Description	Price
124692	Rechargeable lithium-ion battery option	\$310.00
53828	14-Pin Y-cable, connects 2 remote DIGI bases	\$90.00
32375	Connector, 14-Pin Amphenol load cell (can be soldered to home run cable)	\$21.00
125062	Ethernet quick access coverplate for Counterpart	\$21.00
130537	USB connection for USB keyboard only	\$160.00
179211	QWERTY keyboard, USB interface (requires 130537 USB interface option)	\$47.50
125079	Quick access 9-Pin cover plate	\$10.50
120767	Quick access 14-Pin Amphenol cover plate	\$15.75
125495	Wireless LAN card Wi-Fi 802.11 A/B, optional kit	\$600.00
125546	WeighVault™ software for Counterpart	\$265.00
118677	Operators manual (Part #129606 Spanish operator's manual)	\$26.50
121459	Front mount bracket for Rice Lake BenchMark™ scales, S-XL bases	\$53.00
154700	Front mount bracket for DIGI S-YC scales	\$53.00
121474	Firmware download cable	\$37.00
121501	Stand, angled free standing for table top	\$84.00
128063	Power supply, 12 V (power cord sold separately)	\$58.00
15438	Power cord	\$20.00
<b>Printers/Cables</b>		
167515	GoDEX DT2x printer, 2 in direct thermal, 203 dpi, real time clock 110/240 VAC	\$365.00
65617	Direct thermal label, (W × L): 2.25 × 4.5 in, 1 in core, 5 in OD perfed	\$17.50
41276	Cable DB9M to blunt end RS-232 cable for DT2	\$70.00
78860	Ethernet cross cable for direct connection to WeighVault™	\$40.00
<b>Scanner</b>		
121495	Kit, QuickScan QD2131 RS-232 scanner, cable stand and DB9 quick connect cable (supplies power to scanner, reduces battery life)	\$355.00


# DIGI® DC-782 Series

Portable Counting Scales

## Specifications

**Internal Resolution:**

1/500,000

**Weight Display Resolution:**

1/7,500 (1/6,000)

**Display:**

Liquid crystal display (LCD) with backlight

Weight: five-digit

Unit weight: five-digit

Quantity: six-digit

**Power Source:**

120 VAC power supply (U.S. power cord)

**Number of Scale Channels:**

One local scale

**Memory Items:**

25

**Optional Battery:**

Charge time: 12-14 hours

Estimated runtime: 300 hours (no backlight)

**Operating Temperature:**

14° F to 104° F (-10° C to 40° C)

**Dimensions:**

(W × L × H): 335.7 × 349.7 × 123.5 mm

(13 × 13 × 5 in)

**Platter Size:**

300 × 225 mm (12 × 8.9 in)

**Warranty:**

Two-year limited warranty



## Standard Features

- Liquid crystal display (LCD) with yellow backlight
- 10 preset keys for product ID
- 25 item memory
- Buzzer - low, ok, high

## Part Number/Price

Part #	Description	Capacity	Est. Weight	Price
108248	DC-782	6 lb × 0.001 lb	11 lb (5 kg)	\$557.00
108249	DC-782	15 lb × 0.002 lb	11 lb (5 kg)	\$557.00
108250	DC-782	30 lb × 0.005 lb	11 lb (5 kg)	\$557.00
108251	DC-782	60 lb × 0.01 lb	11 lb (5 kg)	\$557.00

## Options/Accessories

Part #	Description	Price
108516	Rechargeable battery	\$46.00
73382	AC adapter 110 VAC	\$62.00
108518	AC adapter 110 - 230 VAC (prior to May 2011 production units)	\$46.00
109429	Manual	\$26.00
73296	Carrying case	\$205.00

# DIGI<sup>®</sup> DC-788 Series

Industrial Counting Scales

COUNTING SCALES



## Standard Features

- Auto-recomputing function
- Negative sampling and counting (count out of a full container)
- Bright green LED
- Simultaneous weight display, unit weight, tare and quantity
- Net/gross weight display
- Lb/kg weight display conversion
- Full-duplex RS-232 output to PC or printer
- AC or rechargeable battery operation (battery optional)
- Choice of unit weight per thousand or average piece weight
- Remote scale capability
- 100 product look up registers
- NTEP for non-counting applications
- Remote scale interface

## Approvals



## Specifications

### Internal Resolution:

1/1,000,000

### Weight Display Resolution:

1/5,000 NTEP, other selections capacity dependent

### Display:

LED  
Weight: five-digit  
Unit weight: five-digit  
Quantity: seven-digit  
Tare: five-digit

### Power Source Consumption:

AC: 115, 60 Hz  
Optional battery: 6 V, 5.0 Ah

### Printer Compatibility:

Zebra<sup>®</sup> GK-420D  
Zebra GK-420T  
Epson<sup>®</sup> TM-U220 tape  
STAR<sup>®</sup> SP512 tape  
Epson TM-U295 ticket

### Zero Adjust Range:

±127% full scale

### Input Sensitivity:

0.4 to 4 mV/V

### Load Cell Excitation:

5 VDC

### Number of Scale Channels:

One remote scale, one 350 Ω load cell

### Memory Items:

100 items

### Load Cell Input Connector:

Amphenol 14-Pin

### Computer Interface:

RS-232 DB-9M connection

### Battery Operation:

24 hours of continuous usage

### Charge Time:

8-10 hours

### Operating Temperature:

14° F to 104° F (-10° C to 40° C)

### Dimensions:

(W × D × H): 14 × 13.75 × 4.5 in (354 × 349 × 115 mm)

### Warranty:

Two-year limited warranty

### Approvals:

NTEP Certified CC 07-015 (10 lb - 100 lb) Class III for weigh mode only 10 lb to 100 lb-scales only

www.ricelake.com | Phone: 800-472-6703

RICE LAKE

246

# DIGI<sup>®</sup> DC-788 Series

Industrial Counting Scales

## Part Number/Price

Part #	Description	Weighing Resolution	Platter	Est. Weight	Price
88928 *	DC-788, 2 lb (1 kg)	0.0002 lb (0.0001 kg)	7 × 10 in (178 × 254 mm)	15 lb (7 kg)	\$875.00
88929	DC-788, 10 lb (5 kg)	0.002 lb (0.001 kg)	10 × 13 in (254 × 330 mm)	15 lb (7 kg)	\$875.00
88930	DC-788, 25 lb (10 kg)	0.005 lb (0.002 kg)	10 × 13 in (254 × 330 mm)	15 lb (7 kg)	\$875.00
88931	DC-788, 50 lb (25 kg)	0.01 lb (0.005 kg)	10 × 13 in (254 × 330 mm)	15 lb (7 kg)	\$875.00
88932	DC-788, 100 lb (50 kg)	0.02 lb (0.01 kg)	10 × 13 in (254 × 330 mm)	15 lb (7 kg)	\$1,095.00
Part #	Description	Platter Dimensions	Overall Dimensions	Est. Weight	Price
<b>Optional DIGI S-YC Remote Scale Bases</b>					
154835	500 g (1 lb)	7.9 × 5.6 in (201 × 143 mm)	13.4 × 11.1 × 3.5 in (341 × 284 × 90 mm)	7.7 lb (3.5 kg)	\$775.00
154836	1 kg (2 lb)	9.6 × 6.9 in (244 × 177 mm)	13.4 × 11.1 × 3.5 in (341 × 284 × 90 mm)	7.7 lb (3.5 kg)	\$775.00
154838	2.5 kg (5 lb)	13.4 × 11.1 in (341 × 284 mm)	13.4 × 11.1 × 4.75 in (341 × 284 × 120 mm)	11 lb (5 kg)	\$700.00
154839	5 kg (10 lb)	13.4 × 11.1 in (341 × 284 mm)	13.4 × 11.1 × 4.75 in (341 × 284 × 120 mm)	11 lb (5 kg)	\$700.00
154840	10 kg (20 lb)	13.4 × 11.1 in (341 × 284 mm)	13.4 × 11.1 × 4.75 in (341 × 284 × 120 mm)	11 lb (5 kg)	\$700.00
154841	25 kg (50 lb)	13.4 × 11.1 in (341 × 284 mm)	13.4 × 11.1 × 4.75 in (341 × 284 × 120 mm)	11 lb (5 kg)	\$700.00

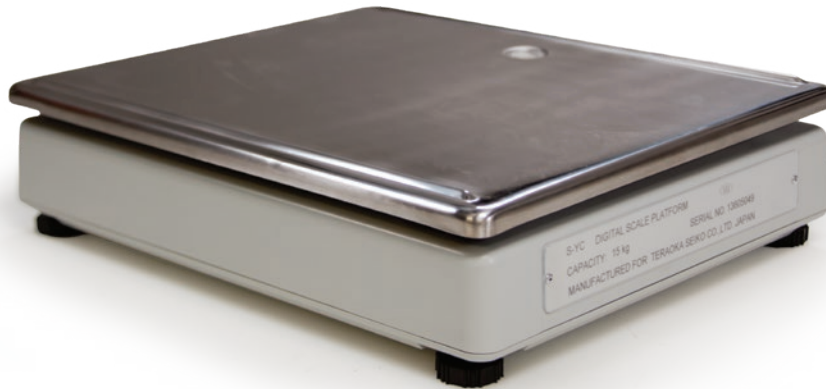
\*Non-NTEP

## Options/Accessories

Part #	Description	Price
88933	Rechargeable battery—lead acid type	\$80.00
73386	Anti-static sample tray	\$26.00
32375	14-Pin load cell connector, Amphenol (remote base, non-DIGI)	\$21.00
35319	14-Pin load cell connector with 20 ft cable	\$72.00
91685	Additional operating and service manual	\$26.00
70056	Nine-pin printer cable to DT4, G500	\$40.00
72440	Nine-pin printer cable to Epson TM-U220/TM-U295 SP512	\$67.00
66535	Nine-pin cable to PC, null modem cable, to be used with Zebra printers	\$46.00
91214	AC adapter 110-230 VAC, U.S. plug	\$46.00
<b>Printers</b>		
192720	Zebra GK-420D, direct thermal printer	\$595.00
192722	Zebra GK-420T, thermal transfer printer	\$695.00
65617	Label, 2.25 in × 4.5 in, direct thermal	\$17.50

# DIGI® S-YC Series

Remote Scale Base Platforms



## Specifications

**Output Impedance:**

350 ±5 ohms

**Insulation Resistance:**

>500 Megohms

**Rated Output:**

1.0016 mV/V

**Color Code:**

Green.....+ Output  
 Yellow..... – Output  
 Black..... Shield  
 White..... – Input  
 Red..... + Input

**Load Cell Type:**

K-Type DIGI cell

**Load Cell Cable Length:**

118 in (3 m)

**Operating Temperature:**

14° F to 104° F (-10° C to 40° C)

**Warranty:**

Two-year limited warranty

## Standard Features

- Stainless steel platter
- ABS injection-molded plastic base
- Single-point strain gauge load cell
- Adjustable legs
- Leveling bubble
- 14-Pin connector on three meter cable

## Part Number/Price

Part #	Description	Platter Dimensions	Overall Dimensions	Est. Weight	Price
154835	500 g (1 lb)	7.9 × 5.6 in (201 × 143 mm)	13.4 × 11.1 × 3.5 in (341 × 284 × 90 mm)	7.7 lb (3.5 kg)	\$775.00
154836	1 kg (2 lb)	9.6 × 6.9 in (244 × 177 mm)	13.4 × 11.1 × 3.5 in (341 × 284 × 90 mm)	7.7 lb (3.5 kg)	\$775.00
154838	2.5 kg (5 lb)	13.4 × 11.1 in (341 × 284 mm)	13.4 × 11.1 × 4.75 in (341 × 284 × 120 mm)	11 lb (5 kg)	\$700.00
154839	5 kg (10 lb)	13.4 × 11.1 in (341 × 284 mm)	13.4 × 11.1 × 4.75 in (341 × 284 × 120 mm)	11 lb (5 kg)	\$700.00
154840	10 kg (20 lb)	13.4 × 11.1 in (341 × 284 mm)	13.4 × 11.1 × 4.75 in (341 × 284 × 120 mm)	11 lb (5 kg)	\$700.00
154841	25 kg (50 lb)	13.4 × 11.1 in (341 × 284 mm)	13.4 × 11.1 × 4.75 in (341 × 284 × 120 mm)	11 lb (5 kg)	\$700.00



# A&D® FC-i/Si Series

High Resolution Counting Scales

## Specifications

**Internal Resolution:**  
Si Series: 1/5,000,000  
FC-i Series: 1/1,000,000

**Display:**  
Vacuum fluorescent display (VFD)  
Seven segment

**Power Source (included):**  
110 VAC 50/60 Hz AC adapter  
230 VAC 50/60 Hz AC adapter

**Minimum Sample Unit Weight:**  
500 si - 0.0001 g, 5000 si - 0.001 g  
500 si - 0.0005 g, 1000 i - 0.001 g  
2000 i - 0.002 g, 5000 i - 0.005 g  
10 Ki - 0.01 g, 20 Ki - 0.02 g  
50 Ki - 0.05 g

**Memory Items:**  
500 ID - six-digit ID, unit weight, tare weight, comparator limits, accumulator and 12-digit ID name

**Weight Sensor:**  
Si - Super hybrid sensor (SHS)  
FC-i - Strain gauge load cell

**Operating Temperature:**  
Si: 41° F to 104° F (5° C to 40° C)  
FC-i: 14° F to 104° F (-10° C to +40° C)

**Dimensions:**  
(L × W × H): 13.0 × 18.2 × 4.6 in (330 × 462 × 117 mm)

**Warranty:**  
Two-year limited warranty



## Standard Features

- 500 ID memory storage
- LED keypad prompting for intuitive operator use
- Automatic Counting Accuracy Improvement (ACA)
- Display function - Hi/OK/Lo
- Rugged aluminum die-cast frame with splash-proof display and keyboard

## Options

- Remote scale

## Part Number/Price

Part #	Model #	Description	Min Sample Weight	Pan Size	Price
108351	FC-500Si	1lb × 0.00005 lb (500 g × .02 g)	0.0001 g	5 × 5 in (127 × 127 mm)	\$1,800.00
108352	FC-5000Si	10 lb × 0.0005 lb (5 kg × .2 g)	0.001 g	6.5 × 6.5 in (165 × 165 mm)	\$1,800.00
108353	FC-1000i	2 lb × 0.0002 lb (1 kg × .1 g)	0.001 g	8 × 6 in (203 × 152 mm)	\$1,320.00
108354	FC-2000i	5 lb × 0.0005 lb (2 kg × .2 g)	0.002 g	11.8 × 11 in (300 × 279 mm)	\$1,320.00
108355	FC-5000i	10 lb × 0.001 lb (5 kg × .5 g)	0.005 g	11.8 × 11 in (300 × 279 mm)	\$1,320.00
108356	FC-10Ki	20 lb × 0.002 lb (10 kg × 1 g)	0.01 g	11.8 × 11 in (300 × 279 mm)	\$1,320.00
108357	FC-20Ki	50 lb × 0.005 lb (20 kg × 2 g)	0.02 g	11.8 × 11 in (300 × 279 mm)	\$1,320.00
108358	FC-50Ki	100 lb × 0.01 lb (50 kg × 5 g)	0.05 g	11.8 × 11 in (300 × 279 mm)	\$1,320.00

## Options/Accessories

Part #	Model #	Description	Price
108360	FC-05i	Remote scale connection	\$149.00
97613	TB:636	AC adapter 120 V - standard with unit	\$44.00
97631	TB:164	AC adapter 240 V	\$52.00

# A&D® HC-i Series

Industrial Counting Scales



## Specifications

### Internal Resolution:

HC-3 Ki, 6 Ki, 30 Ki: 1/600,000  
HC-15 Ki: 1/750,000

### Display:

Seven segment liquid crystal display (LCD)  
Character height: pcs 18.6 mm  
Unit weight: 11.4 mm

### Power Source (included):

AC adapter or SLA battery option  
Operating time approximately 80 hours without interface

### Memory Items:

99 weight registers

### Weight Sensor:

Load cell

### Operating Temperature:

14° F to 104° F (-10° C to 40° C)

### Dimensions:

(L × W × H): 12.4 × 13 × 5 in  
(315 × 331 × 126 mm)

### Warranty:

Two-year limited warranty

## Standard Features

- Sealed removable display unit
- Automatic Counting Accuracy Improvement (ACAI)
- Audible Weighing Assist beeping function (AWA)
- Display function - Hi/OK/Lo
- Accumulation function
- Full-digital calibration function
- Auto power-off function

## Options

- Rechargeable battery
- RS-232C

## Part Number/Price

Part #	Model #	Description	Pan Size	Price
112837	HC-3Ki	6 lb × 0.001 lb (3 × 0.0005 kg)	11.8 × 8.3 in (300 × 211mm)	\$721.00
112838	HC-6Ki	15 lb × 0.002 lb (6 × 0.001 kg)	11.8 × 8.3 in (300 × 211mm)	\$721.00
112839	HC15Ki	30 lb × 0.005 lb (15 × 0.002 kg)	11.8 × 8.3 in (300 × 211mm)	\$743.00
112840	HC-30Ki	60 lb × 0.01 lb (30 × 0.005 kg)	11.8 × 8.3 in (300 × 211mm)	\$743.00

## Options/Accessories

Part #	Model #	Description	Price
112841	HC-03i	RS-232C for HC-i	\$81.00
112842	HC-06i	Rechargeable battery pack	\$44.00
97766	TB:662	AC adapter, 120 V, standard with unit	\$44.00

# OHAUS® Ranger™ Count 3000

Industrial Counting Scales

## Specifications

### Internal Resolution:

1/500,000

### Display:

Seven-segment 1/30,000, six-digit

### Power Source (included):

100-240 VAC, 50-60 Hz internal universal power supply

### Battery:

Lead acid, 210 hours, 12 hours recharge

### Number or Scale Channels:

Optional second channel

### Memory Items:

(30)12-digit part number, average piece weights, check counting or checkweighing parameters, tare weights, accumulated weights or counts

### Operating Temperature:

14° F to 104° F (-10° C to 40° C)

### Dimensions:

(L × W × H): 12.2 × 12.9 × 4.6 in (311 × 327 × 117 mm)

### Platter Size:

11.8 × 8.9 in (300 × 225 mm)

### Approvals:

NTEP Certified 13-022 3000 e  
CAN/CSA-C22.2 No. 61010-1-04  
UL Std. No. 61010-1 (2nd edition)

### Warranty:

One-year limited warranty



## Standard Features

- Weigh in kilograms, pounds, grams or ounces
- 30-item data storage
- Three backlit LCD display windows
- RS-232 output
- Quick stabilization

## Approvals



## Options

- Ethernet
- Second platform

## Part Number/Price

Part #	Model #	Description (lb) (kg) (oz) (g)	Est. Weight	Price
157273	RC31P1502	3 × 0.0001 lb (1.5 × 0.00005 kg) (48 × 0.002 oz) (1,500 × 0.05 g)	12 lb (5.45 kg)	\$891.00
157275	RC31P3	6 × 0.0002 lb (3 × 0.0001 kg) (96 × 0.05 oz) (3,000 × 0.1 g)	12 lb (5.45 kg)	\$891.00
157277	RC31P6	15 × 0.0005 lb (6 × 0.0002 kg) (240 × 0.01 oz) (6,000 × 0.2 g)	12 lb (5.45 kg)	\$891.00
157278	RC31P15	30 × 0.001 lb (15 × 0.0005 kg) (480 × 0.02 oz) (15,000 × 0.5 g)	12 lb (5.45 kg)	\$891.00
157279	RC31P30	60 × 0.002 lb (30 × 0.001 kg) (960 × 0.05 oz) (30,000 × 1 g)	12 lb (5.45 kg)	\$891.00

## Options/Accessories

Part #	Description	Price
157280	Remote second scale option kit	\$168.00
154638	Ethernet kit	\$168.00

# DIGI<sup>®</sup> DMC-782 Series

Portable Coin Counting Scales



## Specifications

### Internal Resolution:

1/500,000

### Weight Display Resolution:

1/7,500 or 1/6,000

### Display:

Liquid crystal display (LCD) with backlight

Weight: five-digit

Denomination: five-digit

Quantity/Amount: six-digit

### Power Source:

120 AC power supply or optional rechargeable battery

### Optional Battery:

Charge time: 12-14 hours

Battery life: 300 hours (no backlight)

### Number of Scale Channels:

One local scale

### Memory Items:

18

### Operating Temperature:

14° F to 104° F (-10° C to 40° C)

### Dimensions:

(W × L × H): 13.2 × 13.7 × 4.8 in

(335.7 × 349.7 × 123.5 mm)

### Platter Size:

(W × L): 12 × 8.9 in (300 × 225 mm)

### Warranty:

Two-year limited warranty

## Standard Features

- Liquid crystal display (LCD) with yellow backlight
- 18 preset keys for product ID
- Programmable denomination unit weight and tare weight
- Accumulation
- Toggle display: count and money value
- Total amount calculation utilizing reverse counting

## Options

- Rechargeable battery
- Carrying case

## Part Number/Price

Part #	Description	Capacity	Est. Weight	Price
111317	DMC-782	6 lb × 0.001 lb	11 lb (5 kg)	\$610.00
111318	DMC-782	15 lb × 0.002 lb	11 lb (5 kg)	\$610.00
111319	DMC-782	60 lb × 0.01 lb	11 lb (5 kg)	\$610.00

## Options/Accessories

Part #	Description	Price
15438	Power cord	\$20.00
111781	Manual	\$26.00
108516	Rechargeable battery	\$46.00
73296	Carrying case, hard shell with locking latches	\$205.00