

COMPRESSION DISK

Page 234 1200, ALLOY STEEL/ALUMINUM



Resistance to extraneous forces allows for high fatigue life, less stringent mounting alignment and lesser possibility of reading errors. This design permits smaller, portable and compact testing machines. Capacities range from 1,000 to 100,000 lb. Complete with 10 ft of load cell cable.

Page 235 3200, STAINLESS STEEL



Designed specifically for difficult applications in harsh environments, these units incorporate welded stainless steel diaphragms to resist corrosion and seal against moisture intrusion. These load cells provide high accuracy, resistance to off-center loads with minimum error, excellent temperature specifications and low-height envelope for ease of installation. Capacities range from 5,000 to 100,000 lb. Complete with 20 ft of load cell cable.

TENSION/COMPRESSION

Page 236 SML, LOW HEIGHT



This low-height load cell is designed for tension and compression measurement. It features an anodized aluminum construction for capacities ranging from 5 to 300 lb. It is also available in stainless steel for capacities ranging from 500 to 2,000 lb. Features 5 ft of load cell cable.

Page 237 WMC, STAINLESS STEEL, ROD END



Constructed of stainless steel, environmentally sealed and designed for tension or compression. Capacities range from 15,000 to 200,000 lb.

Page 238 WMC MINIATURE SEALED, STAINLESS STEEL



Constructed from stainless steel in capacities ranging from 5 to 10,000 lb. The extremely miniature envelope allows for a wide variety of weighing applications in tension or compression. Features 5 ft of cable.

COMPRESSION DISK
1200 Series

Low-profile Alloy Steel/Aluminum, Environmentally Sealed, IP67



Picture is a representation of model 1211

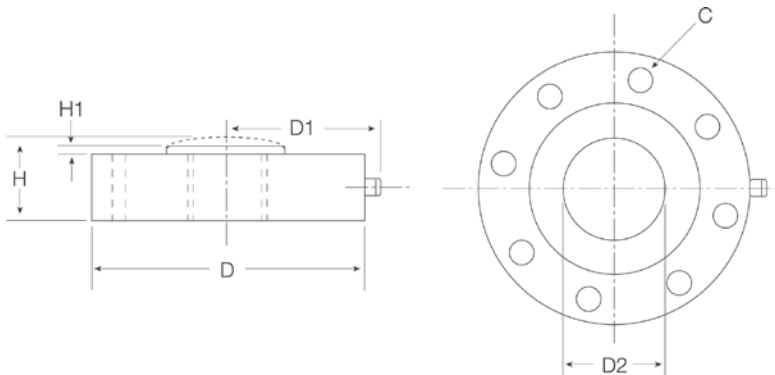
Order Information

Load Rating	Part #	Est. Weight	Price
Aluminum			
Model 1211			
1,000 lb	36132	4 lb	Consult
2,000 lb	36133	4 lb	Consult
Alloy Steel			
Model 1211			
5,000 lb	36134	5 lb	Consult
10,000 lb	36135	5 lb	Consult
Model 1221			
25,000 lb	36136	8 lb	Consult
50,000 lb	36137	8 lb	Consult
Model 1231			
100,000 lb	36138	22 lb	Consult

Consult factory for load cell bases

Dimensions

Rated Capacity	C	D	D1	D2	H	H1
lb/in						
1,000 to 10,000	0.28 dia 8 holes	4.12	2.63	1.34	1.37	0.12
25,000 to 50,000	0.34 dia 4 holes	4.75	2.95	1.57	1.75	0.12
100,000	0.47 dia 12 holes	7.50	4.32	3.12	2.25	0.25



Specifications

- Full Scale Output:**
1,000 to 2,000 lb: 2.0 mV/V
5,000 to 100,000 lb: 4.0 mV/V
- Bridge Resistance:**
350 ohm, nominal
- Material/Finish:**
1,000 to 2,000 lb: Aluminum
5,000 to 100,000 lb: Alloy steel
- Temperature:**
Operating:
0 °F to 150 °F (-18 °C to 65 °C)
- Seal Type:**
Environmentally sealed, IP67
- Safe Overload:**
150% full scale
- Rated Excitation:**
5 to 10 VDC (20 V maximum)
- Nonlinearity:**
0.05% full scale
- Hysteresis:**
0.02 to 0.04% full scale
- Insulation Resistance:**
5,000 megohm
- Cable Length:**
10 ft
- Cable Color Code:**
Red +Excitation
Black -Excitation
Green +Signal
White -Signal
- Warranty:**
Two-year limited

INTERFACE®



Picture is a representation of model 3211

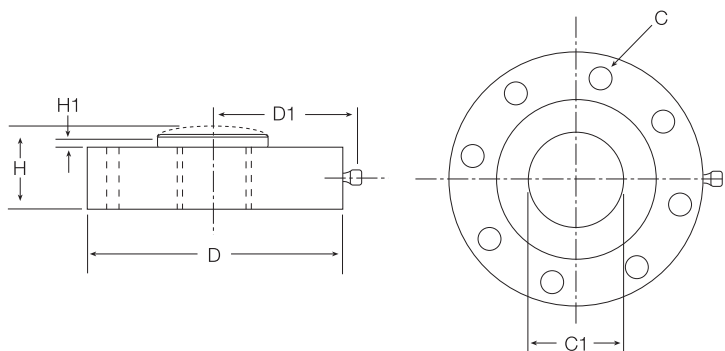
Order Information

Load Rating	Part #	Est. Weight	Price
Model 3211			
5,000 lb	36140	5 lb	Consult
10,000 lb	36141	5 lb	Consult
Model 3221			
25,000 lb	36142	8 lb	Consult
50,000 lb	36143	8 lb	Consult
Model 3231			
100,000 lb	36144	10 lb	Consult

Consult factory for load cell bases

Dimensions

Rated Capacity	C	C1	D	D1	H	H1
lb/in						
5,000 to 10,000	0.28 dia 8 holes	1.34	4.12	2.56	1.37	0.12
25,000 to 50,000	0.34 dia 4 holes	1.57	4.75	2.87	1.75	0.12
100,000	0.47 dia 12 holes	3.12	7.50	4.25	2.25	0.25



Specifications

Full Scale Output:
4.0 mV/V

Bridge Resistance:
350 ohm nominal

Material/Finish:
Stainless steel

Temperature:
Operating:
0 °F to 150 °F (-18 °C to 65 °C)

Seal Type:
Hermetically sealed, IP66/68

Safe Overload:
150% full scale

Rated Excitation:
5 to 10 VDC (20 V maximum)

Nonlinearity:
0.05% full scale

Hysteresis:
0.04% full scale

Insulation Resistance:
5,000 megohm

Cable Length:
20 ft

Cable Color Code:
Red +Excitation
Black -Excitation
Green +Signal
White -Signal

Warranty:
Two-year limited



Picture is a representation of actual product

Order Information

Load Rating	Part #	Est. Weight	Price
5 lb	185097	1 lb	Consult
10 lb	185098	1 lb	Consult
25 lb	185099	1 lb	Consult
50 lb	185100	1 lb	Consult
100 lb	185101	1 lb	Consult
200 lb	185102	1 lb	Consult
300 lb	185103	1 lb	Consult
500 lb	185104	1 lb	Consult
1,000 lb	185105	1 lb	Consult
2,000 lb	185106	1 lb	Consult

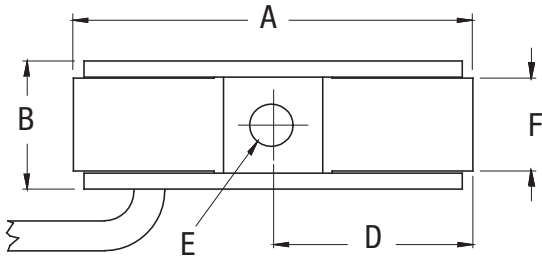
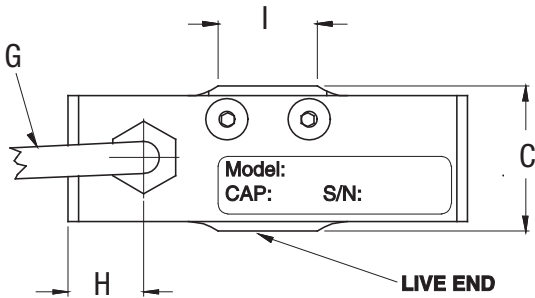
Dimensions

Rated Capacity	A	B	C	D	E	F	G	H	I
lb/in									
5 to 10	1.80	0.52	0.73	0.90	10-32 UNF .20 deep	0.34	0.13	0.29	0.50
25 to 100	2.00	0.64	0.73	1.00	1/4-28 UNF .25 deep	0.46	0.13	0.38	0.50
200 to 1,000	2.12	0.89	0.98	1.06	3/8-24 UNF .38 deep	0.71	0.13	0.46	0.57
2,000	2.80	1.16	1.24	1.40	1/2-20 UNF .49 deep	1.00	0.13	0.75	0.77

Specifications

- Full Scale Output:**
2.0 mV/V
- Bridge Resistance:**
350 ohm nominal
- Material/Finish:**
5 to 300 lb: Aluminum
500 to 2,000 lb: Stainless steel
- Temperature:**
Operating:
-65 °F to 200 °F (-54 °C to 93 °C)
- Safe Overload:**
5 to 10 lb: 800%
25 to 2,000 lb: 150%
- Rated Excitation:**
15 VDC maximum
- Nonlinearity:**
5 to 300 lb: ± 0.05% full scale
500 to 1,000 lb: ± 0.10% full scale
2,000 lb: ± 0.20% full scale
- Hysteresis:**
5 to 300 lb: ± 0.05% full scale
500 to 1,000 lb: ± 0.10% full scale
2,000 lb: ± 0.20% full scale
- Insulation Resistance:**
> 5,000 megohm
- Cable Length:**
5 ft
- Cable Color Code:**
Red +Excitation
Black -Excitation
White +Signal
Green -Signal
- Warranty:**
One-year limited

INTERFACE®





Picture is a representation of actual product

Specifications

Full Scale Output:

2.0 mV/V

Bridge Resistance:

350 ohm nominal

Material/Finish:

Stainless steel

Temperature:

Operating:

-65 °F to 250 °F (-54 °C to 121 °C)

Safe Overload:

150% full scale

Rated Excitation:

15 VDC Max

Nonlinearity:

15 to 30 k: ± 0.10% full scale

100 k: ± 0.15% full scale

200 k: ± 0.20% full scale

Hysteresis:

± 0.15% full scale

Insulation Resistance:

> 5,000 megohm

Connector Pin Out:

A +Excitation

B +Sense

C -Excitation

D -Sense

E -Signal

F +Signal

Warranty:

One-year limited

Order Information

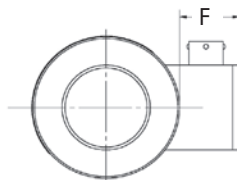
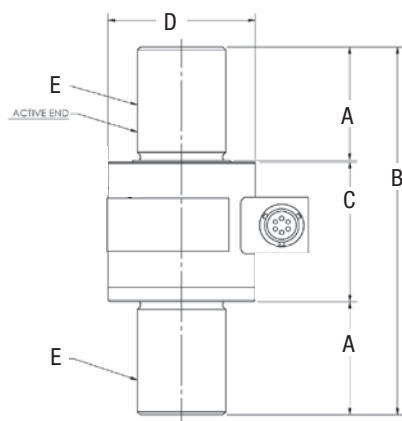
Load Rating	Part #	Est. Weight	Price
15,000 lb	185079	5 lb	Consult
20,000 lb	185080	5 lb	Consult
30,000 lb	185081	5 lb	Consult
50,000 lb	185583	5 lb	Consult
100,000 lb	185082	20 lb	Consult
200,000 lb	185083	40 lb	Consult

Load Cell Cable Option

	Part #	Est. Weight	Price
10 ft cable with PTO6A-10-6S (SR) connector	185459	2 lb	Consult

Dimensions

Rated Capacity	A	B	C	D	E	F
lb/in						
15,000 to 50,000	2.00	6.50	2.47	2.50	1.5-12 UNF	1.01
100,000	3.00	10.00	3.97	3.50	2.50-12 UNF	1.28
200,000	4.00	13.00	4.97	4.47	3.50-8 UNF	1.36



TENSION/COMPRESSION

WMC Miniature Sealed

Stainless Steel



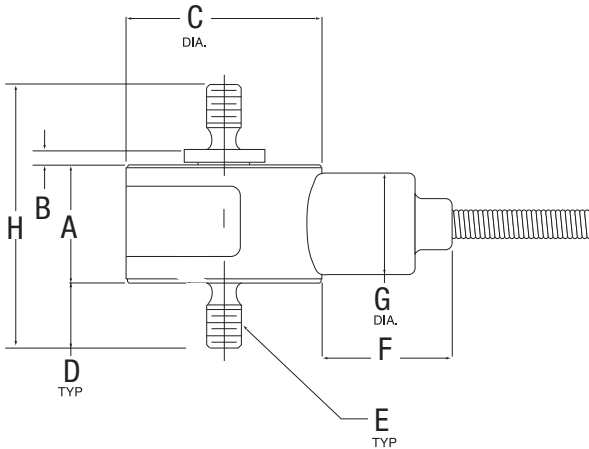
Picture is a representation of actual product

Order Information

Load Rating	Part #	Est. Weight	Price
5 lb	185090	1 lb	Consult
10 lb	185091	1 lb	Consult
25 lb	185092	1 lb	Consult
50 lb	185093	1 lb	Consult
100 lb	185094	1 lb	Consult
250 lb	185095	1 lb	Consult
500 lb	185096	1 lb	Consult
1,000 lb	185084	1 lb	Consult
2,000 lb	185085	1 lb	Consult
3,000 lb	185086	1 lb	Consult
5,000 lb	185087	1 lb	Consult
7,500 lb	185088	1 lb	Consult
10,000 lb	185089	1 lb	Consult

Dimensions

Rated Capacity	A	B	C	D	E	F	G	H
lb/in								
5 to 10	0.45	0.06	0.75	0.25	6-32 UNC	0.50	0.39	1.01
25 to 100	0.52	0.03	1.00	0.25	10-32 UNF	0.50	0.39	1.05
250 to 500	0.53	0.03	1.00	0.38	1/4-28 UNF	0.50	0.39	1.32
1,000	0.53	0.03	1.00	0.38	0.25-28 UNF	0.50	0.39	1.32
2,000 to 3,000	0.72	0.03	1.00	0.50	0.38-24 UNF	0.50	0.39	1.75
5,000	0.94	0.03	1.25	0.63	0.50-20 UNF	0.50	0.39	2.23
7,500 to 10,000	1.09	0.03	1.38	0.88	0.75-16 UNF	0.50	0.39	2.88



Specifications

- Full Scale Output:**
2.0 mV/V
- Bridge Resistance:**
350 ohm nominal
- Material/Finish:**
Stainless steel
- Temperature:**
Operating:
-65 °F to 250 °F (-54 °C to 121 °C)
- Safe Overload:**
150% full scale
- Rated Excitation:**
12 VDC
- Nonlinearity:**
5 to 500 lb: ± 0.15% full scale
1,000 to 10,000 lb: ± 0.20% full scale
- Hysteresis:**
5 to 500 lb: ± 0.15% full scale
1,000 to 10,000 lb: ± 0.20% full scale
- Insulation Resistance:**
> 5,000 megohm
- Cable Length:**
5 ft
- Cable Color Code:**
Red +Excitation
Black -Excitation
White +Signal
Green -Signal
- Warranty:**
One-year limited