

Pipe Lever Scales

TABLE OF CONTENTS

Pipe Lever Scale..... 806

Pipe Lever Scale Questionnaire 807

Product names, logos, brands and other trademarks featured
or referred to within this publication are the property of their respective trademark holders.

Pipe Lever Scale



Approvals



Measurement
Canada
Approved



Part Number/Price

| Part # | Dimensions | Est. Weight | Price |
|----------------------------------|--------------------|-------------|-------------|
| 25,000 lb | | | |
| 29587 | 62 5/8 × 62 5/8 in | 532 lb | \$4,700.00 |
| 29586 | 60 1/2 × 66 in | 528 lb | \$4,700.00 |
| 29588 | 66 1/2 × 91 in | 640 lb | \$4,700.00 |
| 29589 | 64 × 64 in | 538 lb | \$4,700.00 |
| 35008 | 62 × 92 in | 561 lb | \$4,700.00 |
| 35009 | 62 × 105 in | 720 lb | \$4,700.00 |
| 40409 | 72 × 72 in | 618 lb | \$4,700.00 |
| 83433 | 64 3/4 × 64 3/4 in | 567 lb | \$4,700.00 |
| 25,000 lb Stainless Steel | | | |
| 46264 | 62 5/8 × 62 5/8 in | 405 lb | \$10,400.00 |
| 46265 | 60 1/2 × 66 in | 550 lb | \$10,400.00 |
| 46266 | 66 1/2 × 91 in | 610 lb | \$10,400.00 |
| 50172 | 64 × 64 in | 550 lb | \$10,400.00 |
| 50173 | 62 × 92 in | 680 lb | \$10,400.00 |
| 50174 | 62 × 105 in | 720 lb | \$10,400.00 |
| 40,000 lb | | | |
| 39152 | 5 × 5 ft | 1,885 lb | \$11,800.00 |
| 39153 | 6 × 6 ft | 1,975 lb | \$11,800.00 |
| 39154 | 7 × 7 ft | 2,220 lb | \$11,800.00 |
| 39155 | 8 × 8 ft | 2,310 lb | \$11,800.00 |
| 39156 | 9 × 9 ft | 2,545 lb | \$11,800.00 |
| 39157 | 10 × 10 ft | 2,635 lb | \$11,800.00 |
| 50,000 lb | | | |
| 39158 | 5 × 5 ft | 2,010 lb | \$12,100.00 |
| 39159 | 6 × 6 ft | 2,120 lb | \$12,100.00 |
| 39160 | 7 × 7 ft | 2,385 lb | \$12,100.00 |
| 39161 | 8 × 8 ft | 2,495 lb | \$12,100.00 |
| 39162 | 9 × 9 ft | 2,750 lb | \$12,100.00 |
| 39163 | 10 × 10 ft | 2,860 lb | \$12,100.00 |

Standard Features

- NTEP Certified and Measurement Canada Approved models available
- RL20000 alloy steel load cell standard (prices include load cell and ITCM load cell assembly)
- Mild steel construction, black paint finish
- Stainless steel, hermetically sealed load cells available
- Custom sizes and capacities available from 5,000 to 60,000 lb

Specifications

End Load Capacity:

100% full scale

mV/V Output:

1.50 to 1.87 mV/V nominal

Cable Length:

20 ft (6.1 m)

Warranty:

One-year limited

Approvals:

NTEP 94-126

Class III/IIIL

Measurement Canada Approved, AM-5114,
Legal For Trade on sizes greater than 1.6 m,
or a capacity greater than 10,000 kg



*Custom sizes fit your tank/hopper system for fewer
modifications and less installation time.*

Pipe Lever Scale Questionnaire

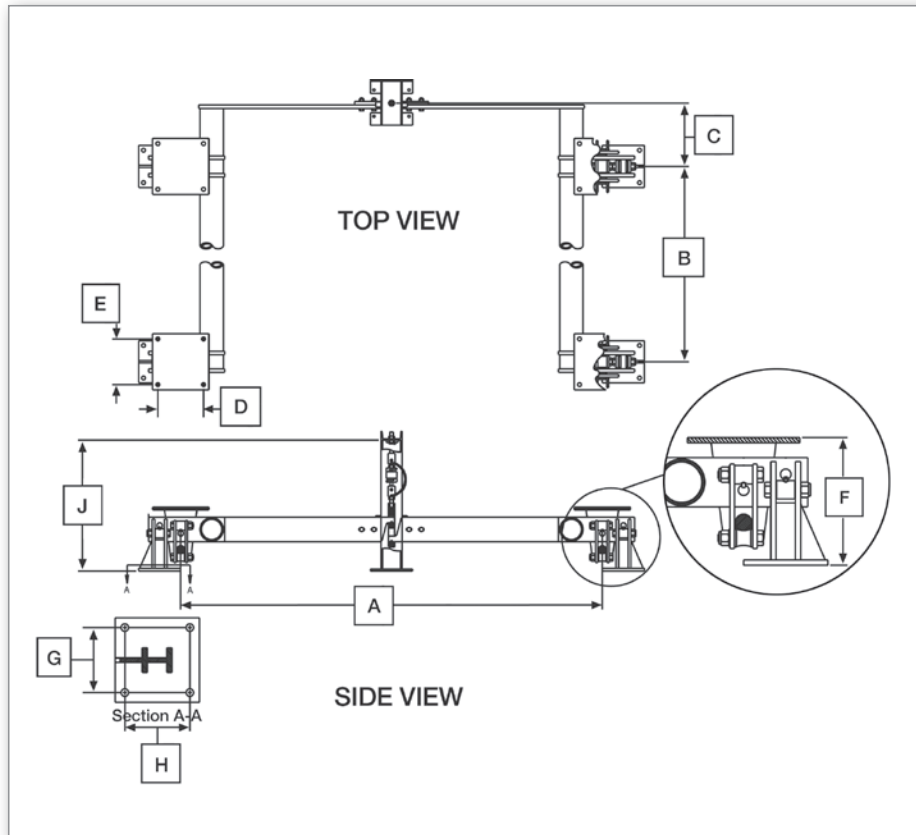
Customer Number:

Company:

Name: Date:

Phone: Fax: Email:

Instructions or subhead of outcome or expectations



These drawings are not to be used as installation guidelines

A

B

C

D *

E *

F

G **

H **

J

*Chair hole dimensions. **Stand hole dimensions

Capacity:

☐ 5K ☐ 10K ☐ 25K ☐ 30K
☐ 40K ☐ 50K ☐ 60K

Material:

☐ Stainless Steel ☐ Mild Steel

NTEP Required:

☐ Yes ☐ No

Finish:

Load Cell:

☐ Mild Steel ☐ Stainless Steel
Hermetically Sealed

Load Cell Model:

| | 5K/10K Total Load* | | 25K Total Load* | | 30K Total Load* | | 40K/60K Total Load* | |
|---|--------------------|----------|-----------------|----------|-----------------|----------|---------------------|----------|
| | Standard | Minimum | Standard | Minimum | Standard | Minimum | Standard | Minimum |
| A | — | 48.00 in | — | 48.00 in | — | 60.00 in | — | 60.00 in |
| B | — | 48.00 in | — | 48.00 in | — | 60.00 in | — | 60.00 in |
| C | 12.25 in | 4.50 in | 15.50 in | 7.00 in | 15.62 in | 7.00 in | 18.00 in | 7.00 in |
| D | 6.00 in | 6.00 in | 9.50 in | 8.75 in | 9.50 in | 8.75 in | 13.00 in | 12.00 in |
| E | 6.00 in | 6.00 in | 9.50 in | 8.75 in | 9.50 in | 8.75 in | 13.00 in | 12.00 in |
| F | 8.62 in | 8.62 in | 13.56 in | 13.56 in | 13.81 in | 13.81 in | 18.18 in | 18.18 in |
| G | 4.50 in | 3.50 in | 6.50 in | 4.75 in | 6.50 in | 4.75 in | 9.25 in | 6.50 in |
| H | 4.50 in | 3.50 in | 6.50 in | 4.75 in | 6.50 in | 4.75 in | 9.25 in | 6.50 in |
| J | 24.00 in | 24.00 in | 32.25 in | 32.25 in | 32.25 in | 32.25 in | 37.25 in | 37.25 in |
| <i>A × B must be equal to or less than 64 square feet. If over, consult factory.</i> | | | | | | | | |
| <i>A × B must be equal to or less than 100 square feet. If over, consult factory.</i> | | | | | | | | |
| <i>A × B must be equal to or less than 100 square feet. If over, consult factory.</i> | | | | | | | | |
| <i>A × B must be equal to or less than 100 square feet. If over, consult factory.</i> | | | | | | | | |

* Live and dead load

This image shows a full page of blank graph paper. The grid consists of small, equal-sized squares formed by thin, light gray lines. There are 20 columns and 20 rows of squares, creating a total of 400 square units. The background is white, and the grid lines extend to the edges of the page without any margins or additional markings.