

Software Systems

Table of Contents

VIRTUI2® 928
PC-Based HMI for iQUBE2®

VIRTUlink 929
Cloud Accessible Diagnostics and Scale Monitoring

Interchange 931
920i®/1280 Database Management Software

OnTrak® 932
Truck Data Management Software

WeighVault® 933

WinWedge® TAL Software 934
Wedge Software

OnTrak™ Enterprise 935
Truck Data Management Software

Myrias 936
Software Support

SOFTWARE SYSTEMS

Product names, logos, brands and other trademarks featured
or referred to within this publication are the property of their respective trademark holders.

VIRTUi2®

PC-Based HMI for iQUBE2®

SOFTWARE SYSTEMS



VIRTUi2®

VIRTUi2 is a Windows®-based desktop application that works with iQUBE2® to replicate simple indicator functionality ideal for system integrators and OEMs wanting to provide a PC-based solution. Load cells are individually monitored and calibrated, making setup easy.

Approvals



Part Number/Price

Part #	Description	Price
108436	Activation part number - requires machine ID and customer's email address	\$500.00

Standard Features

- Virtual front panel consists of display and five-button keypad
- Web browser-based iQUBE2 cell status
- Provides local and remote reporting of diagnostics and error conditions
- Up to four scales and one total scale
- Primary/secondary units configuration (lb, kg, short tons, metric tons, none)
- RS-232 communications at up to 460 kbps
- Electronic Data Processing (EDP) port over RS-232 and TCP/IP
- Printer port for output-only, simplex communications
- Two print formats
- Provides iQUBE2 configuration screen and iQUBE2 digital I/O configuration
- Supports iQUBE2 diagnostics with configurable error viewing
- Peak weight history
- Recalibration notification
- Concentrated load capacity (CLC)
- Section capacity

Specifications

Minimum System Requirements:

Windows® 8.1 and newer

Serial port

USB to serial converter, or Ethernet TCP/IP

for connection to iQUBE2

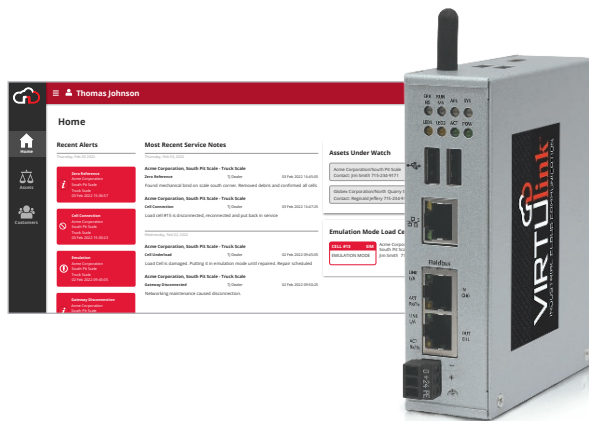
Additional serial ports are required for connections to printers/remote displays

Annunciators:

Units (lb, kg, short tons (tn), metric tons (t), NONE)
gross/net, motion, center of zero

Approvals:

NTEP CC 04-058 Class III/IIIL, 10,000d



VIRTUlink™ connects weighing equipment to the cloud, enabling data from networked devices to be utilized for a wide variety of business and operational decisions.

Standard Features

Data

- Sends raw and analyzed values from the scale to the cloud
- Supports long-term efficiency by providing scale and throughput records
- Expandable with support for multiple data points from indicators, junction boxes, auxiliary equipment, sensors, web relays and IP cameras

Diagnostics

- Enhanced onboard diagnostics identify cell noise, tests for linearity and zero-reference, and monitors drift
- Diagnostics are complemented by a unique load cell emulation feature which compensates for a failing load cell until a repair can be made
- Unmatched reaction time (500 cycles per second) brings accuracy to new levels

Dashboard

- Online portal to monitor scale status in real-time
- Receive alerts when scale is outside of programmable tolerances
- Remotely identify service needs and review technician notes
- Hosted on a cloud platform



Specifications

Communication:

Ethernet TCP/IP

Power Connector:

3-pin terminal block (3.5 mm)

Power Supply:

24 V DC \pm 6 V DC

Conformity with UL:

Use Class 2 power source, Over-voltage Category II

Current (at 24 V DC):

170 mA (typical)

Operating System:

Security-hardened Linux

Display:

8 LEDs (2 programmable)

Real-time Clock:

Capacitor buffered, maximum 7 days backup, maintenance free

Gateway Hardware/Communication

Memory:

Integrated memory 1 GB DDR3 RAM, SD card 32 GB
MLC NAND, Micro SD card

IT Interface:

1 x 10/100 Mbit, Microchip LAN9514
1 x RJ45 socket LAN connector

Required Accessible Ports:

http (80), https (443), MQTT (1883), MQTT over SSL (8883), AMQP (5672), AMQPS (5671)

Required Accessible Ports:

http (80)
https (443)
MQTT (1883)
MQTT over SSL (8883)
AMQP (5672)
AMQPS (5671)

Environment Protection:

IP20

Ambient Temperature:

Operation: -20 °C to 60 °C
Storage: -40 °C to 85 °C

Humidity Range:

10% to 95 % (95% at 40 °C)
relative humidity (non-condensing)

Use:

Indoor

Dimensions:

5.5 x 1.38 x 1.13 in
(140 mm x 35 mm x 105 mm)

Weight:

0.89 lb (400 g)

Metal Housing:

DIN top hat rail mount

Approvals:

UL – Nr. E221530 Vol D1
FCC – ID 2ANEG0001
IC – 24152-0001
KCC – No. R-C-HKR-ETP51EN-RE
UL Japan – No. 007-AH0211
RoHS
Conformance with EMC Directives:
CE Emission EN 55011:2009
Immunity IEC 61000-6-2/3, EN 61131-2
Electrostatic discharge (ESD)
(air and contact discharge method) EN 61000-4-2
Fast transient interferences (Burst) EN 61000-4-4
Surge voltage EN 61000-4-5

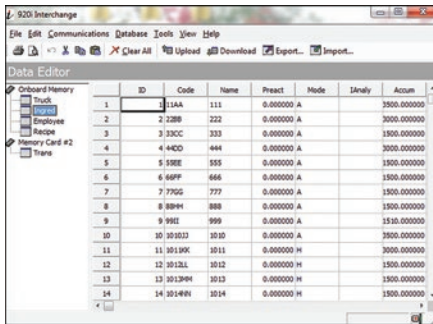
Part Numbers/Price

Part #	Description	Price
209604	VIRTUlink secure gateway	\$1,795.00
215212	Power supply for VIRTUlink secure gateway, 3 wire AC power and DC hookup 24 VDC cord (12 inches)	\$260.00
215213	24 VDC output wall adapter, 100 to 240VAC input, 12W	\$45.50
211283	VIRTUlink cloud-service contract, annual agreement	\$1,200.00

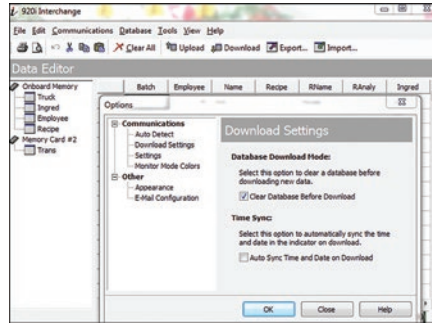
Specifications subject to change without notice.

The screenshot displays the VIRTUlink software interface for Thomas Johnson. The interface is divided into several sections:

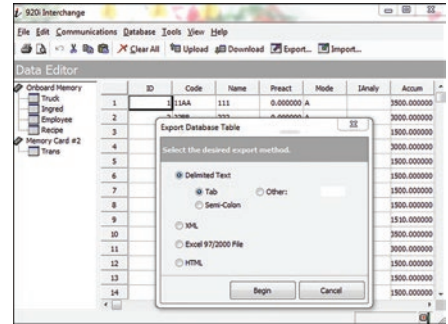
- Home:** Shows a grid of scale cells (CELL #1 to CELL #16) with their respective voltage (2.66811 mV) and weight (5320 lb) readings. Some cells show status icons like a checkmark or a red 'X' for 'NO CONNECTION'.
- Assets:** Lists the assets under watch, including 'Acme Corporation/South Pit Scale' and 'Globex Corporation/North Quarry Scale'.
- Customers:** Lists the customers, including 'Acme Corporation' and 'Globex Corporation'.
- Service Notes:** Displays a list of service notes with details such as DATE, TITLE, and Note.
- Alert History:** Shows a table of alerts with columns for Alert Type, Cell Name, Cell Board, and Date.
- Recent Alerts:** A summary of recent alerts, including 'Zero Reference', 'Cell Connection', and 'Emulation'.
- Most Recent Service Notes:** A summary of recent service notes, including 'Acme Corporation, South Pit Scale - Truck Scale'.
- Emulation Mode Load Cells:** A section for emulating load cells, showing 'CELL #13' in 'EMULATION MODE'.



Database Editor



Communication Settings for Download



Export or Import Data

Interchange database management software is used to set up a custom job file for each database you need to export. Manually or automatically run the job file by setting a predetermined time using Windows® Task Scheduler.

Part Number/Price

Part #	Description	Price
72809	Interchange database software	\$295.00

Standard Features

- Edit and manage databases
- Set up using an export job wizard
- Connect using RS-232, RS-485 or Ethernet TCP/IP
- Program will connect to the indicator and upload the current database structure
- Select the desired database
- Export database table file types: delimited text, XML, XLS, HTML

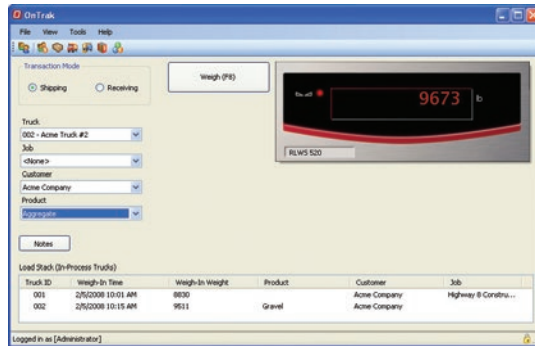
Specifications

Minimum System Requirements:

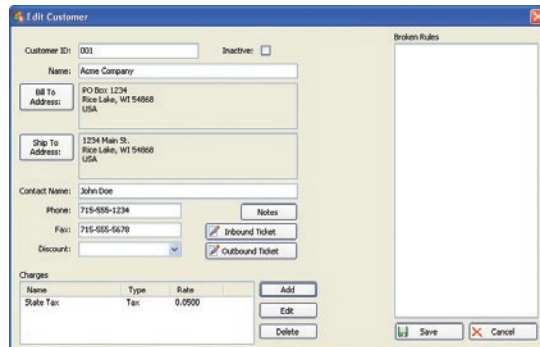
Windows® 7 or newer

OnTrak®

TRUCK SCALE DATA MANAGEMENT



Weigh Scale



Customer Account Information

Approvals



Part Numbers/Price

Part #	Description	Price
104787	OnTrak activation code	\$1,495.00
101062	OnTrak CD-ROM	\$84.00

OnTrak trial at www.ricelake.com/ontrak

Options/Accessories

Part #	Description	Price
Consult	Non-Rice Lake indicator interface	\$245.00
Consult	Custom reports	\$243.00/hour
Consult	Database configuration	\$243.00/hour
FLD-INSTALL	Field installation	\$1,395.00/weekday plus expenses
104789	Phone support, one hour	\$145.00
101003	Additional OnTrak manual	\$65.00

Standard Features

- Supports systems using Windows® 10 and newer
- Microsoft SQL Server Express client/server database (free edition)
- Comprehensive report filters
- User and administrator roles
- Backup and restore via SQL Server Management Studio freely available through Microsoft
- Unlimited charge/discount per product
- Ship or receive mode for each transaction
- Exclusive database for: customer, hauler, truck, product, job, price/discount, tax, transaction
- Ethernet TCP/IP or RS-232 connectivity
- Supports VIRTUi/VIRTUi2® or Rice Lake weight indicators
- .CSV transaction file export
- Supports one or two scales

Download OnTrak Software V2.14.00

Optional Features

- Image capture with Ethernet camera TCP/IP (requires SQL Server Standard or better through Microsoft)
- Interface to non-Rice Lake weight indicators
- Custom reports
- Database configuration
- Field installation and training
- Factory phone support

Specifications

System Requirements:

Windows® 10 and newer (x64 systems)

Databases:

10 GB max database size when using included Microsoft SQL Server Express
Unlimited database size when using a purchased edition (contact Microsoft for details on purchasing a licensed edition of SQL Server)

Communications:

Support for multiple printers
Supports all Rice Lake indicator interfaces
Supports VIRTUi/VIRTUi2 interface
920i based Automated Ticketing Kiosks
Optional drivers available for non-Rice Lake weight indicators

Transaction Ticket:

User defined ticket formatting

Reports:

Comprehensive report filters
Optional custom reports

Export Data:

File transfer via XML transaction; exported reports can be saved as PDF/XLS; configurable transaction data export in .CSV file format

Transaction Calculations:

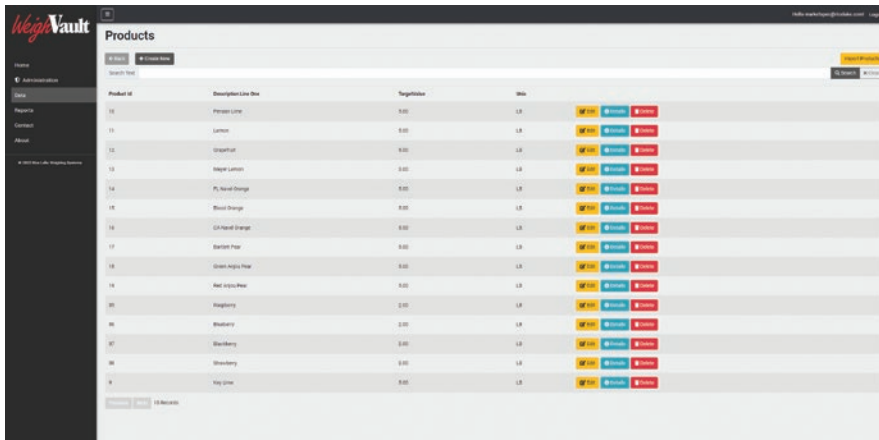
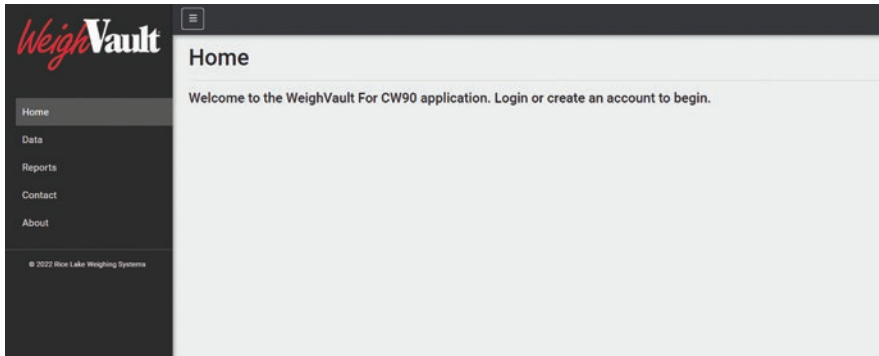
Unlimited product prices and discounts
Tax calculations (does not integrate directly to financial software)

Software Support:

Database configuration, field installation and training available
Phone support packages available
Contact Rice Lake for further options

Approvals:

NTEP CC 05-107



Counterpart Functions Only

Data Registers:

- ID code [32 characters]
- Unit weight [6 places]
- Tare weight [6 places]
- Units field
- Parts name [32 characters]
- Part description [32 characters]
- Lot number [32 characters]
- Location [12 characters]
- Inventory quantity [7 characters]

Reports:

- Part
- Inventory
- Activity
- Location

CW-90/90X Functions Only

Part Fields:

- Product ID [4 characters]
- Two descriptions fields [32 characters each]
- Target
- Tare
- Over
- Under
- Units

Reports:

- Transaction
- Productivity

Specifications

Minimum System Specifications:

CW-90X or Counterpart®
800+ MHz Intel® compatible processor
1 GB of RAM
750 MB hard drive space
TCP/IP connections to a CW-90, CW-90X or Counterpart

Recommended System Specifications:

1.0 GHz Intel compatible processor
2 GB of RAM
4 GB hard drive space
Windows 10 or newer (x64 systems)
TCP/IP connections to a CW-90, CW-90X or Counterpart

Network Requirements:

The PC running the WeighVault service must have a static IP address
Known IP address and subnet of the host PC;
if connecting via WLAN, known network SSID and security settings (pass keys and phrases)
Network policy must allow passwords of six characters

Standard Features

- Specialized PC software makes data entry easy
- Boost product ID storage to nearly limitless potential, and manage as many scales as necessary
- Eliminates front-panel entry of ID parameters
- Quickly program, edit and manage scales and each unique product ID right from your PC
- Stores the details of each transaction for either a single scale or multiple scales
- Collects data as transactions occur and provides detailed transaction and productivity reports
- Allows users to add, edit and access IDs over a network connection
- Reports can be exported into word processing, spreadsheet or PDF format

REST API designed to:

- Extend reach of WeighVault application
- Gain efficiencies for programmers integrating application specific content
- Enterprise dashboard view points
- Useful weight data related to IDs
- Boost system usage

Part Number/Price

Part #	Description	Price
117358	Software package, WeighVault for CW90/90X	\$265.00
125546	Software package, WeighVault for Counterpart	\$265.00

WinWedge® TAL Software

Wedge Software



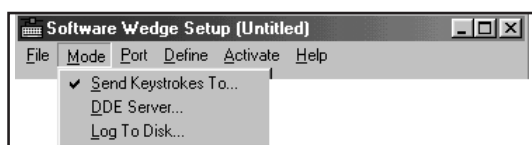
Standard Features

- Input scale or instrument data directly into Excel®, Access®, statistical software, LIMS, MMIs, or any Windows® application
- Transfers RS-232 data quickly, accurately and formatted to your exact specifications
- Powerful DDE options for collecting data from multiple devices simultaneously
- Extremely easy to set up and use

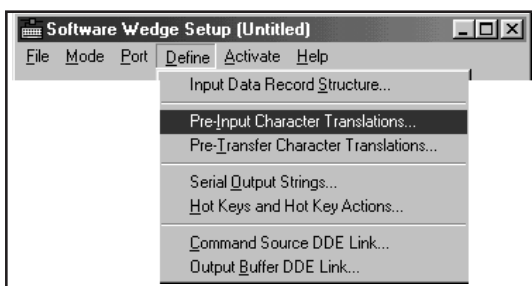
Part Number/Price

Part #	Description	Price
75351	WinWedge® TAL software, 32 Std	\$345.00
72304	WinWedge® TAL software, 32 Pro, TCP/Wedge	\$575.00

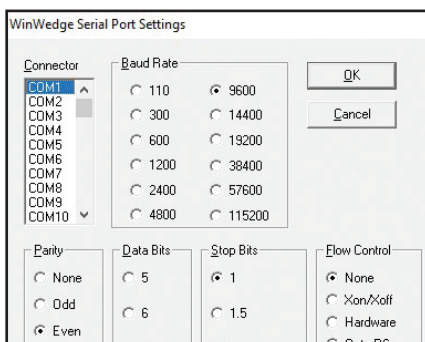
1. Select how you want the data collected:



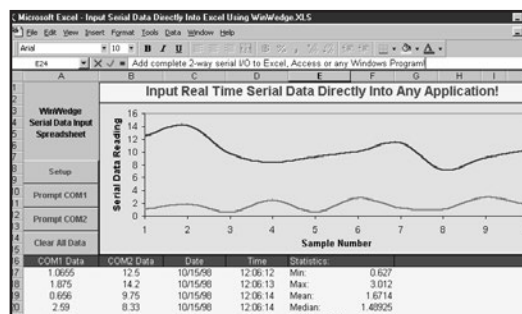
2. Choose the communication parameters for your serial device:



3. Define how you want the serial data to be parsed, filtered, and translated:



4. Activate WinWedge and watch your serial data "pop" into your application:



WinWedge Pro

Additional Features:

- Support for even the most complex devices and serial I/O with advanced data parsing, filtering, formatting and translation
- RS-232 data collection and I/O support, TCP/IP included with Pro version
- More advanced device control options
- Additional features such as math functions and virtual instrument mode

Specifications

System Requirements:

Any version of Windows®
Any Windows PC
4MB of RAM
2MB of hard disk space

Communications:

WinWedge can collect data on any serial port (RS-232 or RS-485) and even on multiple ports simultaneously. Also supports full device control.

Software Support:

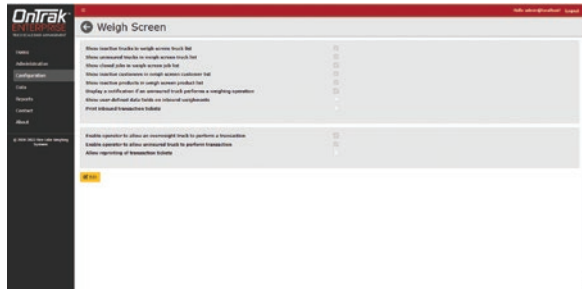
Rice Lake Weighing Systems offers field software support for our software packages. Contact our Service Department for software support. Software support is a chargeable service.



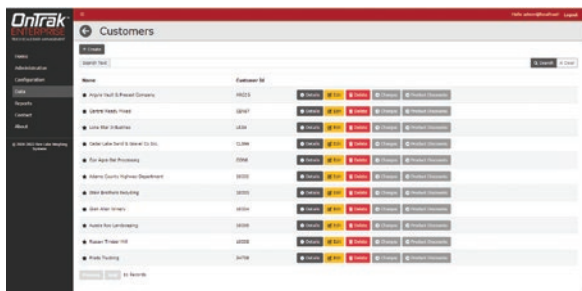
OnTrak™

ENTERPRISE

TRUCK SCALE DATA MANAGEMENT



Weigh Screen



Customer Screen Main

Approvals



pending

Part Numbers/Price

Part #	Description	Price
218502	OnTrak Enterprise Base Software	\$3,495.00
Modules		
218503	OnTrak Enterprise Kiosk Module	\$795.00
218504	OnTrak Enterprise API Module	\$695.00
218505	OnTrak Image Capture Module	\$695.00
218506	OnTrak Enterprise License Plate Recognition (LPR) Module	Consult
Annual Maintenance Agreements (AMA)		
218507	OnTrak Enterprise AMA for Base Software	\$699.00
218508	OnTrak Enterprise AMA for Kiosk Module	\$159.00
218509	OnTrak Enterprise AMA for API Module	\$139.00
218510	OnTrak Enterprise AMA for Image Capture Module	\$119.00
218511	OnTrak Enterprise AMA for LPR Module	Consult

Note: Annual Maintenance Agreements (AMA) are required. Billable after year two.

Options/Accessories

Part #	Description	Price
Consult	Non-Rice Lake indicator interface	\$295.00
Consult	Custom reports	\$245.00/hour
104789	Phone Support, one hour	\$145.00

Standard Features

- Comprehensive transaction management
- Unlimited charge and discount amounts per product
- Calculates tax
- Ship or Receive mode for each transaction
- Assign one of four security levels to each user
- Exclusive databases for customer, hauler, truck, product, job, price/discount, tax and transaction
- Filter reports to view relevant information
- Customize printed tickets
- Back up and restore via SQL Server Management Studio available through Microsoft
- Software supports unlimited number of scales, number of scales supported is dependent on user's hardware
- Web server for remote access, systems integration and data monitoring

Optional Features

- Kiosk interface
- REST API
- Image capturing
- License plate recognition

Specifications

System Requirements:

Windows® 10 or newer (x64 systems)

Databases:

10 GB max database size when using included Microsoft SQL Server Express
Unlimited database size when using a purchased edition of Microsoft SQL Server (required when using image capturing or license plate recognition)

Communications:

Supports all Rice Lake indicator interfaces and 1280 based Automated Ticketing Kiosks
Optional drivers available for non-Rice Lake weight indicators (Ethernet TCP/IP required)

Transaction Ticket:

User defined ticket formatting

Export Data:

File export of completed transactions via: XML, JSON, CSV or TXT

Software Support:

Database configuration, field installation and training available
Phone support packages available
Contact Rice Lake for further options

Approvals:

NTEP CC 05-107 (pending)

