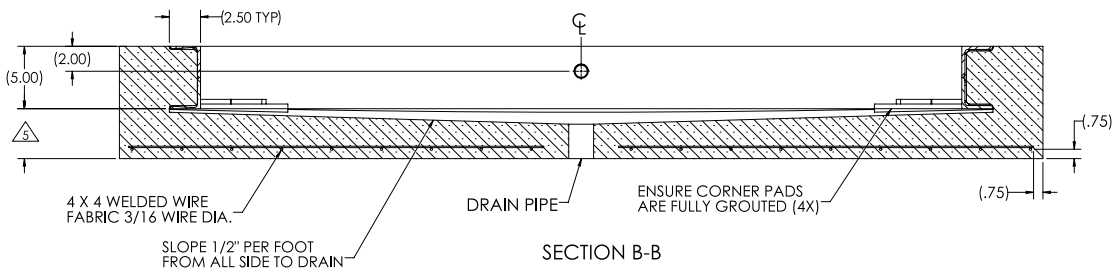
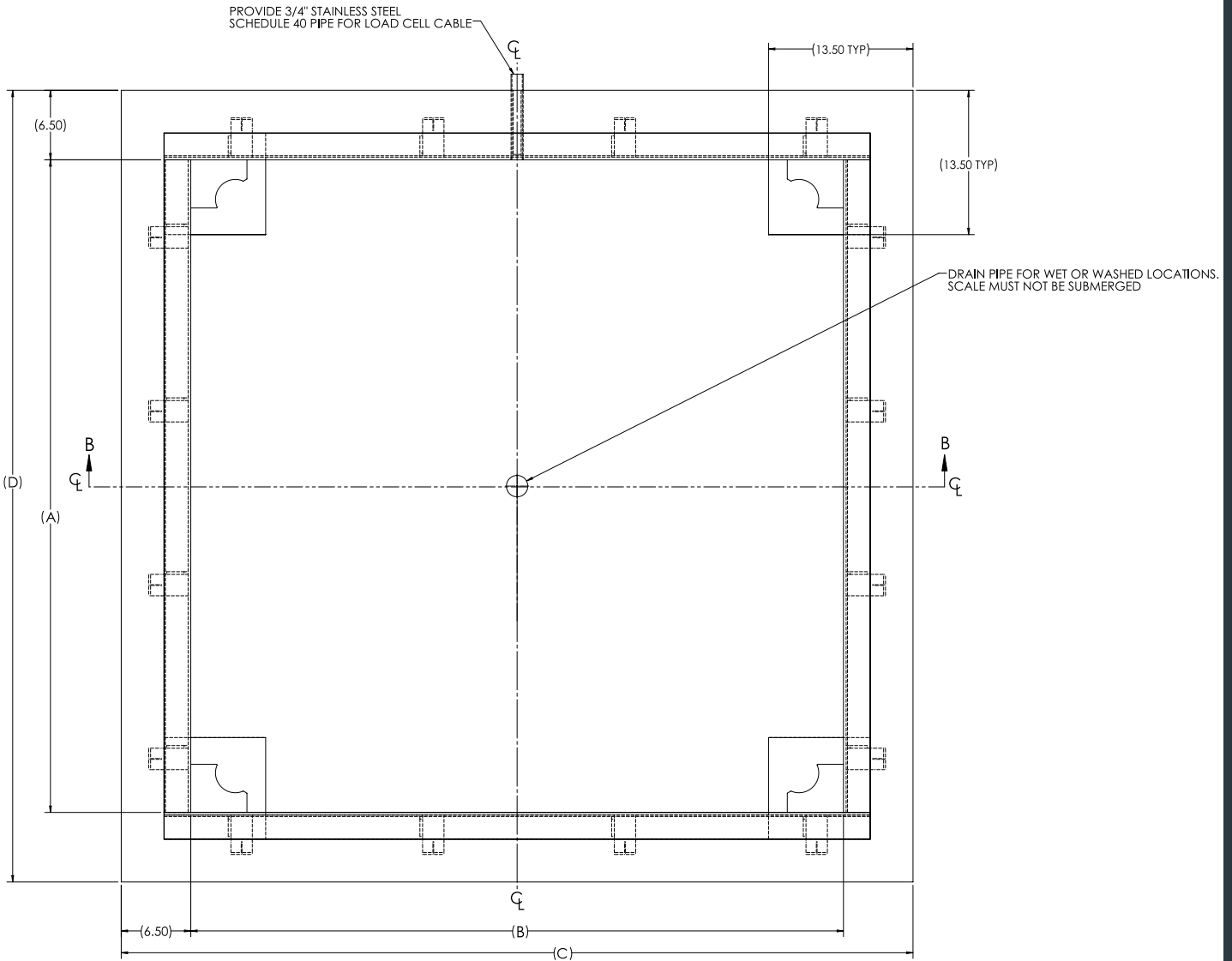


RoughDeck® QC-X

Pit Frame Concrete Details*



1. Use concrete of minimum yield strength 5,000 PSI or 6-bag mix
2. Allow 7 days to cure (wet concrete periodically during this time)
3. Before installing pit frame, ensure that proper sand (or soil) base is available under either existing concrete or new installation
4. In wet or washdown applications, we recommend the use of hermetically sealed load cells
5. For required depth of slab, or rebar requirements specific to your application, proper engineering consultation is recommended

Drawing Dimensions

Scale Size	A	B	C	D
4 ft x 4 ft	49.00	49.00	62.00	62.00
5 ft x 5 ft	61.00	61.00	74.00	74.00

All dimensions are shown in inches.

* Drawings are for standard catalog part numbered scales.