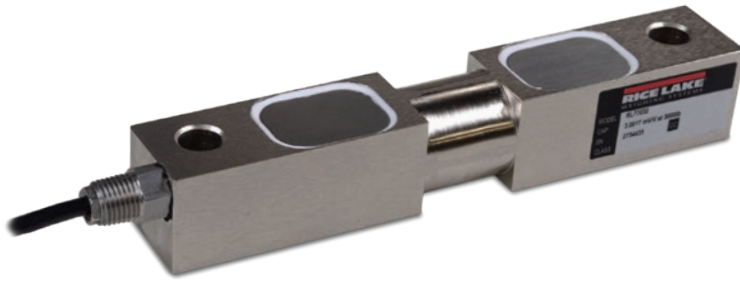


RL77032

Alloy Steel, Environmentally Sealed, IP67



Picture is a representation of actual product.

Approvals

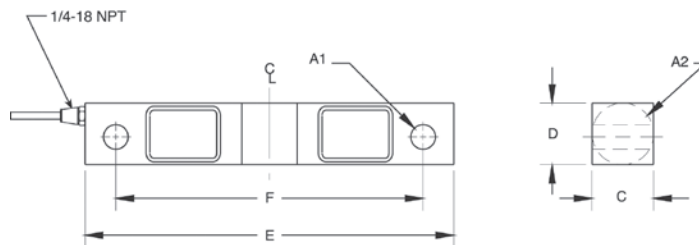


Order Information

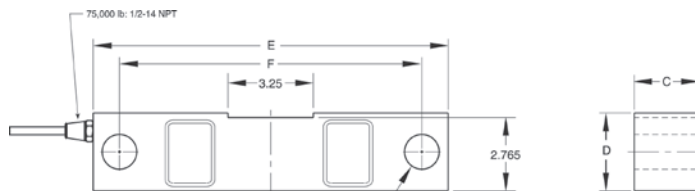
| Load Rating | Part # | Est. Weight | Price |
|-------------|--------|-------------|---------|
| 1,000 lb | 221536 | 4 lb | Consult |
| 1,500 lb | 221537 | 4 lb | Consult |
| 2,000 lb | 221538 | 4 lb | Consult |
| 2,500 lb | 221539 | 4 lb | Consult |
| 3,000 lb | 221540 | 4 lb | Consult |
| 5,000 lb | 221541 | 4 lb | Consult |
| 10,000 lb | 221542 | 7 lb | Consult |
| 15,000 lb | 221543 | 7 lb | Consult |
| 20,000 lb | 221544 | 7 lb | Consult |
| 25,000 lb | 221545 | 7 lb | Consult |
| 50,000 lb | 221546 | 25 lb | Consult |
| 75,000 lb | 221547 | 27 lb | Consult |

Dimensions

| Rated Capacity lb/in | A1 | A2 | C | D | E | F |
|-------------------------|------|------|------|------|-------|-------|
| 1,000 to 5,000 | 0.50 | 1.25 | 1.25 | 1.25 | 7.50 | 6.25 |
| 10,000 to 25,000 | 0.81 | 1.99 | 1.44 | 1.94 | 8.75 | 7.50 |
| 50,000 | 1.31 | 3.00 | 2.44 | 2.94 | 13.50 | 11.50 |
| 75,000 | 1.31 | - | 2.44 | 2.94 | 13.50 | 11.50 |



1,000 to 50,000lb



75,000lb

Interchangeable Products

- RICE LAKE WEIGHING SYSTEMS
RL75016page 131
- VPG® SENSORTRONICS®
65016.....page 290

Weigh Module Available

- RICE LAKE WEIGHING SYSTEMS
RL1600 Series.....page 67

Specifications

- Full Scale Output:**
3.0 mV/V
- Output Resistance:**
700 (± 5) ohm
- Input Resistance:**
770 (± 10) ohm
- Material/Finish:**
High-alloy steel, nickel plated
- Temperature:**
Operating:
0 °F to 150 °F (-18 °C to 65 °C)
- Seal Type:**
Environmentally sealed, IP67
- Safe Overload:**
150% full scale
- Safe Sideload:**
100% full scale
- Rated Excitation:**
5 to 10 VDC
- Nonlinearity:**
0.03% full scale
- Hysteresis:**
0.02% full scale
- Deflection at Capacity:**
1,000 to 2,500 lb: 0.01 in
5,000 lb: 0.015 in
10,000 to 20,000 lb: 0.022 in
25,000 lb: 0.036 in
50,000 lb: 0.052 in
75,000 lb: 0.07 in
- Insulation Resistance:**
5,000 megohm
- Cable Length:**
25 ft
Polyurethane jacket
- Cable Color Code:**
Red +Excitation
Black -Excitation
Green +Signal
White -Signal
- Warranty:**
Two-year limited
- Approvals:**
cFMus