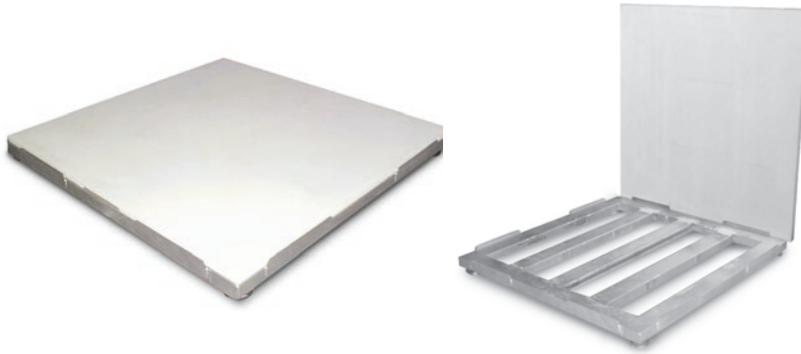


RoughDeck® SD

Sanitary Deck Floor Scale



Approvals



Important NOTE: Applications where oily substances may be spilled could cause the deck to become slippery—caution should be used.

Part Number/Price

Part #	Size (W × L × H)	Capacity	Est. Weight	Price
50385	2.5 ft × 2.5 ft × 4.4 in	2,000 lb	158 lb	Consult
50386	3 ft × 3 ft × 4.4 in	2,000 lb	208 lb	Consult
50387	4 ft × 4 ft × 4.4 in	2,000 lb	338 lb	Consult
50388	4 ft × 4 ft × 4.4 in	5,000 lb	338 lb	Consult
50389	4 ft × 4 ft × 5.4 in	10,000 lb	447 lb	Consult
50390	4 ft × 5 ft × 4.4 in	2,000 lb	406 lb	Consult
50391	4 ft × 5 ft × 5.4 in	5,000 lb	406 lb	Consult
50392	4 ft × 5 ft × 5.4 in	10,000 lb	540 lb	Consult
50393	4 ft × 6 ft × 5.4 in	2,000 lb	477 lb	Consult
50394	4 ft × 6 ft × 5.4 in	5,000 lb	477 lb	Consult
50395	4 ft × 6 ft × 6.4 in	10,000 lb	637 lb	Consult
50396*	5 ft × 5 ft × 5.4 in	2,000 lb	478 lb	Consult
50397*	5 ft × 5 ft × 5.4 in	5,000 lb	478 lb	Consult
50398*	5 ft × 5 ft × 5.4 in	10,000 lb	637 lb	Consult
50399*	5 ft × 7 ft × 6.4 in	2,000 lb	705 lb	Consult
50400*	5 ft × 7 ft × 6.4 in	5,000 lb	705 lb	Consult
50401*	5 ft × 7 ft × 6.4 in	10,000 lb	908 lb	Consult

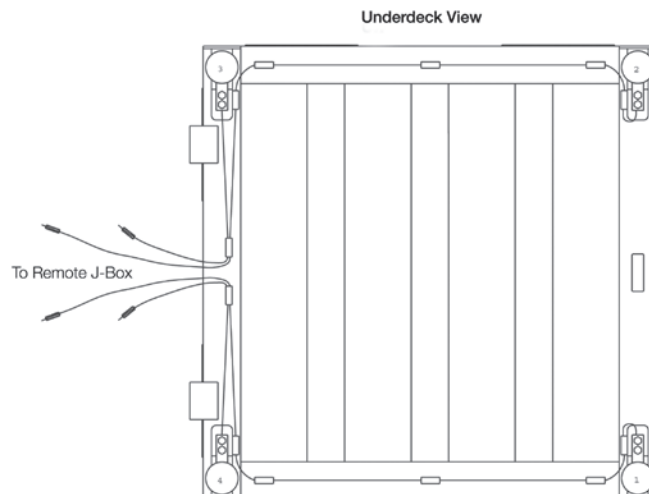
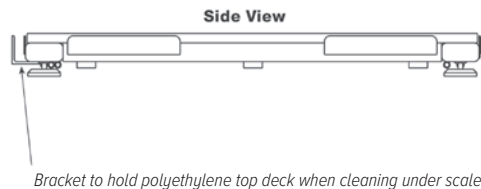
* Constructed of two pieces of polyethylene to make up the top deck.

Options/Accessories

Part #	Description	Price
28740	Floor stand for indicator, 36.3 in high, stainless steel	Consult
18778	Floor anchor plates, stainless steel (set of 2)	Consult

Consult factory for these additional options:

- Access ramps
- Pit frames



Standard Features

- Rugged washdown design
- 304 stainless steel construction
- Rigid stainless steel tube frame
- Four stainless steel, hermetically sealed, IP69K shear beam load cells
- Load cells protected on all four sides
- 20 ft (6 m) of SURVIVOR® EL147HE hostile environment load cell cable
- Remote junction box can be located up to 10 ft away from scale
- Four adjustable stainless steel SUREFOOT™ support feet
- Removable polyethylene deck (deck weight: 80 lb (36.6 kg) on 4 × 4 ft size)
- Side brackets to hold deck during washdown

Specifications

End Load Capacity:

100% full scale at 2,000 lb and 5,000 lb
80% full scale at 10,000 lb

Cable Length:

20 ft (6.1 m) for connecting junction box to indicator

Scale Weldment:

AISI304L, glass bead blasted for even appearance

Junction Box:

TuffSeal® JB4SS stainless steel, NEMA Type 4X junction box with signal trim card

Welding:

Continuous

Warranty (limited):

Weldment: Five years
Load cells: Two years
All other components: One year

Approvals:

NTEP 92-001, Class III 5,000 d