

# Belt Scales

TABLE OF CONTENTS

**Belt Scales..... 143**

**Master™ 311 Belt Scale Weigh Frame ..... 145**  
*Medium to Heavy Capacity Weigh Frame*

**Master™ 221DB Belt Scale Weigh Frame . 146**  
*Medium to Heavy Capacity Belt Scale*

**Master™ 211 Belt Scale Weigh Frame ..... 147**  
*Medium to Heavy Capacity Weigh Frame*

**Master™ 14X Belt Scale Weigh Frame..... 148**  
*Medium to Heavy Capacity Weigh Frame*

**Master™ 421 Belt Scale Weigh Frame ..... 149**  
*Light Capacity Weigh Frame*

**BCi Belt Scale Weigh Frame ..... 150**  
*In-motion Belt Scale System*

**882D Integrator ..... 152**  
*Belt/Bulk Material Instrumentation*

**1280 with SCT-4XD Integrator..... 154**  
*Belt/Bulk Material Instrumentation*

**SCT-4XD Integrator ..... 156**  
*Belt/Bulk Material Instrumentation*

**Speed Sensor ..... 158**

**Belt Scale Application ..... 159**

Product names, logos, brands and other trademarks featured or referred to within this publication are the property of their respective trademark holders.



# Master™ 311 Belt Scale Weigh Frame

Medium to Heavy Capacity Weigh Frame



## Part Number/Price

Part #	Description	Est. Weight	Price
215021	Master 311 belt scale weigh frame, 18 in belt with 75 kg load cell	125 lb	\$1,300.00
215022	Master 311 belt scale weigh frame, 24 in belt with 75 kg load cell	125 lb	\$1,300.00
215023	Master 311 belt scale weigh frame, 24 in belt with 150 kg load cell	125 lb	\$1,300.00
215025	Master 311 belt scale weigh frame, 30 in belt with 150 kg load cell	125 lb	\$1,400.00
215030	Master 311 belt scale weigh frame, 30 in belt with 250 kg load cell	125 lb	\$1,400.00
215031	Master 311 belt scale weigh frame, 36 in belt with 250 kg load cell	125 lb	\$1,500.00
Consult	Lifting weight kit		Consult

Please complete the Belt Scale Questionnaire on page 159 to obtain a quote

## Standard Features

- Semi-modular weigh frame design
- Weigh frame without moving parts
- Fits standard conveyors
- Mounts with four bolts
- Requires weigh frame cutting for proper fit
- Minimal modifications to conveyor required

## Options

- Galvanized or stainless construction
- Custom widths available
- Custom lifting weights available on request

## Applications

- Mining, quarries, bulk material blending, process control and retrofit

## Specifications

### Belt Width:

18 to 36 in (457 to 914 mm)

### Capacity:

1,500 tons per hour

### Belt Speed:

Maximum 400 ft/minute (2 m/s)

### Inclination:

Maximum 12 degrees

### Material:

Powder coated mild steel

### Accuracy System:

1%

### Load Cell:

RL1218A: 50 kg, 100 kg, 250 kg

### Warranty:

One-year limited

# Master™ 221DB Belt Scale Weigh Frame

Medium to Heavy Capacity Belt Scale



## Part Number/Price

Part #	Description	Est. Weight	Price
163292	221DB belt scale with 50 kg load cells	143 lb	\$3,500.00
163293	221DB belt scale with 100 kg load cells	143 lb	\$3,500.00
163294	221DB belt scale with 200 kg load cells	143 lb	\$3,500.00
202591	221DB stainless steel belt scale with 50 kg load cells	143 lb	\$5,200.00
202592	221DB stainless steel belt scale with 100 kg load cells	143 lb	\$5,200.00
202593	221DB stainless steel belt scale with 200 kg load cells	143 lb	\$5,200.00

Please complete the Belt Scale Questionnaire on page 159 to obtain a quote

## Standard Features

- Weigh frame is mounted on the outside of conveyor
- Minimal modifications to conveyor are required
- Service friendly
- Friction-free pivot supports
- Two support beams
- Fits standard conveyors
- Mounts with four bolts

## Options

- Galvanized or stainless construction

## Applications

- Medium to heavy capacity

## Specifications

### Conveyor Width:

18 to 72 in  
(457 to 1,829 mm)

### Capacity:

3,300 tons per hour

### Maximum Belt Speed:

600 ft/minute (3 m/s)

### Inclination:

Maximum 25 degrees

### Material:

Powder coated mild steel

### Accuracy System:

0.5% to 1%

### Load Cell:

RL9018SS: 50 kg, 100 kg, 200 kg

### Junction Box:

JB4SS

### Warranty:

One-year limited

# Master™ 211 Belt Scale Weigh Frame

Medium to Heavy Capacity Weigh Frame



## Standard Features

- Friction-free pivot points
- One load cell carrier beam
- Fits standard conveyors
- Custom built for each application

## Options

- 304/316 Stainless steel
- Dual load cells
- Dual idler
- Custom lifting weights available on request

## Applications

- Medium to heavy capacity, mining and agriculture

## Specifications

**Conveyor Width:**  
20 to 80 in (500 to 2,000 mm)

**Capacity:**  
3,000 tons per hour

**Maximum Belt Speed:**  
600 ft/minute (3 m/s)

**Maximum Inclination:**  
25 degrees

**Material:**  
Powder coated mild steel

**Accuracy System:**  
0.5 %

**Load Cell:**  
RL20001 alloy steel, S-beam  
(capacity selected from application)

**Warranty:**  
One-year limited

## Part Number/Price

Part #	Description	Price
Consult	211 weigh frame	Consult
Consult	Lifting weight kit	Consult

Please complete the Belt Scale Questionnaire on page 159 to obtain a quote

# Master™ 14X Belt Scale Weigh Frame

Medium to Heavy Capacity Weigh Frame



## Part Number/Price

Part #	Description	Price
Consult	Master 142	Consult
Consult	Master 143	Consult
Consult	Master 144	Consult
Consult	Lifting weight kit	Consult

Please complete the Belt Scale Questionnaire on page 159 to obtain a quote

## Standard Features

- Custom built for each application
- Fits standard conveyors
- Multiple idler design
- Inner frame has free-floating platform

## Options

- 304 stainless steel
- Two, three or four weigh idlers
- Customer lifting weights available upon request

## Applications

- Medium to heavy capacity, mining and aggregate

## Specifications

**Conveyor Width:**  
20 to 120 in (500 to 3,000 mm)

**Capacity:**  
20,000 tons per hour

**Belt Speed:**  
1,400 ft/minute (7 m/s)

**Inclination:**  
25 degrees

**Material:**  
Powder coated mild steel

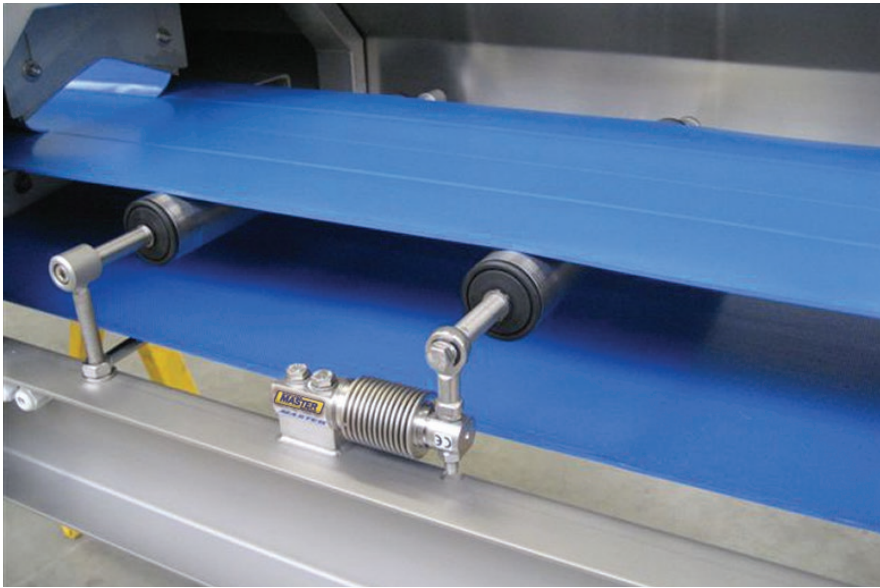
**Accuracy Guidelines:**  
0.25%

**Load Cell:**  
RL20001 alloy steel S-beam  
(capacity selected from application)

**Warranty:**  
One-year limited

# Master™ 421 Belt Scale Weigh Frame

Light Capacity Weigh Frame



## Standard Features

- Ideal for flat belt conveyors
- Roller supported on both sides by load cells
- Open design for easy cleaning

## Applications

- Light capacity, food production and light granular materials

## Specifications

### Conveyor Width:

12 to 60 in (300 to 1,600 mm)

### Capacity:

30 tons per hour

### Belt Speed:

400 ft/minute (2 m/s)

### Inclination:

10 degrees

### Material:

Powder coated mild steel, 304/316 stainless steel

### Accuracy Systems:

1.0%

### Load Cell:

RL9018SS single-ended beam in 10 kg, 20 kg or 50 kg capacities

### Warranty:

One-year limited

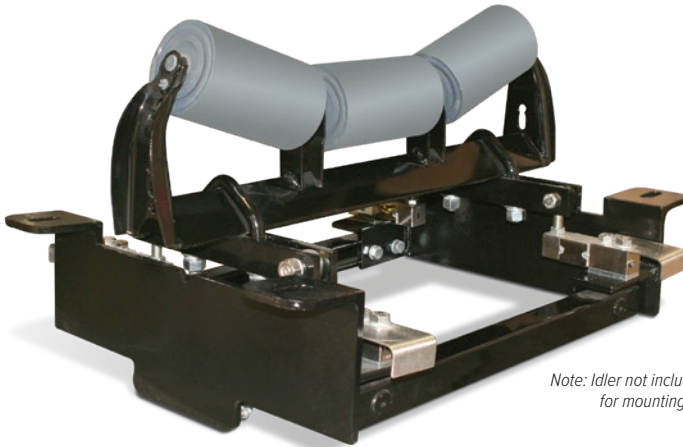
## Part Number/Price

Part #	Description	Price
Consult	421 weigh frame	Consult

Please complete the Belt Scale Questionnaire on page 159 to obtain a quote

# BCi Belt Scale Weigh Frame

In-motion Belt Scale System



Note: Idler not included. Customer is responsible for mounting idler to weigh frame.

## Standard Features

- Fits standard conveyors using CEMA-C idlers
- No moving parts
- Four shear laterally opposed shear beam load cells
- Fabricated with heavy gauge steel
- Minimal conveyor modifications required for installation

## Applications

- Mining, quarries, bulk material blending, process control, utilities, truck/barge/rail loading and retrofit

## Specifications

### Conveyor Widths:

18 to 72 in

### Capacity:

Up to 10,000 tons per hour

### Belt Speed:

Up to 600 feet per minute

### Accuracy Guidelines:

Guidelines assume clean belt with automatic tensioning system. Accuracy guidelines are typical. System accuracy may vary depending on environmental influences.

### System Accuracy:

Single to two idler system: 0.5% to 1% total error

## Part Number/Price

Part #	Description	Est. Belt Width	Capacity	Price
<b>Mild Steel Weigh Frames</b>				
94968	24 in weigh frame	18 in	500 lb	\$2,800.00
95208	30 in weigh frame	24 in	500 lb	\$2,800.00
95209	36 in weigh frame	30 in	500 lb	\$2,800.00
95210	42 in weigh frame	36 in	500 lb	\$2,800.00
95211	48 in weigh frame	42 in	500 lb	\$2,800.00
95212	54 in weigh frame	48 in	500 lb	\$2,800.00
96717	60 in weigh frame	54 in	1,000 lb	\$2,800.00
96718	66 in weigh frame	60 in	1,000 lb	\$2,800.00
96719	72 in weigh frame	66 in	1,000 lb	\$2,800.00
Consult	Light-capacity weigh frames			\$3,185.00
<b>Stainless Steel Weigh Frames</b>				
110839	24 in weigh frame	18 in	500 lb	\$5,300.00
105246	30 in weigh frame	24 in	500 lb	\$5,300.00
110841	36 in weigh frame	30 in	500 lb	\$5,300.00
110842	42 in weigh frame	36 in	500 lb	\$5,300.00
110843	48 in weigh frame	42 in	500 lb	\$5,300.00
110844	54 in weigh frame	48 in	500 lb	\$5,300.00
110845	60 in weigh frame	54 in	500 lb	\$5,300.00
110846	66 in weigh frame	60 in	500 lb	\$5,300.00
110847	72 in weigh frame	66 in	500 lb	\$5,300.00
Consult	Light-capacity weigh frames			\$4,595.00
<b>Weigh Frame Accessories</b>				
126282	V-bolt for 3 in angle iron base idlers set of 2			\$95.00
126283	V-bolt for 4 in angle iron base idlers set of 2			\$105.00

Please complete the Belt Scale Questionnaire on page 159 to obtain a quote

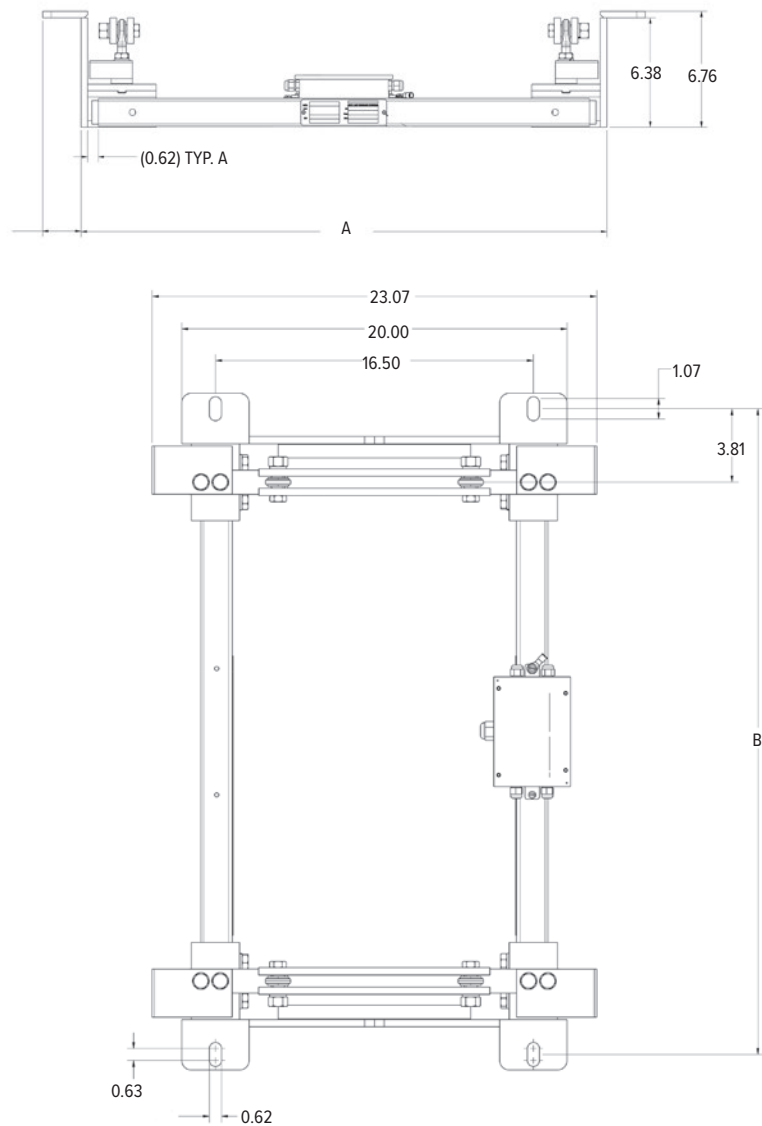
# BCi Belt Scale Weigh Frame

In-motion Belt Scale System

## Dimensions

Part Number	A	B
<b>Mild Steel</b>		
<b>94968</b>	24.00 in	27.50 in
<b>95208</b>	30.00 in	33.50 in
<b>95209</b>	36.00 in	39.50 in
<b>95210</b>	42.00 in	45.50 in
<b>95211</b>	48.00 in	51.50 in
<b>95212</b>	54.00 in	57.50 in
<b>96717</b>	60.00 in	63.50 in
<b>96718</b>	66.00 in	69.50 in
<b>96719</b>	72.00 in	75.50 in

Part Number	A	B
<b>Stainless Steel</b>		
<b>110839</b>	24.00 in	27.50 in
<b>105246</b>	30.00 in	33.50 in
<b>110841</b>	36.00 in	39.50 in
<b>110842</b>	42.00 in	45.50 in
<b>110843</b>	48.00 in	51.50 in
<b>110844</b>	54.00 in	57.50 in
<b>110845</b>	60.00 in	63.50 in
<b>110846</b>	66.00 in	69.50 in
<b>110847</b>	72.00 in	75.50 in



Note: Cables on drawings removed for clarity. Idler mounting hardware is not included in weigh frame; see idler mounting bolts above.

# 882D Integrator

Belt/Bulk Material Instrumentation



## Approvals



## Standard Features

- LCD display
- Hardware slot for two option cards
- Operator access to audit trail, preset tare, accumulator, time and date and setpoints through menu keys
- Password-protected audit trail tracking for configuration and calibration changes
- Setpoints for control and alarms
- Four onboard digital I/O channels
- Filter settings for noise
- Speed inputs

## Part Number/Price

Part #	Description	Price
<b>Integrators</b>		
177708	120 VAC	\$2,115.00
180847	220 VAC Euro power cord	\$2,115.00
184683	9 to 36 VDC	\$2,275.00

## Options/Accessories

Part #	Description	Price
190527	Digital I/O	\$365.00
190528	Single analog	\$425.00
190529	Relay interface, not for totalizer pulse count output	\$470.00
177850	Panel mount option 880	\$255.00
197724	Overlay, clear protective	\$85.00
<b>Network Cards</b>		
190530	EtherNet/IP™	\$620.00
190531	DeviceNet®	\$620.00
190532	PROFINET	\$620.00
190534	PROFIBUS®	\$620.00
190533	Modbus TCP/IP	\$620.00
190535	EtherCAT	\$620.00

Please complete the Belt Scale Questionnaire on page 159 to obtain a quote

## Specifications

### Power

Input voltages: 100 to 240 VAC; 9 to 36 VDC  
Input frequency: 50/60 Hz

### Power Consumption:

AC: 15 watts; DC: 20 watts

### Excitation Voltage:

10 VDC 8 × 350 ohm (16 × 700 ohm) load cells

### Analog Signal Input Range:

-45 mV to 45 mV

### Analog Signal Sensitivity:

0.3 µV/graduation minimum at 7.5 Hz;  
1.0 µV/graduation typical at 120 Hz

### Sample Rate:

7.5 to 120 Hz, software selectable

### Resolution:

Internal: 8,000,000 counts 23-bit  
Display: 100,000

### System Linearity:

± 0.01% full scale

### Digital I/O:

Four I/O onboard primary keys, pseudo functions, batching functions

### Communication Ports:

RS-232 full duplex or RS-485 half duplex; USB 2.0  
Micro B connector; Ethernet TCP/IP

### Pulse Input:

Dual inputs for redundancy

### Display:

LCD display, 0.8 in, seven-digit, seven-segment  
weight display, 3 × 20 pixelated prompt area

### Annunciators:

Load, total, rate, speed, zero

### Keys/Buttons:

Flat membrane panel, tactile feel

### Temperature:

Industrial: 14 °F to 122 °F (-10 °C to 50 °C)

### Dimensions:

(L x W x H)  
9.93 × 4.00 × 8.94 in

### Weight:

12 lb (5.4 kg)

### Rating/Material:

IP66  
Stainless steel

### Warranty:

Two-year limited

### EMC Immunity:

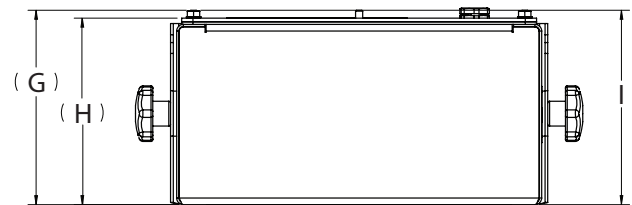
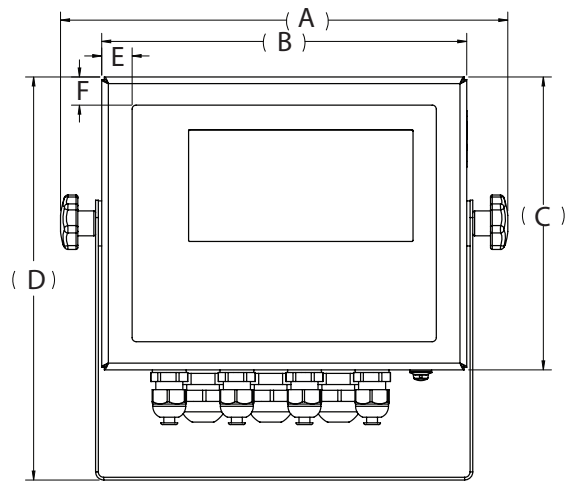
18 KV, 10 V/m

### Approvals:

cULus Listed  
CE Approved  
UKCA

## Dimensions

882D Belt Scale Integrator			
A	9.93 in (252 mm)	F	0.63 in (16 mm)
B	8.10 in (206 mm)	G	4.31 in (110 mm)
C	6.50 in (165 mm)	H	4.14 in (105 mm)
D	8.94 in (227 mm)	I	4.32 in (110 mm)
E	0.68 in (17 mm)		



# 1280 with SCT-4XD Integrator

Belt/Bulk Material Instrumentation



## Standard Features

- 1280 terminal with web server and system configuration menus
- Manage up to four load cells (one scale)
- Dual encoders and outputs for automatic test weight application
- Micro-USB communication port for configuration, diagnostics and data backup (RL Tools Software)
- All data and adjustments of each scale are available through integrated fieldbus (not available on AN models)
- Removable terminal blocks to simplify wiring in the electrical panel
- Power supply circuit with protections, specific for industrial environment

## Options

- Fieldbus: EtherNet/IP™, PROFINET IO, Modbus TCP/IP
- Analog output

## Part Number/Price

Part #	Description	Price
228768	Indicator, 1280 belt with SCT-4XDAN digitizer	\$5,595.00
229090	Indicator, 1280 belt with wall mount enclosure, AC power supply US	\$5,645.00
228928	Indicator, 1280 belt with wall mount enclosure, AC power supply EU	\$5,645.00

## Options/Accessories

Part #	Description	Price
228869	1280 terminal, 7-inch touch screen and tactile keypad, universal enclosure with tilt stand	\$3,300.00
Consult	1280 terminal, 7-inch touch screen (only) for panel/surface mount	Consult
88792	Power supply, IDEC 12 VDC DIN rail mount, 1.3 Amp, input: 85 to 264 VAC, 100 to 370 VDC 15W	\$140.00
119244	Power supply, 24VDC 1.3 A DIN mount input 90 to 264 VAC, 120 to 370 VDC, UL E135494	\$160.00

## Specifications

### Power:

AC voltages: 100 to 240 VAC; 50/60 Hz  
DC voltages: 11 to 30 VDC

### Power Consumption:

60W

### Excitation Voltage:

10 VDC (±5 VDC)  
16 × 350 ohm or 32 × 700 ohm load cells per A/D card

### Analog Signal Input Range:

-60 mV to 60 mV

### Analog Signal Sensitivity:

0.3 µV/graduation minimum at 7.5 Hz to 120 Hz  
1.0 µV/graduation recommended

### A/D Sample Rate:

7.5 to 960 Hz, software selectable

### Resolution:

Internal: 8,000,000 counts  
Display: 1,000,000

### System Linearity

± 0.01% full scale

### Digital I/O:

Eight I/O channels on CPU board  
Optional 24-channel I/O expansion boards

### Communication Ports:

Port 1 & 2: Full duplex RS-232 with CTS/RTS, RS-422/485

Baud rate: 1200 to 115200

Port 3: USB 2.0 Device (Micro)

USB host: (2) Type A connectors max 500 mA

Ethernet: Wired 10/100 Auto-MDX

Ethernet: Wireless 802.11 b/g/n 2.4GHz

### Onboard:

Selectable filters: Three stage, Adaptive or Damping  
Embedded Linux® OS  
8 GB eMMC (system use)  
1 GB DDR3 RAM  
460 MB onboard database (SQLite) storage  
Up to 32 GB micro SD card (sold separately)

### Display:

Seven-inch, 800 × 480 pixel, 500 or 1,000 NIT

### Keys/Buttons:

22-key membrane panel, tactile buttons, on-screen keyboard for text and numeric entry, USB port for flash drive, keyboard and printer

### Temperature:

Certified: 14 °F to 104 °F (-10 °C to 40 °C)  
Operating: -4 °F to 131 °F (-20 °C to 55 °C)

### Rating/Material:

Universal: IP69K

### Weight:

Universal enclosure: 11 lb (4.9 kg)

### Warranty:

Two-year limited

### EMC Immunity:

10 V/m



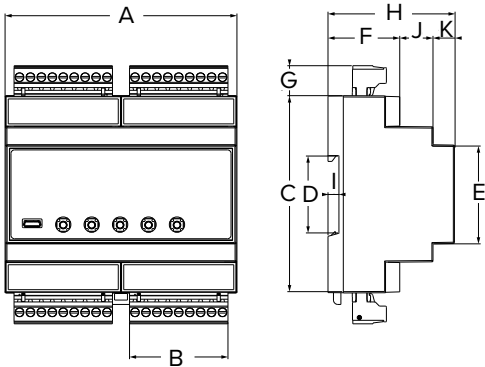
Optional enclosure

# 1280 with SCT-4XD Integrator

Belt/Bulk Material Instrumentation

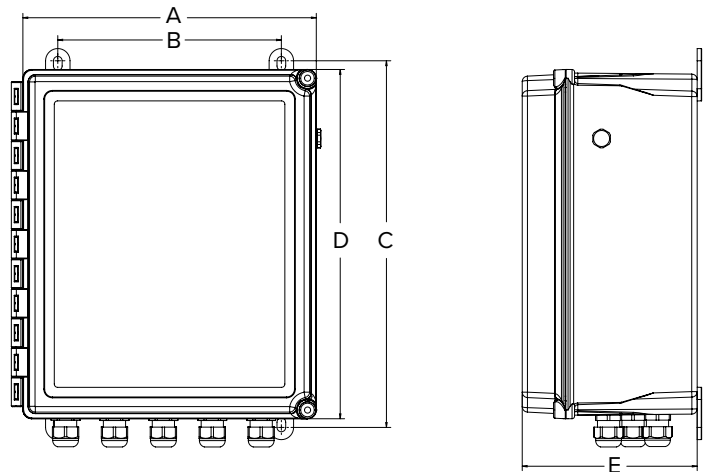
## Dimensions

SCT-4XD			
A	4.17 in (106 mm)	G	0.54 in (13.7 mm)
B	1.77 in (45 mm)	H	2.28 in (58 mm)
C	3.54 in (90 mm)	I	0.20 in (5 mm)
D	1.38 in (35 mm)	J	0.59 in (15 mm)
E	1.77 in (45 mm)	K	0.39 in (10 mm)
F	1.30 in (33 mm)		



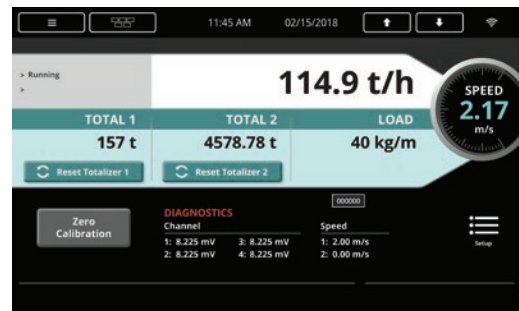
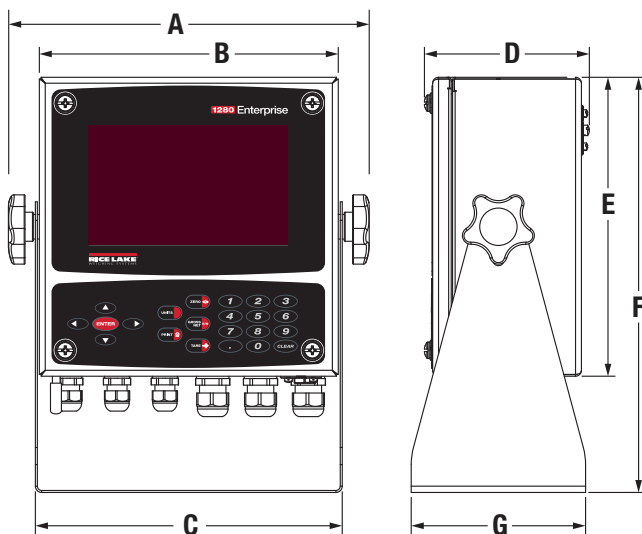
## Dimensions

SCT-4XD Enclosure			
A	10.50 in (267 mm)	C	13.12 in (333 mm)
B	8.00 in (203 mm)	D	12.50 in (318 mm)
E	6.26 in (159 mm)		



## Dimensions

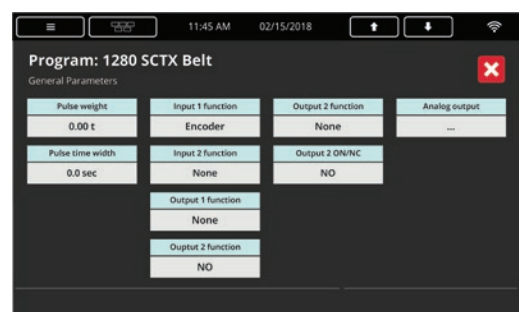
Universal 1280			
A	10.86 in (276 mm)	E	9.00 in (229 mm)
B	9.00 in (229 mm)	F	12.50 in (318 mm)
C	9.24 in (235 mm)	G	5.25 in (133 mm)
D	4.97 in (126 mm)		



Run Screen



Setup Screen



Setup Screen No Grouping

BELT SCALES

# SCT-4XD Integrator

Belt/Bulk Material Instrumentation

**NEW**



Optional enclosure



## Specifications

### Power:

12 to 24 VDC

### Power Consumption:

5 W

### Excitation Voltage:

5 VDC, 120 mA (up to 16 × 350 ohm cells)

### Analog Signal Input Range:

±39 mV

### Analog Signal Sensitivity:

0.3 µV/graduation minimum

### Sample Rate:

Single-channel up to 2,600 Hz, software selectable  
4 channels up to 100 Hz, software selectable

### Analog Output (if equipped):

Opt. isolated, 16-bit  
0 to 20 mA, 4 to 20 mA (maximum 350 ohm)  
0 to 5 VDC, 0 to 10 VDC (minimum 10,000 ohm)

### Digital I/O:

Two inputs: 12/24 VDC  
Two outputs: 150 mA 48 VAC/150 mA 60 VDC

### Communication Ports:

(1) RS-485 half duplex, (1) RS-232 full duplex  
1 USB Micro B connector (device)  
for PC configuration

### Pulse Input:

Dual inputs for redundancy

### Display:

Six-digit 0.31 in (8 mm), red LED

### Keys/Buttons:

Flat membrane panel, tactile feel

### Dimensions:

(L × W × H)  
Overall: 10.5 × 6.26 × 12.5 in  
(266 × 159 × 318 mm)

### Mounting Tabs:

8.0 × 13.12 in  
(203 × 333 mm)

### Weight:

27 lb

### Rating/Material:

NEMA 4X (if using supplied enclosure)

### Warranty:

One-year limited

### Approvals:

CE-M EN 45501

## Standard Features

- Manage up to four load cells (one scale)
- Dual encoders and outputs for automatic test weight application
- Micro-USB communication port for configuration, diagnostics and data backup (RL Tools Software)
- All data and adjustments of each scale are available through integrated fieldbus (not available on AN models)
- Removable terminal blocks to simplify wiring in the electrical panel
- Power supply circuit with protections, specific for industrial environment

## Options

- 1280 terminal with web server and system configuration menus
- Fieldbus: EtherNet/IP™, PROFINET IO, Modbus TCP/IP
- Analog output

## Part Number/Price

Part #	Description	Price
<b>Integrator Only</b>		
225171	Digitizer only, 4 channel weight transmitter with Belt Scale Integrator firmware - no power supply or enclosure	\$1,300.00
225172	Modbus TCP/IP, 4 channel weight transmitter with Belt Scale Integrator firmware	\$1,580.00
225173	PROFINET, 4 channel weight transmitter with Belt Scale Integrator firmware	\$1,580.00
225174	EtherNet/IP, 4 channel weight transmitter with Belt Scale Integrator firmware	\$1,580.00
<b>Integrator with Enclosure</b>		
226132	Analog output, 24 VDC power supply, terminal blocks	\$2,295.00
226133	Modbus TCP/IP, 24 VDC power supply, terminal blocks	\$2,575.00
226134	PROFINET, 24 VDC power supply, terminal blocks	\$2,575.00
226135	EtherNet/IP, 24 VDC power supply, terminal blocks	\$2,575.00

## Options/Accessories

Part #	Description	Price
228869	1280 terminal, 7-inch touch screen and tactile keypad, universal enclosure with tilt stand	\$3,300.00
Consult	1280 terminal, 7-inch touch screen (only) for panel/surface mount	Consult
88792	Power supply, IDEC 12 VDC DIN rail mount, 1.3 Amp, input: 85 to 264 VAC, 100 to 370 VDC 15W	\$140.00
119244	Power supply, 24VDC 1.3 A DIN mount input 90 to 264 VAC, 120 to 370 VDC, UL E135494	\$160.00

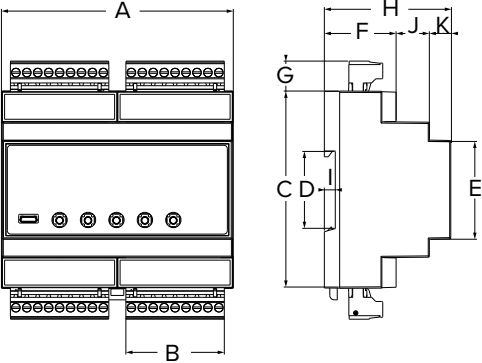


Optional HMI terminal with web server

BELT SCALES

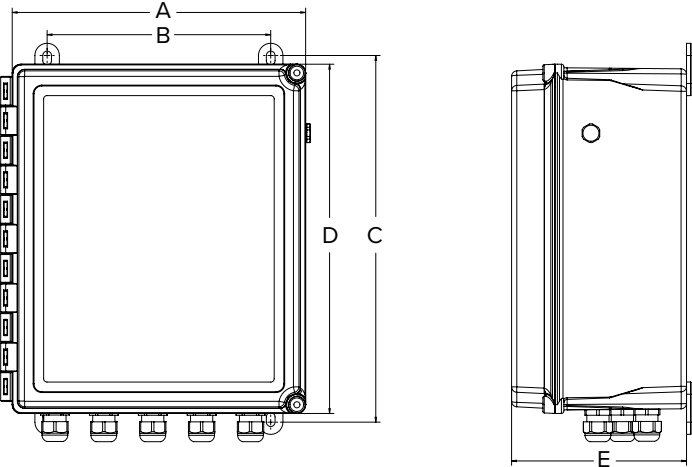
### Dimensions

SCT-4XD			
A	4.17 in(106 mm)	G	0.54 in (13.7 mm)
B	1.77 in (45 mm)	H	2.28 in (58 mm)
C	3.54 in (90 mm)	I	0.20 in (5 mm)
D	1.38 in (35 mm)	J	0.59 in (15 mm)
E	1.77 in (45 mm)	K	0.39 in (10 mm)
F	1.30 in (33 mm)		



### Dimensions

SCT-4XD Enclosure			
A	10.50 in (267 mm)	C	13.12 in (333 mm)
B	8.00 in (203 mm)	D	12.50 in (318 mm)
E	6.26 in (159 mm)		



# Speed Sensor



High-resolution Speed Sensor



Magnetic Coupler



Speed Wheel



Speed Sensors 125334 and 163319

## Standard Features

- The speed sensor monitors belt speed. It is directly coupled to a rotating shaft which drives a signal generator. The speed sensor submits an output signal at a frequency directly proportional to the shaft speed. It is typically installed on a non-driven pulley of a belt conveyor for detecting belt speed.

## Part Number/Price

Part #	Description	Price
Speed Sensing		
152626	500 PPR high-resolution encoder kit, requires 152247 if magnetic coupling is required	\$1,600.00
152247	Magnetic coupler, use with 152626	\$500.00
125334	Speed sensor, belt scale 50 PPR (generator type)	\$1,260.00
163319	Speed sensor, belt scale 600 PPR (encoder type)	\$1,450.00
94969	Speed wheel assembly, 10 PPR NPN Configuration	\$1,000.00
Static Weights		
99708	15 lb weight	\$215.00
99709	30 lb weight	\$275.00
99696	3 in static weight mounting bracket (set of two)	\$535.00
99922	4 in static weight mounting bracket (set of two)	\$600.00
Speed Sensor Replacement Parts		
94979	Sensor proximity, for 94969	\$115.00
98320	Shoulder bolt, for 94969	\$15.00
95216	Bushing, speed wheel for 94969	\$12.75
192927	Coupler, replacement for 125334 and 163319	\$175.00
Accessories		
97416	Kit, shim 50 each 1/16 in, 1/8 in and 1/4 in thick	\$95.00
21161	Junction box, splice single cell	\$85.00
98501	Cable, load cell custom, 20 ft EL146HE	\$34.50

Idler hardware not included with weigh frames

# Belt Scale Questionnaire



Customer Number:

Company:  Name:   
Date:  Phone:  Fax:  Email:

## Application Notes

☐ Inventory ☐ Load out  
☐ Control ☐ Blending

### Material

Material being measured:

Bulk Density:

(kg/lb)  (lb/cu. ft)

Corrosive state of material (choose one):

☐ High ☐ Moderate ☐ Not Corrosive

Feed Rate t/hr:

min.  
 max.

Accuracy Required: +/-

%

Constant Feed Rate:

☐ Yes ☐ No

### Conveyor

Profile:

☐ Horizontal ☐ Incline/decline  deg ☐ Variable Incline  deg ☐ Curved

Automatic Tensioning Apparatus: ☐ Yes ☐ No

Access Side (looking in direction of belt travel): ☐ Left ☐ Right ☐ Both

Area Classification:

Zone

Class

Division

Does the current conveyor have scale grade idlers: ☐ Yes ☐ No

Belt Speed (ft/m per minute):

min.  max.

Belt Condition:

What type of splice does the belt have:

Belt Length:

m/ft

Belt Cleaning Device:

☐ Yes ☐ No

Belt Width:

mm/in

Tail Pulley Diameter:

mm/in

Idler Diameter:

m/ft

Trough Angle:

deg

Idler Spacing:

mm/in

Conveyor Length:

ft/m

Supply sketch where possible.

☐ Sketch attached

## Integrator Requirements

Enclosure Type: ☐ Field Mount/Universal ☐ Panel Mount ☐ Wall Mount

Power Available: ☐ 115V ☐ 230V ☐ 9-36VDC

Communication: ☐ RS-232 (Standard) ☐ DeviceNet™ ☐ PROFIBUS® DP ☐ Ethernet/IP®  
☐ Analog Output ☐ Ethernet TCP/IP ☐ PROFINET® ☐ Modbus® TCP

Remote Display Rate: ☐ Yes ☐ No

Remote Display Totalizer: ☐ Yes ☐ No

Speed Sensor: ☐ Speed Wheel ☐ Shaft Encoder ☐ Magnet

Application Notes

