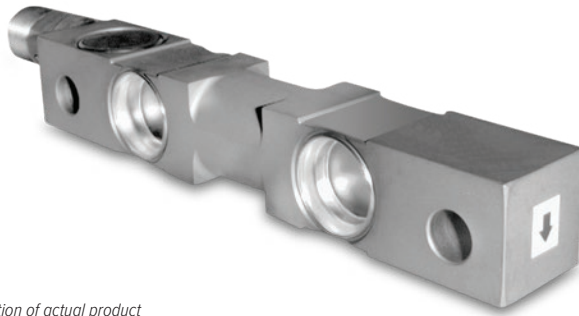


# 65016WH

Stainless Steel, Hermetically Sealed, IP68



Picture is a representation of actual product

### Approvals

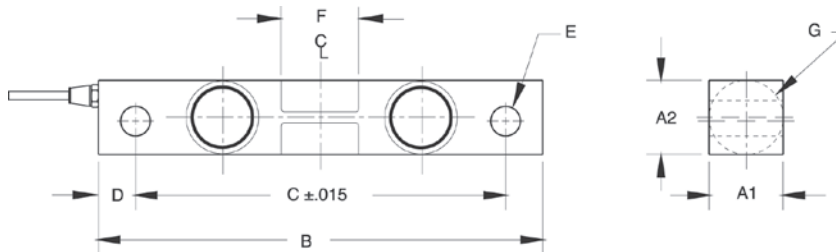


### Order Information

Load Rating	Part #	Est. Weight	Price
1,000 lb	65827	4 lb	Consult
1,500 lb	65828	4 lb	Consult
2,000 lb	65829	4 lb	Consult
2,500 lb	65830	4 lb	Consult
5,000 lb	65831	4 lb	Consult
10,000 lb	65832	7 lb	Consult
15,000 lb	65833	7 lb	Consult
20,000 lb	65834	7 lb	Consult
25,000 lb	65835	7 lb	Consult

### Dimensions

Rated Capacity	A1	A2	B	C	D	E	F	G	CONDUIT ADAPTER
lb/in									
1,000 to 5,000	1.22	1.22	7.50	6.25	0.62	0.50	1.12	1.25	1/2-14 NPT
10,000 to 25,000	1.44	1.94	8.75	7.50	0.62	0.81	1.62	1.99	1/2-14 NPT



### Interchangeable Products

- RICE LAKE WEIGHING SYSTEMS  
**RL75016WHE**..... page 148
- RICE LAKE WEIGHING SYSTEMS  
**RL75016SS\*** ..... page 146
- VPG® SENSORTRONICS®  
**65016W\*** ..... page 307

\*Welded-seal

### Weigh Module Available

- RICE LAKE WEIGHING SYSTEMS  
**RL1600 Series**....page 79 and page 81

### Specifications

- Full Scale Output:**  
3.0 mV/V nominal
- Output Resistance:**  
699 to 707 ohm
- Input Resistance:**  
686 to 714 ohm
- Material/Finish:**  
Stainless steel
- Temperature:**  
Operating range  
0 °F to 150 °F (-18 °C to 65 °C)
- Seal Type:**  
Hermetically sealed, IP68
- Safe Overload:**  
150% full scale
- Safe Sideload:**  
100% full scale
- Rated Excitation:**  
5 to 10 VDC (15 V maximum)
- Nonlinearity:**  
0.03% full scale
- Hysteresis:**  
0.02% full scale
- Insulation Resistance:**  
5,000 megohm
- Cable Length:**  
25 ft
- Cable Diameter:**  
0.200 in  
Polyurethane jacket
- Cable Color Code:**  
Red +Excitation  
Black -Excitation  
Green +Signal  
White -Signal
- Warranty:**  
One-year limited
- Approvals:**  
cFMus