

**Page 260**

**H35, STAINLESS STEEL**



The H35 offers all stainless steel construction and an integral mounting foot as well as dimensional and electrical interchangeability with several load cell manufacturers. Capacities range from 500 lb to 5,000 lb. Each cell comes with 20 ft of load cell cable.



**Page 261**

**BBS, ALLOY STEEL**



Low-cost bending beam load cell designed for precision force and weight measurement. Features excellent performance and protection against adverse environments, alloy and stainless steel sensing elements, and low mounting sensitivity. Capacities range from 50 lb to 7,500 lb. Complete with 10 ft of load cell cable.



**Page 262**

**Z6, STAINLESS STEEL**



The Z6 bending beam load cell is constructed of stainless steel with a welded seal. These features make the Z6 ideal for harsh or caustic environments as well as washdown applications. Capacities range from 5 kg to 200 kg. Complete with 10 ft of load cell cable.



ROCKER COLUMN

**Page 263**

**C16A, STAINLESS STEEL**



The HBM® C16A rocker column load cell is specifically designed for high-capacity weighing in the harshest environments. Ideal for truck scale applications, it features all stainless steel construction along with IP68 hermetic sealing. It is easy to install and maintain, providing real cost advantages for both new installations and retrofit projects. The HBM® C16A is available in capacities ranging from 20 t to 60 t, and includes 12 m of load cell cable.



SINGLE POINTS

**Page 264**

**SP4M, ALUMINUM**



The SP4M is a low-profile, off-center load cell designed for use in retail, postal and platform scale applications. This high accuracy single point is manufactured from aluminum, and is movement compensated for guaranteed accuracy. The product is protected by a quality gauge coating compound that provides a barrier against high humidity environments. Capacities range from 3 kg to 100 kg, and comes standard with 10 ft of load cell cable.



**Page 265**

**PW15, STAINLESS STEEL**



A stainless steel, single point load cell from HBM®. With capacities ranging from 15 kg to 150 kg. The PW15 is ideal for platform, hanging scale and other low capacity beam applications. Complete with 10 ft of load cell cable.



**Page 266**

**PW15AH, STAINLESS STEEL**



The PW15AH by HBM® is the new standard for hermetically sealed, single-point load cells. A unique sealing process guarantees moisture protection from high-pressure jets. Available in 10, 20, 50 and 100 kg capacities; IP69K rated.



**Page 267**

**PWS, STAINLESS STEEL**



The PWS is a single-point cell, constructed of stainless steel and designed to perform in harsh, high-shock load environments. These features make the PWS ideal for platform scales and packaging and process weighing equipment. Capacities range from 7 kg to 150 kg. Complete with 10 ft of load cell cable.





## APPROVALS



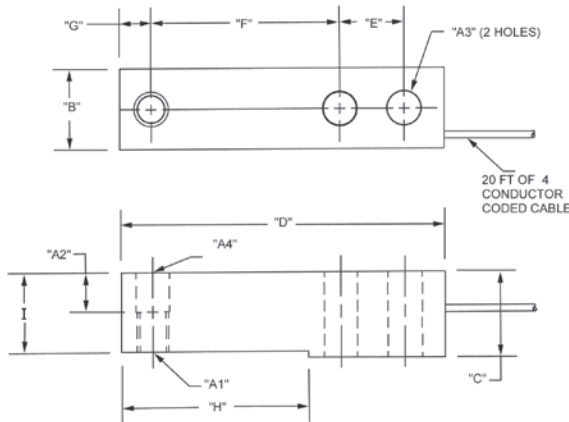
## Dimensions

Picture is a representation of actual product

Rated Capacity	A1	A2	A3	A4	B	C	D	E	F	G	H	I
500-5,000	1/2-20 UNF-2B	0.62	0.53	0.53	1.21	1.19	5.12	1.00	3.00	0.50	2.85	1.12

## Order Information

Load Rating	Part #	Est. Weight	Price
500 lb	<b>84818</b>	3 lb	\$371.00
1,000 lb	<b>64876</b>	3 lb	\$371.00
2,500 lb	<b>64877</b>	3 lb	\$371.00
4,000 lb	<b>64878</b>	3 lb	\$371.00
5,000 lb	<b>64879</b>	3 lb	\$371.00



## Interchangeable Products

RICE LAKE WEIGHING SYSTEMS

**RLH35** ..... page 144

METTLER TOLEDO®

**500 lb-8 ft cable**..... TB601019-008

**1,000 lb-20 ft cable** ..... TB601016-020

**2,500 lb-8 ft cable**..... TB601016-008

**4,000 lb-20 ft cable**.....TB601017-020

**5,000 lb-8 ft cable** ..... TB601018-008

METTLER TOLEDO

**500 lb**..... TB600830-020

METTLER TOLEDO

**1,000 lb**.....TB600831-020

METTLER TOLEDO

**2,000 lb** ..... TB600832-020

METTLER TOLEDO

**2,500 lb**..... TB600833-020

## Specifications

### Full Scale Output:

3.0 mV/V

### Output Resistance:

350 (± 3) ohms

### Input Resistance:

385 ohms, nominal

### Material/Finish:

Stainless steel

### Temperature:

Compensated range

14°F to 104°F (-10°C to 40°C)

Operating range

0°F to 150°F (-18°C to 65°C)

### Seal Type:

Welded-seal, IP67

### Safe Overload:

150% full scale

### Safe Sideload:

100% full scale

### Rated Excitation:

5- 10 V DC (15 V maximum)

### Combined Error:

0.02% full scale

### Insulation Resistance:

5,000 megohms

### Cable Length:

20 ft

### Cable Diameter:

0.190 in polyurethane jacket

### Cable Color Code:

Green +Excitation

Black -Excitation

White +Signal

Red -Signal

Yellow Shield

### Warranty:

One-year limited warranty

### Approvals:

FM

NTEP

## Interchangeable Products

RICE LAKE WEIGHING SYSTEMS

**RL40BBS** ..... page 156

VPG® SENSORTRONICS

**60007** ..... —

VPG® BLH

**LBG1** ..... —

FAIRBANKS®

**3-481XX-1, 3-486XX-1** ..... —

## Specifications

### Full Scale Output:

2.0 mV/V

### Output Resistance:

750 (± 15) ohms

### Input Resistance:

375 (± 10) ohms

### Material/Finish:

High-alloy steel, nickel plated

### Temperature:

Operating range  
0°F to 150°F (-18°C to 65°C)

### Seal Type:

Environmentally sealed, IP65

### Safe Overload:

150% full scale

### Safe Sideload:

50% full scale

### Rated Excitation:

5-10 V DC (15 V maximum)

### Nonlinearity:

0.03% full scale

### Hysteresis:

0.03% full scale

### Insulation Resistance:

1,000 megohms

### Deflection at Capacity:

50 lb=0.015 in  
100 lb=0.025 in  
200-250 lb=0.030 in  
500 lb=0.020 in  
1,000 lb=0.040 in

### Cable Length:

10 ft

### Cable Diameter:

0.190 in polyurethane jacket

### Cable Color Code:

Green +Excitation  
Black -Excitation  
White +Signal  
Red -Signal  
Yellow Shield

### Warranty:

One-year limited warranty

### Approvals:

FM



## APPROVALS



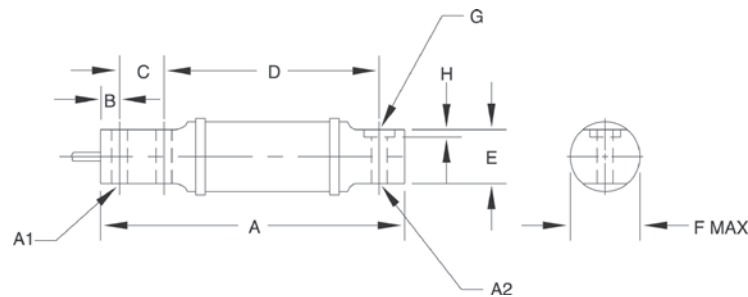
## Dimensions

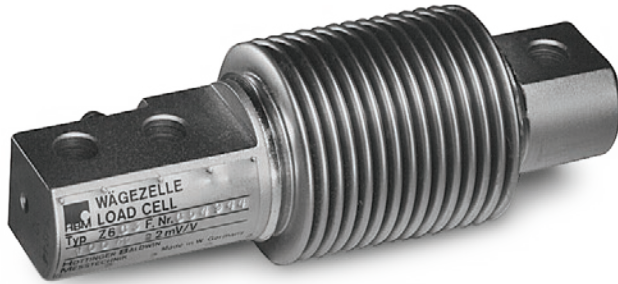
Picture is a representation of actual product

Rated Capacity	A	A1	A2	B	C	D	E	F	G	H
lb/in										
50-100	6.00	0.31	0.31	0.38	0.88	4.25	1.06	1.25	—	—
200-1,000	6.63	0.51	0.51	0.50	1.12	4.25	1.06	1.25	—	—

## Order Information

Load Rating	Part #	Est. Weight	Price
50 lb	<b>17352</b>	3 lb	\$927.50
100 lb	<b>17353</b>	3 lb	\$927.50
200 lb	<b>17354</b>	3 lb	\$927.50
250 lb	<b>17355</b>	3 lb	\$927.50
500 lb	<b>17356</b>	3 lb	\$927.50
1,000 lb	<b>17357</b>	3 lb	\$927.50





### APPROVALS



Available upon request

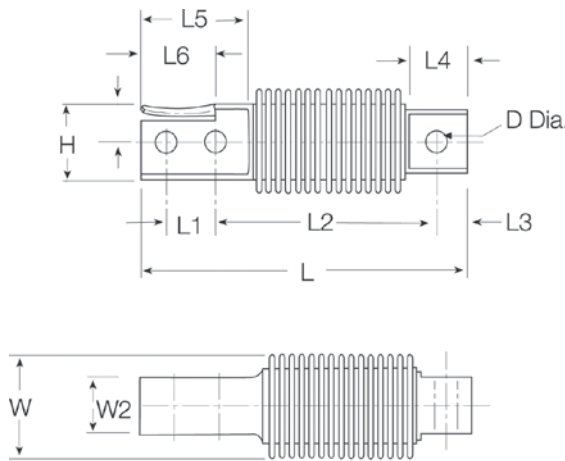
### Dimensions

Picture is a representation of actual product

Rated Capacity	H	L	L1	L2	L3	L4	L5	L6	W	W2	D
kg/mm											
5-200	31.0	123.0	18.0	82.0	9.9	21.0	45.0	27.9	42.0	20.1	8.2

### Order Information

Load Rating	Part #	Est. Weight	Price
<b>OIML C3</b>			
10 kg	36173	2 lb	\$689.00
20 kg	36174	2 lb	\$689.00
50 kg	36175	2 lb	\$689.00
100 kg	36176	2 lb	\$689.00
200 kg	36177	2 lb	\$689.00
<b>OIML D1</b>			
5 kg	36172	2 lb	\$689.00



### Interchangeable Products

RICE LAKE WEIGHING SYSTEMS	
<b>RLHBB**</b>	..... —
RICE LAKE WEIGHING SYSTEMS	
<b>RL9018SS</b>	..... page 141
VPG® REVERE	
<b>SHB</b>	..... page 289
VPG® TEDEA-HUNTLEIGH	
<b>355</b>	..... page 345
METTLER TOLEDO®	
<b>MTB***</b>	..... —

\*\* Except for 500 kg

\*\* Color code is different

### Specifications

**Full Scale Output:**

2.0 mV/V

**Output Resistance:**

356 (± 0.12) ohms

**Input Resistance:**

350-400 ohms

**Material/Finish:**

Stainless steel

**Temperature:**

Operating range  
0° F to 150° F (-18° C to 65° C)

**Seal Type:**

Welded-seal, IP68

**Safe Overload:**

150% full scale

**Rated Excitation:**

5- 10 V DC (15 V maximum)

**Combined Error:**

0.05% full scale

**Insulation Resistance:**

5,000 megohms

**Cable Length:**

10 ft

**Cable Diameter:**

0.190 in PVC jacket

**Cable Color Code:**

Blue +Excitation  
Black -Excitation  
White +Signal  
Red -Signal  
Green +Sense  
Grey -Sense

**Warranty:**

One-year limited warranty

**Approvals:**

FM  
OIML  
Ex (available upon request)

Stainless Steel, Hermetically Sealed, NTEP Certified 1:10,000 Class IIII Multiple Cell/OIML, IP68

## Specifications

**Full Scale Output:**  
2 mV/V ± 1%

**Output Resistance:**  
706 (± 3.5) ohms

**Input Resistance:**  
700 (± 20) ohms

**Material/Finish:**  
Stainless steel

**Temperature:**  
Compensated range  
14°F to 104°F (-10°C to 40°C)  
Operating range  
0° F to 150° F (-18° C to 65° C)

**Seal Type:**  
Hermetically sealed, IP68

**Safe Overload:**  
130% full scale

**Rated Excitation:**  
5- 10 VDC (15 V maximum)

**Combined Error:**  
0.03% full scale

**Insulation Resistance:**  
5,000 megohms

**Cable Length:**  
12 m

**Cable Diameter:**  
0.190 in polyurethane jacket

**Cable Color Code:**  
Blue +Excitation  
Black -Excitation  
White +Signal  
Red -Signal  
Green +Sense  
Grey -Sense

**Warranty:**  
One-year limited warranty

**Approvals:**  
NTEP  
OIML

## APPROVALS



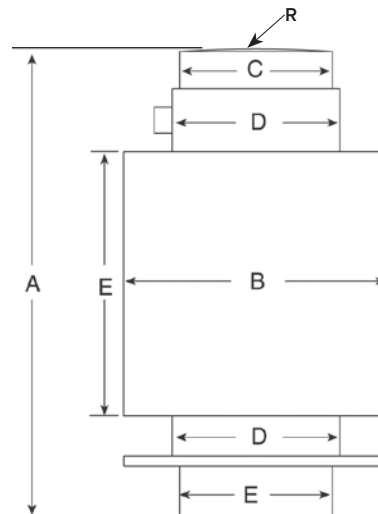
## Dimensions

Picture is a representation of actual product

Rated Capacity	A	B	C	D	E	R
t/mm						
20	150.0	76.1	44.0	48.0	44.0	130.0
30	150.0	76.1	44.0	48.0	44.0	160.0
40	150.0	76.1	44.0	48.0	44.0	180.0
60	210.0	76.1	44.0	48.0	44.0	220.0

## Order Information

Load Rating	Part #	Est. Weight	Price
<b>OIML C3</b>			
20t	<b>69312</b>	6 lb	\$1,060.00
30t	<b>69313</b>	6 lb	\$1,060.00
40t	<b>69314</b>	10 lb	\$1,060.00
60t	<b>125266</b>	10 lb	\$1,113.00
<b>NTEP Certified</b>			
20t	<b>106149</b>	6 lb	\$1,060.00
30t	<b>106150</b>	6 lb	\$1,060.00
40t	<b>106151</b>	10 lb	\$1,060.00
60t	<b>125265</b>	10 lb	\$1,113.00





### APPROVALS



### Interchangeable Products

- RICE LAKE WEIGHING SYSTEMS  
**RLSP4\***..... page 193
- RICE LAKE WEIGHING SYSTEMS  
**RL1042**..... page 196
- VPG® TEDEA-HUNTLEIGH  
**1042**..... page 349

\*Color code is different

### Specifications

- Full Scale Output:**  
2.0 mV/V
- Output Resistance:**  
350 (± 3) ohms
- Input Resistance:**  
350 ohms
- Material/Finish:**  
Anodized Aluminum
- Temperature:**  
Compensated range  
14°F to 104°F (-10°C to 40°C)  
Operating range  
0° F to 150° F (-18° C to 65° C)

**Seal Type:**  
Environmentally sealed, IP67

**Safe Overload:**  
150% full scale

**Rated Excitation:**  
5- 10 VDC (15 V maximum)

**Combined Error:**  
0.02% full scale

**Insulation Resistance:**  
5,000 megohms

**Deflection at Capacity:**  
0.015 in

**Cable Length:**  
10 ft

**Cable Diameter:**  
0.190 in PVC jacket

**Cable Color Code:**  
Blue +Excitation  
Black -Excitation  
White +Signal  
Red -Signal  
Green +Sense  
Grey -Sense

**Warranty:**  
One-year limited warranty

**Approvals:**  
FM  
NTEP  
OIML

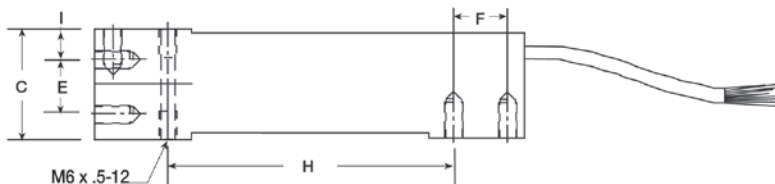
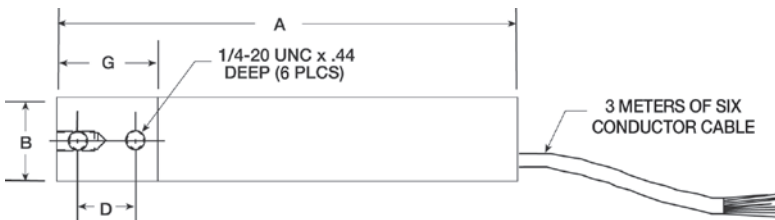
### Dimensions

Picture is a representation of actual product

Rated Capacity	A	B	C	D	E	F	G	H	I
kg/mm									
3-100	150.3	25.4	39.9	19.1	19.1	19.1	33.8	99.6	11.4

### Order Information

Load Rating	Part #	Est. Weight	Price
<b>NTEP Certified</b>			
7 kg	72764	2 lb	\$238.50
15 kg	72767	2 lb	\$238.50
20 kg	72769	2 lb	\$238.50
30 kg	72771	2 lb	\$238.50
50 kg	72776	2 lb	\$238.50
75 kg	72777	2 lb	\$238.50
100 kg	72778	2 lb	\$238.50
<b>OIML with Metric Threads</b>			
3 kg	121396	2 lb	\$238.50
5 kg	121397	2 lb	\$238.50
7 kg	121398	2 lb	\$238.50
10 kg	121399	2 lb	\$238.50
15 kg	121400	2 lb	\$238.50
20 kg	121401	2 lb	\$238.50
30 kg	121402	2 lb	\$238.50
50 kg	121403	2 lb	\$238.50
75 kg	124835	2 lb	\$238.50
100 kg	121404	2 lb	\$238.50



**Interchangeable Products**

RICE LAKE WEIGHING SYSTEMS

**RLPWM15**..... page 189

VPG® TEDEA-HUNTLEIGH

**1142\***..... page 354

\*Color code is different



**APPROVALS**



**Specifications**

**Full Scale Output:**

2.0 mV/V

**Output Resistance:**

359 (± 5) ohms

**Input Resistance:**

380 (± 15) ohms

**Material/Finish:**

Stainless steel

**Temperature:**

Compensated range  
14°F to 104°F (-10°C to 40°C)  
Operating range  
0° F to 150° F (-18° C to 65° C)

**Seal Type:**

Environmentally sealed, IP67

**Safe Overload:**

150% full scale

**Rated Excitation:**

5-10 VDC (15 V maximum)

**Total Error:**

0.02% full scale

**Insulation Resistance:**

1,000 megohms

**Cable Length:**

10 ft

**Cable Diameter:**

0.190 in PVC jacket

**Deflection:**

0.2 mm

**Cable Color Code:**

Blue +Excitation  
Black -Excitation  
White +Signal  
Red -Signal  
Green +Sense  
Grey -Sense

**Warranty:**

One-year limited warranty

**Approvals:**

FM  
NTEP

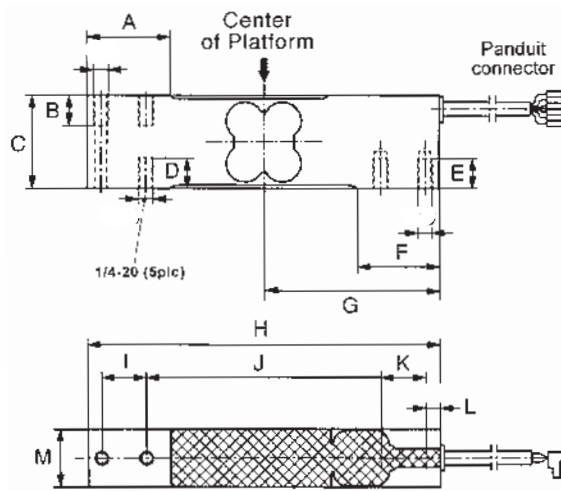
**Dimensions**

Picture is a representation of actual product

Rated Capacity	A	B	C	D	E	F	G	H	I	J	K	L	M
kg/mm													
15-150	35.0	13.0	40.0	13.0	13.0	35.0	75.0	150.0	19.0	100.0	19.0	6.2	25.0

**Order Information**

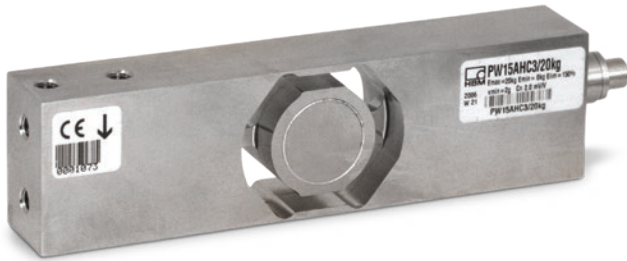
Load Rating	Part #	Est. Weight	Price
15 kg	<b>76771</b>	3 lb	\$387.00
20 kg	<b>76772</b>	3 lb	\$387.00
50 kg	<b>76774</b>	3 lb	\$387.00
75 kg	<b>76775</b>	3 lb	\$387.00
100 kg	<b>76776</b>	3 lb	\$387.00
150 kg	<b>84820</b>	3 lb	\$387.00



# SINGLE POINT PW15AH

Stainless Steel, Hermetically Sealed, NTEP Certified 1:5,000 Class III Single Cell, OIML C3, IP69K

HBM



## APPROVALS



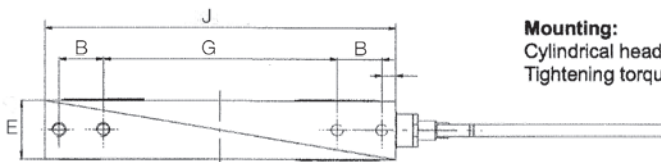
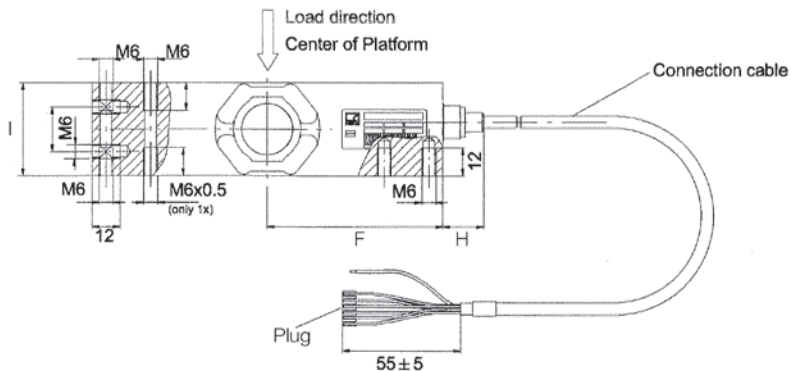
## Dimensions

Picture is a representation of actual product

Rated Capacity	B	E	F	G	H	I	J
kg/mm							
10-100	19.0	25.0	75.0	100.0	17.5	40.0	150.0

## Order Information

Load Rating	Part #	Est. Weight	Price
10 kg	101915	3 lb	\$715.50
20 kg	101916	3 lb	\$715.50
50 kg	101917	3 lb	\$715.50
100 kg	101918	3 lb	\$715.50



**Mounting:**  
Cylindrical head screw M6-10.9  
Tightening torque: 14 N·m

## Interchangeable Products

RICE LAKE WEIGHING SYSTEMS

RLPWM15.....page 189

FLINTEC®

PC4.....page 254

## Specifications

### Full Scale Output:

2.0 mV/V

### Output Resistance:

350 (± 10) ohms

### Input Resistance:

380 (± 15) ohms

### Material/Finish:

Stainless steel

### Temperature:

Compensated range  
14°F to 104°F (-10°C to 40°C)  
Operating range  
0° F to 150° F (-18° C to 65° C)

### Seal Type:

Hermetically sealed, IP69K

### Safe Overload:

150% full scale

### Rated Excitation:

5-10 VDC (15 V maximum)

### Combined Error:

0.02% full scale

### Insulation Resistance:

1,000 megohms

### Cable Length:

10 ft

### Cable Diameter:

0.212 in PVC jacket

### Cable Color Code:

Blue +Excitation  
Black -Excitation  
White +Signal  
Red -Signal  
Green +Sense  
Grey -Sense

### Warranty:

One-year limited warranty

### Approvals:

NTEP  
OIML  
FM

www.ricelake.com | Phone: 800-472-6703





**Interchangeable Products**

RICE LAKE WEIGHING SYSTEMS

**RL1380**..... page 199

FLINTEC®

**PC3**..... page 253

**Specifications**

**Full Scale Output:**  
2.0 mV/V

**Output Resistance:**  
359 (± 10) ohms

**Input Resistance:**  
390 (± 15) ohms

**Material/Finish:**  
Stainless steel

**Temperature:**  
Compensated range  
14°F to 104°F (-10°C to 40°C)  
Operating range  
0° F to 150° F (-18° C to 65° C)

**Seal Type:**  
Environmentally sealed, IP67

**Safe Overload:**  
150% full scale

**Rated Excitation:**  
5-10 VDC (15 V maximum)

**Combined Error:**  
0.03% Full scale

**Insulation Resistance:**  
5,000 megohms

**Cable Length:**  
10 ft

**Cable Diameter:**  
0.190 in polyurethane jacket

**Cable Color Code:**  
Green +Excitation  
Black -Excitation  
White +Signal  
Red -Signal  
Yellow Shield

**Deflection:**  
<0.4 mm full scale

**Warranty:**  
One-year limited warranty

**Approvals:**  
FM  
NTEP  
OIML

**APPROVALS**



**Dimensions**

Picture is a representation of actual product

Rated Capacity	A	B	C	D	E	F	G
kg/mm							
7-15	30.2	139.7	19.1	6.4	88.9	1/4-20 UNC	19.1
30-60	30.2	139.7	19.1	6.4	88.9	1/4-20 UNC	23.9
100-150	30.2	139.7	22.3	7.8	79.2	3/8-16 UNC	30.7

**Order Information**

Load Rating	Part #	Est. Weight	Price
7 kg	<b>36185</b>	2 lb	\$387.00
10 kg	<b>36186</b>	2 lb	\$387.00
15 kg	<b>36187</b>	2 lb	\$387.00
30 kg	<b>36188</b>	2 lb	\$387.00
60 kg	<b>36189</b>	2 lb	\$387.00
100 kg	<b>68551</b>	2 lb	\$387.00
150 kg	<b>69345</b>	2 lb	\$387.00

