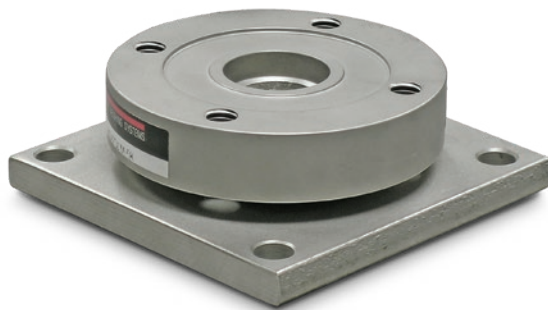


RL9000TWM-HT

Stainless Steel, High Temperature, Weigh Module



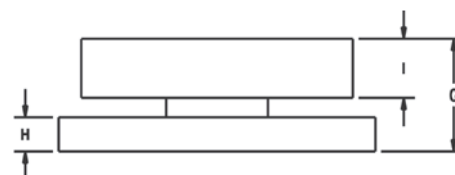
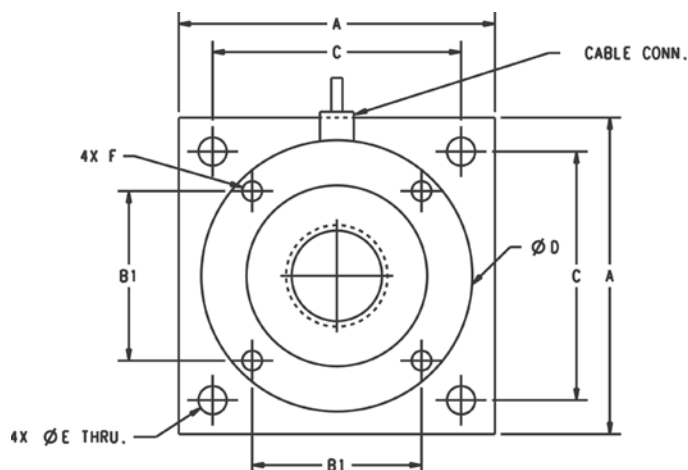
Picture is a representation of actual product.

Order Information

Load Rating (per module)	Part #	Price
Single Module		
1,000 lb	117050	Consult
2,500 lb	117051	Consult
5,000 lb	117052	Consult
10,000 lb	117140	Consult
15,000 lb	117053	Consult
20,000 lb	117054	Consult
25,000 lb	117055	Consult
35,000 lb	117056	Consult
50,000 lb	117057	Consult
Top Plates (Stainless Steel) with bolts		
1,000 to 15,000 lb	91207	Consult
20,000 to 50,000 lb	91210	Consult
Top Plates (Mild Steel) with bolts		
1,000 to 15,000 lb	124758	Consult
20,000 to 50,000 lb	125141	Consult

Dimensions

Rated Capacity	A	B1	C	D	E	F	G	H	I	Conduit Adapter
lb/in										
1,000 to 10,000	4.00	2.00	3.25	3.50	0.40	3/8-16 UNC	1.35	0.375	0.75	-
15,000	4.00	2.00	3.25	3.50	0.40	3/8-16 UNC	1.60	0.625	0.75	-
20,000 to 50,000	7.00	3.75	5.50	6.00	0.63	1/2-13 UNC	2.48	0.750	1.30	1/2-14NPT



Standard Features

- Capacities: 1,000 to 50,000 lb
- Stainless steel construction
- Low-profile design
- Self-centering
- Self-checking assembly
- Offers 100% side load, 100% uplift, 150% safe load and 300% ultimate overload protection
- Weighs accurately with up to 3° non-parallel load

Applications

- Tank, hopper, or vessel weighing
- High temperature applications

Optional Features

- Stainless steel top plates
- Higher capacities available upon request

Specifications

Full Scale Output:

3.0 (± 0.1%) mV/V

Bridge Resistance:

700 ohm

Material/Finish:

Stainless steel

Temperature:

Operating:
0 °F to 400 °F (-17 °C to 204 °C)

Seal Type:

Welded seal, IP67

Safe Overload:

150% full scale

Nonlinearity:

0.01% full scale

Insulation Resistance:

5,000 megohm

Non-repeatability:

0.02% full scale

Deflection at Capacity:

1,000 to 15,000 lb: 0.002 in
20,000 to 50,000 lb: 0.004 in

Cable Length:

25 ft PTFE jacket

Cable Color Code:

Green +Excitation
Black -Excitation
White +Signal
Red -Signal

Warranty:

Two-year limited