

RL32218S-HE

Stainless Steel, Hermetically Sealed, NTEP Certified 1:5,000 Class III Multiple Cell, IP69K



Picture is a representation of actual product.

Approvals



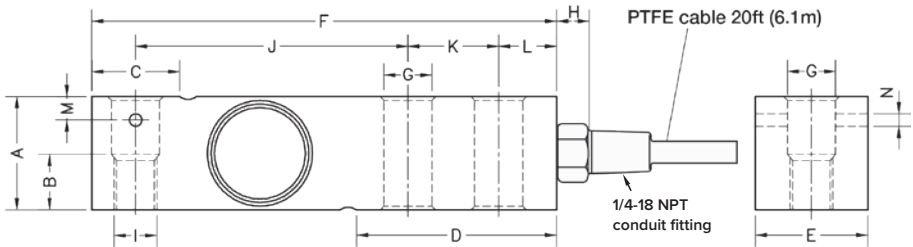
Order Information

Load Rating	Part #	Est. Weight	Price
RL32218S-HE PTFE Cable			
1,000 lb	191634	3 lb	Consult
2,500 lb	191635	3 lb	Consult
4,000 lb	191636	3 lb	Consult
5,000 lb SE	208669	3 lb	Consult
5,000 lb LE	191637	5 lb	Consult
10,000 lb	191638	5 lb	Consult
RL32218S-HE Rodent Protection Cable			
1,000 lb	223599	3 lb	Consult
2,500 lb	209620	3 lb	Consult
4,000 lb	223600	3 lb	Consult
5,000 lb LE	223601	5 lb	Consult
10,000 lb	222973	5 lb	Consult

SE=small envelope; LE=large envelope

Dimensions

Rated Capacity	A	B	C	D	E	F	G	H	I	J	K	L	M	N
lb/in														
1,000 to 5,000 SE	1.24	0.59	0.96	2.20	1.24	5.12	0.53	0.70	1/2-20 UNF	3.00	1.00	0.62	0.25	0.13
5,000 LE to 10,000	1.50	0.75	1.45	2.99	1.50	6.75	0.80	0.70	3/4-16 UNF	3.75	1.50	0.75	-	-



Interchangeable Products

RICE LAKE WEIGHING SYSTEMS

RL35082

RICE LAKE WEIGHING SYSTEMS

RL32019S-HE.....page 109

VPG® SENSORTRONICS®

65083S.....page 285

Weigh Module Available

RICE LAKE WEIGHING SYSTEMS

RL50210TA.....page 41

RICE LAKE WEIGHING SYSTEMS

RL1800 Series.....page 52

Specifications

Full Scale Output:

2.0 mV/V ± 0.05%
mV/V/ohm calibration

Output Resistance:

350 (± 3) ohm

Input Resistance:

400 (± 20) ohm

Material/Finish:

Stainless steel

Temperature:

Compensated:
14 °F to 104 °F (-10 °C to 40 °C)

Operating:
0 °F to 200 °F (-18 °C to 93 °C)

Seal Type:

Hermetically sealed, IP69K

Safe Overload:

150% full scale

Rated Excitation:

5 to 10 VDC (15 V maximum)

Combined Error:

0.017% full scale

Insulation Resistance:

> 5,000 megohm

Cable Length:

20 ft PTFE cable
30 ft RP

Cable Color Code:

Red +Excitation
Black -Excitation
Green +Signal
White -Signal

Warranty:

Two-year limited

Approvals:

cFMus
NTEP 18-106