

# Contego-Hygienic Weigh Module Kits

Lateral Cable Outlet



Junction box not shown

## Load Cell Certifications



## Options/Accessories

Part #	Type	Minebea Part #	Description	Price
160438	PR6041/80S	9405 360 41802	Bottom plate, tank leg connection	Consult

## Lateral Cable Outlet Options

Part #	Minebea Part #	Total Capacity		Load Cell Capacity		Price
3-Module Kit						
158832	CTG-332A-U	660 lb	300 kg	220 lb	100 kg	Consult
158834	CTG-632A-U	1,300 lb	600 kg	440 lb	200 kg	Consult
158892	CTG-932A-U	1,900 lb	900 kg	660 lb	300 kg	Consult
158837	CTG-1532A-U	3,300 lb	1500 kg	1,100 lb	500 kg	Consult
158839	CTG-3032A-U	6,600 lb	3000 kg	2,200 lb	1,000 kg	Consult
158841	CTG-6032A-U	13,200 lb	6,000 kg	4,400 lb	2,000 kg	Consult
4-Module Kit						
158833	CTG-442A-U	880 lb	400 kg	220 lb	100 kg	Consult
158835	CTG-842A-U	1,700 lb	800 kg	440 lb	200 kg	Consult
158836	CTG-1242A-U	2,500 lb	1200 kg	660 lb	300 kg	Consult
158838	CTG-2042A-U	4,400 lb	2000 kg	1,100 lb	500 kg	Consult
158840	CTG-4042A-U	8,800 lb	4000 kg	2,200 lb	1,000 kg	Consult
158842	CTG-8042A-U	17,600 lb	8000 kg	4,400 lb	2,000 kg	Consult

Complete Kit Includes:

Contega load cell, junction box, load cell extension cable

## Dimensions

Rated Capacity	A	B	C	D	E	F	G	H
in/mm								
Lateral cable	8.3 in (210 mm)	3.7 in (94 mm)	1.9 in (47 mm)	3.7 in (94 mm)	0.5 in (12 mm)	1.9 in (47 mm)	1.1 in (29 mm)	2.4 in (60 mm)

The protective cover made of FDA-compliant silicone ensures a reliable encapsulation of the module and prevents the intrusion of dirt and microorganisms. The connecting geometry between protective cover and mounting plates guarantees a safe fitting and, together with the already excellent resistance to aging of the silicone, ensures reliable protection over years.

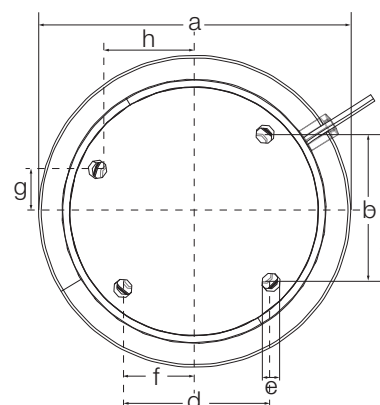
The Contego® weighing module therefore represents an absolutely hygienic unity of load cell and installation kit. As a result, you can refrain from using other expensive and complicated constructions to protect the weighing technology against dirt.

Besides the hygienic aspect, the Contego weighing module provides all the other important mechatronic functions for a fast operational startup and reliable results. The integrated constraint holds the process vessel in the proper position and, at the same time, allows movement through thermal expansion of the vessel. The integrated lift-off protector is a reliable safety feature to protect the vessel from tilting. At the same time, this feature can be used as a lifting system as well. This way, the vessel leg can be raised a few millimeters without using supplemental tools.

A PR6241 S-type load cell is used with this module. This series is distinguished by its unmatched reliability, robustness and stability, enabling years of undisturbed usage without any readjustment, in addition to the high measuring accuracy and reproducibility.

## Standard Features

- Compact and absolute hygienic weighing solution for a load range up to 2 t
- Quick and seamless installation
- Easy cleaning without residue
- High chemical resistance
- Protective cover made of FDA-compliant silicone
- Integrated S-like lift-off protector and jack-up function with constrainer for horizontal forces
- Proven rocker pin principle for accurate repeatability
- 10,000 divisions
- Load cell, 2 mV/V
- 15-year load cell warranty
- 30 kN destructive lateral force and 8 kN permissible lift-off protection



PRECISION  
INDUSTRIAL WEIGHING