

# Monorail Scales

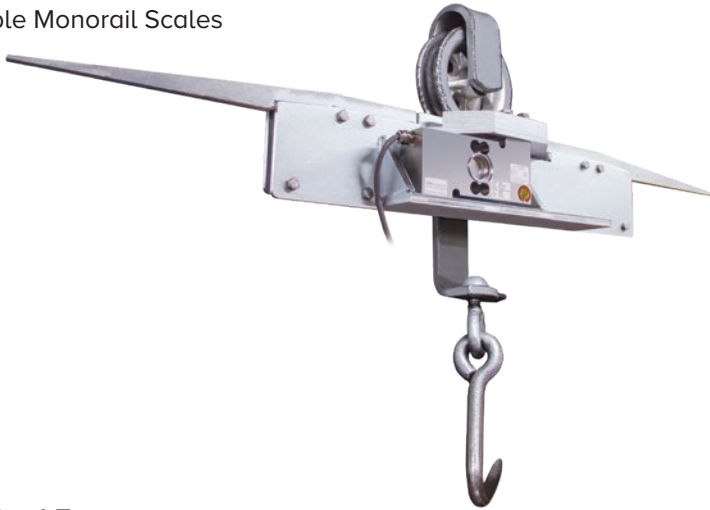
## TABLE OF CONTENTS

<b>MS200</b> .....	<b>794</b>
<i>Portable Monorail Scales</i>	
<b>MS202</b> .....	<b>795</b>
<i>Permanent Monorail Scales</i>	

*The following product names, logos, brands, and other trademarks featured or referred to within this publication are the property of their respective trademark holders.*

# MS200

Portable Monorail Scales



## Specifications

### Construction:

Zinc-plated steel construction, stainless steel hardware

### Load Cell Construction:

Stainless steel

### Bridge Resistance:

350 ohms nominal

### Rated Output:

2 mV/V

### Nonlinearity:

0.03% full scale

### Approvals:

NTEP CC 90-003, Class III, nmax 1500

### Warranty:

One-year limited

## Standard Features

- 8-in live-rail designed to weigh one trolley at a time
- 750 x 0.5 lb resolution in both portable and permanent models
- Compatible with both 3/8 in and 1/2 in rails
- Requires less than 41 in of straight rail to install
- Zinc-plated, steel construction
- 25 ft of load cell cable for flexible installation
- Slightly recessed live-rail for the trolley roller provides stable weighments

## APPROVALS

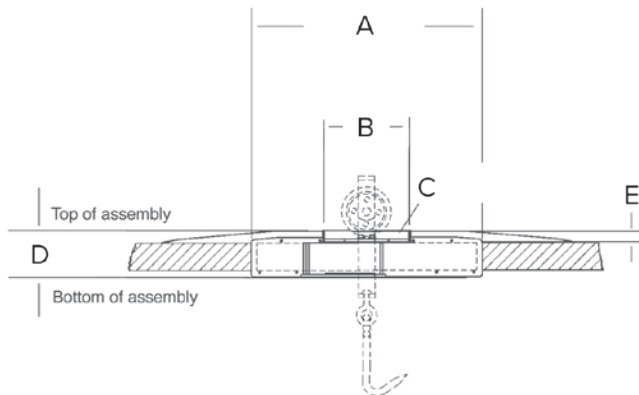


## Part Number/Price (Scale Only)

Part #	Description	Est. Weight	Price
19743	MS200HB, NTEP Certified portable	38 lb	\$2,225.00
167585	Load cell, 500 kg 2 mv/v 350 ohm SST construction, with 25 ft of cable	6 lb	\$842.00

## Options/Accessories

Part #	Description	Price
16984	Additional operating manual	\$5.00



## Dimensions

A	21.0 in (533.4 mm)
B	8.0 in (203.2 mm)
C	8.0 in live rail (203.2 mm)
D	4.5 in (114.3 mm)
E	1.13 in (28.7 mm)

# MS202

Permanent Monorail Scales

## Specifications

**Construction:**

Zinc-plated steel construction  
(part number 19744, 19745)  
Stainless steel construction  
(part number 196885, 196888)

**Load Cell Construction:**

Stainless steel

**Bridge Resistance:**

350 ohms nominal

**Rated Output:**

2 mV/V

**Nonlinearity:**

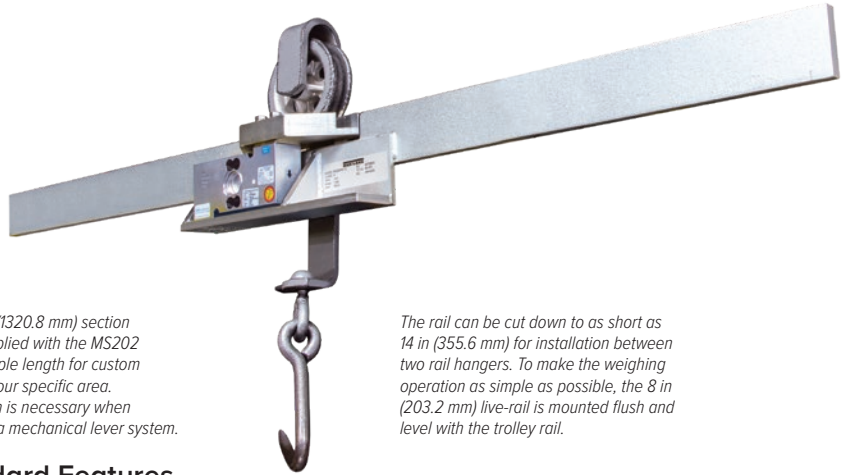
0.03% full scale

**Approvals:**

NTEP CC 90-003, Class III, nmax 1500  
Measurement Canada

**Warranty:**

One-year limited



The 52 in (1320.8 mm) section of rail supplied with the MS202 allows ample length for custom fitting to your specific area. This length is necessary when replacing a mechanical lever system.

The rail can be cut down to as short as 14 in (355.6 mm) for installation between two rail hangers. To make the weighing operation as simple as possible, the 8 in (203.2 mm) live-rail is mounted flush and level with the trolley rail.

## Standard Features

- 8-in live-rail designed to weigh one trolley at a time
- 750 x 0.5 lb resolution in both portable and permanent models
- Available for rail sizes 3/8 x 2 1/2 in or 1/2 x 2 1/2 in
- Requires less than 41 in of straight rail to install (14 in between rail hangers for permanent model)
- Zinc-plated, steel construction
- High accuracy, stainless steel load cell
- 25 ft of load cell cable for flexible installation
- Slightly recessed live-rail for the trolley roller provides stable weighments

## APPROVALS



## Part Number/Price (Scale Only)

Part #	Description	Est. Weight	Price
19744	MS202HB-3/8 in	38 lb	\$2,225.00
19745	MS202HB-1/2 in	38 lb	\$2,225.00
196885	MS202HB-SS 3/8 in, SST rail	38 lb	\$2,500.00
196888	MS202HB-SS 1/2 in, SST rail	38 lb	\$2,500.00
167585	Load cell, 500 kg 2 mv/v 350 ohm SST construction, with 25 ft of cable	6 lb	\$842.00

## Options/Accessories

Part #	Description	Price
16984	Additional operating manual	\$5.00

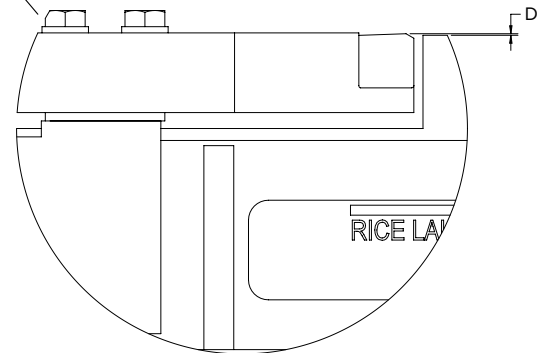
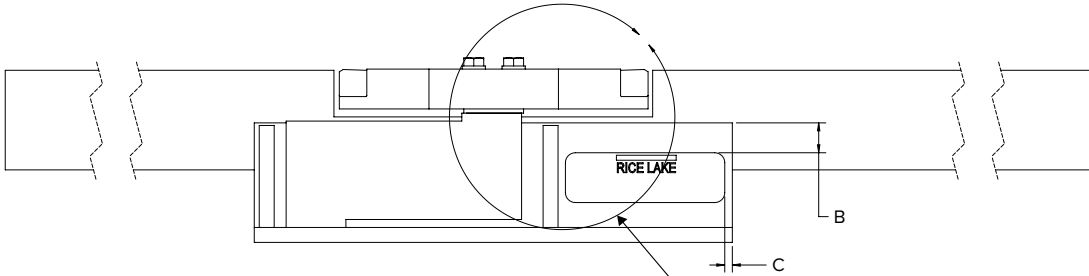
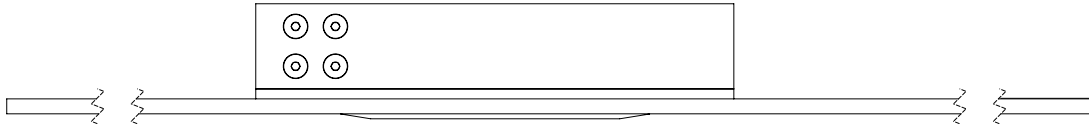
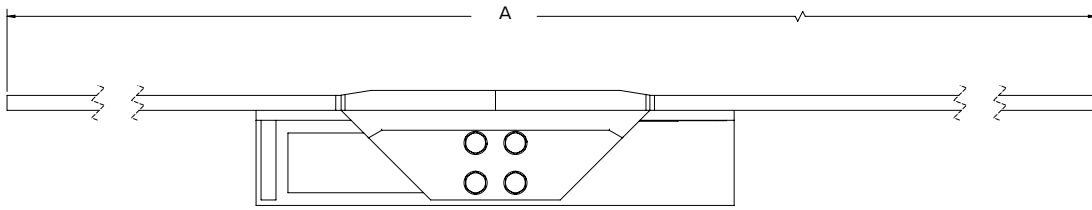
MONORAIL SCALES

www.ricelake.com | Phone: 800-472-6703

RICE LAKE

# MS202

Permanent Monorail Scales



Dimensions	
A	52.00±0.03 in
B	0.75 in
C	0.19 in
D	0.060/0.020 in