

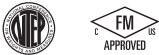
RL1900 Series

Stainless Steel, Weigh Module Kit



Picture is a representation of actual product.

Load Cell Approvals

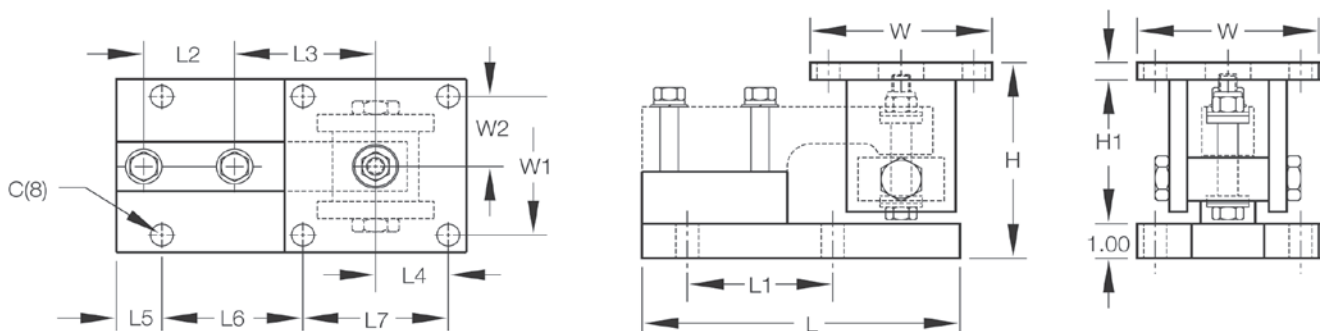


Order Information

Load Rating (Per Module)	Part #	Price
Single Module (Does NOT Include Load Cell)		
1,000 to 5,000 lb	17841	Consult
10,000 lb	17843	Consult
3-Module Kit		
1,000 lb	18109	Consult
2,000 lb	18110	Consult
5,000 lb	18111	Consult
10,000 lb	18112	Consult
4-Module Kit		
1,000 lb	18113	Consult
2,000 lb	18114	Consult
5,000 lb	18115	Consult
10,000 lb	18116	Consult

Dimensions

Rated Capacity C	H Min/Max	H1	L	L1	L2	L3	L4	L5	L6	L7	W	W1	W2
lb/in													
1,000 to 5,000	0.62	5.38/5.62	0.50	8.75	4.00	2.50	3.88	2.00	1.12	4.00	4.00	5.00	4.00
10,000	0.81	6.88/7.50	1.00	9.75	5.00	2.63	4.88	2.25	1.00	5.00	4.50	6.00	4.50



Complete Kit Includes

- Three or four RL1900 stainless steel compression mounts with RLSSB NTEP Certified welded stainless steel single-ended beam load cells
- One JB4SS NEMA Type 4X stainless steel signal trim junction box
- 25 ft of hostile environment EL147HE SURVIVOR® load cell cable

Standard Features

- Capacities (per module): 1,000 to 10,000 lb
- NTEP Certified load cells, 1:5000 d, Class III single cell
- Stainless steel construction
- Mild steel top plate
- Low-profile design
- Center-pivoted, tension loading design
- Welded-seal stainless steel load cells, IP67
- Self-checking, multi-directional movement
- Easy load cell replacement
- Load is suspended on a high-strength bolt instead of wire rope
- Design incorporates spherical washers
- Compatible with VPG® Revere SSB load cells
- Stainless steel top plates optional

Applications

- Medium-capacity tanks, bins and hoppers
- Washdown or corrosive applications

WEIGH MODULES