

## CLS-M Forklift

# iQube<sup>2</sup>® Firmware Update

This document contains instructions for updating the *CLS-M Forklift iQube<sup>2</sup>* firmware.

Requirements for Procedure:

- CLS-M Forklift Scale with the red iQube2.3 junction box
- Laptop with latest version of Revolution<sup>®</sup> installed
- USB Micro-A cable (PN 152434)

### Revolution Connection

Use a USB Micro-A cable to connect the iQube<sup>2</sup> to the laptop with Revolution on it.

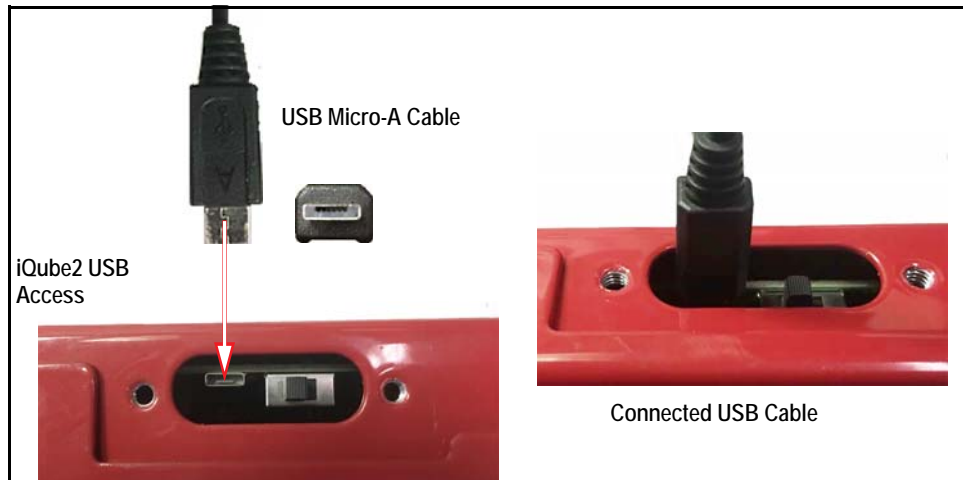


Figure 1. Access and Connection to Junction Box

1. Loosen the two screws and remove the access plate from the top plate of the scale to expose the iQube<sup>2</sup> setup switch and USB connection.
2. Plug the USB Micro-A cable into the USB connection on the iQube<sup>2</sup>.
3. Plug the other end into the laptop.
4. Power on the laptop and open Revolution.
5. Press **File**, then select **New** to start a new session. The product selection menu displays.



Figure 2. Start New Session

6. Scroll down to select the latest version of the *CLS-M Forklift*, then press . The CLS-M home menu displays.

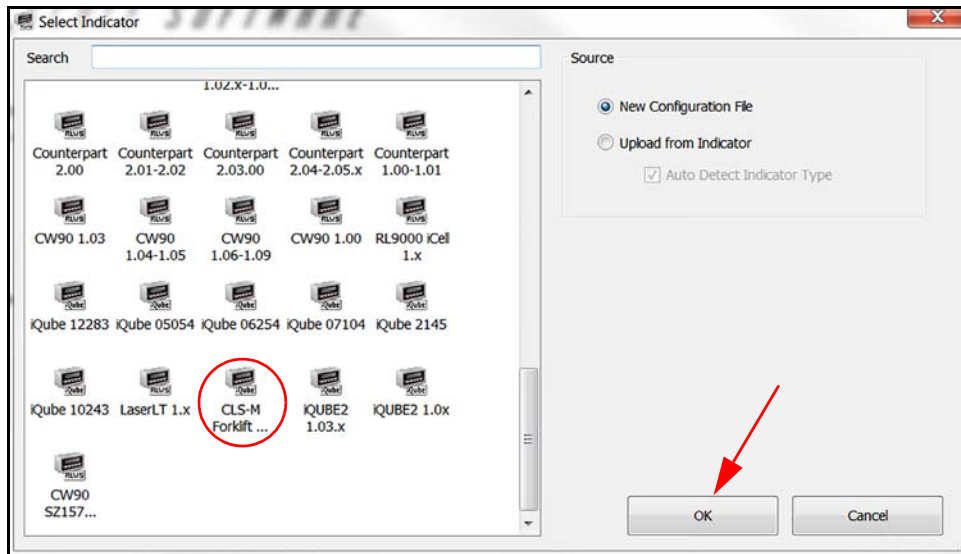

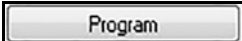
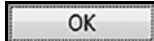


Figure 3. Product Selection Menu

7. Access the Windows Device Manager, then Ports (Com and LPT) to identify the Com port assigned to the iQube2. Ensure the iQube2 is assigned to a port between Com1 - Com8. To re-assign the Com Port, right click on the device and select properties, port settings, then advanced.
8. Press **Update iQube2 Firmware**. The *iQube2 Updater* displays.
9. Select the Com Port assigned in Step 7, (Com1 - Com8).
10. Press  and navigate to the location of the hex file needed.
11. Press . When the *Programming Complete* popup displays, press .

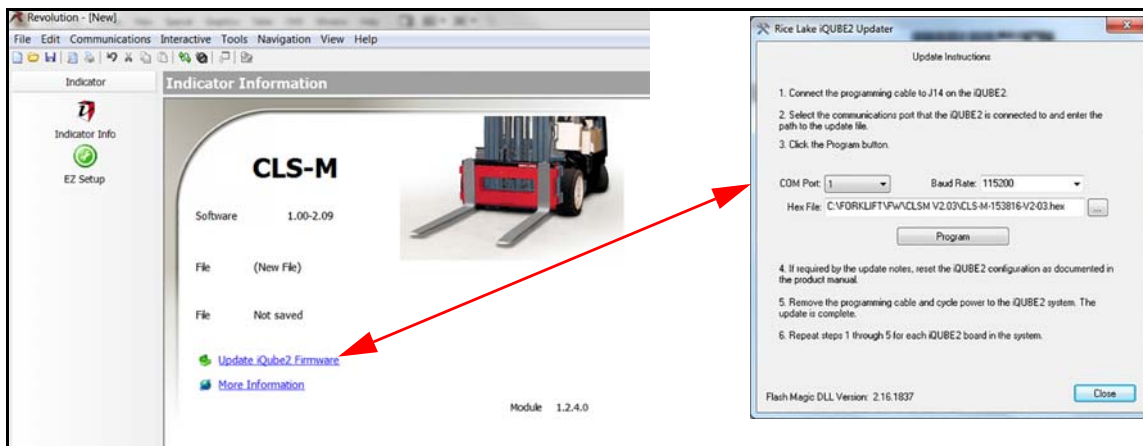


Figure 4. CLS-M Forklift Menus

12. Remove the cable from the laptop and then the iQube2.
13. Perform zero angle calibration.
14. Perform calibration.

The forklift scale is now ready for use.



© Rice Lake Weighing Systems Specifications subject to change without notice.  
Rice Lake Weighing Systems is an ISO 9001 registered company.

230 W. Coleman St. • Rice Lake, WI 54868 • USA  
U.S. 800-472-6703 • Canada/Mexico 800-321-6703 • International 715-234-9171 • Europe +31 (0)26 472 1319