

Counterpart®

CONFIGURABLE
COUNTING INDICATOR



RICE LAKE
WEIGHING SYSTEMS

800-472-6703

www.ricelake.com

Transform Any Scale into a Parts Counter

The Counterpart configurable indicator counts any part, from tiny resistors to heavy engine components, accurately, quickly and easily. Counterpart is designed to interface with most scale bases, balances, scanners, label printers and text printers—regardless of the manufacturer.

Simple for Operators

Counterpart is loaded with user-friendly features designed to help operators produce perfect results by simply following the keys from left to right. Simultaneously view weight, piece weight, ID code and quantity.

Streamline Your Counting Operation

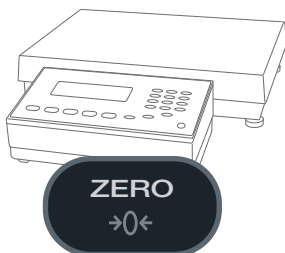
Counterpart is rugged, lightweight and portable—enabling easy transport throughout a plant. An optional rechargeable battery provides hours of portable counting power. Onboard Ethernet can transmit scale data to most software, and dual RS-232 ports interface with bar code scanners and label printers. Eliminate manual entry errors by using up to 150 onboard product IDs and digitally capturing piece weight, tare weight and inventory balance. Connect to optional WeighVault® PC software for unlimited ID storage.



1

ZERO

With nothing on the scale, press the Zero key to acquire a zero weight.



2

TARE

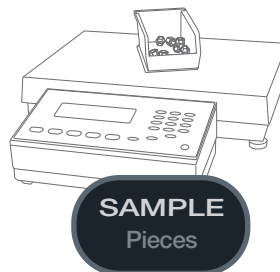
Place your container on the scale and press Tare.



3

SAMPLE

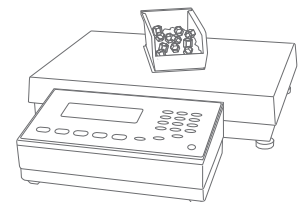
Place a 10-piece sample on the scale and press Sample.



4

COUNT

Place items on the scale and the quantity will be displayed.





CAPACITY 25 kg

155

ZERO

ON/OFF

TARE

SAMPLE

PRINT

1

2

3

4

5

6

7

8

9

0

←

→

↺

↻

⏻

⏹

⏻

⏻

⏻

⏻

⏻

⏻

⏻

⏻

⏻

⏻

⏻

⏻

⏻

⏻

⏻

⏻

⏻

⏻

⏻

⏻

⏻

⏻

⏻

⏻

⏻

⏻

⏻

⏻

⏻

⏻

⏻

⏻

⏻

⏻

⏻

⏻

⏻

⏻

⏻

⏻

⏻

⏻

⏻

⏻

⏻

⏻

⏻

⏻

⏻

⏻

⏻

⏻

⏻

⏻

Counterpart®

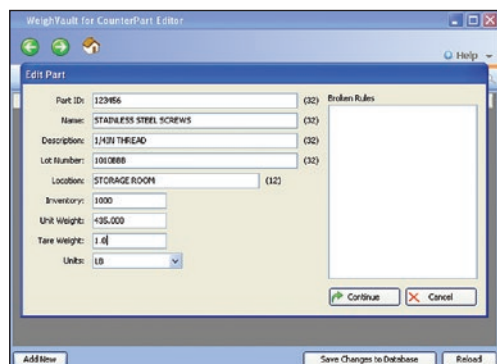
CONFIGURABLE COUNTING INDICATOR



Part #	Description	Capacity	Platter Dimensions
118788	CP Single Channel Indicator	Console only	N/A
120770	CP Dual Channel Indicator	Console only	N/A
Single Channel with DIGI S-YC base system and bracket			
155089	CP-1	1 x 0.0001 lb / 500 x 0.05 g	7.9 x 5.6 in / 200 x 142 mm
155090	CP-2	2 x 0.0002 lb / 1 x 0.0001 kg	9.6 x 6.9 in / 244 x 175 mm
155092	CP-5	5 x 0.0005 lb / 2 x 0.0002 kg	13.4 x 11 in / 341 x 284 mm
155094	CP-10	10 x 0.001 lb / 5 x 0.0005 kg	13.4 x 11 in / 341 x 284 mm
155097	CP-25	25 x 0.002 lb / 10 x 0.001 kg	13.4 x 11 in / 341 x 284 mm
155101	CP-50	50 x 0.005 lb / 20 x 0.002 kg	13.4 x 11 in / 341 x 284 mm
Dual Channel with DIGI S-YC base system and bracket (second channel available for use with other bases)			
155115	CP-1	1 x 0.0001 lb / 500 x 0.05 g	7.9 x 5.6 in / 200 x 142 mm
155116	CP-2	2 x 0.0002 lb / 1 x 0.0001 kg	9.6 x 6.9 in / 244 x 175 mm
155117	CP-5	5 x 0.0005 lb / 2 x 0.0002 kg	13.4 x 11 in / 341 x 284 mm
155118	CP-10	10 x 0.001 lb / 5 x 0.0005 kg	13.4 x 11 in / 341 x 284 mm
155119	CP-25	25 x 0.002 lb / 10 x 0.001 kg	13.4 x 11 in / 341 x 284 mm
155120	CP-50	50 x 0.005 lb / 20 x 0.002 kg	13.4 x 11 in / 341 x 284 mm
Dual Channel with BenchMark™ base system and bracket (second channel available for use with other bases)			
125113	CP-50BM	50 x 0.01 lb / 20 x 0.002 kg	12 x 18 in / 304.8 x 457.2 mm
125116	CP-100BM	100 x 0.02 lb / 50 x 0.005 kg	12 x 18 in / 304.8 x 457.2 mm

WeighVault®

WeighVault for Counterpart is a comprehensive software package that stores and manages data on your PC. Create custom reports for inventory, threshold, location and more. WeighVault for CounterPart is designed for operators with minimal computer experience and managers who require quick and accurate information. Scales can be added or moved on-the-fly without interrupting other scales operating on the network. WeighVault for Counterpart is the solution for real-time inventory management.



SALES AND TECHNICAL ASSISTANCE

STANDARD FEATURES

- AC operation (battery operation is optional)
- LCD graphical transmissive display for indoor viewing
- Lb/kg/oz/g weight display conversion
- Single or dual channel models with serial scale input
- Four setpoint outputs for counting or weighing
- Two RS-232 ports for connecting peripherals such as bar code scanners and label printers
- Ethernet TCP/IP
- Scanner input (RS-232)
- Revolution® PC software for setup
- 150 item memory

OPTIONS/ACCESSORIES

- Choose from dual-scale or single-scale consoles
- WeighVault® for Counterpart PC software expands ID storage
- Rechargeable lithium-ion battery
- Wireless LAN card WIFI 802.11 A/B
- Stand, angled free standing for tabletop
- USB host card for connecting keyboard

SPECIFICATIONS

POWER SOURCE:	Input: 100-240 VAC, 47-63Hz, 5 watts, U.S. power cord Output: 9-12 V, 1.5A max 5 VDC
EXCITATION VOLTAGE:	5 VDC
ANALOG SIGNAL INPUT RANGE:	0-4.5mV/V
ANALOG SPECIFICATIONS:	Grad minimum: .3 µV/grad Input sensitivity: 1.5 µV/grad recommended Zero adjustment range: 0-100% or per region settings A/D conversion rate: 7.5, 15, 30 samples per second Load cells per scale: 8 x 3500; 16 x 7000 Scale channels: 1 or 2 Linearity: ±0.017 full scale
CIRCUIT PROTECTION:	RFI, EMI, ESD protection
DIGITAL I/O:	Four
DISPLAY:	Viewing area: 240 x 64 pixels, transmissive VGA liquid crystal display (LCD) with adjustable contrast
KEYPAD:	24 buttons, full keypad-alpha numeric
RESOLUTION:	Weight display resolution: up to 100,000 graduations Counting resolution: 1/1,000,000
COMMUNICATIONS AND SETPOINT:	Two RS-232 ports support up to 115,200 bps 20mA Ethernet port Setpoint output
STATUS ANNUNCIATORS:	PCS, motion, low battery, insuff, recomp, scale number, gross, net, zero
UNITS OF MEASURE:	Pounds, kilograms, grams, ounces
PRINTS:	Standard EPL label format; format is changeable to work with virtually any printer
OPTIONAL BATTERY:	Type: Lithium ion Charge time: 6 to 8 hours Charge cycles: 400-1200 Estimated runtime: 24-32 hours with one 3500 load cell base
OPERATING TEMPERATURE:	32°F to 104°F (0°C to 40°C)
OPERATING HUMIDITY:	85%
PHYSICAL DIMENSIONS:	Indicator only (L x W x H): 12.25 x 6.25 x 4.0 in (311 x 159 x 102mm)
WARRANTY:	Two-year limited warranty

APPROVALS:



Measurement
Canada
Approved

RICE LAKE®
WEIGHING SYSTEMS

HEADQUARTERS
230 West Coleman Street
Rice Lake, Wisconsin 54868 - USA
Tel: (715) 234 9171 | Fax: (715) 234 6967
www.ricelake.com