

Bench Scales

TABLE OF CONTENTS

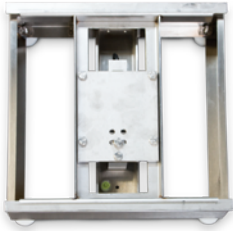
BENCHMARK® SL	166
<i>Light-capacity Bench Scale</i>	
BENCHMARK® CW-80B	168
<i>Light-capacity Bench Scale</i>	
BENCHMARK® SL/HE	170
<i>Light-capacity Bench Scale</i>	
CW-90B	172
<i>Light-capacity Bench Scale</i>	
CW-90XB	173
<i>Light-capacity Bench Scale</i>	
READY-N-WEIGH BENCH SCALE SYSTEM	174
<i>CW-90B Bench Scale and 380 Indicator Package</i>	
<i>CW-90B Bench Scale and 480/480 Plus Indicator Package</i>	
<i>CW-90B Bench Scale and 482/482 Plus Indicator Package</i>	
<i>CW-90B Bench Scale and 680 Indicator Package</i>	
<i>CW-90XB Bench Scale and 380 Indicator Package</i>	
<i>CW-90XB Bench Scale and 480/480 Plus Indicator Package</i>	
<i>CW-90XB Bench Scale and 482/482 Plus Indicator Package</i>	
<i>CW-90XB Bench Scale and 680 Indicator Package</i>	
BENCHMARK® MS	193
<i>Mild Steel Bench Scale</i>	
BENCHMARK® SS	195
<i>Stainless Steel Bench Scale</i>	
BENCHMARK® HE	197
<i>Hostile Environment Series Bench Scale</i>	
BENCHMARK® HE-X	199
<i>Hostile Environment Extreme Bench Scale</i>	
BENCHMARK® LP	201
<i>Low-Profile Bench Scale</i>	
BENCHMARK® HD	202
<i>Heavy Duty Bench Scale</i>	
BENCHMARK® HD-1 AVIATION	203
<i>Heavy Duty Bench Scale</i>	
BENCHMARK® HD-2 AVIATION	205
<i>Heavy Duty Bench Scale</i>	
BENCHMARK® HD-3 AVIATION	207
<i>Heavy Duty Bench Scale</i>	
BENCHMARK® HD-3 AVIATION	208
<i>Heavy Duty Bench Scale</i>	
BENCHMARK® HDP	209
<i>Portable Heavy Duty Bench Scale</i>	
ISHIDA IPC SERIES	210
<i>Portable Bench Scale</i>	

VERSA-PORION®	211
<i>Compact Scale</i>	
ISHIDA IGX SERIES	212
BENCHPRO™ BP-P	213
<i>Postal Bench Scale</i>	
BENCHPRO™ BP-S	215
<i>Shipping Bench Scale</i>	
BENCHPRO™ BP-SB	217
<i>Shipping Bench Scale with Ball Top Shroud</i>	
BENCHPRO™ BP-SR	219
<i>Shipping Bench Scale with Roller Conveyor</i>	
BENCHMARK® MSC-10	221
<i>Mobile Scale Cart</i>	
BENCHMARK® MSC-20	222
<i>Mobile Scale Cart</i>	
BENCHMARK® MSC-30	223
<i>Mobile Scale Cart</i>	
BENCHMARK® MSC-40	224
<i>Mobile Scale Cart</i>	
BENCH SCALE BALL TRANSFER AND ROLLER CONVEYOR	225
BENCH SCALE COLUMNS	226

Product names, logos, brands and other trademarks featured or referred to within this publication are the property of their respective trademark holders.

BenchMark® SL

Light-capacity Bench Scale



Standard Features

- 304 stainless steel construction
- LifeGuard™ base design isolates load cell from overloads and shock loads for added durability
- Specially designed adjustable support feet provide exceptional traction and won't scratch surfaces
- NTEP Certified IP66 aluminum load cell

Specifications

Load Cell, NTEP Certified:

IP66 aluminum and environmentally sealed

Output Impedance:

350 ohm

Maximum Overload:

200%

Overload Protection:

Shock-absorbing spider

Scale Frame:

AISI304L, straight line finish, Ra=45 +/- 10

Scale Cover:

AISI304L, straight line finish, Ra=45 +/- 10

Cable Length:

10 ft (3 m)

Compensated Temperature Range:

14° F to 104° F (-10° C to 40° C)

Warranty:

Two-year limited warranty

Approvals:

NTEP CC 95-072, Class III 5,000 d

Measurement Canada AM-5082 Class III 5,000 d

Load cell is cFMus Approved

APPROVALS



Part Number/Price

Part #	Platform Capacity	Dimensions	Est. Weight	Price
18575*	2 lb (1 kg)	10 × 10 × 3.15 in	13 lb	\$710.00
18576	5 lb (2.5 kg)	10 × 10 × 3.15 in	13 lb	\$710.00
18577	10 lb (5 kg)	10 × 10 × 3.15 in	13 lb	\$710.00
18578	20 lb (10 kg)	10 × 10 × 3.15 in	13 lb	\$710.00
18579	30 lb (15 kg)	10 × 10 × 3.15 in	13 lb	\$710.00
32914	30 lb (15 kg)	12 × 12 × 3.25 in	14 lb	\$800.00
32913	50 lb (25 kg)	12 × 12 × 3.25 in	14 lb	\$800.00
35198	100 lb (50 kg)	12 × 12 × 3.25 in	14 lb	\$800.00

Options/Accessories

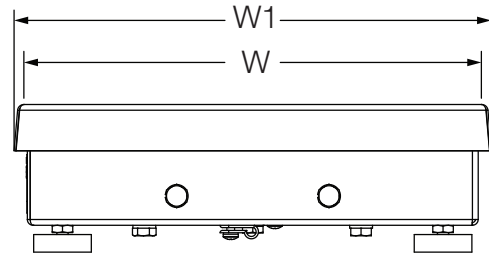
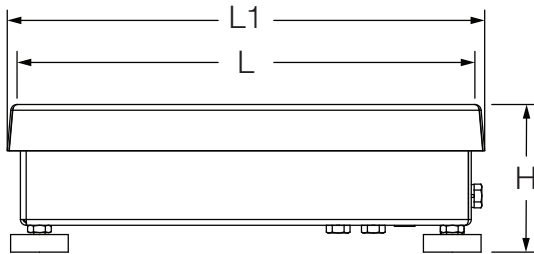
Part #	Description	Catalog Page #
Consult	Scale Columns	See page 226
Consult	Ball Transfer and Roller Conveyor Scale Tops	See page 225
Consult	Mobile Scale Carts	See page 221 to page 224

Dimensions

Part #	Capacity	Platform Size (L × W)	L1/W1	H
18575*	2 lb (1 kg)	10 × 10 in	10.25 in	3.15 in
18576	5 lb (2.5 kg)	10 × 10 in	10.25 in	3.15 in
18577	10 lb (5 kg)	10 × 10 in	10.25 in	3.15 in
18578	20 lb (10 kg)	10 × 10 in	10.25 in	3.15 in
18579	30 lb (15 kg)	10 × 10 in	10.25 in	3.15 in
32914	30 lb (15 kg)	12 × 12 in	12.25 in	3.25 in
32913	50 lb (25 kg)	12 × 12 in	12.25 in	3.25 in
35198	100 lb (50 kg)	12 × 12 in	12.25 in	3.25 in

*Non-NTEP Certified or Measurement Canada approved

Note: 1 in=25.4 mm



BenchMark® CW-80B

Light-capacity Bench Scale



Standard Features

- 304 stainless steel construction
- LifeGuard™ base design isolates load cell from overloads and shock loads for added durability
- Specially designed adjustable support feet provide exceptional traction and won't scratch surfaces
- NTEP Certified, IP67 stainless steel load cell

Specifications

Load Cell, NTEP Certified:

IP67 stainless steel and environmentally sealed

Output Impedance:

350 ohm

Maximum Overload:

200%

Overload Protection:

Shock-absorbing spider

Scale Frame:

AISI304L, straight line finish, Ra=45 +/- 10

Scale Cover:

AISI304L, straight line finish, Ra=45 +/- 10

Cable Length:

10 ft (3 m)

Compensated Temperature Range:

14° F to 104° F (-10° C to 40° C)

Warranty:

Two-year limited warranty

Approvals:

NTEP CC 96-107, Class III, 3000 d

Measurement Canada AM-5156, Class III 3,000 d

Load cell is FM approved

APPROVALS



BenchMark® CW-80B

Light-capacity Bench Scale

Part Number/Price

Part #	Platform Capacity	Dimensions	Est. Weight	Price
35075	6 lb (3 kg)	10 × 10 × 3.15 in	13 lb	\$865.00
35076	10 lb (5 kg)	10 × 10 × 3.15 in	13 lb	\$865.00
35077	15 lb (7 kg)	10 × 10 × 3.15 in	13 lb	\$865.00
35078	30 lb (15 kg)	10 × 10 × 3.15 in	13 lb	\$865.00
35079	30 lb (15 kg)	12 × 12 × 3.25 in	14 lb	\$955.00
35080	60 lb (30 kg)	12 × 12 × 3.25 in	14 lb	\$955.00

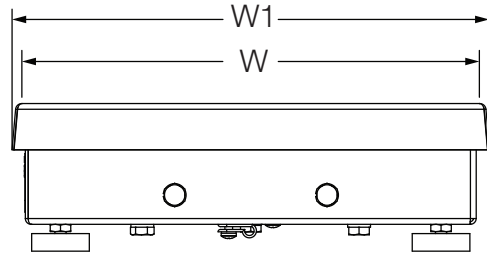
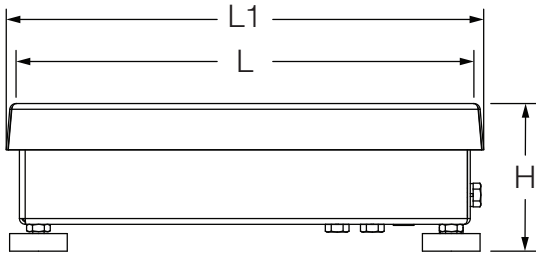
Options/Accessories

Part #	Description	Catalog Page #
Consult	Scale Columns	See page 226
Consult	Ball Transfer and Roller Conveyor Scale Tops	See page 225
Consult	Mobile Scale Carts	See page 221 to page 224

Dimensions

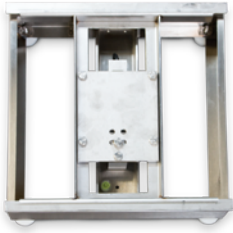
Part#	Capacity	Platform Size (L × W)	L1/W1	H
35075	6 lb (3 kg)	10 × 10 in	10.25 in	3.15 in
35076	10 lb (5 kg)	10 × 10 in	10.25 in	3.15 in
35077	15 lb (7 kg)	10 × 10 in	10.25 in	3.15 in
35078	30 lb (15 kg)	10 × 10 in	10.25 in	3.15 in
35079	30 lb (15 kg)	12 × 12 in	12.25 in	3.25 in
35080	60 lb (30 kg)	12 × 12 in	12.25 in	3.25 in

Note: 1 in=25.4 mm



BenchMark® SL/HE

Light-capacity Bench Scale



Standard Features

- 304 stainless steel construction
- LifeGuard™ base design isolates load cell from overloads and shock loads for added durability
- Specially designed adjustable support feet provide exceptional traction and won't scratch surfaces
- NTEP Certified, IP69K stainless steel, hermetically sealed load cell

Specifications

Load Cell, NTEP Certified:

IP69K stainless steel, hermetically sealed

Output Impedance:

350 ohm

Maximum Overload:

200%, except 150% for 30 lb

Overload Protection:

Shock-absorbing spider

Scale Frame:

AISI304L, straight line finish, Ra=45 +/- 10

Scale Cover:

AISI304L, straight line finish, Ra=45 +/- 10

Cable Length:

10 ft (3 m)

Compensated Temperature Range:

14° F to 104° F (-10° C to 40° C)

Warranty:

Three-year limited warranty
(includes water ingress)

Approvals:

NTEP CC 95-072, Class III 5,000 d

Measurement Canada AM-5082, Class III 5,000 d

Load cell is FM approved

APPROVALS



Part Number/Price

Part #	Platform Capacity	Dimensions	Est. Weight	Price
86942	5 lb (2.5 kg)	10 × 10 × 3.15 in	13 lb	\$1,288.00
86943	10 lb (5 kg)	10 × 10 × 3.15 in	13 lb	\$1,288.00
86944	20 lb (10 kg)	10 × 10 × 3.15 in	13 lb	\$1,288.00
86945	30 lb (15 kg)	10 × 10 × 3.15 in	13 lb	\$1,288.00
86946	30 lb (15 kg)	12 × 12 × 3.25 in	13 lb	\$1,378.00
86947	50 lb (25 kg)	12 × 12 × 3.25 in	14 lb	\$1,378.00
86948	100 lb (50 kg)	12 × 12 × 3.25 in	14 lb	\$1,378.00

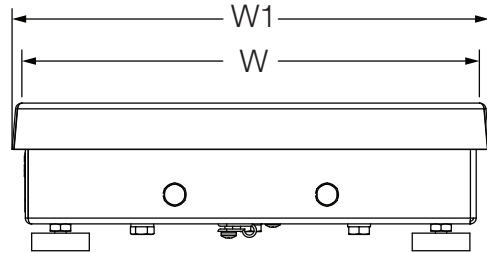
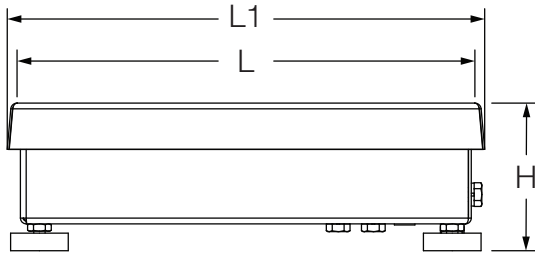
Options/Accessories

Part #	Description	Catalog Page #
Consult	Scale Columns	See page 226
Consult	Ball Transfer and Roller Conveyor Scale Tops	See page 225
Consult	Mobile Scale Carts	See page 221 to page 224

Dimensions

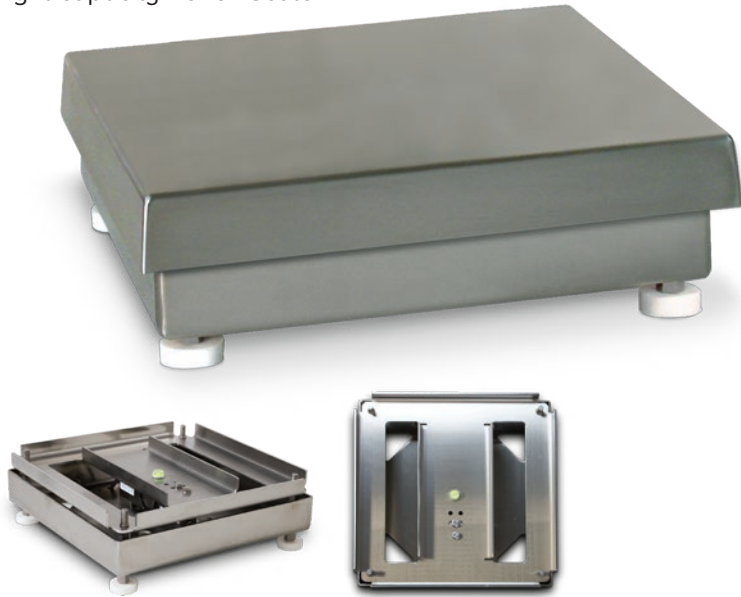
Part #	Capacity	Platform Size (L × W)	L1/W1	H
86942	5 lb (2.5 kg)	10 × 10 in	10.25 in	3.15 in
86943	10 lb (5 kg)	10 × 10 in	10.25 in	3.15 in
86944	20 lb (10 kg)	10 × 10 in	10.25 in	3.15 in
86945	30 lb (15 kg)	10 × 10 in	10.25 in	3.15 in
86946	30 lb (15 kg)	12 × 12 in	12.25 in	3.25 in
86947	50 lb (25 kg)	12 × 12 in	12.25 in	3.25 in
86948	100 lb (50 kg)	12 × 12 in	12.25 in	3.25 in

Note: 1 in=25.4 mm



CW-90B

Light-capacity Bench Scale



Specifications

Load Cell, NTEP Certified:

IP67 aluminum and environmentally sealed

Output Impedance:

350 Ω

Maximum Overload:

180 to 200% depending on capacity

Overload Protection:

Five-point, independently adjusted

Scale Frame:

AISI304L, straight line finish, Ra=45 +/- 10

Scale Cover:

AISI304L, straight line finish, Ra=45 +/- 10

Cable Length:

34 in or 10 ft

Compensated Temperature Range:

14° F to 104° F (-10° C to 40° C)

Approvals:

NTEP CC 95-072, Class III 5,000 d

Measurement Canada AM-5082, Class III 5,000 d

Load cell is cFMus Approved

NSF Approved

Warranty:

Two-year limited warranty

Standard Features

- 304 stainless steel construction
- Meets HACCP requirements
- Five-point overload protection
- Specially designed adjustable support feet provide exceptional traction and will not scratch surfaces
- IP67 aluminum environmentally sealed load cell

APPROVALS

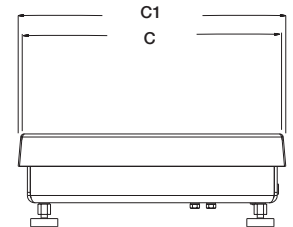
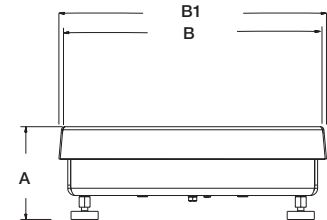


Part Number/Price

Part #		Platform Capacity	Dimensions	Est. Weight	Price
	10 ft cable				
112599	106137	5 lb (2.5 kg)	10 x 10 x 4.25 in	14 lb	\$660.00
112601	106138	10 lb (5 kg)	10 x 10 x 4.25 in	14 lb	\$660.00
112603	106139	25 lb (10 kg)	10 x 10 x 4.25 in	14 lb	\$660.00
112605	106140	25 lb (10 kg)	12 x 12 x 4.25 in	17 lb	\$750.00
112607	106141	50 lb (25 kg)	12 x 12 x 4.25 in	17 lb	\$750.00
112609	106142	100 lb (50 kg)	12 x 12 x 4.25 in	17 lb	\$750.00
	34 in cable				

Options/Accessories

Part #	Description	Catalog Page #
Consult	Scale Columns	See page 226
Consult	Ball Transfer and Roller Conveyor Scale Tops	See page 225
Consult	Mobile Scale Carts	See page 221 to page 224



Drawing Dimensions

10 in x 10 in			
A	4.25 in (107.95 mm)	C	10 in (254 mm)
B	10 in (254 mm)	C1	10.25 in (260.35 mm)
B1	10.25 in (260.35 mm)		
12 in x 12 in			
A	4.25 in (107.95 mm)	C	12.0 in (304.8 mm)
B	12.0 in (304.8 mm)	C1	12.25 (311.15 mm)
B1	12.25 (311.15 mm)		

CW-90XB

Light-capacity Bench Scale

Specifications

Load Cell, NTEP Certified:

IP69K stainless steel and hermetically sealed

Output Impedance:

350 ohm

Maximum Overload:

180% to 200% depending on capacity

Overload Protection:

Five-point, independently adjusted

Scale Frame:

AISI304L, straight line finish, Ra=45 +/- 10

Scale Cover:

AISI304L, straight line finish, Ra=45 +/- 10

Cable Length:

34 in or 10 ft

Compensated Temperature Range:

14° F to 104° F (-10° C to 40° C)

Approvals:

NTEP CC 95-072, Class III 5,000 d
Measurement Canada AM-5082, Class III 5,000 d
Load cell is cFMus Approved
NSF Approved

Warranty:

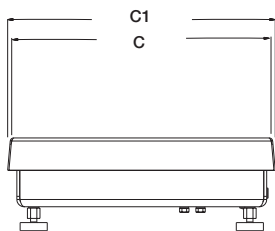
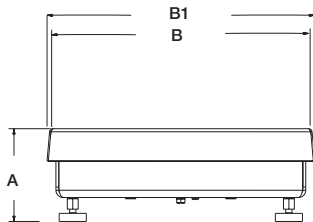
Three-year limited warranty (includes water ingress)



Standard Features

- 304 stainless steel construction
- Meets HACCP requirements
- Five-point overload protection
- Specially designed adjustable support feet provide exceptional traction and will not scratch surfaces
- IP69K, stainless steel hermetically sealed load cell

APPROVALS



Drawing Dimensions

10 in x 10 in			
A	4.25 in (107.95 mm)	C	10 in (254 mm)
B	10 in (254 mm)	C1	10.25 in (260.35 mm)
B1	10.25 in (260.35 mm)		
12 in x 12 in			
A	4.25 in (107.95 mm)	C	12.0 in (304.8 mm)
B	12.0 in (304.8 mm)	C1	12.25 in (311.15 mm)
B1	12.25 in (311.15 mm)		

Part Number/Price

Part #	Platform Capacity	Dimensions	Est. Weight	Price	
112600	106143	5 lb (2.5 kg)	10 × 10 × 4.25 in	14 lb	\$1,222.00
112602	106144	10 lb (5 kg)	10 × 10 × 4.25 in	14 lb	\$1,222.00
112604	106145	25 lb (10 kg)	10 × 10 × 4.25 in	14 lb	\$1,222.00
112606	106146	25 lb (10 kg)	12 × 12 × 4.25 in	17 lb	\$1,312.00
112608	106147	50 lb (25 kg)	12 × 12 × 4.25 in	17 lb	\$1,312.00
112610	106148	100 lb (50 kg)	12 × 12 × 4.25 in	17 lb	\$1,312.00

Options/Accessories

Part #	Description	Catalog Page #
Consult	Scale Columns	See page 226
Consult	Ball Transfer and Roller Conveyor Scale Tops	See page 225
Consult	Mobile Scale Carts	See page 221 to page 224

NEW Ready-n-Weigh Bench Scale System

CW-90B Bench Scale and 380 Indicator Package

Scale and Indicator Package



Standard Features

- Package includes scale with IP67 aluminum environmentally sealed load cell with an indicator and 12-inch column
- Factory calibrated, with indicator setup and configured for 5,000 divisions
- Scale includes rubber feet to provide exceptional traction and avoid scratching surfaces along with removable top cover for ease of cleaning
- Standard RS-232 serial port for connecting to a variety of peripherals
- Powered by 4 alkaline C-cell batteries (not included) or external AC adaptor (not included)

APPROVALS



CW-90B Specifications

Load Cell, NTEP Certified:

IP67 aluminum, environmentally sealed

Scale Construction:

304 stainless steel

Maximum Overload:

180% to 200% depending on capacity

Overload Protection:

Five-point, independently adjusted

Scale Frame:

AISI304L, straight line finish, Ra = 45 +/- 10

Scale Cover:

AISI304L, straight line finish, Ra = 45 +/- 10

Cable Length:

34 in

Compensated Temperature Range:

14° F to 104° F (-10° C to 40° C)

Approvals:

NTEP CC 95-072, Class III 5,000 d

Measurement Canada AM-5082, Class III 5,000 d

Load cell is cFMus Approved

Warranty:

Two-year limited warranty

380 Specifications:

Power:

Batteries: 4 Alkaline C-cell

Optional: 115/230 VAC to 12 VDC adaptor

Battery Life:

100 hours on Alkaline batteries with one 350 ohm load cell, no backlight

Communication Ports:

One RS-232 (three-wire)

One USB 2.0

Display:

Six 1 in (25 mm) tall, LCD digits

Status Annunciators:

g, lb, t, tn, kg, oz, battery level, PT, LT, gross, zero, unstable, net

Keys/Buttons:

5 tactile buttons

Rating/Material:

Enclosure: IP66, 304 Stainless steel

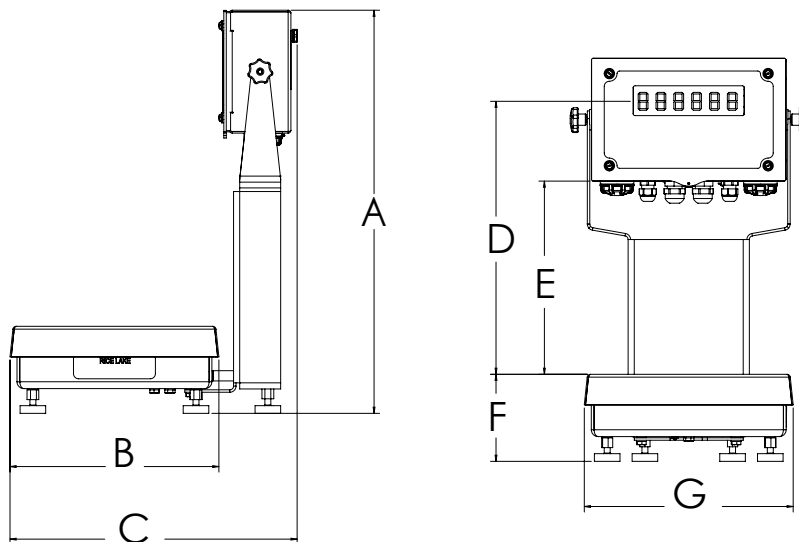
Approvals:

NTEP CC 12-123

Measurement Canada AM-5892

CE Marked

UL/cUL Listed



CW-90B with 380 indicator

Drawing Dimensions

10 in x 10 in			
A	19.68 in (500 mm)	E	9.43 in (239.6 mm)
B	10.20 in (259.1 mm)	F	4.25 in (108 mm)
C	14.02 in (356.1 mm)	G	10.20 in (259.1 mm)
D	13.36 in (339.3 mm)		
12 in x 12 in			
A	19.56 in (496.9 mm)	E	9.30 in (236.3 mm)
B	12.38 in (313.8 mm)	F	4.25 in (108 mm)
C	16.10 in (408.9 mm)	G	12.35 in (313.8 mm)
D	13.23 in (336.1 mm)		

Ready-n-Weigh Bench Scale System

NEW

CW-90B Bench Scale and 380 Indicator Package

CW-90B with 380 Package

Part #	Capacity	Dimensions	Est. Weight	Price
208528	5 lb (2.5 kg)	10 x 10 x 4.25 in	24lb	\$1,370.00
208529	10 lb (5 kg)	10 x 10 x 4.25 in	24lb	\$1,370.00
208530	25 lb (10 kg)	10 x 10 x 4.25 in	24lb	\$1,370.00
208531	25 lb (10 kg)	12 x 12 x 4.25 in	27lb	\$1,460.00
208532	50 lb (25 kg)	12 x 12 x 4.25 in	27lb	\$1,460.00
208533	100 lb (50 kg)	12 x 12 x 4.25 in	27lb	\$1,460.00



* US plug (NA) - Type B



** Euro Plug - Type E

Options/Accessories

Part #	Description	Price
206433	External AC Adaptor	\$52.00
204258	Real-time clock module	\$112.00

Ready-n-Weigh Bench Scale System

CW-90B Bench Scale and 480/480 Plus Indicator Package



Standard Features

- Package includes scale with IP67 aluminum environmentally sealed load cell with an indicator and 12-inch column
- Factory calibrated, with indicator setup and configured for 5,000 divisions
- Scale includes rubber feet to provide exceptional traction and avoid scratching surfaces along with removable top cover for ease of cleaning
- AC Power 100-240 VAC
- Numeric keypad (480 Plus)
- Battery backed time and date
- Standard RS-232 serial ports for connecting to a variety of peripherals
- Ethernet TCP/IP, sold as an option

APPROVALS



CW-90B Specifications

Load Cell, NTEP Certified:

IP67 aluminum, environmentally sealed

Scale Construction:

304 stainless steel

Maximum Overload:

180% to 200% depending on capacity

Overload Protection:

Five-point, independently adjusted

Scale Frame:

AISI304L, straight line finish, Ra = 45 +/- 10

Scale Cover:

AISI304L, straight line finish, Ra = 45 +/- 10

Cable Length:

34 in

Compensated Temperature Range:

14° F to 104° F (-10° C to 40° C)

Approvals:

NTEP CC 95-072, Class III 5,000 d

Measurement Canada AM-5082, Class III 5,000 d

Load cell is cFMus Approved

Warranty:

Two-year limited warranty

480/480 Plus Specifications:

Communication Ports:

Com 1: RS-232 full duplex

Com 2: RS-232 full duplex or 20 mA simplex, continuous

Both ports 1200, 2400, 4800, 9600, 19200, 38400 baud seven or eight data bits, even, odd or no parity

Optional Ethernet and USB Board:

USB five-pin header for PC, printer or flash drive. Ethernet TCP/IP, RJ45 jack, server and client ports.

Display:

LED display 0.8 in (20 mm), six-digit, seven-segment

Status Annunciators:

Gross, net, center of zero, standstill, lb, kg, tare, preset tare

Keys/Buttons:

Flat membrane panel, embossed keys, tactile feel

Rating/Material:

Enclosure: NEMA Type 4X/IP66, heavy-gauge stainless steel

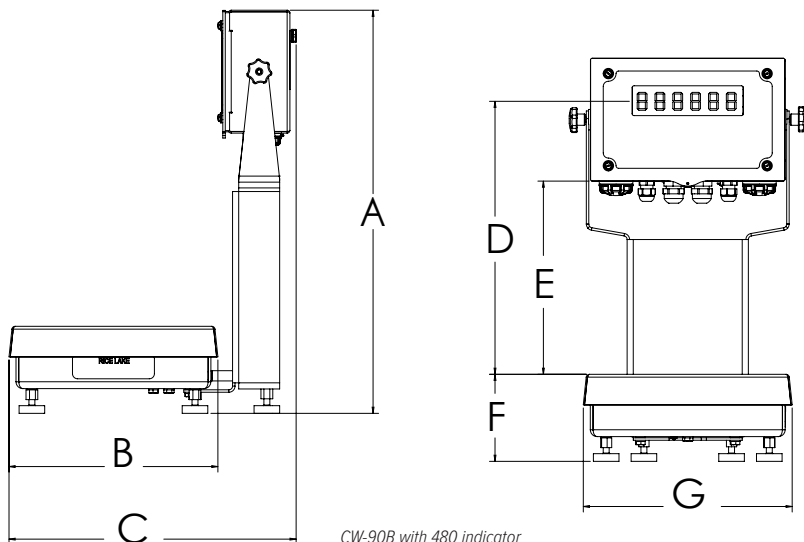
Approvals:

NTEP CC 12-123

Measurement Canada AM-5892

CE Marked

UL/CUL Listed



CW-90B with 480 indicator

Drawing Dimensions

10 in x 10 in			
A	19.50 in (495.3 mm)	E	9.25 in (235 mm)
B	10.25 in (260.4 mm)	F	4.25 in (108 mm)
C	14.53 in (369.1 mm)	G	10.25 in (260.35 mm)
D	13.25 in (336.6 mm)		
12 in x 12 in			
A	19.50 in (495.3 mm)	E	9.25 in (235 mm)
B	12.25 in (311.2 mm)	F	4.25 in (108 mm)
C	16.53 in (420 mm)	G	12.25 in (311.2 mm)
D	13.25 in (336.6 mm)		

Ready-n-Weigh Bench Scale System

CW-90B Bench Scale and 480/480 Plus Indicator Package

CW-90B with 480 Package

Part #	Platform Capacity	Dimensions	Est. Weight	Price
115 VAC, LED, US Plug-Type B				
201157	5 lb (2.5 kg)	10 x 10 x 4.25 in	24 lb	\$1,480.00
201158	10 lb (5 kg)	10 x 10 x 4.25 in	24 lb	\$1,480.00
201159	25 lb (10 kg)	10 x 10 x 4.25 in	24 lb	\$1,480.00
201160	25 lb (10 kg)	12 x 12 x 4.25 in	27 lb	\$1,570.00
201161	50 lb (25 kg)	12 x 12 x 4.25 in	27 lb	\$1,570.00
201162	100 lb (50 kg)	12 x 12 x 4.25 in	27 lb	\$1,570.00
90-264 VAC, LED, Euro Plug-Type E				
201169	5 lb (2.5 kg)	10 x 10 x 4.25 in	24 lb	\$1,480.00
201170	10 lb (5 kg)	10 x 10 x 4.25 in	24 lb	\$1,480.00
201171	25 lb (10 kg)	10 x 10 x 4.25 in	24 lb	\$1,480.00
201172	25 lb (10 kg)	12 x 12 x 4.25 in	27 lb	\$1,570.00
201173	50 lb (25 kg)	12 x 12 x 4.25 in	27 lb	\$1,570.00
201174	100 lb (50 kg)	12 x 12 x 4.25 in	27 lb	\$1,570.00

CW-90B with 480 Plus Package

Part #	Platform Capacity	Dimensions	Est. Weight	Price
115 VAC, LED, Numeric keypad, US Plug-Type B				
201163	5 lb (2.5 kg)	10 x 10 x 4.25 in	24 lb	\$1,480.00
201164	10 lb (5 kg)	10 x 10 x 4.25 in	24 lb	\$1,480.00
201165	25 lb (10 kg)	10 x 10 x 4.25 in	24 lb	\$1,480.00
201166	25 lb (10 kg)	12 x 12 x 4.25 in	27 lb	\$1,570.00
201167	50 lb (25 kg)	12 x 12 x 4.25 in	27 lb	\$1,570.00
201168	100 lb (50 kg)	12 x 12 x 4.25 in	27 lb	\$1,570.00
90-264 VAC, LED, Numeric keypad, Euro Plug-Type E				
201175	5 lb (2.5 kg)	10 x 10 x 4.25 in	24 lb	\$1,480.00
201176	10 lb (5 kg)	10 x 10 x 4.25 in	24 lb	\$1,480.00
201177	25 lb (10 kg)	10 x 10 x 4.25 in	24 lb	\$1,480.00
201178	25 lb (10 kg)	12 x 12 x 4.25 in	27 lb	\$1,570.00
201179	50 lb (25 kg)	12 x 12 x 4.25 in	27 lb	\$1,570.00
201180	100 lb (50 kg)	12 x 12 x 4.25 in	27 lb	\$1,570.00



* US plug (NA) - Type B



** Euro Plug - Type E

Options/Accessories

Part #	Description	Price
131340	Bracket, mounting assembly	\$29.00
164600	USB and Ethernet TCP/IP kit	\$585.00

Ready-n-Weigh Bench Scale System

CW-90B Bench Scale and 482/482 Plus Indicator Package



CW-90B Specifications

- Load Cell, NTEP Certified:**
IP67 aluminum, environmentally sealed
- Scale Construction:**
304 stainless steel
- Maximum Overload:**
180% to 200% depending on capacity
- Overload Protection:**
Five-point, independently adjusted
- Scale Frame:**
AISI304L, straight line finish, Ra = 45 +/- 10
- Scale Cover:**
AISI304L, straight line finish, Ra = 45 +/- 10
- Cable Length:**
34 in
- Compensated Temperature Range:**
14° F to 104° F (-10° C to 40° C)
- Approvals:**
NTEP CC 95-072, Class III 5,000 d
Measurement Canada AM-5082, Class III 5,000 d
Load cell is cFMus Approved
- Warranty:**
Two-year limited warranty

Standard Features

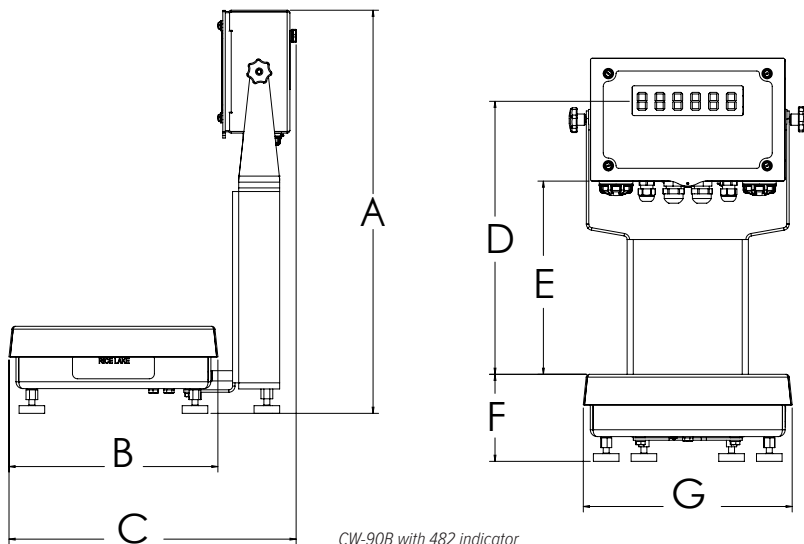
- Package includes scale with IP67 aluminum environmentally sealed load cell with an indicator and 12-inch column
- Factory calibrated, with indicator setup and configured for 5,000 divisions
- Scale includes rubber feet to provide exceptional traction and avoid scratching surfaces along with removable top cover for ease of cleaning
- AC Power 100-240 VAC
- LCD backlit indicator display for a variety of environments
- Battery backed time and date
- Standard RS-232 serial ports for connecting to peripherals
- Ethernet TCP/IP, sold as an option
- Portable applications require internal battery package, sold as an option

APPROVALS



482/482 Plus Specifications

- Communication Ports:**
Com 1: RS-232 full duplex
Com 2: RS-232 full duplex or 20 mA simplex, continuous
Both ports 1200, 2400, 4800, 9600, 19200, 38400 baud seven or eight data bits, even, odd or no parity
- Optional Ethernet and USB Board:**
USB five-pin header for PC, printer or flash drive.
Ethernet TCP/IP, RJ45 jack, server and client ports.
- Display:**
LCD backlit display, Transmissive/Transflective
0.8 in (20 mm), six-digit, seven-segment
- Status Annunciators:**
Gross, net, center of zero, standstill, lb, kg, tare, preset tare
- Keys/Buttons:**
Flat membrane panel, embossed keys, tactile feel
- Rating/Material:**
Enclosure: NEMA Type 4X/IP66, heavy-gauge stainless steel
- Approvals:**
NTEP CC 12-123
Measurement Canada AM-5892
CE Marked
UL/cUL Listed



CW-90B with 482 indicator

Drawing Dimensions

482/482 Plus

10 in x 10 in

A	19.50 in (495.3 mm)	E	9.25 in (235 mm)
B	10.25 in (260.4 mm)	F	4.25 in (108 mm)
C	14.53 in (369.1 mm)	G	10.25 in (260.35 mm)
D	13.25 in (336.6 mm)		

12 in x 12 in

A	19.50 in (495.3 mm)	E	9.25 in (235 mm)
B	12.25 in (311.2 mm)	F	4.25 in (108 mm)
C	16.53 in (420 mm)	G	12.25 in (311.2 mm)
D	13.25 in (336.6 mm)		

Ready-n-Weigh Bench Scale System

CW-90B Bench Scale and 482/482 Plus Indicator Package

CW-90B with 482 Package

Part #	Platform Capacity	Dimensions	Est. Weight	Price
115 VAC, LCD, US Plug-Type B				
201463	5 lb (2.5 kg)	10 x 10 x 4.25 in	24 lb	\$1,610.00
201464	10 lb (5 kg)	10 x 10 x 4.25 in	24 lb	\$1,610.00
201465	25 lb (10 kg)	10 x 10 x 4.25 in	24 lb	\$1,610.00
201466	25 lb (10 kg)	12 x 12 x 4.25 in	27 lb	\$1,700.00
201467	50 lb (25 kg)	12 x 12 x 4.25 in	27 lb	\$1,700.00
201468	100 lb (50 kg)	12 x 12 x 4.25 in	27 lb	\$1,700.00
90-264 VAC, LCD, Euro Plug-Type E				
201480	5 lb (2.5 kg)	10 x 10 x 4.25 in	24 lb	\$1,610.00
201485	10 lb (5 kg)	10 x 10 x 4.25 in	24 lb	\$1,610.00
201486	25 lb (10 kg)	10 x 10 x 4.25 in	24 lb	\$1,610.00
201487	25 lb (10 kg)	12 x 12 x 4.25 in	27 lb	\$1,700.00
201488	50 lb (25 kg)	12 x 12 x 4.25 in	27 lb	\$1,700.00
201489	100 lb (50 kg)	12 x 12 x 4.25 in	27 lb	\$1,700.00

CW-90B with 482 Plus Package

Part #	Platform Capacity	Dimensions	Est. Weight	Price
115 VAC, LCD, Numeric keypad, US Plug-Type B				
201469	5 lb (2.5 kg)	10 x 10 x 4.25 in	24 lb	\$1,610.00
201475	10 lb (5 kg)	10 x 10 x 4.25 in	24 lb	\$1,610.00
201476	25 lb (10 kg)	10 x 10 x 4.25 in	24 lb	\$1,610.00
201477	25 lb (10 kg)	12 x 12 x 4.25 in	27 lb	\$1,700.00
201478	50 lb (25 kg)	12 x 12 x 4.25 in	27 lb	\$1,700.00
201479	100 lb (50 kg)	12 x 12 x 4.25 in	27 lb	\$1,700.00
90-264 VAC, LCD, Numeric keypad, Euro Plug-Type E				
201490	5 lb (2.5 kg)	10 x 10 x 4.25 in	24 lb	\$1,610.00
201491	10 lb (5 kg)	10 x 10 x 4.25 in	24 lb	\$1,610.00
201492	25 lb (10 kg)	10 x 10 x 4.25 in	24 lb	\$1,610.00
201493	25 lb (10 kg)	12 x 12 x 4.25 in	27 lb	\$1,700.00
201494	50 lb (25 kg)	12 x 12 x 4.25 in	27 lb	\$1,700.00
201495	100 lb (50 kg)	12 x 12 x 4.25 in	27 lb	\$1,700.00

CW-90B with 482 Internal Battery Package

Part #	Platform Capacity	Dimensions	Est. Weight	Price
115 VAC, LCD, US Plug-Type B				
201496	5 lb (2.5 kg)	10 x 10 x 4.25 in	24 lb	\$1,860.00
201497	10 lb (5 kg)	10 x 10 x 4.25 in	24 lb	\$1,860.00
201498	25 lb (10 kg)	10 x 10 x 4.25 in	24 lb	\$1,860.00
201499	25 lb (10 kg)	12 x 12 x 4.25 in	27 lb	\$1,950.00
201500	50 lb (25 kg)	12 x 12 x 4.25 in	27 lb	\$1,950.00
201501	100 lb (50 kg)	12 x 12 x 4.25 in	27 lb	\$1,950.00
90-264 VAC, LCD, Euro Plug-type E				
201508	5 lb (2.5 kg)	10 x 10 x 4.25 in	24 lb	\$1,860.00
201509	10 lb (5 kg)	10 x 10 x 4.25 in	24 lb	\$1,860.00
201510	25 lb (10 kg)	10 x 10 x 4.25 in	24 lb	\$1,860.00
201511	25 lb (10 kg)	12 x 12 x 4.25 in	27 lb	\$1,950.00
201512	50 lb (25 kg)	12 x 12 x 4.25 in	27 lb	\$1,950.00
201513	100 lb (50 kg)	12 x 12 x 4.25 in	27 lb	\$1,950.00

Ready-n-Weigh Bench Scale System

CW-90B Bench Scale and 482/482 Plus Indicator Package

CW-90B with 482 Plus Internal Battery Package

Part #	Platform Capacity	Dimensions	Est. Weight	Price
115 VAC, LCD, Numeric, US Plug-Type B				
201502	5 lb (2.5 kg)	10 x 10 x 4.25 in	24 lb	\$1,860.00
201503	10 lb (5 kg)	10 x 10 x 4.25 in	24 lb	\$1,860.00
201504	25 lb (10 kg)	10 x 10 x 4.25 in	24 lb	\$1,860.00
201505	25 lb (10 kg)	12 x 12 x 4.25 in	27 lb	\$1,950.00
201506	50 lb (25 kg)	12 x 12 x 4.25 in	27 lb	\$1,950.00
201507	100 lb (50 kg)	12 x 12 x 4.25 in	27 lb	\$1,950.00
90-264 VAC, LCD, Numeric, Euro Plug-type E				
201514	5 lb (2.5 kg)	10 x 10 x 4.25 in	24 lb	\$1,860.00
201515	10 lb (5 kg)	10 x 10 x 4.25 in	24 lb	\$1,860.00
201516	25 lb (10 kg)	10 x 10 x 4.25 in	24 lb	\$1,860.00
201517	25 lb (10 kg)	12 x 12 x 4.25 in	27 lb	\$1,950.00
201518	50 lb (25 kg)	12 x 12 x 4.25 in	27 lb	\$1,950.00
201519	100 lb (50 kg)	12 x 12 x 4.25 in	27 lb	\$1,950.00



* US plug (NA) - Type B



** Euro Plug - Type E

Options/Accessories

Part #	Description	Price
131340	Bracket, mounting assembly	\$29.00
164600	USB and Ethernet TCP/IP kit	\$585.00

Ready-n-Weigh Bench Scale System

CW-90B Bench Scale and 680 Indicator Package

CW-90B Specifications

Load Cell, NTEP Certified:

IP67 aluminum, environmentally sealed

Scale Construction:

304 stainless steel

Maximum Overload:

180% to 200% depending on capacity

Overload Protection:

Five-point, independently adjusted

Scale Frame:

AISI304L, straight line finish, Ra = 45 +/- 10

Scale Cover:

AISI304L, straight line finish, Ra = 45 +/- 10

Cable Length:

34 in

Compensated Temperature Range:

14° F to 104° F (-10° C to 40° C)

Approvals:

NTEP CC 95-072, Class III 5,000 d

Measurement Canada AM-5082, Class III 5,000 d

Load cell is cFMus Approved

Warranty:

Two-year limited warranty

Scale
and
Indicator
Package



680 Specifications

Communication Ports:

Two RS-232 (three-wire)

RS-485/422 (two-wire or four-wire)

Micro USB (device)

Ethernet TCP/IP (10/100)

Display:

Seven 0.8 in tall, seven-segment digits

Status Annunciators:

Eight LED annunciators

Keys/Buttons:

Flat membrane panel, tactile feel

(18 buttons plus ON/OFF)

Rating/Material:

Rating: IP69K (IP66 with RJ45)

Material: AISI 304 Stainless Steel

Approvals:

NTEP CC 12-123

Measurement Canada AM-5892

UL/cUL Listed

CE Marked

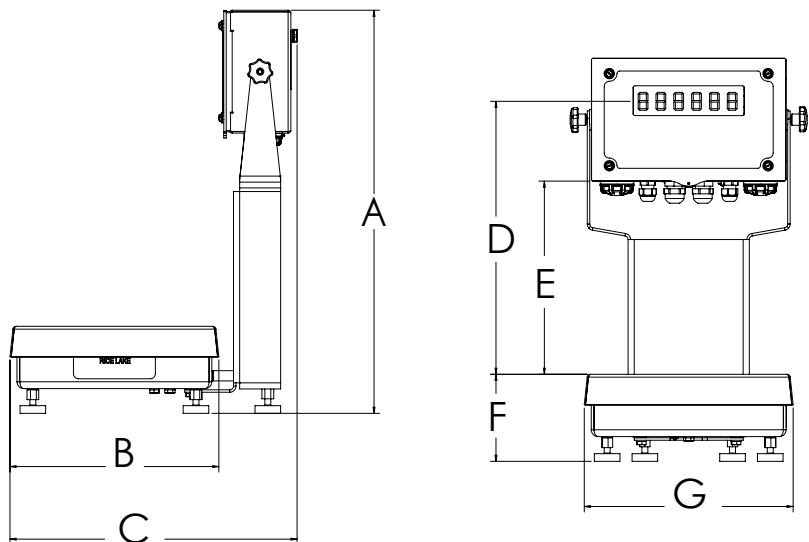
Standard Features

- Package includes scale with IP67 aluminum environmentally sealed load cell with an indicator and 12-inch column
- Factory calibrated, with indicator setup and configured for 5,000 divisions
- Scale includes rubber feet to provide exceptional traction and avoid scratching surfaces along with removable top cover for ease of cleaning
- AC Power 100-240 VAC
- LCD backlit indicator display for a variety of environments
- Battery backed time and date
- Standard RS-232 serial ports for connecting to a variety of peripherals
- Ethernet TCP/IP comes standard

APPROVALS



Drawing Dimensions			
10 in x 10 in			
A	19.56 in (496.8 mm)	E	9.31 in (236.5 mm)
B	10.25 in (260.4 mm)	F	4.25 in (108 mm)
C	15.83 in (402.1 mm)	G	10.25 in (260.35 mm)
D	13.31 in (338.1 mm)		
12 in x 12 in			
A	19.56 in (496.8 mm)	E	9.31 in (236.5 mm)
B	12.25 in (311.2 mm)	F	4.25 in (108 mm)
C	16.83 in (427.5 mm)	G	12.25 in (311.2 mm)
D	13.31 in (338.1 mm)		



CW-90B with 680 indicator

Ready-n-Weigh Bench Scale System

CW-90B Bench Scale and 680 Indicator Package

CW-90B with 680 Package

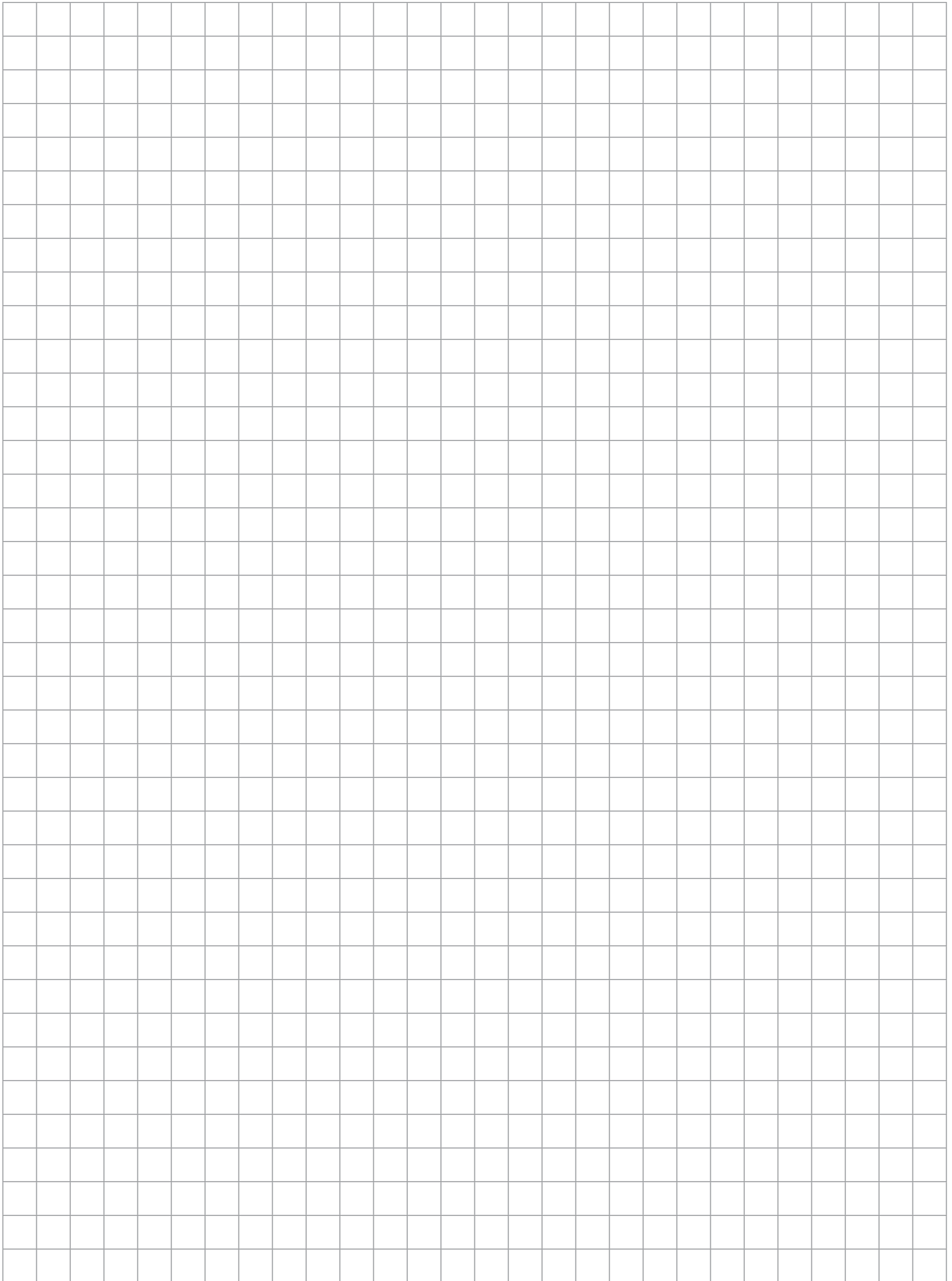
Part #	Platform Capacity	Dimensions	Est. Weight	Price
115-230 VAC, LED, Numeric, US Plug-Type B				
201308	5 lb (2.5 kg)	10 x 10 x 4.25 in	24 lb	\$1,680.00
201309	10 lb (5 kg)	10 x 10 x 4.25 in	24 lb	\$1,680.00
201310	25 lb (10 kg)	10 x 10 x 4.25 in	24 lb	\$1,680.00
201311	25 lb (10 kg)	12 x 12 x 4.25 in	27 lb	\$1,770.00
201312	50 lb (25 kg)	12 x 12 x 4.25 in	27 lb	\$1,770.00
201313	100 lb (50 kg)	12 x 12 x 4.25 in	27 lb	\$1,770.00
115-230 VAC, LED, Numeric, Euro Plug-Type E				
201314	5 lb (2.5 kg)	10 x 10 x 4.25 in	24 lb	\$1,680.00
201315	10 lb (5 kg)	10 x 10 x 4.25 in	24 lb	\$1,680.00
201319	25 lb (10 kg)	10 x 10 x 4.25 in	24 lb	\$1,680.00
201320	25 lb (10 kg)	12 x 12 x 4.25 in	27 lb	\$1,770.00
201321	50 lb (25 kg)	12 x 12 x 4.25 in	27 lb	\$1,770.00
201322	100 lb (50 kg)	12 x 12 x 4.25 in	27 lb	\$1,770.00



† US plug (NA) - Type B



** Euro Plug - Type E



NEW Ready-n-Weigh Bench Scale System

CW-90XB Bench Scale and 380 Indicator Package

Scale and Indicator Package



CW-90XB Specifications

- Load Cell, NTEP Certified:**
IP69K stainless steel and hermetically sealed
- Scale Construction:**
304 stainless steel
- Maximum Overload:**
180% to 200% depending on capacity
- Overload Protection:**
Five-point, independently adjusted
- Scale Frame:**
AISI304L, straight line finish, Ra = 45 +/- 10
- Scale Cover:**
AISI304L, straight line finish, Ra = 45 +/- 10
- Cable Length:**
34 in
- Compensated Temperature Range:**
14° F to 104° F (-10° C to 40° C)
- Approvals:**
NTEP CC 95-072, Class III 5,000 d
Measurement Canada AM-5082, Class III 5,000 d
Load cell is FM approved
- Scale Warranty:**
Three-year limited warranty (includes water ingress)

Standard Features

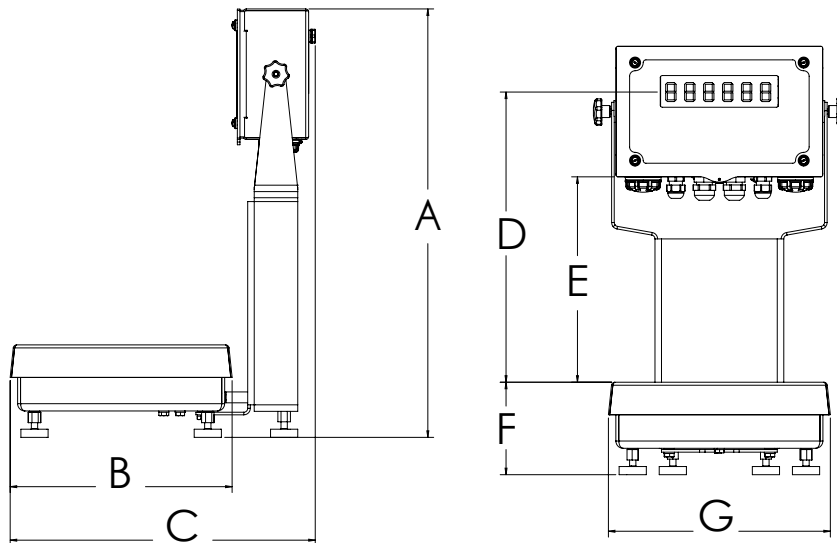
- Package includes scale with IP69K stainless steel hermetically sealed load cell with an indicator and 12-inch column
- Factory calibrated, with indicator setup and configured for 5,000 divisions
- Scale includes rubber feet to provide exceptional traction and avoid scratching surfaces along with removable top cover for ease of cleaning
- Powered by 4 alkaline C-cell batteries (not included) or external AC adaptor (not included)
- Standard RS-232 serial port for connecting to peripherals

APPROVALS



380 Specifications:

- Power:**
Batteries: 4 Alkaline C-cell
Optional: 115/230VAC to 12VDC adapter
- Battery Life:**
100 hours on Alkaline batteries with one 350 ohm load cell, no backlight
- Communication Ports:**
One RS-232 (three-wire)
One USB 2.0
- Display:**
Six 1 in (25 mm) tall, LCD digits
- Status Annunciators:**
g, lb, t, tn, kg, oz, battery level, PT, LT, gross, zero, unstable, net
- Keys/Buttons:**
5 tactile buttons
- Rating/Material:**
Enclosure: IP66, 304 Stainless steel
- Approvals:**
NTEP CC 12-123
Measurement Canada AM-5892
CE Marked
UL/cUL Listed



CW-90XB with 380 indicator

Drawing Dimensions			
10 in x 10 in			
A	19.69 in (500.1 mm)	E	9.44 in (239.7 mm)
B	10.20 in (259.1 mm)	F	4.25 in (108 mm)
C	14.02 in (356.1 mm)	G	10.20 in (259.1 mm)
D	13.36 in (339.3 mm)		
12 in x 12 in			
A	19.56 in (496.8 mm)	E	9.31 in (236.4 mm)
B	12.29 in (312.2 mm)	F	4.25 in (108 mm)
C	16.07 in (408.1 mm)	G	12.29 in (312.2 mm)
D	13.23 in (336.2 mm)		

Ready-n-Weigh Bench Scale System

NEW

CW-90XB Bench Scale and Indicator Package

CW-90XB with 380 Package

Part #	Capacity	Dimensions	Est. Weight	Price
208543	5 lb (2.5 kg)	10 x 10 x 4.25 in	24 lb	\$1,932.00
208544	10 lb (5 kg)	10 x 10 x 4.25 in	24 lb	\$1,932.00
208545	25 lb (10 kg)	10 x 10 x 4.25 in	24 lb	\$1,932.00
208546	25 lb (10 kg)	12 x 12 x 4.25 in	27 lb	\$2,022.00
208547	50 lb (25 kg)	12 x 12 x 4.25 in	27 lb	\$2,022.00
208548	100 lb (50 kg)	12 x 12 x 4.25 in	27 lb	\$2,022.00



* US plug (NA) - Type B



** Euro Plug - Type E

Options/Accessories

Part #	Description	Price
206433	External AC Adaptor	\$52.00
204258	Real-time clock module	\$112.00

Ready-n-Weigh Bench Scale System

CW-90XB Bench Scale and 480/480 Plus Indicator Package



Standard Features

- Package includes scale with IP69K stainless steel hermetically sealed load cell with an indicator and 12-inch column
- Factory calibrated, with indicator setup and configured for 5,000 divisions
- Scale includes rubber feet to provide exceptional traction and avoid scratching surfaces along with removable top cover for ease of cleaning
- AC Power 100-240 VAC
- Numeric keypad (480 Plus)
- Battery backed time and date
- Standard RS-232 serial ports for connecting to a variety of peripherals
- Ethernet TCP/IP is sold as an option

APPROVALS



CW-90XB Specifications

Load Cell, NTEP Certified:

IP69K stainless steel and hermetically sealed

Scale Construction:

304 stainless steel

Maximum Overload:

180 to 200% depending on capacity

Overload Protection:

Five-point, independently adjusted

Scale Frame:

AISI304L, straight line finish, Ra = 45 +/- 10

Scale Cover:

AISI304L, straight line finish, Ra = 45 +/- 10

Cable Length:

34 in

Compensated Temperature Range:

14° F to 104° F (-10° C to 40° C)

Approvals:

NTEP CC 95-072, Class III 5,000 d

Measurement Canada AM-5082, Class III 5,000 d

Load cell is FM approved

Scale Warranty:

Three-year limited warranty (includes water ingress)

Indicator Warranty:

Two-year limited warranty

480/480 Plus Specifications:

Communication Ports:

Com 1: RS-232 full duplex

Com 2: RS-232 full duplex or 20 mA simplex, continuous

Both ports 1200, 2400, 4800, 9600, 19200, 38400 baud seven or eight data bits, even, odd or no parity

Optional Ethernet and USB Board:

USB five-pin header for PC, printer or flash drive

Ethernet TCP/IP, RJ45 jack, server and client ports

Display:

LED display 0.8 in (20 mm), six-digit, seven-segment

Status Annunciators:

Gross, net, center of zero, standstill, lb, kg, tare, preset tare

Keys/Buttons:

Flat membrane panel, embossed keys, tactile feel

Rating/Material:

Enclosure: NEMA Type 4X/IP66, heavy-gauge stainless steel

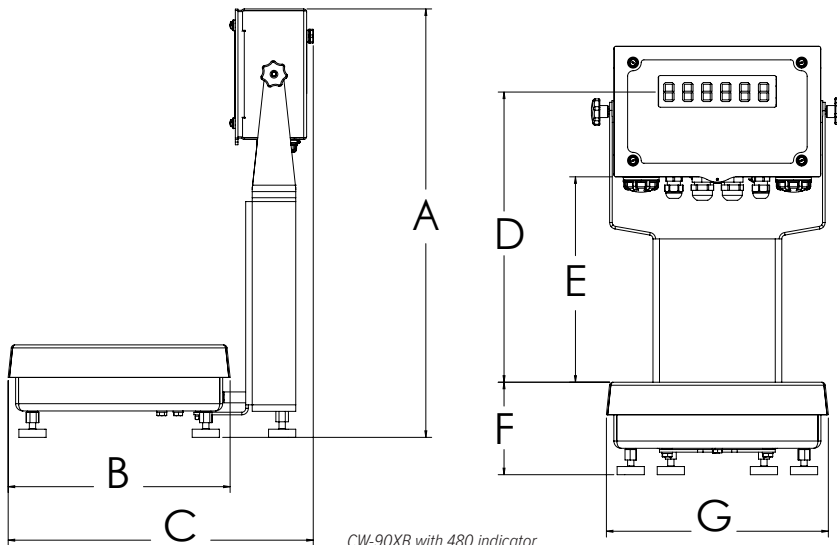
Approvals:

NTEP CC 12-123

Measurement Canada AM-5892

CE Marked

UL/cUL Listed



CW-90XB with 480 indicator

Drawing Dimensions			
10 in x 10 in			
A	19.50 in (495.3 mm)	E	9.25 in (235 mm)
B	10.25 in (260.4 mm)	F	4.25 in (108 mm)
C	14.53 in (369.1 mm)	G	10.25 in (260.35 mm)
D	13.25 in (336.6 mm)		
12 in x 12 in			
A	19.50 in (495.3 mm)	E	9.25 in (235 mm)
B	12.25 in (311.2 mm)	F	4.25 in (108 mm)
C	16.53 in (420 mm)	G	12.25 in (311.2 mm)
D	13.25 in (336.6 mm)		

Ready-n-Weigh Bench Scale System

CW-90XB Bench Scale and 480/480 Plus Indicator Package

CW-90XB with 480 Package

Part #	Platform Capacity	Dimensions	Est. Weight	Price
115 VAC, LED, US Plug-Type B				
201241	5 lb (2.5 kg)	10 x 10 x 4.25 in	24 lb	\$2,042.00
201242	10 lb (5 kg)	10 x 10 x 4.25 in	24 lb	\$2,042.00
201243	25 lb (10 kg)	10 x 10 x 4.25 in	24 lb	\$2,042.00
201244	25 lb (10 kg)	12 x 12 x 4.25 in	27 lb	\$2,132.00
201245	50 lb (25 kg)	12 x 12 x 4.25 in	27 lb	\$2,132.00
201246	100 lb (50 kg)	12 x 12 x 4.25 in	27 lb	\$2,132.00
90-264 VAC, LED, Euro Plug-Type E				
201254	5 lb (2.5 kg)	10 x 10 x 4.25 in	24 lb	\$2,042.00
201255	10 lb (5 kg)	10 x 10 x 4.25 in	24 lb	\$2,042.00
201257	25 lb (10 kg)	10 x 10 x 4.25 in	24 lb	\$2,042.00
201258	25 lb (10 kg)	12 x 12 x 4.25 in	27 lb	\$2,132.00
201259	50 lb (25 kg)	12 x 12 x 4.25 in	27 lb	\$2,132.00
201260	100 lb (50 kg)	12 x 12 x 4.25 in	27 lb	\$2,132.00

CW-90XB with 480 Plus Package

Part #	Platform Capacity	Dimensions	Est. Weight	Price
115 VAC, LED, Numeric, US Plug-Type B				
201247	5 lb (2.5 kg)	10 x 10 x 4.25 in	24 lb	\$2,042.00
201248	10 lb (5 kg)	10 x 10 x 4.25 in	24 lb	\$2,042.00
201249	25 lb (10 kg)	10 x 10 x 4.25 in	24 lb	\$2,042.00
201250	25 lb (10 kg)	12 x 12 x 4.25 in	27 lb	\$2,132.00
201251	50 lb (25 kg)	12 x 12 x 4.25 in	27 lb	\$2,132.00
201253	100 lb (50 kg)	12 x 12 x 4.25 in	27 lb	\$2,132.00
90-264 VAC, LED, Numeric, Euro Plug-Type E				
201261	5 lb (2.5 kg)	10 x 10 x 4.25 in	24 lb	\$2,042.00
201262	10 lb (5 kg)	10 x 10 x 4.25 in	24 lb	\$2,042.00
201263	25 lb (10 kg)	10 x 10 x 4.25 in	24 lb	\$2,042.00
201264	25 lb (10 kg)	12 x 12 x 4.25 in	27 lb	\$2,132.00
201265	50 lb (25 kg)	12 x 12 x 4.25 in	27 lb	\$2,132.00
201266	100 lb (50 kg)	12 x 12 x 4.25 in	27 lb	\$2,132.00



* US plug (NA) - Type B



** Euro Plug - Type E

Options/Accessories

Part #	Description	Price
131340	Bracket, mounting assembly	\$29.00
164600	USB and Ethernet TCP/IP kit	\$585.00

Ready-n-Weigh Bench Scale System

CW-90XB Bench Scale and 482/482 Plus Indicator Package



Standard Features

- Package includes scale with IP69K stainless steel hermetically sealed load cell with an indicator and 12-inch column
- Factory calibrated, with indicator setup and configured for 5,000 divisions
- Scale includes rubber feet to provide exceptional traction and avoid scratching surfaces along with removable top cover for ease of cleaning
- AC Power 100-240 VAC
- Internal rechargeable battery power ideal for portable applications
- LCD backlit indicator display for a variety of environments
- Battery backed time and date
- Standard RS-232 serial ports for connecting to peripherals
- Ethernet TCP/IP, sold as an option

APPROVALS



CW-90XB Specifications

Load Cell, NTEP Certified:

IP69K stainless steel and hermetically sealed

Scale Construction:

304 stainless steel

Maximum Overload:

180% to 200% depending on capacity

Overload Protection:

Five-point, independently adjusted

Scale Frame:

AISI304L, straight line finish, Ra = 45 +/- 10

Scale Cover:

AISI304L, straight line finish, Ra = 45 +/- 10

Cable Length:

34 in

Compensated Temperature Range:

14° F to 104° F (-10° C to 40° C)

Approvals:

NTEP CC 95-072, Class III 5,000 d

Measurement Canada AM-5082, Class III 5,000 d

Load cell is FM approved

Scale Warranty:

Three-year limited warranty (includes water ingress)

Indicator Warranty:

Two-year limited warranty

482/482 Plus Specifications

Communication Ports:

Com 1: RS-232 full duplex

Com 2: RS-232 full duplex or 20 mA simplex, continuous

Both ports 1200, 2400, 4800, 9600, 19200, 38400 baud seven or eight data bits, even, odd or no parity

Optional Ethernet and USB Board:

USB five-pin header for PC, printer or flash drive

Ethernet TCP/IP, RJ45 jack, server and client ports

Display:

LCD backlit display, Transmissive/Transflective
0.8 in (20 mm), six-digit, seven-segment

Status Annunciators:

Gross, net, center of zero, standstill, lb, kg, tare, preset tare

Keys/Buttons:

Flat membrane panel, embossed keys, tactile feel

Rating/Material:

Enclosure: NEMA Type 4X/IP66, heavy-gauge stainless steel

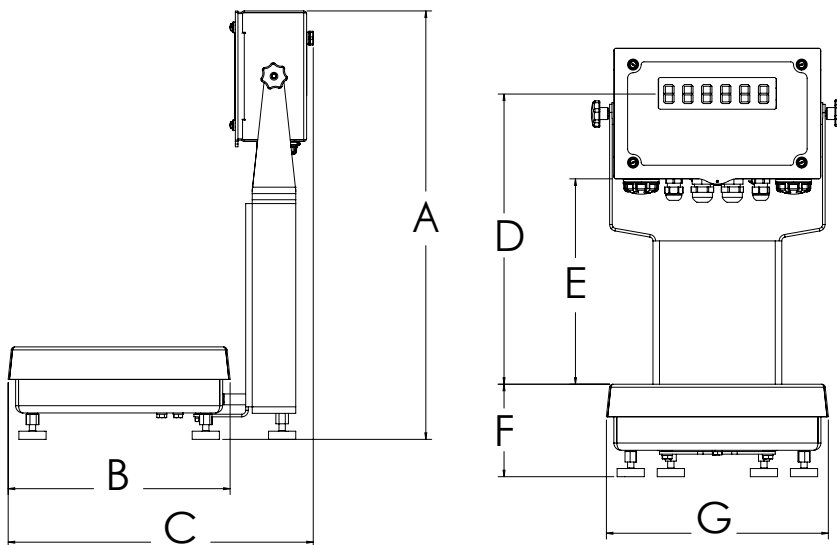
Approvals:

NTEP CC 12-123

Measurement Canada AM-5892

CE Marked

UL/cUL Listed



CW-90XB with 482 indicator

Drawing Dimensions

10 in x 10 in			
A	19.50 in (495.3 mm)	E	9.25 in (235 mm)
B	10.25 in (260.4 mm)	F	4.25 in (108 mm)
C	14.53 in (369.1 mm)	G	10.25 in (260.35 mm)
D	13.25 in (336.6 mm)		
12 in x 12 in			
A	19.50 in (495.3 mm)	E	9.25 in (235 mm)
B	12.25 in (311.2 mm)	F	4.25 in (108 mm)
C	16.53 in (420 mm)	G	12.25 in (311.2 mm)
D	13.25 in (336.6 mm)		

Ready-n-Weigh Bench Scale System

CW-90XB Bench Scale and 482/482 Plus Indicator Package

CW-90XB with 482 Package

Part #	Platform Capacity	Dimensions	Est. Weight	Price
115 VAC, LCD, US Plug-Type B				
201533	5 lb (2.5 kg)	10 x 10 x 4.25 in	24 lb	\$2,172.00
201534	10 lb (5 kg)	10 x 10 x 4.25 in	24 lb	\$2,172.00
201535	25 lb (10 kg)	10 x 10 x 4.25 in	24 lb	\$2,172.00
201536	25 lb (10 kg)	12 x 12 x 4.25 in	27 lb	\$2,262.00
201537	50 lb (25 kg)	12 x 12 x 4.25 in	27 lb	\$2,262.00
201538	100 lb (50 kg)	12 x 12 x 4.25 in	27 lb	\$2,262.00
90-264 VAC, LCD, Euro Plug-Type E				
201546	5 lb (2.5 kg)	10 x 10 x 4.25 in	24 lb	\$2,172.00
201547	10 lb (5 kg)	10 x 10 x 4.25 in	24 lb	\$2,172.00
201548	25 lb (10 kg)	10 x 10 x 4.25 in	24 lb	\$2,172.00
201549	25 lb (10 kg)	12 x 12 x 4.25 in	27 lb	\$2,262.00
201550	50 lb (25 kg)	12 x 12 x 4.25 in	27 lb	\$2,262.00
201551	100 lb (50 kg)	12 x 12 x 4.25 in	27 lb	\$2,262.00

CW-90XB with 482 Plus Package

Part #	Platform Capacity	Dimensions	Est. Weight	Price
115 VAC, LCD, Numeric, US Plug-Type B				
201539	5 lb (2.5 kg)	10 x 10 x 4.25 in	24 lb	\$2,172.00
201541	10 lb (5 kg)	10 x 10 x 4.25 in	24 lb	\$2,172.00
201542	25 lb (10 kg)	10 x 10 x 4.25 in	24 lb	\$2,172.00
201543	25 lb (10 kg)	12 x 12 x 4.25 in	27 lb	\$2,262.00
201544	50 lb (25 kg)	12 x 12 x 4.25 in	27 lb	\$2,262.00
201545	100 lb (50 kg)	12 x 12 x 4.25 in	27 lb	\$2,262.00
90-264 VAC, LCD, Numeric, Euro Plug-Type E				
201552	5 lb (2.5 kg)	10 x 10 x 4.25 in	24 lb	\$2,172.00
201553	10 lb (5 kg)	10 x 10 x 4.25 in	24 lb	\$2,172.00
201554	25 lb (10 kg)	10 x 10 x 4.25 in	24 lb	\$2,172.00
201555	25 lb (10 kg)	12 x 12 x 4.25 in	27 lb	\$2,262.00
201556	50 lb (25 kg)	12 x 12 x 4.25 in	27 lb	\$2,262.00
201557	100 lb (50 kg)	12 x 12 x 4.25 in	27 lb	\$2,262.00

CW-90XB w/482 Internal Battery Package

Part #	Platform Capacity	Dimensions	Est. Weight	Price
115 VAC, LCD, US Plug-Type B				
201559	5 lb (2.5 kg)	10 x 10 x 4.25 in	24 lb	\$2,422.00
201560	10 lb (5 kg)	10 x 10 x 4.25 in	24 lb	\$2,422.00
201561	25 lb (10 kg)	10 x 10 x 4.25 in	24 lb	\$2,422.00
201562	25 lb (10 kg)	12 x 12 x 4.25 in	27 lb	\$2,512.00
201563	50 lb (25 kg)	12 x 12 x 4.25 in	27 lb	\$2,512.00
201564	100 lb (50 kg)	12 x 12 x 4.25 in	27 lb	\$2,512.00
90-264 VAC, LCD, Euro Plug-type E				
201571	5 lb (2.5 kg)	10 x 10 x 4.25 in	24 lb	\$2,422.00
201572	10 lb (5 kg)	10 x 10 x 4.25 in	24 lb	\$2,422.00
201573	25 lb (10 kg)	10 x 10 x 4.25 in	24 lb	\$2,422.00
201574	25 lb (10 kg)	12 x 12 x 4.25 in	27 lb	\$2,512.00
201575	50 lb (25 kg)	12 x 12 x 4.25 in	27 lb	\$2,512.00
201576	100 lb (50 kg)	12 x 12 x 4.25 in	27 lb	\$2,512.00

Ready-n-Weigh Bench Scale System

CW-90XB Bench Scale and 482/482 Plus Indicator Package

CW-90XB with 482 Plus Internal Battery Package

Part #	Platform Capacity	Dimensions	Est. Weight	Price
115 VAC, LCD, Numeric, US Plug-Type B				
201565	5 lb (2.5 kg)	10 x 10 x 4.25 in	24 lb	\$2,422.00
201566	10 lb (5 kg)	10 x 10 x 4.25 in	24 lb	\$2,422.00
201567	25 lb (10 kg)	10 x 10 x 4.25 in	24 lb	\$2,422.00
201568	25 lb (10 kg)	12 x 12 x 4.25 in	27 lb	\$2,512.00
201569	50 lb (25 kg)	12 x 12 x 4.25 in	27 lb	\$2,512.00
201570	100 lb (50 kg)	12 x 12 x 4.25 in	27 lb	\$2,512.00
90-264 VAC, LCD, Numeric, Euro Plug-type E				
201577	5 lb (2.5 kg)	10 x 10 x 4.25 in	24 lb	\$2,422.00
201578	10 lb (5 kg)	10 x 10 x 4.25 in	24 lb	\$2,422.00
201579	25 lb (10 kg)	10 x 10 x 4.25 in	24 lb	\$2,422.00
201580	25 lb (10 kg)	12 x 12 x 4.25 in	27 lb	\$2,512.00
201581	50 lb (25 kg)	12 x 12 x 4.25 in	27 lb	\$2,512.00
201582	100 lb (50 kg)	12 x 12 x 4.25 in	27 lb	\$2,512.00



* US plug (NA) - Type B



** Euro Plug - Type E

Options/Accessories

Part #	Description	Price
131340	Bracket, mounting assembly	\$29.00
164600	USB and Ethernet TCP/IP kit	\$585.00

Ready-n-Weigh Bench Scale System

CW-90XB Bench Scale and 680 Indicator Package

CW-90XB Specifications

Load Cell, NTEP Certified:

IP69K stainless steel and hermetically sealed

Scale Construction:

304 stainless steel

Maximum Overload:

180% to 200% depending on capacity

Overload Protection:

Five-point, independently adjusted

Scale Frame:

AISI304L, straight line finish, Ra = 45 +/- 10

Scale Cover:

AISI304L, straight line finish, Ra = 45 +/- 10

Cable Length:

34 in

Compensated Temperature Range:

14° F to 104° F (-10° C to 40° C)

Approvals:

NTEP CC 95-072, Class III 5,000 d
Measurement Canada AM-5082, Class III 5,000 d
Load cell is FM approved

Scale Warranty:

Three-year limited warranty (includes water ingress)

Indicator Warranty:

Two-year limited warranty

680 Specifications

Communication Ports:

Two RS-232 (three-wire)
RS-485/422 (two-wire or four-wire)
Micro USB (device)
Ethernet TCP/IP (10/100)

Display:

Seven 0.8 in tall, seven-segment digits

Status Annunciators:

Eight LED annunciators

Keys/Buttons:

Flat membrane panel, tactile feel (18 buttons plus ON/OFF)

Rating/Material:

Rating: IP69K
Material: AISI 304 Stainless Steel

680 Synergy Series Approvals:

NTEP CC 12-123
Measurement Canada AM-5892
UL/cUL Listed
CE Marked

Scale
and
Indicator
Package



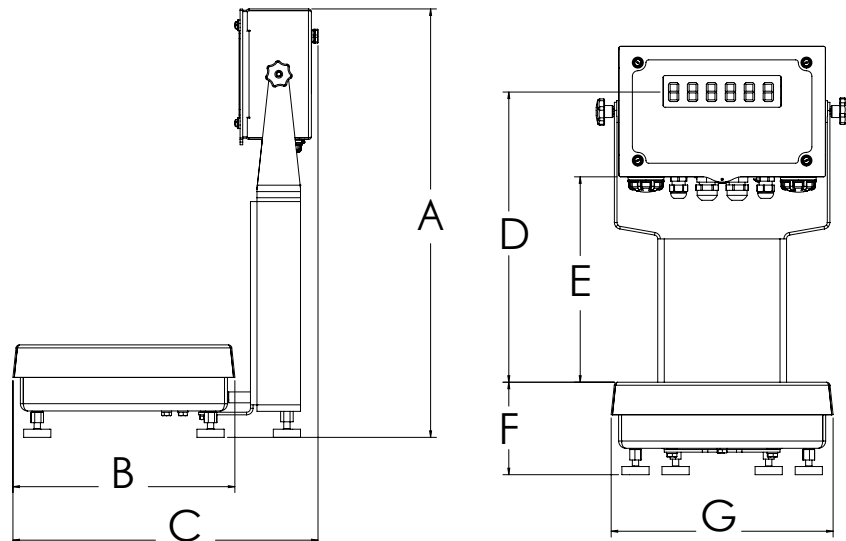
Standard Features

- Package includes scale with IP69K stainless steel hermetically sealed load cell with an indicator and 12-inch column
- Factory calibrated, with indicator setup and configured for 5,000 divisions
- Scale includes rubber feet to provide exceptional traction and avoid scratching surfaces along with removable top cover for ease of cleaning
- AC Power 100-240 VAC
- Full numeric keypad
- LCD backlit indicator display for a variety of environments
- Battery backed time and date
- Standard RS-232 serial ports for connecting to a variety of peripherals
- Ethernet TCP/IP comes standard

APPROVALS



Drawing Dimensions			
680			
10 in x 10 in			
A	19.56 in (496.8 mm)	E	9.31 in (236.5 mm)
B	10.25 in (260.4 mm)	F	4.25 in (108 mm)
C	15.83 in (402.1 mm)	G	10.25 in (260.35 mm)
D	13.31 in (338.1 mm)		
12 in x 12 in			
A	19.56 in (496.8 mm)	E	9.31 in (236.5 mm)
B	12.25 in (311.2 mm)	F	4.25 in (108 mm)
C	16.83 in (427.5 mm)	G	12.25 in (311.2 mm)
D	13.31 in (338.1 mm)		



CW-90XB with 680 indicator

Ready-n-Weigh Bench Scale System

CW-90XB Bench Scale and 680 Indicator Package

CW-90XB with 680 Package

Part #	Platform Capacity	Dimensions	Est. Weight	Price
115-230 VAC, LED, Numeric, US Plug-Type B				
201409	5 lb (2.5 kg)	10 x 10 x 4.25 in	24 lb	\$2,242.00
201410	10 lb (5 kg)	10 x 10 x 4.25 in	24 lb	\$2,242.00
201411	25 lb (10 kg)	10 x 10 x 4.25 in	24 lb	\$2,242.00
201412	25 lb (10 kg)	12 x 12 x 4.25 in	27 lb	\$2,332.00
201413	50 lb (25 kg)	12 x 12 x 4.25 in	27 lb	\$2,332.00
201414	100 lb (50 kg)	12 x 12 x 4.25 in	27 lb	\$2,332.00
115-230 VAC, LED, Numeric, Euro Plug-Type E				
201415	5 lb (2.5 kg)	10 x 10 x 4.25 in	24 lb	\$2,242.00
201416	10 lb (5 kg)	10 x 10 x 4.25 in	24 lb	\$2,242.00
201417	25 lb (10 kg)	10 x 10 x 4.25 in	24 lb	\$2,242.00
201418	25 lb (10 kg)	12 x 12 x 4.25 in	27 lb	\$2,332.00
201419	50 lb (25 kg)	12 x 12 x 4.25 in	27 lb	\$2,332.00
201420	100 lb (50 kg)	12 x 12 x 4.25 in	27 lb	\$2,332.00



[†] US plug (NA) - Type B



^{**} Euro Plug - Type E

BenchMark® MS

Mild Steel Bench Scale

Specifications

Load Cell, NTEP Certified:

IP66 aluminum, environmentally sealed

Output Impedance:

350 ohm

Maximum Overload:

150% to 200% depending on capacity

Overload Protection:

Five-point, independently adjusted

Scale Frame:

Mild steel powder coated black

Scale Cover:

AISI304L, straight line finish, Ra=45 +/- 10

Cable Length:

10 ft (3 m)

Compensated Temperature Range:

14° F to 104° F (-10° C to 40° C)

Warranty:

Two-year limited warranty

Approvals:

NTEP CC 95-072, Class III, 5,000 d

Measurement Canada AM-5082, Class III, 5,000 d

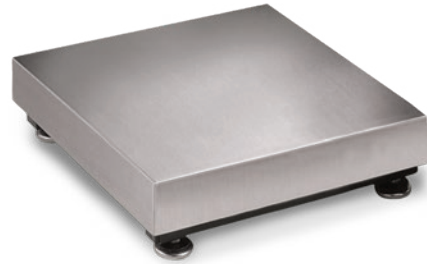
APPROVALS



* Load cell approval



** Load cell approval



Standard Features

- Painted mild steel frame with 304 stainless steel cover
- Base design isolates load cell from overloads and shock loads for added durability
- Specially designed adjustable support feet provide exceptional traction and will not scratch surfaces

Part Number/Price

Part #	Capacity	Platform Dimensions	Est. Weight	Price
18580†	30 lb (15 kg)	12 x 12 x 4.12 in	20 lb	\$890.00
18582†	50 lb (25 kg)	12 x 12 x 4.12 in	20 lb	\$890.00
18584†	100 lb (50 kg)	12 x 12 x 4.12 in	20 lb	\$890.00
18586**	50 lb (25 kg)	12 x 18 x 4.12 in	37 lb	\$980.00
18588**	100 lb (50 kg)	12 x 18 x 4.12 in	37 lb	\$980.00
18590†	50 lb (25 kg)	18 x 18 x 5.25 in	68 lb	\$1,210.00
18592†	100 lb (50 kg)	18 x 18 x 5.25 in	68 lb	\$1,210.00
18594†	150 lb (75 kg)	18 x 18 x 5.25 in	68 lb	\$1,210.00
18596†	200 lb (100 kg)	18 x 18 x 5.25 in	68 lb	\$1,210.00
18598†	250 lb (125 kg)	18 x 18 x 5.25 in	68 lb	\$1,210.00
18600†	300 lb (150 kg)	18 x 18 x 5.25 in	68 lb	\$1,210.00
18602†	500 lb (250 kg)	18 x 18 x 5.25 in	68 lb	\$1,210.00
18604**	1,000 lb (500 kg)	18 x 18 x 5.25 in	68 lb	\$1,210.00
18606†	50 lb (25 kg)	18 x 24 x 5.25 in	78 lb	\$1,335.00
18608†	100 lb (50 kg)	18 x 24 x 5.25 in	78 lb	\$1,335.00
18610†	150 lb (75 kg)	18 x 24 x 5.25 in	78 lb	\$1,335.00
18612†	200 lb (100 kg)	18 x 24 x 5.25 in	78 lb	\$1,335.00
18614†	250 lb (125 kg)	18 x 24 x 5.25 in	78 lb	\$1,335.00
18616†	300 lb (150 kg)	18 x 24 x 5.25 in	78 lb	\$1,335.00
18618†	500 lb (250 kg)	18 x 24 x 5.25 in	78 lb	\$1,335.00
18620**	1,000 lb (500 kg)	18 x 24 x 5.25 in	78 lb	\$1,335.00
18622†	100 lb (50 kg)	24 x 24 x 5.25 in	78 lb	\$1,470.00
18624†	150 lb (75 kg)	24 x 24 x 5.25 in	84 lb	\$1,470.00
18626†	200 lb (100 kg)	24 x 24 x 5.25 in	84 lb	\$1,470.00
18628†	250 lb (125 kg)	24 x 24 x 5.25 in	84 lb	\$1,470.00
18630†	300 lb (150 kg)	24 x 24 x 5.25 in	84 lb	\$1,400.00
18632†	500 lb (250 kg)	24 x 24 x 5.25 in	84 lb	\$1,470.00
18634**	1,000 lb (500 kg)	24 x 24 x 5.25 in	84 lb	\$1,470.00

BenchMark® MS

Mild Steel Bench Scale

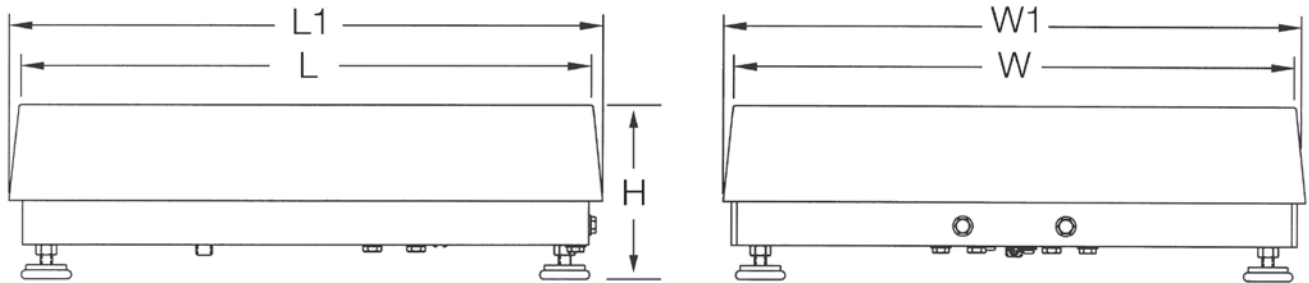
Options/Accessories

Part #	Description	Catalog Page #
Consult	Scale columns	See page 226
Consult	Ball transfer and roller conveyor scale tops	See page 225
Consult	Mobile scale carts	See page 221 to page 224

Dimensions

Part #	Capacity	Platform Size (L x W)	L1	W1	H
18580	30 lb (15 kg)	12 x 12 in	12.50 in	12.50 in	4.12 in
18582	50 lb (25 kg)	12 x 12 in	12.50 in	12.50 in	4.12 in
18584	100 lb (50 kg)	12 x 12 in	12.50 in	12.50 in	4.12 in
18586	50 lb (25 kg)	12 x 18 in	12.50 in	18.50 in	4.12 in
18588	100 lb (50 kg)	12 x 18 in	12.50 in	18.50 in	4.12 in
18590	50 lb (25 kg)	18 x 18 in	18.75 in	18.75 in	5.25 in
18592	100 lb (50 kg)	18 x 18 in	18.75 in	18.75 in	5.25 in
18594	150 lb (75 kg)	18 x 18 in	18.75 in	18.75 in	5.25 in
18596	200 lb (100 kg)	18 x 18 in	18.75 in	18.75 in	5.25 in
18598	250 lb (125 kg)	18 x 18 in	18.75 in	18.75 in	5.25 in
18600	300 lb (150 kg)	18 x 18 in	18.75 in	18.75 in	5.25 in
18602	500 lb (250 kg)	18 x 18 in	18.75 in	18.75 in	5.25 in
18604	1,000 lb (500 kg)	18 x 18 in	18.75 in	18.75 in	5.25 in
18606	50 lb (25 kg)	18 x 24 in	24.75 in	18.75 in	5.25 in
18608	100 lb (50 kg)	18 x 24 in	24.75 in	18.75 in	5.25 in
18610	150 lb (75 kg)	18 x 24 in	24.75 in	18.75 in	5.25 in
18612	200 lb (100 kg)	18 x 24 in	24.75 in	18.75 in	5.25 in
18614	250 lb (125 kg)	18 x 24 in	24.75 in	18.75 in	5.25 in
18616	300 lb (150 kg)	18 x 24 in	24.75 in	18.75 in	5.25 in
18618	500 lb (250 kg)	18 x 24 in	24.75 in	18.75 in	5.25 in
18620	1,000 lb (500 kg)	18 x 24 in	24.75 in	18.75 in	5.25 in
18622	100 lb (50 kg)	24 x 24 in	24.75 in	24.75 in	5.25 in
18624	150 lb (75 kg)	24 x 24 in	24.75 in	24.75 in	5.25 in
18626	200 lb (100 kg)	24 x 24 in	24.75 in	24.75 in	5.25 in
18628	250 lb (125 kg)	24 x 24 in	24.75 in	24.75 in	5.25 in
18630	300 lb (150 kg)	24 x 24 in	24.75 in	24.75 in	5.25 in
18632	500 lb (250 kg)	24 x 24 in	24.75 in	24.75 in	5.25 in
18634	1,000 lb (500 kg)	24 x 24 in	24.75 in	24.75 in	5.25 in

Note: 1in=25.4mm



BenchMark® SS

Stainless Steel Bench Scale

Specifications

Load Cell, NTEP Certified:

IP66 aluminum, environmentally sealed

Output Impedance:

350 ohm

Maximum Overload:

150% to 200% depending on capacity

Overload Protection:

Five-point, independently adjusted

Scale Frame:

AISI304L, glass bead blasted for even appearance

Scale Cover:

AISI304L, straight line finish, Ra=45 +/- 10

Cable Length:

10 ft (3 m)

Compensated Temperature Range:

14° F to 104° F (-10° C to 40° C)

Warranty:

Two-year limited warranty

Approvals:

NTEP CC 95-072, Class III, 5,000 d

Measurement Canada AM-5082, Class III, 5,000 d

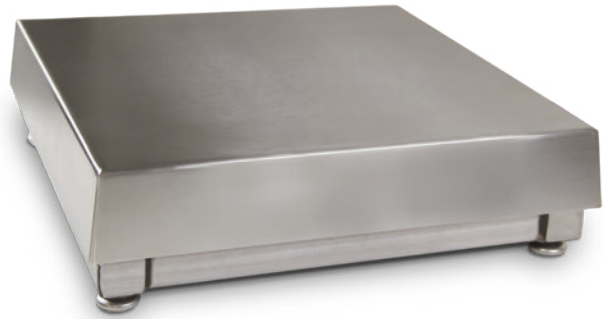
APPROVALS



* Load cell approval



** Load cell approval



Standard Features

- 304 stainless steel frame and cover
- Base design isolates load cell from overloads and shock loads for added durability
- Specially designed adjustable support feet provide exceptional traction and will not scratch surfaces

Part Number/Price

Part #	Capacity	Platform Dimensions	Est. Weight	Price
186222 [†]	50 lb (25 kg)	12 x 18 x 4.00 in	37 lb	\$1,040.00
186223 [†]	100 lb (50 kg)	12 x 18 x 4.00 in	37 lb	\$1,040.00
18591 [†]	50 lb (25 kg)	18 x 18 x 5.25 in	68 lb	\$1,440.00
18593 [†]	100 lb (50 kg)	18 x 18 x 5.25 in	68 lb	\$1,440.00
18595 [†]	150 lb (75 kg)	18 x 18 x 5.25 in	68 lb	\$1,440.00
18597 [†]	200 lb (100 kg)	18 x 18 x 5.25 in	68 lb	\$1,440.00
18599 [†]	250 lb (125 kg)	18 x 18 x 5.25 in	68 lb	\$1,440.00
18601 [†]	300 lb (150 kg)	18 x 18 x 5.25 in	68 lb	\$1,440.00
18603 [†]	500 lb (250 kg)	18 x 18 x 5.25 in	68 lb	\$1,440.00
18605 ^{**}	1,000 lb (500 kg)	18 x 18 x 5.25 in	68 lb	\$1,440.00
18607 [†]	50 lb (25 kg)	18 x 24 x 5.25 in	78 lb	\$1,715.00
18609 [†]	100 lb (50 kg)	18 x 24 x 5.25 in	78 lb	\$1,715.00
18611 [†]	150 lb (75 kg)	18 x 24 x 5.25 in	78 lb	\$1,715.00
18613 [†]	200 lb (100 kg)	18 x 24 x 5.25 in	78 lb	\$1,715.00
18615 [†]	250 lb (125 kg)	18 x 24 x 5.25 in	78 lb	\$1,715.00
18617 [†]	300 lb (150 kg)	18 x 24 x 5.25 in	78 lb	\$1,715.00
18619 [†]	500 lb (250 kg)	18 x 24 x 5.25 in	78 lb	\$1,715.00
18621 ^{**}	1,000 lb (500 kg)	18 x 24 x 5.25 in	78 lb	\$1,715.00
18623 [†]	100 lb (50 kg)	24 x 24 x 5.25 in	84 lb	\$2,110.00
18625 [†]	150 lb (75 kg)	24 x 24 x 5.25 in	84 lb	\$2,110.00
18627 [†]	200 lb (100 kg)	24 x 24 x 5.25 in	84 lb	\$2,110.00
18629 [†]	250 lb (125 kg)	24 x 24 x 5.25 in	84 lb	\$2,110.00
18631 [†]	300 lb (150 kg)	24 x 24 x 5.25 in	84 lb	\$2,110.00
18633 [†]	500 lb (250 kg)	24 x 24 x 5.25 in	84 lb	\$2,110.00
18635 ^{**}	1,000 lb (500 kg)	24 x 24 x 5.25 in	84 lb	\$2,110.00

BenchMark® SS

Stainless Steel Bench Scale

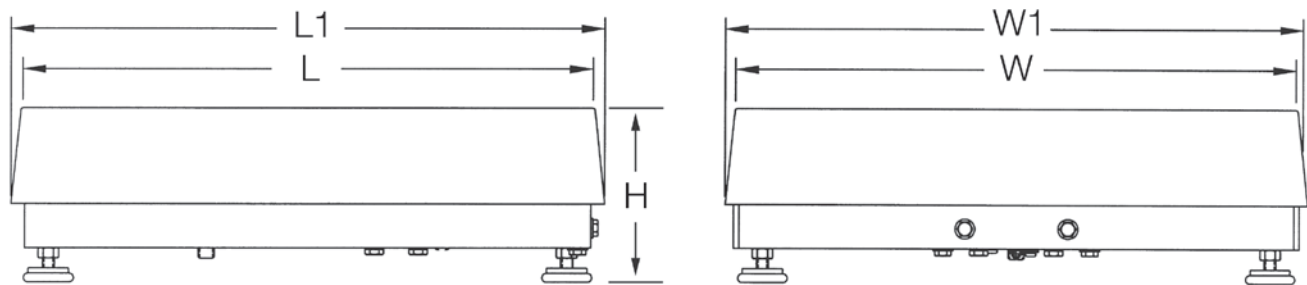
Options/Accessories

Part #	Description	Catalog Page #
Consult	Scale columns	See page 226
Consult	Ball transfer and roller conveyor scale tops	See page 225
Consult	Mobile scale carts	See page 221 to page 224

Dimensions

Part #	Capacity	Platform Size (L x W)	L1	W1	H
186222	50 lb (25 kg)	12 x 18 in	12.50 in	18.50 in	4.00 in
186223	100 lb (50 kg)	12 x 18 in	12.50 in	18.50 in	4.00 in
18591	50 lb (25 kg)	18 x 18 in	18.75 in	18.75 in	5.25 in
18593	100 lb (50 kg)	18 x 18 in	18.75 in	18.75 in	5.25 in
18595	150 lb (75 kg)	18 x 18 in	18.75 in	18.75 in	5.25 in
18597	200 lb (100 kg)	18 x 18 in	18.75 in	18.75 in	5.25 in
18599	250 lb (125 kg)	18 x 18 in	18.75 in	18.75 in	5.25 in
18601	300 lb (150 kg)	18 x 18 in	18.75 in	18.75 in	5.25 in
18603	500 lb (250 kg)	18 x 18 in	18.75 in	18.75 in	5.25 in
18605	1,000 lb (500 kg)	18 x 18 in	18.75 in	18.75 in	5.25 in
18607	50 lb (25 kg)	18 x 24 in	24.75 in	18.75 in	5.25 in
18609	100 lb (50 kg)	18 x 24 in	24.75 in	18.75 in	5.25 in
18611	150 lb (75 kg)	18 x 24 in	24.75 in	18.75 in	5.25 in
18613	200 lb (100 kg)	18 x 24 in	24.75 in	18.75 in	5.25 in
18615	250 lb (125 kg)	18 x 24 in	24.75 in	18.75 in	5.25 in
18617	300 lb (150 kg)	18 x 24 in	24.75 in	18.75 in	5.25 in
18619	500 lb (250 kg)	18 x 24 in	24.75 in	18.75 in	5.25 in
18621	1,000 lb (500 kg)	18 x 24 in	24.75 in	18.75 in	5.25 in
18623	100 lb (50 kg)	24 x 24 in	24.75 in	24.75 in	5.25 in
18625	150 lb (75 kg)	24 x 24 in	24.75 in	24.75 in	5.25 in
18627	200 lb (100 kg)	24 x 24 in	24.75 in	24.75 in	5.25 in
18629	250 lb (125 kg)	24 x 24 in	24.75 in	24.75 in	5.25 in
18631	300 lb (150 kg)	24 x 24 in	24.75 in	24.75 in	5.25 in
18633	500 lb (250 kg)	24 x 24 in	24.75 in	24.75 in	5.25 in
18635	1,000 lb (500 kg)	24 x 24 in	24.75 in	24.75 in	5.25 in

Note: 1in=25.4mm



BenchMark® HE

Hostile Environment Series Bench Scale

Specifications

Load Cell, NTEP Certified:

IP69K stainless steel, hermetically sealed

Output Impedance:

1,000 ohm

Maximum Overload:

150% to 200% depending on capacity

Overload Protection:

Five-point, independently adjusted

Scale Frame:

AISI304L, glass bead blasted for even appearance

Scale Cover:

AISI304L, straight line finish, Ra=45 +/- 10

Cable Length:

10 ft (3 m)

Compensated Temperature Range:

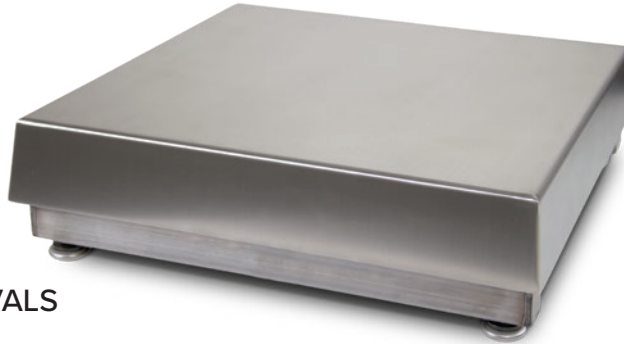
14° F to 104° F (-10° C to 40° C)

Warranty:

Three-year limited warranty
(includes water ingress)

Approvals:

NTEP CC 95-072, Class III, 5,000 d
Measurement Canada AM-5082, Class III, 5,000 d
Load cell is FM approved



APPROVALS



Standard Features

- 304 stainless steel frame and cover
- Base design isolates load cell from overloads and shock loads for added durability
- Specially designed adjustable support feet provide exceptional traction and will not scratch surfaces

Part Number/Price

Part #	Capacity	Platform Dimensions	Est. Weight	Price
186897	50 lb (25 kg)	12 x 18 x 4.00 in	37 lb	\$1,480.00
186898	100 lb (50 kg)	12 x 18 x 4.00 in	37 lb	\$1,480.00
86952	50 lb (25 kg)	18 x 18 x 5.25 in	68 lb	\$1,780.00
86953	100 lb (50 kg)	18 x 18 x 5.25 in	68 lb	\$1,780.00
86954	150 lb (75 kg)	18 x 18 x 5.25 in	68 lb	\$1,780.00
86955	200 lb (100 kg)	18 x 18 x 5.25 in	68 lb	\$1,780.00
86956	250 lb (125 kg)	18 x 18 x 5.5 in	68 lb	\$2,130.00
86957	300 lb (150 kg)	18 x 18 x 5.5 in	68 lb	\$2,130.00
86958	500 lb (250 kg)	18 x 18 x 5.5 in	68 lb	\$2,130.00
86959	1,000 lb (500 kg)	18 x 18 x 5.5 in	68 lb	\$2,130.00
86960	50 lb (25 kg)	18 x 24 x 5.5 in	78 lb	\$2,405.00
86961	100 lb (50 kg)	18 x 24 x 5.5 in	78 lb	\$2,405.00
86962	150 lb (75 kg)	18 x 24 x 5.5 in	78 lb	\$2,405.00
86963	200 lb (100 kg)	18 x 24 x 5.5 in	78 lb	\$2,405.00
86964	250 lb (125 kg)	18 x 24 x 5.5 in	78 lb	\$2,405.00
86965	300 lb (150 kg)	18 x 24 x 5.5 in	78 lb	\$2,405.00
86966	500 lb (250 kg)	18 x 24 x 5.5 in	78 lb	\$2,440.00
86967	1,000 lb (500 kg)	18 x 24 x 5.5 in	78 lb	\$2,440.00
86968	100 lb (50 kg)	24 x 24 x 5.5 in	84 lb	\$2,800.00
86969	150 lb (75 kg)	24 x 24 x 5.5 in	84 lb	\$2,800.00
86970	200 lb (100 kg)	24 x 24 x 5.5 in	84 lb	\$2,800.00
86971	250 lb (125 kg)	24 x 24 x 5.5 in	84 lb	\$2,800.00
86972	300 lb (150 kg)	24 x 24 x 5.5 in	84 lb	\$2,800.00
86973	500 lb (250 kg)	24 x 24 x 5.5 in	84 lb	\$2,800.00
86974	1,000 lb (500 kg)	24 x 24 x 5.5 in	84 lb	\$2,800.00

BenchMark® HE

Hostile Environment Series Bench Scale

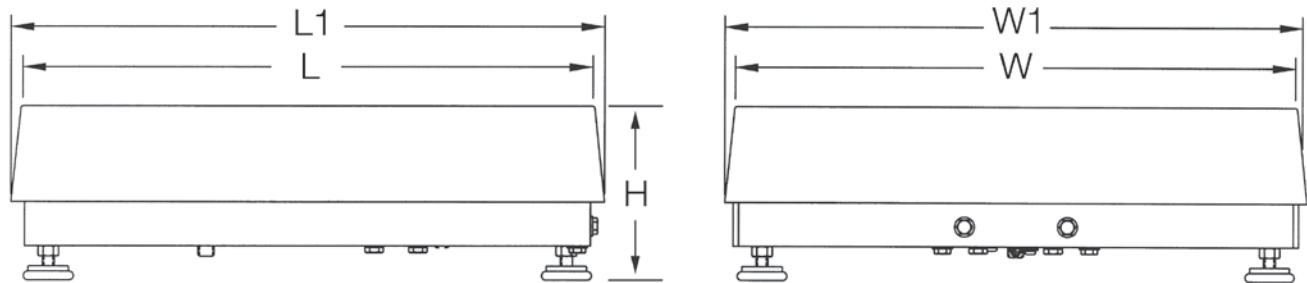
Options/Accessories

Part #	Description	Catalog Page #
Consult	Scale columns	See page 226
Consult	Ball transfer and roller conveyor scale tops	See page 225
Consult	Mobile scale carts	See page 221 to page 224

Dimensions

Part #	Capacity	Platform Size (L x W)	L1	W1	H
186897	50 lb (25 kg)	12 x 18 in	12.50 in	18.50 in	4.00 in
186898	100 lb (50 kg)	12 x 18 in	12.50 in	18.50 in	4.00 in
86952	50 lb (25 kg)	18 x 18 in	18.75 in	18.75 in	5.25 in
86953	100 lb (50 kg)	18 x 18 in	18.75 in	18.75 in	5.25 in
86954	150 lb (75 kg)	18 x 18 in	18.75 in	18.75 in	5.25 in
86955	200 lb (100 kg)	18 x 18 in	18.75 in	18.75 in	5.25 in
86956	250 lb (125 kg)	18 x 18 in	18.75 in	18.75 in	5.5 in
86957	300 lb (150 kg)	18 x 18 in	18.75 in	18.75 in	5.5 in
86958	500 lb (250 kg)	18 x 18 in	18.75 in	18.75 in	5.5 in
86959	1,000 lb (500 kg)	18 x 18 in	18.75 in	18.75 in	5.5 in
86960	50 lb (25 kg)	18 x 24 in	24.75 in	18.75 in	5.5 in
86961	100 lb (50 kg)	18 x 24 in	24.75 in	18.75 in	5.5 in
86962	150 lb (75 kg)	18 x 24 in	24.75 in	18.75 in	5.5 in
86963	200 lb (100 kg)	18 x 24 in	24.75 in	18.75 in	5.5 in
86964	250 lb (125 kg)	18 x 24 in	24.75 in	18.75 in	5.5 in
86965	300 lb (150 kg)	18 x 24 in	24.75 in	18.75 in	5.5 in
86966	500 lb (250 kg)	18 x 24 in	24.75 in	18.75 in	5.5 in
86967	1,000 lb (500 kg)	18 x 24 in	24.75 in	18.75 in	5.5 in
86968	100 lb (50 kg)	24 x 24 in	24.75 in	24.75 in	5.5 in
86969	150 lb (75 kg)	24 x 24 in	24.75 in	24.75 in	5.5 in
86970	200 lb (100 kg)	24 x 24 in	24.75 in	24.75 in	5.5 in
86971	250 lb (125 kg)	24 x 24 in	24.75 in	24.75 in	5.5 in
86972	300 lb (150 kg)	24 x 24 in	24.75 in	24.75 in	5.5 in
86973	500 lb (250 kg)	24 x 24 in	24.75 in	24.75 in	5.5 in
86974	1,000 lb (500 kg)	24 x 24 in	24.75 in	24.75 in	5.5 in

Note: 1in=25.4mm



BenchMark® HE-X

Hostile Environment Extreme Bench Scale

Specifications

Load Cell, NTEP Certified:

IP69K stainless steel, hermetically sealed

Output Impedance:

1,000 ohm

Maximum Overload:

150% to 200% depending on capacity

Overload Protection:

Five-point, independently adjusted

Scale Frame:

AISI304L, glass bead blasted for even appearance

Scale Cover:

AISI304L, straight line finish, Ra=45 +/- 10

Cable Length:

10ft (3m)

Compensated Temperature Range:

14° F to 104° F (-10° C to 40° C)

Warranty:

Three-year limited warranty (includes water ingress)

Approvals:

Load cell is FM approved



Standard Features

- Rugged washdown design, rigid 304 stainless steel frame and cover constructed with continuous welds
- Four adjustable stainless steel support feet
- IP69K stainless steel load cell
- Meets Sanitary Design Principles
- Meets HACCP requirements

APPROVALS



Part Number/Price

Part #	Capacity	Platform Dimensions	Est. Weight	Price
192346	50 lb (25 kg)	12 x 18 x 5.25 in	59 lb	\$2,925.00
192347	100 lb (50 kg)	12 x 18 x 5.25 in	59 lb	\$2,925.00
191455	50 lb (25 kg)	18 x 18 x 5.25 in	73 lb	\$3,100.00
191456	100 lb (50 kg)	18 x 18 x 5.25 in	73 lb	\$3,100.00
191457	150 lb (75 kg)	18 x 18 x 5.25 in	73 lb	\$3,100.00
191458	200 lb (100 kg)	18 x 18 x 5.25 in	73 lb	\$3,100.00
191459	250 lb (125 kg)	18 x 18 x 5.25 in	73 lb	\$3,100.00
191460	300 lb (150 kg)	18 x 18 x 5.25 in	73 lb	\$3,100.00
191461	500 lb (250 kg)	18 x 18 x 5.25 in	73 lb	\$3,100.00
191462	1,000 lb (500 kg)	18 x 18 x 5.25 in	73 lb	\$3,100.00
191467	50 lb (25 kg)	18 x 24 x 5.25 in	90 lb	\$3,345.00
191469	100 lb (50 kg)	18 x 24 x 5.25 in	90 lb	\$3,345.00
191470	150 lb (75 kg)	18 x 24 x 5.25 in	90 lb	\$3,345.00
191472	200 lb (100 kg)	18 x 24 x 5.25 in	90 lb	\$3,345.00
191473	250 lb (125 kg)	18 x 24 x 5.25 in	90 lb	\$3,345.00
191474	300 lb (150 kg)	18 x 24 x 5.25 in	90 lb	\$3,345.00
191475	500 lb (250 kg)	18 x 24 x 5.25 in	90 lb	\$3,345.00
191476	1,000 lb (500 kg)	18 x 24 x 5.25 in	90 lb	\$3,345.00
191479	100 lb (50 kg)	24 x 24 x 5.25 in	122 lb	\$3,600.00
191480	150 lb (75 kg)	24 x 24 x 5.25 in	122 lb	\$3,600.00
191481	200 lb (100 kg)	24 x 24 x 5.25 in	122 lb	\$3,600.00
191482	250 lb (125 kg)	24 x 24 x 5.25 in	122 lb	\$3,600.00
191483	300 lb (150 kg)	24 x 24 x 5.25 in	122 lb	\$3,600.00
191485	500 lb (250 kg)	24 x 24 x 5.25 in	122 lb	\$3,600.00
191486	1,000 lb (500 kg)	24 x 24 x 5.25 in	122 lb	\$3,600.00

BenchMark® HE-X

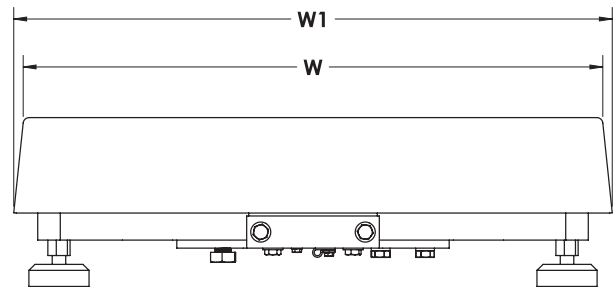
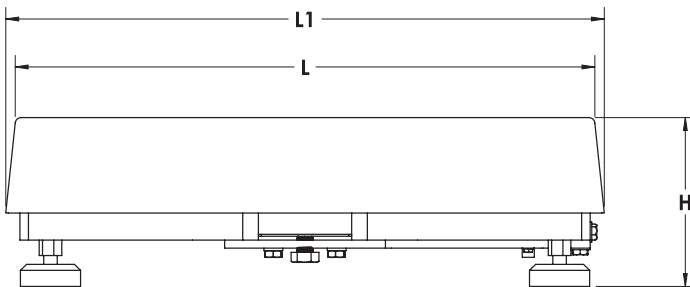
Hostile Environment Extreme Bench Scale

Options/Accessories

Part #	Description	Catalog Page #
Consult	Scale columns	See page 226
Consult	Ball transfer and roller conveyor scale tops	See page 225
Consult	Mobile scale carts	See page 221 to page 224

Dimensions

Part #	Capacity	Platform Size (L x W)	L1	W1	H
192346	50 lb (25 kg)	12 x 18 in	12.50 in	18.50 in	5.25 in
192347	100 lb (50 kg)	12 x 18 in	12.50 in	18.50 in	5.25 in
191455	50 lb (25 kg)	18 x 18 in	18.75 in	18.75 in	5.25 in
191456	100 lb (50 kg)	18 x 18 in	18.75 in	18.75 in	5.25 in
191457	150 lb (75 kg)	18 x 18 in	18.75 in	18.75 in	5.25 in
191458	200 lb (100 kg)	18 x 18 in	18.75 in	18.75 in	5.25 in
191459	250 lb (125 kg)	18 x 18 in	18.75 in	18.75 in	5.25 in
191460	300 lb (150 kg)	18 x 18 in	18.75 in	18.75 in	5.25 in
191461	500 lb (250 kg)	18 x 18 in	18.75 in	18.75 in	5.25 in
191462	1,000 lb (500 kg)	18 x 18 in	18.75 in	18.75 in	5.25 in
191467	50 lb (25 kg)	18 x 24 in	18.75 in	24.75 in	5.25 in
191469	100 lb (50 kg)	18 x 24 in	18.75 in	24.75 in	5.25 in
191470	150 lb (75 kg)	18 x 24 in	18.75 in	24.75 in	5.25 in
191472	200 lb (100 kg)	18 x 24 in	18.75 in	24.75 in	5.25 in
191473	250 lb (125 kg)	18 x 24 in	18.75 in	24.75 in	5.25 in
191474	300 lb (150 kg)	18 x 24 in	18.75 in	24.75 in	5.25 in
191475	500 lb (250 kg)	18 x 24 in	18.75 in	24.75 in	5.25 in
191476	1,000 lb (500 kg)	18 x 24 in	18.75 in	24.75 in	5.25 in
191479	100 lb (50 kg)	24 x 24 in	24.75 in	24.75 in	5.25 in
191480	150 lb (75 kg)	24 x 24 in	24.75 in	24.75 in	5.25 in
191481	200 lb (100 kg)	24 x 24 in	24.75 in	24.75 in	5.25 in
191482	250 lb (125 kg)	24 x 24 in	24.75 in	24.75 in	5.25 in
191483	300 lb (150 kg)	24 x 24 in	24.75 in	24.75 in	5.25 in
191485	500 lb (250 kg)	24 x 24 in	24.75 in	24.75 in	5.25 in
191486	1,000 lb (500 kg)	24 x 24 in	24.75 in	24.75 in	5.25 in



BenchMark® LP

Low-Profile Bench Scale

Specifications

Load Cell, Rated Output:

IP65 aluminum, 1.0 mV/V ±10%

End Load Capacity:

60% of full scale capacity

Scale Frame:

Mild steel powder coated black

Scale Cover:

AISI304L, straight line finish, Ra=45 +/- 10

Cable Length:

20 ft (6.1 m) for connecting junction box to indicator

Warranty:

Two-year limited warranty

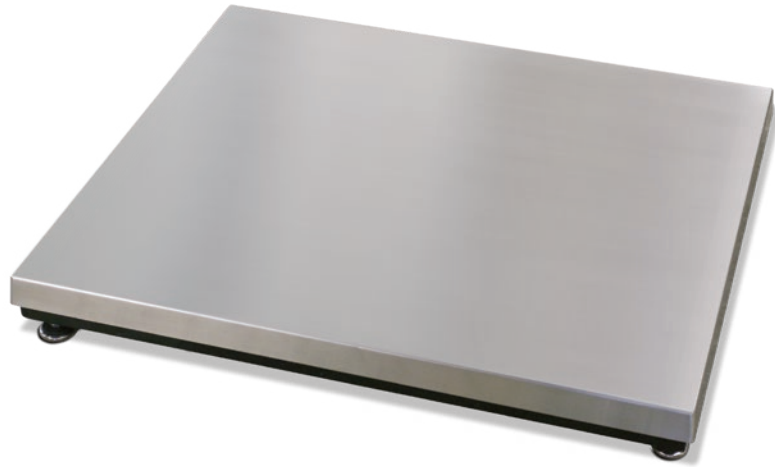
Approvals:


NTEP CC 08-017, Class III 5,000 d (except

1,000 lb capacity)

Measurement Canada AM 5660, Class III 5,000 d

(except 500 kg capacity)



 Ideal for aviation weighing. A complete system can be sold with the Tracer® AV2. Reference Aviation section for specifications.

Standard Features

- Mild steel base construction
- 304 stainless steel cover
- ABS junction box
- Four planar beam load cells
- Adjustable leveling feet
- 20 ft of EL147 load cell cable
- Holes in lower frame for mounting scale without adjustable leveling feet

APPROVALS



Part Number/Price

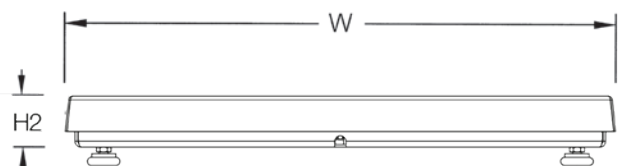
Part #	Capacity	Platform Dimensions L x W x H1 (H2)	Est. Weight	Price
97662	100 lb (50 kg)	18 x 18 x 2.63 in (1.67 in*)	75 lb	\$1,385.00
97663	250 lb (125 kg)	18 x 18 x 2.50 in (1.74 in*)	85 lb	\$1,415.00
97664	500 lb (250 kg)	18 x 18 x 2.69 in (1.93 in*)	85 lb	\$1,450.00
97665	100 lb (50 kg)	24 x 24 x 2.66 in (1.69 in*)	85 lb	\$1,655.00
97666	250 lb (125 kg)	24 x 24 x 2.83 in (2.07 in*)	100 lb	\$1,680.00
97667	500 lb (250 kg)	24 x 24 x 3.02 in (2.26 in*)	100 lb	\$1,715.00
97668	500 lb (250 kg)	30 x 30 x 3.02 in (2.26 in*)	150 lb	\$1,975.00
97669**	1,000 lb (500 kg)	30 x 30 x 3.47 in (2.70 in*)	190 lb	\$2,040.00
97670	500 lb (250 kg)	36 x 36 x 3.02 in (2.26 in*)	175 lb	\$2,590.00
97671**	1,000 lb (500 kg)	36 x 36 x 3.47 in (2.70 in*)	175 lb	\$2,650.00

*Height without adjustable leveling feet

** Non-NTEP or Measurement Canada Approved

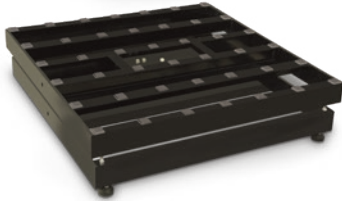
Options/Accessories

Part #	Description	Price
208904	20 ft cable with DB-9 connector for connecting to Tracer AV2	\$50.00



BenchMark® HD

Heavy Duty Bench Scale



Standard Features

- Heavy-duty designed mild steel base construction with 304 stainless steel cover
- Polyurethane rubber leveling feet with stainless steel stems

APPROVALS



Specifications

Load Cell, NTEP Certified:

IP67 aluminum, environmentally sealed

Output Impedance:

350 ohm

Maximum Overload:

200%

Overload Protection:

Five-point, independently adjusted

Scale Frame:

Mild steel powder coated black

Scale Cover:

AISI304L, straight line finish, Ra=45 +/- 10

Cable Length:

10 ft (3 m)

Compensated Temperature Range:

14° F to 104° F (-10° C to 40° C)

Warranty:

Two-year limited warranty

Approvals:

NTEP CC 06-010, Class III 5,000 d

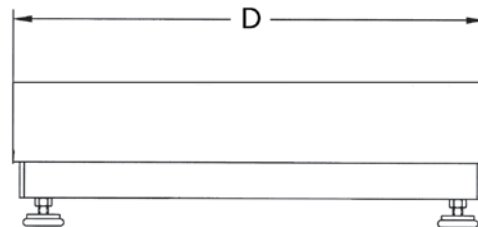
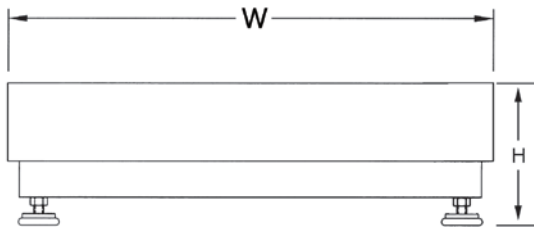
Measurement Canada AM-5625, Class III 5,000 d

Load cell is cFMus

Part Number/Price

Part #	Capacity	Platform Dimensions (L x W x H)	Est. Weight	Price
93414	250 lb (125 kg)	30 x 30 x 8.75 in	300 lb	\$2,125.00
93415	500 lb (225 kg)	30 x 30 x 8.75 in	300 lb	\$2,125.00
93416	250 lb (125 kg)	36 x 36 x 8.75 in	330 lb	\$2,575.00
93417	500 lb (225 kg)	36 x 36 x 8.75 in	330 lb	\$2,575.00

Consult factory for modifications for airport baggage scales.



BenchMark® HD-1 Aviation

Heavy Duty Bench Scale

Specifications

Load Cell, NTEP Certified:

IP67 aluminum, environmentally sealed

Output Impedance:

350 ohm

Maximum Overload:

200%

Overload Protection:

Five-point, independently adjusted

Cable Length:

10 ft (3 m)

Compensated Temperature Range:

14° F to 104° F (-10° C to 40° C)

Warranty:

Two-year limited warranty

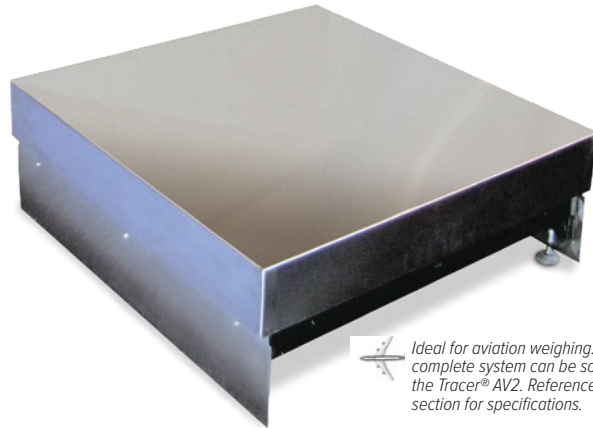
Approvals:

NTEP CC 06-010, Class III 5,000 d

Measurement Canada AM-5625, Class III 5,000 d

Load cell is cFMus

APPROVALS



Ideal for aviation weighing. A complete system can be sold with the Tracer® AV2. Reference Aviation section for specifications.

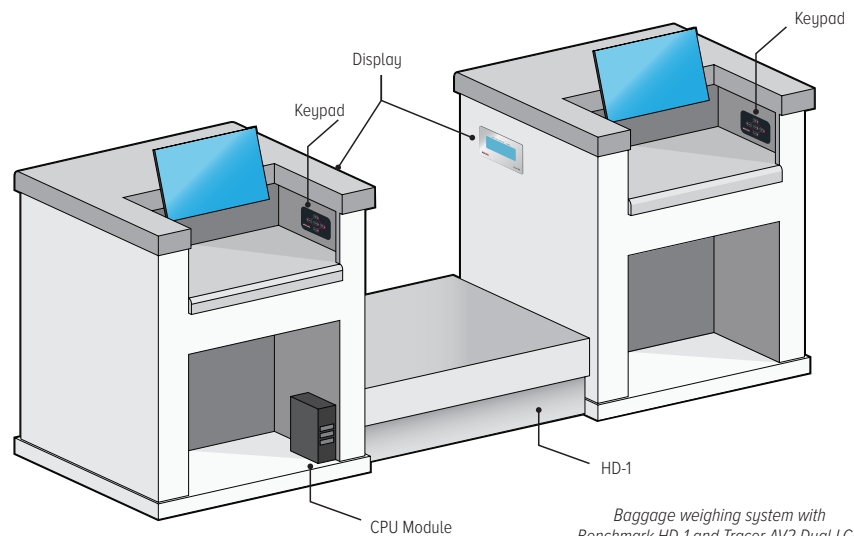
Standard Features

- Heavy-duty designed mild steel base construction with 304 stainless steel cover
- Polyurethane rubber leveling feet with stainless steel stems
- Load cell comes standard with DB-9 connector for connecting to Tracer AV2
- Front and back kick plates are included for aesthetic, safety and functionality
- Scale is held in position with 2 foot keepers
- Wooden cover support to help protect scale cover from dimpling and denting caused by luggage wheels

Part Number/Price

Part #	Capacity	Platform Dimensions	Est. Weight	Price
Consult	500 lb (225 kg)	L x W x 12 in	330 lb	Consult

Note: Maximum size is up to 36in x 36in, height is always 12in
L x W supplied by customer

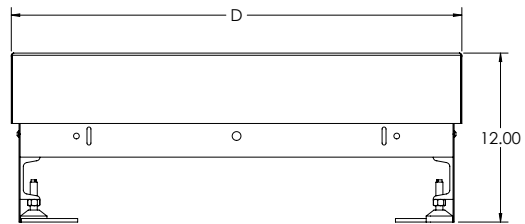
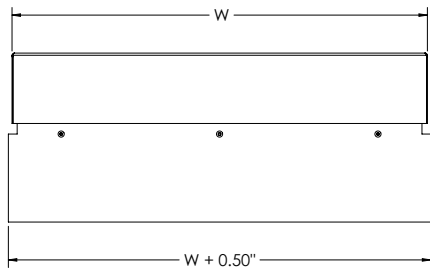
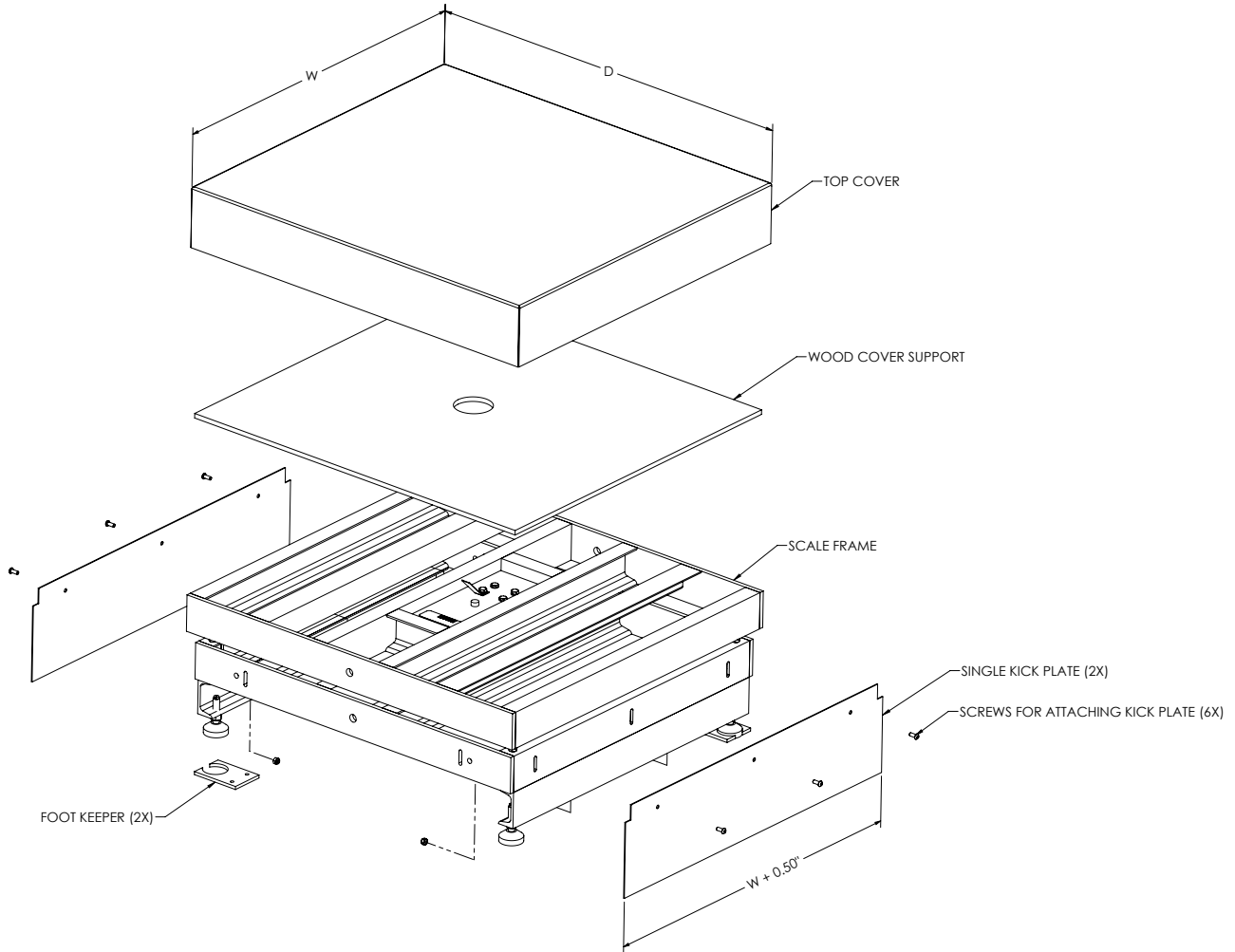


Baggage weighing system with BenchMark HD-1 and Tracer AV2 Dual LCD Panel Mount Display, Dual keypad

BenchMark® HD-1 Aviation

Heavy Duty Bench Scale

BENCH SCALES



www.ricelake.com | Phone: 800-472-6703

RICE LAKE

BenchMark® HD-2 Aviation

Heavy Duty Bench Scale

Specifications

Load Cell, NTEP Certified:

IP67 aluminum, environmentally sealed

Output Impedance:

350 ohm

Maximum Overload:

200%

Overload Protection:

Five-point, independently adjusted

Cable Length:

10 ft (3 m)

Compensated Temperature Range:

14° F to 104° F (-10° C to 40° C)

Warranty:

Two-year limited warranty

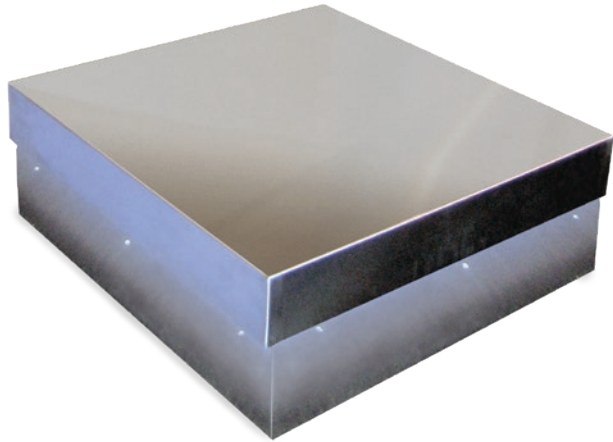
Approvals:

NTEP CC 06-010, Class III 5,000 d

Measurement Canada AM-5625, Class III 5,000 d

Load cell is cFMus

APPROVALS



Ideal for aviation weighing. A complete system can be sold with the Tracer® AV2. Reference Aviation section for specifications.

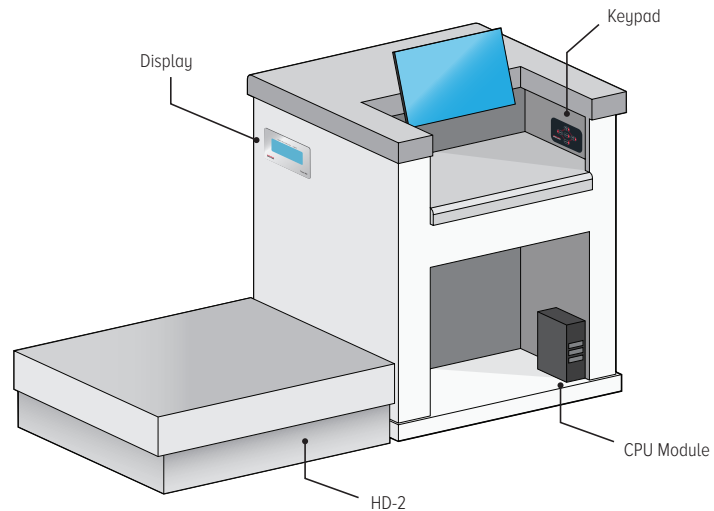
Standard Features

- Heavy-duty designed mild steel base construction with 304 stainless steel cover
- Polyurethane rubber leveling feet with stainless steel stems
- Load cell comes standard with DB-9 connector for connecting to Tracer AV2
- Front and back kick plates are included for aesthetic, safety and functionality
- Scale is held in position with 2 foot keepers
- Wooden cover support to help protect scale cover from dimpling and denting caused by luggage wheels

Part Number/Price

Part #	Capacity	Platform Dimensions	Est. Weight	Price
Consult	500 lb (225 kg)	L x W x 12 in	330 lb	Consult

Note: Maximum size is up to 36in x 36in, height is always 12in
L x W supplied by customer

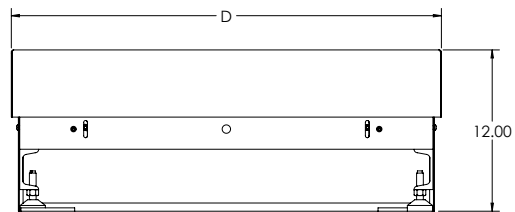
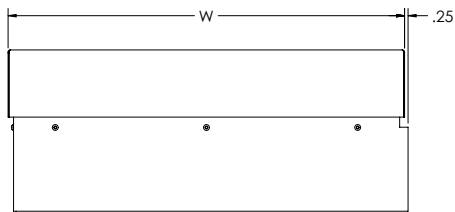
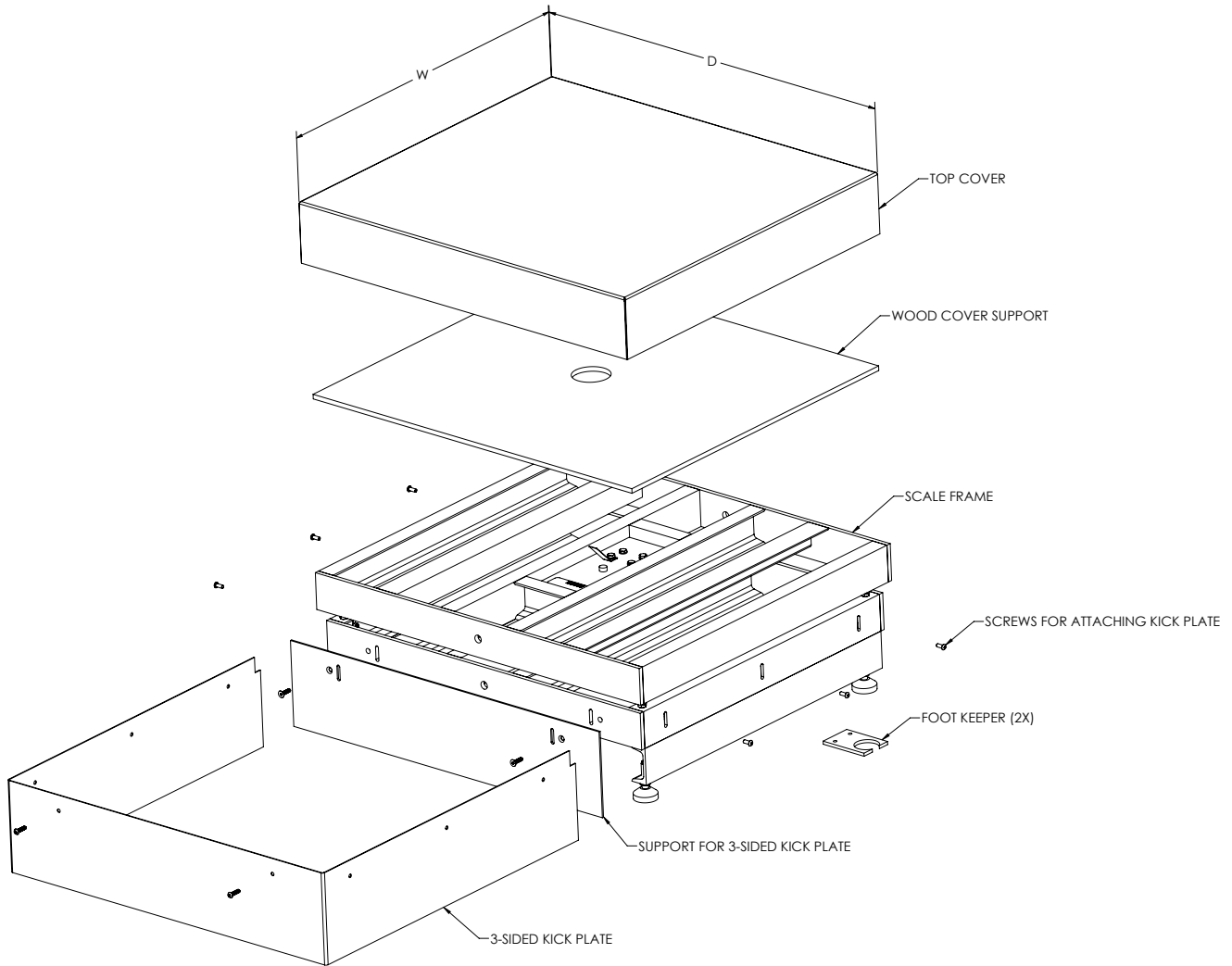


Baggage weighing system with Benchmark HD-2 and Tracer AV2 Single LCD Panel Mount Display, Single keypad

BenchMark® HD-2 Aviation

Heavy Duty Bench Scale

BENCH SCALES



www.ricelake.com | Phone: 800-472-6703

RICE LAKE

BenchMark® HD-3 Aviation

Heavy Duty Bench Scale

Specifications

Load Cell, NTEP Certified:

IP67 aluminum, environmentally sealed

Output Impedance:

350 ohm

Maximum Overload:

200%

Overload Protection:

Five-point, independently adjusted

Cable Length:

10 ft (3 m)

Compensated Temperature Range:

14° F to 104° F (-10° C to 40° C)

Warranty:

Two-year limited warranty

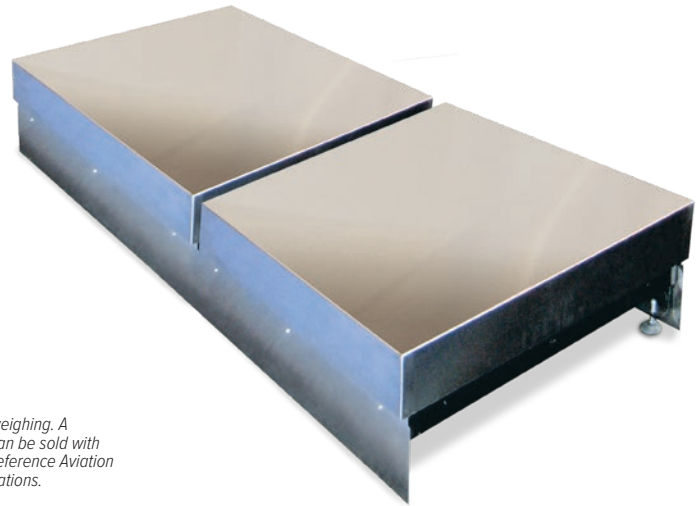
Approvals:

NTEP CC 06-010, Class III 5,000 d

Measurement Canada AM-5625, Class III 5,000 d

Load cell is cFMus

APPROVALS



Ideal for aviation weighing. A complete system can be sold with the Tracer® AV2. Reference Aviation section for specifications.

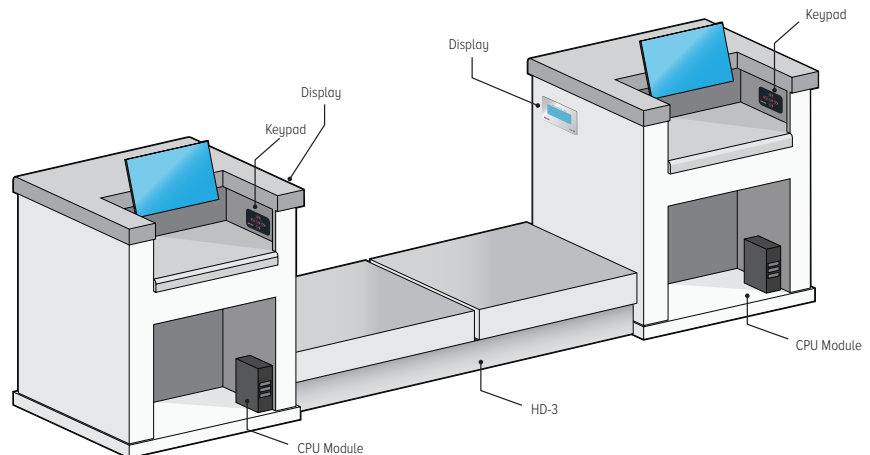
Standard Features

- Heavy-duty designed mild steel base construction with 304 stainless steel cover
- Polyurethane rubber leveling feet with stainless steel stems
- Load cell comes standard with DB-9 connector for connecting to Tracer AV2
- Front and back kick plates for both scales are included for aesthetic, safety and functionality
- Scale is held in position with 4 foot keepers, 2 for each scale
- Wooden cover support to help protect scale cover from dimpling and denting caused by luggage wheels

Part Number/Price

Part #	Capacity	Platform Dimensions	Est. Weight	Price
Consult	500 lb (225 kg)	L x W x 12 in	330 lb	Consult

Note: Maximum size is up to 36in x 36in, height is always 12in
L x W supplied by customer.

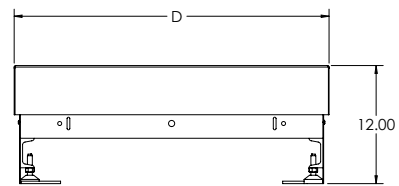
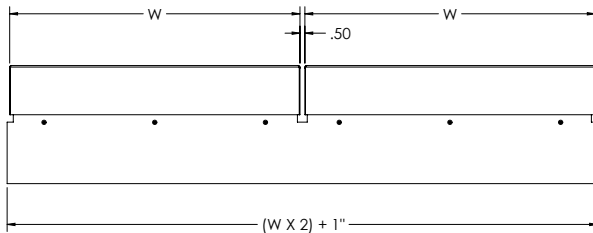
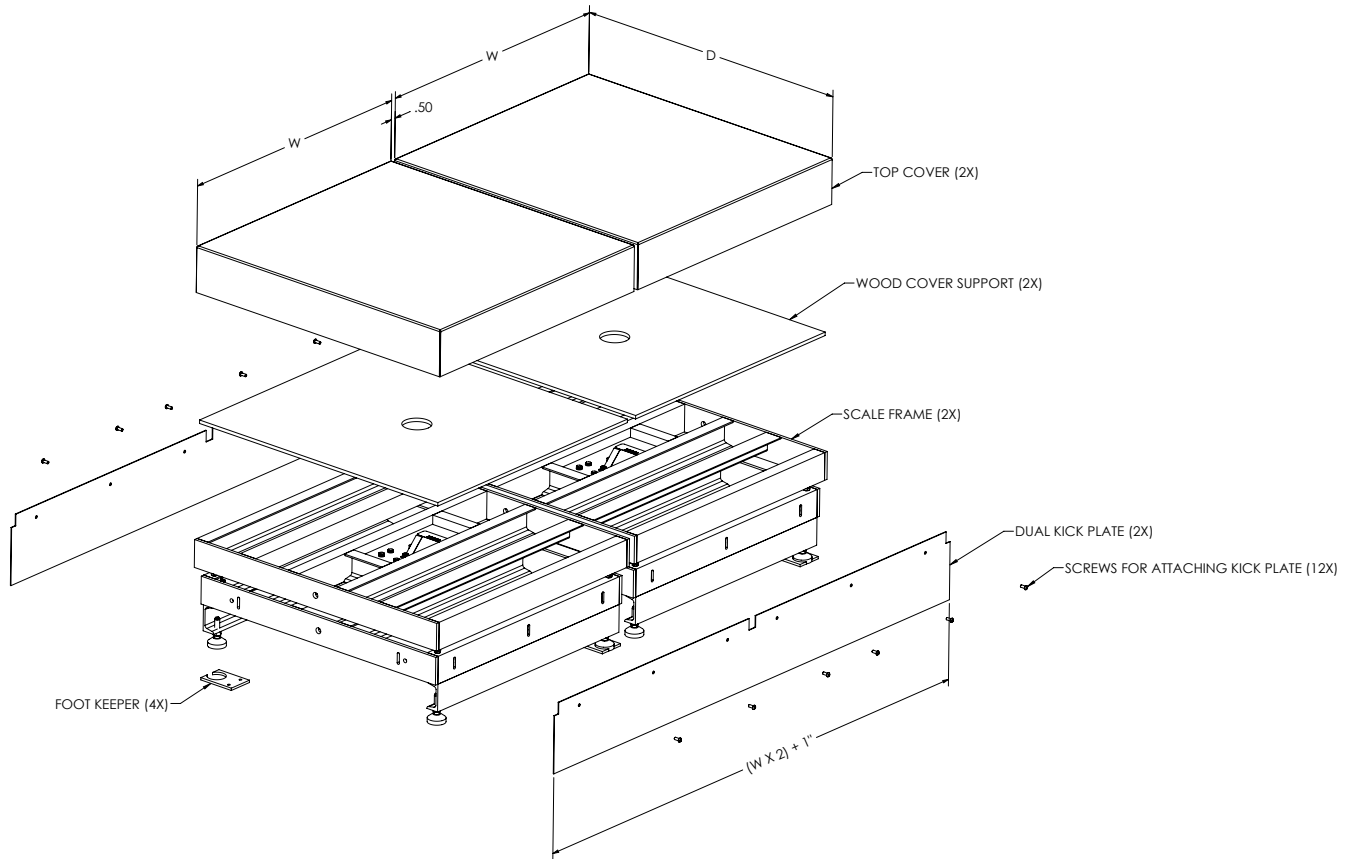


Baggage weighing system with BenchMark HD-3 and Tracer AV2
Single LCD Panel Mount Display, Single keypad

BenchMark® HD-3 Aviation

Heavy Duty Bench Scale

BENCH SCALES



www.ricelake.com | Phone: 800-472-6703

RICE LAKE

BenchMark® HDP

Portable Heavy Duty Bench Scale

Specifications

Load Cell, NTEP Certified:

IP67 aluminum, environmentally sealed

Output Impedance:

350 ohm

Maximum Overload:

200%

Overload Protection:

Five-point, independently adjusted

Scale Frame:

Mild steel powder coated black

Scale Cover:

AISI304L, straight line finish, Ra=45 +/- 10

Cable Length:

10 ft (3 m)

Compensated Temperature Range:

14° F to 104° F (-10° C to 40° C)

Warranty:

Two-year limited warranty

Approvals:

NTEP CC 06-010, Class III 5,000 d

Measurement Canada AM-5625, Class III 5,000 d



Ideal for aviation weighing. A complete system can be sold with the Tracer® AV2. Reference Aviation section for specifications.

Standard Features

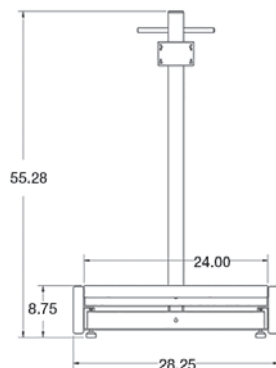
- Mild steel base construction
- 304 stainless steel cover
- Indicator stand for mounting 480/482 Legend™ Series
- Wheel model
- Polyurethane rubber leveling feet with stainless steel stems
- 8 in diameter preformed rubber wheels with ball bearings
- Caster model
- 3 1/2 in diameter preformed rubber casters, two fixed, two swivel with lock

APPROVALS

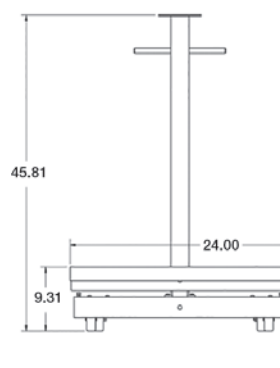
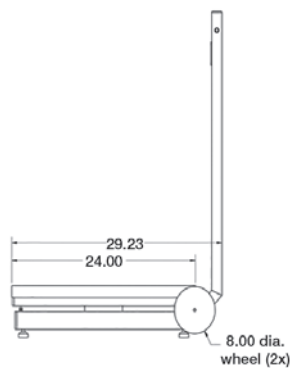


Part Number/Price

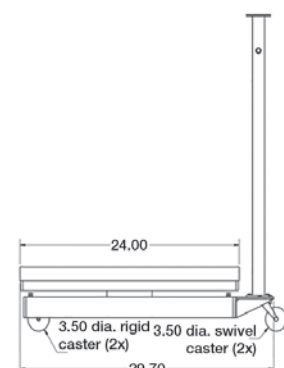
Part #	Capacity	Platform Dimensions	Est. Weight	Price
Wheel Model				
97072	250 lb (125 kg)	24 x 24 x 8.75 in	275 lb	\$2,495.00
97073	500 lb (225 kg)	24 x 24 x 8.75 in	275 lb	\$2,495.00
Caster Model				
97074	250 lb (125 kg)	24 x 24 x 9.31 in	290 lb	\$2,495.00
97075	500 lb (225 kg)	24 x 24 x 9.31 in	290 lb	\$2,495.00



Wheel Model



Caster Model



Ishida iPC Series

Portable Bench Scale

BENCH SCALES



Standard Features

- Six-digit liquid crystal display (LCD)
- Powered by two D cell batteries (up to 500 hours operation)
- Auto power-off function
- Low battery indicator
- Overload stops
- Batteries and AC adapter not included

APPROVALS



Part Number/Price

Part #	Capacity	Platform Dimensions	Est. Weight	Price
Single Display				
75466	100 oz	9.1 x 7.8 in	6 lb	\$295.00
Single Display, Multi-ranging				
75454	6 lb (3 kg)	9.1 x 7.8 in	6 lb	\$295.00
75455	15 lb (6 kg)	9.1 x 7.8 in	6 lb	\$295.00
75457	30 lb (15 kg)	11 x 11.5 in	8 lb	\$295.00
75458	60 lb (30 kg)	11 x 11.5 in	8 lb	\$295.00

Options/Accessories

Part #	Description	Price
75470	Stainless steel platter cover (100 oz, 6 lb, and 15 lb capacity)	\$29.00
75739	Stainless steel platter cover (30 lb and 60 lb capacity)	\$29.00
75473 *	AC adapter	\$30.00

*National Recognized Test Laboratory certified adapter

Dimensions

A	9.3 in (236.2 mm)	F	11.3 in (287 mm)
B	9.1 in (231.1 mm)	G	11 in (279.4 mm)
C	7.8 in (198.1 mm)	H	11.5 in (292.1 mm)
D	11.1 in (281.9 mm)	I	14.3 in (363.2 mm)
E	3.9 in (99.1 mm)	J	4 in (101.6 mm)

Specifications

Display:

Six-digit (seven-segment), LCD
Character height: 1 in (25.4 mm)

Keyboard:

Zero, tare, on/off, unit (lb/kg)
NOTE: oz version only displays weight in oz

Power:

Two dry cell D type batteries* (up to 500 hours) or AC adapter
Auto power-off function (can be set to 60 min., 20 min., or off)

Divisions (Auto Ranging):

100 oz: 0.05 oz from 0–50 oz,
0.1 oz from 50–100 oz
6 lb (3 kg): 0.002 lb (0.001 kg) from 0–3 lb (0–1.5 kg), 0.005 lb (0.002 kg) from 3–6 lb (1.5–3 kg)
15 lb (6 kg): 0.005 lb (0.002 kg) from 0–6 lb (0–3 kg), 0.01 lb (0.005 kg) from 6–15 lb (3–6 kg)
30 lb (15 kg): 0.01 lb (0.005 kg) from 0–15 lb (0–7.5 kg), 0.02 lb (0.01 kg) from 15–30 lb (7.5–15 kg)
60 lb (30 kg): 0.02 lb (0.01 kg) from 0–30 lb (0–15 kg), 0.05 lb (0.02 kg) from 30–60 lb (15–30 kg)

Operational Temperature:

23° F to 104° F (-5° C to 40° C)

Platter Size:

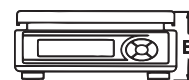
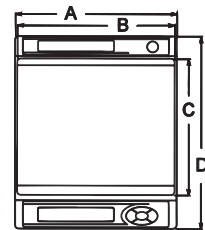
100 oz (3 kg): 9.1 x 7.8 in (231 x 198.1 mm)
6 lb (3 kg): 9.1 x 7.8 in (231 x 198.1 mm)
15 lb (6 kg): 9.1 x 7.8 in (231 x 198.1 mm)
30 lb (15 kg): 11 x 11.5 in (279.4 x 292.1 mm)
60 lb (30 kg): 11 x 11.5 in (279.4 x 292.1 mm)

Warranty:

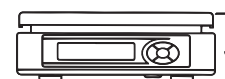
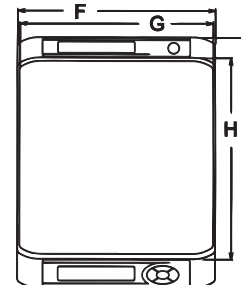
One-year limited warranty

Approvals:

NTEP Certified CC 02-139, Class III
0-30 lb 1,500 d; 60 lb 1,200 d; 0-100 oz 1000 d
UL listed



iPC 9.1" x 7.8" platter



iPC 11" x 11.5" platter

www.ricelake.com | Phone: 800-472-6703

RICELAKE

Specifications

Display:

LED, six-digit

Capacity:

Pound	Gram	Ounce
6.0 lb x 0.002 lb	3,000 g x 1 g	60.0 oz x 0.02 oz
15.0 lb x 0.005 lb	6,000 x 2 g	150.0 oz x 0.05 oz
30.0 lb x 0.01 lb	15,000 g x 5 g	300.0 oz x 0.1 oz
60.0 lb x 0.02 lb	30,000 g x 10 g	600.0 oz x 0.2 oz

Display Indicators:

Ounces, grams, pounds, net, center of zero, battery usage

Keyboard:

Rezero, tare, on/off, unit

Resolution:

Display resolution 1/3,000
Internal resolution 1/90,000

Operating Humidity:

15 ~ 85% RH

Operating Temperature:

14° F to 104° F (-10°C to +40°C)

Power Consumption:

18 W when using DC power, 3 W when using rechargeable battery
Battery life: 60 hours of continuous usage

Power Source:

AC 117/100 V, 240/230/220 V
DC 12 V/1.5A, DC 6 V 5Ah optional rechargeable battery

Calibration:

RLP-S: Grams

Dimensions: Overall:

(W x D x H): 9.9 x 11.4 x 5.3 in
(251.6 x 289.7 x 134.6 mm)

Package Size:

(W x D x H): 14.8 x 13.3 x 9.6 in
(377 x 337 x 245 mm)

Platter Size:

9.3 x 7.8 in (237.2 x 198.0 mm)

Approximate Weight:

15 lb (6.3 kg)

Warranty:

One-year limited warranty

Approvals:

NTEP CC 10-068, Class III 3,000 d
Measurement Canada AM-5794, Class III 3,000d



Standard Features

- Compact and easy to use
- IP68 water and dust resistant
- Stainless steel finish
- Removable weigh pan for quick and easy cleaning
- LED display
- AC adapter included
- Legal for Trade
- HACCP compliant

APPROVALS



Optional Features:

- Rechargeable battery

Part Number/Price

Part #	Description	Capacity	Est. Weight	Price
115125	RLP-6S	6.00 x 0.002 lb	15 lb (6.3 kg)	\$420.00
115128	RLP-15S	15.00 x 0.005 lb	15 lb (6.3 kg)	\$420.00
115129	RLP-30S	30.00 x 0.01 lb	15 lb (6.3 kg)	\$420.00
115130	RLP-60S	60.00 x 0.02 lb	15 lb (6.3 kg)	\$420.00

Options/Accessories

Part #	Description	Price
108516	Rechargeable battery	\$46.00
108518	AC adapter 110-230 VAC, U.S. plug	\$46.00
129953	AC adapter, 110-230 VAC, Euro plug	\$51.00
115519	Additional operator guide	\$10.00

Ishida IGX Series



Specifications

Capacity:

150 lb/60 kg x .05 lb/0.02 kg
300 lb/150 kg x .1 lb/0.05 kg

Accuracy:

Configurable 1/3,000**, 1/6,000, 1/7,500
**Legal for Trade setting

Display:

Vacuum fluorescent display (VFD), 25 mm

Display Items:

Weight: five-digits, center of zero, tare, checkweighing: over "H," under "L"

Electrical Power:

120 V

Operating Temperature:

23° F to 109° F (-5° C to 40° C)

Warranty:

One-year limited warranty

Approvals:

NTEP CC 05-020, Class III, 3,000 d

Standard Features

- Ability to toggle between lb and kg
- Stainless steel cover with die-cast base
- Checkweighing function
- Configurable display resolution: 1/3,000, 1/6,000, 1/7,500 (NOTE: Legal for Trade setting is 1/3,000)
- 10 PLUs for storing tare, upper limit, lower limit
- Display: VFD
- Power: 120 VAC
- Internal buzzer

APPROVALS

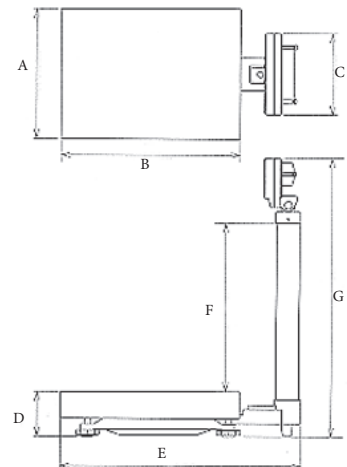


Part Number/Price

Part #	Capacity	Platform Dimensions	Est. Weight	Price
84989	150 lb (60 kg) x 0.05 lb (0.02 kg)	15.75 x 21.65 x 5.43 in	43 lb	\$995.00
84990	300 lb (150 kg) x 0.1 lb (0.05 kg)	15.75 x 21.65 x 5.43 in	43 lb	\$995.00

Drawing Dimensions

A	15.75 in (400 mm)	E	29.06 in (738 mm)
B	21.65 in (550 mm)	F	22.00 in (560 mm)
C	9.84 in (250 mm)	G	33.70 in (856 mm)
D	5.43 in (138 mm)		



Specifications

Dynamic Response:

Response time for stable weight:
 0 - 1,000d, 1,000 ms, maximum mean average
 1,000d +, 1,500 ms, maximum mean average

Internal Resolution:

500,000 internal count minimum

Overload Protection:

Corner & center overload protection

Power:

In-line power supply (included)
 Input: 100-240 VAC, +10% -15%, 3-wire w/ground
 Standard terminated with USA 3-prong plug
 Output: 12 V at .1 Amps DC minimum
 Frequency: 50/60 Hz +/-3 Hz, standard
 Power supply approvals: UL, CE, EN, CUL
 Battery type: Four AA alkaline batteries, 6 V, with
 low battery indication at 4.3 volts (not included)
 Battery life:
 50-250 hrs depending on backlight
 and auto-shutdown settings

USB HID:

USB 2.0 full speed; Vendor ID: 1C19;
 Product ID: 0002

Divisions (multi-range):

Kg triple range
 0-5 kg x 0.001 kg
 0-10 kg x 0.002 kg
 0-35 kg x 0.01 kg
 Lb/oz dual range
 0-7 lb x 0.05 oz
 0-70 lb x 0.2 oz

Divisions (multi-interval) :

Kg triple interval
 0-5 kg x 0.001 kg
 5-10 kg x 0.002 kg
 10-35 kg x 0.01 kg
 Lb/oz dual interval
 0-7 lb x 0.05 oz
 7-70 lb x 0.2 oz

Construction:

Die-cast aluminum load bridge and base housing
 with stainless steel weight platter

Display:

Minimum key press life of 500,000 cycles
 ABS plastic housing
 6 annunciators to indicate zero, gross/brutto, net,
 W1/W2/W3 multi-range
 3 buttons: units, on/off, F1 (Tare is not applicable)

RS-232 Cable (included):

10 ft DB 9-pin male to female, straight pass through

USB Cable (included):

46 in (1,168.4 mm) A/B type USB cable

Approvals:

NTEP COC # 17-002
 Canada Weights and Measures: AM - 6050
 CE Marked

Warranty:

Two-year limited warranty



Standard Features

- Simple operation, easy to set up
- Large six-digit backlight LCD display with 1 in (29 mm) characters protected by heavy duty tempered glass
- Powered USB HID point of sale interface – kg model only
- Nine-pin RS-232 interface for use with SMA and NCI protocols
- Four AA alkaline battery operation for portability
- Gravitational compensation allows for adjustment of factory calibration to meet your local gravity setting, non-approved

APPROVALS



BenchPro™ BP-P

Postal Bench Scale

Part Number/Price

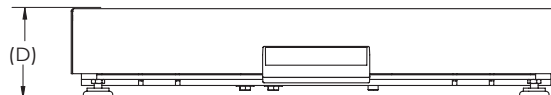
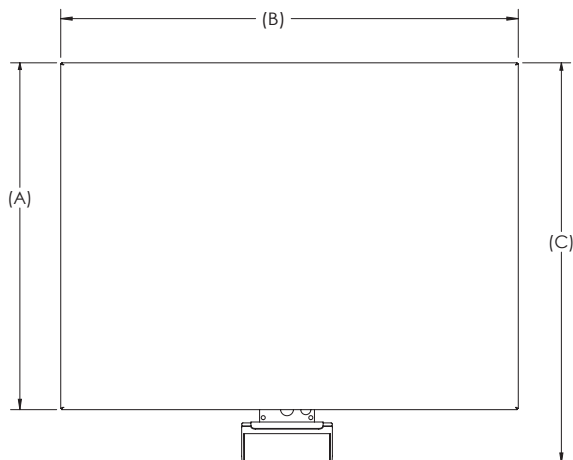
Part #	Platform Capacity	Dimensions	Est. Weight	Price
187832	35 kg triple range	12 x 14 in	18 lb	\$625.00
195741	35 kg triple interval	12 x 14 in	18 lb	\$625.00
192361	70 lb dual range	12 x 14 in	18 lb	\$625.00
195742	70 lb dual interval	12 x 14 in	18 lb	\$625.00

Options/Accessories

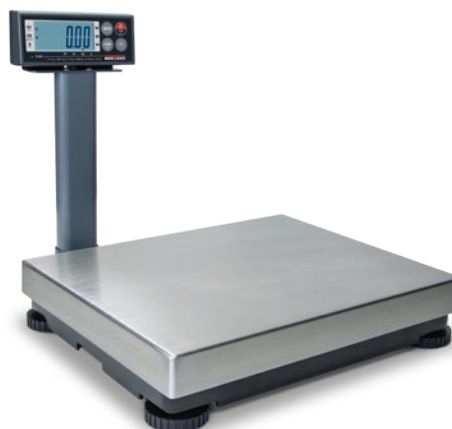
Part #	Description	Est. Weight	Price
174783	Column bracket and post (12 x 14 scale only)	2 lb	\$50.00
180901	Second customer display, BenchPro BP-P no keyboard with 68 in cable	4 lb	\$72.00
174784	Second remote operator display, BenchPro BP-P with 68 in cable	4 lb	\$88.00
183103	16 in (H) tabletop display post for use with second display, customer or remote operator	4 lb	\$215.00
178501	USB-RS-232 serial adapter 3.28 ft cable	1 lb	\$50.00

Dimensions - Inches

	A	B	C	D
12 x 14	12	14	14.5	2.70



BP-P shown with 183103 and 180901



Shown with 174783

Specifications

Dynamic Response:

Response time for stable weight:
0 - 1,000d, 1,000 ms, maximum mean average
1,000d +, 1,500 ms, maximum mean average

Internal Resolution:

500,000 internal count minimum

Overload Protection:

Corner & center overload protection

Power:

In-line power supply (included)
Input: 100-240 VAC, +10% -15%, 3-wire w/ground
Standard terminated with USA 3-prong plug
Output: 12V at .1 Amps DC minimum
Frequency: 50/60 Hz +/-3 Hz, standard
Approvals: UL, CE, EN, CUL

Battery Power (BP-S 12 x 14 scale only):

Battery type: Four AA alkaline batteries, 6 V, with
low battery indication at 4.3 volts (not included)
Battery life: 50-250 hrs depending on backlight and
auto-shutdown settings

USB HID:

USB 2.0 full speed; Vendor ID: 1C19;
Product ID: 0002

Construction:

Powder coat painted mild steel base plate and load
bridge with stainless steel weight platter
BP-S 12 x 14 scale, die-cast aluminum load bridge
and base housing with stainless steel weight platter

Display:

Minimum key press life of 500,000 cycles,
ABS plastic housing
6 annunciators to indicate Zero, Gross/Brutto, Net,
W1/W2/W3 multi-range
4 buttons: Units, Tare, On/Off, F1

RS-232 Cable (included):

10 ft DB 9-pin male to female, straight pass through

USB Cable (included):

46 in (1168.4 mm) A/B type USB cable

Approvals:

NTEP COC # 17-002
Canada Weights and Measures: AM - 6050
CE Marked

Warranty:

Two-year limited warranty



Standard Features

- Simple operation, easy to set up
- Large six-digit backlight LCD display with 1 in (29 mm) characters protected by heavy duty tempered glass
- Powered USB HID point of sale interface – kg model only
- Plug and play USB interface provides power and communications to popular shipping software programs like FedEx Ship Manager and UPS Worldship
- Nine-pin RS-232 interface for use with SMA and NCI protocols
- Four AA alkaline battery operation for portability
- Gravitational compensation allows for adjustment of factory calibration to meet your local gravity setting, non-approved
- Compatible with FedEx Ship Manager® and UPS Worldship®

APPROVALS



BP-S 12 x 14in

BenchPro™ BP-S

Shipping Bench Scale

Part Number/Price

Part #	Platform Capacity	Dimensions	Est. Weight	Price
174879 *	150 x 0.05 lb (75 x 0.02 kg)	12 x 14 in	17 lb	\$625.00
182993	150 x 0.05 lb (75 x 0.02 kg)	12 x 16 in	31 lb	\$1,135.00
182391	100 x 0.02 lb (50 x 0.01 kg)	18 x 18 in	63 lb	\$1,205.00
182378	150 x 0.05 lb (75 x 0.02 kg)	18 x 18 in	63 lb	\$1,490.00
182382	300 x 0.1 lb (150 x 0.05 kg)	18 x 18 in	63 lb	\$1,490.00
182395	300 x 0.1 lb (150 x 0.05 kg)	20 x 20 in	76 lb	\$1,670.00
182399	300 x 0.1 lb (150 x 0.05 kg)	24 x 24 in	131 lb	\$1,840.00

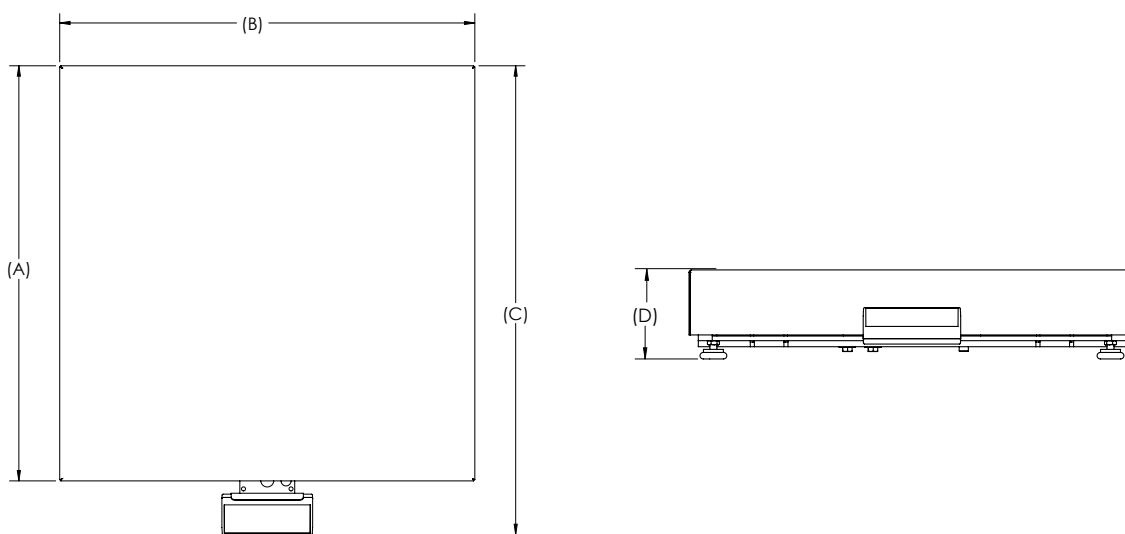
* Battery or DC power

Options/Accessories

Part #	Description	Est. Weight	Price
174783	Column bracket and post (12 x 14 scale only)	2 lb	\$50.00
180901	Second customer display, BenchPro BP-S no keyboard with 68 in cable	4 lb	\$72.00
174784	Second remote operator display, BenchPro BP-S with 68 in cable	4 lb	\$88.00
183103	16 in (H) tabletop display post for use with second display, customer or remote operator	4 lb	\$215.00
178501	USB-RS-232 serial adapter	1 lb	\$50.00

Dimensions - Inches

	A	B	C	D
12 x 14	12	14	14.5	2.70
12 x 16	12	16	15.30	4.32
18 x 18	18	18	21.10	4.30
20 x 20	20	20	23.10	4.30
24 x 24	24	24	27.10	4.30



BenchPro™ BP-SB

Shipping Bench Scale with Ball Top Shroud

Specifications

Dynamic Response:

Response time for stable weight:
0 - 1,000 d, 1,000 ms, maximum mean average
1,000 d +, 1,500 ms, maximum mean average

Internal Resolution:

500,000 internal count minimum

Overload Protection:

Corner & center overload protection

Power:

In-line power supply (included)
Input: 100-240 VAC, +10% -15%, 3-wire w/ground
Standard terminated with USA 3-prong plug
Output: 12V at .1 Amps DC minimum
Frequency: 50/60 Hz +/-3 Hz, standard
Approvals: UL, CE, EN, CUL

USB HID:

USB 2.0 full speed; Vendor ID: 1C19;
Product ID: 0002

Construction:

Powder coat painted mild steel base plate and load
bridge. Carbon steel ball with carbon steel zinc-
plated housing. Stainless steel shroud.

Display:

Minimum key press life of 500,000 cycles,
ABS plastic housing
6 annunciators to indicate Zero, Gross/Brutto, Net,
W1/W2/W3 multi-range
4 buttons: Units, Tare, On/Off, F1

RS-232 Cable (included):

10 ft DB 9-pin male to female, straight pass through

USB Cable (included):

46 in (1168.4 mm) A/B type USB cable

Approvals:

NTEP COC # 17-002
Canada Weights and Measures: AM - 6050
CE Marked

Warranty:

Two-year limited warranty



Standard Features

- Simple operation, easy to set up
- Large six-digit backlight LCD display with 1 in (29 mm) characters protected by heavy duty tempered glass
- Powered USB HID point of sale interface – kg model only
- Nine-pin RS-232 interface for use with SMA and NCI protocols
- Four AA alkaline battery operation for portability
- Gravitational compensation allows for adjustment of factory calibration to meet your local gravity setting, non-approved
- Compatible with FedEx Ship Manager® and UPS Worldship®

APPROVALS



BenchPro™ BP-SB

Shipping Bench Scale with Ball Top Shroud

Part Number/Price

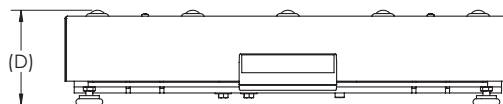
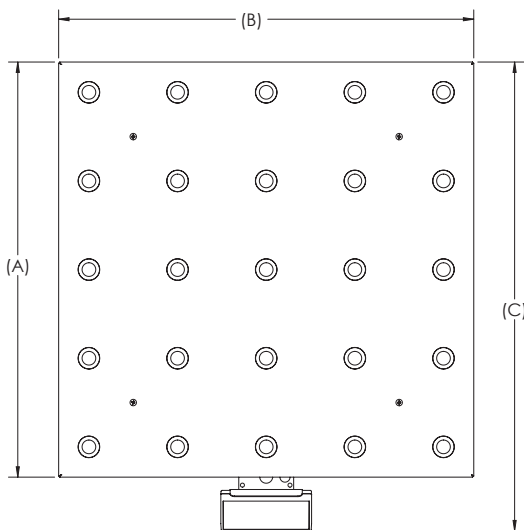
Part #	Capacity	Dimensions	Est. Weight	Price
182995	150 x 0.05 lb (75 x 0.02 kg)	12 x 16 in	37 lb	\$1,365.00
182393	100 x 0.02 lb (50 x 0.01 kg)	18 x 18 in	73 lb	\$1,590.00
182380	150 x 0.05 lb (75 x 0.02 kg)	18 x 18 in	73 lb	\$1,835.00
182384	300 x 0.1 lb (150 x 0.05 kg)	18 x 18 in	73 lb	\$1,835.00
182397	300 x 0.1 lb (150 x 0.05 kg)	20 x 20 in	88 lb	\$2,035.00
182401	300 x 0.1 lb (150 x 0.05 kg)	24 x 24 in	131 lb	\$2,240.00

Options/Accessories

Part #	Description	Est. Weight	Price
180901	Second customer display, BenchPro BP-SB no keyboard with 68 in cable	4 lb	\$72.00
174784	Second remote operator display, BenchPro BP-SB with 68 in cable	4 lb	\$88.00
183103	16 in (H) tabletop display post for use with second display, customer or remote operator	4 lb	\$215.00
178501	USB-RS-232 serial adapter	1 lb	\$50.00

Dimensions - Inches

	A	B	C	D
12 x 16	12	16	15.30	4.32
18 x 18	18	18	21.10	4.86
20 x 20	20	20	23.10	4.86
24 x 24	24	24	27.10	4.86



BenchPro™ BP-SR

Shipping Bench Scale with Roller Conveyor

Specifications

Dynamic Response:

Response time for stable weight:
0 - 1,000 d, 1,000 ms, maximum mean average
1,000 d +, 1,500 ms, maximum mean average

Internal Resolution:

500,000 internal count minimum

Overload Protection:

Corner & center overload protection

Power:

In-line power supply (included)
Input: 100-240 VAC, +10% -15%, 3-wire w/ground
Standard terminated with USA 3-prong plug
Output: 12V at .1 Amps DC minimum
Frequency: 50/60 Hz +/-3 Hz, standard
Approvals: UL, CE, EN, CUL

USB HID:

USB 2.0 full speed; Vendor ID: 1C19;
Product ID: 0002

Construction:

Powder coat painted mild steel base plate and load
bridge with stainless steel roller conveyor

Display:

Minimum key press life of 500,000 cycles,
ABS plastic housing
6 annunciators to indicate Zero, Gross/Brutto, Net,
W1/W2/W3 multi-range
4 buttons: Units, Tare, On/Off, F1

RS-232 Cable (included):

10 ft DB 9-pin male to female, straight pass through

USB Cable (included):

46 in (1,168.4 mm) A/B type USB cable

Approvals:

NTEP COC # 17-002
Canada Weights and Measures: AM - 6050
CE Marked

Warranty:

Two-year limited warranty



Standard Features

- Simple operation, easy to set up
- Large six-digit backlight LCD display with 1 in (29 mm) characters protected by heavy duty tempered glass
- Powered USB HID point of sale interface – kg model only
- Nine-pin RS-232 interface for use with SMA and NCI protocols
- Four AA alkaline battery operation for portability
- Gravitational compensation allows for adjustment of factory calibration to meet your local gravity setting, non-approved
- Compatible with FedEx Ship Manager® and UPS Worldship®

APPROVALS



BenchPro™ BP-SR

Shipping Bench Scale with Roller Conveyor

Part Number/Price

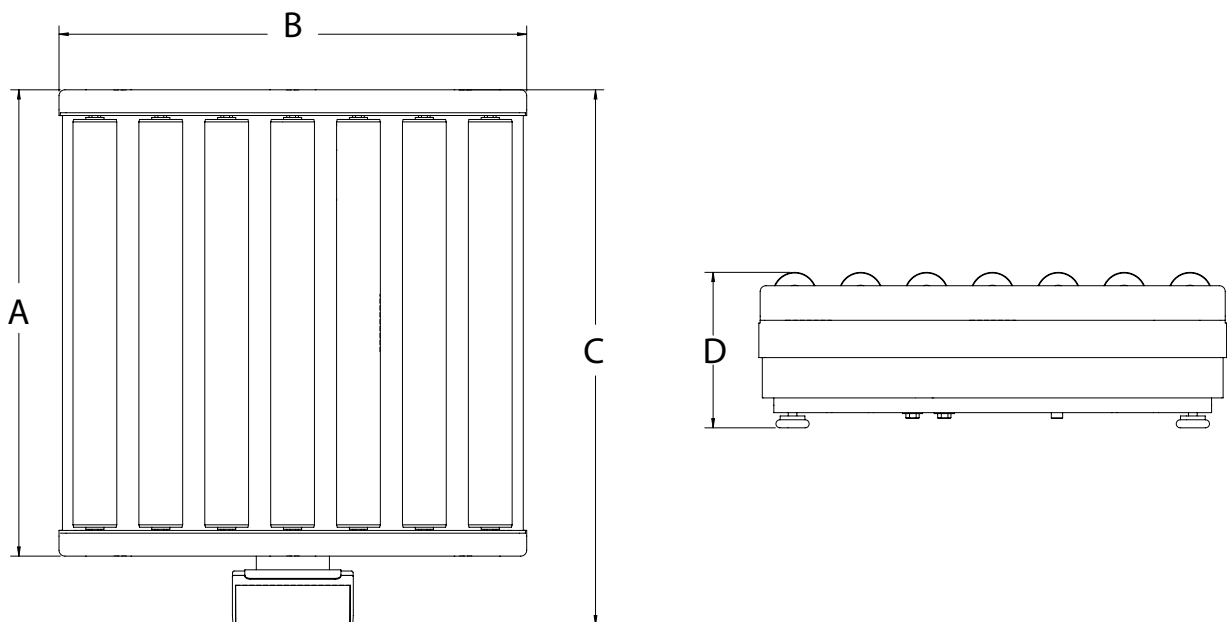
Part #	Platform Capacity	Dimensions	Est. Weight	Price
182996	150 x 0.05 lb (75 x 0.02 kg)	12 x 16 in	41 lb	\$1,290.00
182394	100 x 0.02 lb (50 x 0.01 kg)	18 x 18 in	77 lb	\$1,590.00
182381	150 x 0.05 lb (75 x 0.02 kg)	18 x 18 in	77 lb	\$1,650.00
182386	300 x 0.1 lb (150 x 0.05 kg)	18 x 18 in	77 lb	\$1,650.00
182398	300 x 0.1 lb (150 x 0.05 kg)	20 x 20 in	94 lb	\$1,930.00
182402	300 x 0.1 lb (150 x 0.05 kg)	24 x 24 in	131 lb	\$2,130.00

Options/Accessories

Part #	Description	Est. Weight	Price
180901	Second customer display, BenchPro BP-SR no keyboard with 68 in cable	4 lb	\$72.00
174784	Second remote operator display, BenchPro BP-SR with 68 in cable	4 lb	\$88.00
183103	16 in (H) tabletop display post for use with second display, customer or remote operator	4 lb	\$215.00
178501	USB-RS-232 serial adapter	1 lb	\$50.00

Dimensions - Inches

	A	B	C	D
12 x 16	12	16	15.30	5.95
18 x 18	18	18	21.10	6.50
20 x 20	20	20	23.10	6.50
24 x 24	24	24	27.10	6.50



BenchMark® MSC-10

Mobile Scale Cart

Specifications

Capacity:

1,000 lb/500 kg maximum capacity

Warranty:

One-year limited warranty



Standard Features

- 2 swivel, locking casters and 2 rigid casters
- Adjustable height with telescoping tube designed legs
- 18 in indicator stand for mounting CW90/90X, 480/480 Plus, 482/482 Plus, 380 Synergy, 680 Synergy

Part Number/Price

Part #	Description	Cart Dimensions (L x W x H)	Est. Weight	Price
Mild Steel				
190201	Designed for 12 x 18 Benchmark mild steel series	25 x 14 x 41.89-51.89 in (22.78-32.78 in*)	70 lb	\$1,275.00
190202	Designed for 18 x 18 Benchmark mild steel series	25 x 20 x 41.89-51.89 in (22.78-32.78 in*)	83 lb	\$1,305.00
190203	Designed for 18 x 24 Benchmark mild steel series	31 x 20 x 41.89-51.89 in (22.78-32.78 in*)	93 lb	\$1,335.00
190204	Designed for 24 x 24 Benchmark mild steel series	31 x 26 x 41.89-51.89 in (22.78-32.78 in*)	101 lb	\$1,365.00
Stainless Steel				
190205	Designed for 12 x 18 Benchmark stainless steel and HE series	25 x 14 x 41.89-51.89 in (22.78-32.78 in*)	70 lb	\$1,595.00
190206	Designed for 18 x 18 Stainless steel and HE series	25 x 20 x 41.89-51.89 in (22.78-32.78 in*)	83 lb	\$1,640.00
190207	Designed for 18 x 24 Stainless steel and HE series	31 x 20 x 41.89-51.89 in (22.78-32.78 in*)	93 lb	\$1,685.00
190209	Designed for 24 x 24 Stainless steel and HE series	31 x 26 x 41.89-51.89 in (22.78-32.78 in*)	101 lb	\$1,730.00

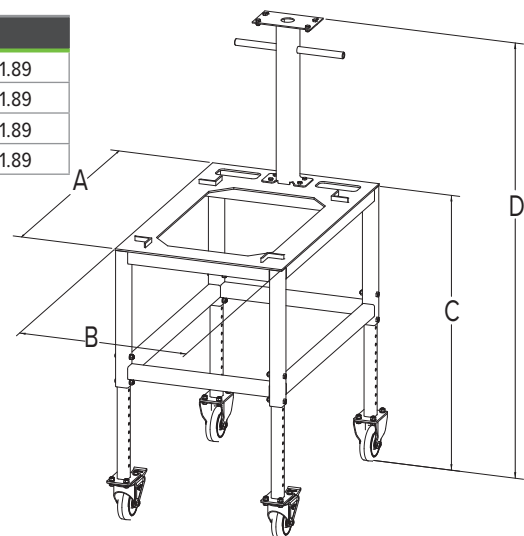
*Height of cart without indicator stand

Wheels on standard carts are not conductive. If the end user plans to use the cart with an IS indicator, they will need a custom cart quoted with conductive wheels.

Cart not compatible with HE-X. See MSC-40.

Dimensions - Inches

	A	B	C	D
Designed for 12 x 18 scale	25	14	22.78-32.78	41.89-51.89
Designed for 18 x 18 scale	25	20	22.78-32.78	41.89-51.89
Designed for 18 x 24 scale	31	20	22.78-32.78	41.89-51.89
Designed for 24 x 24 scale	31	26	22.78-32.78	41.89-51.89



BenchMark® MSC-20

Mobile Scale Cart



Specifications

Capacity:

Lower base frame 1,000 lb/500 kg maximum capacity
Upper base frame 50 lb/25 kg maximum capacity

Warranty:

One-year limited warranty

Standard Features

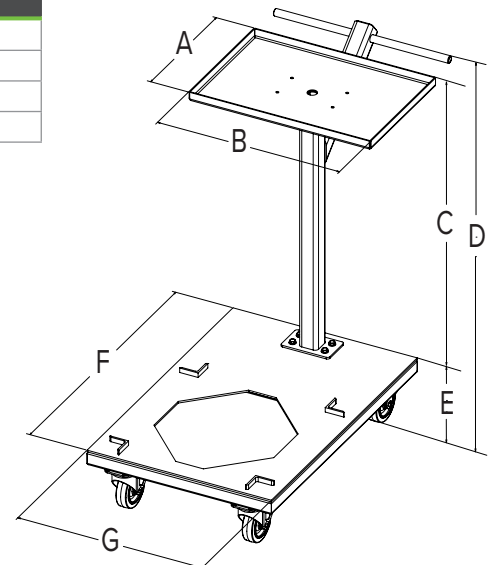
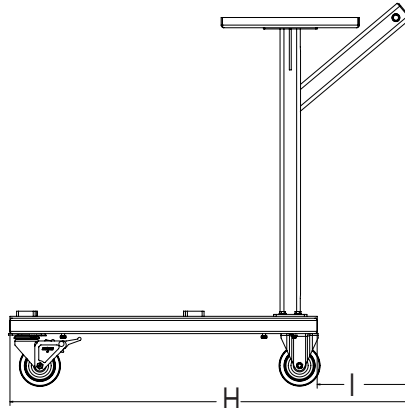
- 2 swivel, locking casters and 2 rigid casters
- Designed to easily transport counting scale and secondary scale

Part Number/Price

Part #	Description	Est. Weight	Price
Mild Steel			
197502	Designed for 12 x 18 Benchmark Mild Steel scale	85	\$1,360.00
197503	Designed for 18 x 18 Benchmark Mild Steel scale	85	\$1,380.00
197504	Designed for 18 x 24 Benchmark Mild Steel scale	88	\$1,405.00
197505	Designed for 24 x 24 Benchmark Mild Steel scale	96	\$1,425.00
Stainless Steel			
197506	Designed for 12 x 18 Benchmark SST and Benchmark HE scale	90	\$1,930.00
197507	Designed for 18 x 18 Benchmark SST and Benchmark HE scale	90	\$1,950.00
197508	Designed for 18 x 24 Benchmark SST and Benchmark HE scale	93	\$1,970.00
197509	Designed for 24 x 24 Benchmark SST and Benchmark HE scale	101	\$2,000.00

Dimensions - Inches

	A	B	C	D	E	F	G	H	I
Designed for 12 x 18 scale	19.50	13.25	29.18	36	6.81	30	20	39	9
Designed for 18 x 18 scale	19.50	13.25	29.18	36	6.81	30	20	39	9
Designed for 18 x 24 scale	19.50	13.25	29.18	36	6.81	35	20	44	9
Designed for 24 x 24 scale	19.50	13.25	29.18	36	6.81	35	26	44	9



BenchMark® MSC-30

Mobile Scale Cart

Specifications

Capacity:
1,000 lb/500 kg maximum capacity

Warranty:
One-year limited warranty



Standard Features

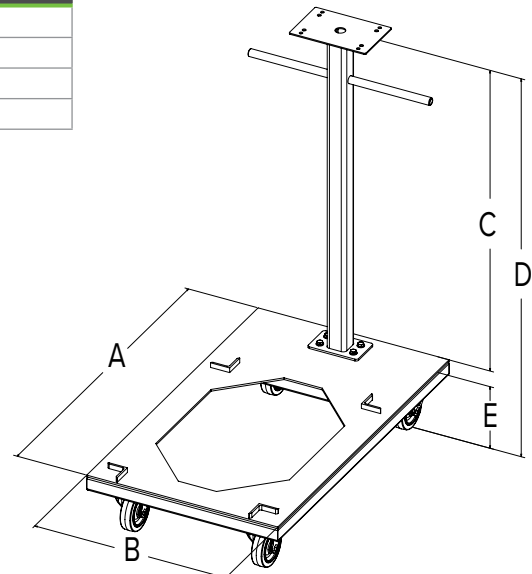
- 2 swivel, locking casters and 2 rigid casters
- Indicator stand for mounting CW90/90X, 480/480Plus, 482/482Plus, 380 Synergy, 680 Synergy

Part Number/Price

Part #	Description	Est. Weight	Price
Mild Steel			
197510	Designed for 12 x 18 Benchmark Mild Steel scale	67	\$1,360.00
197511	Designed for 18 x 18 Benchmark Mild Steel scale	67	\$1,380.00
197512	Designed for 18 x 24 Benchmark Mild Steel scale	70	\$1,405.00
197513	Designed for 24 x 24 Benchmark Mild Steel scale	78	\$1,425.00
Stainless Steel			
197514	Designed for 12 x 18 Benchmark SST and Benchmark HE scale	72	\$1,930.00
197515	Designed for 18 x 18 Benchmark SST and Benchmark HE scale	72	\$1,950.00
197516	Designed for 18 x 24 Benchmark SST and Benchmark HE scale	75	\$1,970.00
197517	Designed for 24 x 24 Benchmark SST and Benchmark HE scale	83	\$2,000.00

Dimensions - Inches

	A	B	C	D	E
Designed for 12 x 18 scale	30	20	34.25	41	6.81
Designed for 18 x 18 scale	30	20	34.25	41	6.81
Designed for 18 x 24 scale	35	20	34.25	41	6.81
Designed for 24 x 24 scale	35	26	34.25	41	6.81



BenchMark® MSC-40

Mobile Scale Cart



Specifications

- Capacity:**
1,000 lb/500 kg maximum capacity
- Warranty:**
One-year limited warranty

Standard Features

- 2 swivel, locking casters and 2 rigid casters
- Rugged washdown design meets Sanitary Design Principles

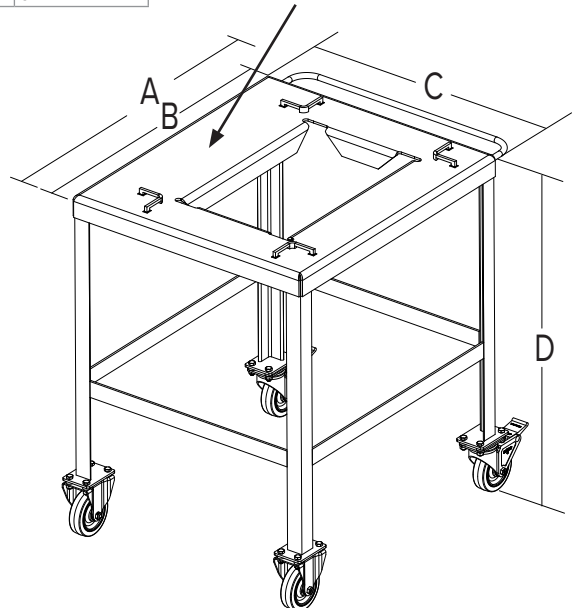
Part Number/Price

Part #	Description	Est. Weight	Price
Stainless Steel			
197518	Designed for 12 x 18 Benchmark HE-X scale	62 lb	\$1,795.00
197519	Designed for 18 x 18 Benchmark HE-X scale	62 lb	\$1,895.00
197520	Designed for 18 x 24 Benchmark HE-X scale	69 lb	\$1,995.00
197521	Designed for 24 x 24 Benchmark HE-X scale	79 lb	\$2,095.00

Dimensions - Inches

	A	B	C	D
Designed for 12 x 18 scale	24.75	21	17.875	32
Designed for 18 x 18 scale	24.75	21	24	32
Designed for 18 x 24 scale	30.75	27	24	32
Designed for 24 x 24 scale	30.75	27	30	32

Note: This side of cart is larger to accommodate BenchMark HE-X with indicator column



Bench Scale Ball Transfer and Roller Conveyor

1. Rice Lake Weighing Systems model number or part number of bench scale _____
2. Dimensions of scale: _____ " L x _____ " W
3. Capacity of scale: _____ lb
4. Dimensions of the smallest box/container to be used with the scale: _____ " L x _____ " W

Ball Transfer

5. Construction of Ball Transfer

- Steel Ball, Steel Housing Zinc Finish
- Stainless Steel Ball, Steel Housing Zinc Finish
- Stainless Steel Ball, Stainless Steel Housing

6. Center to center ball dimension, if known:



Ball Transfer with Shroud

5. Construction of Ball Transfer

- Steel Ball, Steel Housing Zinc Finish
- Stainless Steel Ball, Stainless Steel Housing

6. Center to center ball dimension, if known:



Roller Conveyor

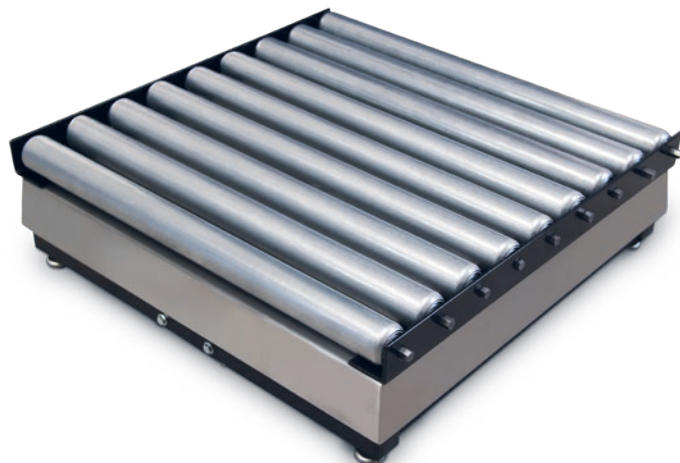
8. Roller Diameter, if known:

9. Center-to-Center Dimension, if known:

10. Construction of Rollers

- Plain Steel
- Galvanized Steel
- Aluminum
- Stainless Steel

7. Direction of roller conveyor, if platform is rectangular shaped (i.e. 18 in x 24 in scale, please tell us if the rollers should be 18" or 24" long)



Bench Scale Columns

Part Number/Price

Part #	Description	Price
112044	12 in column for IQ plus® 210, CW-90, CW-90X, 480/482 Legend Series, 380 Synergy Series, 680 Synergy Series	\$145.00
112045	18 in column for IQ plus® 210, CW-90, CW-90X, 480/482 Legend Series, 380 Synergy Series, 680 Synergy Series	\$195.00
196363	12 in column for 882IS/882IS Plus with battery	\$225.00
196364	18 in column for 882IS/882IS Plus with battery	\$275.00
197482	12 in column for 882IS/882IS Plus with power supply (Note: Power supply does not mount to column)	\$165.00
197484	18 in column for 882IS/882IS Plus with power supply (Note: Power supply does not mount to column)	\$215.00
64576	Attachment bracket for IQ plus® 210, CW-90, CW-90X, 480/482 Legend Series, 380 Synergy Series, 680 Synergy Series	\$100.00

Available for the BenchMark SL, BenchMark SL/HE, BenchMark Mild Steel, BenchMark Stainless Steel, BenchMark HE, BenchMark HE-X, CW-80B, CW-90B and CW90-XB



CW-90B with 480 indicator and 12in column



Base with 882IS/882IS Plus indicator with battery and 12in column



Attachment bracket with IQ Plus 2100