

### COMPRESSION CANISTERS

Page 192

#### C2P1, ALLOY STEEL



Single-column design with low deflection and trouble-free operation. High alloy steel and epoxy coated for use in harsh environments. Compact and rugged. NTEP Certified capacities range from 20,000 to 200,000 lb; non-NTEP Certified capacity of 300,000 lb. Complete with 10 or 35 ft of load cell cable.



Page 193

#### C3P1, ALLOY STEEL



Environmentally -protected, single-column design provides low deflection and trouble-free operation. Compact and rugged high-alloy steel. Epoxy coated for corrosion resistance. Capacities range from 500 lb to 10,000 lb. Complete with 35 ft of load cell cable.



### TENSION CANISTERS

Page 194

#### T2P1, ALLOY STEEL



Single-column, environmentally protected design provides low deflection and trouble-free operation. High-alloy steel and epoxy coated construction yields trouble-free performance in harsh environments. Designed for high-capacity tension applications. Capacities of 20,000 and 50,000 lb. Complete with 35 ft of load cell cable.



Page 195

#### T3P1, ALLOY STEEL



Features low deflection and trouble-free operation. Single-column, environmentally -protected design with high-alloy steel and epoxy -coated construction for optimal performance in harsh environments. Designed for high-capacity tension operations. Capacities of 20,000 lb and 50,000 lb. Complete with 35 ft of load cell cable.





Picture is a representation of actual product.

### Approvals

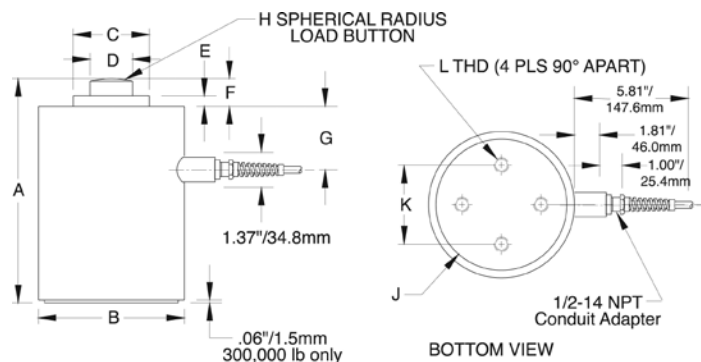


### Order Information

Load Rating	Part #	Est. Weight	Price
<b>NTEP Certified, 10 ft Cables</b>			
20,000 lb	<b>21625</b>	25 lb	\$3,595.00
50,000 lb	<b>21626</b>	25 lb	\$3,495.00
100,000 lb	<b>21627</b>	50 lb	\$3,695.00
200,000 lb	<b>21628</b>	110 lb	\$3,995.00
<b>NTEP Certified, 35 ft Cables</b>			
20,000 lb	<b>21630</b>	25 lb	\$3,695.00
50,000 lb	<b>21632</b>	25 lb	\$3,595.00
100,000 lb	<b>21633</b>	50 lb	\$3,795.00
200,000 lb	<b>21634</b>	110 lb	\$4,195.00
<b>Non-NTEP Certified, 10 ft Cables</b>			
300,000 lb	<b>17670</b>	180 lb	\$8,095.00
<b>Non-NTEP Certified, 35 ft Cables</b>			
300,000 lb	<b>17671</b>	190 lb	\$8,195.00

### Dimensions

Rated Capacity	A	B	C	D	E	F	G	H	J	K	L
lb/in											
20,000 to 50,000	7.50	4.50	2.25	1.25	0.50	0.75	2.50	6.00	—	2.38	3/8-24 UNF × 3/8 DP
100,000	9.13	6.00	3.13	1.75	0.63	1.06	2.50	12.00	—	4.00	1/2-20 UNF × 3/4 DP
200,000	11.63	8.00	4.50	2.50	0.63	1.06	3.50	12.00	—	5.50	5/8-18 UNF × 1 DP
300,000	14.00	10.00	5.00	3.00	0.75	1.31	4.31	15.00	8.00	5.50	3/4-16 UNF × 1 1/4 DP



### Interchangeable Products

FAIRBANKS®

**3-38065-X, 3-38066-X**

STREETER RICHARDSON®

**2011611, 2011612**

STREETER RICHARDSON

**2011613, 2011614,  
2011617**

METTLER TOLEDO®

**10049200A, 10014900A**

METTLER TOLEDO

**10011900A, 10049300A**

### Specifications

#### Full Scale Output:

2.0 mV/V

#### Output Resistance:

350 (± 3.5) ohm

#### Input Resistance:

350 (± 3.5) ohm

#### Material/Finish:

High-alloy steel, epoxy coated

#### Temperature:

Compensated range

14 °F to 104 °F (-10 °C to 40 °C)

Operating range

0 °F to 150 °F (-18 °C to 65 °C)

#### Seal Type:

NEMA Type 6 Environmentally sealed, IP67

#### Safe Overload:

150% full scale

#### Rated Excitation:

5 to 10 VDC (20 V maximum)

#### Nonlinearity:

0.03% full scale

#### Hysteresis:

0.02% full scale

#### Insulation Resistance:

5,000 megohm

#### Deflection at Capacity:

20,000 lb: 0.0075 in

30,000 lb: 0.0075 in

50,000 lb: 0.0065 in

100,000 lb: 0.0075 in

200,000 lb: 0.0070 in

300,000 lb: 0.012 in

#### Cable Length:

10 ft

35 ft

#### Cable Color Code:

Green +Excitation

Black -Excitation

White +Signal

Red -Signal

Yellow Shield

#### Warranty:

Three-year limited

#### Approvals:

NTEP

FM



Picture is a representation of actual product.

### Approvals



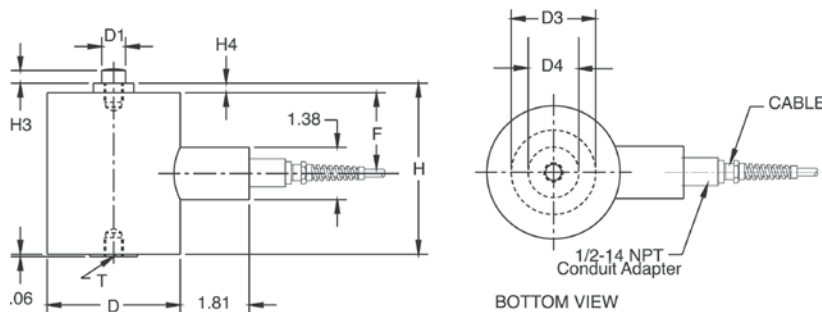
### Order Information

Load Rating	Part #	Est. Weight	Price
500 lb	17672	10 lb	\$3,595.00
1,000 lb	17673	10 lb	\$3,595.00
2,000 lb	17674	10 lb	\$3,595.00
3,000 lb	17675	10 lb	\$3,595.00
5,000 lb	17676	15 lb	\$3,695.00
10,000 lb	17677	15 lb	\$3,695.00

### Dimensions

Rated Capacity	D	D1	D3	D4	F	H	H3	H4	L	T
lb/in										
500 to 3,000	3.50	0.62	1.25	—	2.25	4.56	0.38	0.25	—	1/2-20 UNF × 0.50 DP
5,000 to 10,000	3.50	1.06	2.50	1.75	2.66	5.94	0.62	0.38	0.50	1-14 UNS × 1.25 DP

HOLES CAN BE DRILLED WITHIN THIS AREA TO RECEIVE LOCKING SCREWS. MAX. DEPTH OF HOLES IS "L" DIM.



### Interchangeable Products

FAIRBANKS®

**3-38054-X**

METTLER TOLEDO®

**1004400A, KN713700**

METTLER TOLEDO

**KB200570, 10049100A**

### Specifications

#### Full Scale Output:

3.0 mV/V

#### Output Resistance:

350 (± 3.5) ohm

#### Input Resistance:

350 (± 3.5) ohm

#### Material/Finish:

High-alloy steel, epoxy coated

#### Temperature:

Operating range  
0 °F to 150 °F (-18 °C to 65 °C)

#### Seal Type:

NEMA Type 6 Environmentally sealed, IP67

#### Safe Overload:

150% full scale

#### Rated Excitation:

5 to 10 VDC (20 V maximum)

#### Nonlinearity:

0.05% full scale

#### Hysteresis:

500 lb: 0.05% full scale  
1,000 to 10,000 lb: 0.02% full scale

#### Insulation Resistance:

5,000 megohm

#### Deflection at Capacity:

500 lb: 0.007 in  
1,000 lb: 0.006 in  
2,000 lb: 0.005 in  
3,000 lb: 0.005 in  
5,000 lb: 0.007 in  
10,000 lb: 0.005 in

#### Cable Length:

35 ft

#### Cable Color Code:

Green +Excitation  
Black -Excitation  
White +Signal  
Red -Signal  
Yellow Shield

#### Warranty:

Three-year limited

#### Approvals:

FM



Picture is a representation of actual product.

Approvals

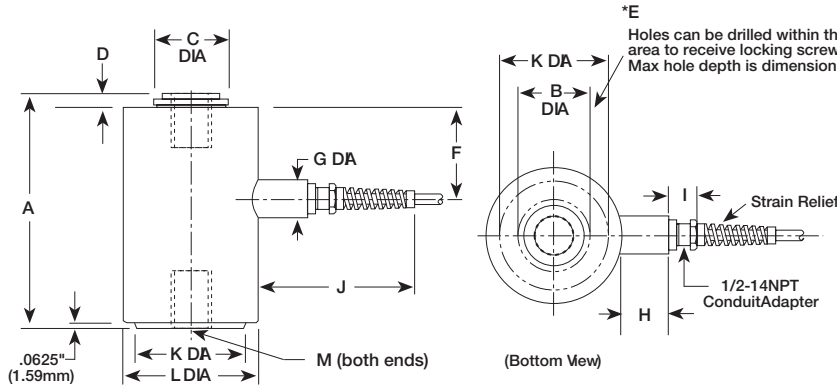


Order Information

Load Rating	Part #	Est. Weight	Price
20,000 lb	17660	30 lb	\$3,695.00
50,000 lb	17661	65 lb	\$3,895.00

Dimensions

Rated Capacity	A	B	C	D	E	F	G	H	I	J	K	L	M
lb/in													
20,000	8.50	2.63	2.75	0.50	1.00	3.38	1.38	1.81	1.00	5.81	4.00	5.00	1 1/2-12 UNF x 2 DP
50,000	11.44	3.75	4.00	0.63	1.00	5.00	1.38	1.81	1.00	5.81	5.75	6.50	2-12 UNF x 2.63 DP



Interchangeable Products

FAIRBANKS®  
657090, 657091  
STREETER RICHARDSON®  
2011711, 2011712

Specifications

**Full Scale Output:**  
2.0 mV/V

**Output Resistance:**  
350 (± 3.5) ohm

**Input Resistance:**  
350 (± 3.5) ohm

**Material/Finish:**  
High-alloy steel, epoxy coated

**Temperature:**  
Operating range  
0 °F to 150 °F (-18 °C to 65 °C)

**Seal Type:**  
Environmentally sealed, IP67

**Safe Overload:**  
150% full scale

**Rated Excitation:**  
5 to 10 V AC/DC (20 V maximum)

**Combined Error:**  
±0.03% full scale

**Repeatability:**  
0.02% full scale

**Insulation Resistance:**  
5,000 megohm

**Deflection at Capacity:**  
20,000 lb: 0.0075 in  
50,000 lb: 0.0100 in

**Cable Length:**  
35 ft

**Cable Color Code:**  
Green +Excitation  
Black -Excitation  
White +Signal  
Red -Signal  
Yellow Shield

**Warranty:**  
Three-year limited

**Approvals:**  
FM



Picture is a representation of actual product.

### Approvals

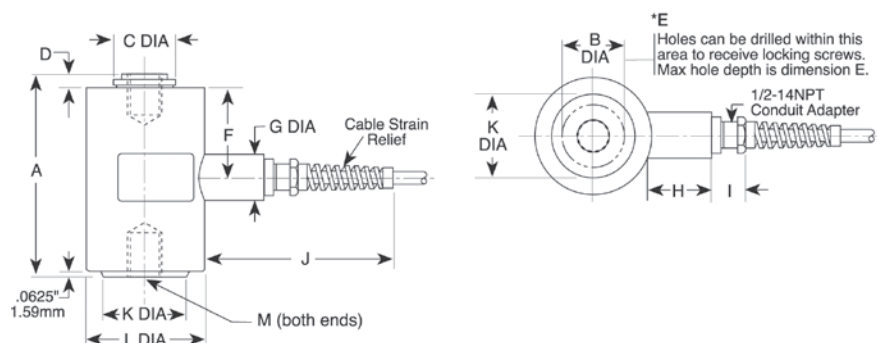


### Order Information

Load Rating	Part #	Est. Weight	Price
500 lb	17654	10 lb	\$3,595.00
1,000 lb	17655	10 lb	\$3,595.00
2,000 lb	17656	10 lb	\$3,595.00
3,000 lb	17657	10 lb	\$3,595.00
5,000 lb	17658	15 lb	\$3,695.00
10,000 lb	17659	15 lb	\$3,695.00

### Dimensions

Rated Capacity	A	B	C	D	E	F	G	H	I	J	K	L	M
lb/in													
500 to 3,000	4.56	—	1.06	0.25	—	2.25	1.38	1.81	1.00	5.81	1.25	3.50	1/2-20 UNF × 0.5 DP
5,000 to 10,000	5.93	1.75	1.87	0.38	0.50	2.66	1.38	1.81	1.00	5.81	2.50	3.50	1-14 UNS × 1.25 DP



### Interchangeable Products

FAIRBANKS®

**3-39897-X, 3-40766-X**

STREETER RICHARDSON®

**20117XX**

METTLER TOLEDO®

**10048X00A, KN75066**

### Specifications

#### Full Scale Output:

3.0 mV/V

#### Output Resistance:

350 ohm (+/- 3.5)

#### Input Resistance:

350 ohm (+/- 3.5)

#### Material/Finish:

High-alloy steel, epoxy coated

#### Temperature:

Operating range  
0 °F to 150 °F (-18 °C to 65 °C)

#### Seal Type:

Environmentally sealed, IP67

#### Safe Overload:

150% full scale

#### Rated Excitation:

5 to 10 V AC/DC (20 V maximum)

#### Nonlinearity:

0.05% full scale

#### Hysteresis:

500 lb: 0.05% full scale  
1,000 to 10,000 lb: 0.02% full scale

#### Insulation Resistance:

5,000 megohm

#### Deflection at Capacity:

500 lb: 0.007 in  
1,000 lb: 0.006 in  
2,000 lb: 0.005 in  
3,000 lb: 0.005 in  
5,000 lb: 0.007 in  
10,000 lb: 0.005 in

#### Cable Length:

35 ft

#### Cable Color Code:

Green +Excitation  
Black -Excitation  
White +Signal  
Red -Signal  
Yellow Shield

#### Warranty:

Three-year limited

#### Approvals:

FM

**VP6 BLH**

This image shows a full page of blank graph paper. The grid consists of small, uniform squares formed by thin, light gray lines. There are no margins, text, or other markings on the page.