

SB5

Stainless Steel, Environmentally Sealed, NTEP Certified 1:5,000 Class III Multiple Cell, OIML C3, IP67



Picture is a representation of actual product

Approvals



Order Information

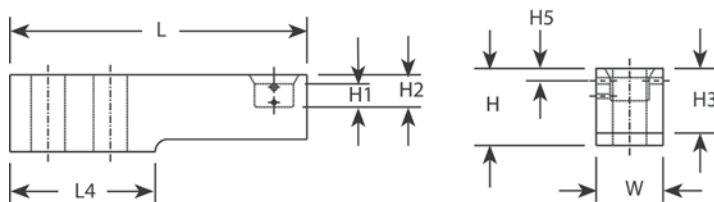
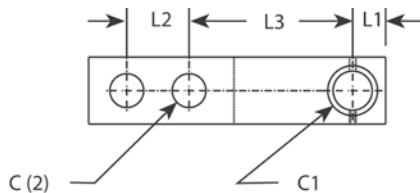
Load Rating	Part #	Est. Weight	Price
NTEP Certified/OIML			
5 kN	33387	3 lb	Consult
10 kN	33388	3 lb	Consult
20 kN	33389	3 lb	Consult
50 kN	33390	7 lb	Consult
Non-NTEP Certified/Non-OIML			
100 kN	33391	16 lb	Consult

30 ft Cables

Load Rating	Part #	Est. Weight	Price
NTEP Certified/OIML			
5 kN	100174	5 lb	Consult
10 kN	100175	5 lb	Consult
20 kN	100176	5 lb	Consult
50 kN	100177	7 lb	Consult
Non-NTEP Certified/Non-OIML			
100 kN	100178	16 lb	Consult

Dimensions

Rated Capacity	C	C1	H	H1	H2	H3	H5	L	L1	L2	L3	L4	W
kN/in													
5 to 20	0.53	0.71	1.42	0.39	0.59	1.19	0.16	6.10	0.59	1.38	3.15	2.98	1.18
50	0.85	0.98	1.93	0.58	0.81	1.62	0.31	7.48	0.83	1.57	4.13	3.66	1.69
100	1.06	1.18	2.87	0.82	1.21	2.43	—	9.65	1.19	1.97	5.31	4.72	2.36



Weigh Module Available

RICE LAKE WEIGHING SYSTEMS
Paramounts® EP..... page 49

Specifications

- Full Scale Output:**
2.0 mV/V
mV/V/ohm calibration
- Output Resistance:**
1,000 (± 2) ohm
- Input Resistance:**
1,100 (± 50) ohm
- Material/Finish:**
Stainless steel
- Temperature:**
Compensated range
14 °F to 104 °F (-10 °C to 40 °C)
Operating range
0 °F to 150 °F (-18 °C to 65 °C)
- Seal Type:**
Environmentally sealed, IP67
- Safe Overload:**
200% full scale
- Safe Sideload:**
100% full scale
- Rated Excitation:**
5 to 10 VDC (15 V maximum)
- Combined Error:**
± 0.03% full scale
- Insulation Resistance:**
10,000 megohm
- Deflection at Capacity:**
5 kN: 0.008 in
10 kN: 0.012 in
20 kN: 0.02 in
50 kN: 0.012 in
- Cable Length:**
5 to 20 kN: 10 ft
50 to 100 kN: 15 ft
Also available in 30 ft
- Cable Diameter:**
0.196 in
Polyurethane jacket
- Cable Color Code:**
Green +Excitation
Black -Excitation
White +Signal
Red -Signal
Yellow Shield
- Warranty:**
One-year limited
- Approvals:**
FM
NTEP
OIML