

COMPRESSION CANISTERS

Page 180

C2P1, ALLOY STEEL



Single-column design with low deflection and trouble-free operation. High alloy steel and epoxy coated for use in harsh environments. Compact and rugged. NTEP Certified capacities range from 20,000 lb to 200,000 lb; non-NTEP Certified capacity of 300,000 lb. Complete with 10 ft or 35 ft of load cell cable.



Page 181

C3P1, ALLOY STEEL



Environmentally protected, single-column design provides low deflection and trouble-free operation. Compact and rugged high-alloy steel. Epoxy coated for corrosion resistance. Capacities range from 500 lb to 10,000 lb. Complete with 35 ft of load cell cable.



TENSION CANISTERS

Page 182

T2P1, ALLOY STEEL



Single-column, environmentally protected design provides low deflection and trouble-free operation. High-alloy steel and epoxy coated construction yields reliable performance in harsh environments. Designed for high-capacity tension applications. Capacities of 20,000 lb and 50,000 lb. Complete with 35 ft of load cell cable.



Page 183

T3P1, ALLOY STEEL



Features low deflection and trouble-free operation. Single-column, environmentally protected design with high-alloy steel and epoxy-coated construction for optimal performance in harsh environments. Designed for high-capacity tension operations. Capacities of 500 lb and 10,000 lb. Complete with 35 ft of load cell cable.





Picture is a representation of actual product.

Approvals

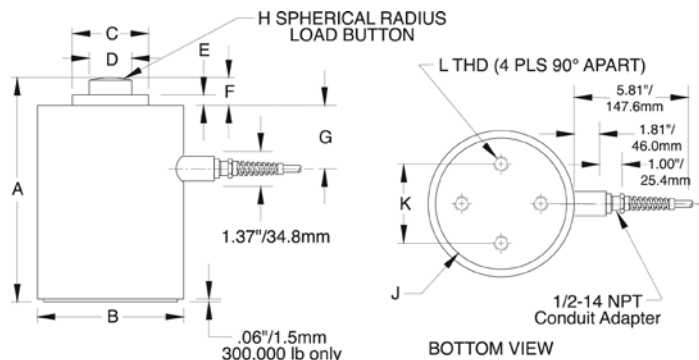


Order Information

Load Rating	Part #	Est. Weight	Price
NTEP Certified, 10 ft Cables			
20,000 lb	21625	25 lb	\$3,595.00
50,000 lb	21626	25 lb	\$3,495.00
100,000 lb	21627	50 lb	\$3,695.00
200,000 lb	21628	110 lb	\$3,995.00
NTEP Certified, 35 ft Cables			
20,000 lb	21630	25 lb	\$3,695.00
50,000 lb	21632	25 lb	\$3,595.00
100,000 lb	21633	50 lb	\$3,795.00
200,000 lb	21634	110 lb	\$4,195.00
Non-NTEP Certified, 10 ft Cables			
300,000 lb	17670	180 lb	\$8,095.00
Non-NTEP Certified, 35 ft Cables			
300,000 lb	17671	190 lb	\$8,195.00

Dimensions

Rated Capacity	A	B	C	D	E	F	G	H	J	K	L
lb/in											
20,000 to 50,000	7.50	4.50	2.25	1.25	0.50	0.75	2.50	6.00	—	2.38	3/8-24 UNF × 3/8 DP
100,000	9.13	6.00	3.13	1.75	0.63	1.06	2.50	12.00	—	4.00	1/2-20 UNF × 3/4 DP
200,000	11.63	8.00	4.50	2.50	0.63	1.06	3.50	12.00	—	5.50	5/8-18 UNF × 1 DP
300,000	14.00	10.00	5.00	3.00	0.75	1.31	4.31	15.00	8.00	5.50	3/4-16 UNF × 1 1/4 DP



Interchangeable Products

FAIRBANKS®

3-38065-X, 3-38066-X

STREETER RICHARDSON®

2011611, 2011612

STREETER RICHARDSON

**2011613, 2011614,
2011617**

METTLER TOLEDO®

10049200A, 10014900A

METTLER TOLEDO

10011900A, 10049300A

Specifications

Full Scale Output:

2.0 mV/V

Output Resistance:

350 (± 3.5) ohm

Input Resistance:

350 (± 3.5) ohm

Material/Finish:

High-alloy steel, epoxy coated

Temperature:

Compensated:

14 °F to 104 °F (-10 °C to 40 °C)

Operating:

0 °F to 150 °F (-18 °C to 65 °C)

Seal Type:

NEMA Type 6 Environmentally sealed, IP67

Safe Overload:

150% full scale

Rated Excitation:

5 to 20 VDC

Nonlinearity:

0.03% full scale

Hysteresis:

0.02% full scale

Insulation Resistance:

5,000 megohm

Deflection at Capacity:

20,000 lb: 0.0075 in

30,000 lb: 0.0075 in

50,000 lb: 0.0065 in

100,000 lb: 0.0075 in

200,000 lb: 0.0070 in

300,000 lb: 0.012 in

Cable Length:

10 ft

35 ft

Cable Color Code:

Green +Excitation

Black -Excitation

White +Signal

Red -Signal

Yellow Shield

Warranty:

Three-year limited

Approvals:

NTEP

FM



Picture is a representation of actual product.

Approvals



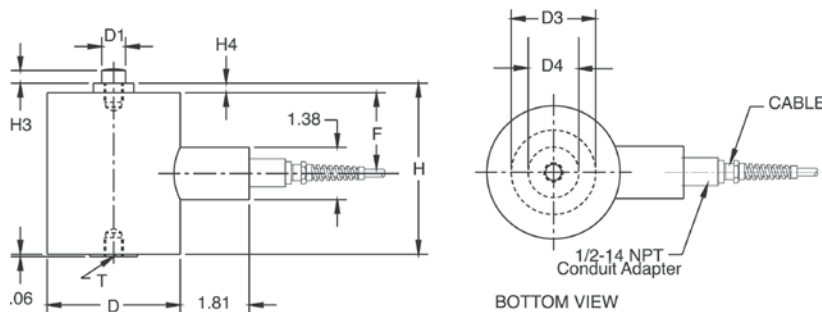
Order Information

Load Rating	Part #	Est. Weight	Price
500 lb	17672	10 lb	\$3,595.00
1,000 lb	17673	10 lb	\$3,595.00
2,000 lb	17674	10 lb	\$3,595.00
3,000 lb	17675	10 lb	\$3,595.00
5,000 lb	17676	15 lb	\$3,695.00
10,000 lb	17677	15 lb	\$3,695.00

Dimensions

Rated Capacity	D	D1	D3	D4	F	H	H3	H4	L	T
lb/in										
500 to 3,000	3.50	0.62	1.25	—	2.25	4.56	0.38	0.25	—	1/2-20 UNF × 0.50 DP
5,000 to 10,000	3.50	1.06	2.50	1.75	2.66	5.94	0.62	0.38	0.50	1-14 UNS × 1.25 DP

HOLES CAN BE DRILLED WITHIN THIS AREA TO RECEIVE LOCKING SCREWS. MAX. DEPTH OF HOLES IS "L" DIM.



Interchangeable Products

FAIRBANKS®

3-38054-X

METTLER TOLEDO®

1004400A, KN713700

METTLER TOLEDO

KB200570, 10049100A

Specifications

Full Scale Output:

3.0 mV/V

Output Resistance:

350 (± 3.5) ohm

Input Resistance:

350 (± 3.5) ohm

Material/Finish:

High-alloy steel, epoxy coated

Temperature:

Operating:

0 °F to 150 °F (-18 °C to 65 °C)

Seal Type:

NEMA Type 6 Environmentally sealed, IP67

Safe Overload:

150% full scale

Rated Excitation:

5 to 20 VDC

Nonlinearity:

0.05% full scale

Hysteresis:

500 lb: 0.05% full scale

1,000 to 10,000 lb: 0.02% full scale

Insulation Resistance:

5,000 megohm

Deflection at Capacity:

500 lb: 0.007 in

1,000 lb: 0.006 in

2,000 lb: 0.005 in

3,000 lb: 0.005 in

5,000 lb: 0.007 in

10,000 lb: 0.005 in

Cable Length:

35 ft

Cable Color Code:

Green +Excitation

Black -Excitation

White +Signal

Red -Signal

Yellow Shield

Warranty:

Three-year limited

Approvals:

FM



Picture is a representation of actual product.

Approvals

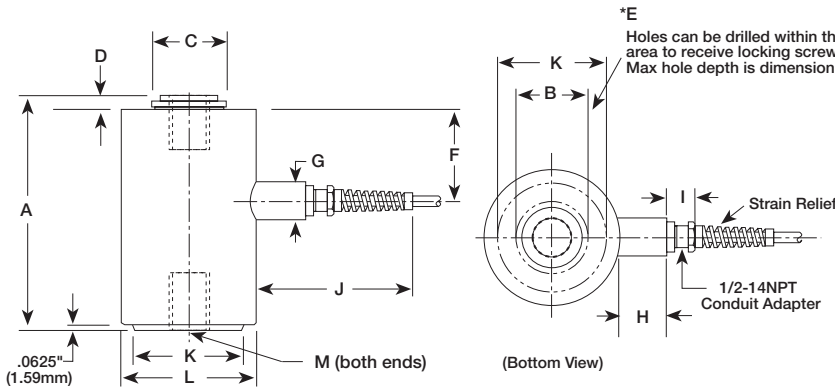


Order Information

Load Rating	Part #	Est. Weight	Price
20,000 lb	17660	30 lb	\$3,695.00
50,000 lb	17661	65 lb	\$3,895.00

Dimensions

Rated Capacity lb/in	A	B	C	D	E	F	G	H	I	J	K	L	M
20,000	8.50	2.63	2.75	0.50	1.00	3.38	1.38	1.81	1.00	5.81	4.00	5.00	1 1/2-12 UNF × 2 DP
50,000	11.44	3.75	4.00	0.63	1.00	5.00	1.38	1.81	1.00	5.81	5.75	6.50	2-12 UNF × 2.63 DP



Interchangeable Products

FAIRBANKS®

657090, 657091

STREETER RICHARDSON®

2011711, 2011712

Specifications

Full Scale Output:

2.0 mV/V

Output Resistance:

350 (± 3.5) ohm

Input Resistance:

350 (± 3.5) ohm

Material/Finish:

High-alloy steel, epoxy coated

Temperature:

Operating:
0 °F to 150 °F (-18 °C to 65 °C)

Seal Type:

Environmentally sealed, IP67

Safe Overload:

150% full scale

Rated Excitation:

5 to 20 VDC

Combined Error:

± 0.03% full scale

Repeatability:

0.02% full scale

Insulation Resistance:

5,000 megohm

Deflection at Capacity:

20,000 lb: 0.0075 in
50,000 lb: 0.0100 in

Cable Length:

35 ft

Cable Color Code:

Green +Excitation
Black -Excitation
White +Signal
Red -Signal
Yellow Shield

Warranty:

Three-year limited

Approvals:

FM



Picture is a representation of actual product.

Approvals

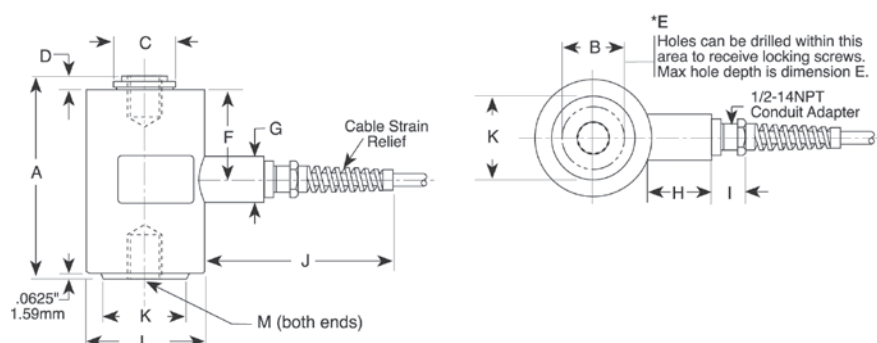


Order Information

Load Rating	Part #	Est. Weight	Price
500 lb	17654	10 lb	\$3,595.00
1,000 lb	17655	10 lb	\$3,595.00
2,000 lb	17656	10 lb	\$3,595.00
3,000 lb	17657	10 lb	\$3,595.00
5,000 lb	17658	15 lb	\$3,695.00
10,000 lb	17659	15 lb	\$3,695.00

Dimensions

Rated Capacity	A	B	C	D	E	F	G	H	I	J	K	L	M
lb/in													
500 to 3,000	4.56	—	1.06	0.25	—	2.25	1.38	1.81	1.00	5.81	1.25	3.50	1/2-20 UNF × 0.5 DP
5,000 to 10,000	5.93	1.75	1.87	0.38	0.50	2.66	1.38	1.81	1.00	5.81	2.50	3.50	1-14 UNS × 1.25 DP



Interchangeable Products

FAIRBANKS®

3-39897-X, 3-40766-X

STREETER RICHARDSON®

20117XX

METTLER TOLEDO®

10048X00A, KN75066

Specifications

Full Scale Output:

3.0 mV/V

Output Resistance:

350 ohm (± 3.5)

Input Resistance:

350 ohm (± 3.5)

Material/Finish:

High-alloy steel, epoxy coated

Temperature:

Operating:
0 °F to 150 °F (-18 °C to 65 °C)

Seal Type:

Environmentally sealed, IP67

Safe Overload:

150% full scale

Rated Excitation:

5 to 20 VDC

Nonlinearity:

0.05% full scale

Hysteresis:

500 lb: 0.05% full scale
1,000 to 10,000 lb: 0.02% full scale

Insulation Resistance:

5,000 megohm

Deflection at Capacity:

500 lb: 0.007 in
1,000 lb: 0.006 in
2,000 lb: 0.005 in
3,000 lb: 0.005 in
5,000 lb: 0.007 in
10,000 lb: 0.005 in

Cable Length:

35 ft

Cable Color Code:

Green +Excitation
Black -Excitation
White +Signal
Red -Signal
Yellow Shield

Warranty:

Three-year limited

Approvals:

FM

VP6® BLH®