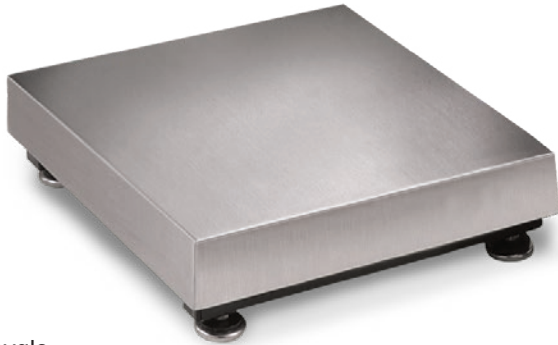


BenchMark® MS

Mild Steel Bench Scale

BENCH SCALES



Standard Features

- NTEP Certified load cell
- Painted mild steel frame with 304 stainless steel cover
- Base design isolates load cell from overloads and shock loads for added durability
- Specially designed adjustable support feet provide exceptional traction and will not scratch surfaces

Specifications

Load Cell:

IP66, environmentally sealed
Aluminum

Output Impedance:

350 ohm

Maximum Overload:

150% to 200% depending on capacity

Overload Protection:

Five-point, independently adjusted

Scale Frame:

Mild steel powder coated black

Scale Cover:

AISI304L, straight line finish, Ra=45 ± 10

Cable Length:

10 ft (3 m)

Temperature:

Compensated:
14 °F to 104 °F (-10 °C to 40 °C)

Warranty:

Two-year limited

Approvals:

NTEP 95-072, Class III, 5,000 d
Measurement Canada AM-5082
Load cell is NTEP
Load cell is FM/cFmus approved

Approvals



Measurement
Canada
Approved



† Load cell
approval



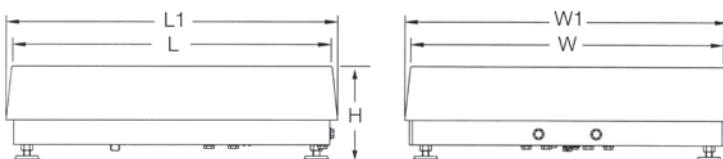
†† Load cell
approval

Part Number/Price

Part #	Capacity	Platform Dimensions (L x W x H)	Est. Weight	Price
18580 †	30 lb (15 kg)	12 x 12 x 4.12 in	20 lb	Consult
18582 †	50 lb (25 kg)	12 x 12 x 4.12 in	20 lb	Consult
18584 †	100 lb (50 kg)	12 x 12 x 4.12 in	20 lb	Consult
18586 ††	50 lb (25 kg)	12 x 18 x 4.12 in	37 lb	Consult
18588 ††	100 lb (50 kg)	12 x 18 x 4.12 in	37 lb	Consult
18590 †	50 lb (25 kg)	18 x 18 x 5.25 in	68 lb	Consult
18592 †	100 lb (50 kg)	18 x 18 x 5.25 in	68 lb	Consult
18594 †	150 lb (75 kg)	18 x 18 x 5.25 in	68 lb	Consult
18596 †	200 lb (100 kg)	18 x 18 x 5.25 in	68 lb	Consult
18598 †	250 lb (125 kg)	18 x 18 x 5.25 in	68 lb	Consult
18600 †	300 lb (150 kg)	18 x 18 x 5.25 in	68 lb	Consult
18602 †	500 lb (250 kg)	18 x 18 x 5.25 in	68 lb	Consult
18604 ††	1,000 lb (500 kg)	18 x 18 x 5.25 in	68 lb	Consult
18606 †	50 lb (25 kg)	24 x 18 x 5.25 in	78 lb	Consult
18608 †	100 lb (50 kg)	24 x 18 x 5.25 in	78 lb	Consult
18610 †	150 lb (75 kg)	24 x 18 x 5.25 in	78 lb	Consult
18612 †	200 lb (100 kg)	24 x 18 x 5.25 in	78 lb	Consult
18614 †	250 lb (125 kg)	24 x 18 x 5.25 in	78 lb	Consult
18616 †	300 lb (150 kg)	24 x 18 x 5.25 in	78 lb	Consult
18618 †	500 lb (250 kg)	24 x 18 x 5.25 in	78 lb	Consult
18620 ††	1,000 lb (500 kg)	24 x 18 x 5.25 in	78 lb	Consult
18622 †	100 lb (50 kg)	24 x 24 x 5.25 in	78 lb	Consult
18624 †	150 lb (75 kg)	24 x 24 x 5.25 in	84 lb	Consult
18626 †	200 lb (100 kg)	24 x 24 x 5.25 in	84 lb	Consult
18628 †	250 lb (125 kg)	24 x 24 x 5.25 in	84 lb	Consult
18630 †	300 lb (150 kg)	24 x 24 x 5.25 in	84 lb	Consult
18632 †	500 lb (250 kg)	24 x 24 x 5.25 in	84 lb	Consult
18634 ††	1,000 lb (500 kg)	24 x 24 x 5.25 in	84 lb	Consult

Options/Accessories

Part #	Description	Catalog Page #
Consult	Scale columns	See page 195
Consult	Ball transfer and roller conveyor scale tops	See page 194
Consult	Mobile scale carts	See page 190 to page 193



Dimensions

BenchMark MS			
12 x 12 in			
H	4.12 in	W	12.00 in
L	12.00 in	W1	12.50 in
L1	12.50 in		
12 x 18 in			
H	4.12 in	W	18.00 in
L	12.00 in	W1	18.50 in
L1	12.50 in		
18 x 18 in			
H	5.25 in	W	18.00 in
L	18.00 in	W1	18.75 in
L1	18.75 in		
24 x 18 in			
H	5.25 in	W	18.00 in
L	24.00 in	W1	18.75 in
L1	24.75 in		
24 x 24 in			
H	5.25 in	W	24.00 in
L	24.00 in	W1	24.75 in
L1	24.75 in		

Note: 1 in = 25.4 mm