

Belt Scale Integrator System

1280 HMI BELT SCALE SYSTEM
WITH SCT-4XD INTEGRATOR



RICE LAKE[®]
WEIGHING SYSTEMS

800-472-6703

www.ricelake.com

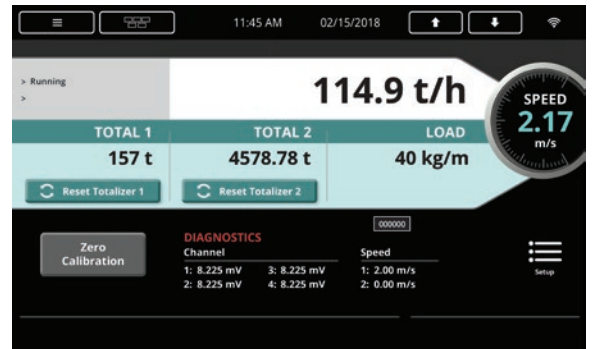
Belt Scale Integrator System

1280 HMI BELT SCALE SYSTEM WITH SCT-4XD INTEGRATOR

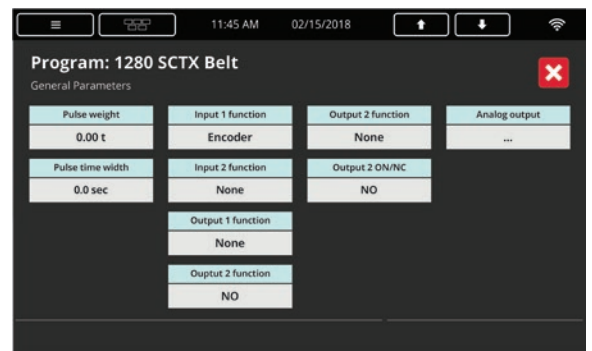
Real-time Scale Data and Diagnostics

Rice Lake Weighing Systems' 1280 Enterprise™ Series indicator revolutionizes weighing operations with the ultimate combination of power and programmability. Increase efficiency with the 1280's highly customizable graphical user interface, built-in web server, systems integration and data tracking.

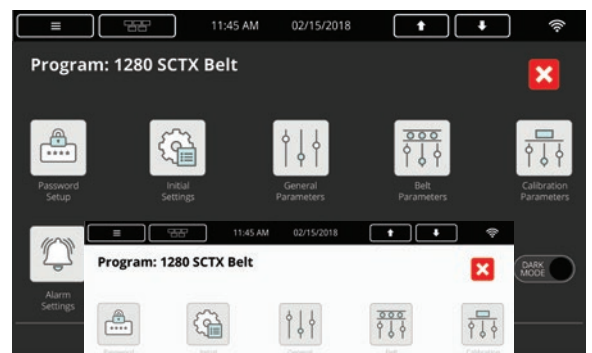
Compatible with the 1280, the SCT-4XD is a high-speed integrator, capable of reading two speed encoders and managing two totalizers. Manage up to four load cells of a belt scale with complete diagnostics, calibration and remote configuration.



Run Screen



Parameters Setup Screen



Launch Screen

Screens can be set to light or dark mode.

SPECIFICATIONS:

- 1280 terminal with web server and system configuration menus
- Manage up to four load cells (one scale)
- Dual encoders and outputs for automatic test weight application
- Micro-USB communication port for configuration, diagnostics and data backup (RL Tools Software)
- All data and adjustments of each scale are available through integrated fieldbus (not available on AN models)
- Removable terminal blocks to simplify wiring in the electrical panel
- Power supply circuit with protections, specific for industrial environment

OPTIONS

- Fieldbus: EtherNet/IP, PROFINET, Modbus TCP/IP
- Analog output

