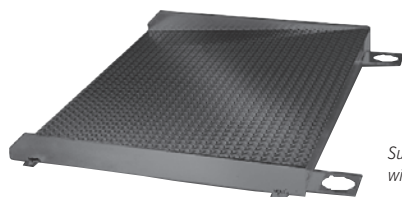
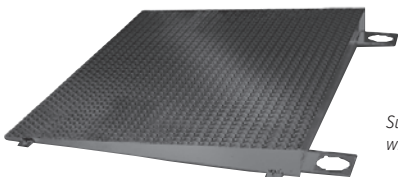


Summit® 3000 Access Ramps



Summit Access Ramps
with Side Rails



Summit Access Ramps
without Side Rails

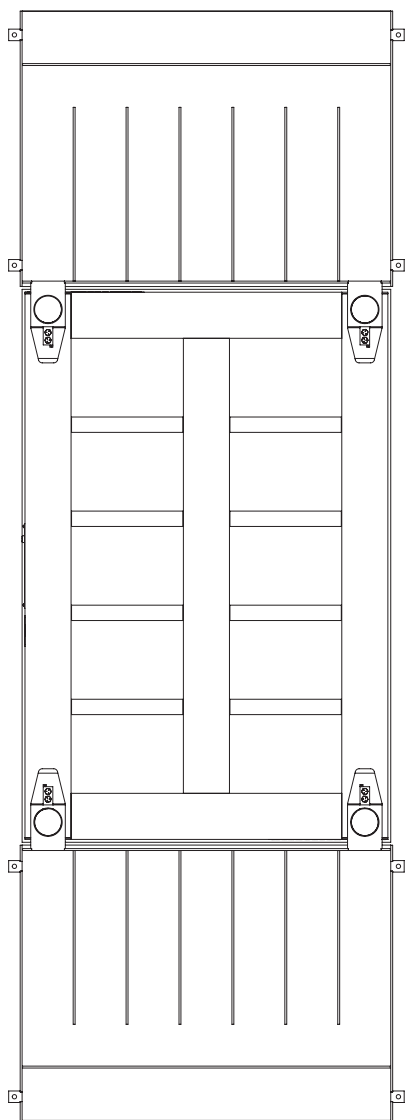
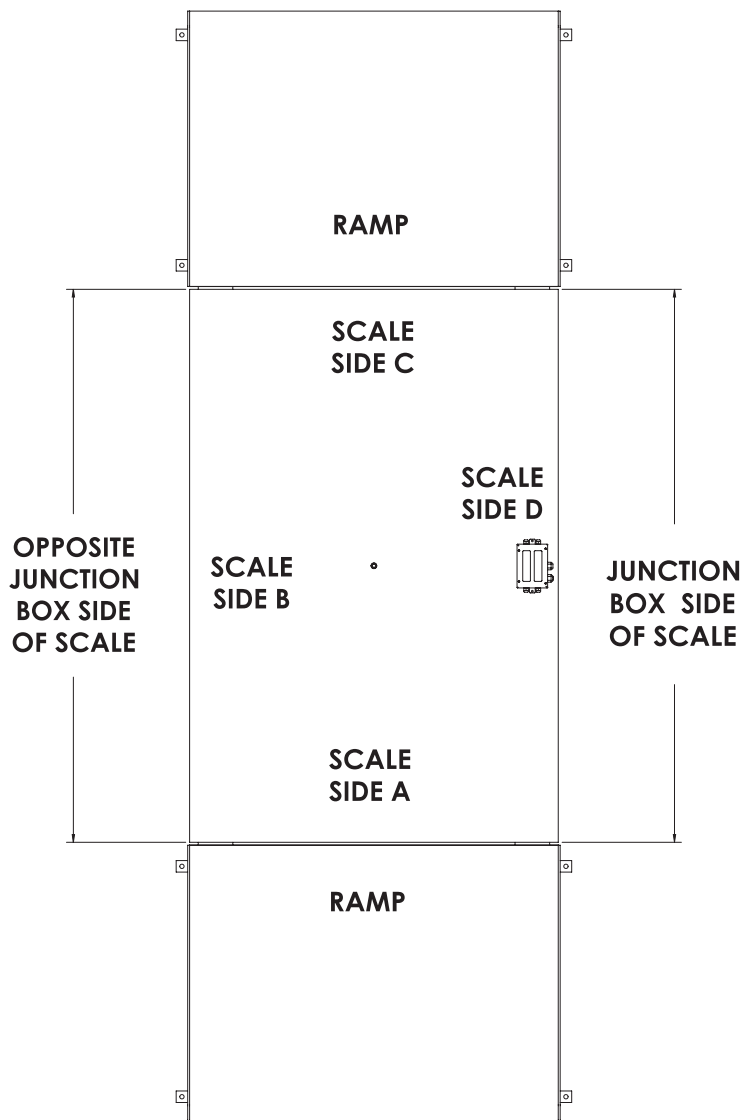
Part Number/Price

Part # with Side Rails	Part # without Side Rails	Size (W × L × H) (Diamond Treadplate Standard)	Ramp Angle of Incline	Est. Weight	Price
74953*	224124	3 ft × 3 ft × 3.625 in	6°	133 lb	Consult
74954*	224125	4 ft × 3 ft × 3.625 in	6°	177 lb	Consult
74955*	224126	5 ft × 3 ft × 3.625 in	6°	226 lb	Consult
74956	224127	3 ft × 4 ft × 3.625 in	4°	177 lb	Consult
74957	224129	4 ft × 4 ft × 3.625 in	4°	224 lb	Consult
74958	224130	5 ft × 4 ft × 3.625 in	4°	272 lb	Consult

* Not recommended for use with pallet jacks

NOTE: Part numbered ramps are designed to fit scale on sides perpendicular to junction box. The junction box is always on longest side of scale unless specified differently.

Part numbered ramps are designed to fit scale sides A or C; if you need a ramp to fit scale side B or D, please request a quote for a special ramp



Underdeck View

FLOOR SCALES